



IADC ASP PROGRAM

2007



Summary of Occupational Incidents (Central/South America Water Totals)



Table of Contents

(Table of Contents is Hyperlinked, Just click on Topic & go)

IADC 2007 CENTRAL/SOUTH AMERICA WATER TOTALS (TABLE 1).....	3
<i>Central/South America Water Total Incidence Rates vs Man-hours (Figure 1).....</i>	<i>3</i>
IADC 2007 CENTRAL/SOUTH AMERICA WATER CHARTS	4
<i>Central/South America Water Total Lost Time Incidents by Month (Chart 1).....</i>	<i>4</i>
<i>Central/South America Water Total Recordable Incidents by Month (Chart 2).....</i>	<i>4</i>
<i>Central/South America Water Total Lost Time Incidents by Occupation (Chart 3)</i>	<i>5</i>
<i>Central/South America Water Total Recordable Incidents by Occupation (Chart 4).....</i>	<i>5</i>
<i>Central/South America Water Total Lost Time Incidents by Body Part (Chart 5).....</i>	<i>6</i>
<i>Central/South America Water Total Recordable Incidents by Body Part (Chart 6).....</i>	<i>6</i>
<i>Central/South America Water Total Lost Time Incidents by Incident Type (Chart 7).....</i>	<i>7</i>
<i>Central/South America Water Total Recordable Incidents by Incident Type (Chart 8).....</i>	<i>7</i>
<i>Central/South America Water Total Lost Time Incidents by Equipment (Chart 9).....</i>	<i>8</i>
<i>Central/South America Water Total Recordable Incidents by Equipment (Chart 10).....</i>	<i>8</i>
<i>Central/South America Water Total Lost Time Incidents by Operation (Chart 11).....</i>	<i>9</i>
<i>Central/South America Water Total Recordable Incidents by Operation (Chart 12).....</i>	<i>9</i>
<i>Central/South America Water Total Lost Time Incidents by Location (Chart 13).....</i>	<i>10</i>
<i>Central/South America Water Total Recordable Incidents by Location (Chart 14)</i>	<i>10</i>
<i>Central/South America Water Total Lost Time Incidents by Time in Service (Chart 15).....</i>	<i>11</i>
<i>Central/South America Water Total Recordable Incidents by Time in Service (Chart 16).....</i>	<i>11</i>
<i>Central/South America Water Total Lost Time Incidents by Time of Day (Chart 17).....</i>	<i>12</i>
<i>Central/South America Water Total Recordable Incidents by Time of Day (Chart 18).....</i>	<i>12</i>



IADC 2007 Central/South America Water Totals (Table 1)

	<u>Total</u>
Total Man-hours	19,587,249
Total Medical Treatment Incidents	59
Total Restricted Work Incidents	30
Total Lost Time Incidents	40
Total Fatalities	3
Total Recordables	132
MTO Incidence Rate	0.60
RWC Incidence Rate	0.31
LTI Incidence Rate	0.44
LTI Frequency Rate	2.20
DART Incidence Rate	0.75
DART Frequency Rate	3.73
Recordable Incidence Rate	1.35
Recordable Frequency Rate	6.74

Companies Reporting: Water – 16

Medical Treatment Incidence Rate = MTOs X 200,000

Restricted Work Incidence Rate = RWCs X 200,000

Lost Time Incidence Rate = LTIs + FTLs X 200,000

DART Incidence Rate = LTIs + RWC X 200,000

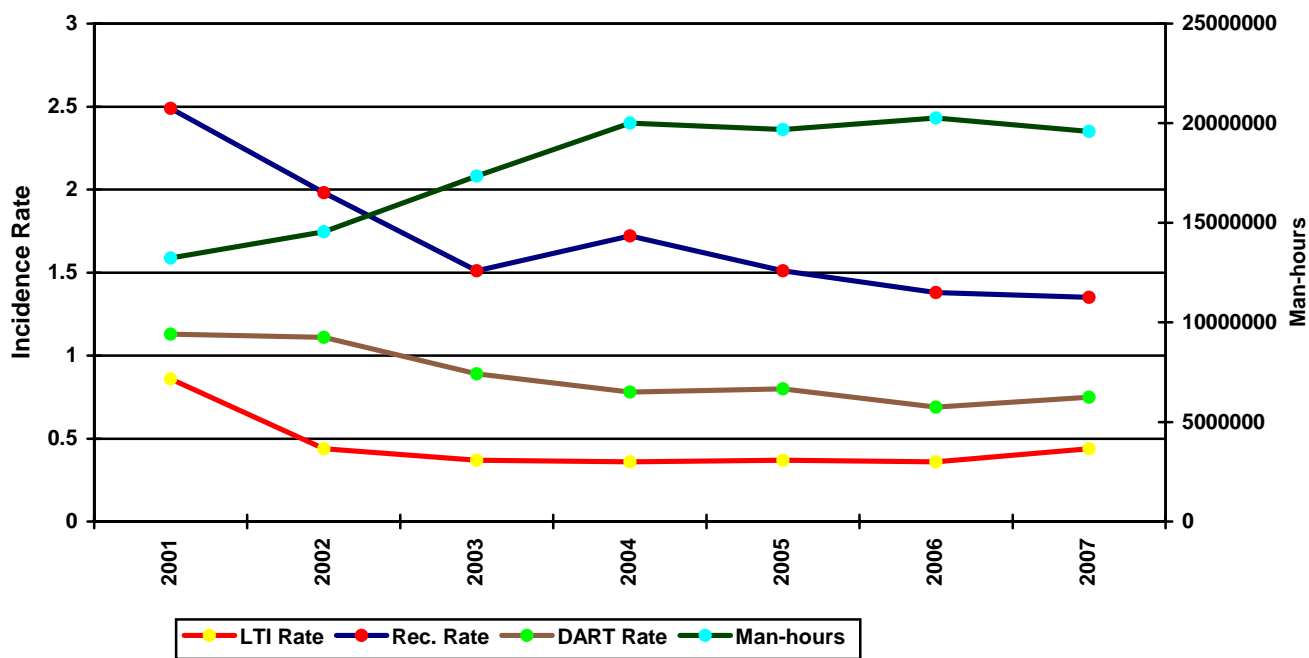
Recordable Incidence Rate = RCRD X 200,000

Lost Time Frequency Rate = LTIs +FTLs X 1,000,000

DART Frequency Rate = LTIs + RWC X 1,000,000

Recordable Frequency Rate = RCRD X 1,000,000

Central/South America Water Total Incidence Rates vs Man-hours (Figure 1)

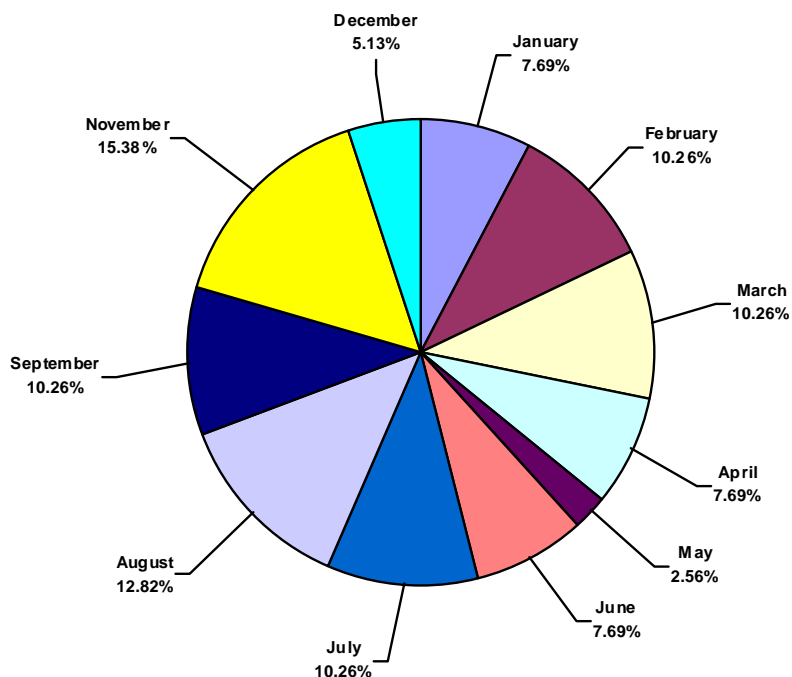




IADC 2007 Central/South America Water Charts

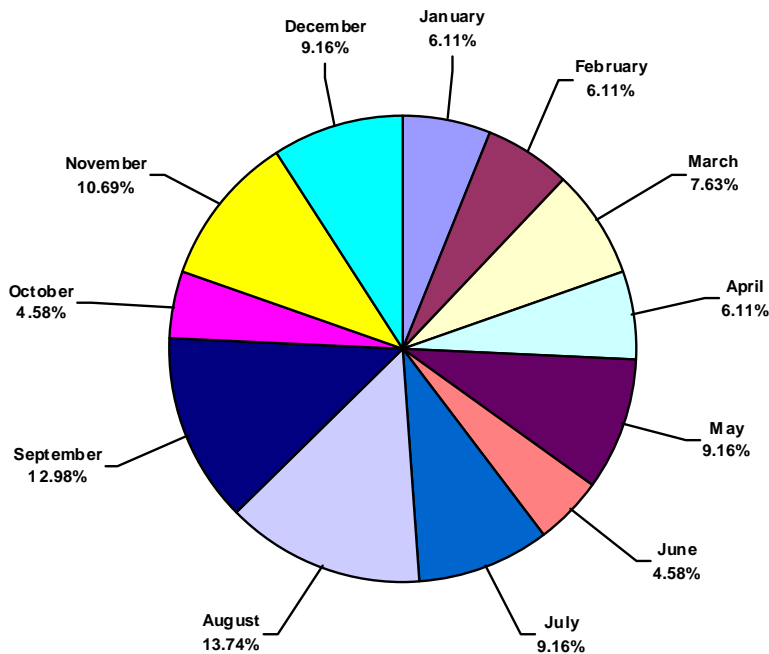
Central/South America Water Total Lost Time Incidents by Month (Chart 1)

Based on 39 Incidents



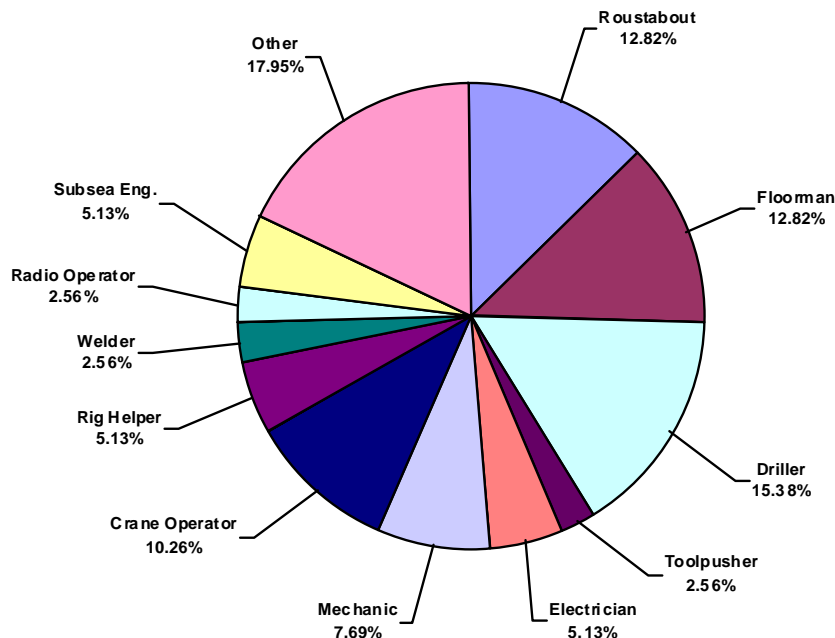
Central/South America Water Total Recordable Incidents by Month (Chart 2)

Based on 131 Incidents

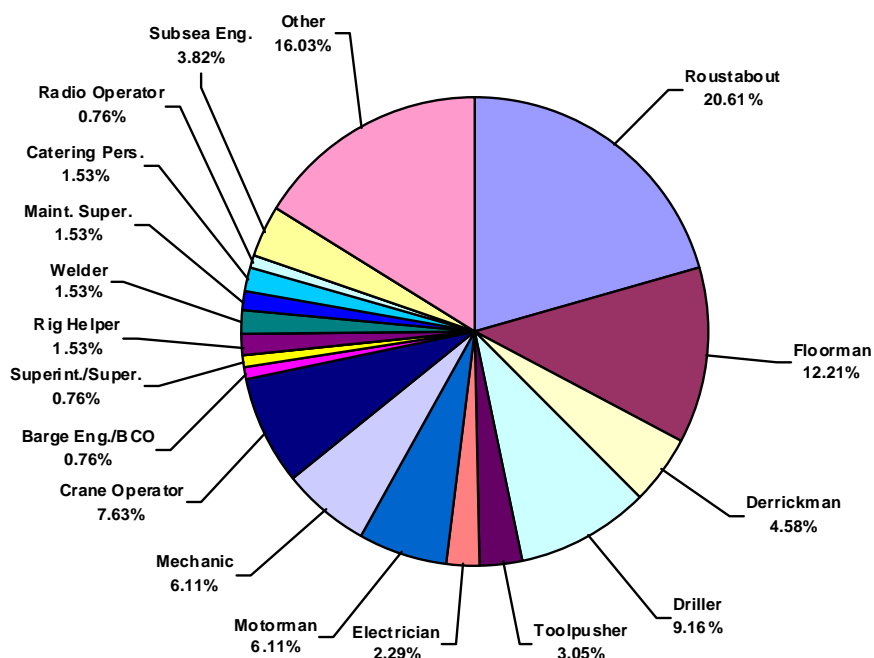




Central/South America Water Total Lost Time Incidents by Occupation (Chart 3)
Based on 39 Incidents

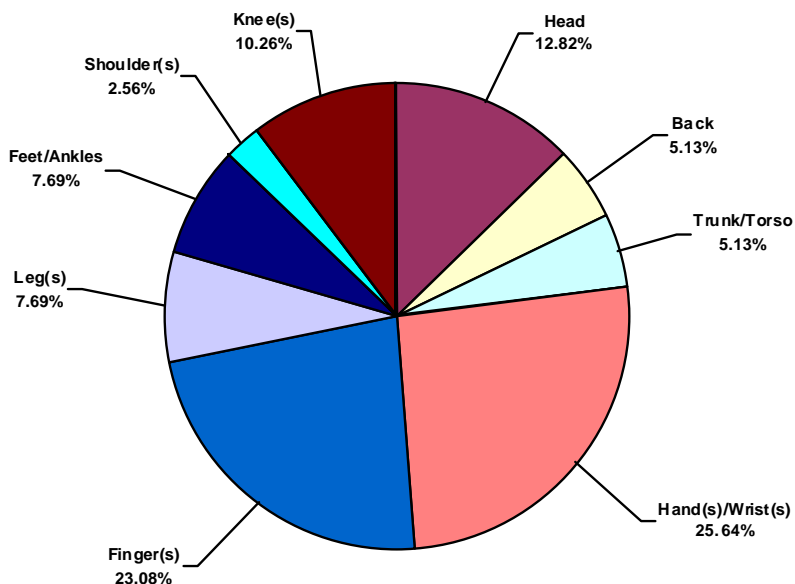


Central/South America Water Total Recordable Incidents by Occupation (Chart 4)
Based on 131 Incidents

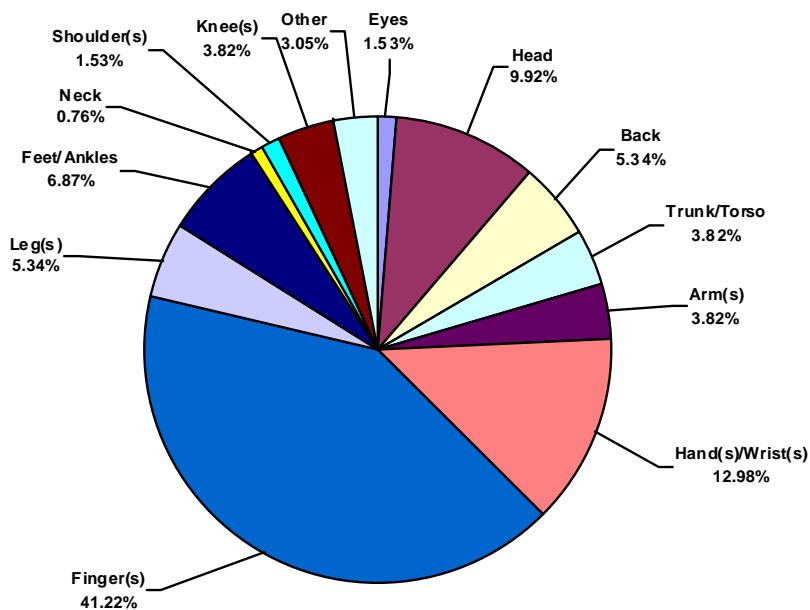




Central/South America Water Total Lost Time Incidents by Body Part (Chart 5)
Based on 39 Incidents

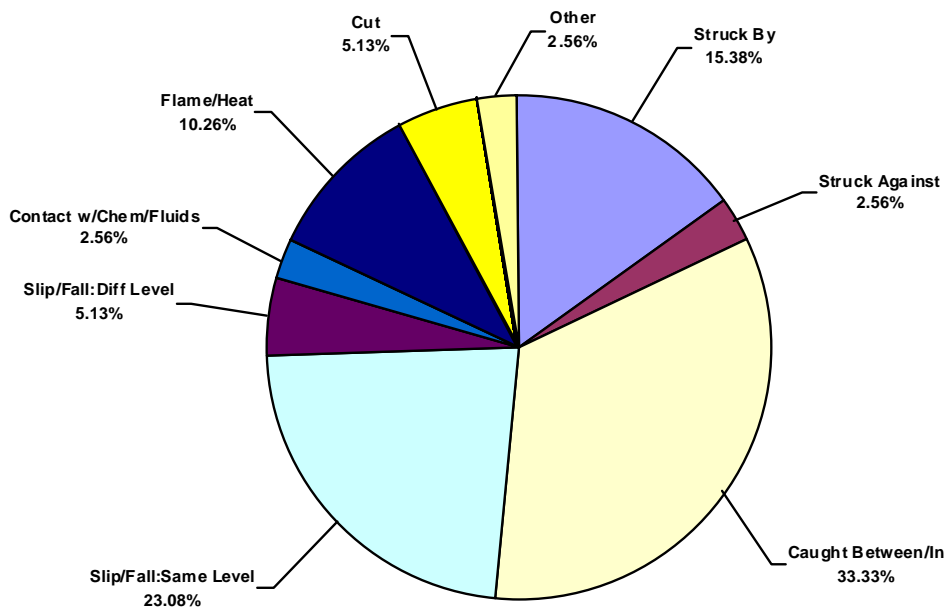


Central/South America Water Total Recordable Incidents by Body Part (Chart 6)
Based on 131 Incidents

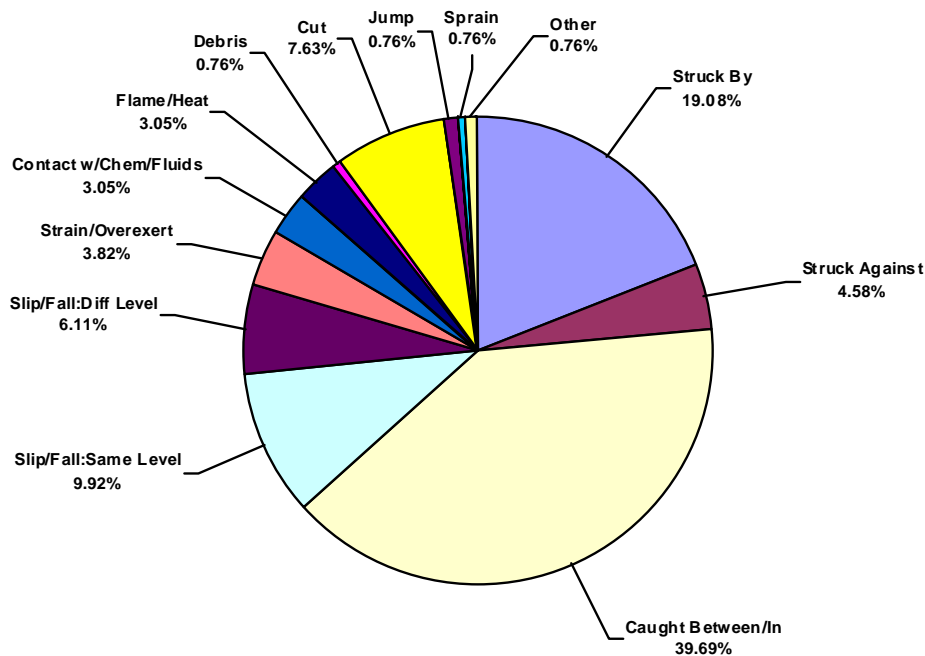




Central/South America Water Total Lost Time Incidents by Incident Type (Chart 7)
Based on 39 Incidents

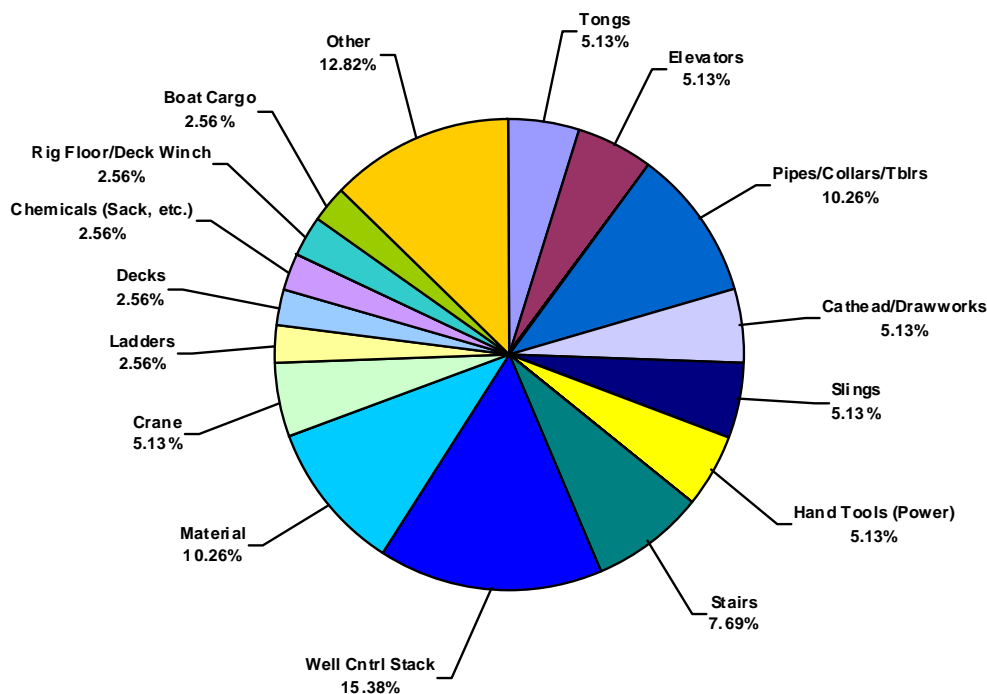


Central/South America Water Total Recordable Incidents by Incident Type (Chart 8)
Based on 131 Incidents

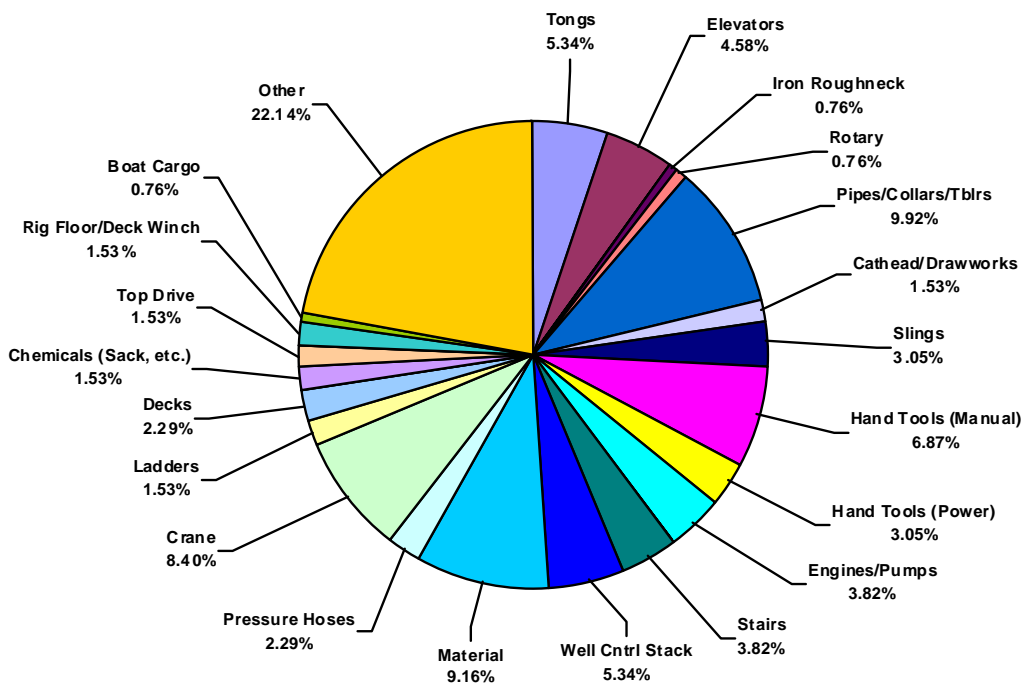




Central/South America Water Total Lost Time Incidents by Equipment (Chart 9)
Based on 39 Incidents

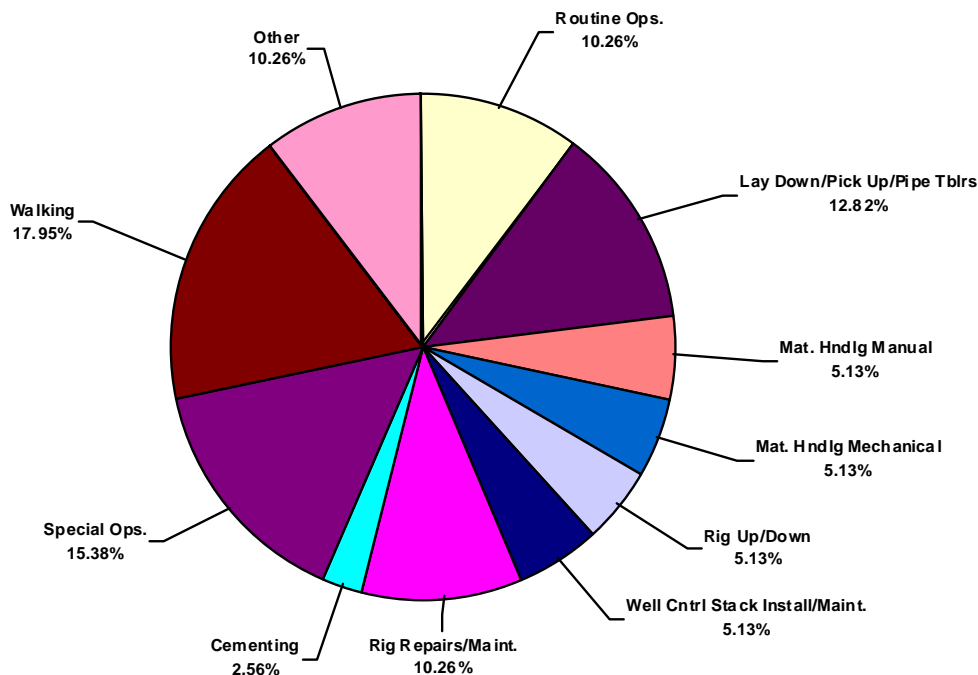


Central/South America Water Total Recordable Incidents by Equipment (Chart 10)
Based on 131 Incidents

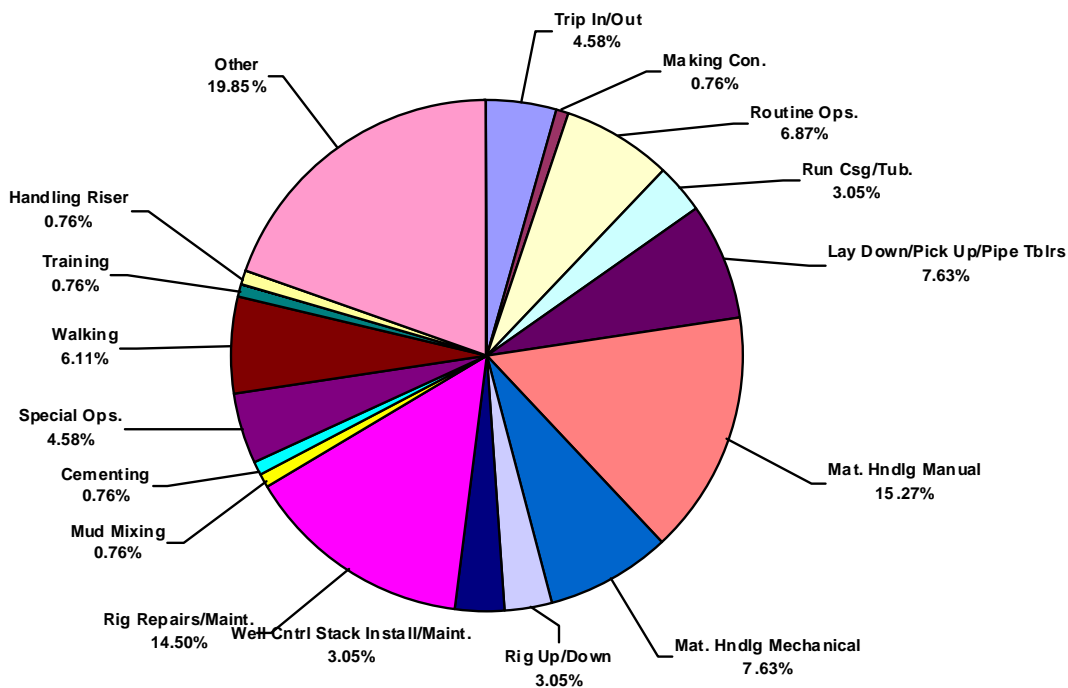




Central/South America Water Total Lost Time Incidents by Operation (Chart 11)
Based on 39 Incidents

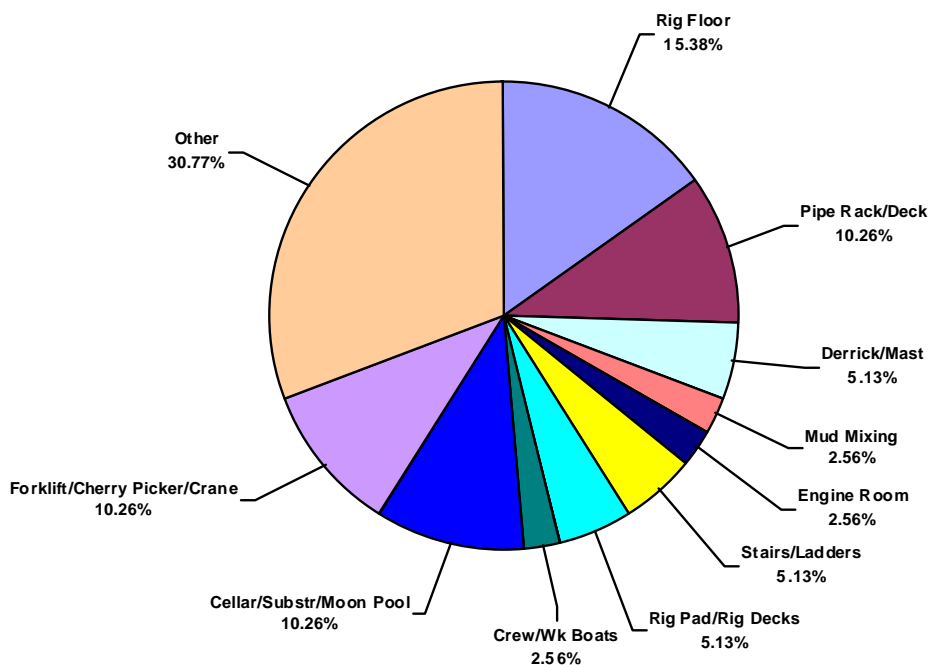


Central/South America Water Total Recordable Incidents by Operation (Chart 12)
Based on 131 Incidents

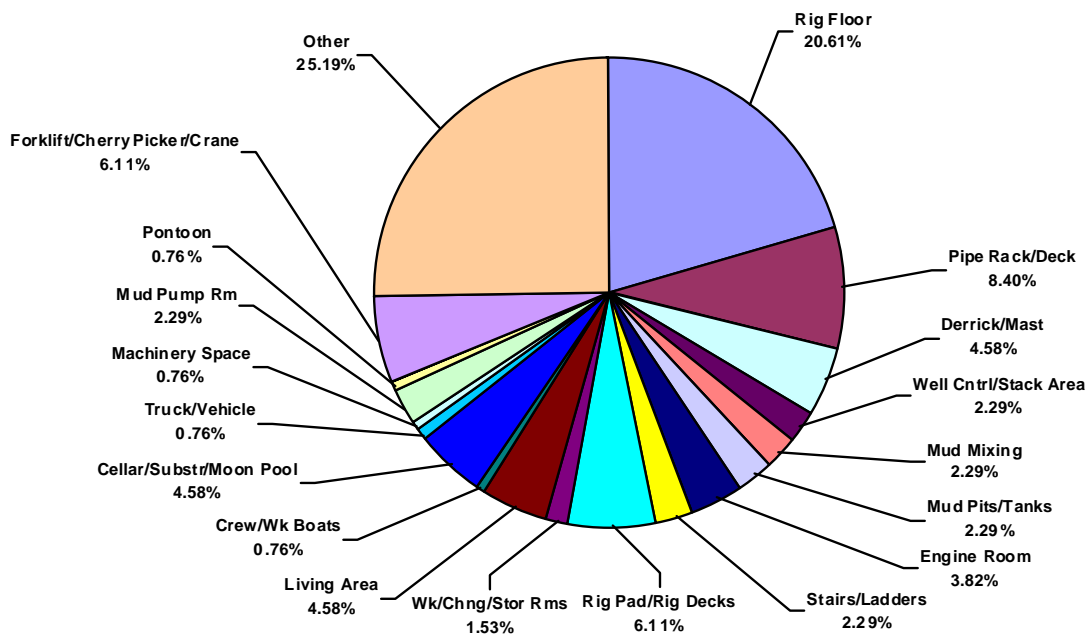




Central/South America Water Total Lost Time Incidents by Location (Chart 13)
Based on 39 Incidents

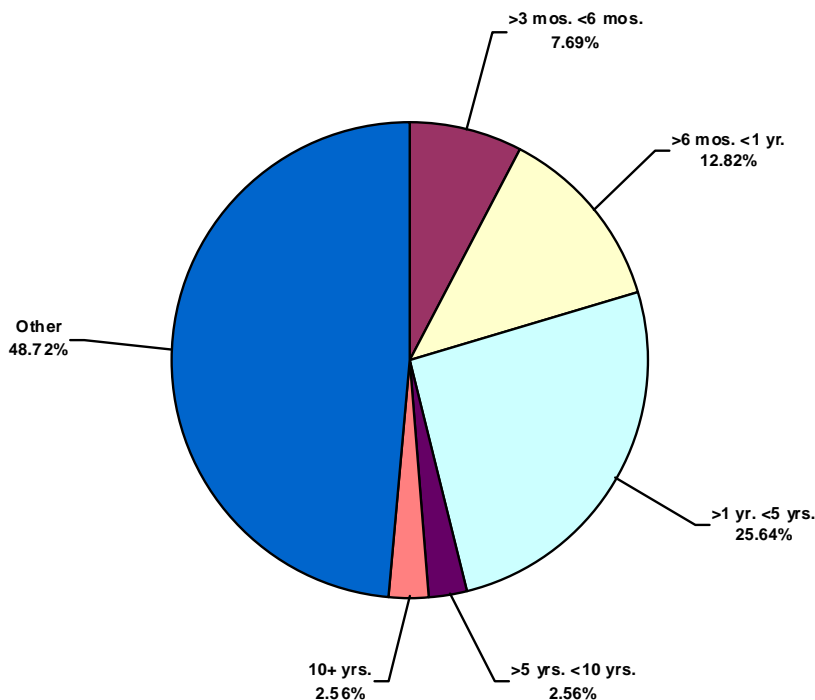


Central/South America Water Total Recordable Incidents by Location (Chart 14)
Based on 131 Incidents

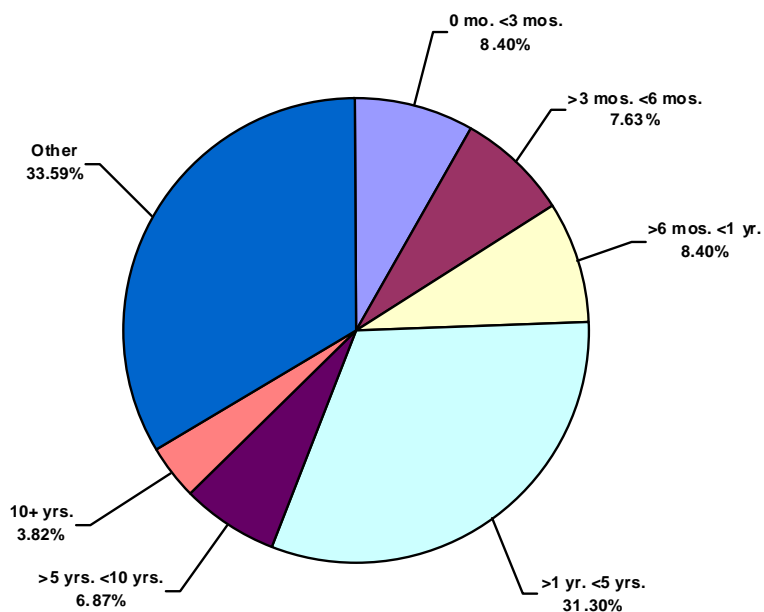




Central/South America Water Total Lost Time Incidents by Time in Service (Chart 15)
Based on 39 Incidents

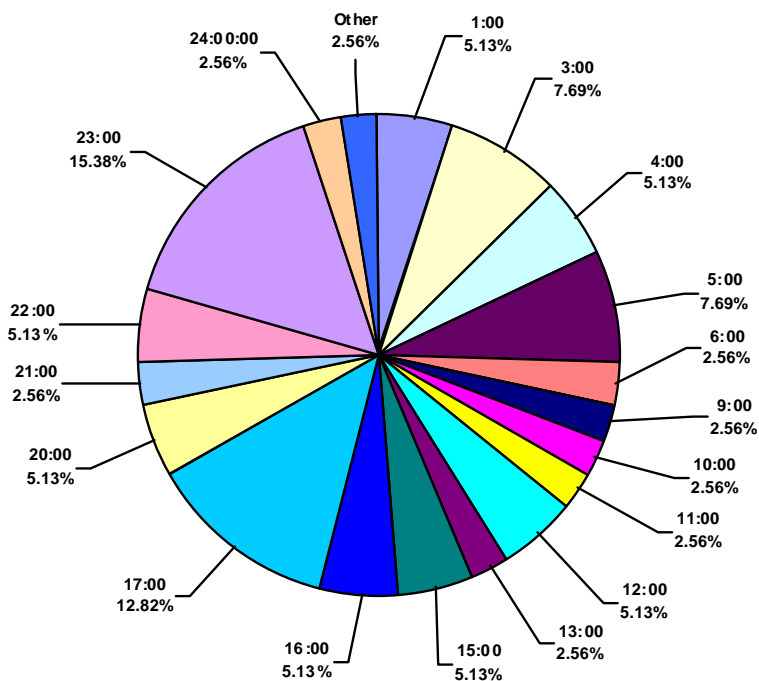


Central/South America Water Total Recordable Incidents by Time in Service (Chart 16)
Based on 131 Incidents





Central/South America Water Total Lost Time Incidents by Time of Day (Chart 17)
Based on 39 Incidents



Central/South America Water Total Recordable Incidents by Time of Day (Chart 18)
Based on 131 Incidents

