



IADC ASP PROGRAM

2006



Summary of Occupational Incidents (Middle East Land Totals)



Table of Contents

(Table of Contents is Hyperlinked, Just click on Topic & go)

IADC 2006 MIDDLE EAST LAND TOTALS (TABLE 1)	3
<i>Middle East Land Total LTI & Recordable Incidence Rates vs Man-hours (Figure 1)</i>	3
IADC 2006 MIDDLE EAST LAND CHARTS	4
<i>Middle East Land Total Lost Time Incidents by Month (Chart 1)</i>	4
<i>Middle East Land Total Recordable Incidents by Month (Chart 2)</i>	4
<i>Middle East Land Total Lost Time Incidents by Occupation (Chart 3)</i>	5
<i>Middle East Land Total Recordable Incidents by Occupation (Chart 4)</i>	5
<i>Middle East Land Total Lost Time Incidents by Body Part (Chart 5)</i>	6
<i>Middle East Land Total Recordable Incidents by Body Part (Chart 6)</i>	6
<i>Middle East Land Total Lost Time Incidents by Incident Type (Chart 7)</i>	7
<i>Middle East Land Total Recordable Incidents by Incident Type (Chart 8)</i>	7
<i>Middle East Land Total Lost Time Incidents by Equipment (Chart 9)</i>	8
<i>Middle East Land Total Recordable Incidents by Equipment (Chart 10)</i>	8
<i>Middle East Land Total Lost Time Incidents by Operation (Chart 11)</i>	9
<i>Middle East Land Total Recordable Incidents by Operation (Chart 12)</i>	9
<i>Middle East Land Total Lost Time Incidents by Location (Chart 13)</i>	10
<i>Middle East Land Total Recordable Incidents by Location (Chart 14)</i>	10
<i>Middle East Land Total Lost Time Incidents by Time in Service (Chart 15)</i>	11
<i>Middle East Land Total Recordable Incidents by Time in Service (Chart 16)</i>	11
<i>Middle East Land Total Lost Time Incidents by Time of Day (Chart 17)</i>	12
<i>Middle East Land Total Recordable Incidents by Time of Day (Chart 18)</i>	12



IADC 2006 Middle East Land Totals (Table 1)

	<u>Total</u>
Total Man-hours	63,516,584
Total Medical Treatment Incidents	147
Total Restricted Work Incidents	87
Total Lost Time Incidents	74
Total Fatalities	1
Total Recordables	309
MTO Incidence Rate	0.46
RWC Incidence Rate	0.27
LTI Incidence Rate	0.24
LTI Frequency Rate	1.18
DART Incidence Rate	0.51
DART Frequency Rate	2.55
Recordable Incidence Rate	0.97
Recordable Frequency Rate	4.86

Companies Reporting: Land – 16

Medical Treatment Incidence Rate = MTOs X 200,000

Restricted Work Incidence Rate = RWCs X 200,000

Lost Time Incidence Rate = LTIs + FTLs X 200,000

DART Incidence Rate = LTIs + RWC X 200,000

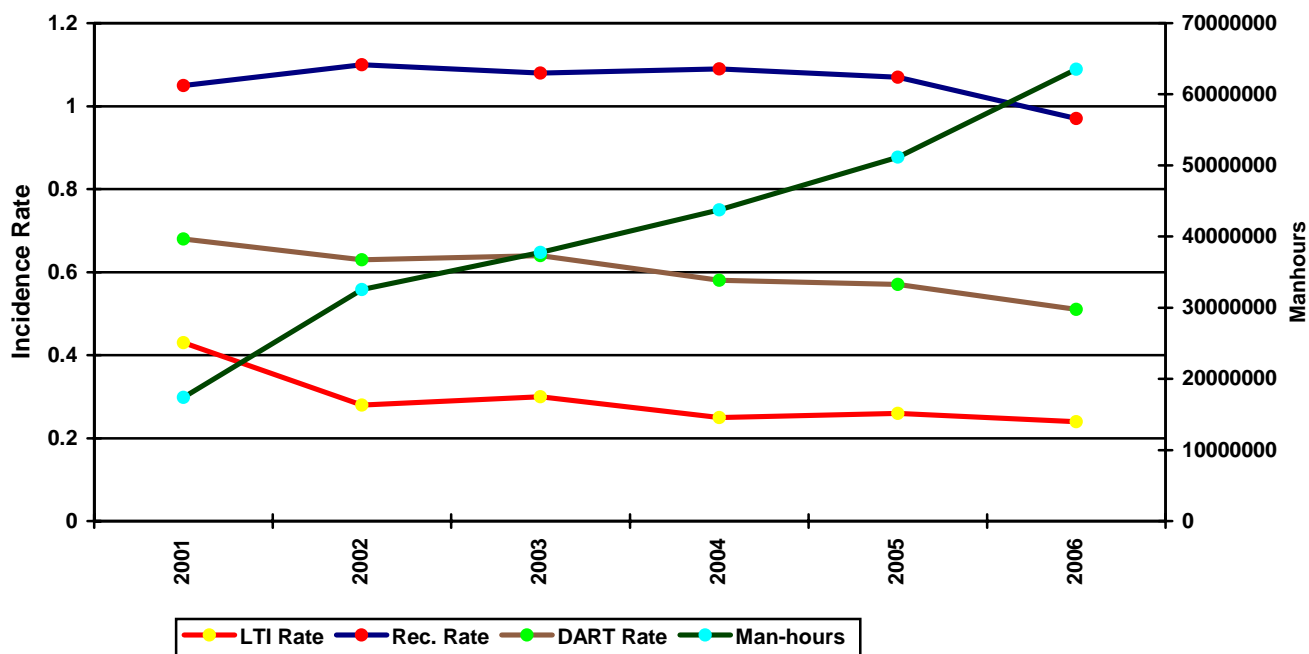
Recordable Incidence Rate = RCRD X 200,000

Lost Time Frequency Rate = LTIs +FTLs X 1,000,000

DART Frequency Rate = LTIs + RWC X 1,000,000

Recordable Frequency Rate = RCRD X 1,000,000

Middle East Land Total LTI & Recordable Incidence Rates vs Man-hours (Figure 1)

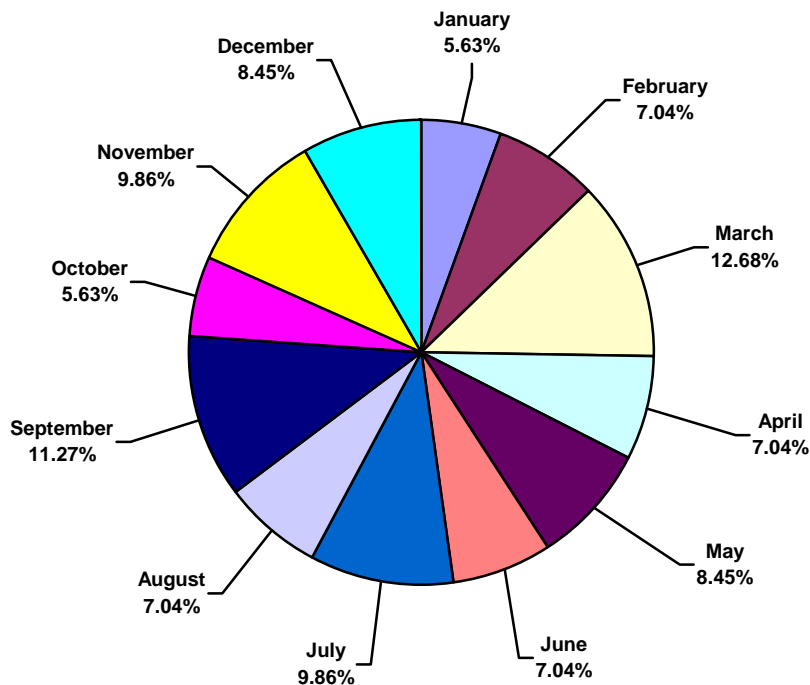




IADC 2006 Middle East Land Charts

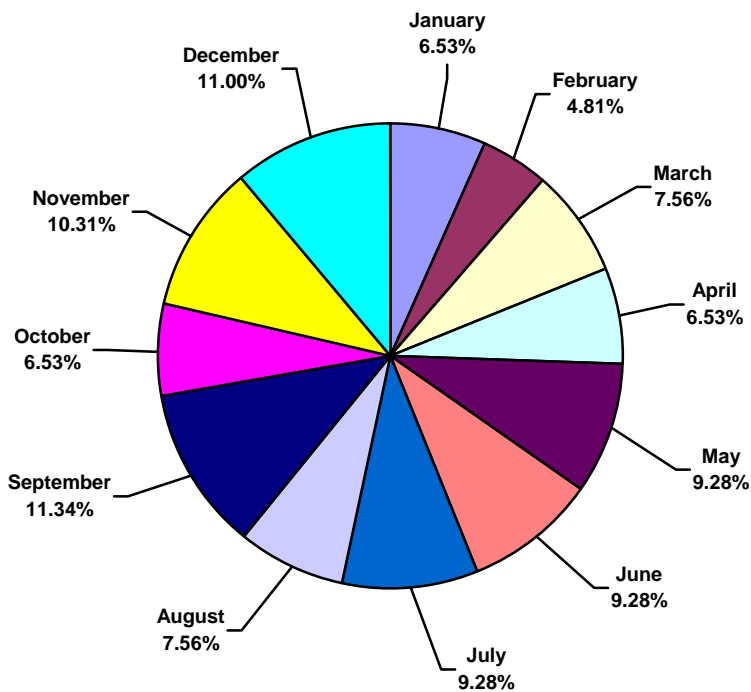
Middle East Land Total Lost Time Incidents by Month (Chart 1)

Based on 71 Incidents



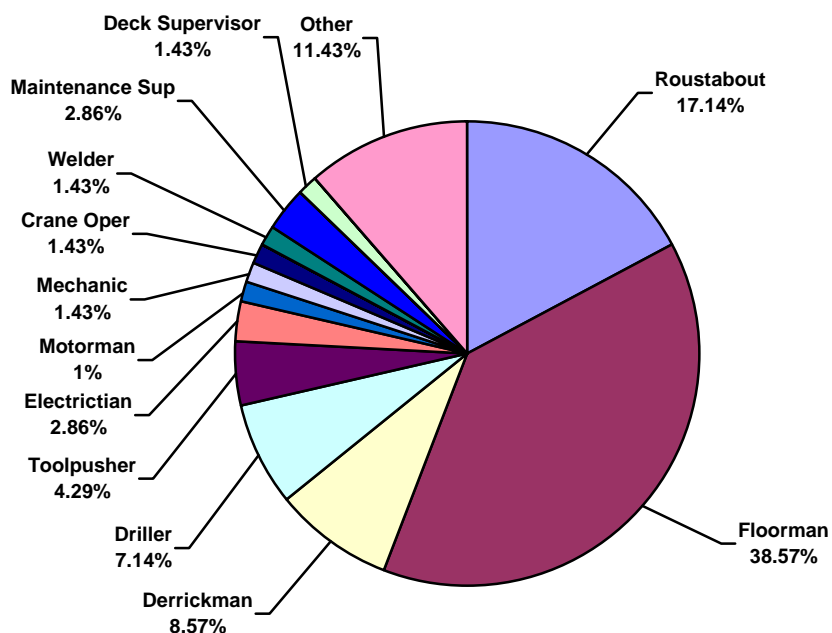
Middle East Land Total Recordable Incidents by Month (Chart 2)

Based on 291 Incidents

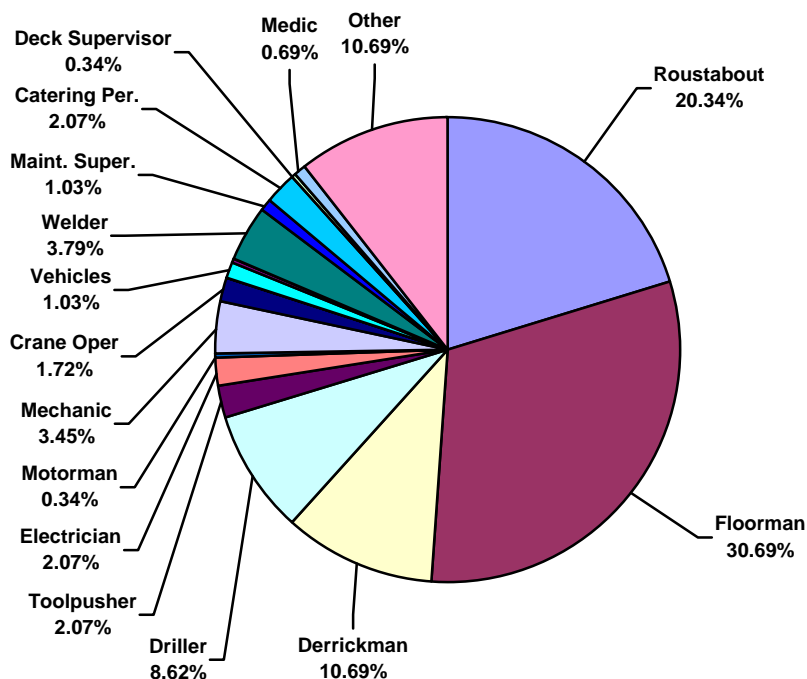




Middle East Land Total Lost Time Incidents by Occupation (Chart 3)
Based on 70 Incidents

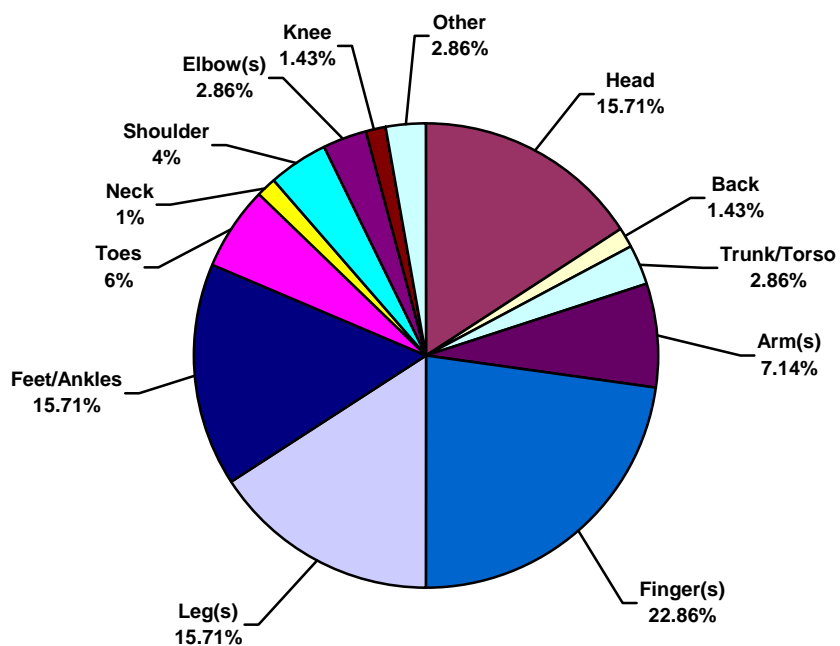


Middle East Land Total Recordable Incidents by Occupation (Chart 4)
Based on 290 Incidents

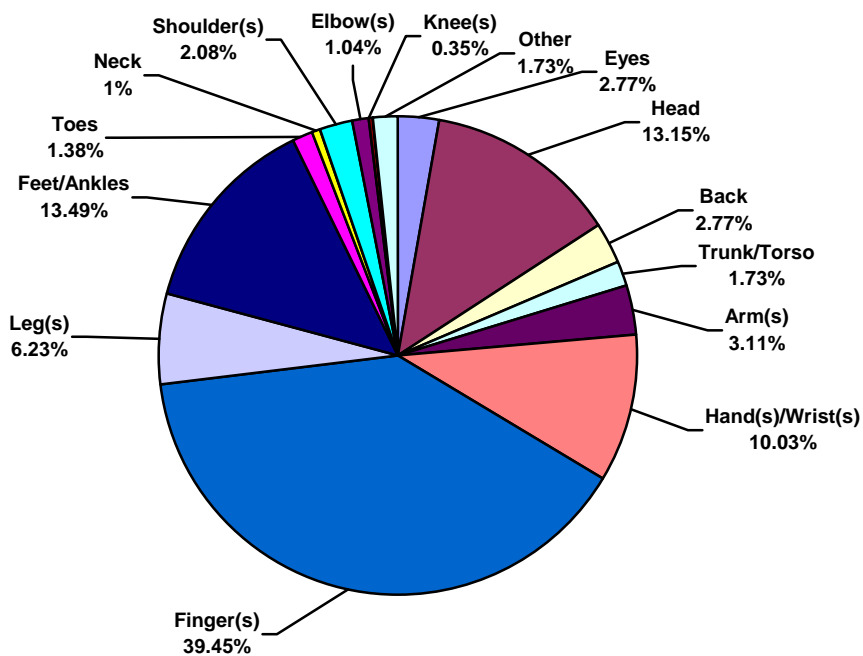




Middle East Land Total Lost Time Incidents by Body Part (Chart 5)
Based on 70 Incidents

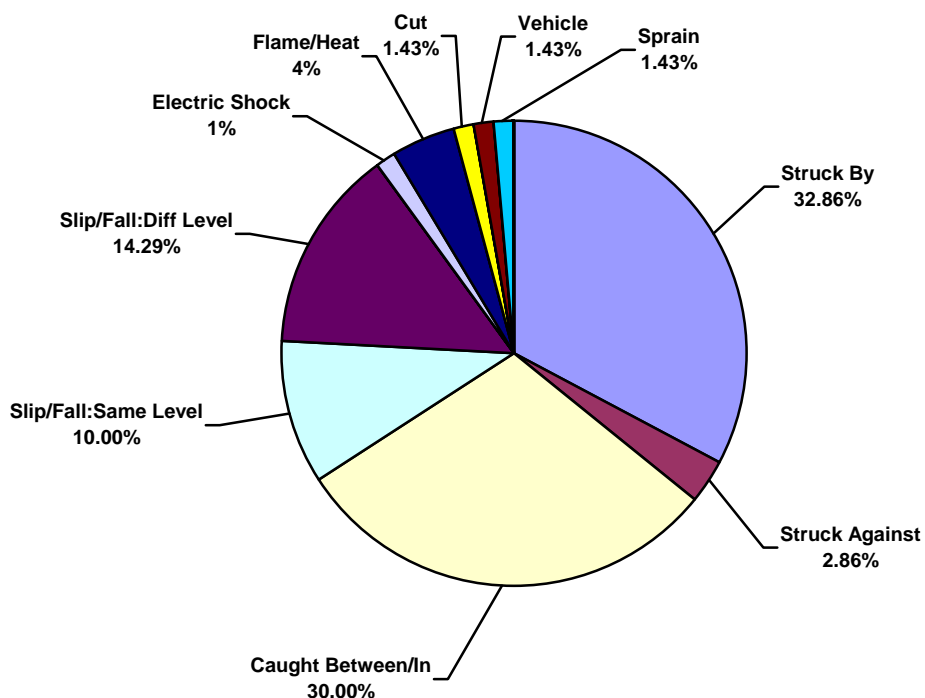


Middle East Land Total Recordable Incidents by Body Part (Chart 6)
Based on 289 Incidents

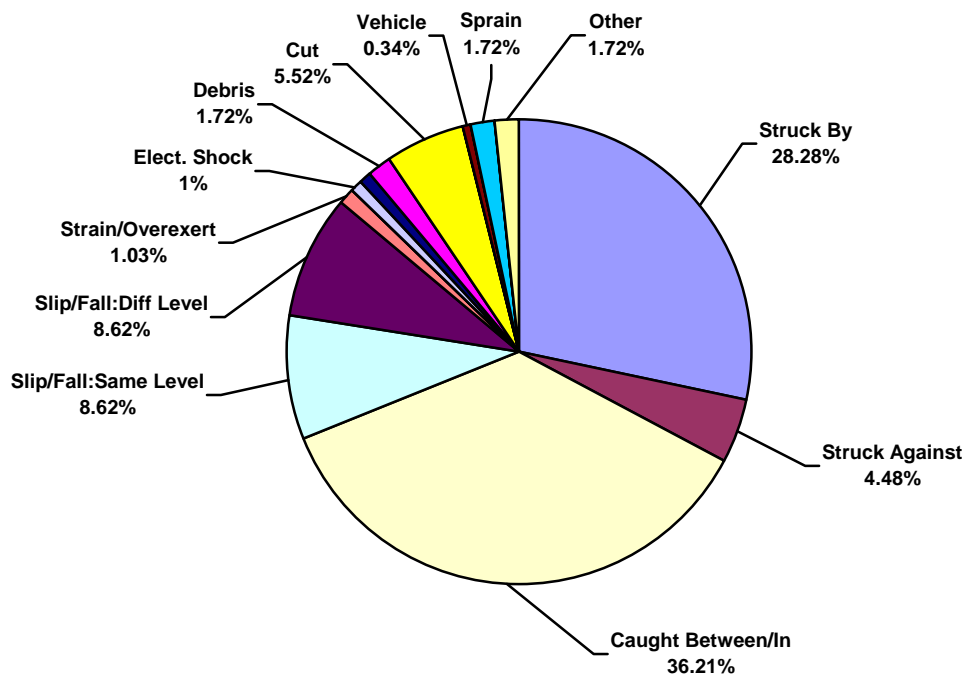




Middle East Land Total Lost Time Incidents by Incident Type (Chart 7)
Based on 70 Incidents

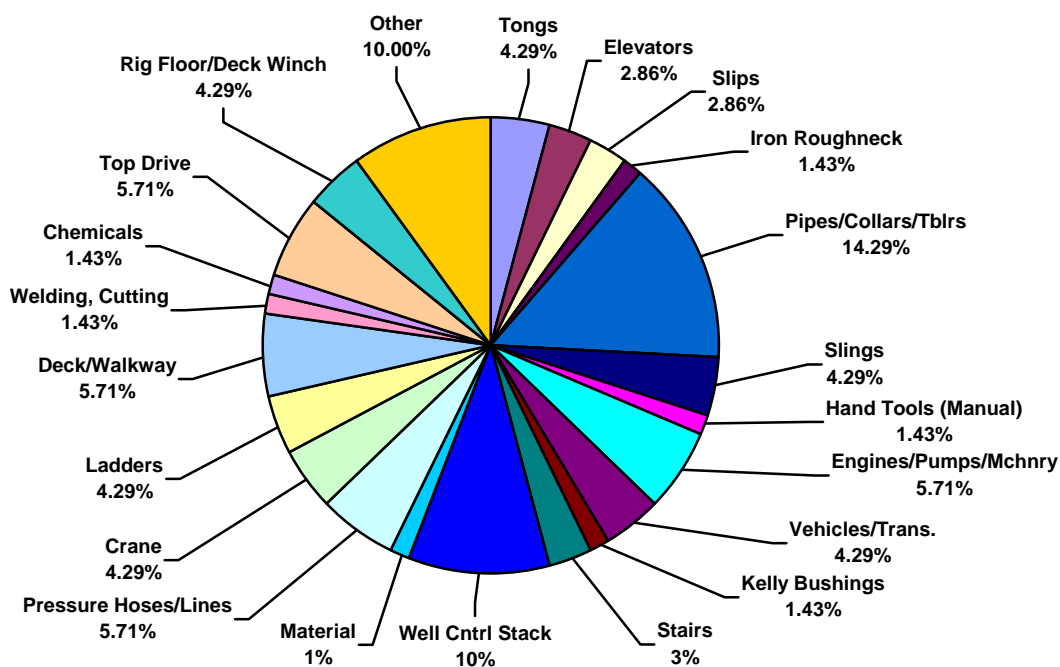


Middle East Land Total Recordable Incidents by Incident Type (Chart 8)
Based on 290 Incidents

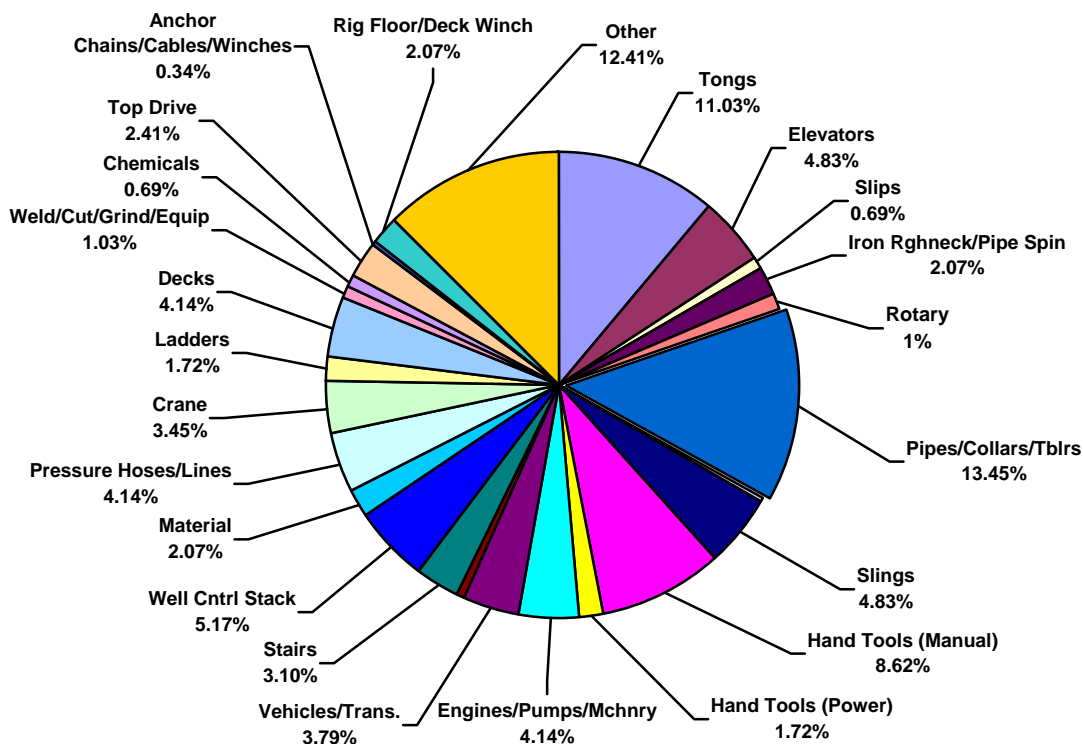




Middle East Land Total Lost Time Incidents by Equipment (Chart 9)
Based on 70 Incidents

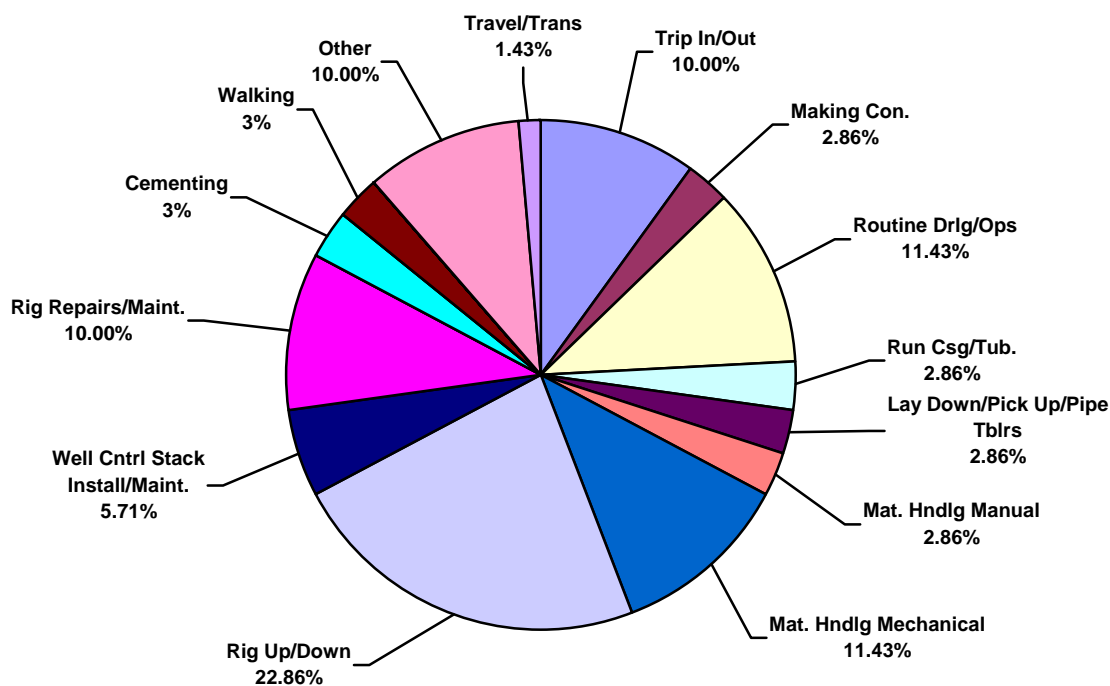


Middle East Land Total Recordable Incidents by Equipment (Chart 10)
Based on 290 Incidents

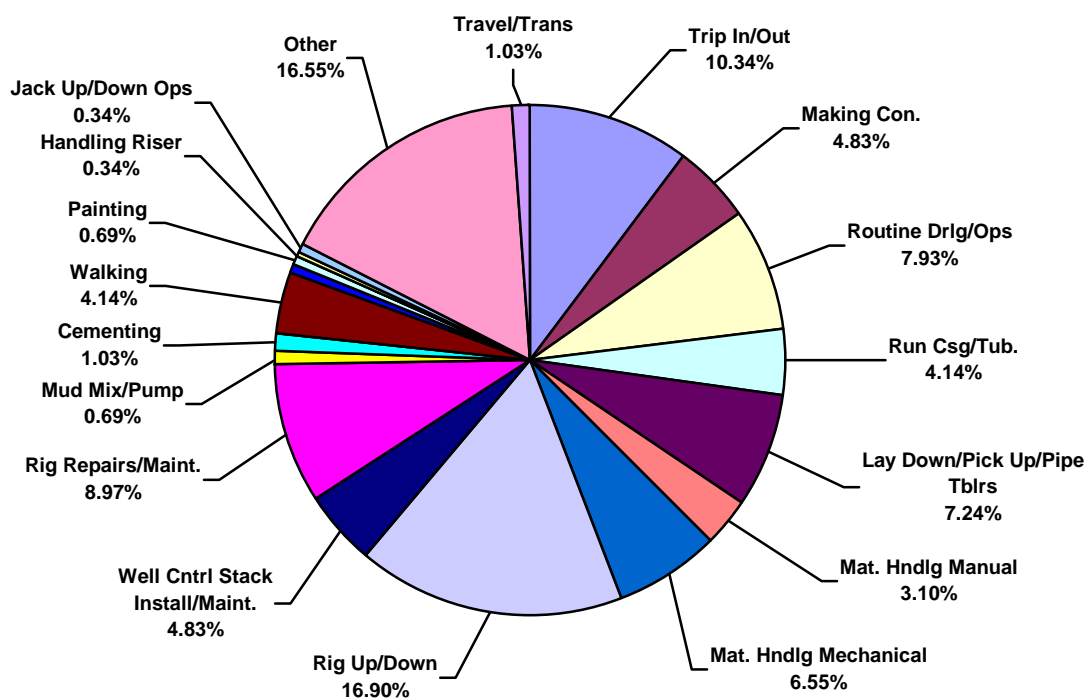




Middle East Land Total Lost Time Incidents by Operation (Chart 11)
Based on 70 Incidents

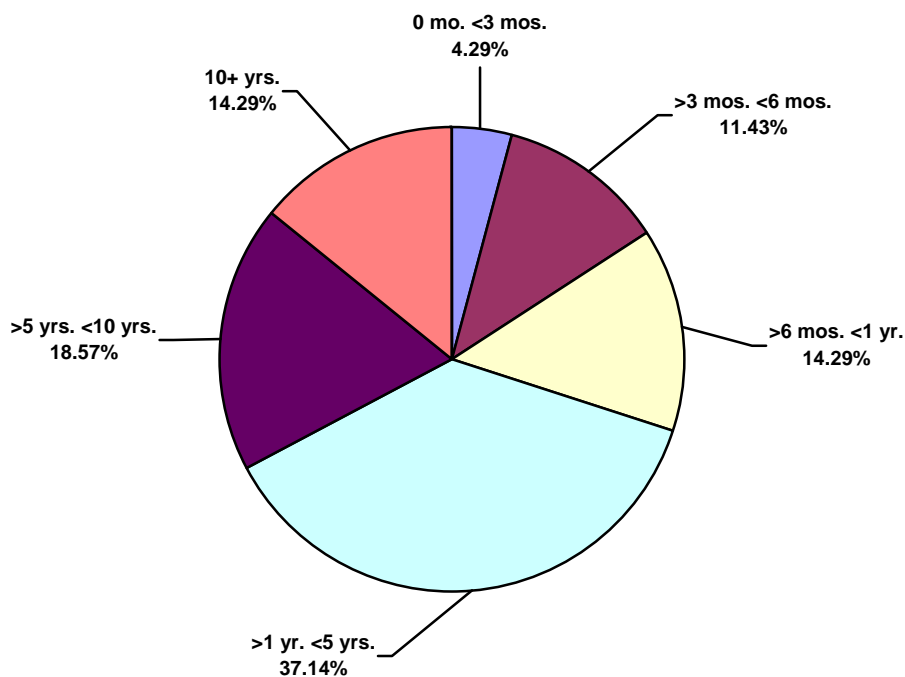


Middle East Land Total Recordable Incidents by Operation (Chart 12)
Based on 290 Incidents

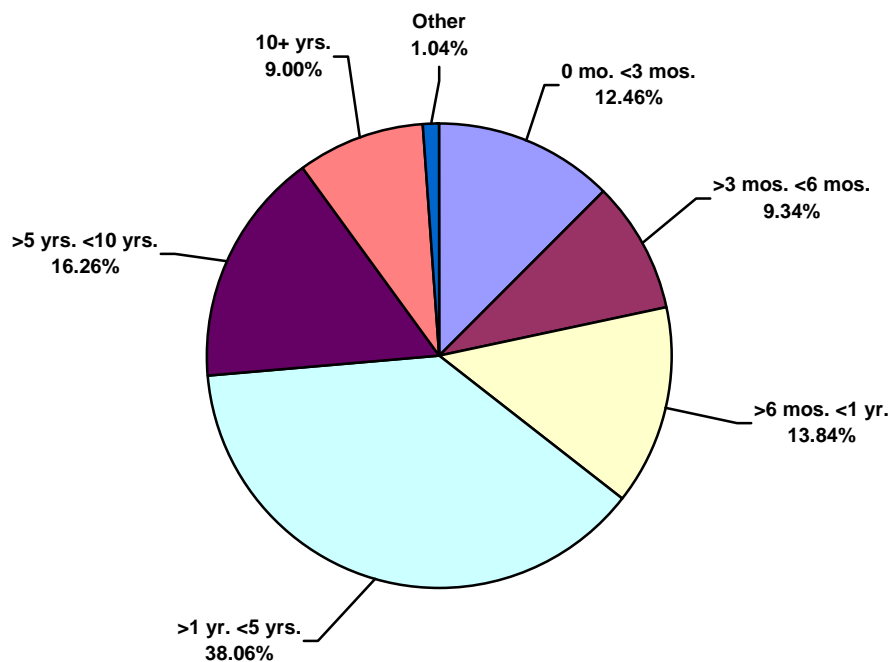




Middle East Land Total Lost Time Incidents by Time in Service (Chart 15)
Based on 70 Incidents

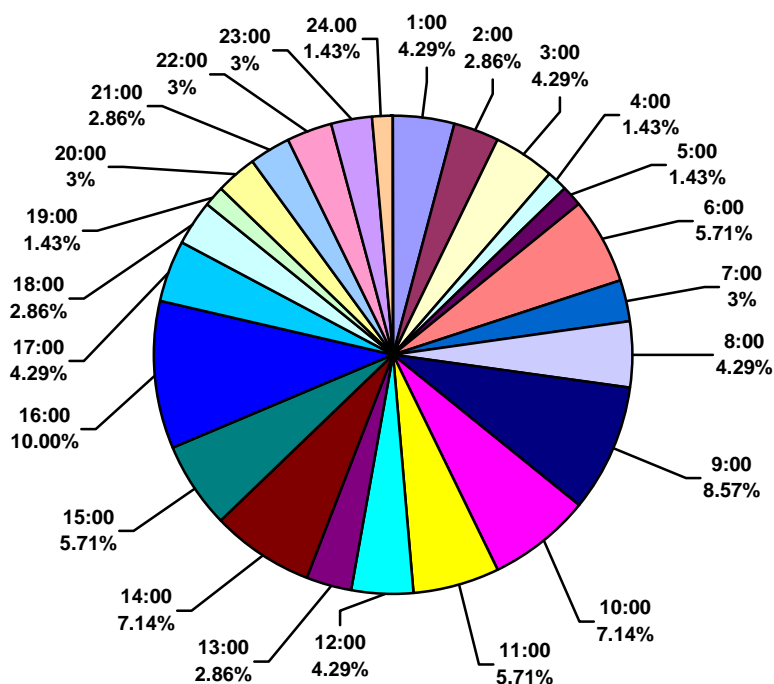


Middle East Land Total Recordable Incidents by Time in Service (Chart 16)
Based on 289 Incidents





Middle East Land Total Lost Time Incidents by Time of Day (Chart 17)
Based on 70 Incidents



Middle East Land Total Recordable Incidents by Time of Day (Chart 18)
Based on 288 Incidents

