



IADC ASP PROGRAM

2006



Summary of Occupational Incidents (Central/South America Water Totals)



Table of Contents

(Table of Contents is Hyperlinked, Just click on Topic & go)

| | |
|--|----|
| IADC 2006 CENTRAL/SOUTH AMERICA WATER TOTALS (TABLE 1)..... | 3 |
| <i>Central/South America Water Total Incidence Rates vs Man-hours (Figure 1).....</i> | 3 |
| IADC 2005 CENTRAL/SOUTH AMERICA WATER CHARTS | 4 |
| <i>Central/South America Water Total Lost Time Incidents by Month (Chart 1).....</i> | 4 |
| <i>Central/South America Water Total Recordable Incidents by Month (Chart 2).....</i> | 4 |
| <i>Central/South America Water Total Lost Time Incidents by Occupation (Chart 3)</i> | 5 |
| <i>Central/South America Water Total Recordable Incidents by Occupation (Chart 4).....</i> | 5 |
| <i>Central/South America Water Total Lost Time Incidents by Body Part (Chart 5).....</i> | 6 |
| <i>Central/South America Water Total Recordable Incidents by Body Part (Chart 6).....</i> | 6 |
| <i>Central/South America Water Total Lost Time Incidents by Incident Type (Chart 7).....</i> | 7 |
| <i>Central/South America Water Total Recordable Incidents by Incident Type (Chart 8).....</i> | 7 |
| <i>Central/South America Water Total Lost Time Incidents by Equipment (Chart 9).....</i> | 8 |
| <i>Central/South America Water Total Recordable Incidents by Equipment (Chart 10).....</i> | 8 |
| <i>Central/South America Water Total Lost Time Incidents by Operation (Chart 11).....</i> | 9 |
| <i>Central/South America Water Total Recordable Incidents by Operation (Chart 12).....</i> | 9 |
| <i>Central/South America Water Total Lost Time Incidents by Location (Chart 13).....</i> | 10 |
| <i>Central/South America Water Total Recordable Incidents by Location (Chart 14)</i> | 10 |
| <i>Central/South America Water Total Lost Time Incidents by Time in Service (Chart 15).....</i> | 11 |
| <i>Central/South America Water Total Recordable Incidents by Time in Service (Chart 16).....</i> | 11 |
| <i>Central/South America Water Total Lost Time Incidents by Time of Day (Chart 17).....</i> | 12 |
| <i>Central/South America Water Total Recordable Incidents by Time of Day (Chart 18).....</i> | 12 |



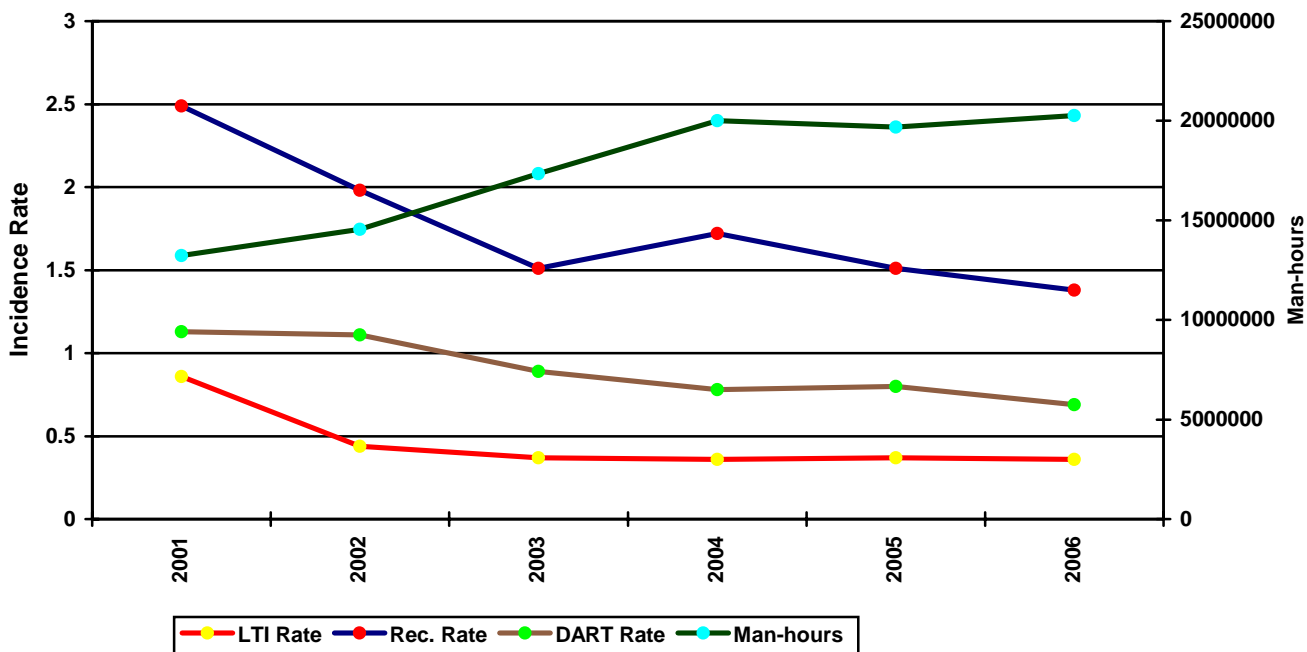
IADC 2006 Central/South America Water Totals (Table 1)

| | <u>Total</u> |
|-----------------------------------|--------------|
| Total Man-hours | 20,257,811 |
| Total Medical Treatment Incidents | 70 |
| Total Restricted Work Incidents | 34 |
| Total Lost Time Incidents | 35 |
| Total Fatalities | 1 |
| Total Recordables | 140 |
| MTO Incidence Rate | 0.69 |
| RWC Incidence Rate | 0.34 |
| LTI Incidence Rate | 0.36 |
| LTI Frequency Rate | 1.78 |
| DART Incidence Rate | 0.69 |
| DART Frequency Rate | 3.46 |
| Recordable Incidence Rate | 1.38 |
| Recordable Frequency Rate | 6.91 |

Companies Reporting: Water – 14

Medical Treatment Incidence Rate = MTOs X 200,000
 Restricted Work Incidence Rate = RWCs X 200,000
 Lost Time Incidence Rate = LTIs + FTLs X 200,000
 DART Incidence Rate = LTIs + RWC X 200,000
 Recordable Incidence Rate = RCRD X 200,000
 Lost Time Frequency Rate = LTIs +FTLs X 1,000,000
 DART Frequency Rate = LTIs + RWC X 1,000,000
 Recordable Frequency Rate = RCRD X 1,000,000

Central/South America Water Total Incidence Rates vs Man-hours (Figure 1)

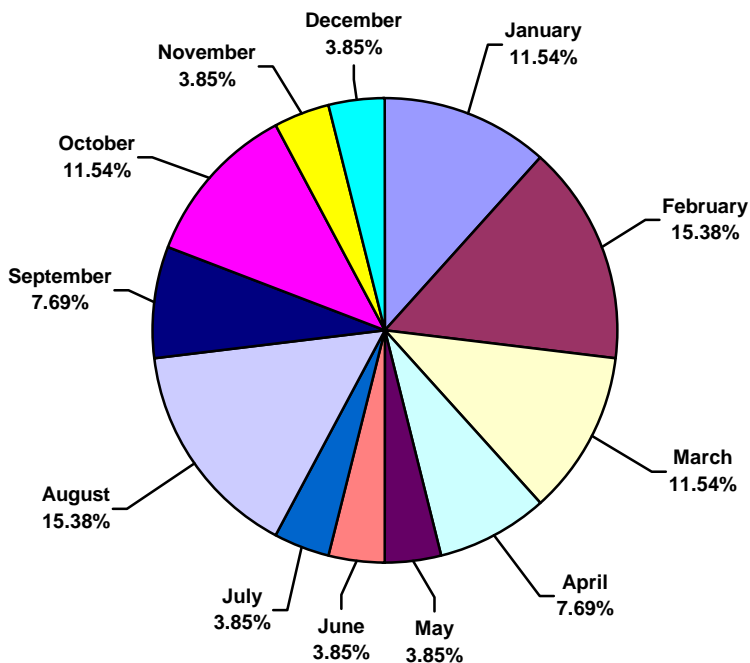




IADC 2005 Central/South America Water Charts

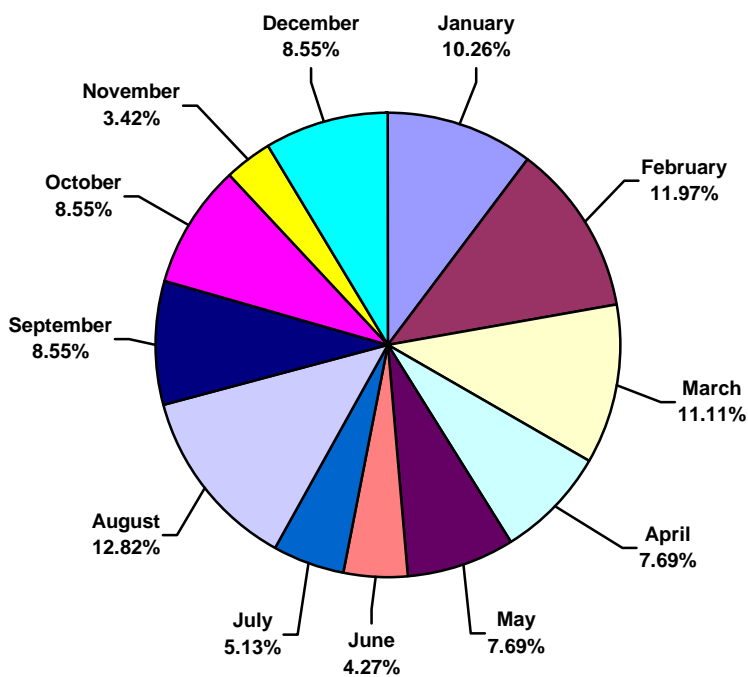
Central/South America Water Total Lost Time Incidents by Month (Chart 1)

Based on 26 Incidents



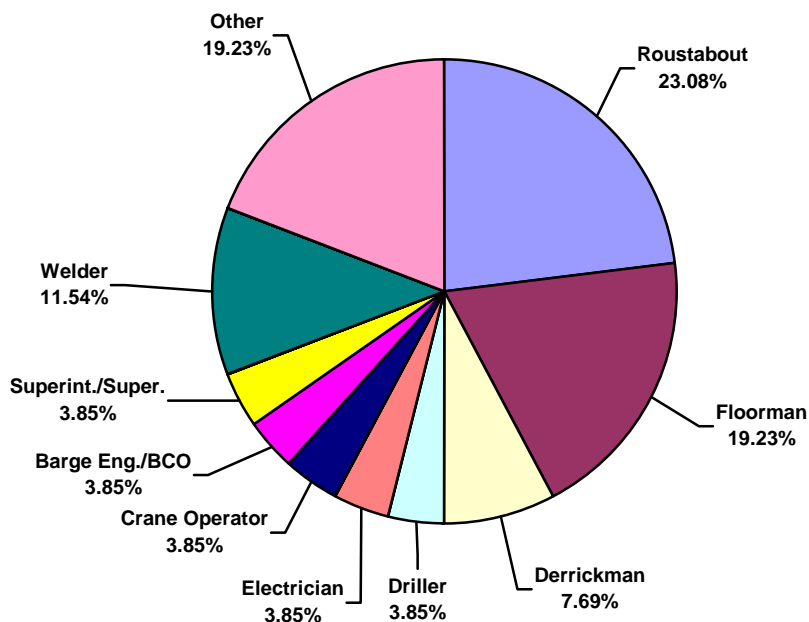
Central/South America Water Total Recordable Incidents by Month (Chart 2)

Based on 117 Incidents

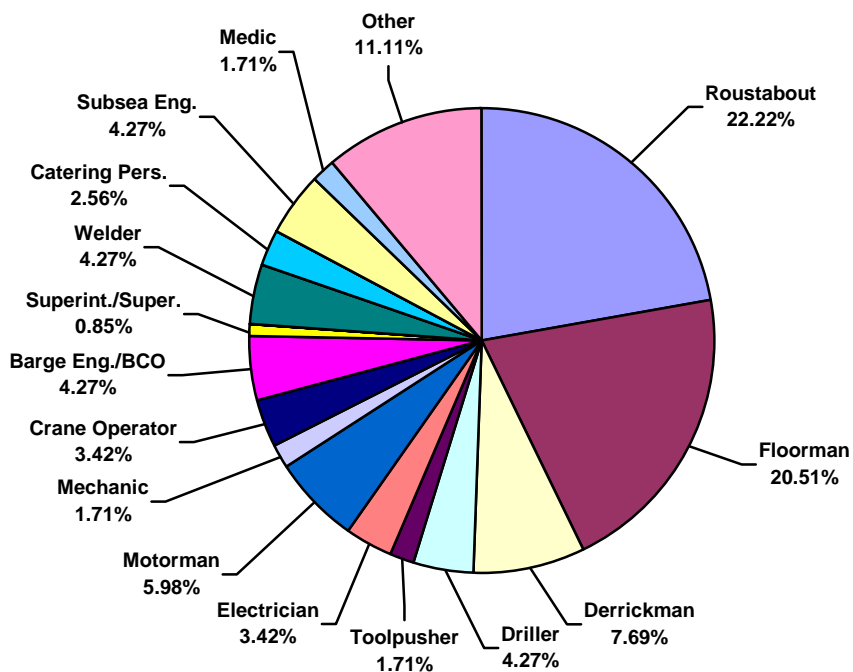




Central/South America Water Total Lost Time Incidents by Occupation (Chart 3)
Based on 26 Incidents

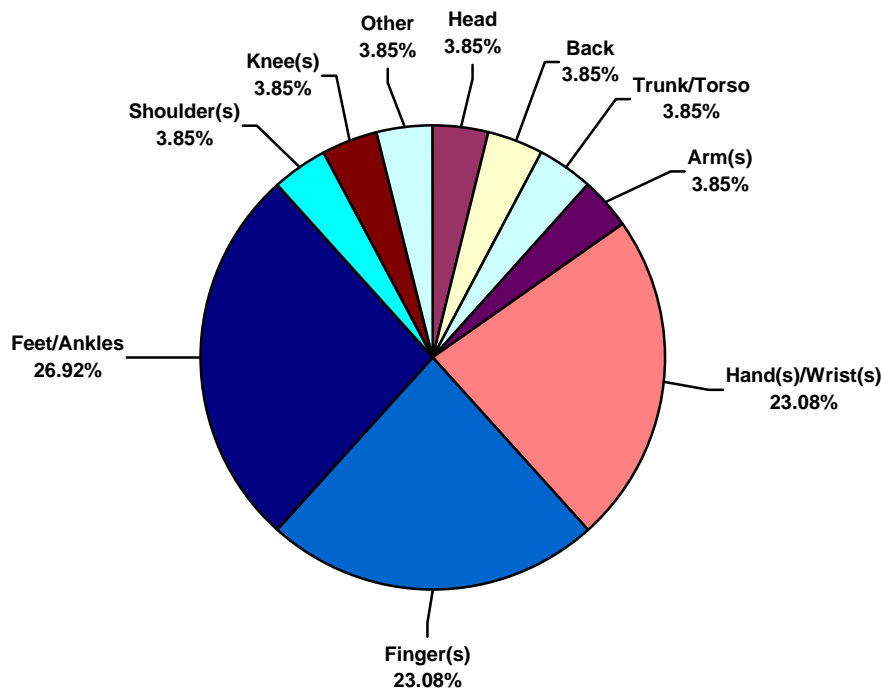


Central/South America Water Total Recordable Incidents by Occupation (Chart 4)
Based on 117 Incidents

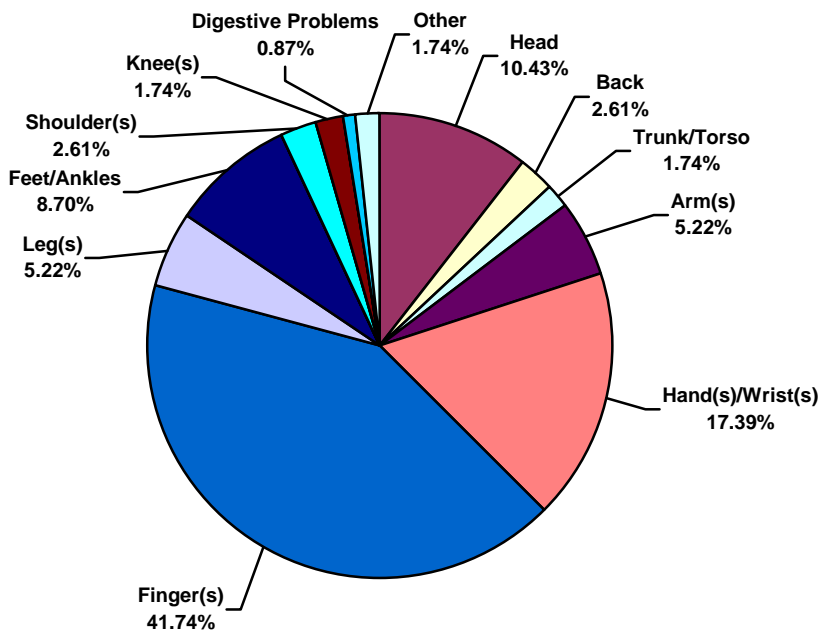




Central/South America Water Total Lost Time Incidents by Body Part (Chart 5)
Based on 26 Incidents

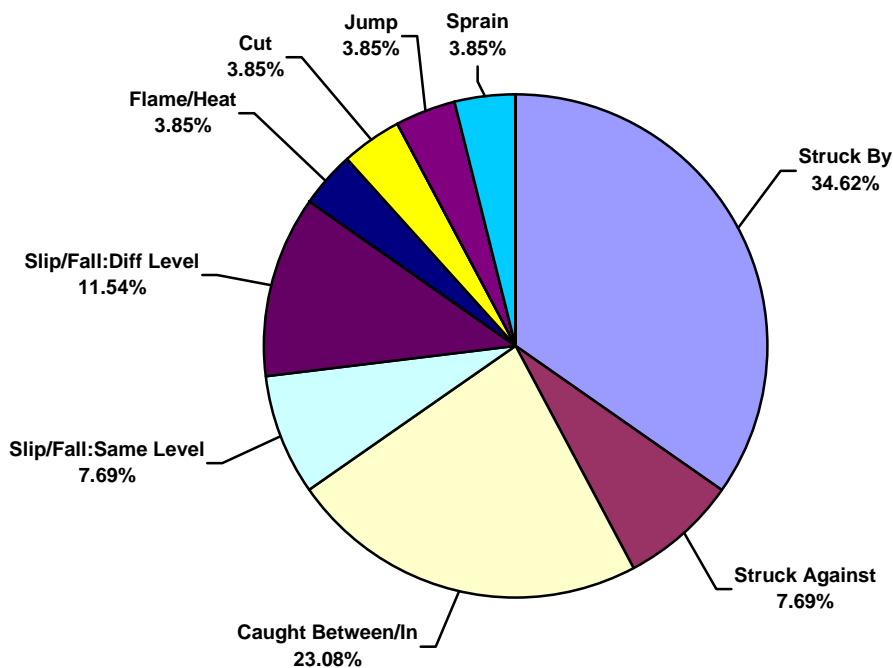


Central/South America Water Total Recordable Incidents by Body Part (Chart 6)
Based on 115 Incidents

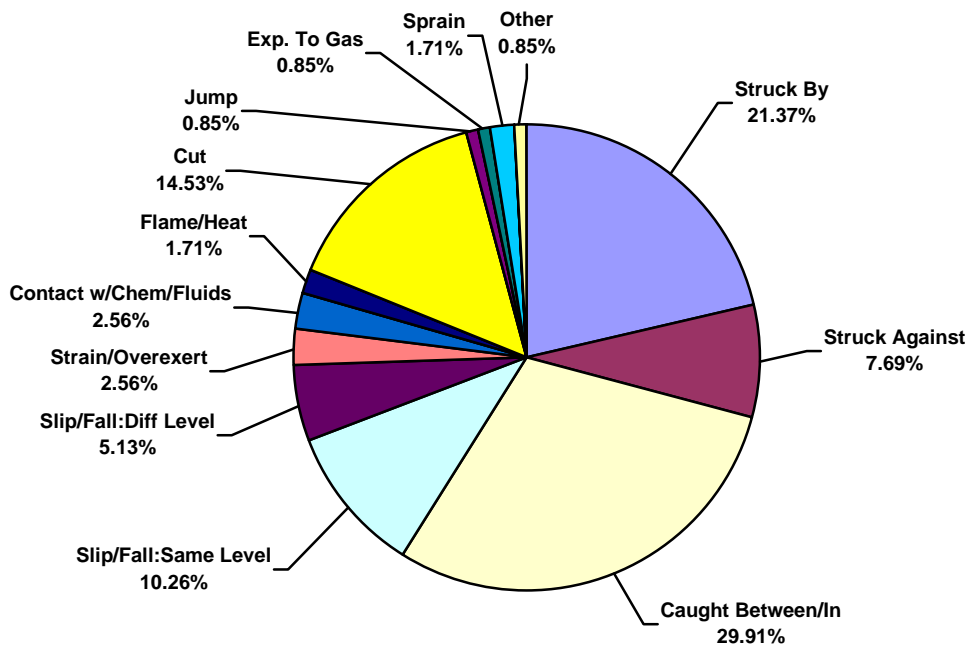




Central/South America Water Total Lost Time Incidents by Incident Type (Chart 7)
Based on 26 Incidents

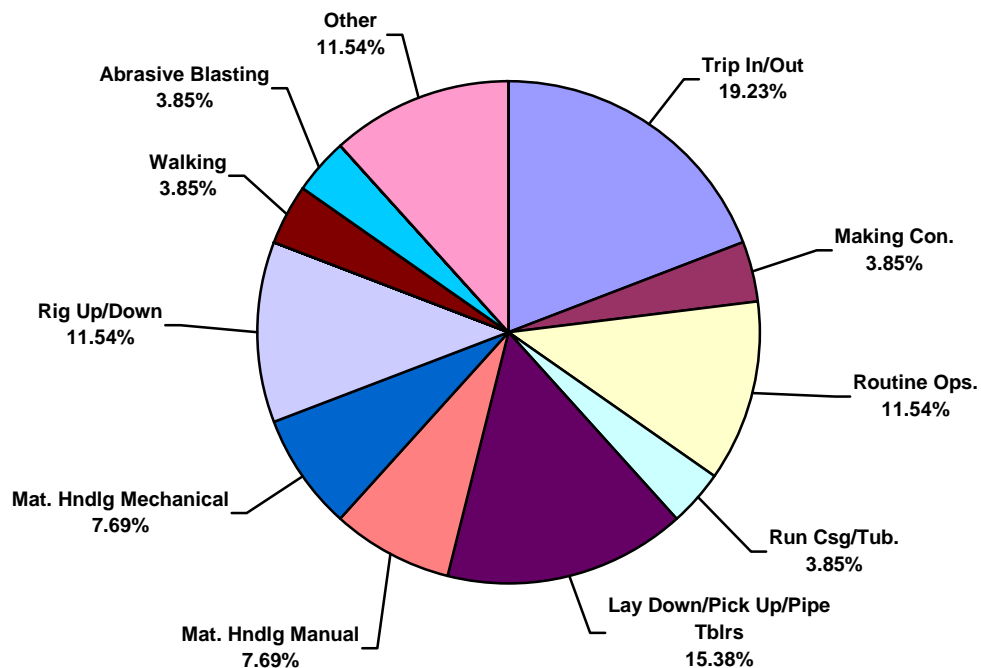


Central/South America Water Total Recordable Incidents by Incident Type (Chart 8)
Based on 117 Incidents

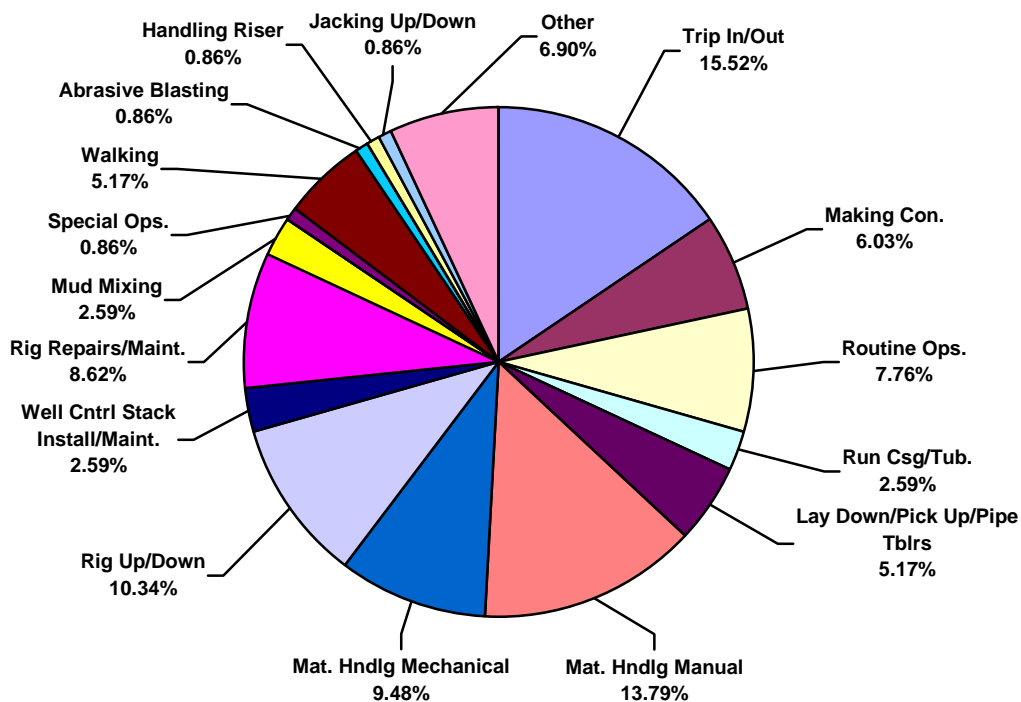




Central/South America Water Total Lost Time Incidents by Operation (Chart 11)
Based on 26 Incidents

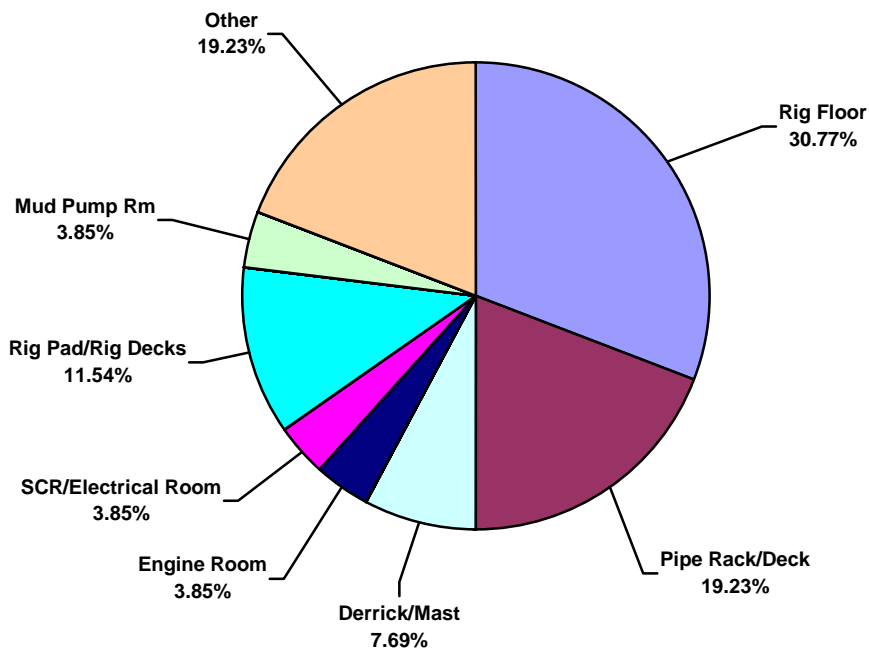


Central/South America Water Total Recordable Incidents by Operation (Chart 12)
Based on 116 Incidents

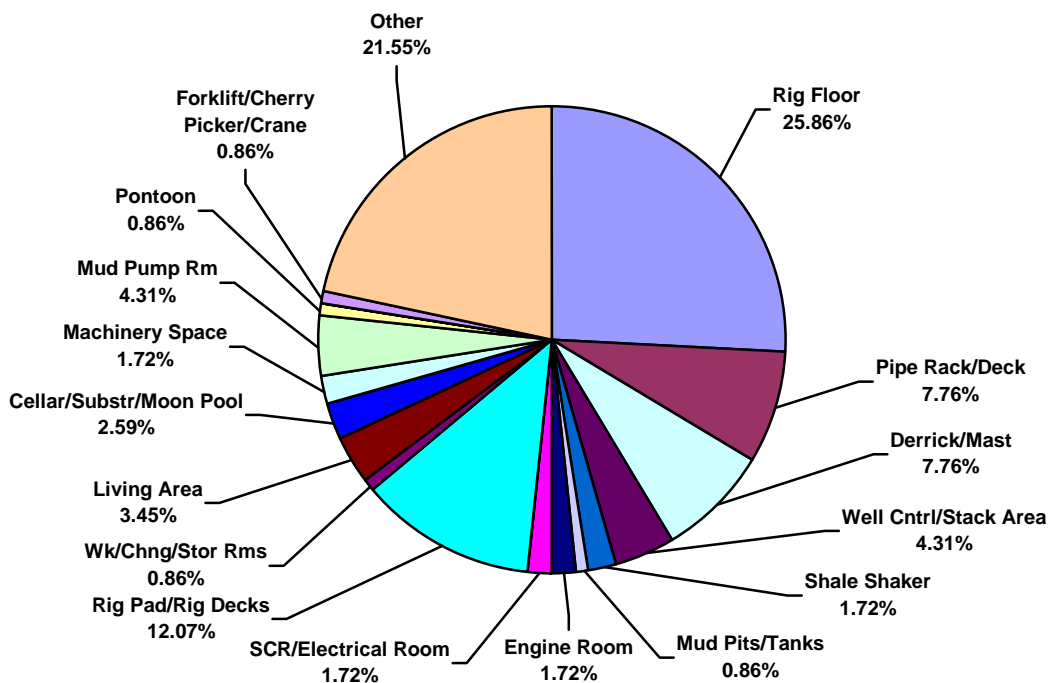




Central/South America Water Total Lost Time Incidents by Location (Chart 13)
Based on 26 Incidents

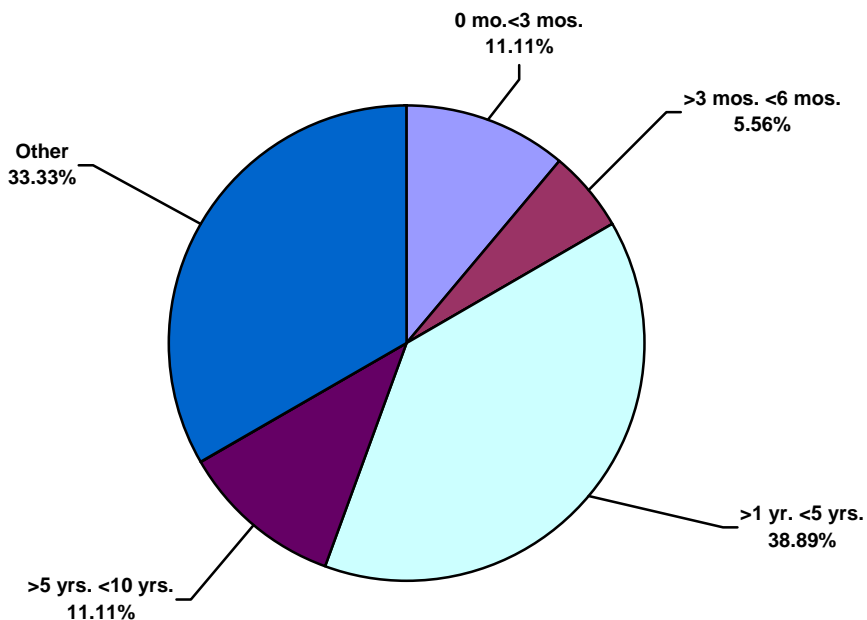


Central/South America Water Total Recordable Incidents by Location (Chart 14)
Based on 116 Incidents

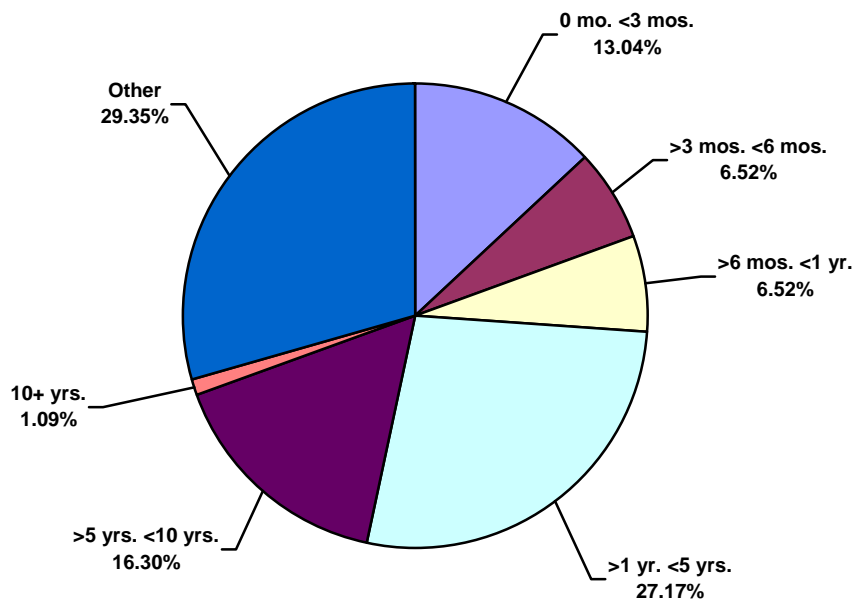




Central/South America Water Total Lost Time Incidents by Time in Service (Chart 15)
Based on 18 Incidents

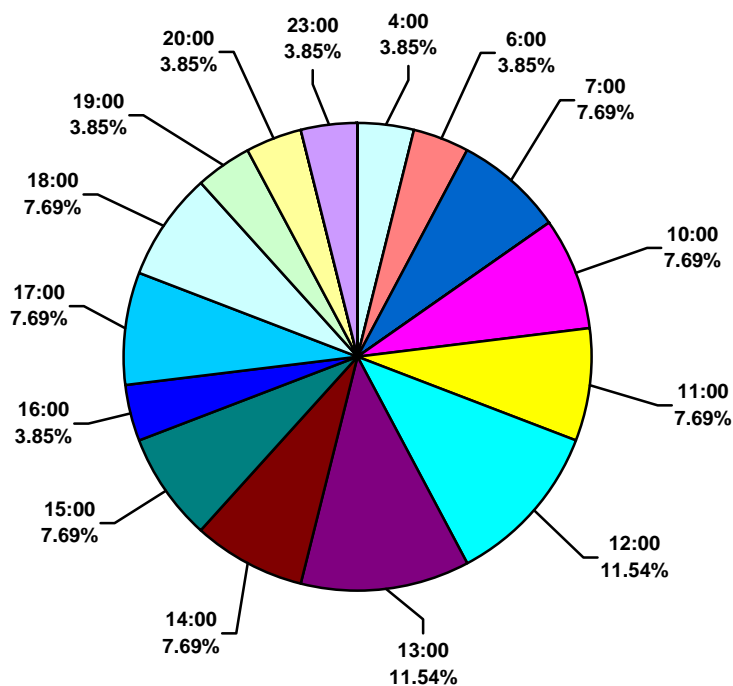


Central/South America Water Total Recordable Incidents by Time in Service (Chart 16)
Based on 92 Incidents





Central/South America Water Total Lost Time Incidents by Time of Day (Chart 17)
Based on 26 Incidents



Central/South America Water Total Recordable Incidents by Time of Day (Chart 18)
Based on 116 Incidents

