



# IADC ASP PROGRAM

2006



## Summary of Occupational Incidents (Central/South America Land Totals)



# Table of Contents

(Table of Contents is Hyperlinked, Just click on Topic & go)

IADC 2006 CENTRAL/SOUTH AMERICA LAND TOTALS (TABLE 1) .....	3
<i>Central/South America Land Total Incidence Rates vs Man-hours (Figure 1)</i> .....	3
IADC 2006 CENTRAL/SOUTH AMERICA LAND CHARTS .....	4
<i>Central/South America Land Total Recordable Incidents by Month (Chart 2)</i> .....	4
<i>Central/South America Land Total Lost Time Incidents by Occupation (Chart 3)</i> .....	5
<i>Central/South America Land Total Recordable Incidents by Occupation (Chart 4)</i> .....	5
<i>Central/South America Land Total Lost Time Incidents by Body Part (Chart 5)</i> .....	6
<i>Central/South America Land Total Recordable Incidents by Body Part (Chart 6)</i> .....	6
<i>Central/South America Land Total Lost Time Incidents by Incident Type (Chart 7)</i> .....	7
<i>Central/South America Land Total Recordable Incidents by Incident Type (Chart 8)</i> .....	7
<i>Central/South America Land Total Lost Time Incidents by Equipment (Chart 9)</i> .....	8
<i>Central/South America Land Total Recordable Incidents by Equipment (Chart 10)</i> .....	8
<i>Central/South America Land Total Lost Time Incidents by Operation (Chart 11)</i> .....	9
<i>Central/South America Land Total Recordable Incidents by Operation (Chart 12)</i> .....	9
<i>Central/South America Land Total Lost Time Incidents by Location (Chart 13)</i> .....	10
<i>Central/South America Land Total Recordable Incidents by Location (Chart 14)</i> .....	10
<i>Central/South America Land Total Lost Time Incidents by Time in Service (Chart 15)</i> .....	11
<i>Central/South America Land Total Recordable Incidents by Time in Service (Chart 16)</i> ...	11
<i>Central/South America Land Total Lost Time Incidents by Time of Day (Chart 17)</i> .....	12
<i>Central/South America Land Total Recordable Incidents by Time of Day (Chart 18)</i> .....	12



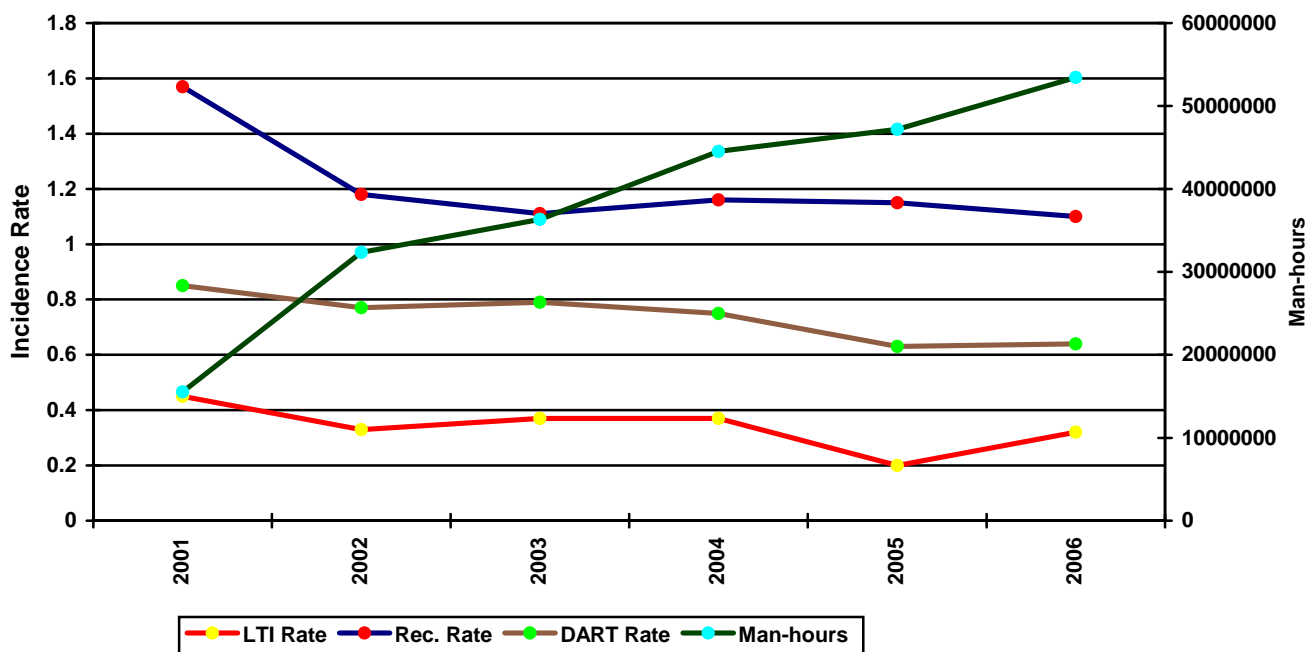
# IADC 2006 Central/South America Land Totals (Table 1)

	<u>Total</u>
Total Manhours	53,433,337
Total Medical Treatment Incidents	124
Total Restricted Work Incidents	85
Total Lost Time Incidents	81
Total Fatalities	4
Total Recordables	294
MTO Incidence Rate	0.46
RWC Incidence Rate	0.32
LTI Incidence Rate	0.31
LTI Frequency Rate	1.59
DART Incidence Rate	0.64
DART Frequency Rate	3.18
Recordable Incidence Rate	1.10
Recordable Frequency Rate	5.50

Companies Reporting: Land – 13

Medical Treatment Incidence Rate = MTOs X 200,000  
 Restricted Work Incidence Rate = RWCs X 200,000  
 Lost Time Incidence Rate = LTIs + FTLs X 200,000  
 DART Incidence Rate = LTIs + RWC X 200,000  
 Recordable Incidence Rate = RCRD X 200,000  
 Lost Time Frequency Rate = LTIs +FTLs X 1,000,000  
 DART Frequency Rate = LTIs + RWC X 1,000,000  
 Recordable Frequency Rate = RCRD X 1,000,000

Central/South America Land Total Incidence Rates vs Man-hours (Figure 1)

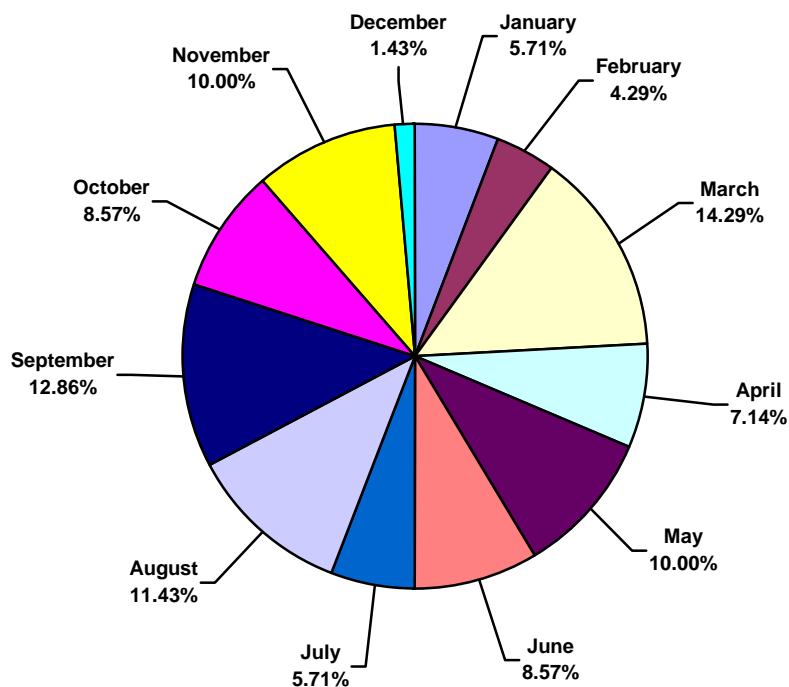




## IADC 2006 Central/South America Land Charts

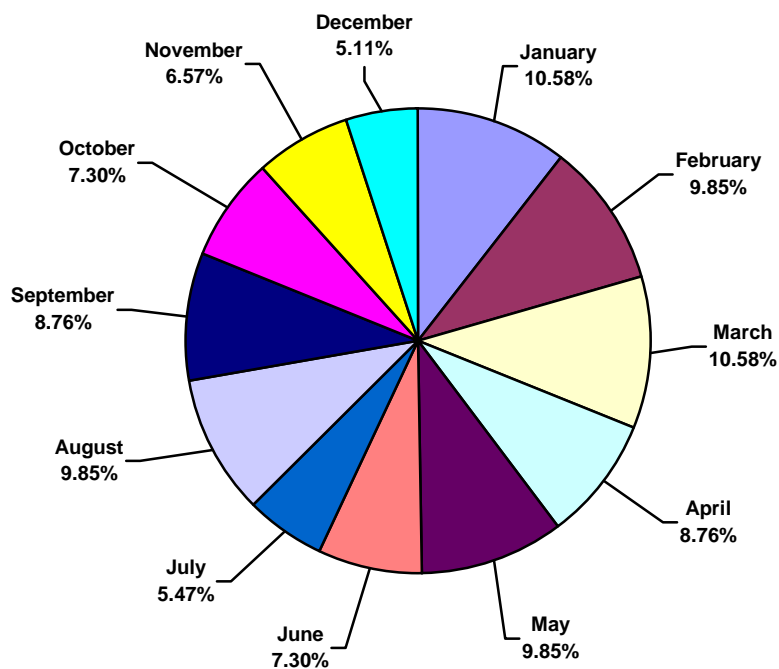
### Central/South America Land Total Lost Time Incidents by Month (Chart 1)

Based on 70 Incidents



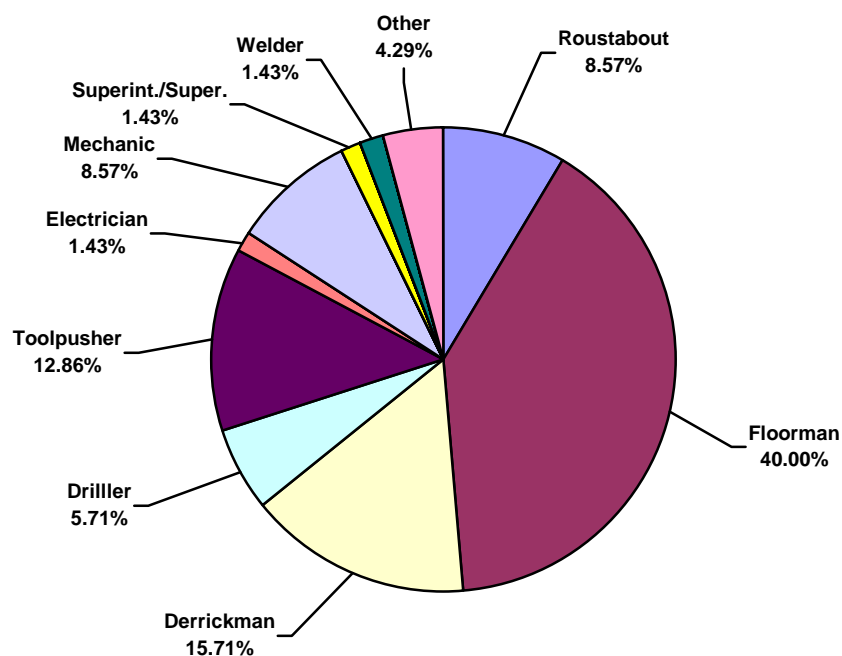
### Central/South America Land Total Recordable Incidents by Month (Chart 2)

Based on 274 Incidents

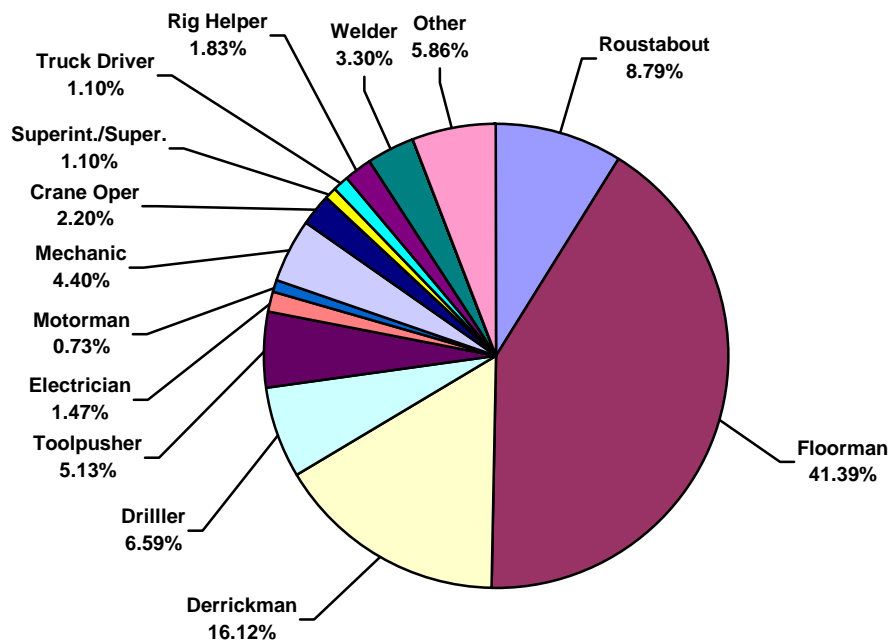




**Central/South America Land Total Lost Time Incidents by Occupation (Chart 3)**  
Based on 70 Incidents

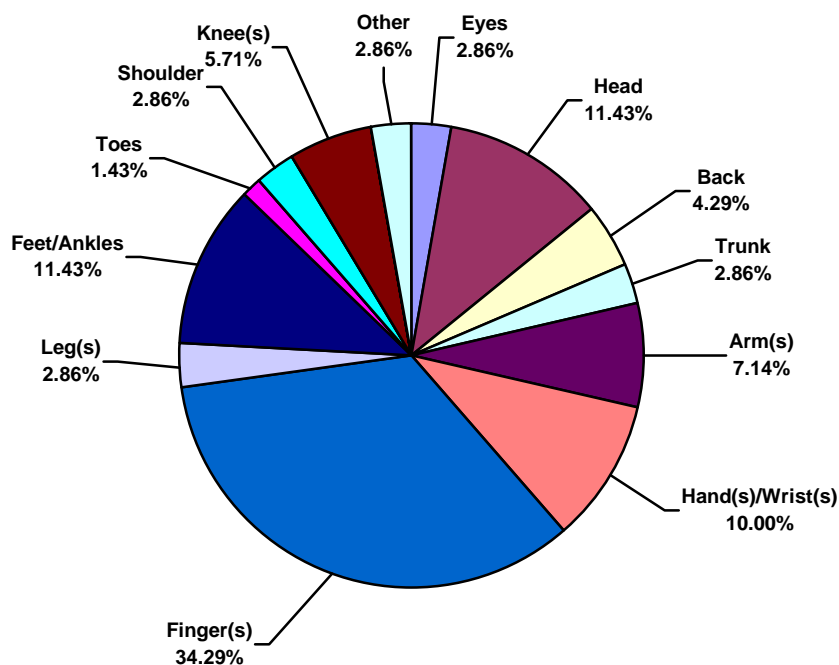


**Central/South America Land Total Recordable Incidents by Occupation (Chart 4)**  
Based on 273 Incidents

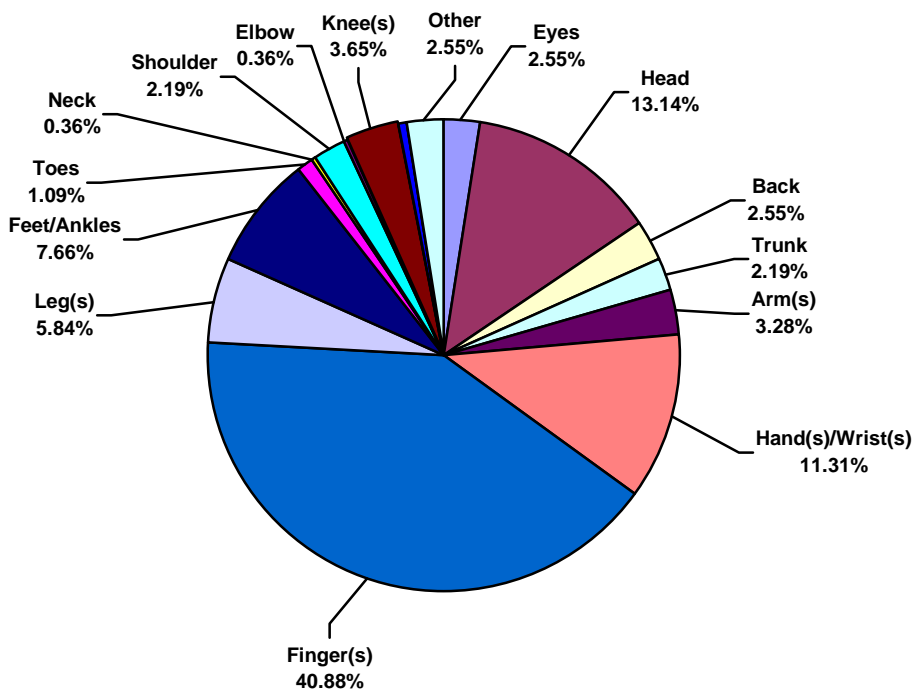




**Central/South America Land Total Lost Time Incidents by Body Part (Chart 5)**  
Based on 70 Incidents

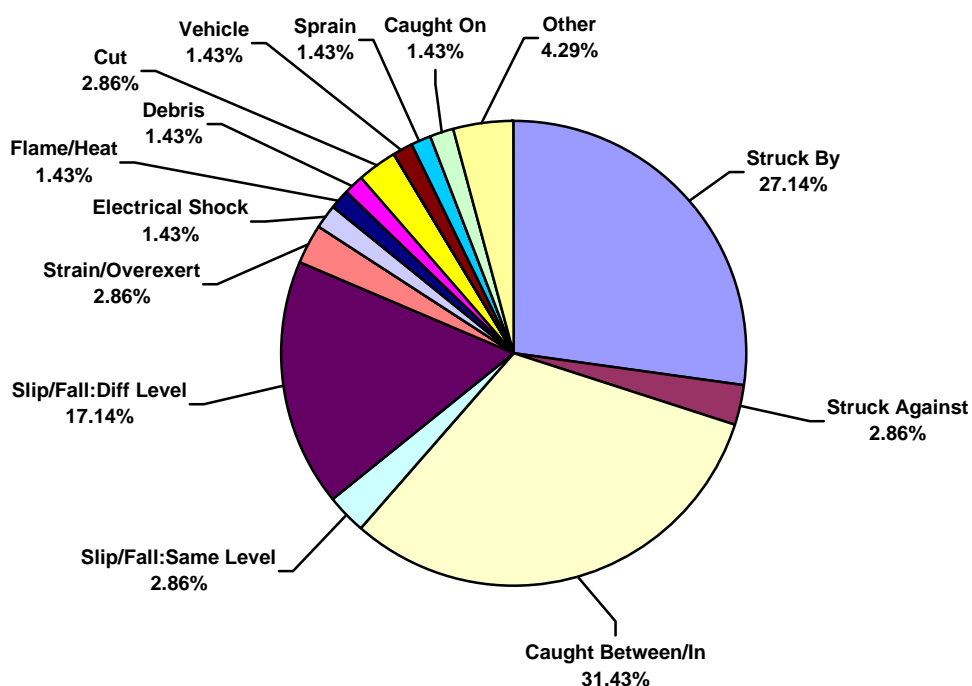


**Central/South America Land Total Recordable Incidents by Body Part (Chart 6)**  
Based on 274 Incidents

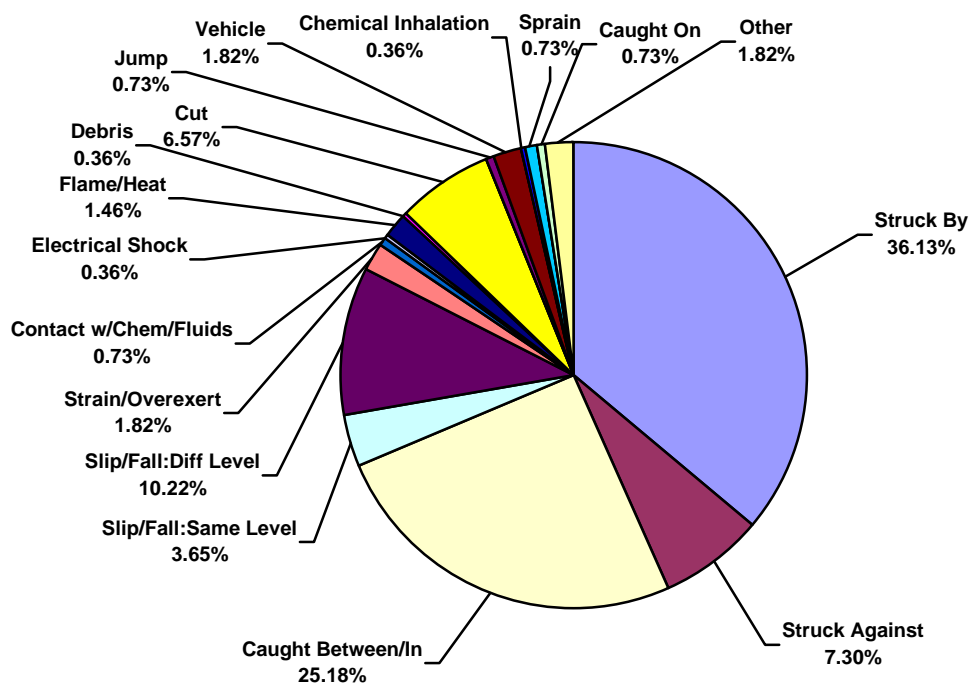




**Central/South America Land Total Lost Time Incidents by Incident Type (Chart 7)**  
Based on 70 Incidents

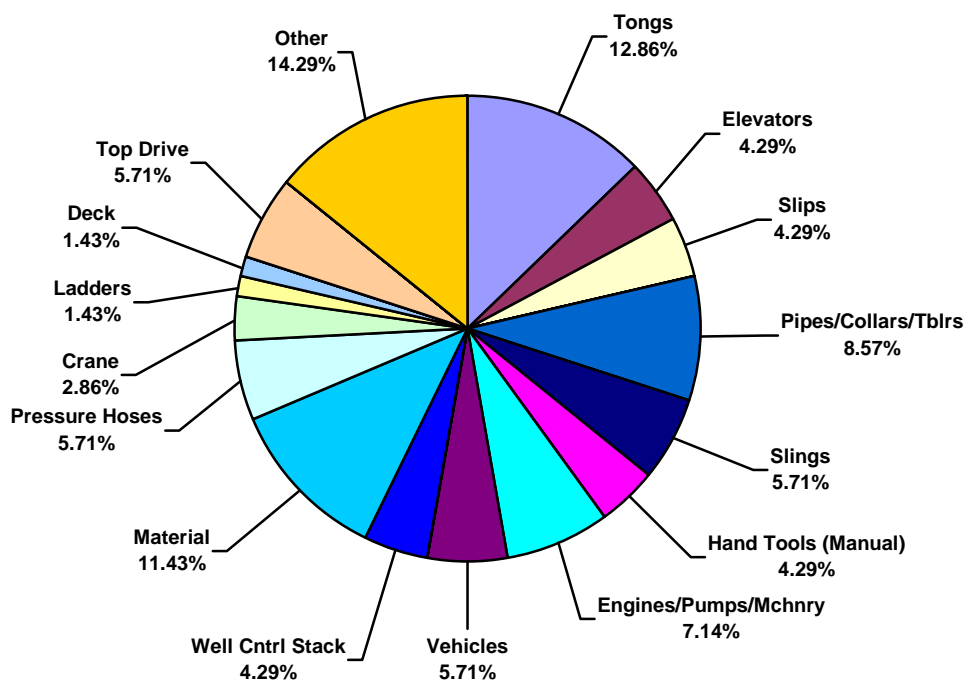


**Central/South America Land Total Recordable Incidents by Incident Type (Chart 8)**  
Based on 274 Incidents

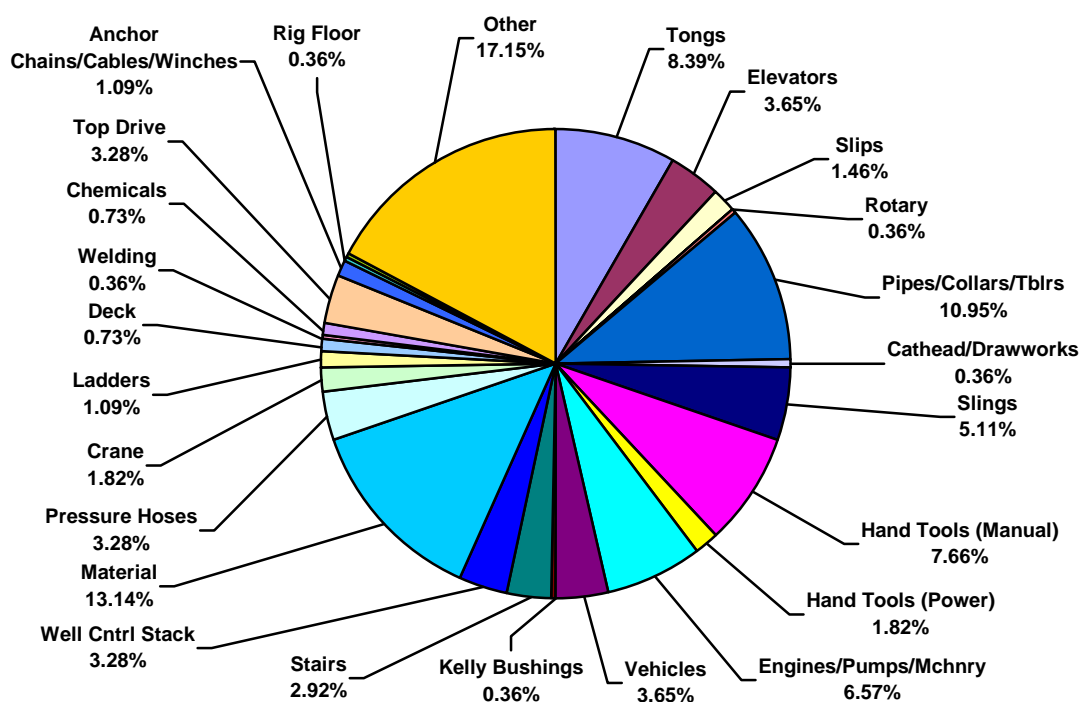




**Central/South America Land Total Lost Time Incidents by Equipment (Chart 9)**  
Based on 70 Incidents

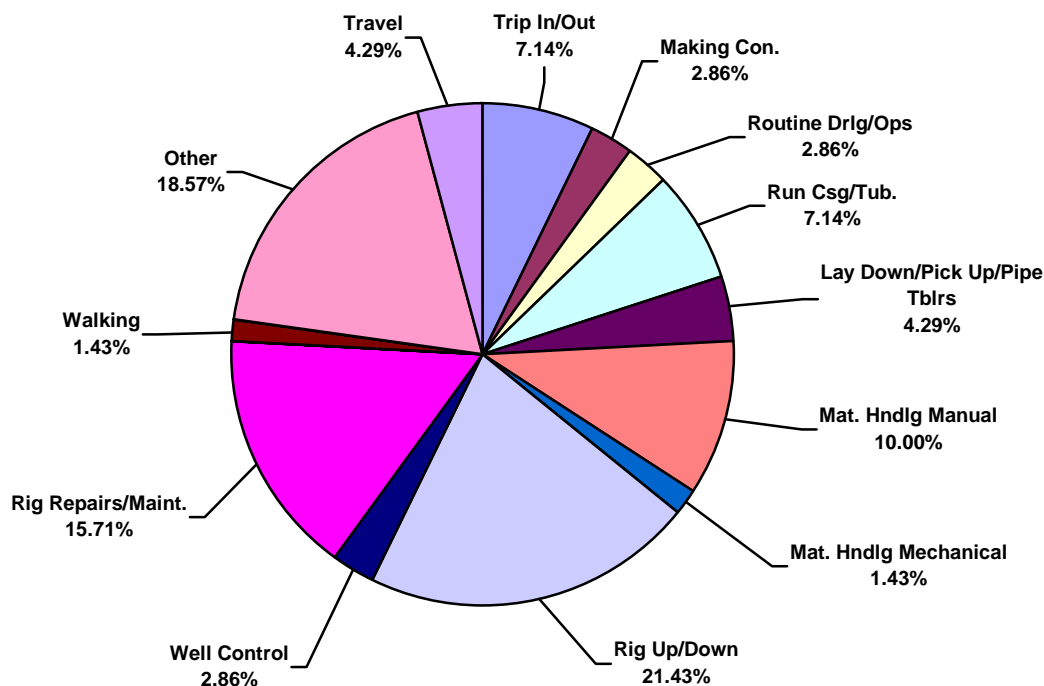


**Central/South America Land Total Recordable Incidents by Equipment (Chart 10)**  
Based on 274 Incidents

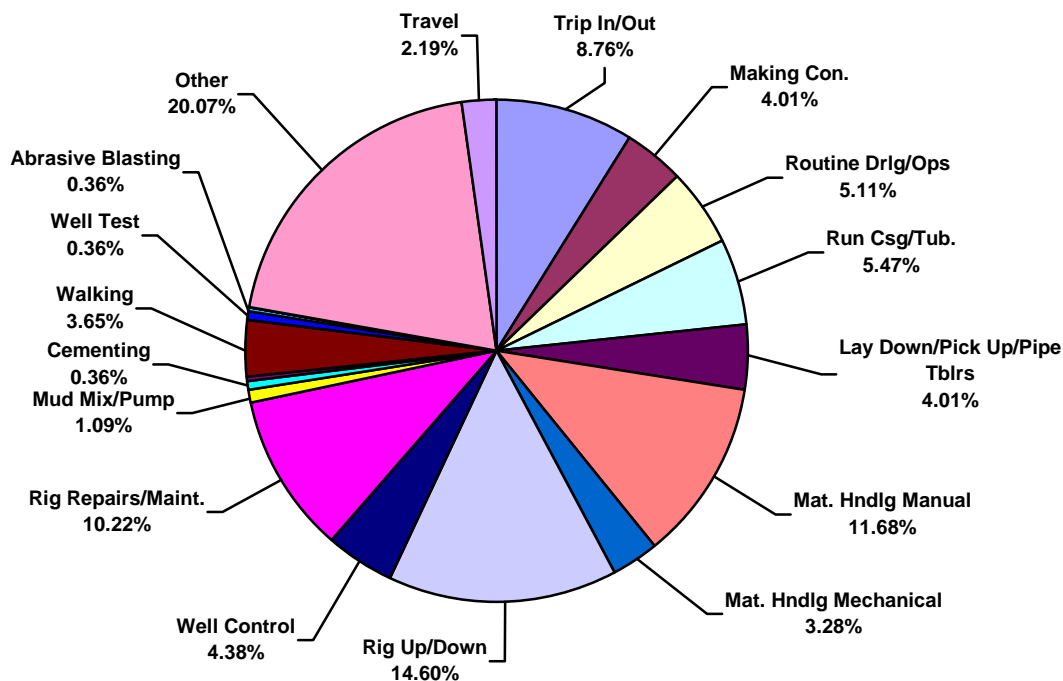




**Central/South America Land Total Lost Time Incidents by Operation (Chart 11)**  
Based on 70 Incidents

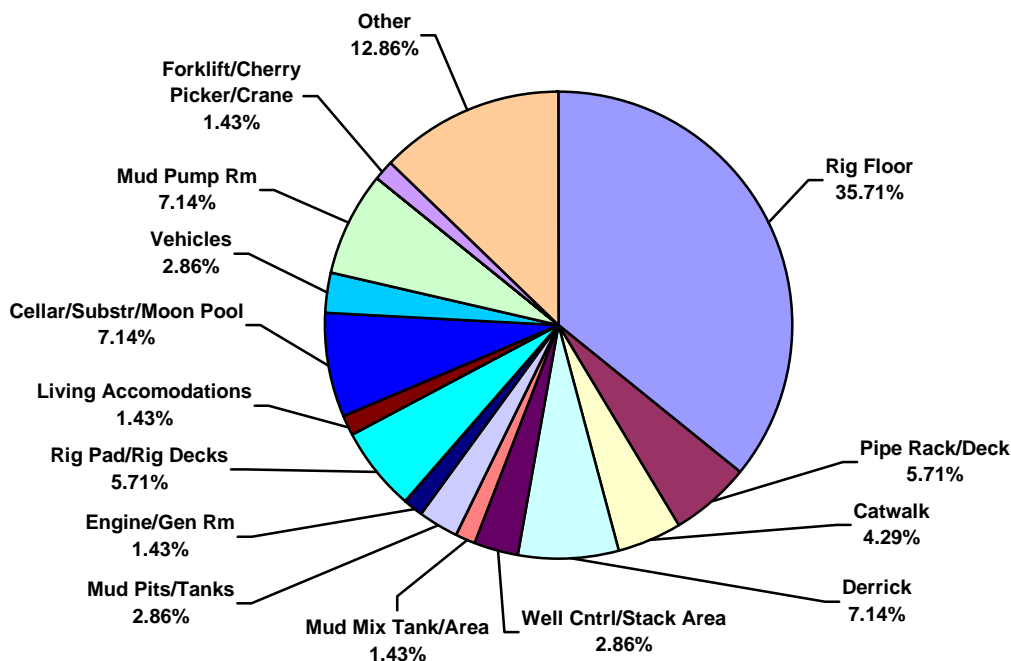


**Central/South America Land Total Recordable Incidents by Operation (Chart 12)**  
Based on 274 Incidents

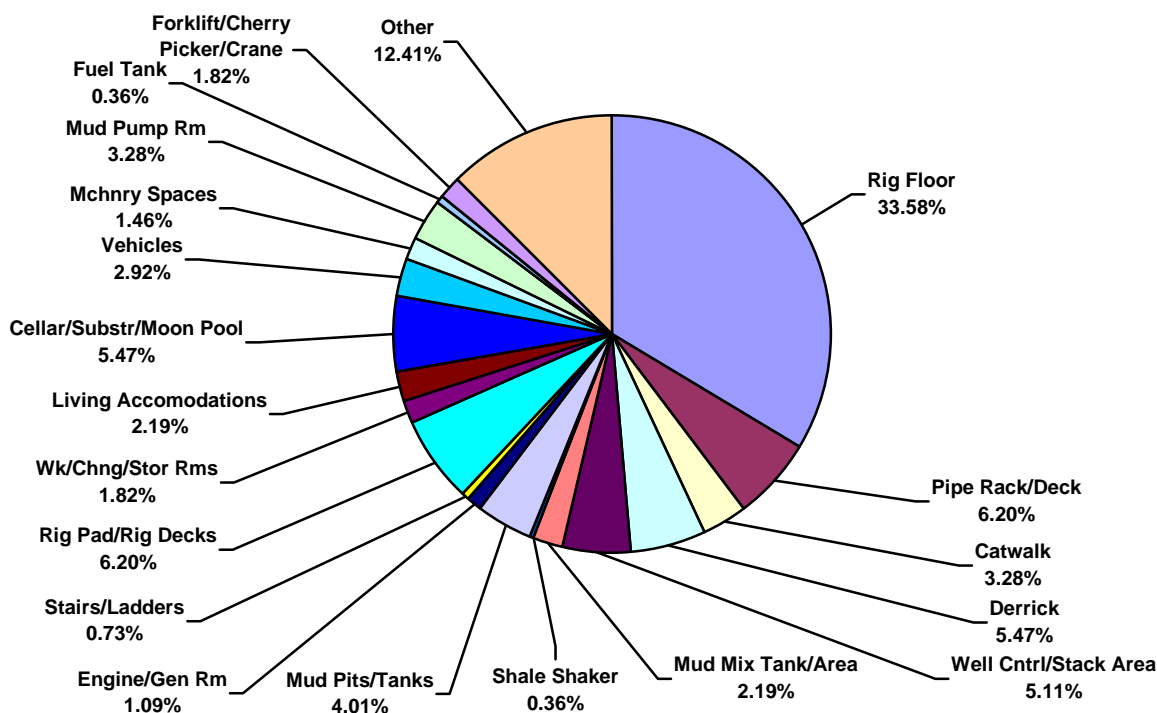




**Central/South America Land Total Lost Time Incidents by Location (Chart 13)**  
Based on 70 Incidents

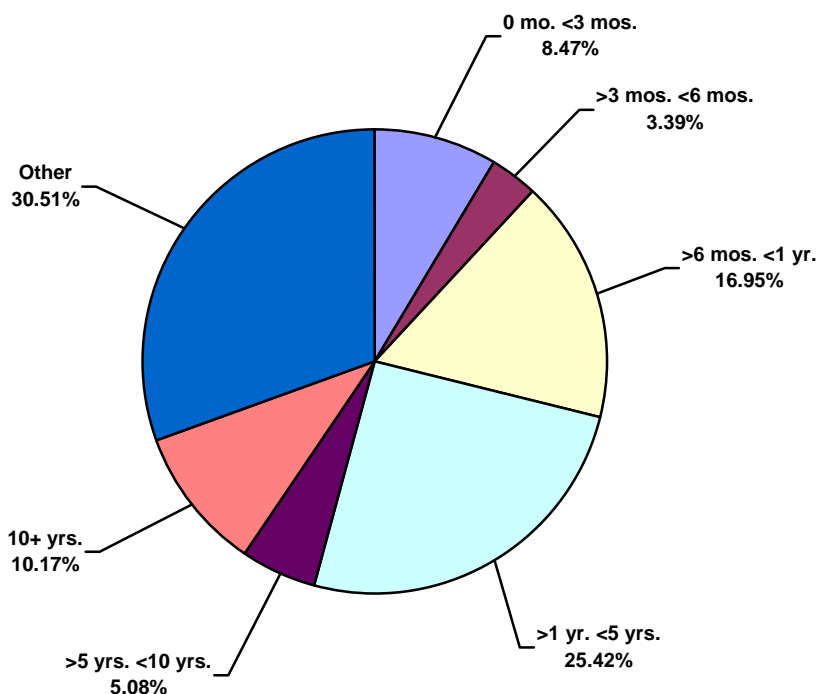


**Central/South America Land Total Recordable Incidents by Location (Chart 14)**  
Based on 274 Incidents

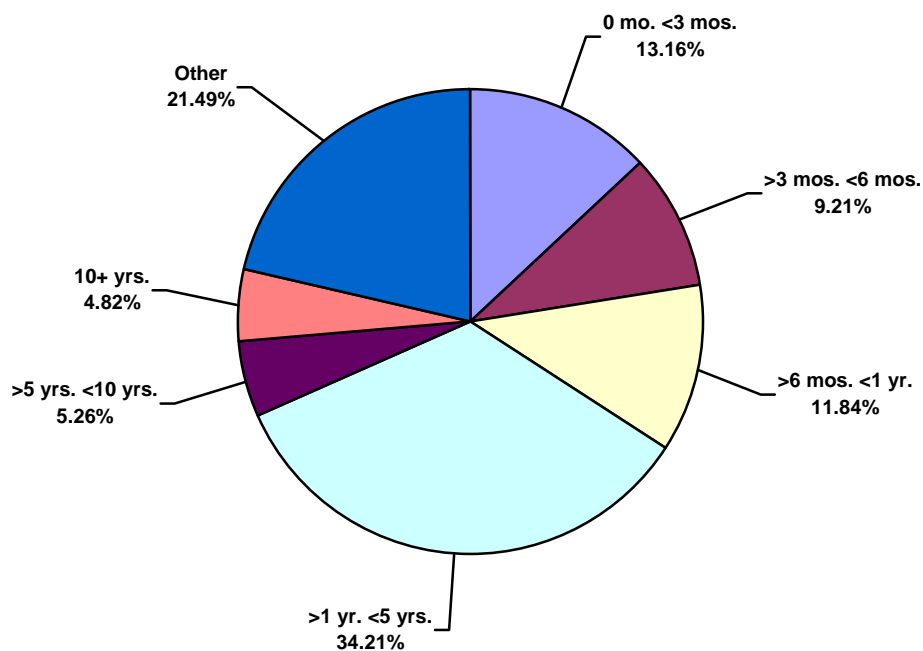




**Central/South America Land Total Lost Time Incidents by Time in Service (Chart 15)**  
Based on 59 Incidents

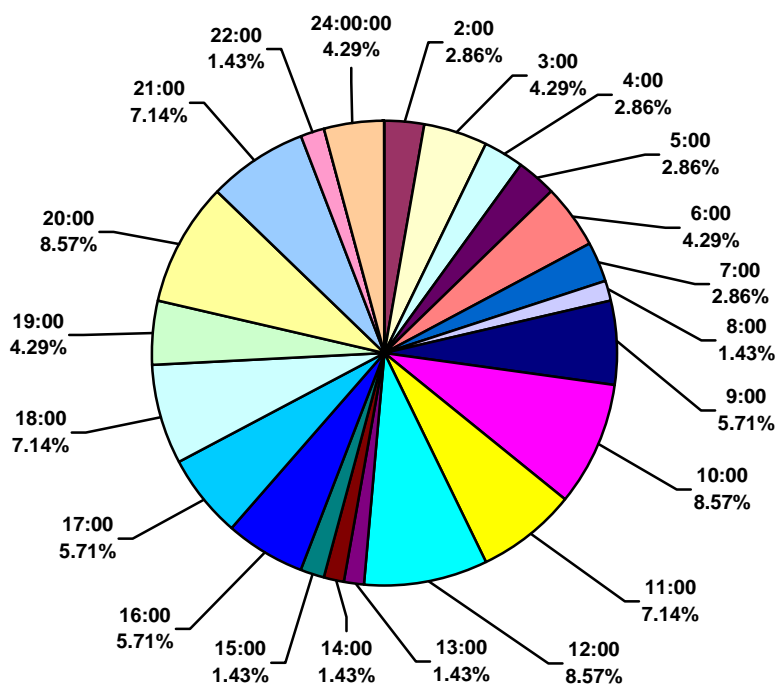


**Central/South America Land Total Recordable Incidents by Time in Service (Chart 16)**  
Based on 228 Incidents





**Central/South America Land Total Lost Time Incidents by Time of Day (Chart 17)**  
Based on 70 Incidents



**Central/South America Land Total Recordable Incidents by Time of Day (Chart 18)**  
Based on 273 Incidents

