



# IADC ASP PROGRAM

2006



## Summary of Occupational Incidents (Canada Water Totals)



# Table of Contents

(Table of Contents is Hyperlinked, Just click on Topic & go)

IADC 2006 CANADA WATER TOTALS (TABLE 1).....	3
<i>Canada Water Total Incidence Rates vs Man-hours (Figure 1) .....</i>	<i>3</i>
IADC 2006 CANADA WATER CHARTS .....	4
<i>Canada Water Total Lost Time Incidents by Month (Chart 1).....</i>	<i>4</i>
<i>Canada Water Total Recordable Incidents by Month (Chart 2) .....</i>	<i>4</i>
<i>Canada Water Total Lost Time Incidents by Occupation (Chart 3).....</i>	<i>5</i>
<i>Canada Water Total Recordable Incidents by Occupation (Chart 4).....</i>	<i>5</i>
<i>Canada Water Total Lost Time Incidents by Body Part (Chart 5).....</i>	<i>6</i>
<i>Canada Water Total Recordable Incidents by Body Part (Chart 6) .....</i>	<i>6</i>
<i>Canada Water Total Lost Time Incidents by Incident Type (Chart 7) .....</i>	<i>7</i>
<i>Canada Water Total Recordable Incidents by Incident Type (Chart 8).....</i>	<i>7</i>
<i>Canada Water Total Lost Time Incidents by Equipment (Chart 9).....</i>	<i>8</i>
<i>Canada Water Total Recordable Incidents by Equipment (Chart 10) .....</i>	<i>8</i>
<i>Canada Water Total Lost Time Incidents by Operation (Chart 11).....</i>	<i>9</i>
<i>Canada Water Total Recordable Incidents by Operation (Chart 12) .....</i>	<i>9</i>
<i>Canada Water Total Lost Time Incidents by Location (Chart 13).....</i>	<i>10</i>
<i>Canada Water Total Recordable Incidents by Location (Chart 14).....</i>	<i>10</i>
<i>Canada Water Total Lost Time Incidents by Time in Service (Chart 15) .....</i>	<i>11</i>
<i>Canada Water Total Recordable Incidents by Time in Service (Chart 16).....</i>	<i>11</i>
<i>Canada Water Total Lost Time Incidents by Time of Day (Chart 17).....</i>	<i>12</i>
<i>Canada Water Total Recordable Incidents by Time of Day (Chart 18).....</i>	<i>12</i>



## IADC 2006 Canada Water Totals (Table 1)

	<u>Total</u>
Total Man-hours	<b>1,612,941</b>
Total Medical Treatment Incidents	<b>7</b>
Total Restricted Work Incidents	<b>2</b>
Total Lost Time Incidents	<b>2</b>
Total Fatalities	<b>0</b>
Total Recordables	<b>11</b>
MTO Incidence Rate	<b>0.87</b>
RWC Incidence Rate	<b>0.25</b>
LTI Incidence Rate	<b>0.25</b>
LTI Frequency Rate	<b>1.24</b>
DART Incidence Rate	<b>0.50</b>
DART Frequency Rate	<b>2.48</b>
Recordable Incidence Rate	<b>1.36</b>
Recordable Frequency Rate	<b>6.82</b>

Companies Reporting: Water – 5

Medical Treatment Incidence Rate = MTOs X 200,000

Restricted Work Incidence Rate = RWCs X 200,000

Lost Time Incidence Rate = LTIs + FTLs X 200,000

DART Incidence Rate = LTIs + RWC X 200,000

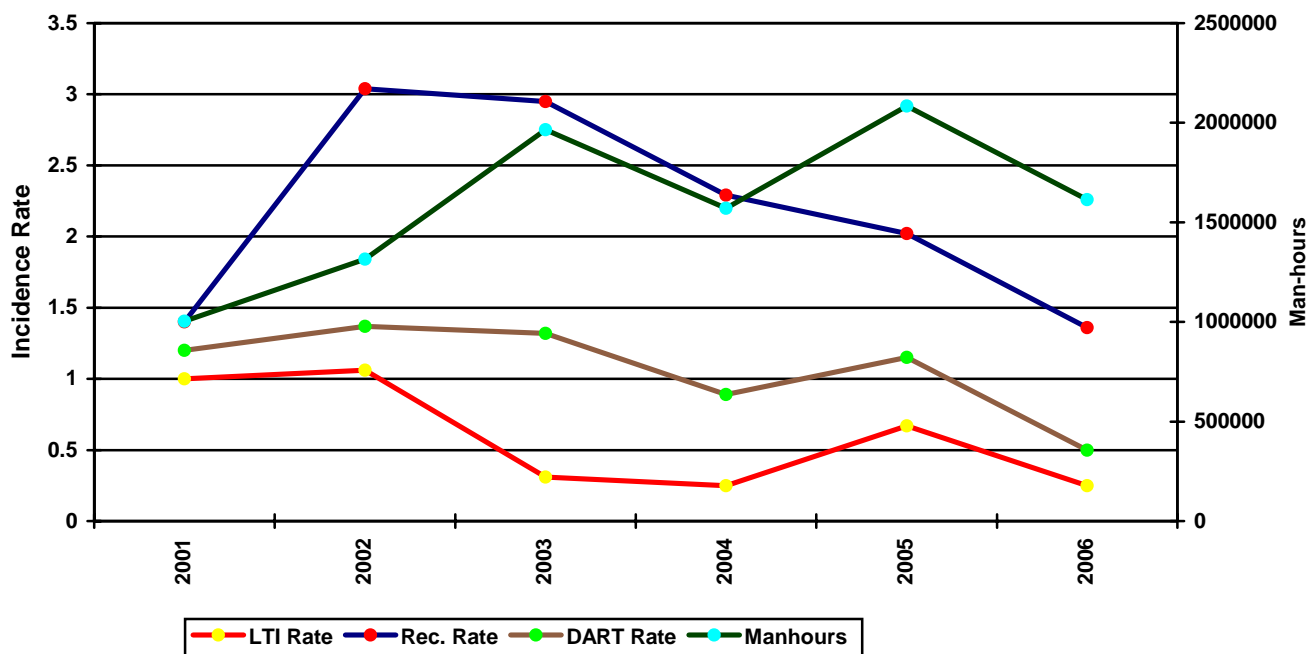
Recordable Incidence Rate = RCRD X 200,000

Lost Time Frequency Rate = LTIs +FTLs X 1,000,000

DART Frequency Rate = LTIs + RWC X 1,000,000

Recordable Frequency Rate = RCRD X 1,000,000

Canada Water Total Incidence Rates vs Man-hours (Figure 1)

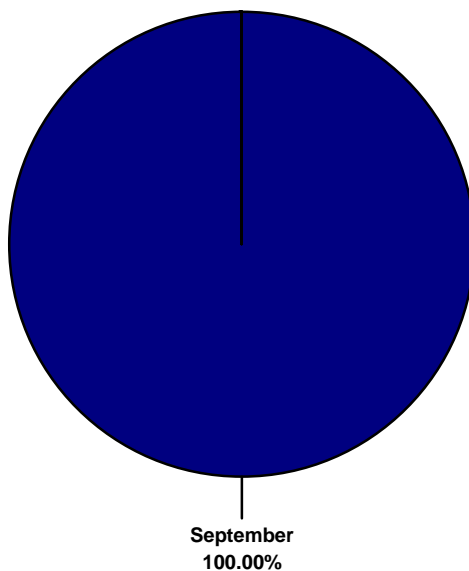




## IADC 2006 Canada Water Charts

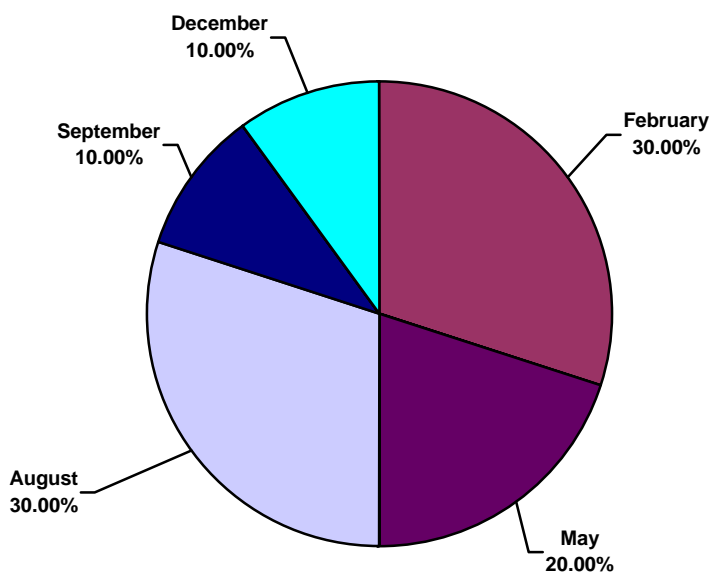
### Canada Water Total Lost Time Incidents by Month (Chart 1)

Based on 1 Incidents



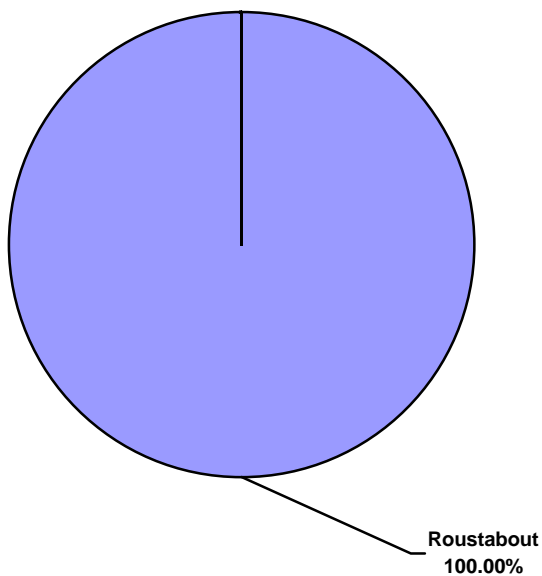
### Canada Water Total Recordable Incidents by Month (Chart 2)

Based on 10 Incidents

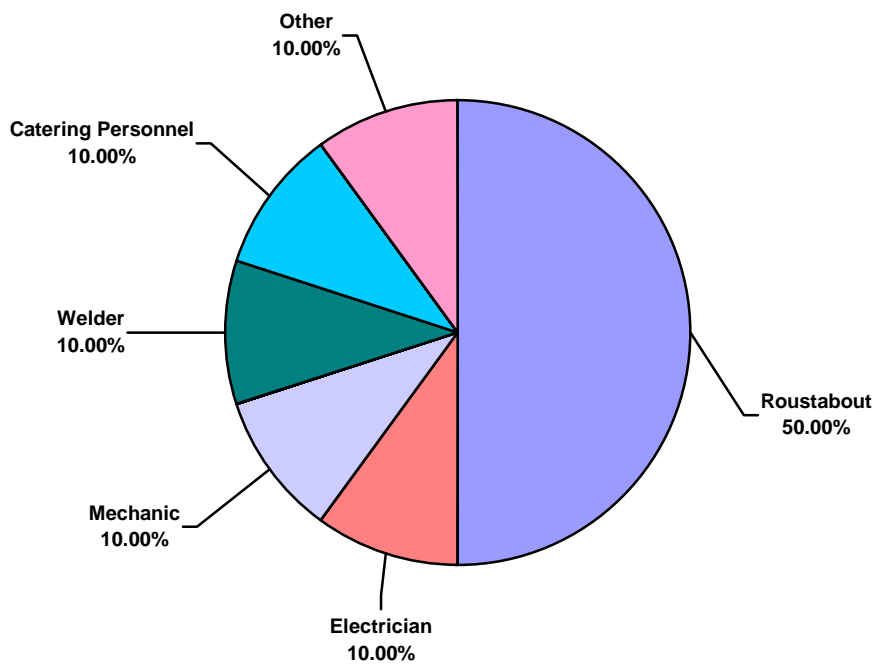




**Canada Water Total Lost Time Incidents by Occupation (Chart 3)**  
Based on 1 Incidents

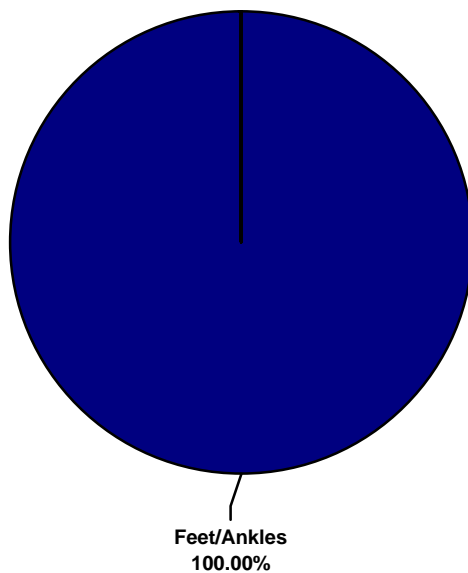


**Canada Water Total Recordable Incidents by Occupation (Chart 4)**  
Based 10 on Incidents

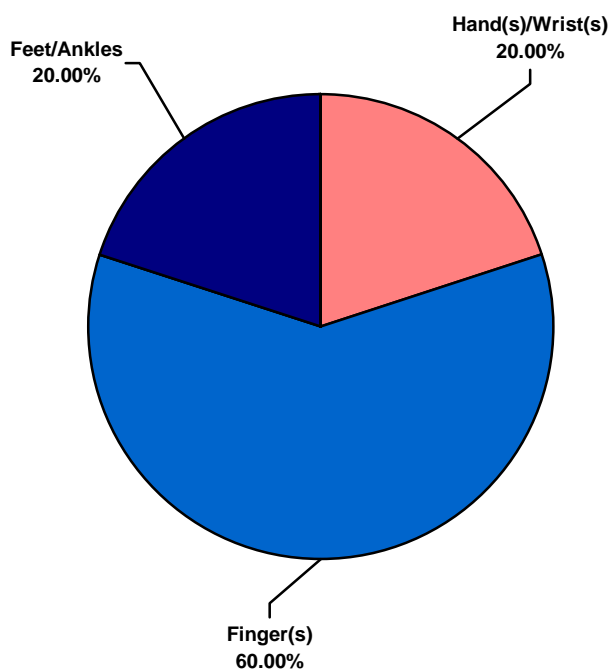




**Canada Water Total Lost Time Incidents by Body Part (Chart 5)**  
Based on 1 Incidents

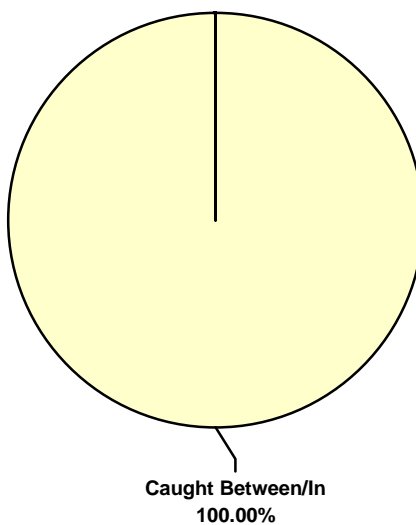


**Canada Water Total Recordable Incidents by Body Part (Chart 6)**  
Based on 10 Incidents

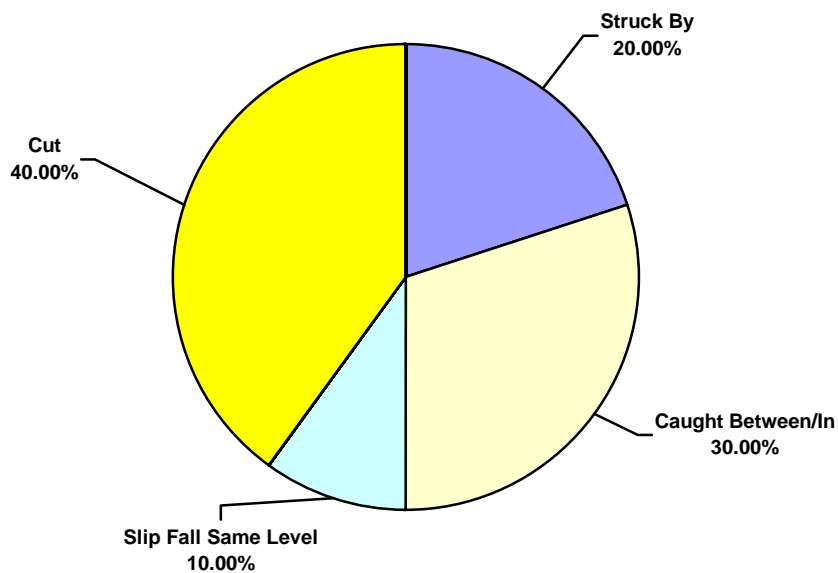




**Canada Water Total Lost Time Incidents by Incident Type (Chart 7)**  
Based on 1 Incidents

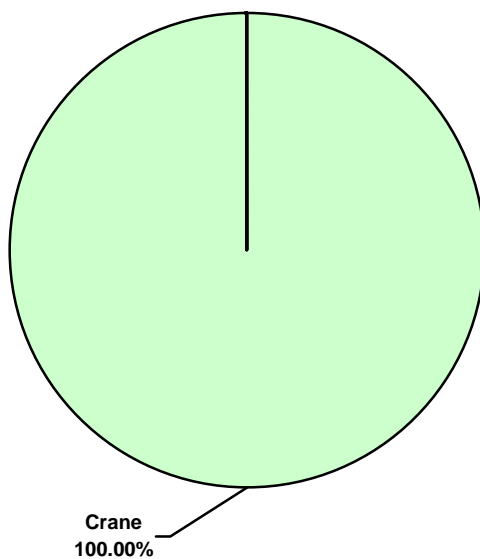


**Canada Water Total Recordable Incidents by Incident Type (Chart 8)**  
Based on 10 Incidents

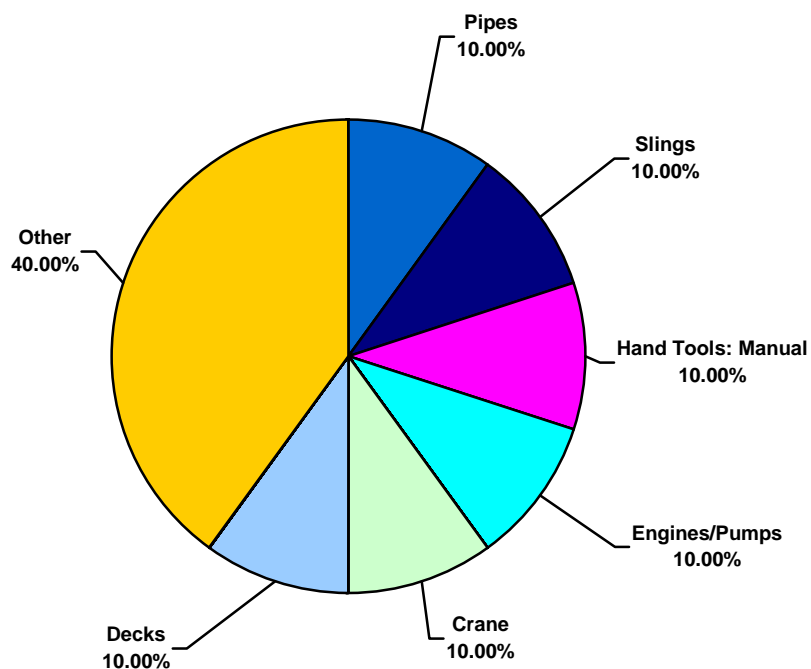




**Canada Water Total Lost Time Incidents by Equipment (Chart 9)**  
Based on 1 Incidents

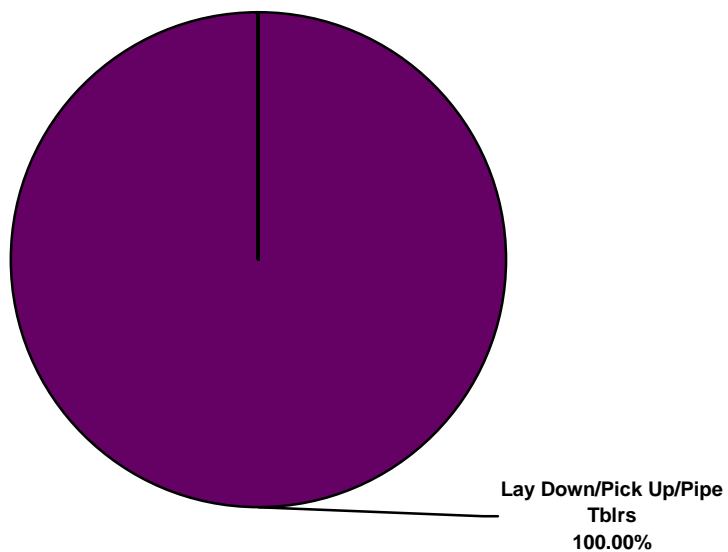


**Canada Water Total Recordable Incidents by Equipment (Chart 10)**  
Based on 10 Incidents

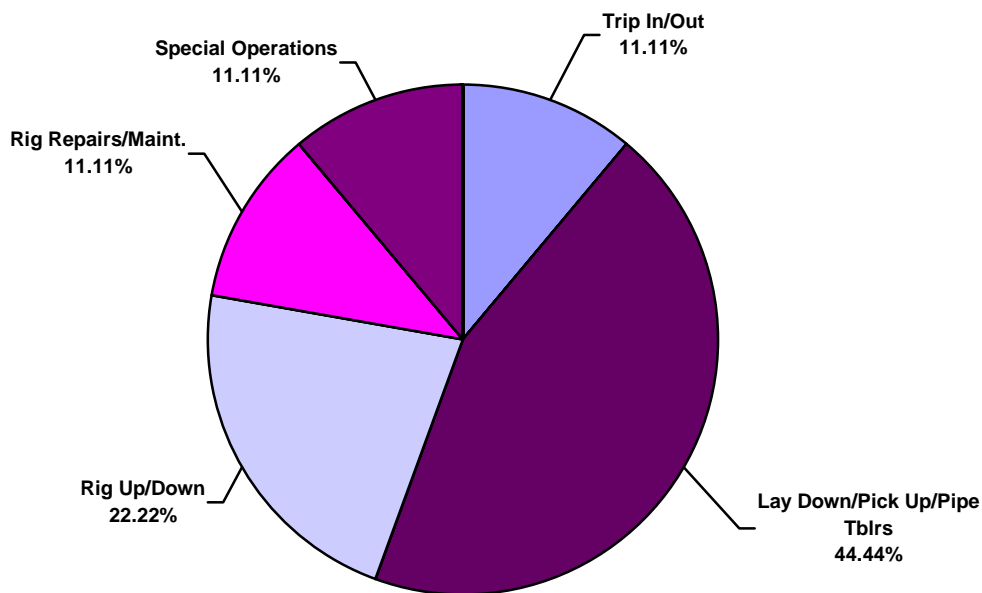




**Canada Water Total Lost Time Incidents by Operation (Chart 11)**  
Based on 1 Incidents

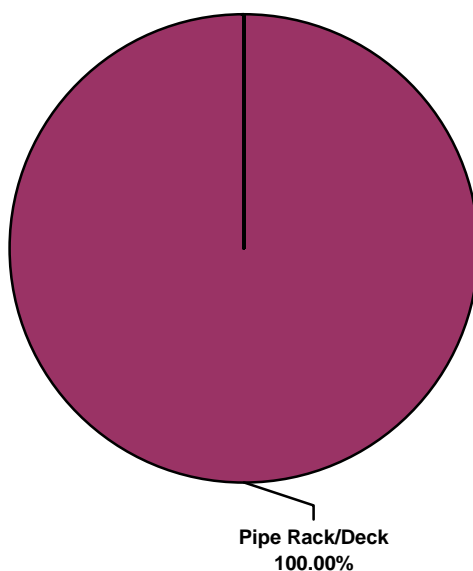


**Canada Water Total Recordable Incidents by Operation (Chart 12)**  
Based on 9 Incidents

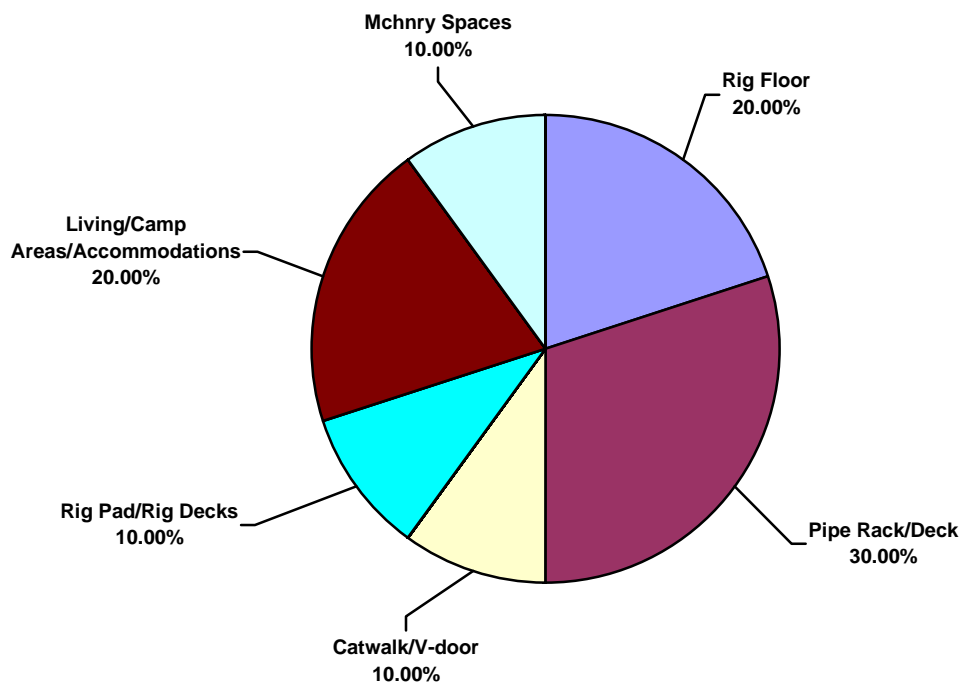




**Canada Water Total Lost Time Incidents by Location (Chart 13)**  
Based on 1 Incidents

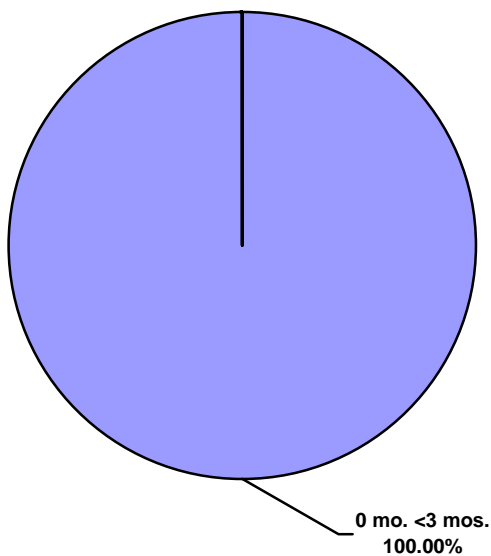


**Canada Water Total Recordable Incidents by Location (Chart 14)**  
Based on 10 Incidents

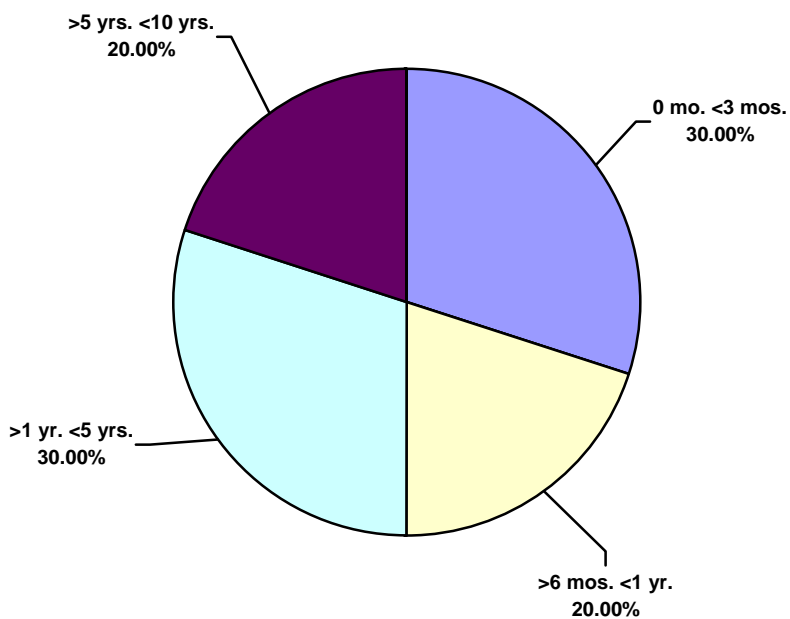




**Canada Water Total Lost Time Incidents by Time in Service (Chart 15)**  
Based on 1 Incidents

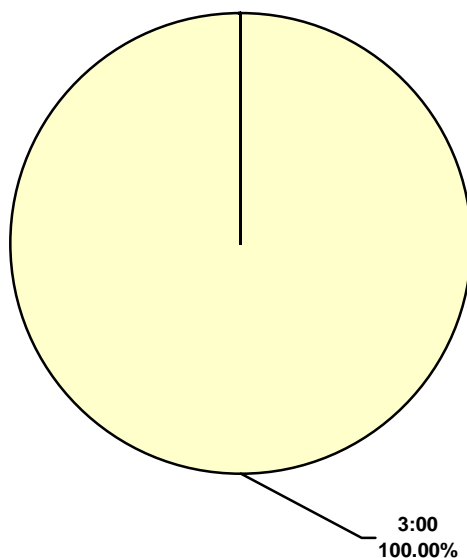


**Canada Water Total Recordable Incidents by Time in Service (Chart 16)**  
Based on 10 Incidents





**Canada Water Total Lost Time Incidents by Time of Day (Chart 17)**  
Based on 1 Incidents



**Canada Water Total Recordable Incidents by Time of Day (Chart 18)**  
Based on 10 Incidents

