



IADC ASP PROGRAM

2006



Summary of Occupational Incidents (Canada Land Totals)



Table of Contents

(Table of Contents is Hyperlinked, Just click on Topic & go)

IADC 2006 CANADA LAND TOTALS (TABLE 1).....	3
<i>Canada Land Total Incidence Rates vs Man-hours (Figure 1)</i>	3
IADC 2006 CANADA LAND CHARTS	4
<i>Canada Land Total Lost Time Incidents by Month (Chart 1)</i>	4
<i>Canada Land Total Recordable Incidents by Month (Chart 2)</i>	4
<i>Canada Land Total Lost Time Incidents by Occupation (Chart 3)</i>	5
<i>Canada Land Total Recordable Incidents by Occupation (Chart 4)</i>	5
<i>Canada Land Total Lost Time Incidents by Body Part (Chart 5)</i>	6
<i>Canada Land Total Recordable Incidents by Body Part (Chart 6)</i>	6
<i>Canada Land Total Lost Time Incidents by Incident Type (Chart 7)</i>	7
<i>Canada Land Total Recordable Incidents by Incident Type (Chart 8)</i>	7
<i>Canada Land Total Lost Time Incidents by Equipment (Chart 9)</i>	8
<i>Canada Land Total Recordable Incidents by Equipment (Chart 10)</i>	8
<i>Canada Land Total Lost Time Incidents by Operation (Chart 11)</i>	9
<i>Canada Land Total Recordable Incidents by Operation (Chart 12)</i>	9
<i>Canada Land Total Lost Time Incidents by Location (Chart 13)</i>	10
<i>Canada Land Total Recordable Incidents by Location (Chart 14)</i>	10
<i>Canada Land Total Lost Time Incidents by Time in Service (Chart 15)</i>	11
<i>Canada Land Total Recordable Incidents by Time in Service (Chart 16)</i>	11
<i>Canada Land Total Lost Time Incidents by Time of Day (Chart 17)</i>	12
<i>Canada Land Total Recordable Incidents by Time of Day (Chart 18)</i>	12



IADC 2006 Canada Land Totals (Table 1)

	<u>Total</u>
Total Manhours	3,698,969
Total Medical Treatment Incidents	36
Total Restricted Work Incidents	12
Total Lost Time Incidents	19
Total Fatalities	0
Total Recordables	67
MTO Incidence Rate	1.95
RWC Incidence Rate	0.65
LTI Incidence Rate	1.03
LTI Frequency Rate	5.14
DART Incidence Rate	1.68
DART Frequency Rate	8.38
Recordable Incidence Rate	3.62
Recordable Frequency Rate	18.11

Companies Reporting: Land – 2

Medical Treatment Incidence Rate = MTOs X 200,000

Restricted Work Incidence Rate = RWCs X 200,000

Lost Time Incidence Rate = LTIs + FTLs X 200,000

DART Incidence Rate = LTIs + RWC X 200,000

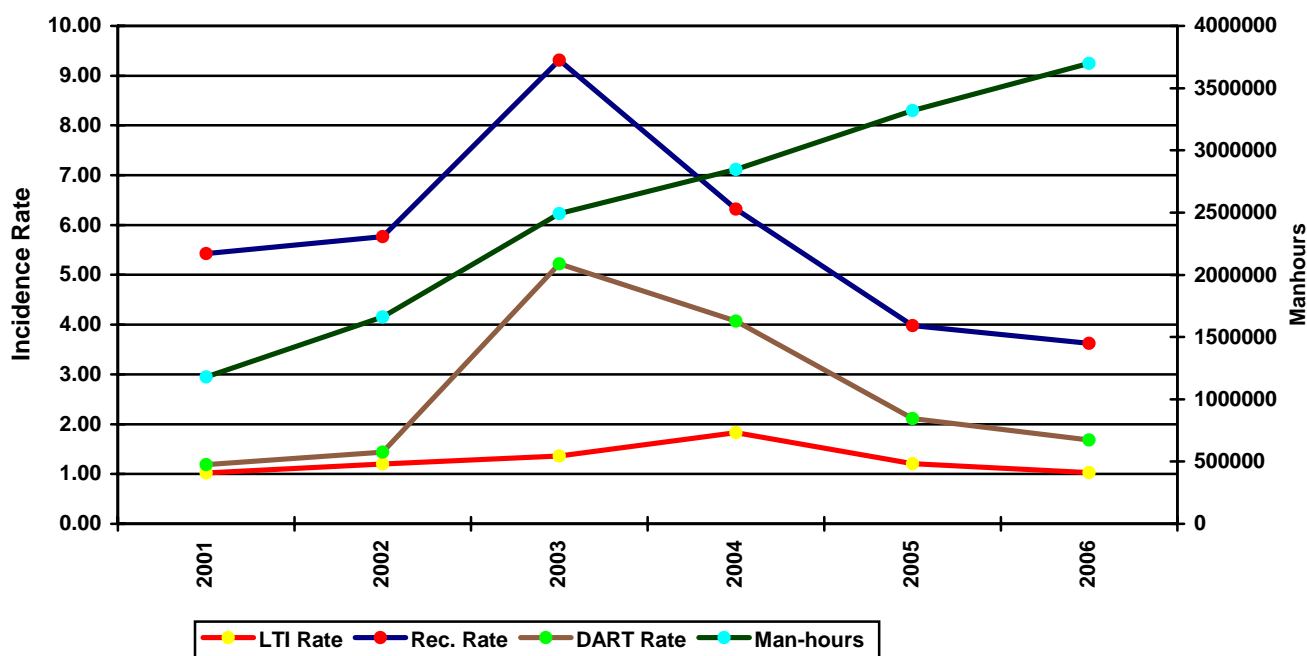
Recordable Incidence Rate = RCRD X 200,000

Lost Time Frequency Rate = LTIs +FTLs X 1,000,000

DART Frequency Rate = LTIs + RWC X 1,000,000

Recordable Frequency Rate = RCRD X 1,000,000

Canada Land Total Incidence Rates vs Man-hours (Figure 1)

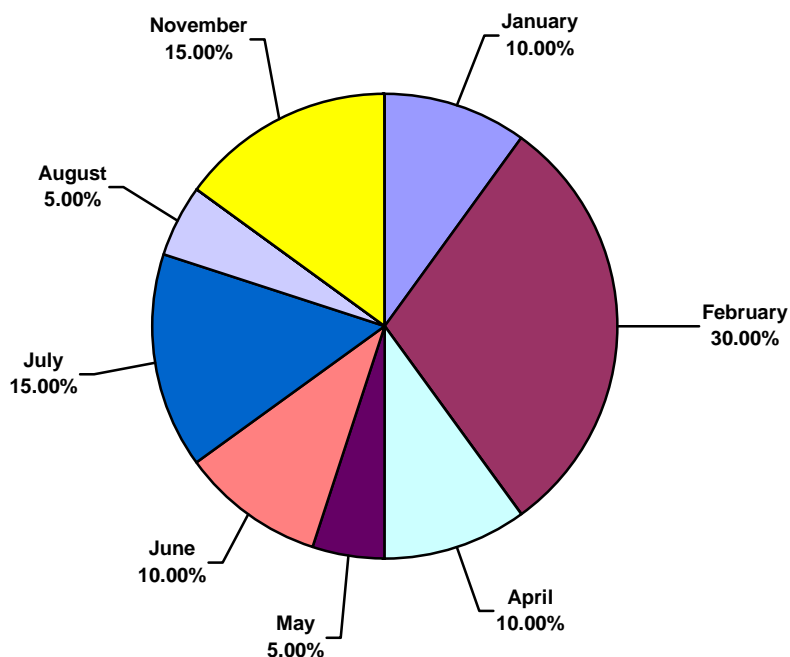




IADC 2006 Canada Land Charts

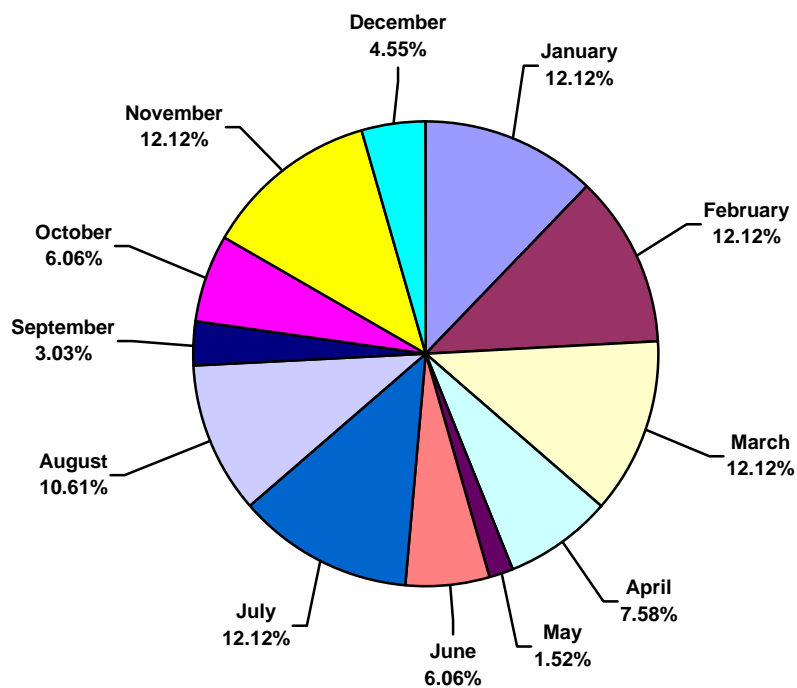
Canada Land Total Lost Time Incidents by Month (Chart 1)

Based on 20 Incidents



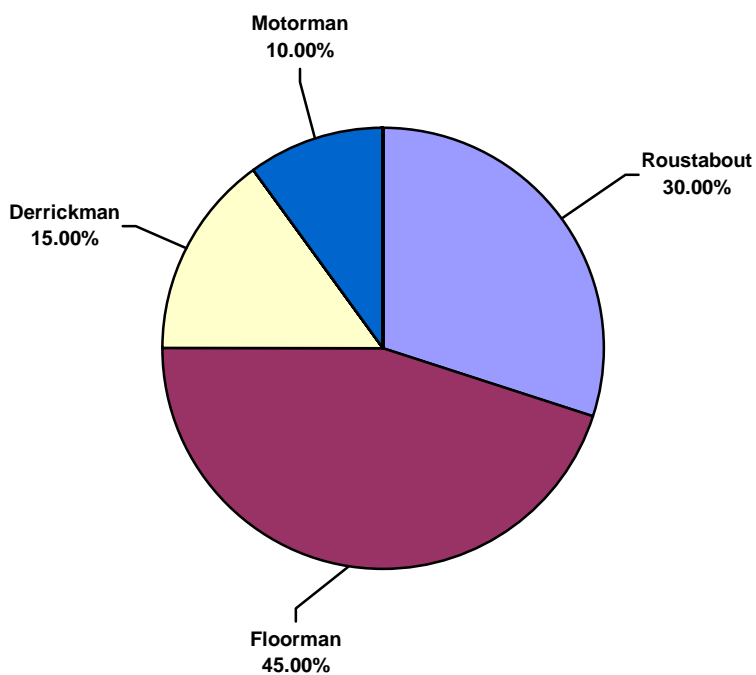
Canada Land Total Recordable Incidents by Month (Chart 2)

Based on 66 Incidents

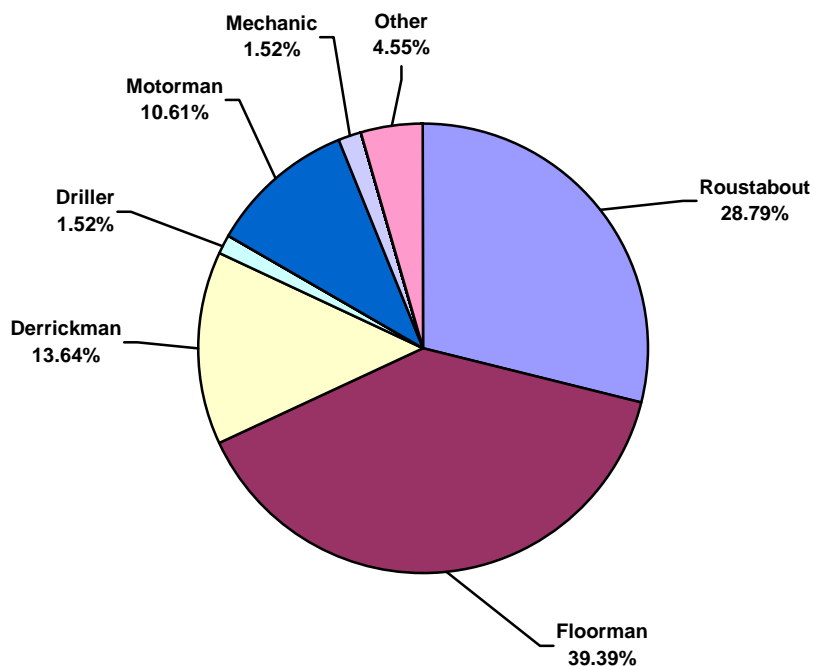




Canada Land Total Lost Time Incidents by Occupation (Chart 3)
Based on 20 Incidents

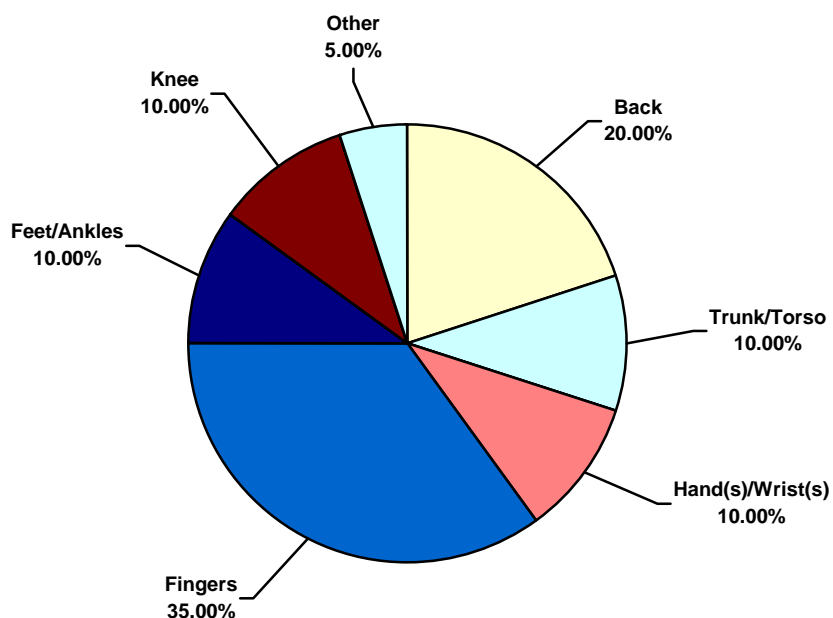


Canada Land Total Recordable Incidents by Occupation (Chart 4)
Based on 66 Incidents

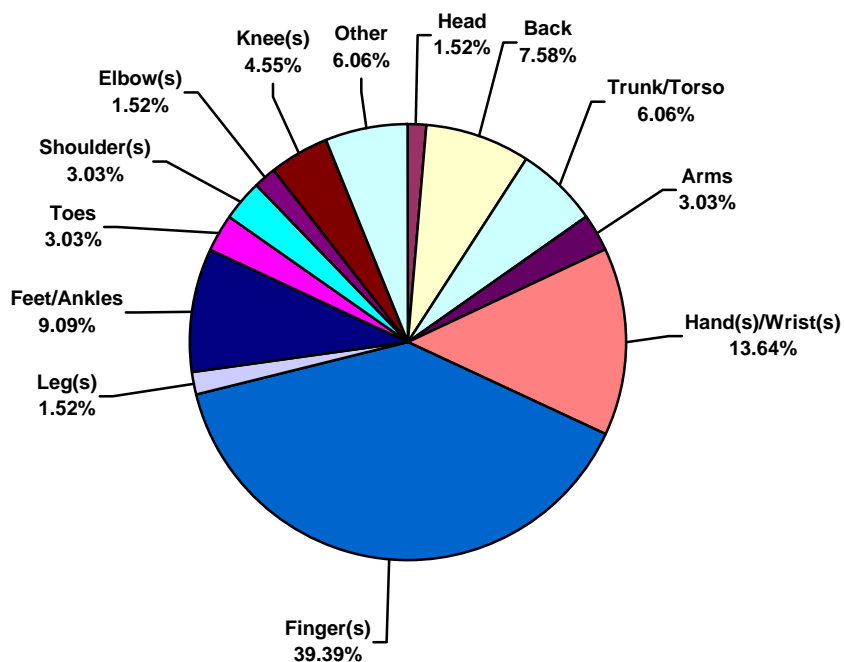




Canada Land Total Lost Time Incidents by Body Part (Chart 5)
Based on 20 Incidents

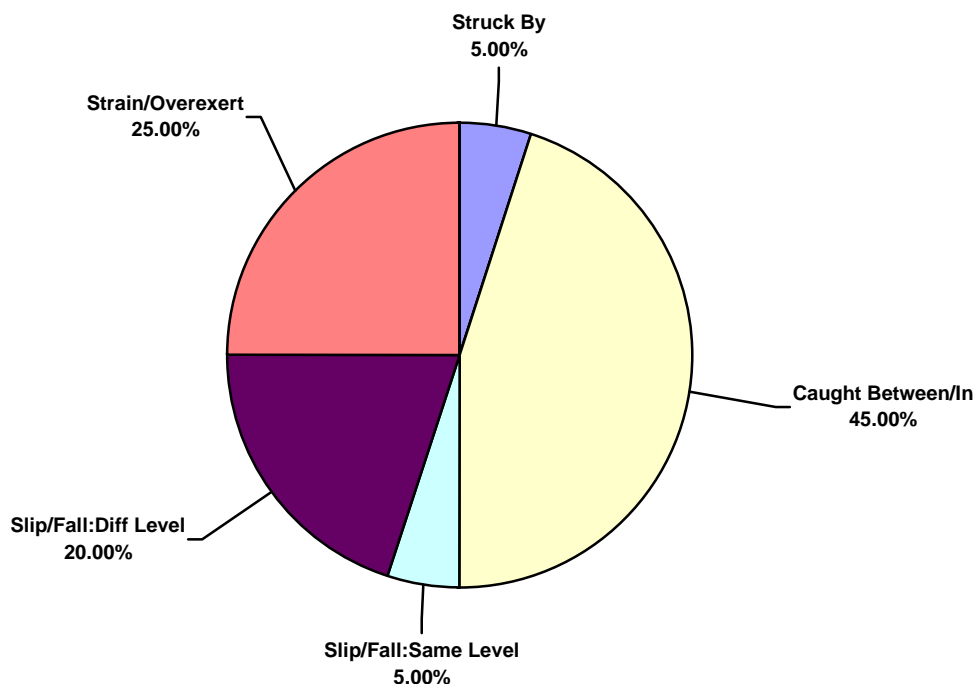


Canada Land Total Recordable Incidents by Body Part (Chart 6)
Based on 66 Incidents

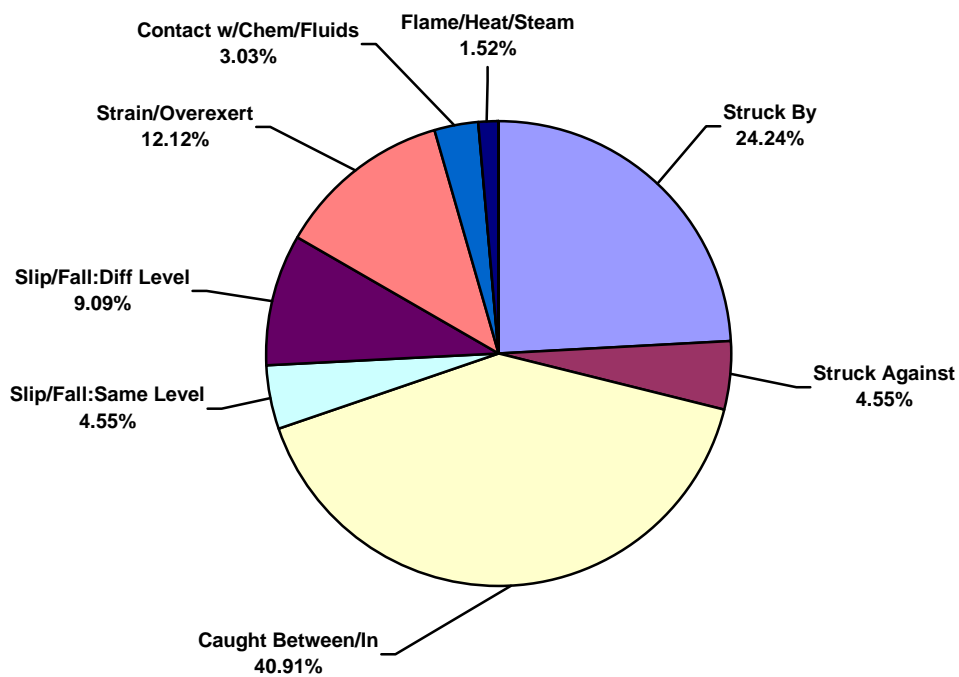




Canada Land Total Lost Time Incidents by Incident Type (Chart 7)
Based on 20 Incidents

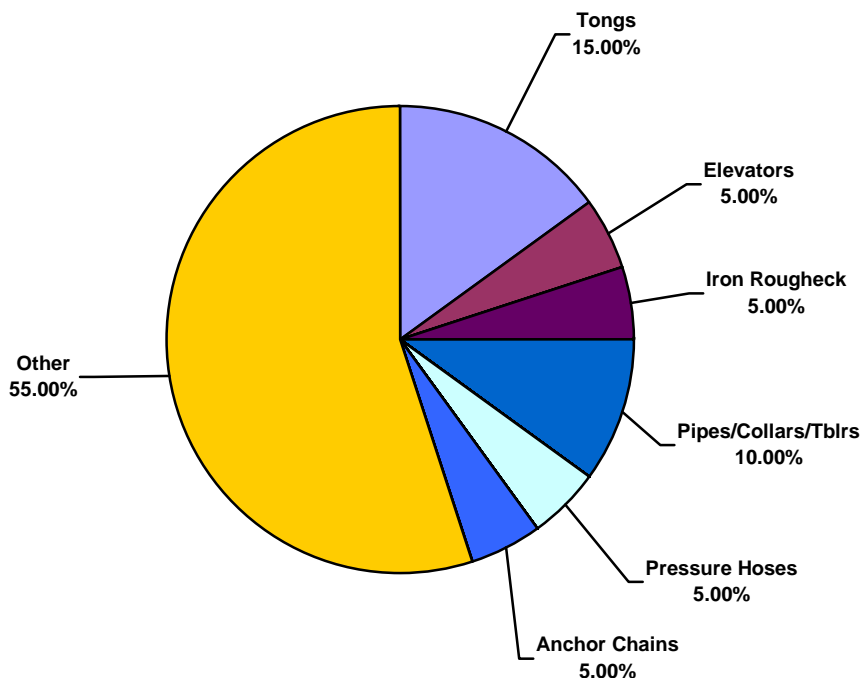


Canada Land Total Recordable Incidents by Incident Type (Chart 8)
Based on 66 Incidents

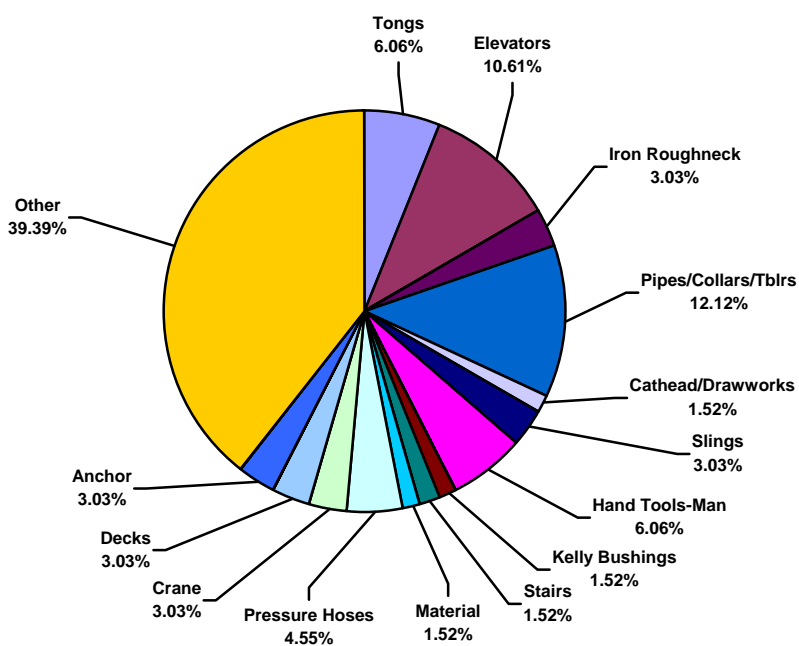




Canada Land Total Lost Time Incidents by Equipment (Chart 9)
Based on 20 Incidents

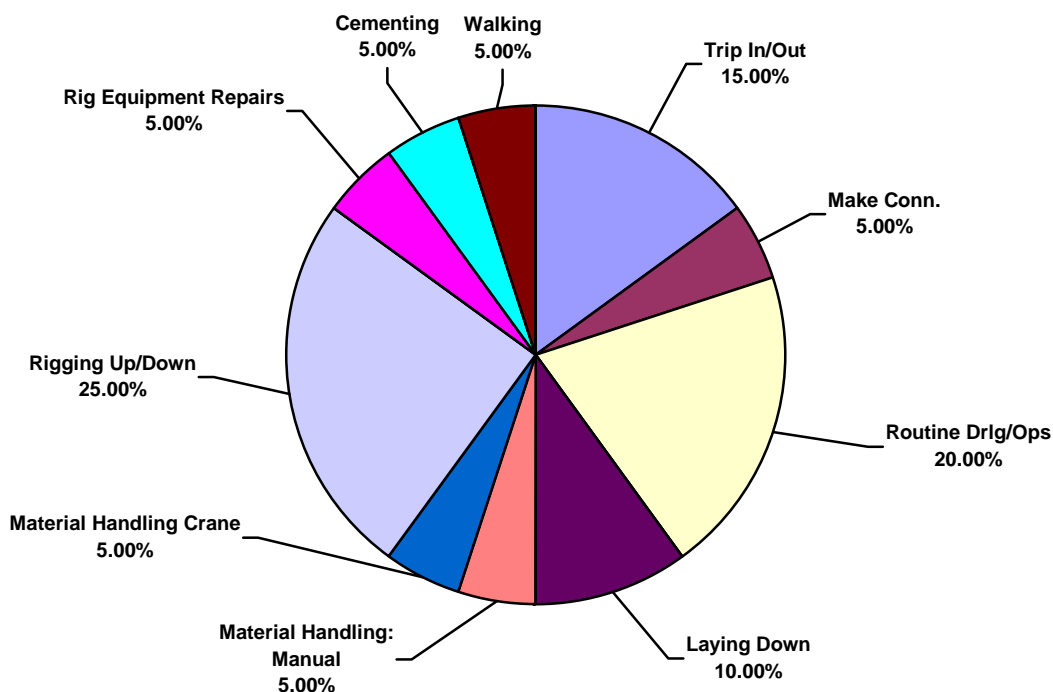


Canada Land Total Recordable Incidents by Equipment (Chart 10)
Based on 66 Incidents

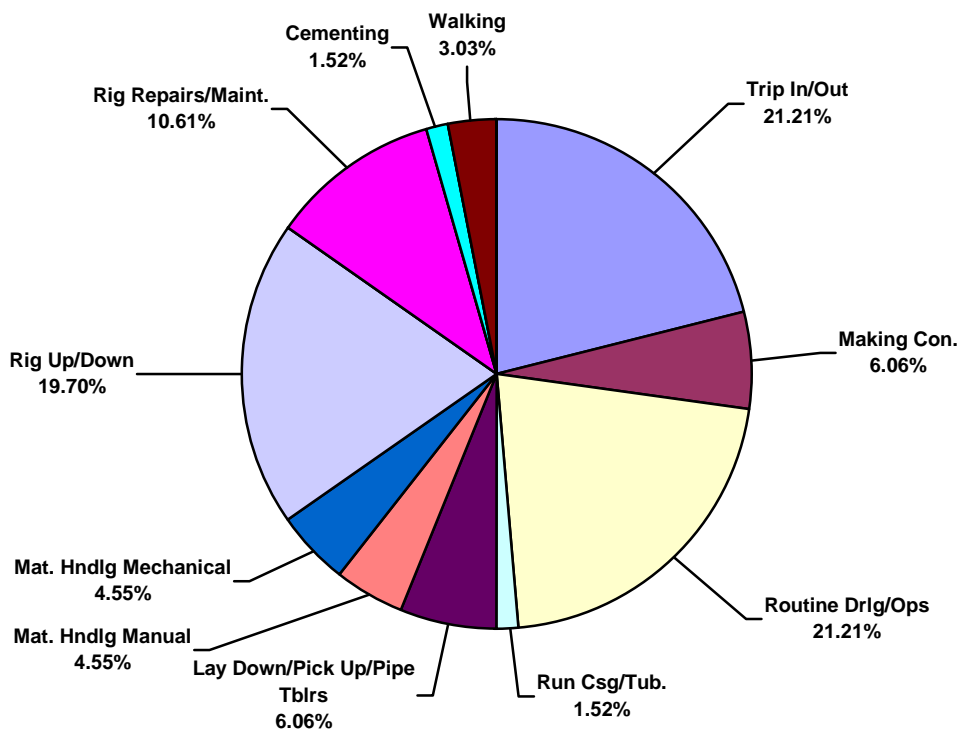




Canada Land Total Lost Time Incidents by Operation (Chart 11)
Based on 20 Incidents

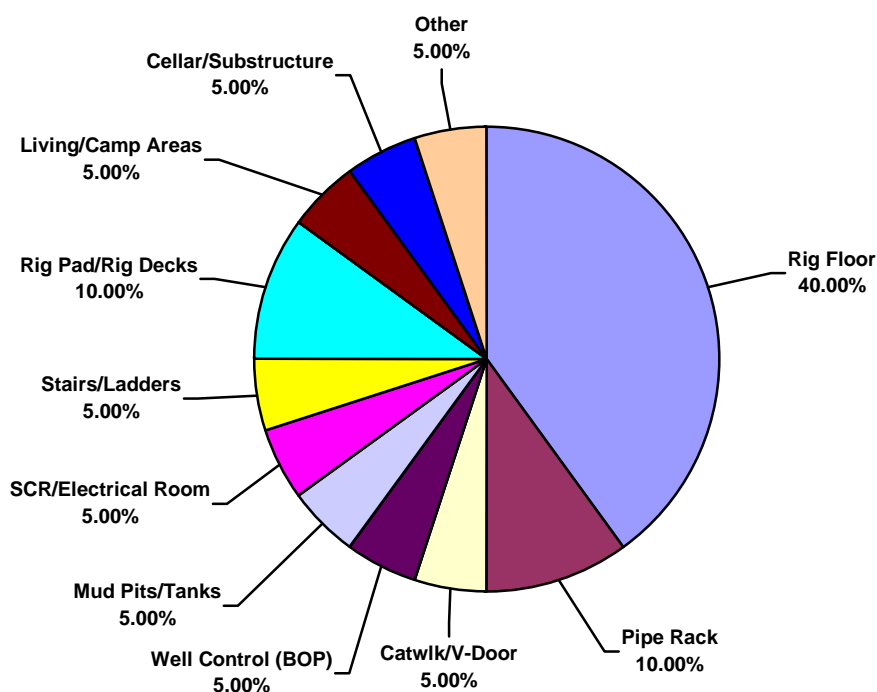


Canada Land Total Recordable Incidents by Operation (Chart 12)
Based on 66 Incidents

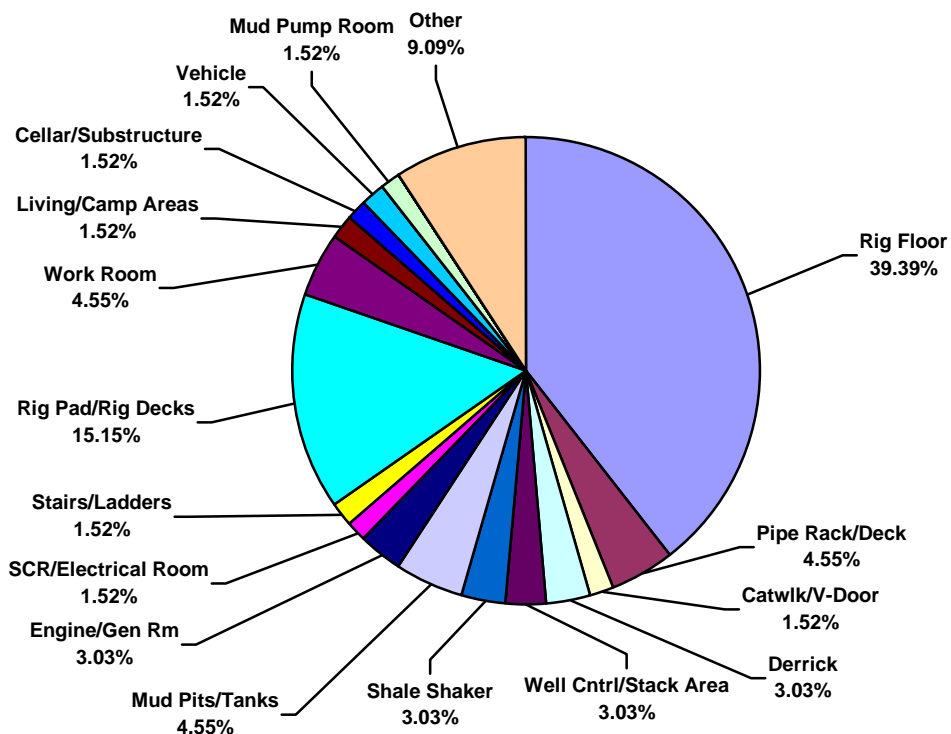




Canada Land Total Lost Time Incidents by Location (Chart 13)
Based on 20 Incidents

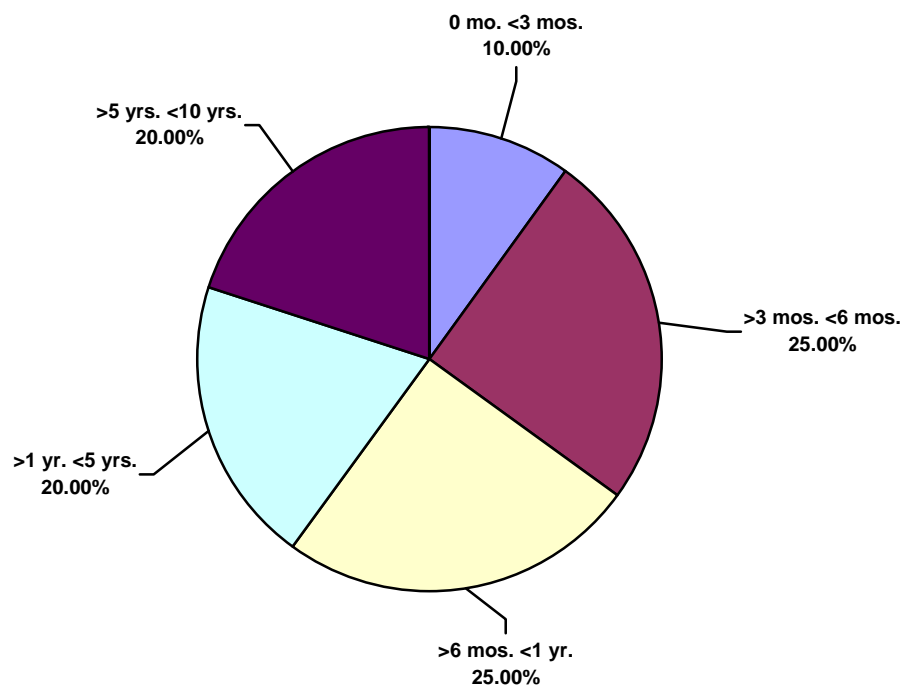


Canada Land Total Recordable Incidents by Location (Chart 14)
Based on 66 Incidents

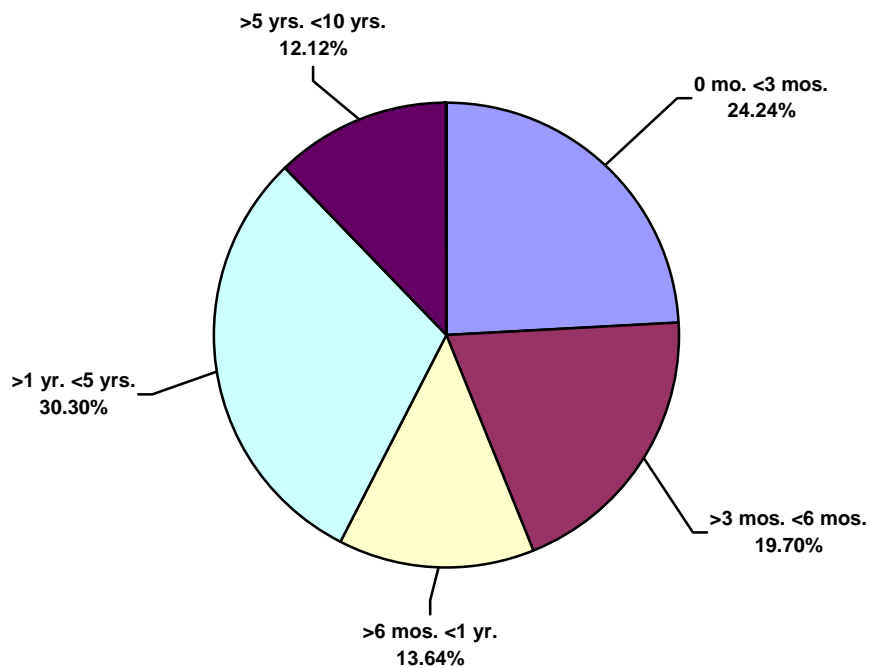




Canada Land Total Lost Time Incidents by Time in Service (Chart 15)
Based on 20 Incidents

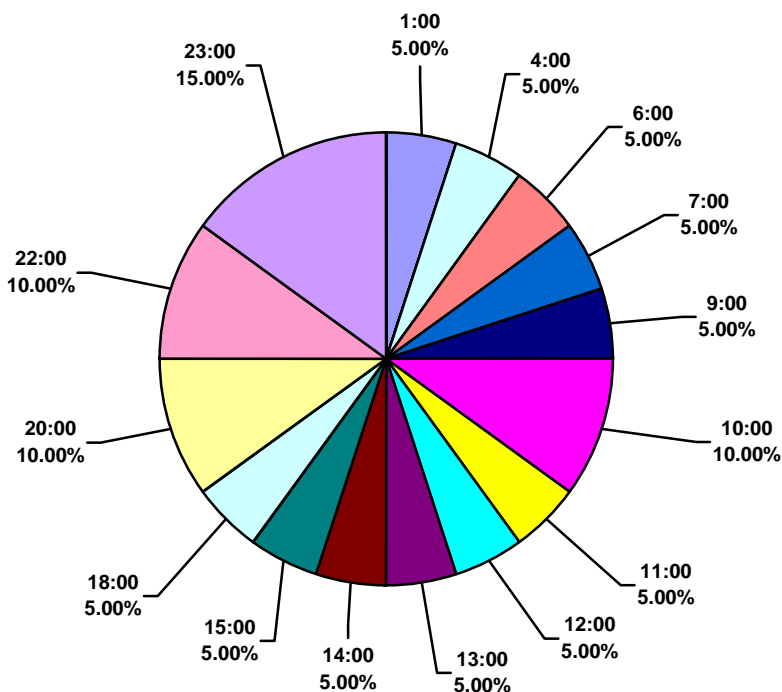


Canada Land Total Recordable Incidents by Time in Service (Chart 16)
Based on 66 Incidents





Canada Land Total Lost Time Incidents by Time of Day (Chart 17)
Based on 20 Incidents



Canada Land Total Recordable Incidents by Time of Day (Chart 18)
Based on 66 Incidents

