



# IADC ASP PROGRAM

2006



## Summary of Occupational Incidents (Asia Pacific Water Totals)



# Table of Contents

(Table of Contents is Hyperlinked, Just click on Topic & go)

IADC 2006 ASIA PACIFIC WATER TOTALS (TABLE 1).....	3
<i>Asia Pacific Water Incidence Rates vs Man-hours (Figure 1)</i> .....	3
IADC 2006 ASIA PACIFIC WATER CHARTS .....	4
<i>Asia Pacific Water Total Lost Time Incidents by Month (Chart 1)</i> .....	4
<i>Asia Pacific Water Total Recordable Incidents by Month (Chart 2)</i> .....	4
<i>Asia Pacific Water Total Lost Time Incidents by Occupation (Chart 3)</i> .....	5
<i>Asia Pacific Water Total Recordable Incidents by Occupation (Chart 4)</i> .....	5
<i>Asia Pacific Water Total Lost Time Incidents by Body Part (Chart 5)</i> .....	6
<i>Asia Pacific Water Total Recordable Incidents by Body Part (Chart 6)</i> .....	6
<i>Asia Pacific Water Total Lost Time Incidents by Incident Type (Chart 7)</i> .....	7
<i>Asia Pacific Water Total Recordable Incidents by Incident Type (Chart 8)</i> .....	7
<i>Asia Pacific Water Total Lost Time Incidents by Equipment (Chart 9)</i> .....	8
<i>Asia Pacific Water Total Recordable Incidents by Equipment (Chart 10)</i> .....	8
<i>Asia Pacific Water Total Lost Time Incidents by Operation (Chart 11)</i> .....	9
<i>Asia Pacific Water Total Recordable Incidents by Operation (Chart 12)</i> .....	9
<i>Asia Pacific Water Total Lost Time Incidents by Location (Chart 13)</i> .....	10
<i>Asia Pacific Water Total Recordable Incidents by Location (Chart 14)</i> .....	10
<i>Asia Pacific Water Total Lost Time Incidents by Time in Service (Chart 15)</i> .....	11
<i>Asia Pacific Water Total Recordable Incidents by Time in Service (Chart 16)</i> .....	11
<i>Asia Pacific Water Total Lost Time Incidents by Time of Day (Chart 17)</i> .....	12
<i>Asia Pacific Water Total Recordable Incidents by Time of Day (Chart 18)</i> .....	12



# IADC 2006 Asia Pacific Water Totals (Table 1)

	<u>Total</u>
Total Manhours	25,832,457
Total Medical Treatment Incidents	44
Total Restricted Work Incidents	37
Total Lost Time Incidents	51
Total Fatalities	1
Total Recordables	133
MTO Incidence Rate	0.34
RWC Incidence Rate	0.29
LTI Incidence Rate	0.40
LTI Frequency Rate	2.01
DART Incidence Rate	0.69
DART Frequency Rate	3.45
Recordable Incidence Rate	1.03
Recordable Frequency Rate	5.15

## Companies Reporting: Water – 23

Medical Treatment Incidence Rate = MTOs X 200,000

Restricted Work Incidence Rate = RWCs X 200,000

Lost Time Incidence Rate = LTIs + FTLs X 200,000

DART Incidence Rate = LTIs + RWC X 200,000

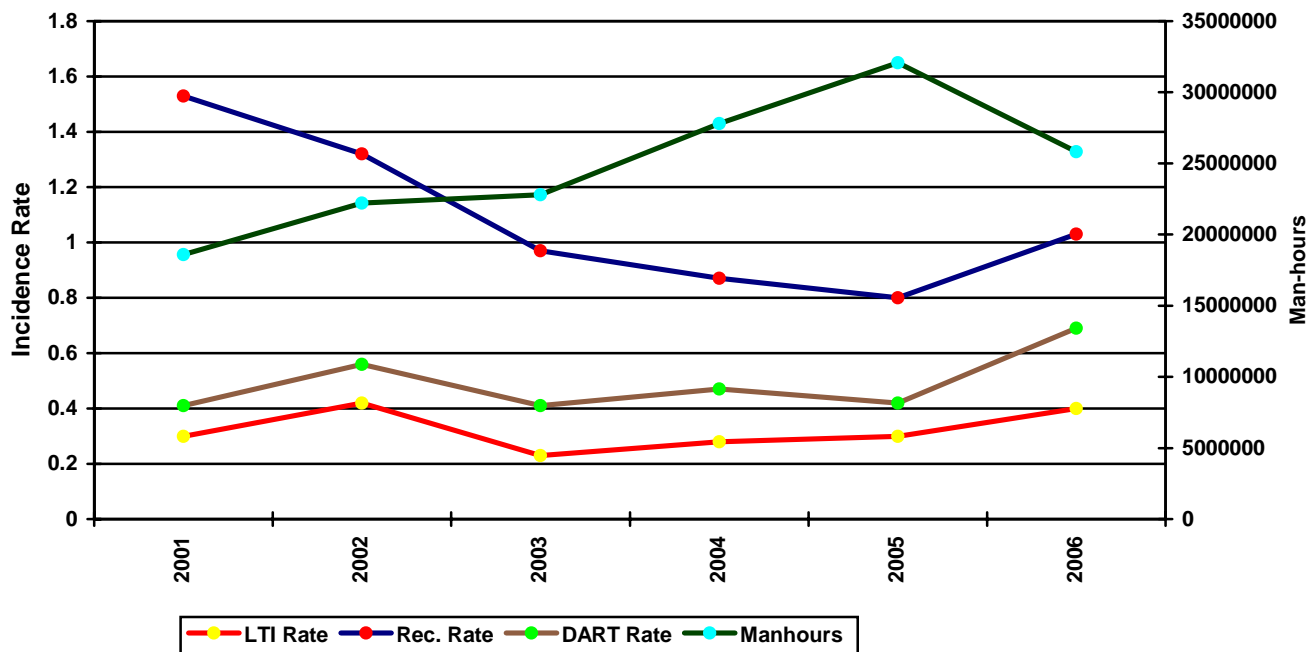
Recordable Incidence Rate = RCRD X 200,000

Lost Time Frequency Rate = LTIs +FTLs X 1,000,000

DART Frequency Rate = LTIs + RWC X 1,000,000

Recordable Frequency Rate = RCRD X 1,000,000

Asia Pacific Water Incidence Rates vs Man-hours (Figure 1)

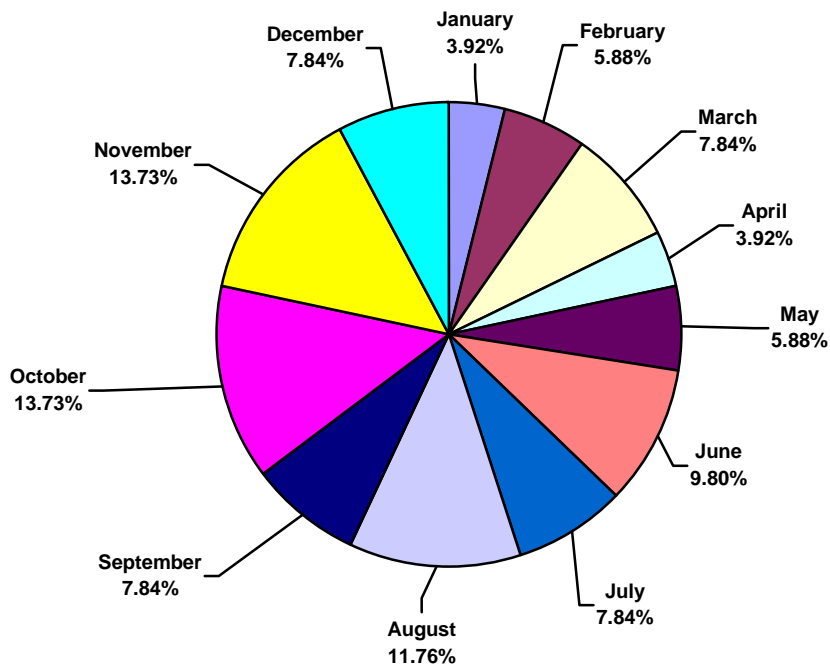




## IADC 2006 Asia Pacific Water Charts

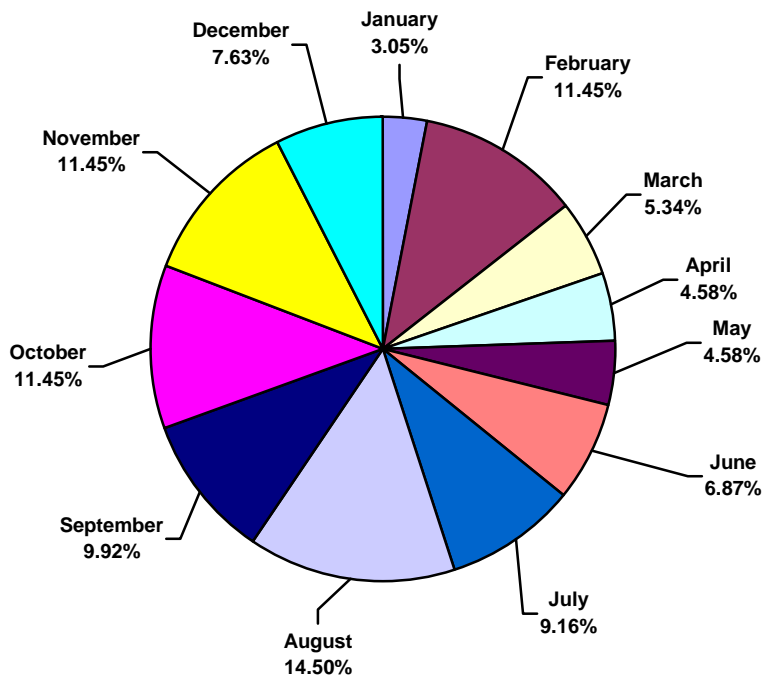
### Asia Pacific Water Total Lost Time Incidents by Month (Chart 1)

Based on 51 Incidents



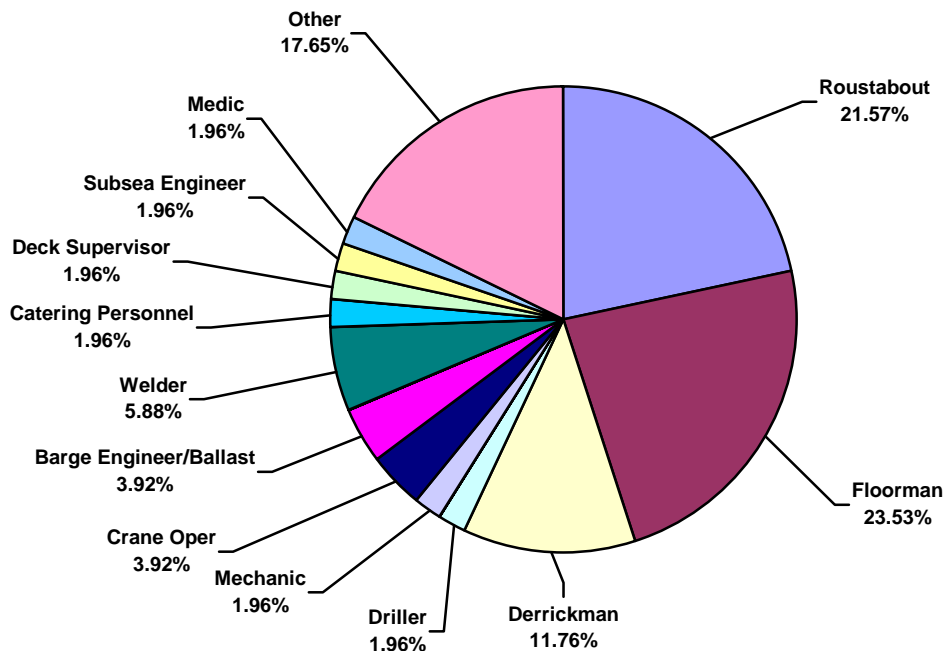
### Asia Pacific Water Total Recordable Incidents by Month (Chart 2)

Based on 131 Incidents

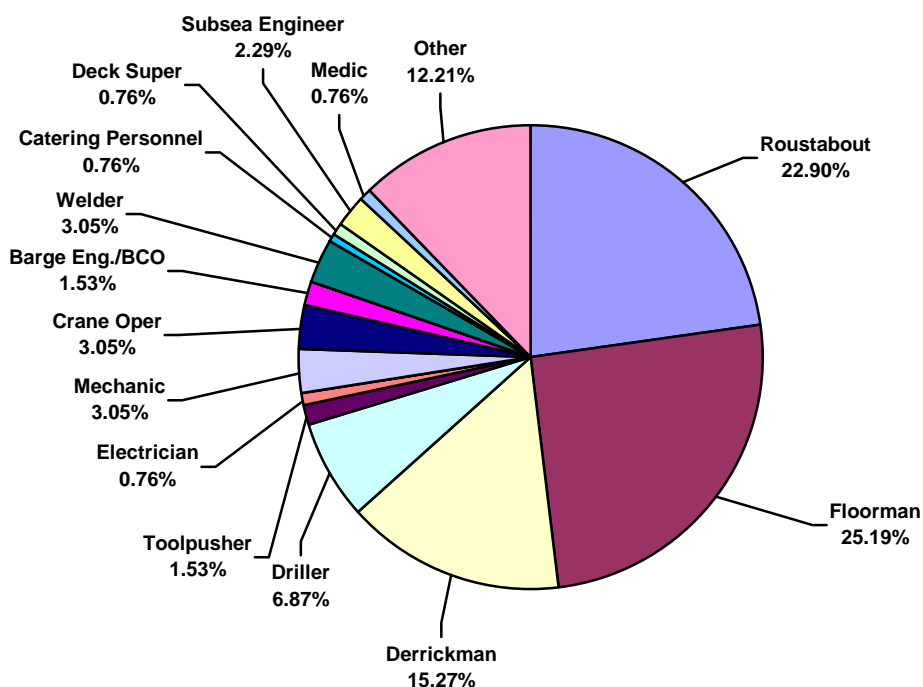




**Asia Pacific Water Total Lost Time Incidents by Occupation (Chart 3)**  
Based on 51 Incidents

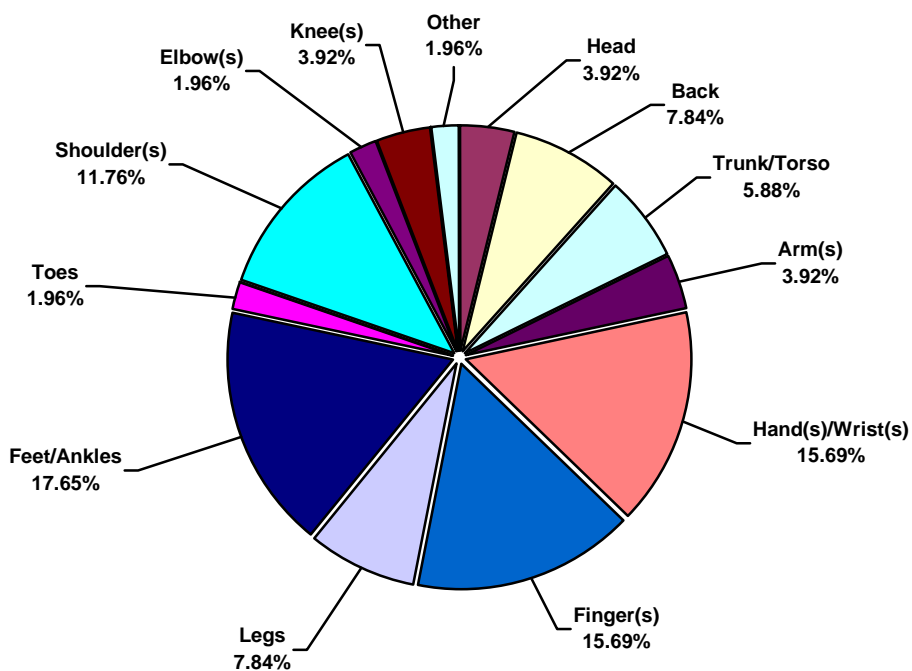


**Asia Pacific Water Total Recordable Incidents by Occupation (Chart 4)**  
Based on 131 Incidents

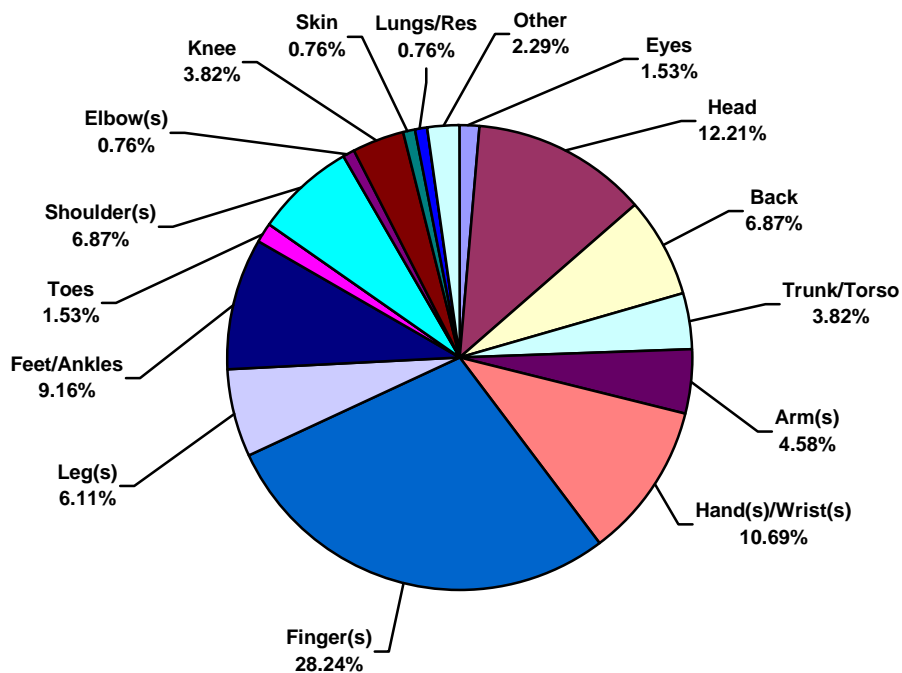




**Asia Pacific Water Total Lost Time Incidents by Body Part (Chart 5)**  
Based on 51 Incidents

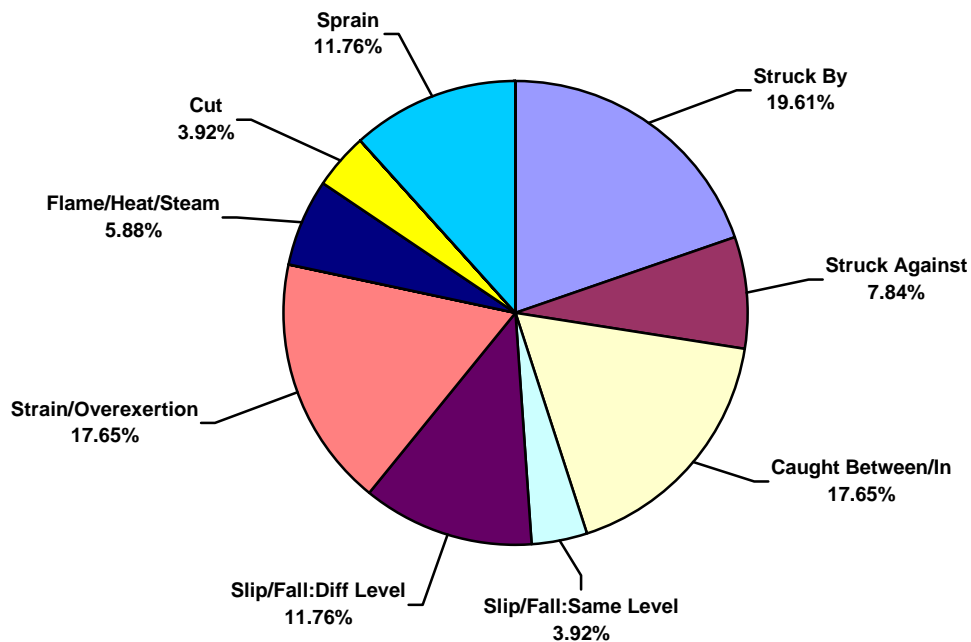


**Asia Pacific Water Total Recordable Incidents by Body Part (Chart 6)**  
Based on 131 Incidents

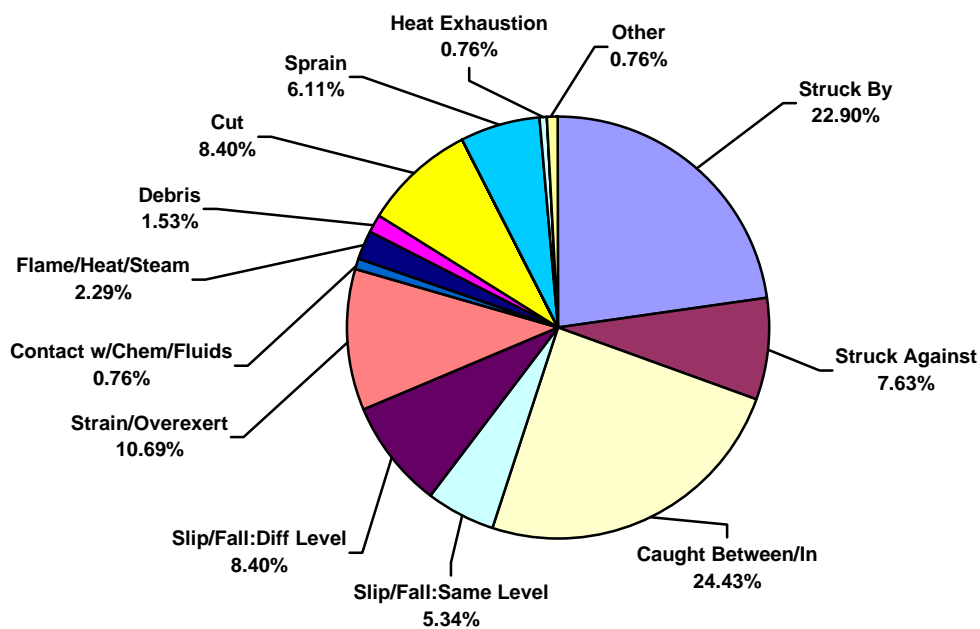




**Asia Pacific Water Total Lost Time Incidents by Incident Type (Chart 7)**  
Based on 51 Incidents

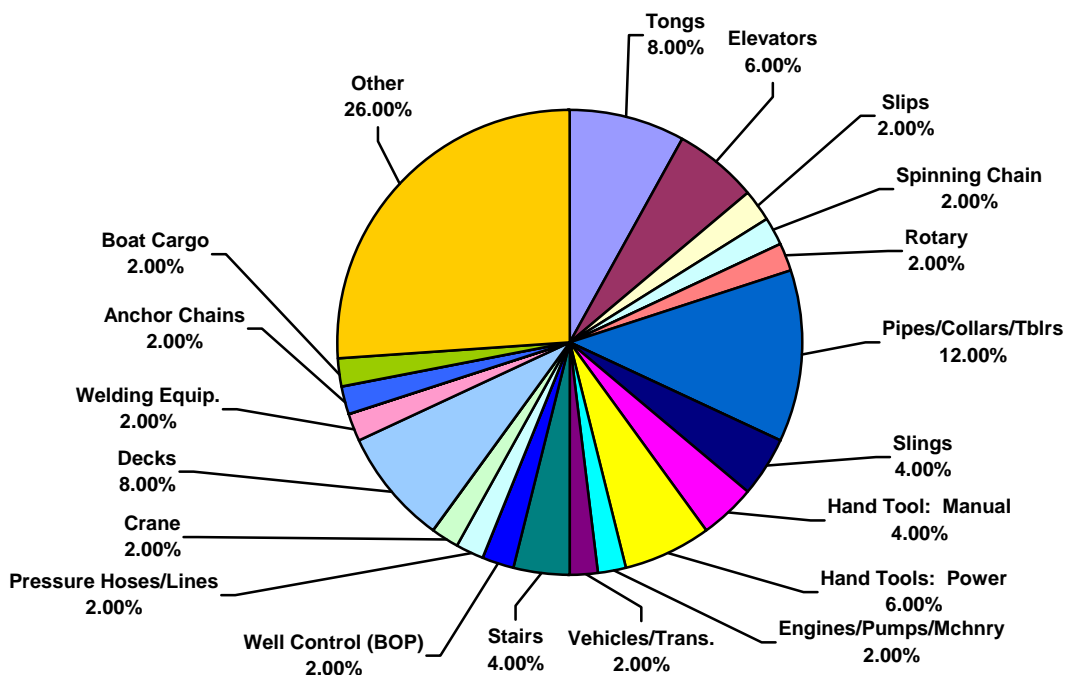


**Asia Pacific Water Total Recordable Incidents by Incident Type (Chart 8)**  
Based on 131 Incidents

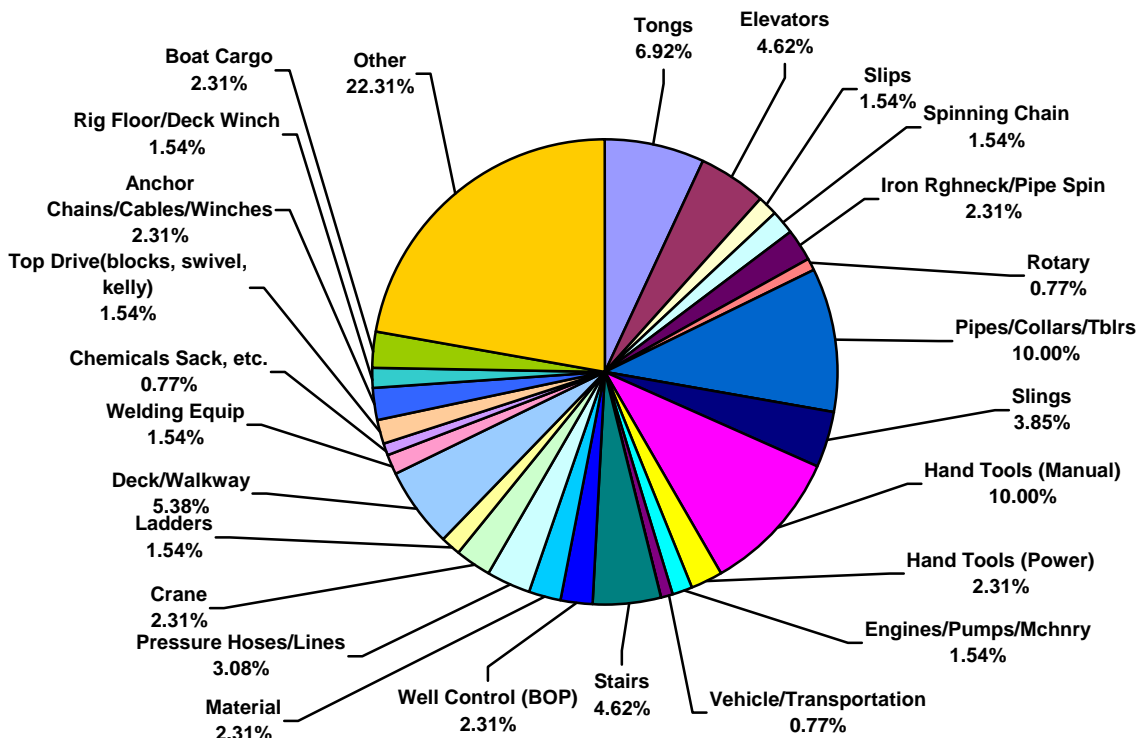




**Asia Pacific Water Total Lost Time Incidents by Equipment (Chart 9)**  
Based on 50 Incidents

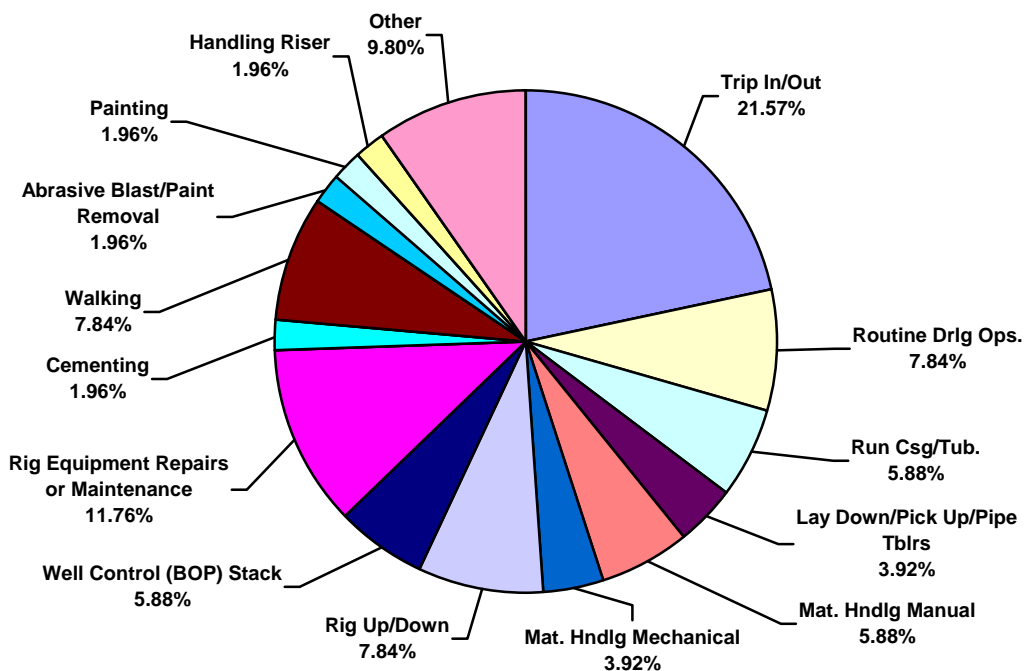


**Asia Pacific Water Total Recordable Incidents by Equipment (Chart 10)**  
Based on 130 Incidents

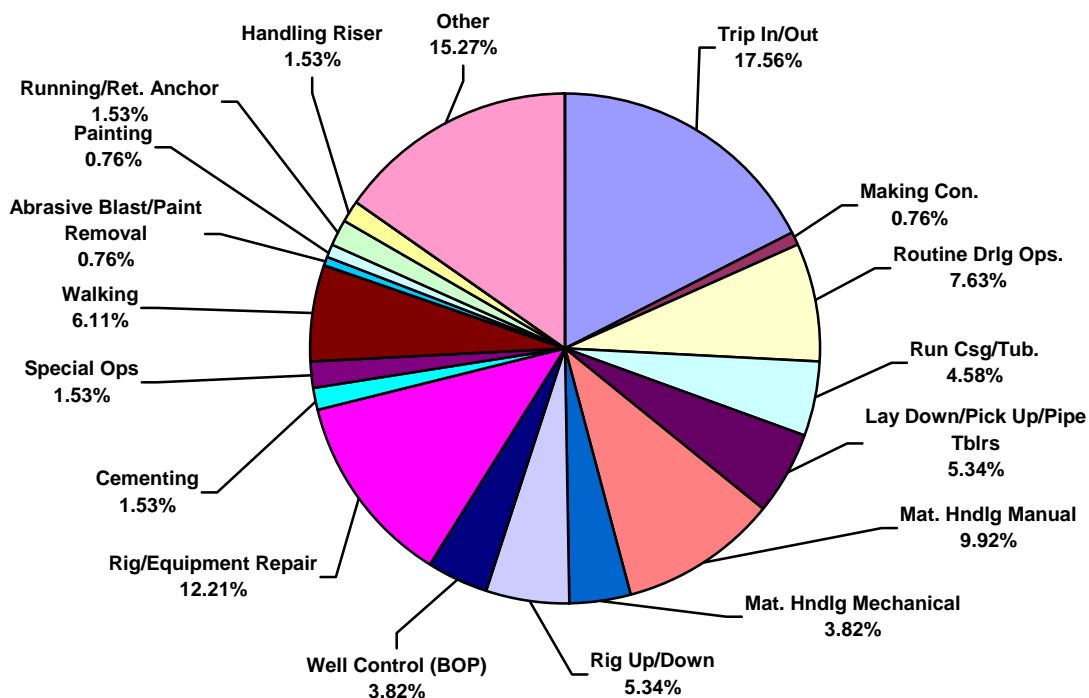




**Asia Pacific Water Total Lost Time Incidents by Operation (Chart 11)**  
Based on 51 Incidents

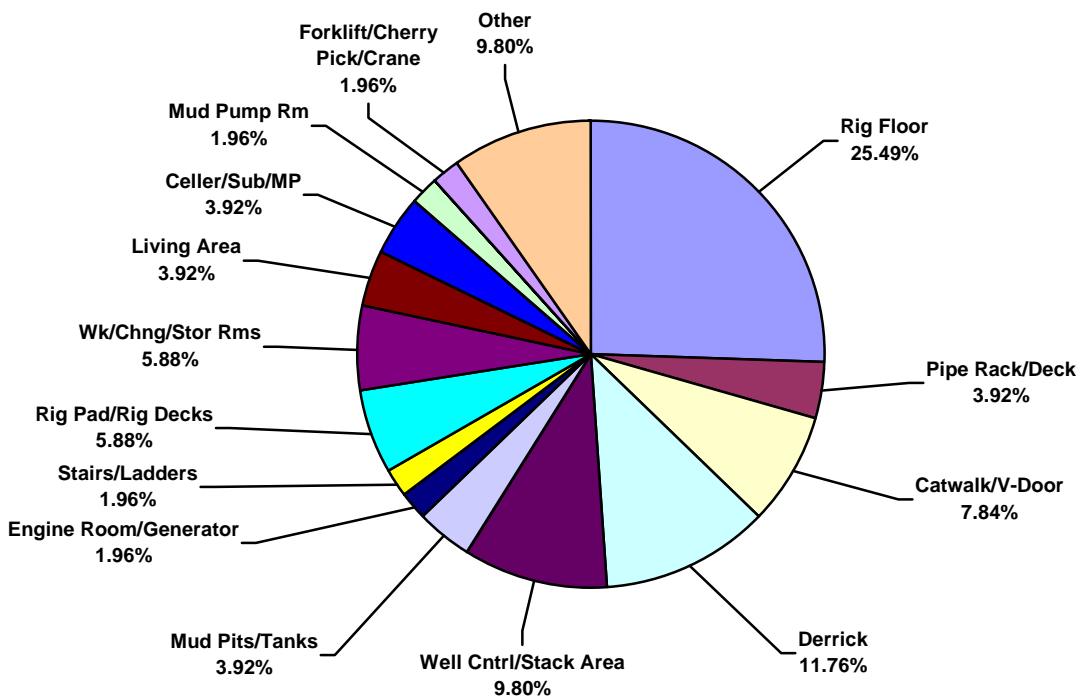


**Asia Pacific Water Total Recordable Incidents by Operation (Chart 12)**  
Based on 131 Incidents

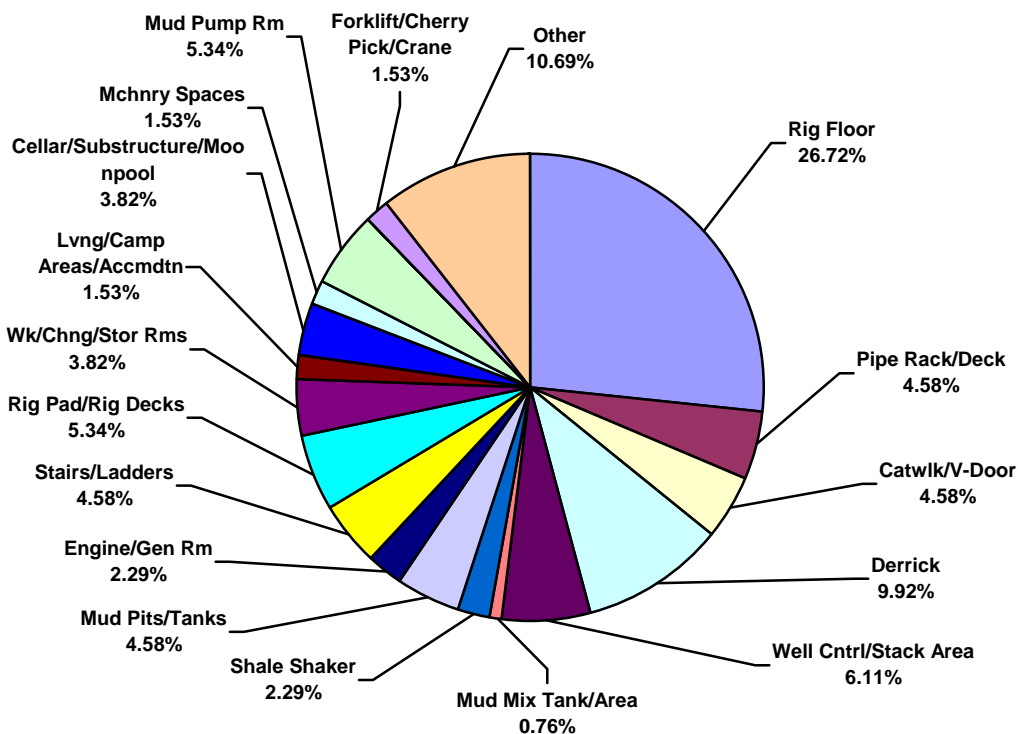




**Asia Pacific Water Total Lost Time Incidents by Location (Chart 13)**  
Based on 51 Incidents

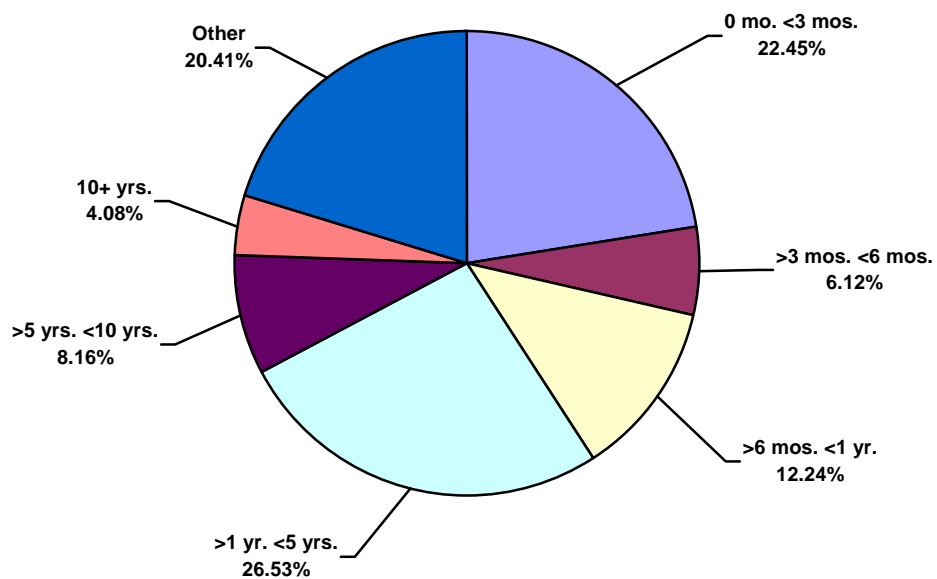


**Asia Pacific Water Total Recordable Incidents by Location (Chart 14)**  
Based on 131 Incidents

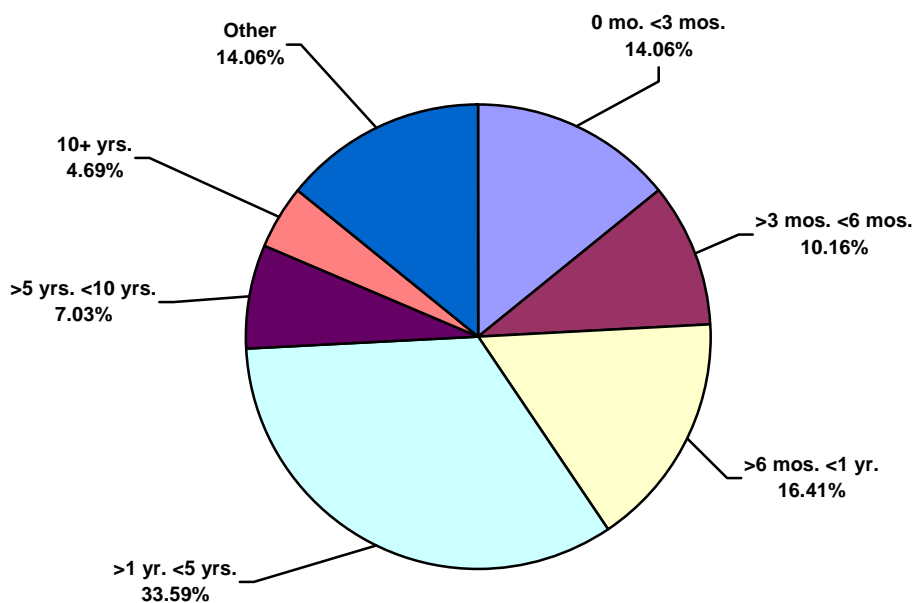




**Asia Pacific Water Total Lost Time Incidents by Time in Service (Chart 15)**  
Based on 49 Incidents

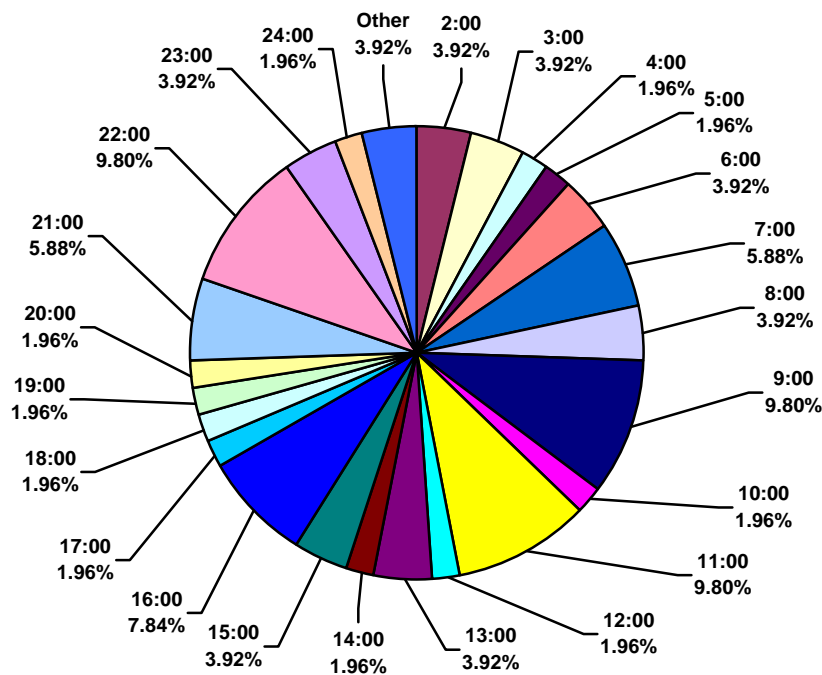


**Asia Pacific Water Total Recordable Incidents by Time in Service (Chart 16)**  
Based on 128 Incidents





**Asia Pacific Water Total Lost Time Incidents by Time of Day (Chart 17)**  
Based on 51 Incidents



**Asia Pacific Water Total Recordable Incidents by Time of Day (Chart 18)**  
Based on 131 Incidents

