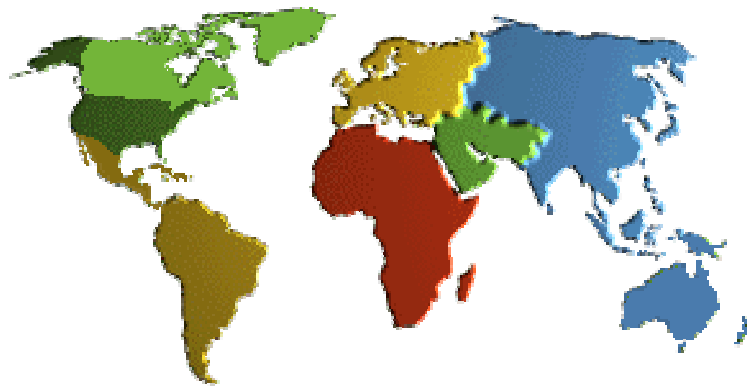




# IADC ASP PROGRAM

2006



## Summary of Occupational Incidents (Asia Pacific Land Totals)



# Table of Contents

(Table of Contents is Hyperlinked, Just click on Topic & go)

IADC 2006 ASIA PACIFIC LAND TOTALS (TABLE 1) .....	3
<i>Asia Pacific Land Total Incidence Rates vs Man-hours (Figure 1)</i> .....	3
IADC 2006 ASIA PACIFIC LAND CHARTS .....	4
<i>Asia Pacific Land Total Lost Time Incidents by Month (Chart 1)</i> .....	4
<i>Asia Pacific Land Total Recordable Incidents by Month (Chart 2)</i> .....	4
<i>Asia Pacific Land Total Lost Time Incidents by Occupation (Chart 3)</i> .....	5
<i>Asia Pacific Land Total Recordable Incidents by Occupation (Chart 4)</i> .....	5
<i>Asia Pacific Land Total Lost Time Incidents by Body Part (Chart 5)</i> .....	6
<i>Asia Pacific Land Total Recordable Incidents by Body Part (Chart 6)</i> .....	6
<i>Asia Pacific Land Total Lost Time Incidents by Incident Type (Chart 7)</i> .....	7
<i>Asia Pacific Land Total Recordable Incidents by Incident Type (Chart 8)</i> .....	7
<i>Asia Pacific Land Total Lost Time Incidents by Equipment (Chart 9)</i> .....	8
<i>Asia Pacific Land Total Lost Time Incidents by Operation (Chart 11)</i> .....	9
<i>Asia Pacific Land Total Recordable Incidents by Operation (Chart 12)</i> .....	9
<i>Asia Pacific Land Total Lost Time Incidents by Location (Chart 13)</i> .....	10
<i>Asia Pacific Land Total Recordable Incidents by Location (Chart 14)</i> .....	10
<i>Asia Pacific Land Total Lost Time Incidents by Time in Service (Chart 15)</i> .....	11
<i>Asia Pacific Land Total Recordable Incidents by Time in Service (Chart 16)</i> .....	11
<i>Asia Pacific Land Total Lost Time Incidents by Time of Day (Chart 17)</i> .....	12
<i>Asia Pacific Land Total Recordable Incidents by Time of Day (Chart 18)</i> .....	12



## IADC 2006 Asia Pacific Land Totals (Table 1)

	<u>Total</u>
Total Man-hours	<b>16,986,603</b>
Total Medical Treatment Incidents	<b>50</b>
Total Restricted Work Incidents	<b>21</b>
Total Lost Time Incidents	<b>33</b>
Total Fatalities	<b>0</b>
Total Recordables	<b>104</b>
MTO Incidence Rate	<b>0.59</b>
RWC Incidence Rate	<b>0.25</b>
LTI Incidence Rate	<b>0.39</b>
LTI Frequency Rate	<b>1.94</b>
DART Incidence Rate	<b>0.64</b>
DART Frequency Rate	<b>3.18</b>
Recordable Incidence Rate	<b>1.22</b>
Recordable Frequency Rate	<b>6.12</b>

Companies Reporting: Land – 16

Medical Treatment Incidence Rate = MTOs X 200,000

Restricted Work Incidence Rate = RWCs X 200,000

Lost Time Incidence Rate = LTIs + FTLs X 200,000

DART Incidence Rate = LTIs + RWC X 200,000

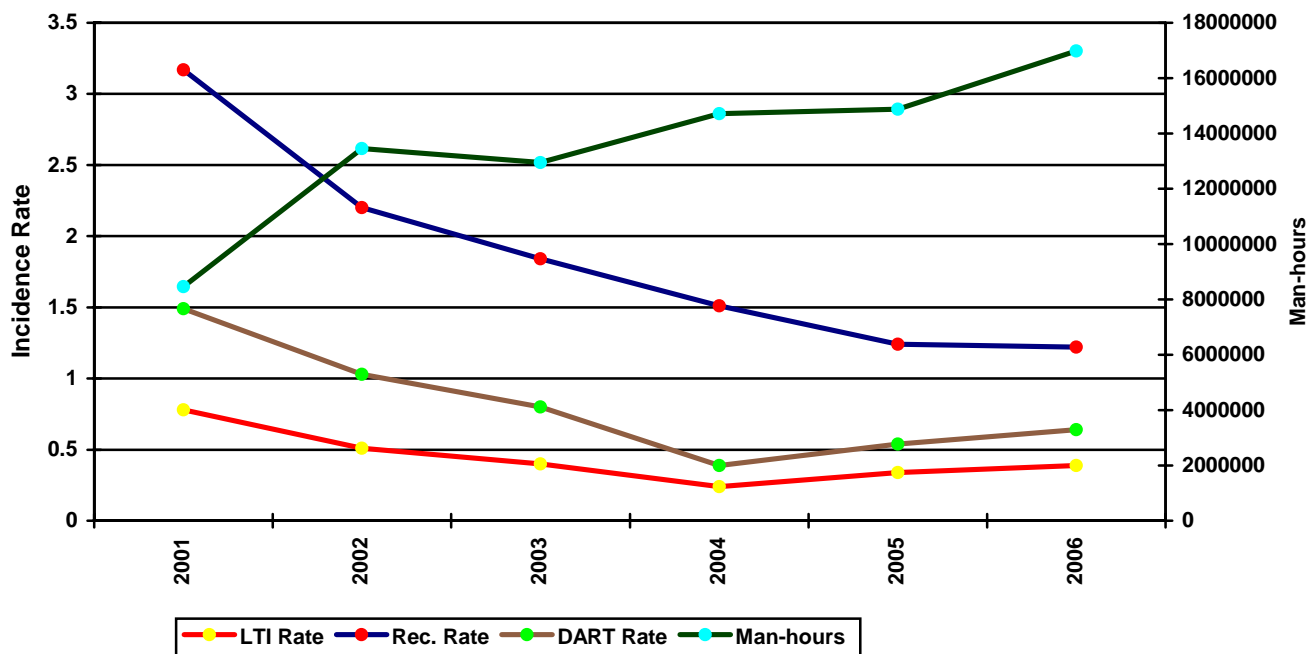
Recordable Incidence Rate = RCRD X 200,000

Lost Time Frequency Rate = LTIs +FTLs X 1,000,000

DART Frequency Rate = LTIs + RWC X 1,000,000

Recordable Frequency Rate = RCRD X 1,000,000

Asia Pacific Land Total Incidence Rates vs Man-hours (Figure 1)

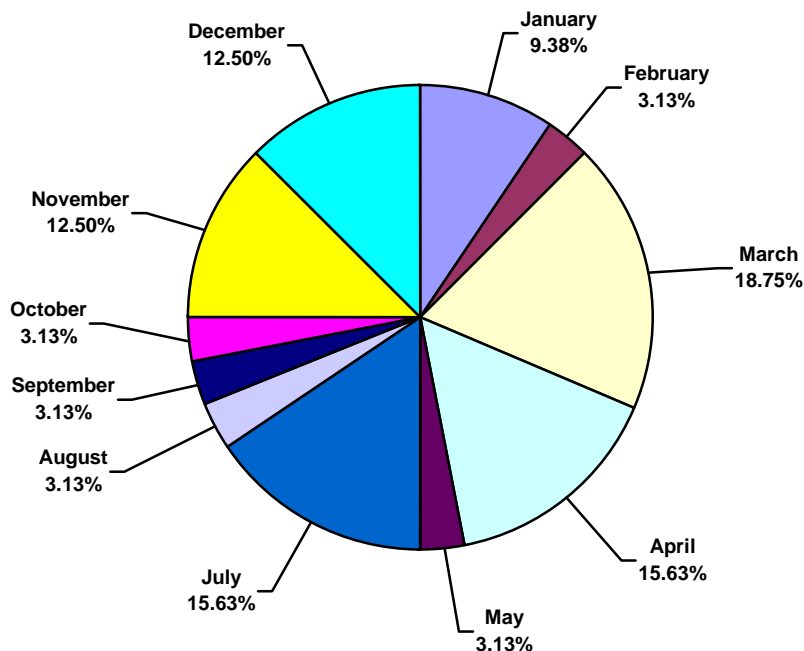




## IADC 2006 Asia Pacific Land Charts

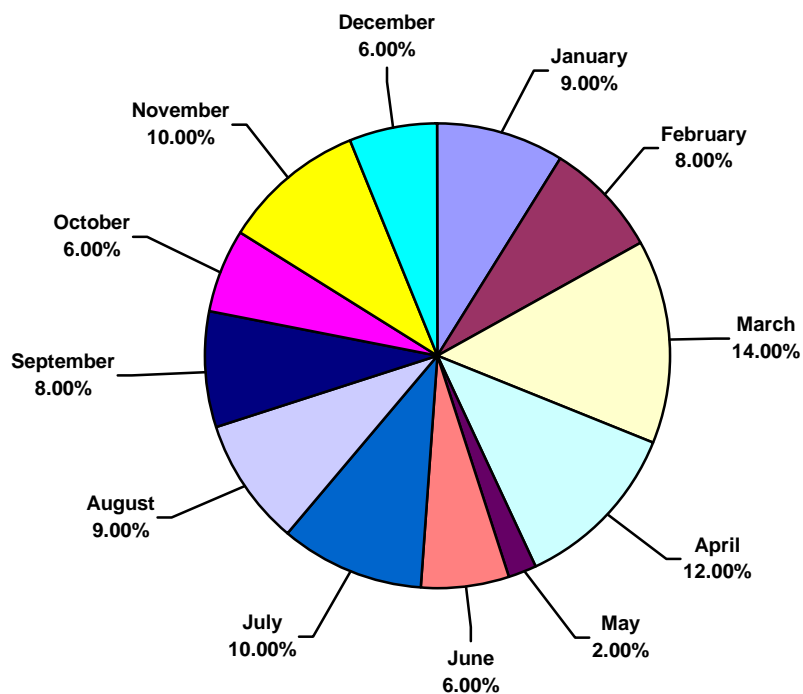
### Asia Pacific Land Total Lost Time Incidents by Month (Chart 1)

Based on 32 Incidents



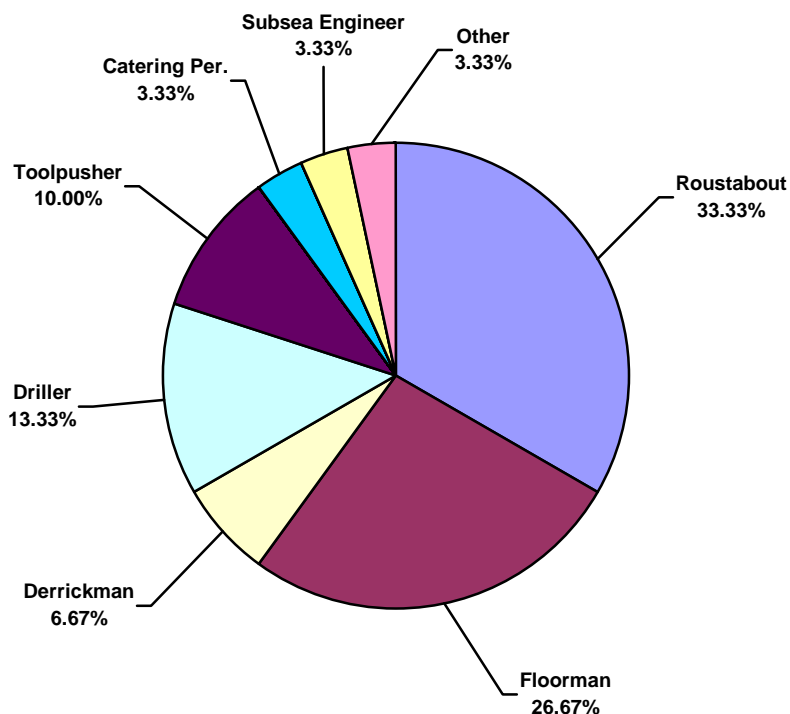
### Asia Pacific Land Total Recordable Incidents by Month (Chart 2)

Based on 100 Incidents

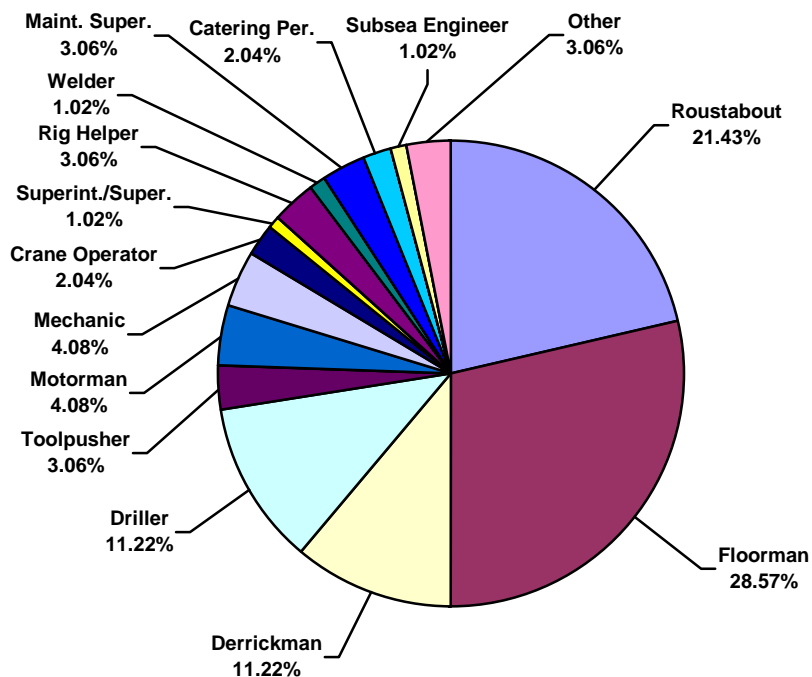




**Asia Pacific Land Total Lost Time Incidents by Occupation (Chart 3)**  
Based on 30 Incidents

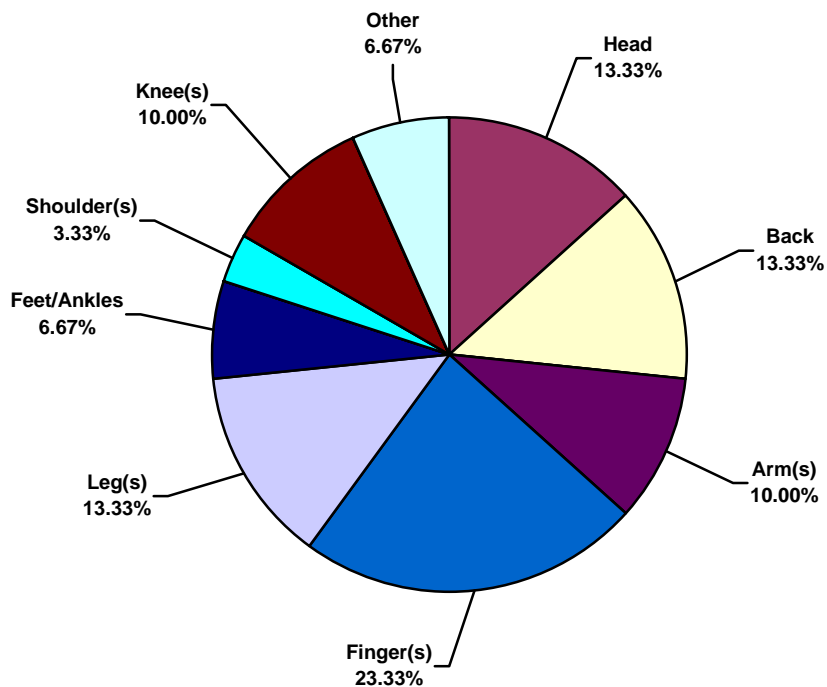


**Asia Pacific Land Total Recordable Incidents by Occupation (Chart 4)**  
Based on 98 Incidents

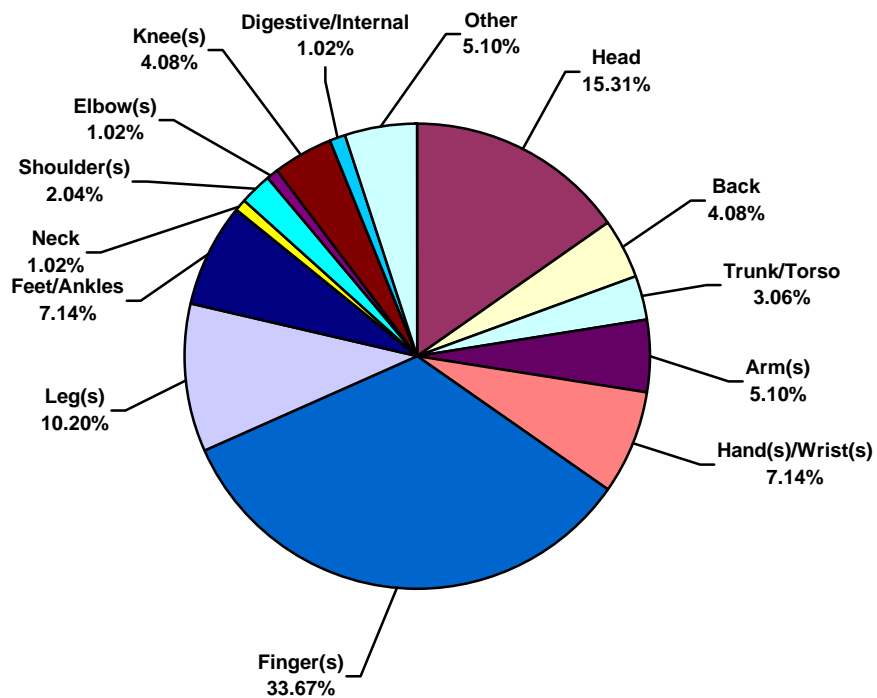




**Asia Pacific Land Total Lost Time Incidents by Body Part (Chart 5)**  
Based on 30 Incidents



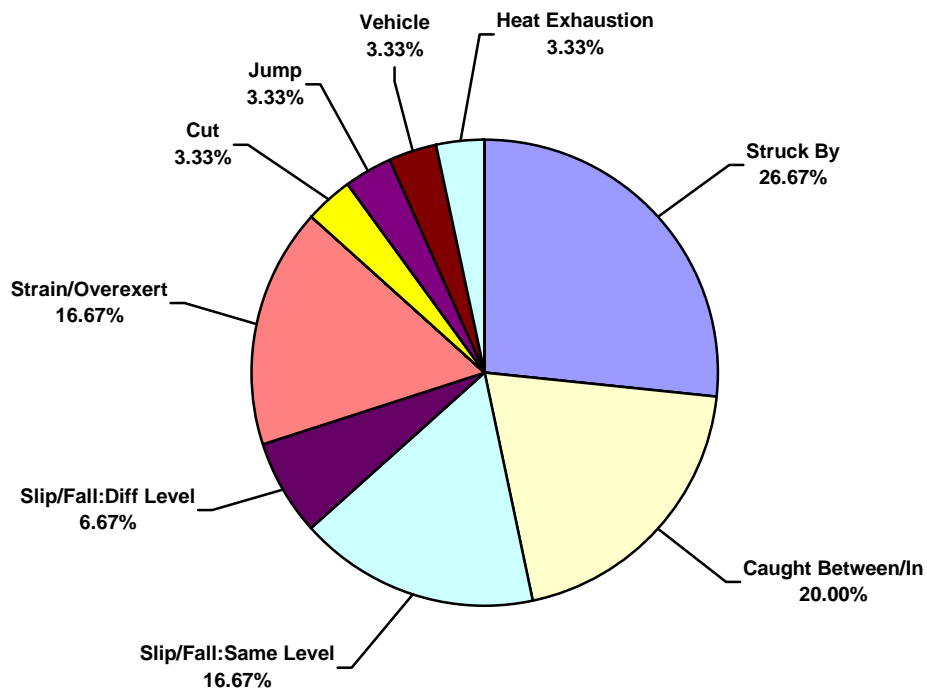
**Asia Pacific Land Total Recordable Incidents by Body Part (Chart 6)**  
Based on 98 Incidents





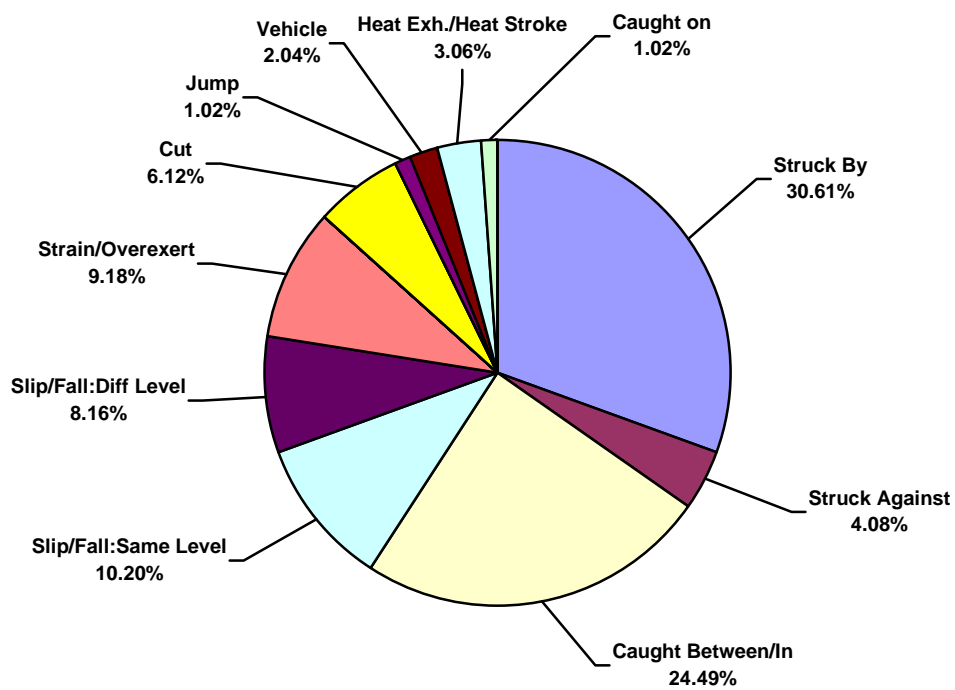
### Asia Pacific Land Total Lost Time Incidents by Incident Type (Chart 7)

Based on 30 Incidents



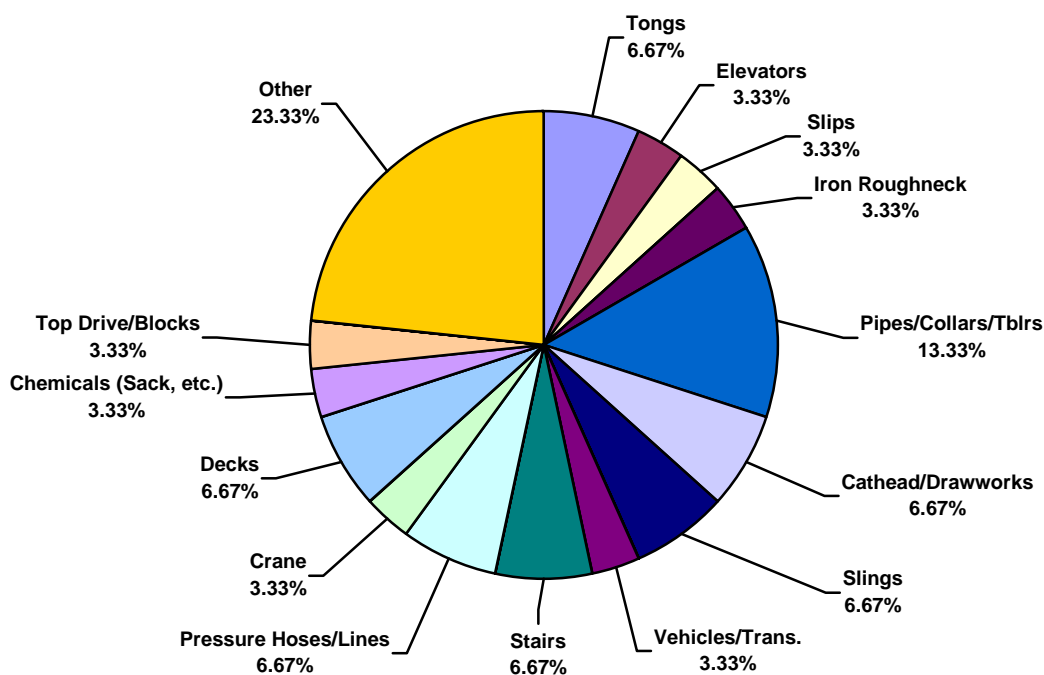
### Asia Pacific Land Total Recordable Incidents by Incident Type (Chart 8)

Based on 98 Incidents

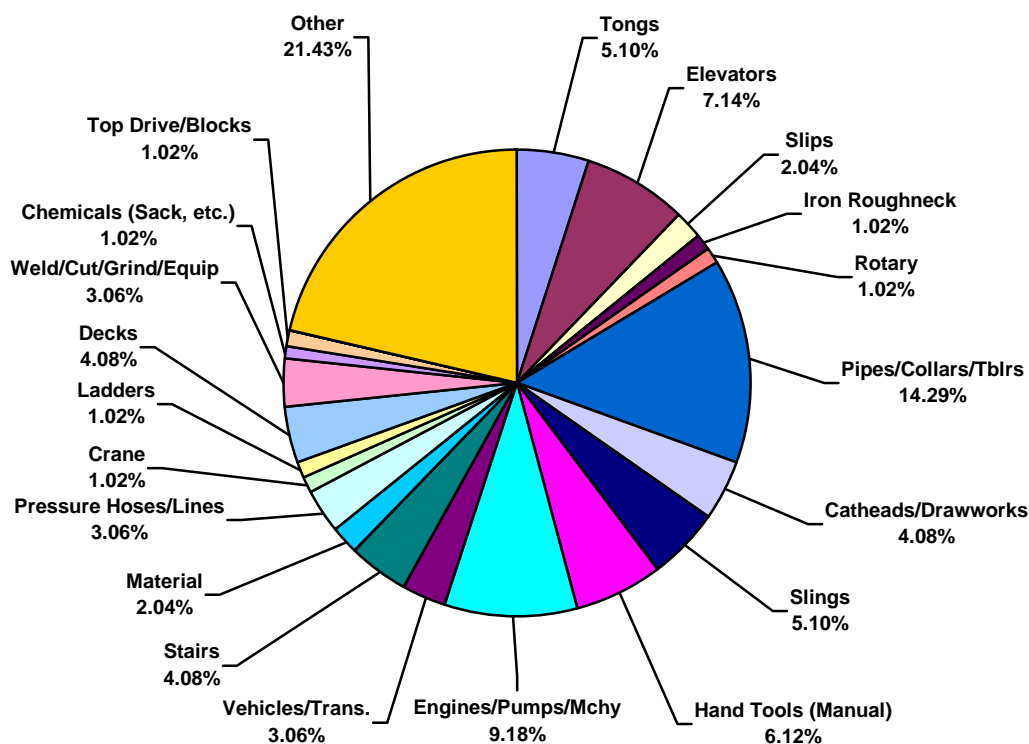




**Asia Pacific Land Total Lost Time Incidents by Equipment (Chart 9)**  
Based on 30 Incidents



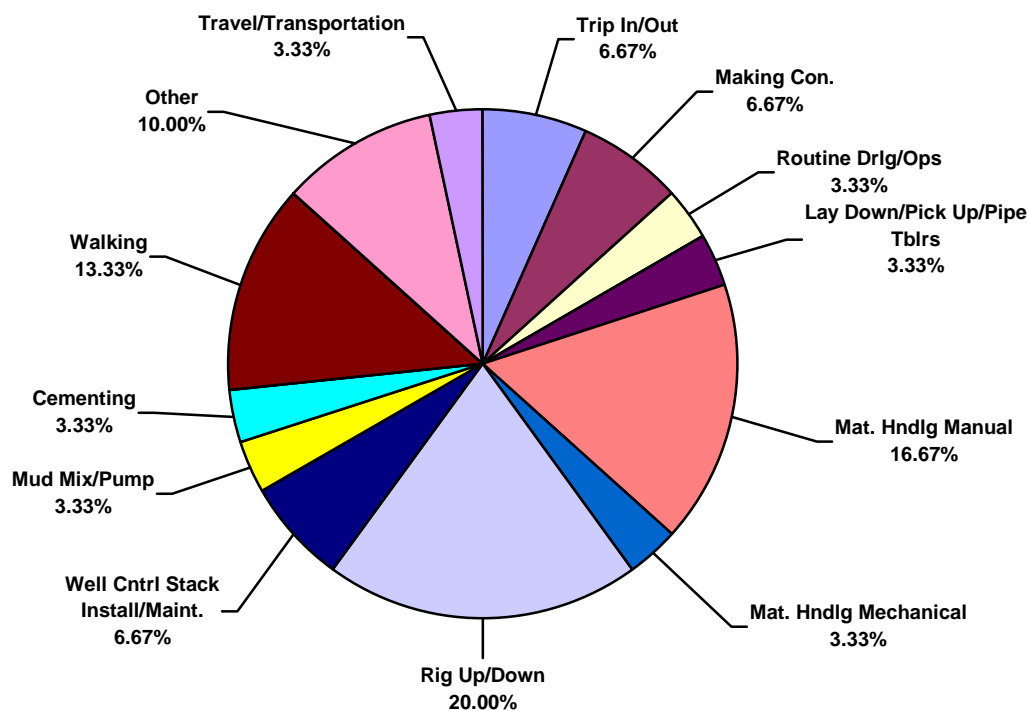
**Asia Pacific Land Total Recordable Incidents by Equipment (Chart 10)**  
Based on 98 Incidents





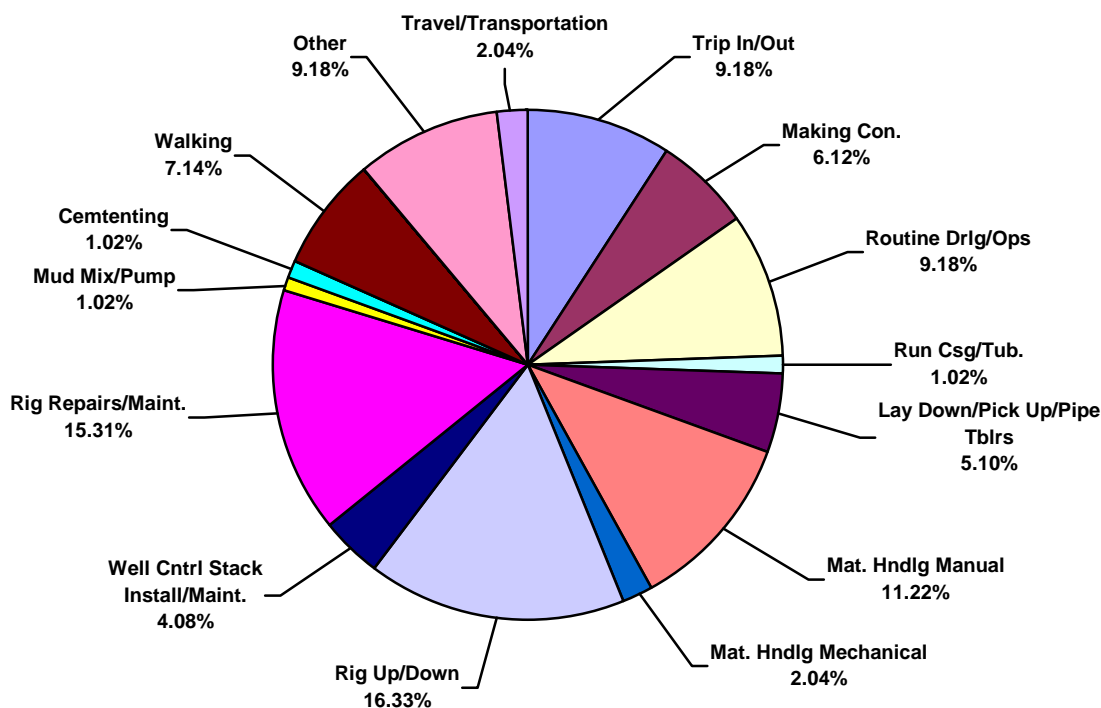
### Asia Pacific Land Total Lost Time Incidents by Operation (Chart 11)

Based on 30 Incidents



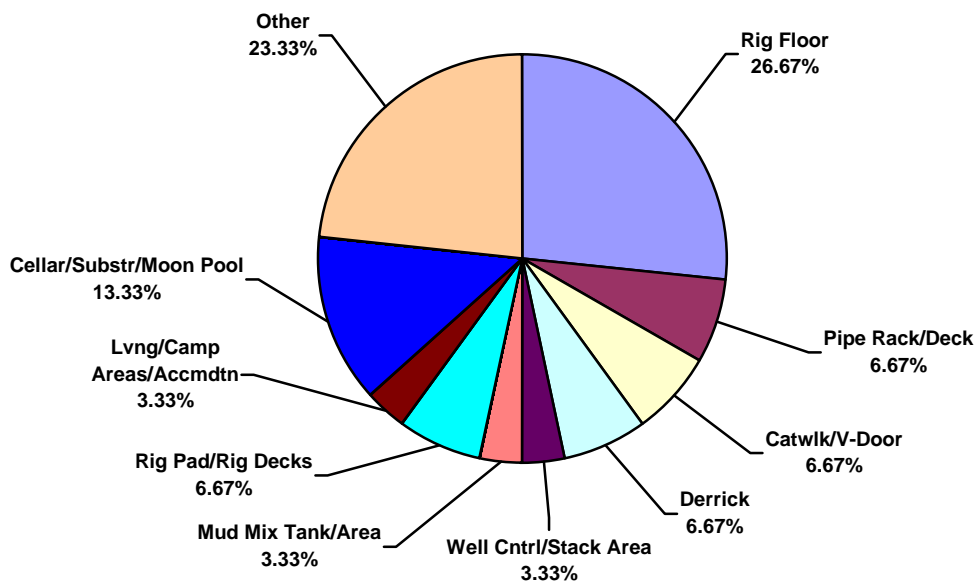
### Asia Pacific Land Total Recordable Incidents by Operation (Chart 12)

Based on 98 Incidents

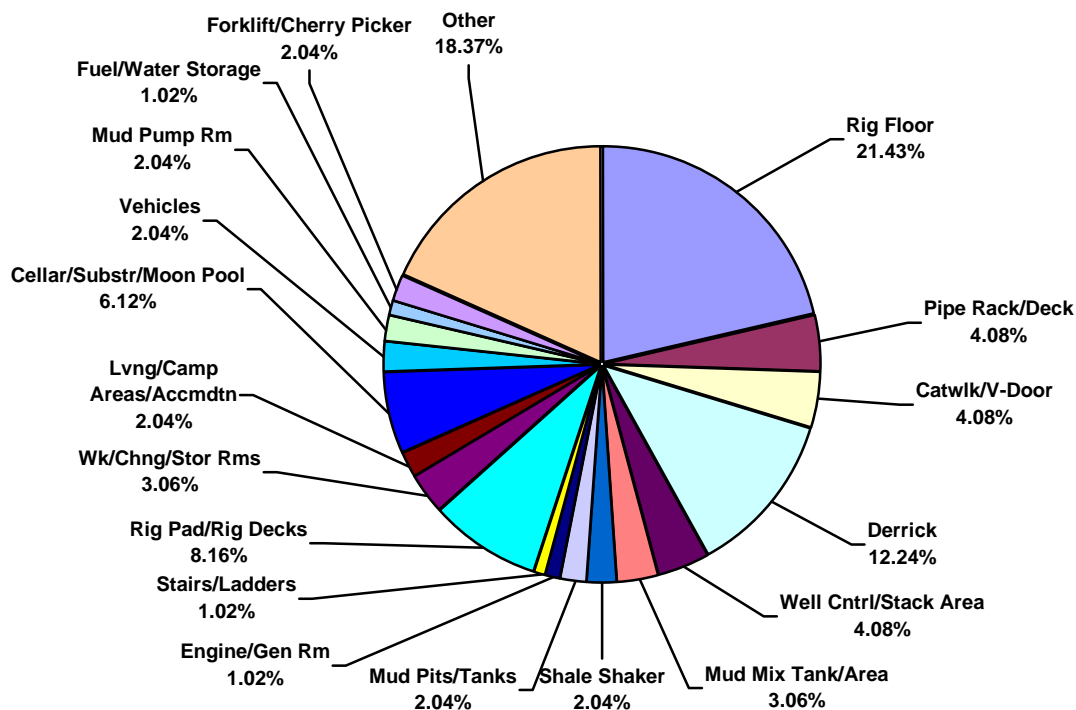




**Asia Pacific Land Total Lost Time Incidents by Location (Chart 13)**  
Based on 30 Incidents

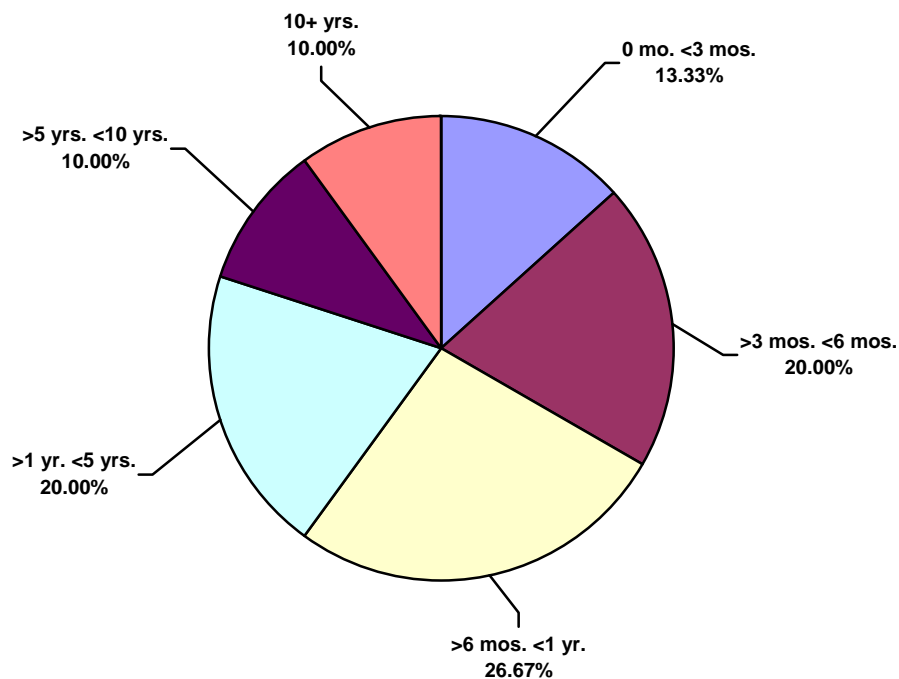


**Asia Pacific Land Total Recordable Incidents by Location (Chart 14)**  
Based on 98 Incidents

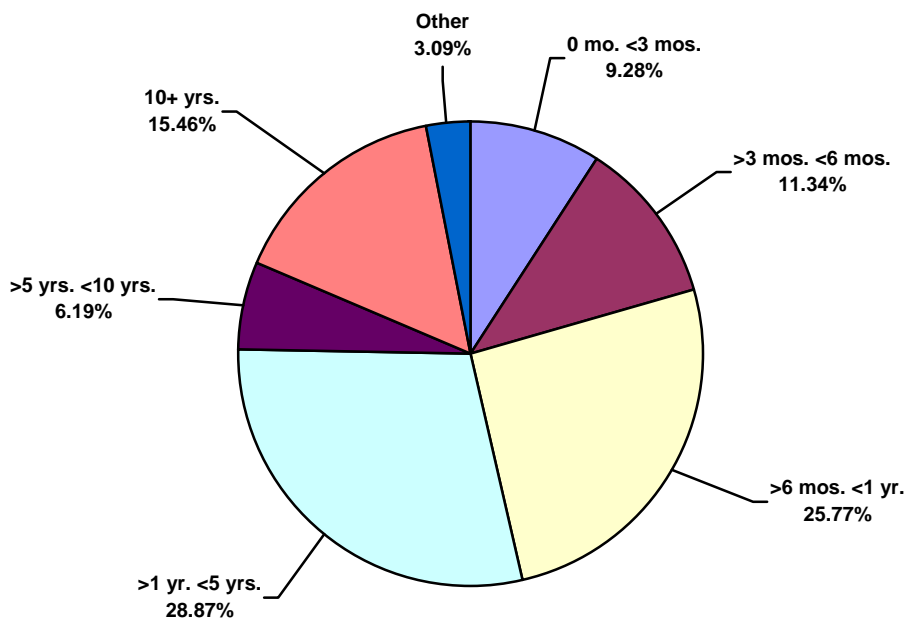




**Asia Pacific Land Total Lost Time Incidents by Time in Service (Chart 15)**  
Based on 30 Incidents

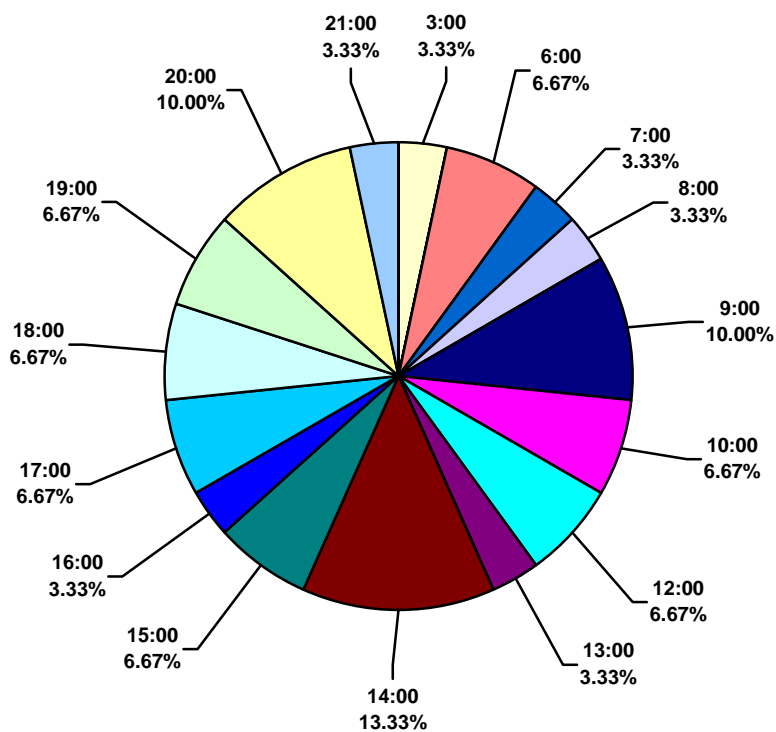


**Asia Pacific Land Total Recordable Incidents by Time in Service (Chart 16)**  
Based on 97 Incidents





**Asia Pacific Land Total Lost Time Incidents by Time of Day (Chart 17)**  
Based on 30 Incidents



**Asia Pacific Land Total Recordable Incidents by Time of Day (Chart 18)**  
Based on 98 Incidents

