



# IADC ASP PROGRAM

2005



## Summary of Occupational Incidents (US Water Totals)



# Table of Contents

(Table of Contents is Hyperlinked, Just click on Topic & go)

|   |    |
|---|----|
| IADC 2005 US WATER TOTALS (TABLE 1).....  | 3  |
| <i>US Water Total LTI &amp; Recordable Incidence Rates vs Manhours (Figure 1)</i> ..... | 3  |
| IADC 2005 US WATER CHARTS .....   | 4  |
| <i>US Water Total Lost Time Incidents by Month (Chart 1)</i> .....                      | 4  |
| <i>US Water Total Recordable Incidents by Month (Chart 2)</i> .....                     | 4  |
| <i>US Water Total Lost Time Incidents by Occupation (Chart 3)</i> .....                 | 5  |
| <i>US Water Total Recordable Incidents by Occupation (Chart 4)</i> .....                | 5  |
| <i>US Water Total Lost Time Incidents by Body Part (Chart 5)</i> .....                  | 6  |
| <i>US Water Total Recordable Incidents by Body Part (Chart 6)</i> .....                 | 6  |
| <i>US Water Total Lost Time Incidents by Incident Type (Chart 7)</i> .....              | 7  |
| <i>US Water Total Recordable Incidents by Incident Type (Chart 8)</i> .....             | 7  |
| <i>US Water Total Lost Time Incidents by Equipment (Chart 9)</i> .....                  | 8  |
| <i>US Water Total Recordable Incidents by Equipment (Chart 10)</i> .....                | 8  |
| <i>US Water Total Lost Time Incidents by Operation (Chart 11)</i> .....                 | 9  |
| <i>US Water Total Recordable Incidents by Operation (Chart 12)</i> .....                | 9  |
| <i>US Water Total Lost Time Incidents by Location (Chart 13)</i> .....                  | 10 |
| <i>US Water Total Recordable Incidents by Location (Chart 14)</i> .....                 | 10 |
| <i>US Water Total Lost Time Incidents by Time in Service (Chart 15)</i> .....           | 11 |
| <i>US Water Total Recordable Incidents by Time in Service (Chart 16)</i> .....          | 11 |
| <i>US Water Total Lost Time Incidents by Time of Day (Chart 17)</i> .....               | 12 |
| <i>US Water Total Recordable Incidents by Time of Day (Chart 18)</i> .....              | 12 |



## IADC 2005 US Water Totals (Table 1)

|                                   |                   |
|-----------------------------------|-------------------|
|                                   | <u>Total</u>      |
| Total Manhours                    | <b>38,210,049</b> |
| Total Medical Treatment Incidents | <b>124</b>        |
| Total Restricted Work Incidents   | <b>99</b>         |
| Total Lost Time Incidents         | <b>55</b>         |
| Total Fatalities                  | <b>0</b>          |
| Total Recordables                 | <b>278</b>        |
|                                   |                   |
| MTO Incidence Rate                | <b>0.65</b>       |
| RWC Incidence Rate                | <b>0.52</b>       |
| LTI Incidence Rate                | <b>0.29</b>       |
| LTI Frequency Rate                | <b>1.44</b>       |
| DART Incidence Rate               | <b>0.81</b>       |
| DART Frequency Rate               | <b>4.03</b>       |
| Recordable Incidence Rate         | <b>1.46</b>       |
| Recordable Frequency Rate         | <b>7.28</b>       |

Companies Reporting: Water - 16

Medical Treatment Incidence Rate = MTOs X 200,000

Restricted Work Incidence Rate = RWCs X 200,000

Lost Time Incidence Rate = LTIs + FTLs X 200,000

DART Incidence Rate = LTIs + RWC X 200,000

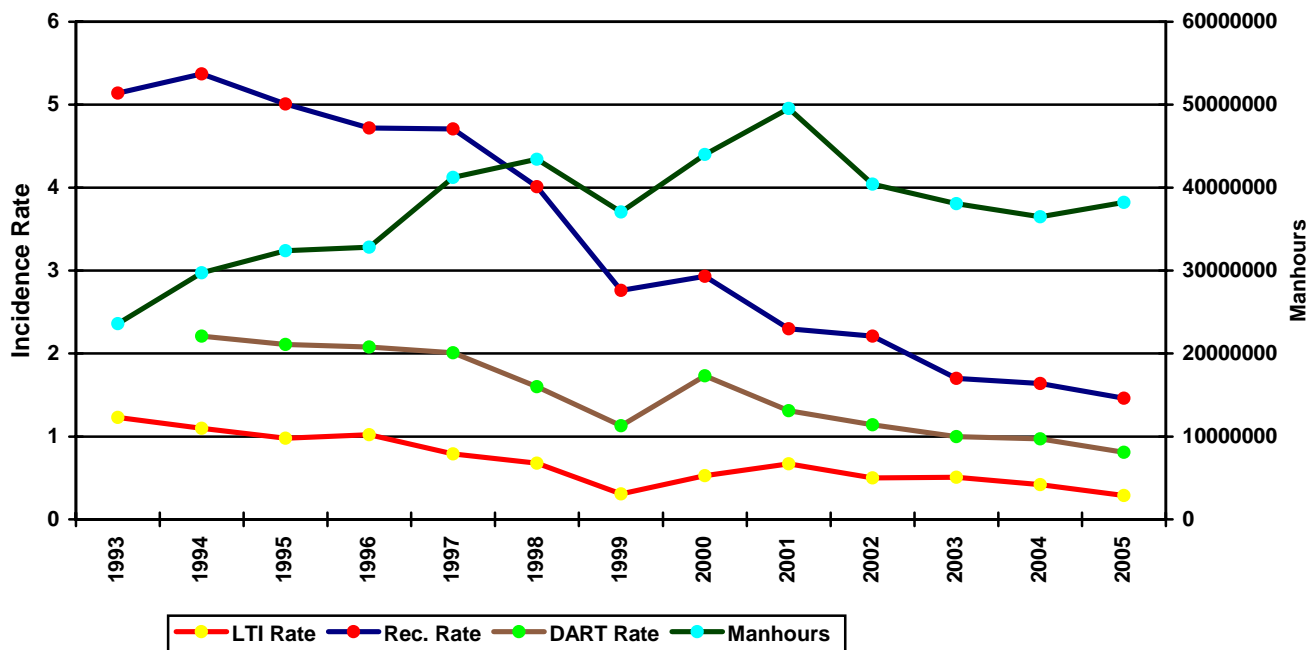
Recordable Incidence Rate = RCRD X 200,000

Lost Time Frequency Rate = LTIs +FTLs X 1,000,000

DART Frequency Rate = LTIs + RWC X 1,000,000

Recordable Frequency Rate = RCRD X 1,000,000

US Water Total LTI & Recordable Incidence Rates vs Manhours (Figure 1)

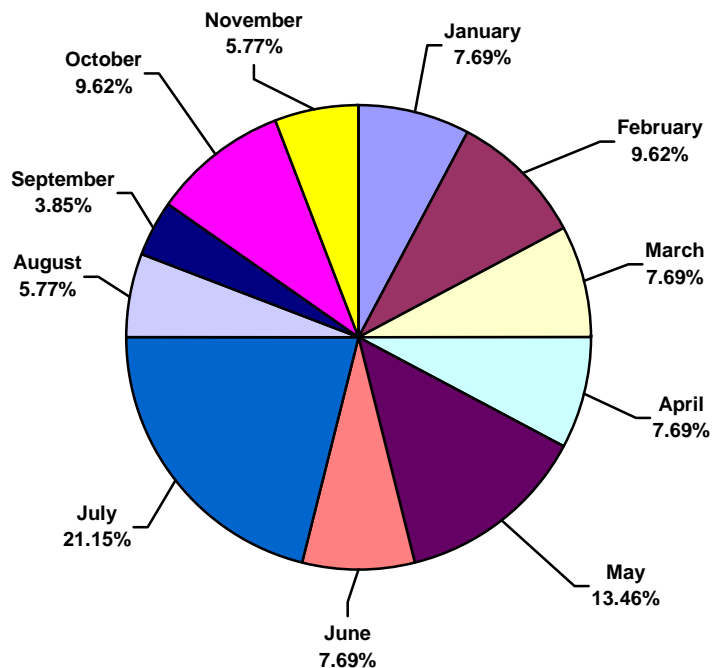




## IADC 2005 US Water Charts

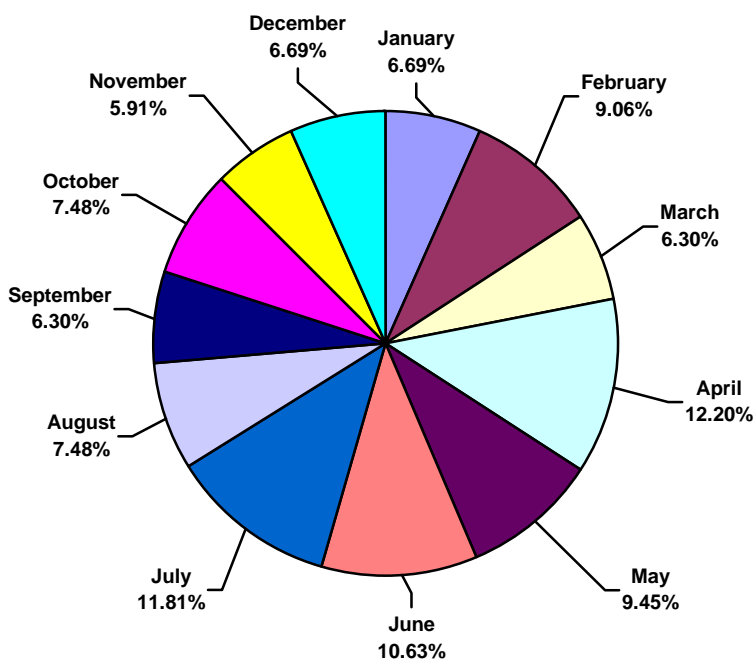
### US Water Total Lost Time Incidents by Month (Chart 1)

Based on 52 Incidents



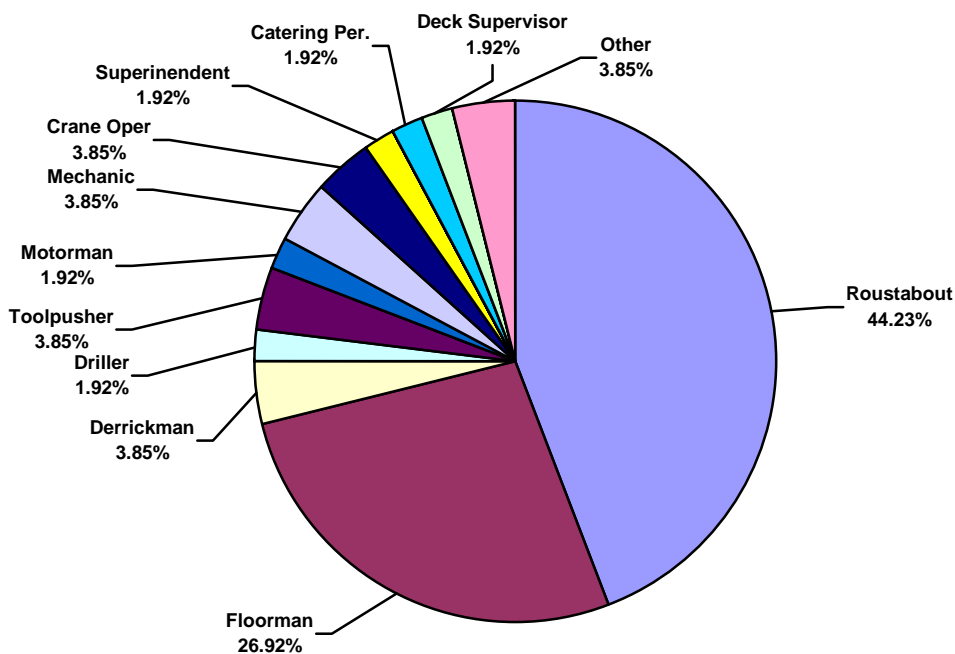
### US Water Total Recordable Incidents by Month (Chart 2)

Based on 254 Incidents

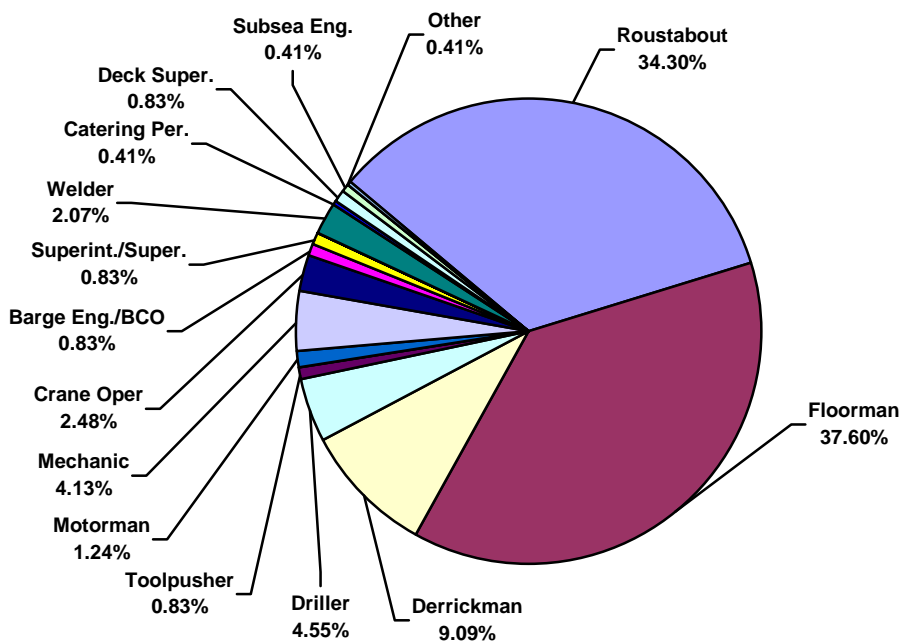




**US Water Total Lost Time Incidents by Occupation (Chart 3)**  
Based on 52 Incidents

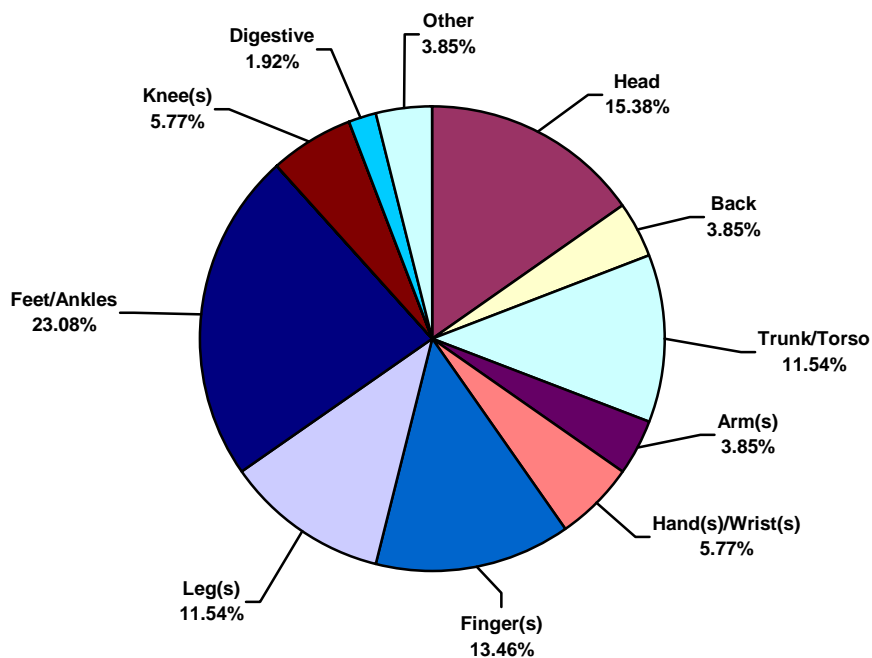


**US Water Total Recordable Incidents by Occupation (Chart 4)**  
Based on 242 Incidents

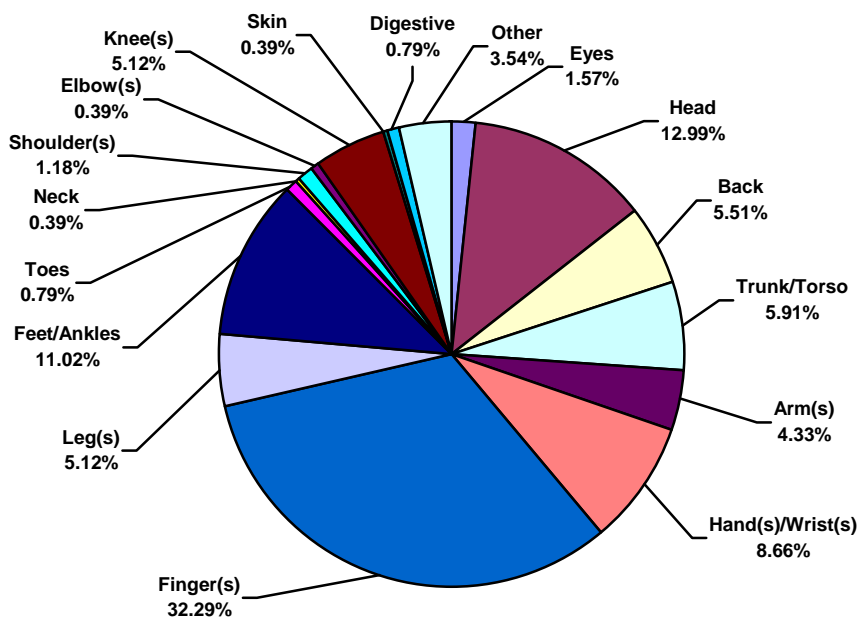




**US Water Total Lost Time Incidents by Body Part (Chart 5)**  
Based on 52 Incidents

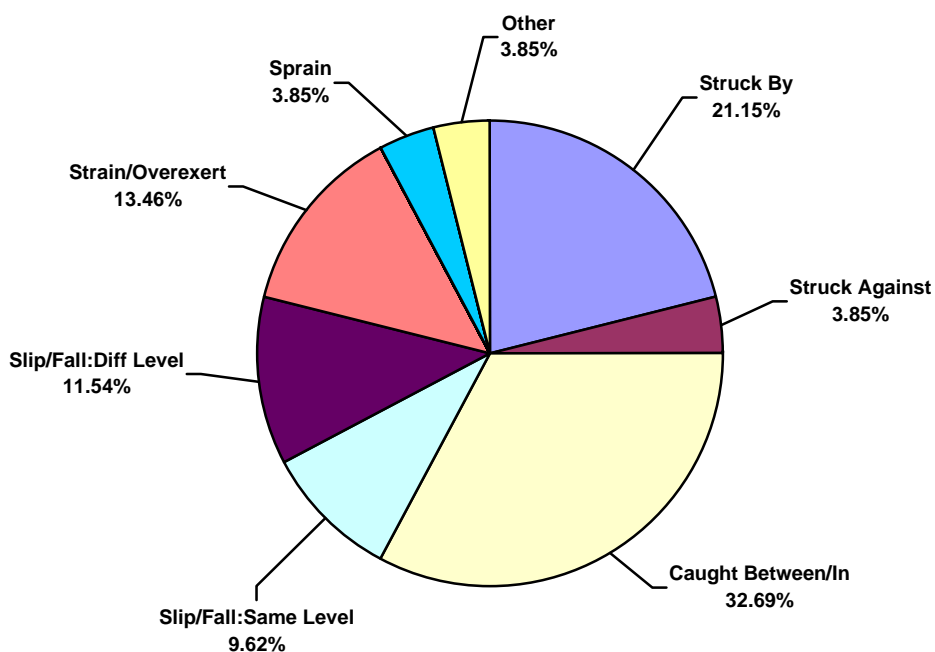


**US Water Total Recordable Incidents by Body Part (Chart 6)**  
Based on 254 Incidents

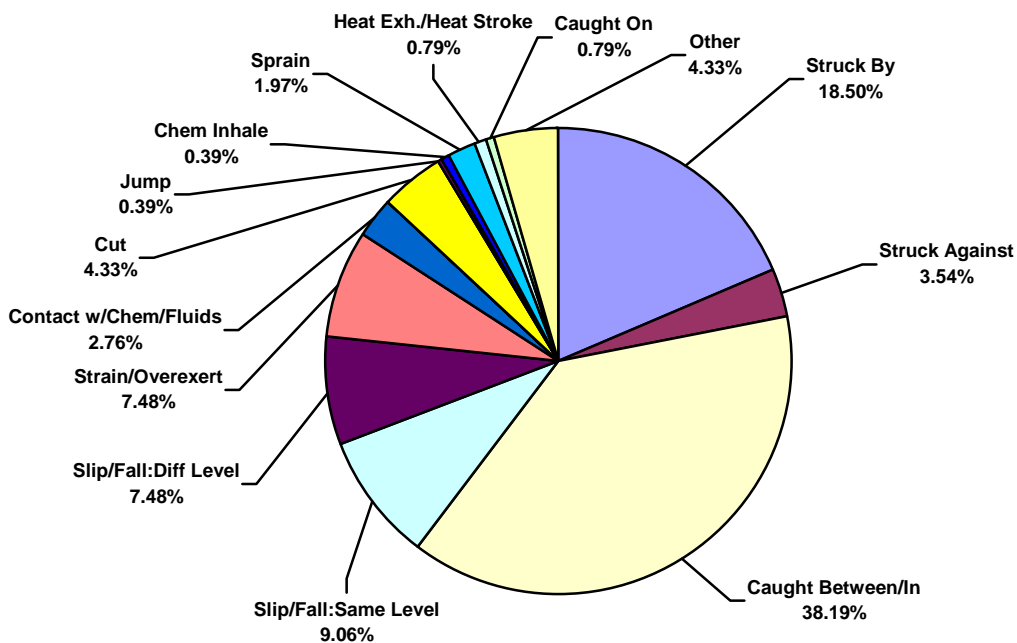




**US Water Total Lost Time Incidents by Incident Type (Chart 7)**  
Based on 52 Incidents

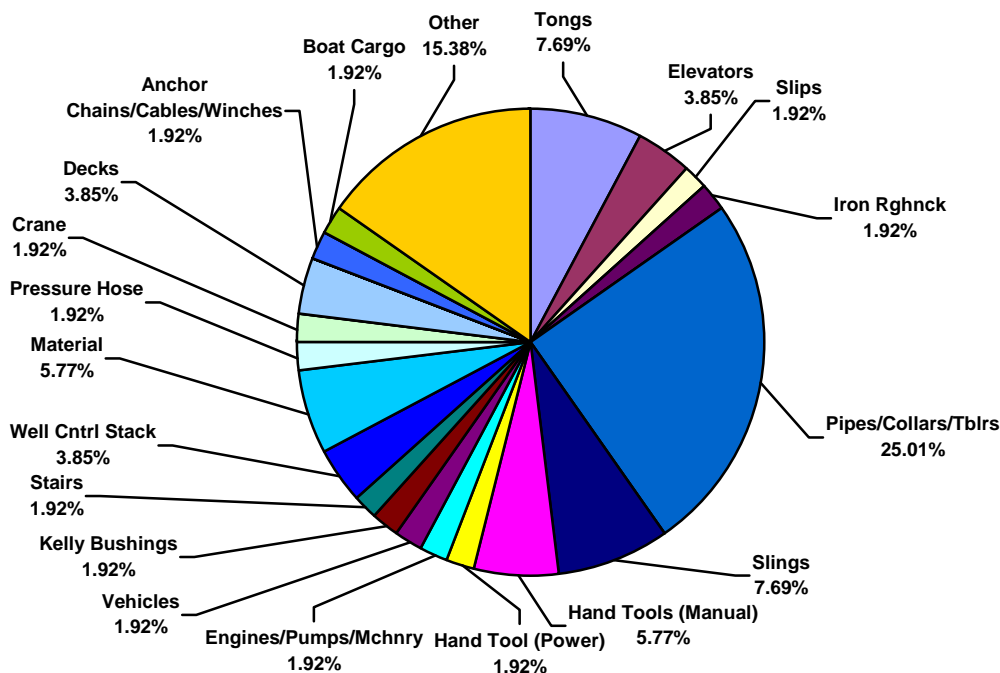


**US Water Total Recordable Incidents by Incident Type (Chart 8)**  
Based on 254 Incidents

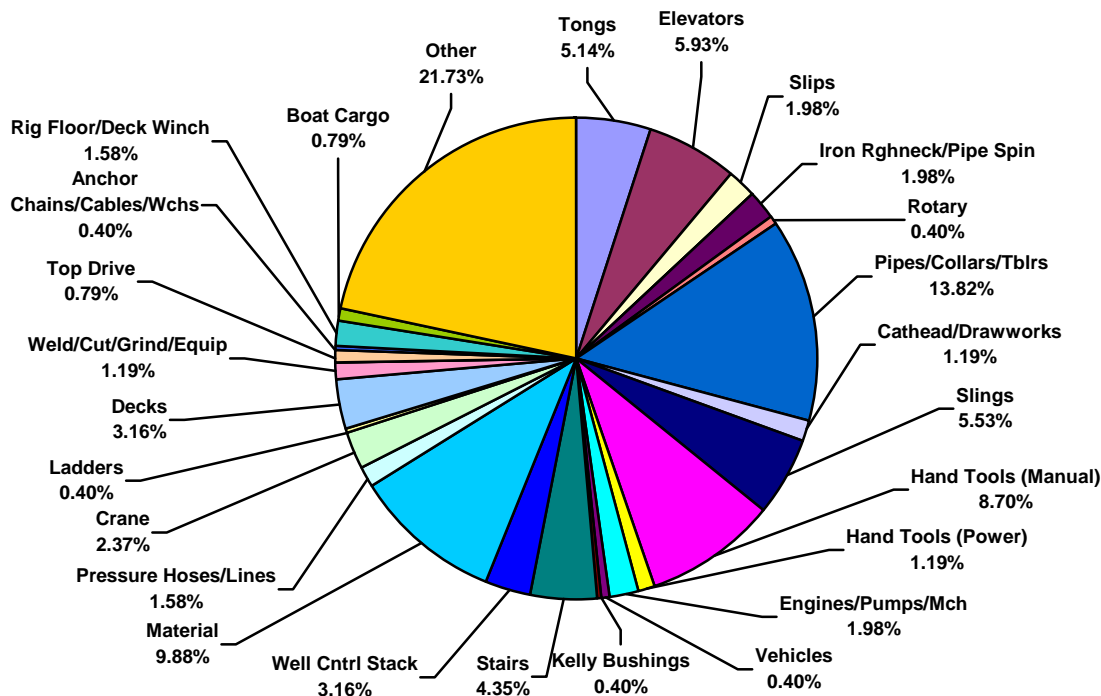




**US Water Total Lost Time Incidents by Equipment (Chart 9)**  
Based on 52 Incidents

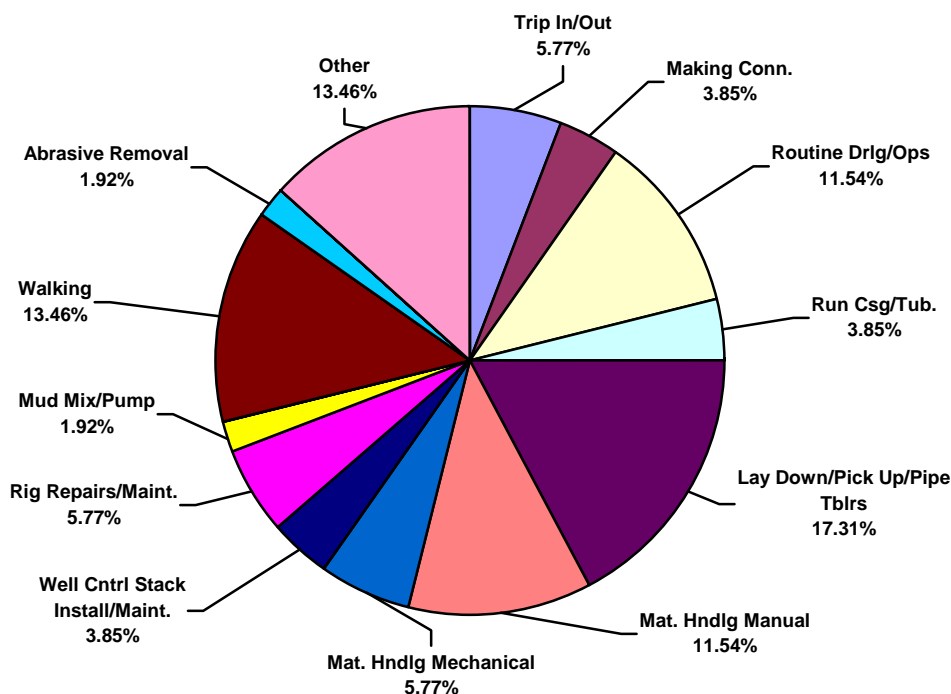


**US Water Total Recordable Incidents by Equipment (Chart 10)**  
Based on 253 Incidents

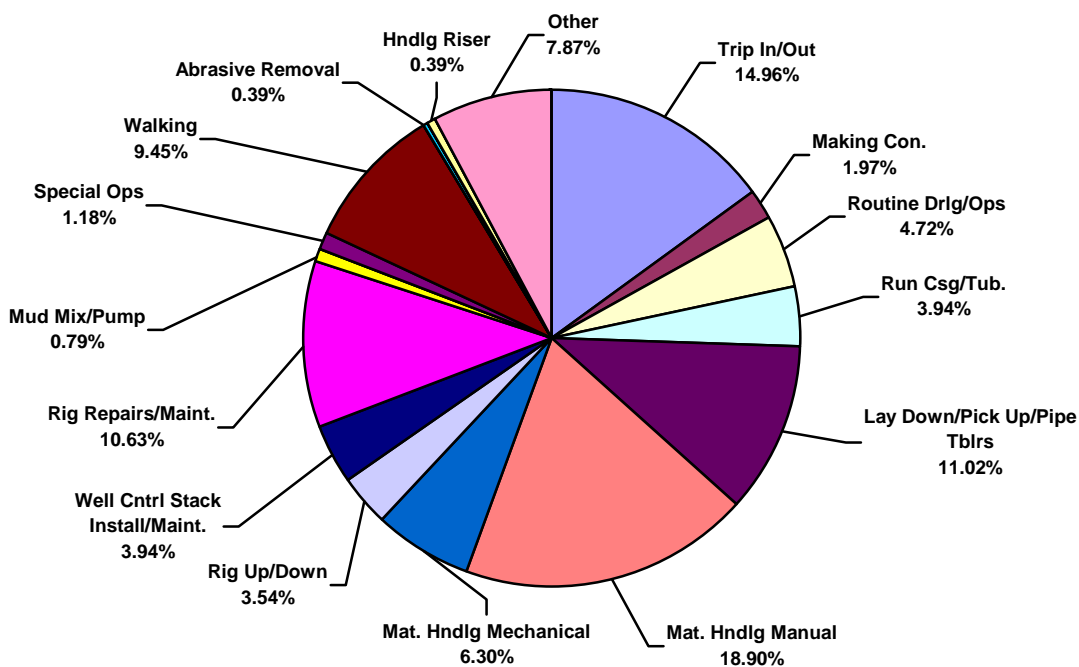




**US Water Total Lost Time Incidents by Operation (Chart 11)**  
Based on 52 Incidents

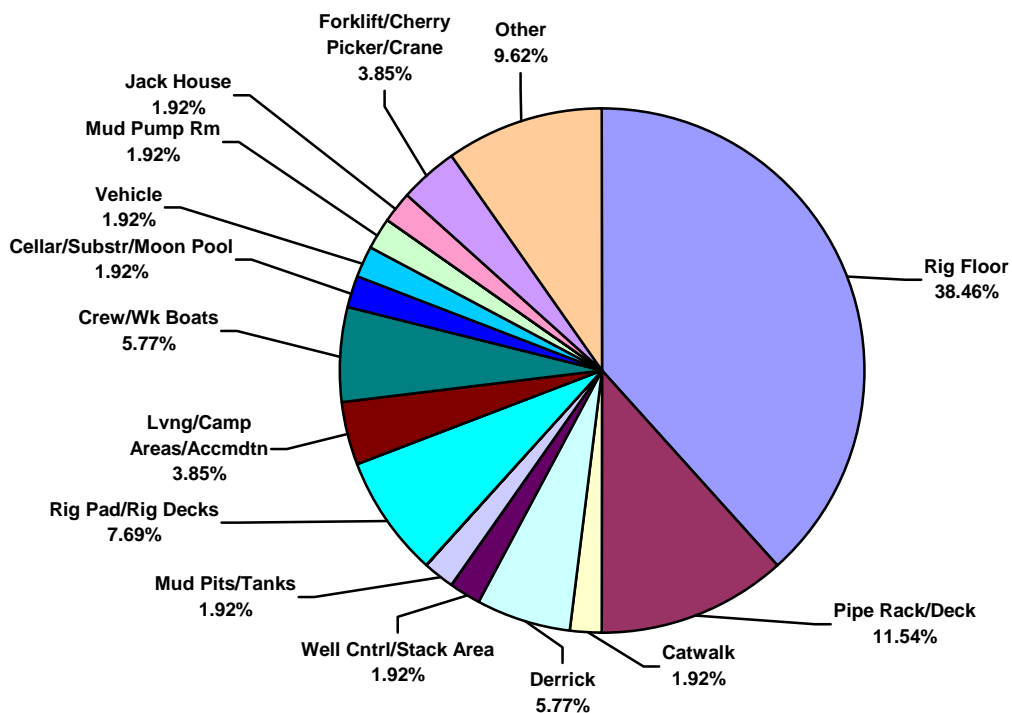


**US Water Total Recordable Incidents by Operation (Chart 12)**  
Based on 254 Incidents

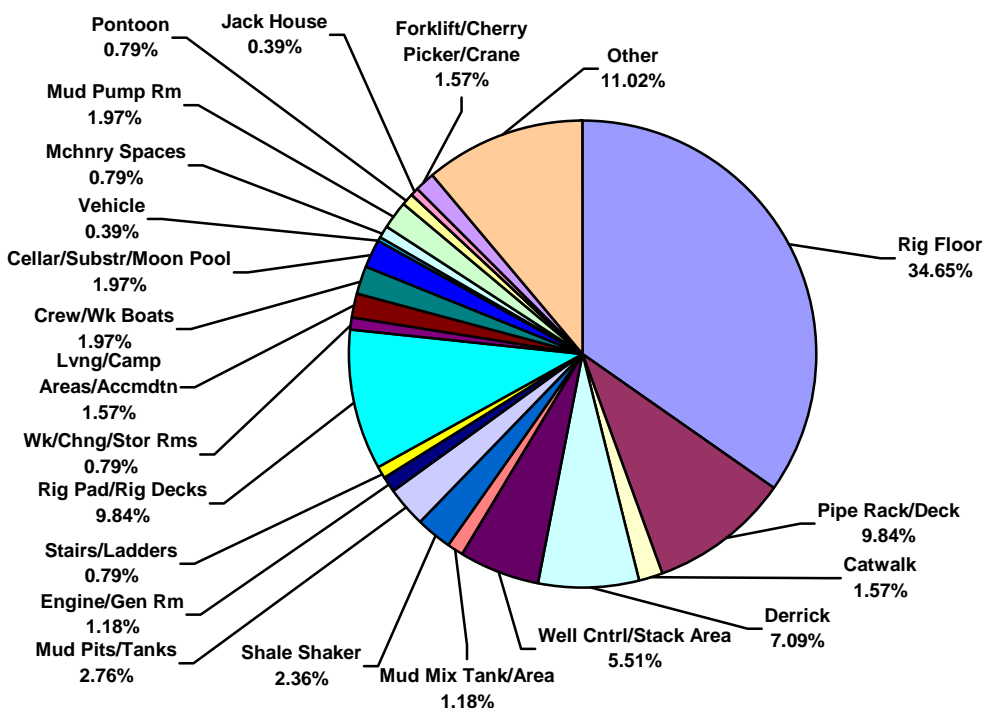




**US Water Total Lost Time Incidents by Location (Chart 13)**  
Based on 52 Incidents

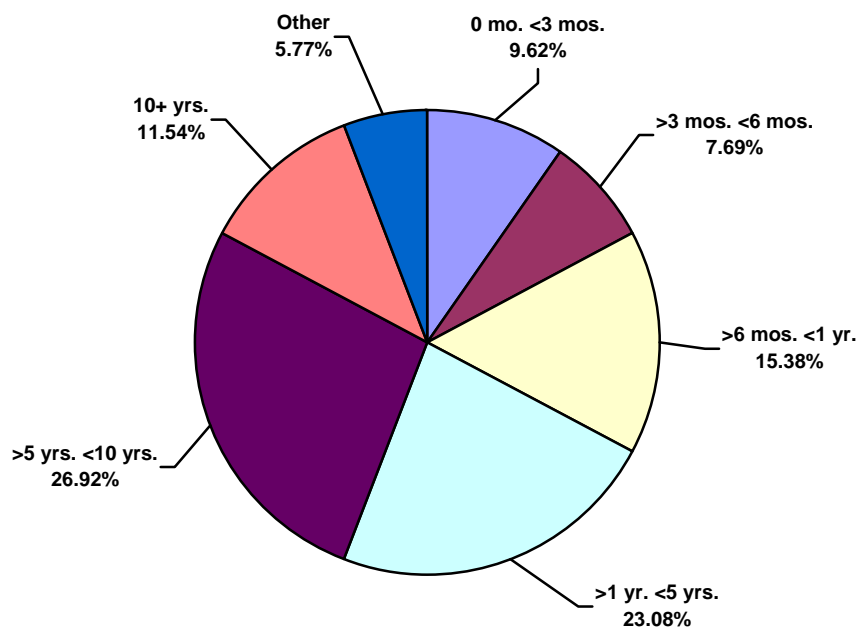


**US Water Total Recordable Incidents by Location (Chart 14)**  
Based on 254 Incidents

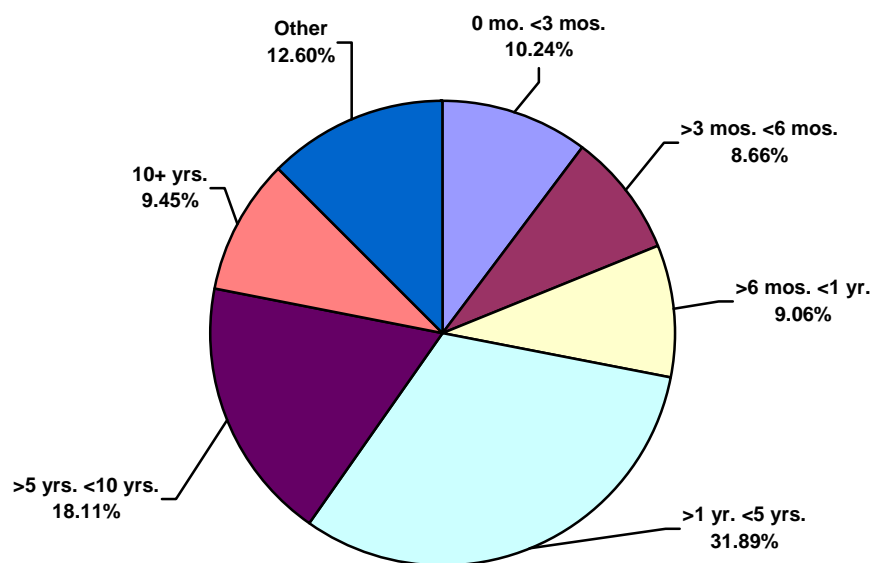




**US Water Total Lost Time Incidents by Time in Service (Chart 15)**  
Based on 52 Incidents

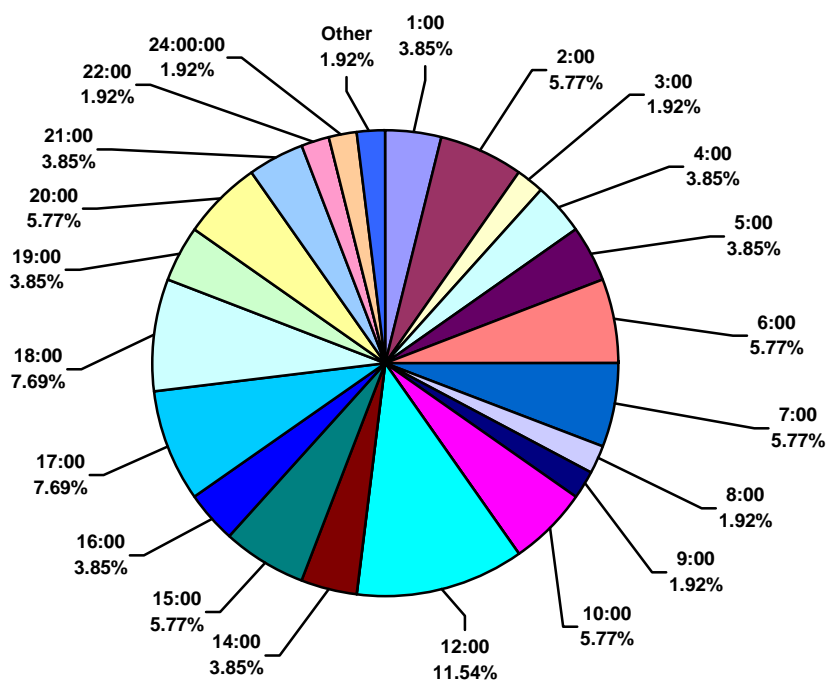


**US Water Total Recordable Incidents by Time in Service (Chart 16)**  
Based on 254 Incidents





**US Water Total Lost Time Incidents by Time of Day (Chart 17)**  
Based on 52 Incidents



**US Water Total Recordable Incidents by Time of Day (Chart 18)**  
Based on 254 Incidents

