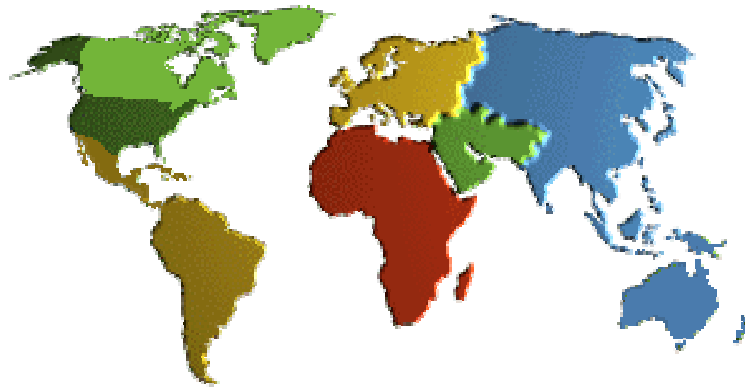




IADC ASP PROGRAM

2002



Summary of Occupational Incidents (US Water Totals)

Issued 1 May 2003



Table of Contents

(Table of Contents is Hyperlinked, Just click on Topic & go)

2002 ASP PROGRAM US WATER TOTALS 3

 IADC 2002 US WATER TOTALS (TABLE 1) 3

US Water Total LTI & Recordable Incidence Rates vs Manhours (Figure 1) 3

IADC 2002 US WATER CHARTS 4

US Water Total Lost Time Incidents by Month (Chart 1) 4

US Water Total Recordable Incidents by Month (Chart 2) 4

US Water Total Lost Time Incidents by Occupation (Chart 3) 5

US Water Total Recordable Incidents by Occupation (Chart 4) 5

US Water Total Lost Time Incidents by Body Part (Chart 5) 6

US Water Total Recordable Incidents by Body Part (Chart 6) 6

US Water Total Lost Time Incidents by Incident Type (Chart 7) 7

US Water Total Recordable Incidents by Incident Type (Chart 8) 7

US Water Total Lost Time Incidents by Equipment (Chart 9) 8

US Water Total Recordable Incidents by Equipment (Chart 10) 8

US Water Total Lost Time Incidents by Operation (Chart 11) 9

US Water Total Recordable Incidents by Operation (Chart 12) 9

US Water Total Lost Time Incidents by Location (Chart 13) 10

US Water Total Recordable Incidents by Location (Chart 14) 10

US Water Total Lost Time Incidents by Time in Service (Chart 15) 11

US Water Total Recordable Incidents by Time in Service (Chart 16) 11

US Water Total Lost Time Incidents by Time of Day (Chart 17) 12

US Water Total Recordable Incidents by Time of Day (Chart 18) 12



2002 ASP Program US Water Totals

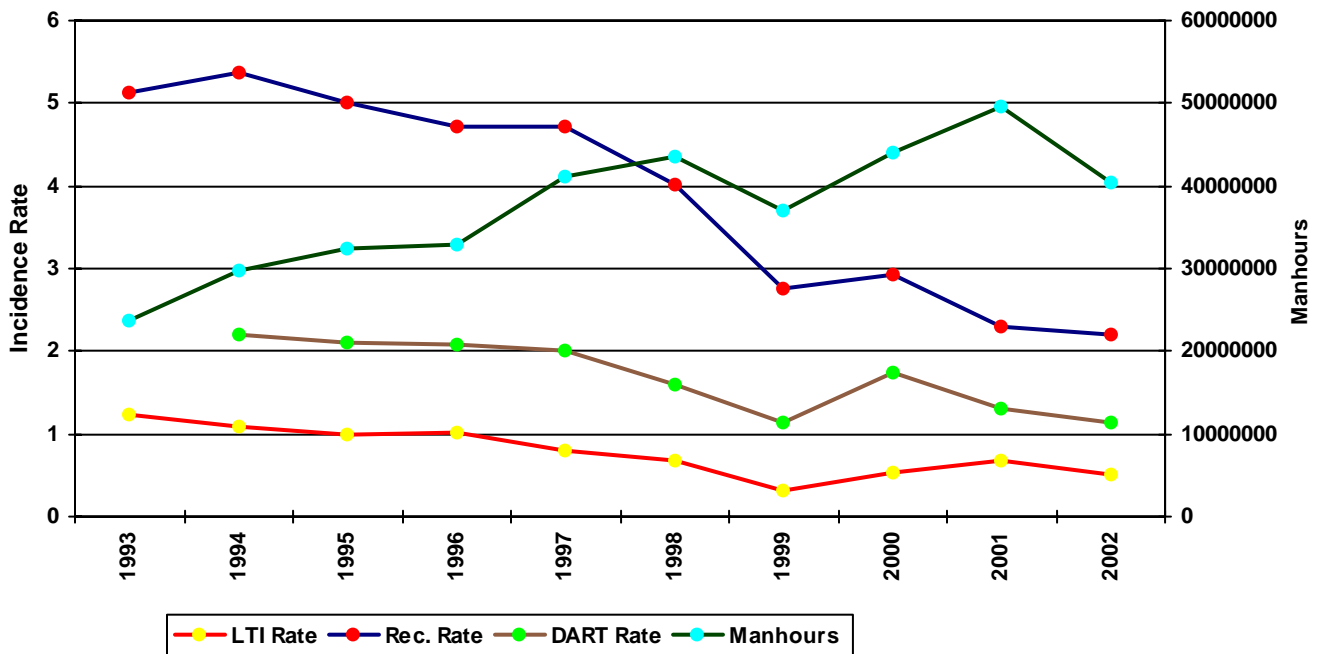
IADC 2002 US Water Totals (Table 1)

	<u>Total</u>
Total Manhours	40,428,840.00
Total Medical Treatment Incidents	217
Total Restricted Work Incidents	128
Total Lost Time Incidents	101
Total Fatalities	1
Total Recordables	447
MTO Incidence Rate	1.07
RWC Incidence Rate	0.63
LTI Incidence Rate	0.50
LTI Frequency Rate	2.52
DART Incidence Rate	1.14
DART Frequency Rate	5.69
Recordable Incidence Rate	2.21
Recordable Frequency Rate	11.06

Companies Reporting: Water - 16

Medical Treatment Incidence Rate = MTOs X 200,000
 Restricted Work Incidence Rate = RWCs X 200,000
 Lost Time Incidence Rate = LTIs X 200,000
 DART Incidence Rate = LTIs + RWC X 200,000
 Recordable Incidence Rate = RCRD X 200,000
 Lost Time Frequency Rate = LTIs X 1,000,000
 DART Frequency Rate = LTIs + RWC X 1,000,000
 Recordable Frequency Rate = RCRD X 1,000,000

US Water Total LTI & Recordable Incidence Rates vs Manhours (Figure 1)

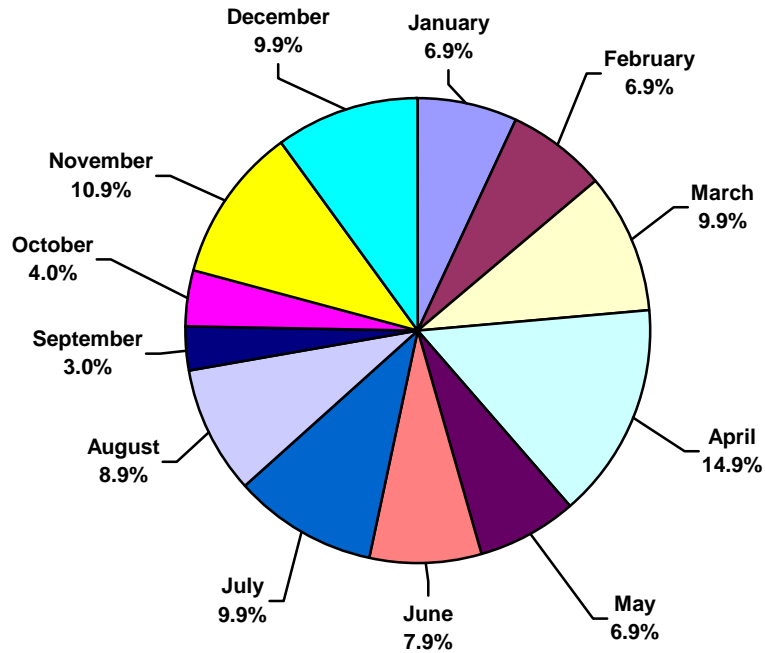




IADC 2002 US Water Charts

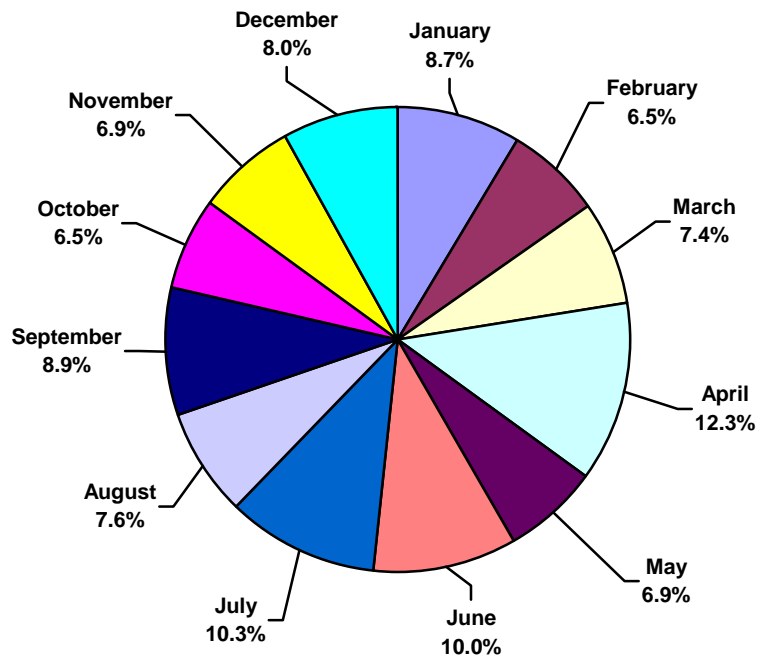
US Water Total Lost Time Incidents by Month (Chart 1)

Based on 101 Incidents



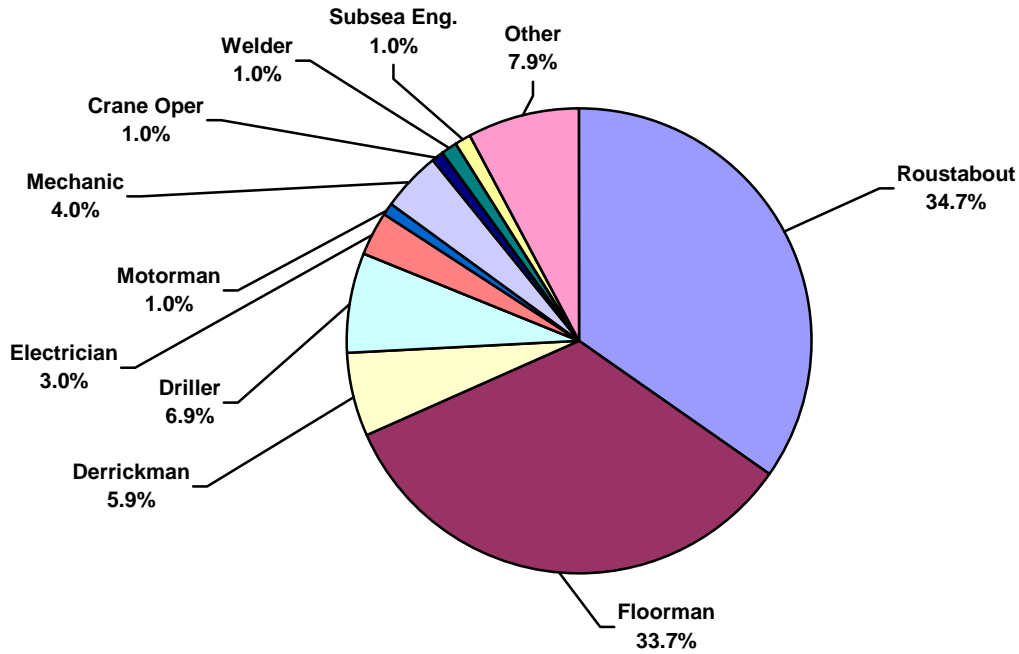
US Water Total Recordable Incidents by Month (Chart 2)

Based on 447 Incidents

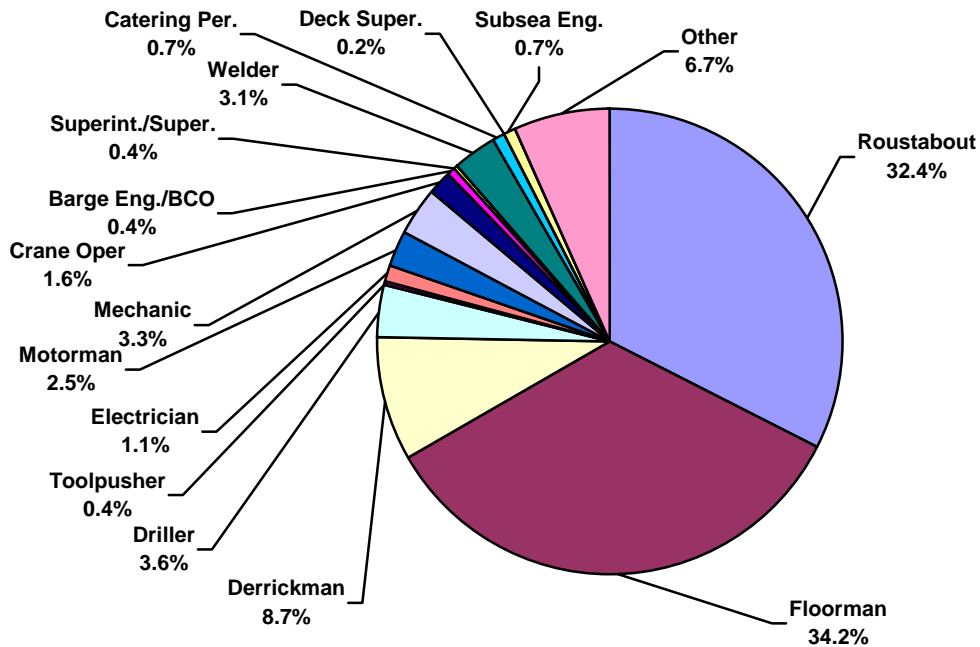




US Water Total Lost Time Incidents by Occupation (Chart 3)
Based on 101 Incidents

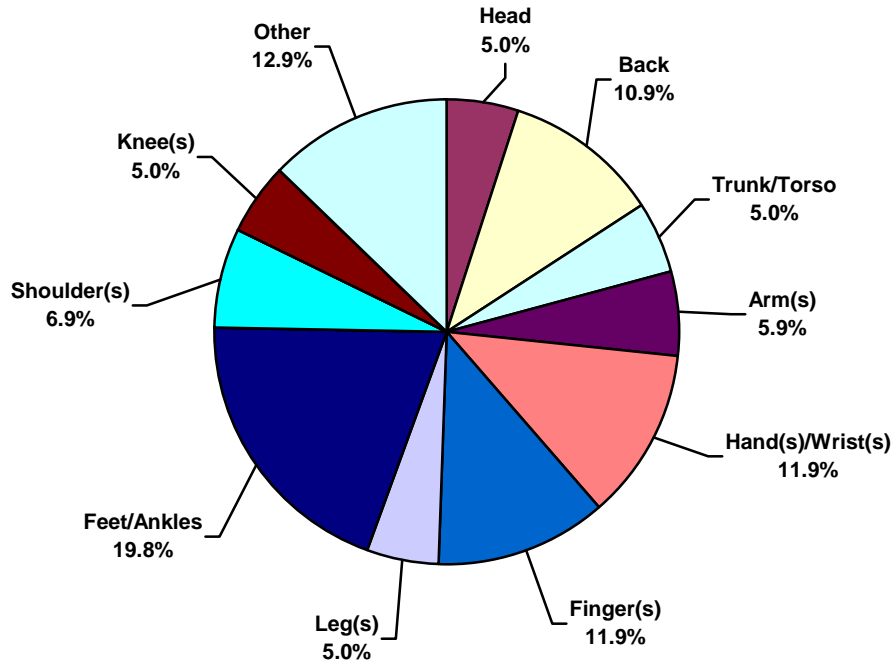


US Water Total Recordable Incidents by Occupation (Chart 4)
Based on 447 Incidents

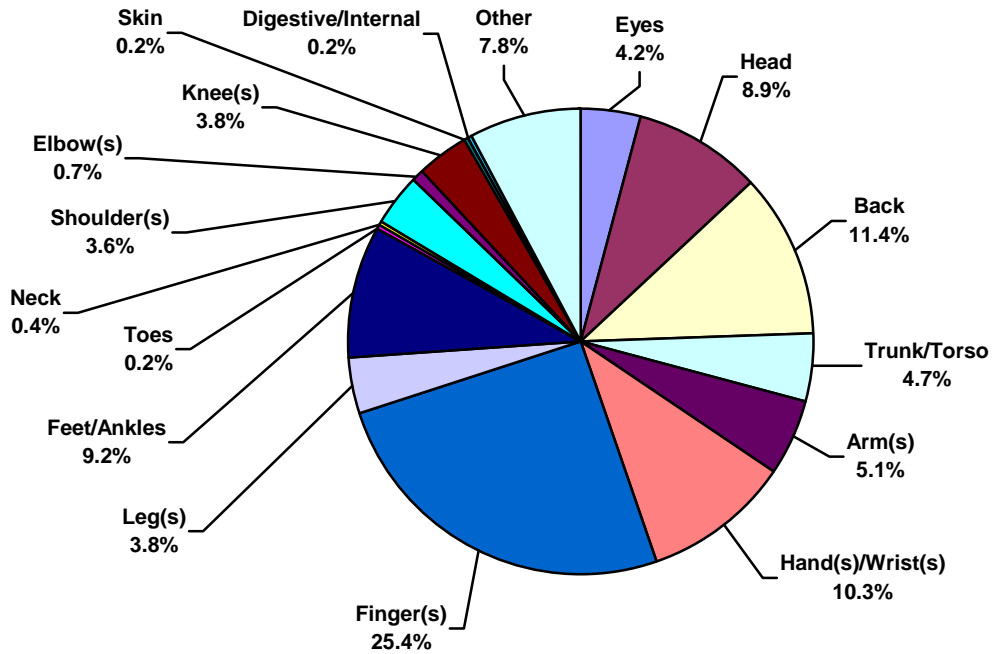




US Water Total Lost Time Incidents by Body Part (Chart 5)
Based on 101 Incidents

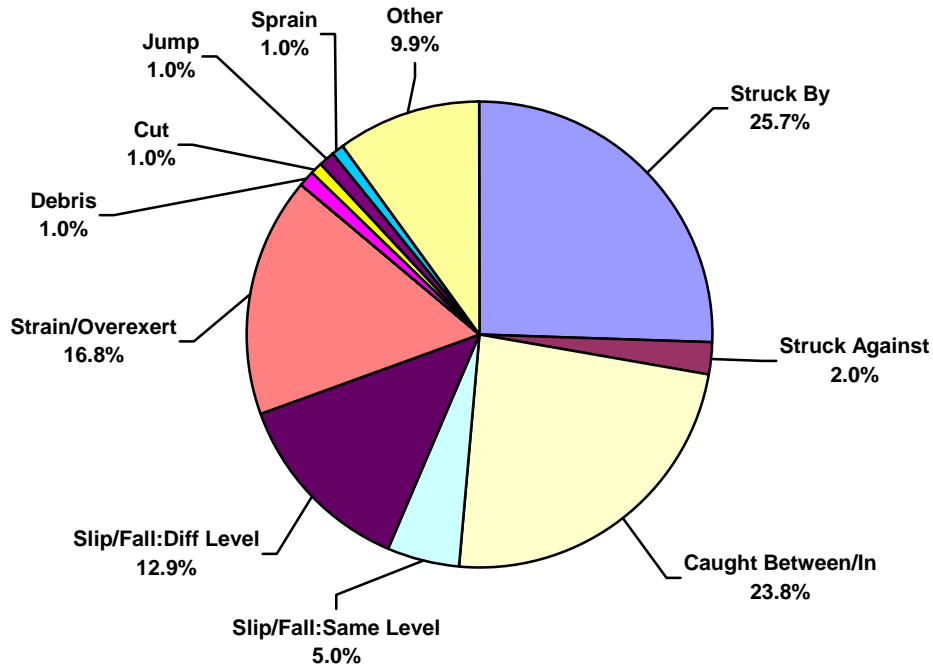


US Water Total Recordable Incidents by Body Part (Chart 6)
Based on 447 Incidents

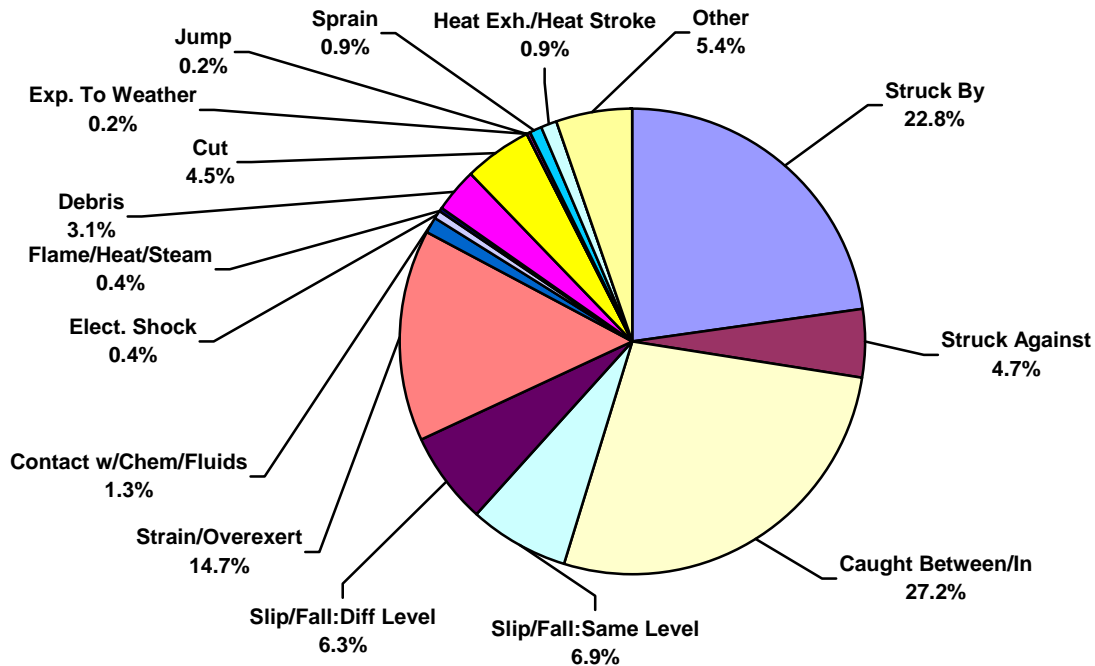




US Water Total Lost Time Incidents by Incident Type (Chart 7)
Based on 101 Incidents

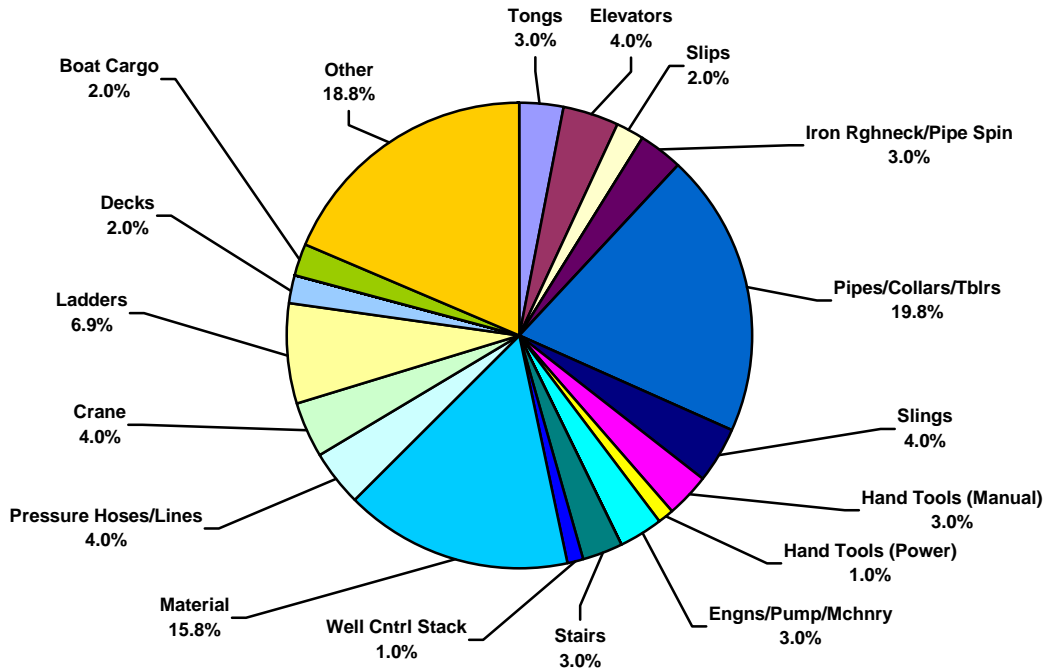


US Water Total Recordable Incidents by Incident Type (Chart 8)
Based on 447 Incidents

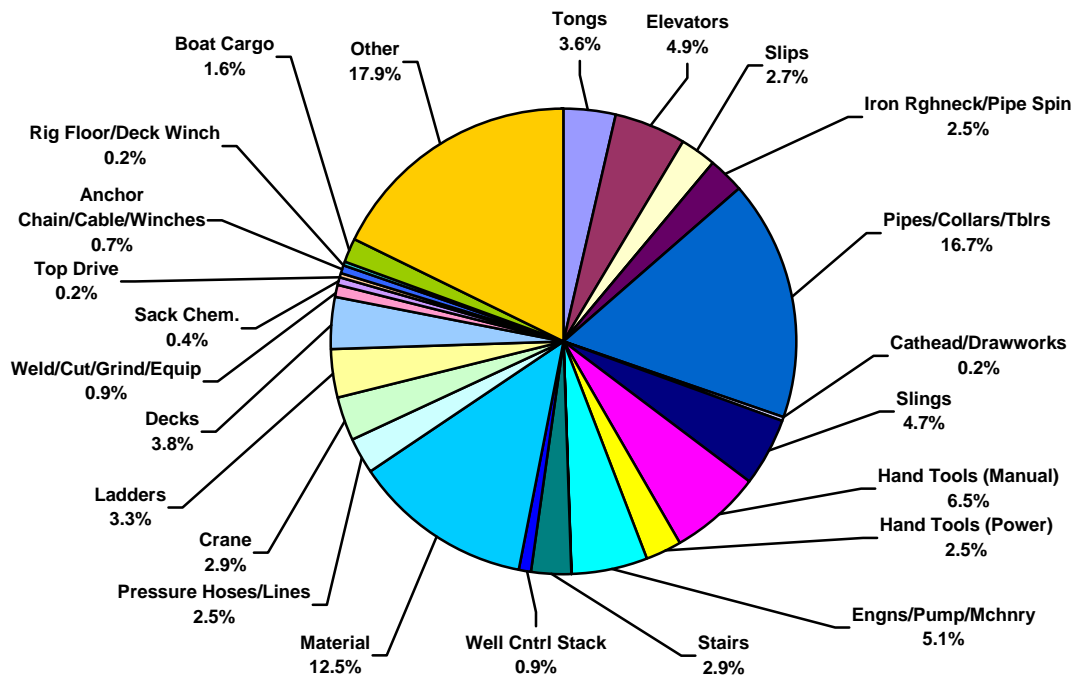




US Water Total Lost Time Incidents by Equipment (Chart 9)
Based on 101 Incidents

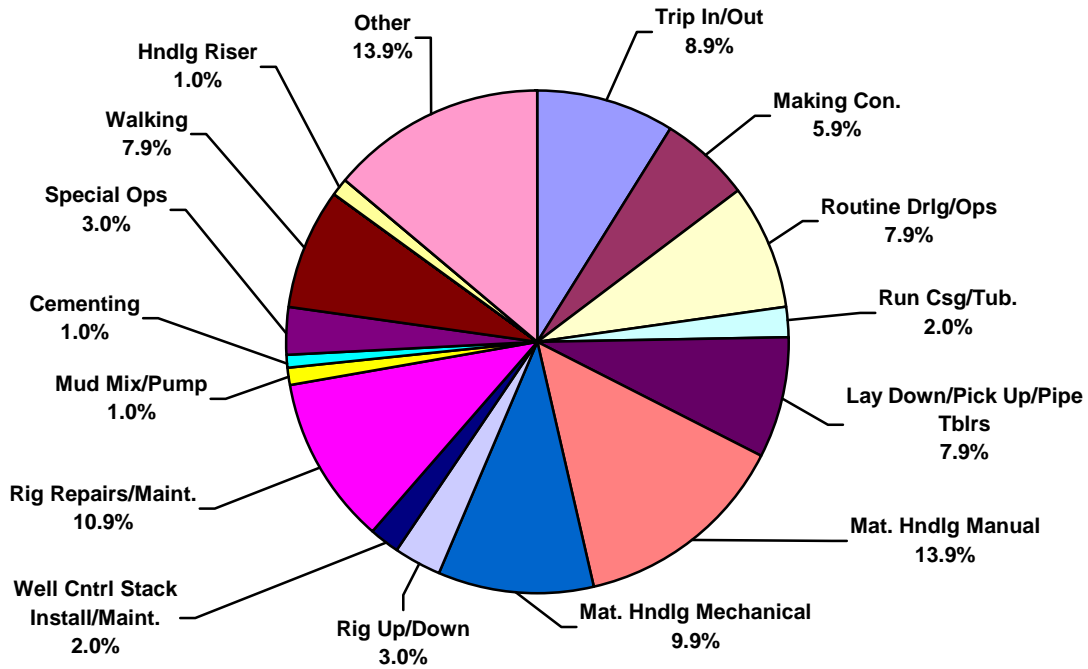


US Water Total Recordable Incidents by Equipment (Chart 10)
Based on 447 Incidents

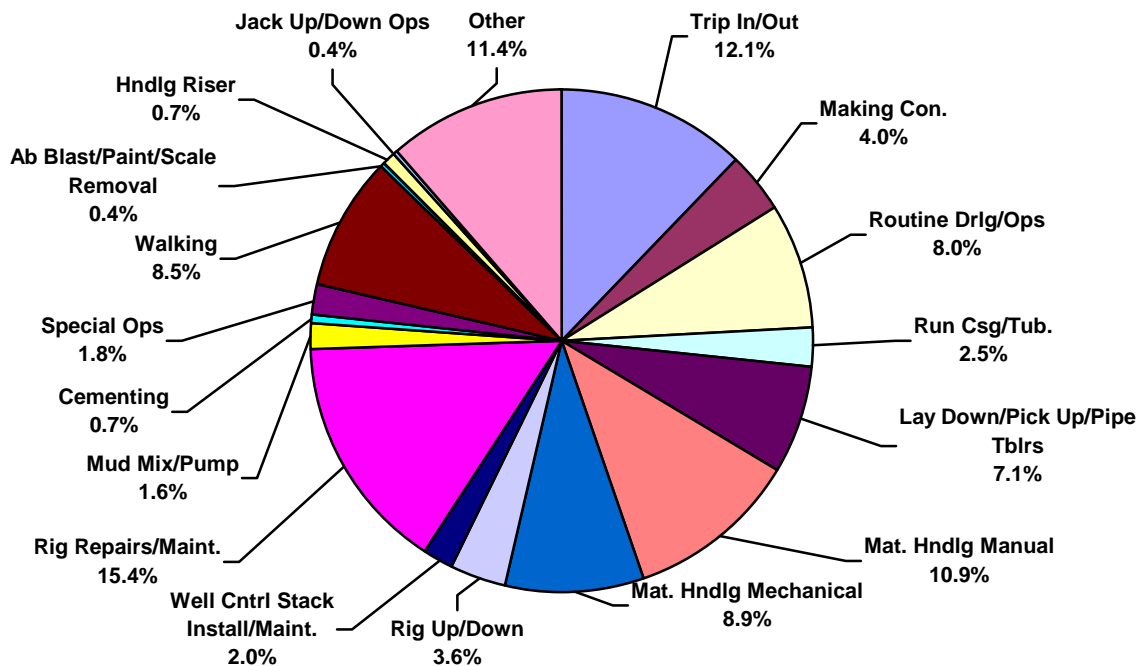




US Water Total Lost Time Incidents by Operation (Chart 11)
Based on 101 Incidents

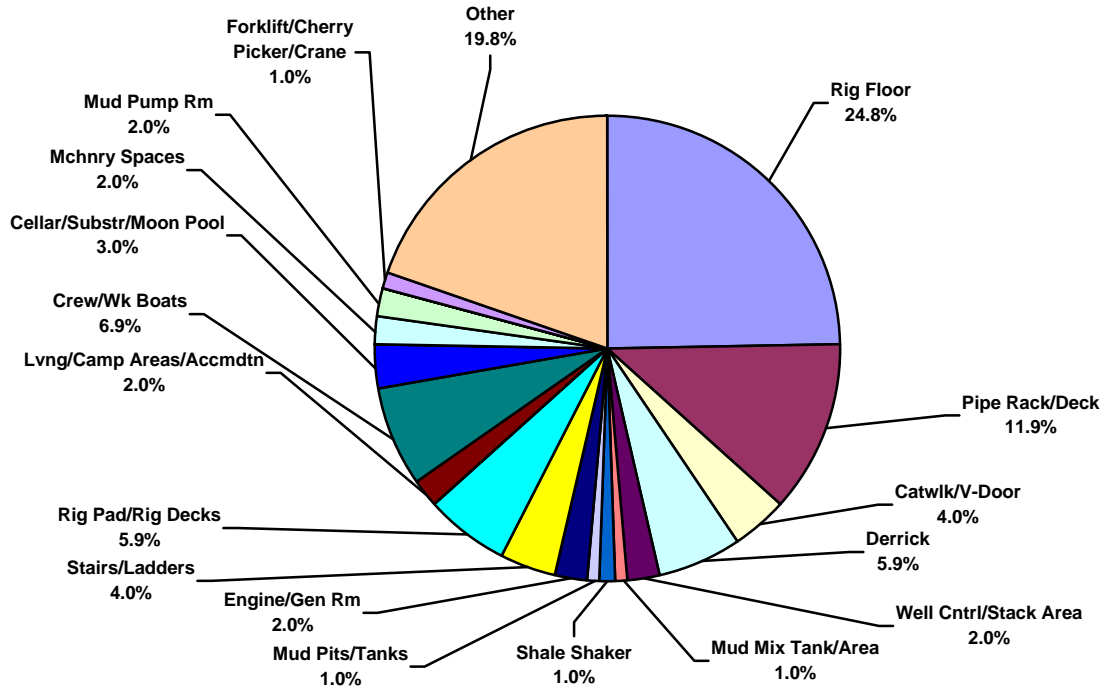


US Water Total Recordable Incidents by Operation (Chart 12)
Based on 447 Incidents

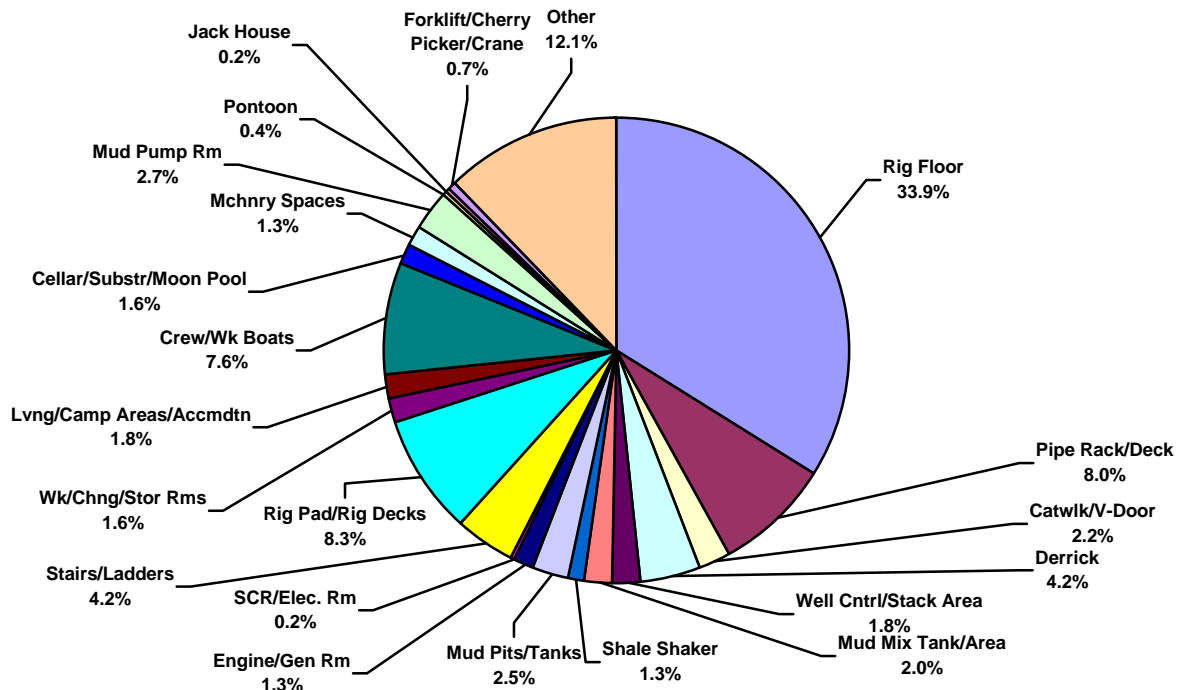




US Water Total Lost Time Incidents by Location (Chart 13)
Based on 101 Incidents

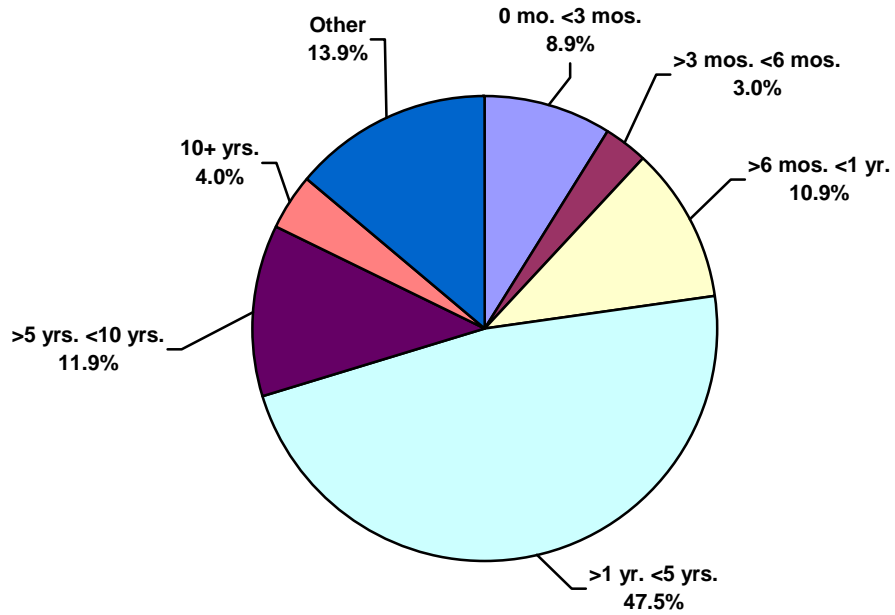


US Water Total Recordable Incidents by Location (Chart 14)
Based on 447 Incidents

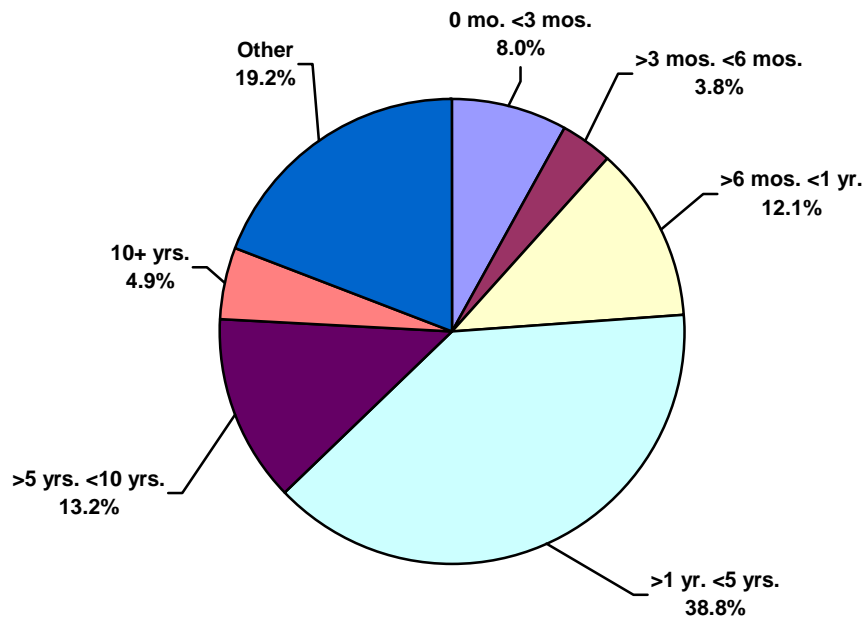




US Water Total Lost Time Incidents by Time in Service (Chart 15)
Based on 101 Incidents

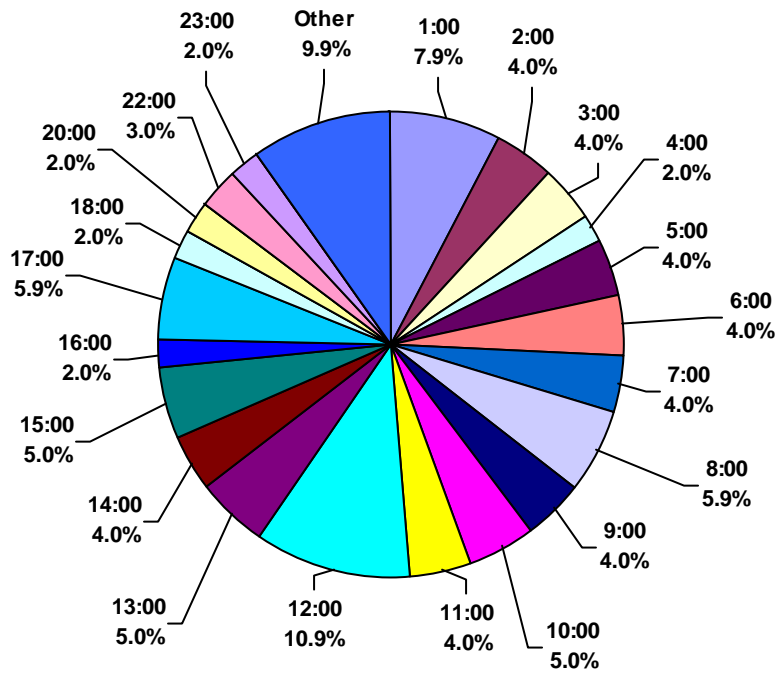


US Water Total Recordable Incidents by Time in Service (Chart 16)
Based on 447 Incidents





US Water Total Lost Time Incidents by Time of Day (Chart 17)
Based on 101 Incidents



US Water Total Recordable Incidents by Time of Day (Chart 18)
Based on 447 Incidents

