



IADC ASP PROGRAM

2002



Summary of Occupational Incidents (US Land Totals)

Issued 1 May 2003



Table of Contents

(Table of Contents is Hyperlinked, Just click on Topic & go)

2002 ASP PROGRAM US LAND TOTALS	3
IADC 2002 US LAND TOTALS (TABLE 1)	3
<i>US Land Total Incidence Rates vs Manhours (Figure 1)</i>	<i>3</i>
IADC 2002 US LAND CHART	4
<i>US Land Total Lost Time Incidents by Month (Chart 1)</i>	<i>4</i>
<i>US Land Total Recordable Incidents by Month (Chart 2)</i>	<i>4</i>
<i>US Land Total Lost Time Incidents by Occupation (Chart 3)</i>	<i>5</i>
<i>US Land Total Recordable Incidents by Occupation (Chart 4)</i>	<i>5</i>
<i>US Land Total Lost Time Incidents by Body Part (Chart 5)</i>	<i>6</i>
<i>US Land Total Recordable Incidents by Body Part (Chart 6)</i>	<i>6</i>
<i>US Land Total Lost Time Incidents by Incident Type (Chart 7)</i>	<i>7</i>
<i>US Land Total Recordable Incidents by Incident Type (Chart 8)</i>	<i>7</i>
<i>US Land Total Lost Time Incidents by Equipment (Chart 9)</i>	<i>8</i>
<i>US Land Total Recordable Incidents by Equipment (Chart 10)</i>	<i>8</i>
<i>US Land Total Lost Time Incidents by Operation (Chart 11)</i>	<i>9</i>
<i>US Land Total Recordable Incidents by Operation (Chart 12)</i>	<i>9</i>
<i>US Land Total Lost Time Incidents by Location (Chart 13)</i>	<i>10</i>
<i>US Land Total Recordable Incidents by Location (Chart 14)</i>	<i>10</i>
<i>US Land Total Lost Time Incidents by Time in Service (Chart 15)</i>	<i>11</i>
<i>US Land Total Recordable Incidents by Time in Service (Chart 16)</i>	<i>11</i>
<i>US Land Total Lost Time Incidents by Time of Day (Chart 17)</i>	<i>12</i>
<i>US Land Total Recordable Incidents by Time of Day (Chart 18)</i>	<i>12</i>



2002 ASP Program US Land Totals

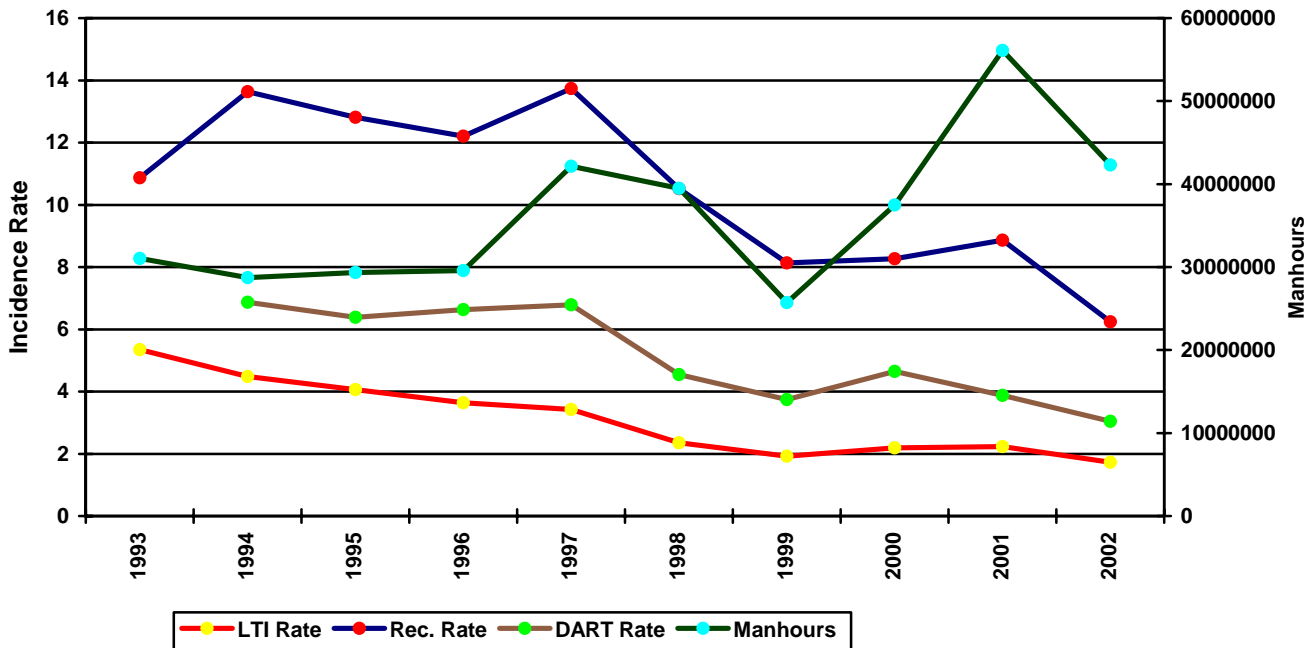
IADC 2002 US Land Totals (Table 1)

	<u>Total</u>
Total Manhours	42,291,515.00
Total Medical Treatment Incidents	677
Total Restricted Work Incidents	278
Total Lost Time Incidents	356
Total Fatalities	9
Total Recordables	1320
MTO Incidence Rate	3.20
RWC Incidence Rate	1.31
LTI Incidence Rate	1.73
LTI Frequency Rate	8.63
DART Incidence Rate	3.04
DART Frequency Rate	15.20
Recordable Incidence Rate	6.24
Recordable Frequency Rate	31.21

Companies Reporting: Land – 55

Medical Treatment Incidence Rate = MTOs X 200,000
 Restricted Work Incidence Rate = RWCs X 200,000
 Lost Time Incidence Rate = LTIs X 200,000
 DART Incidence Rate = LTIs + RWC X 200,000
 Recordable Incidence Rate = RCRD X 200,000
 Lost Time Frequency Rate = LTIs X 1,000,000
 DART Frequency Rate = LTIs + RWC X 1,000,000
 Recordable Frequency Rate = RCRD X 1,000,000

US Land Total Incidence Rates vs Manhours (Figure 1)

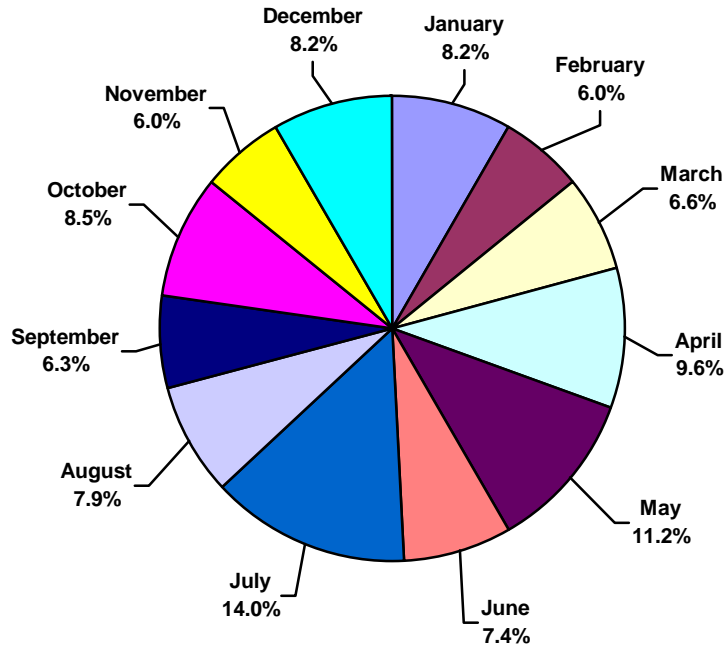




IADC 2002 US Land Chart

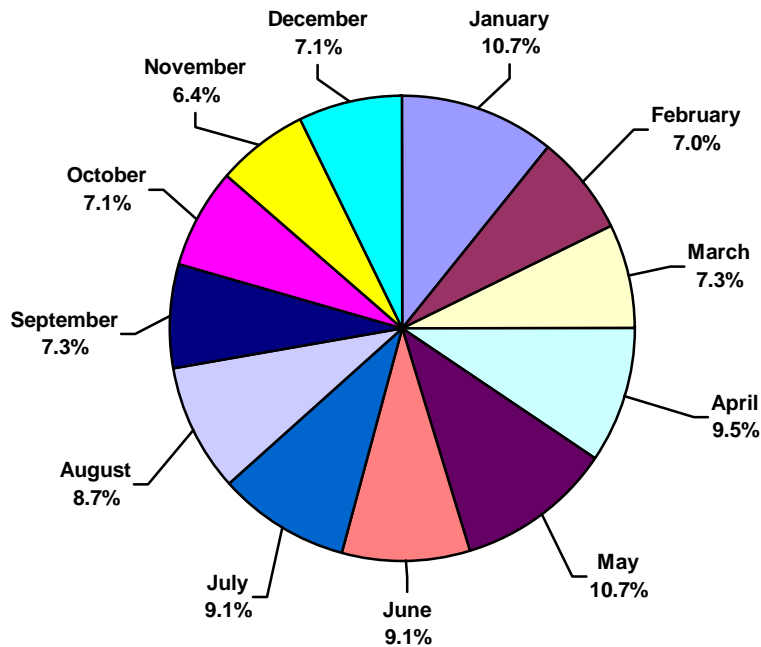
US Land Total Lost Time Incidents by Month (Chart 1)

Based on 356 Incidents



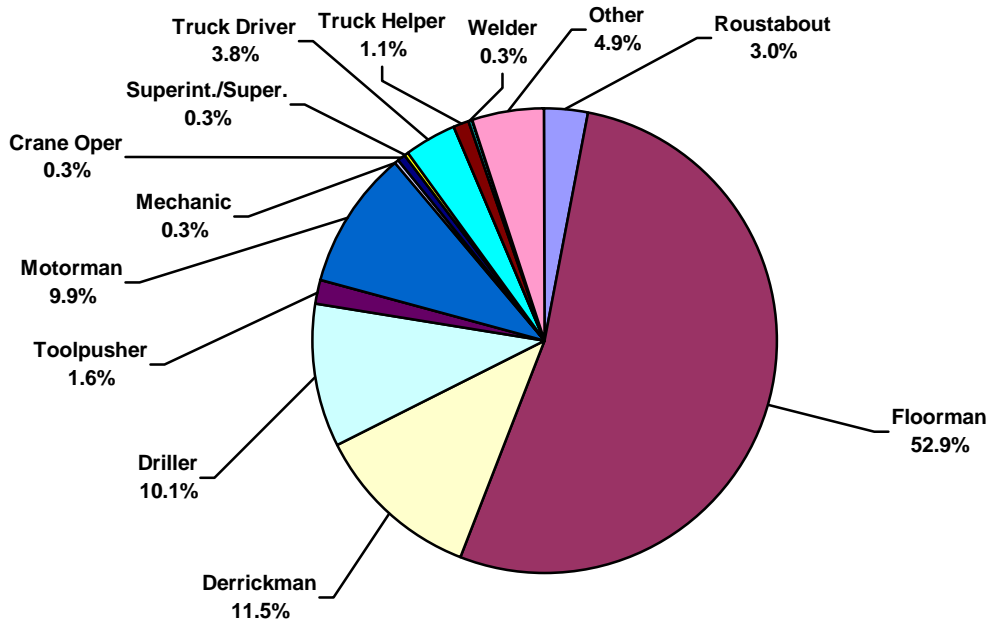
US Land Total Recordable Incidents by Month (Chart 2)

Based on 1320 Incidents

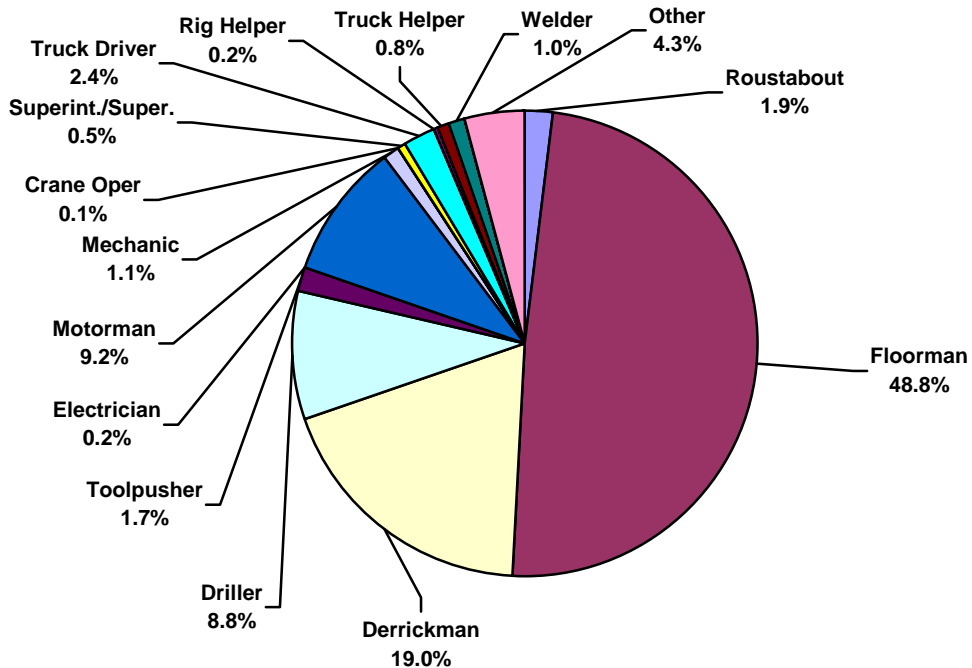




US Land Total Lost Time Incidents by Occupation (Chart 3)
Based on 356 Incidents

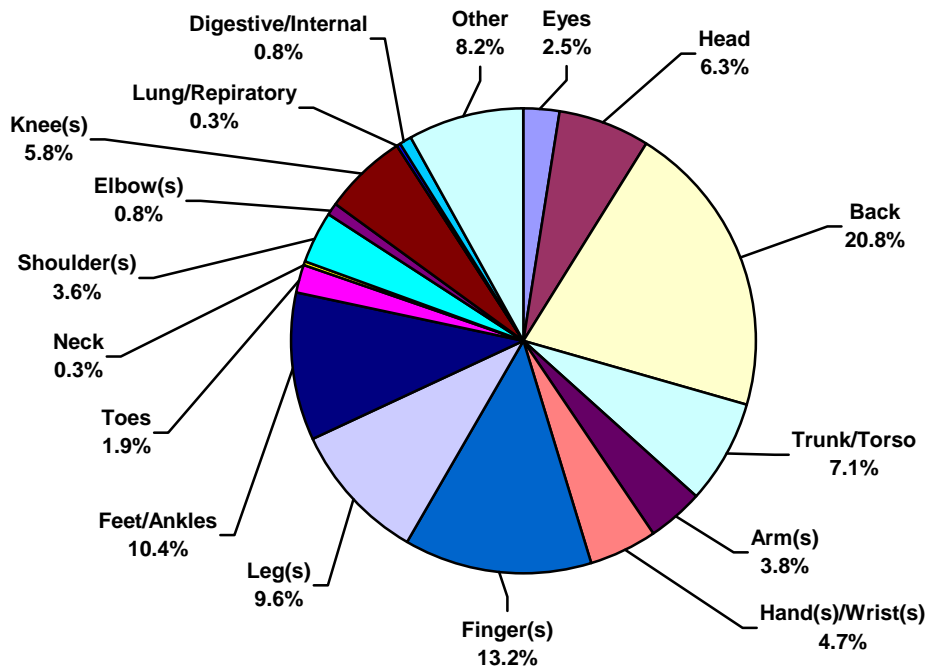


US Land Total Recordable Incidents by Occupation (Chart 4)
Based on 1320 Incidents

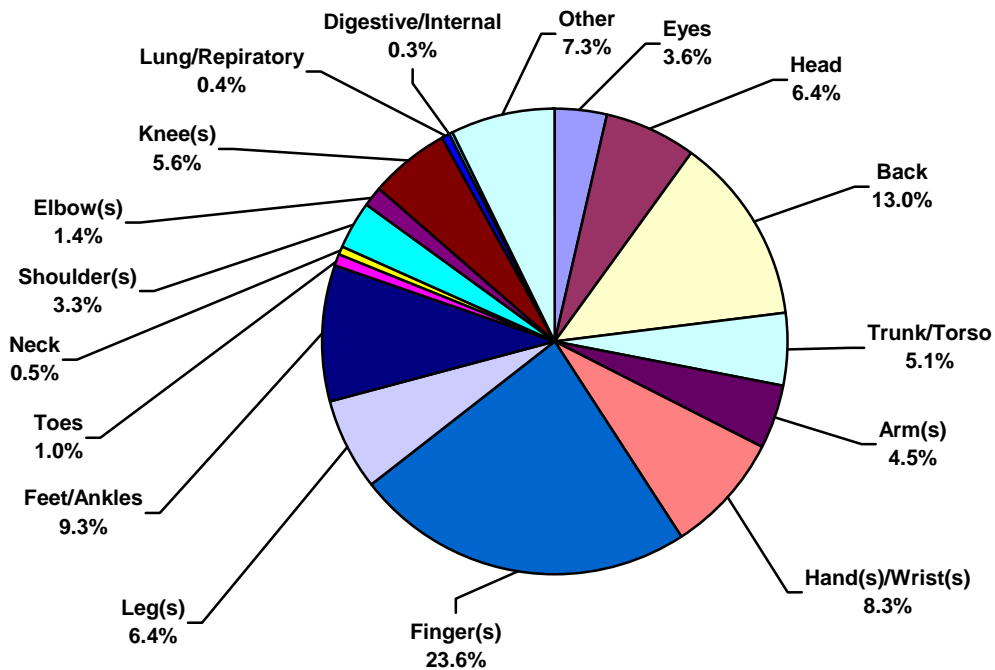




US Land Total Lost Time Incidents by Body Part (Chart 5)
Based on 356 Incidents

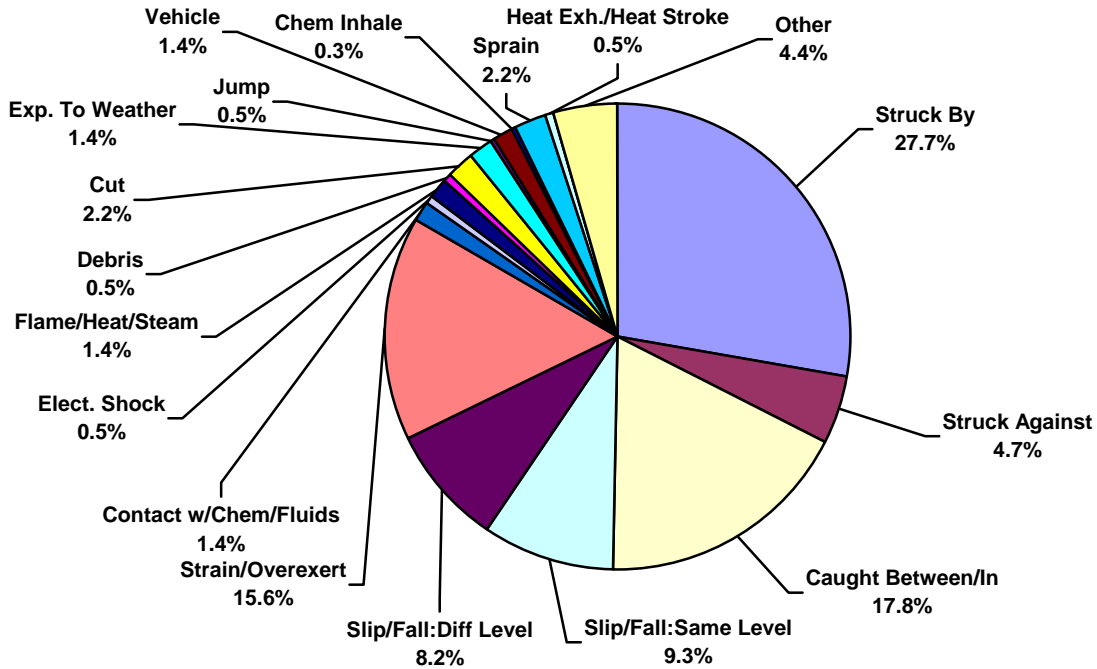


US Land Total Recordable Incidents by Body Part (Chart 6)
Based on 1320 Incidents

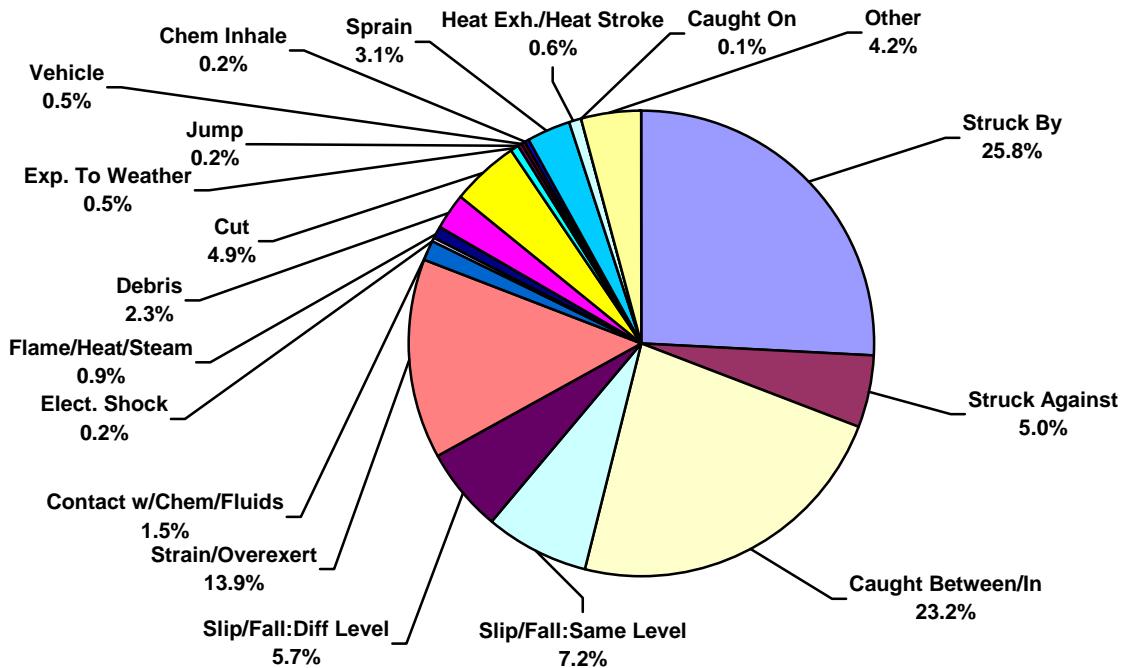




US Land Total Lost Time Incidents by Incident Type (Chart 7)
Based on 356 Incidents

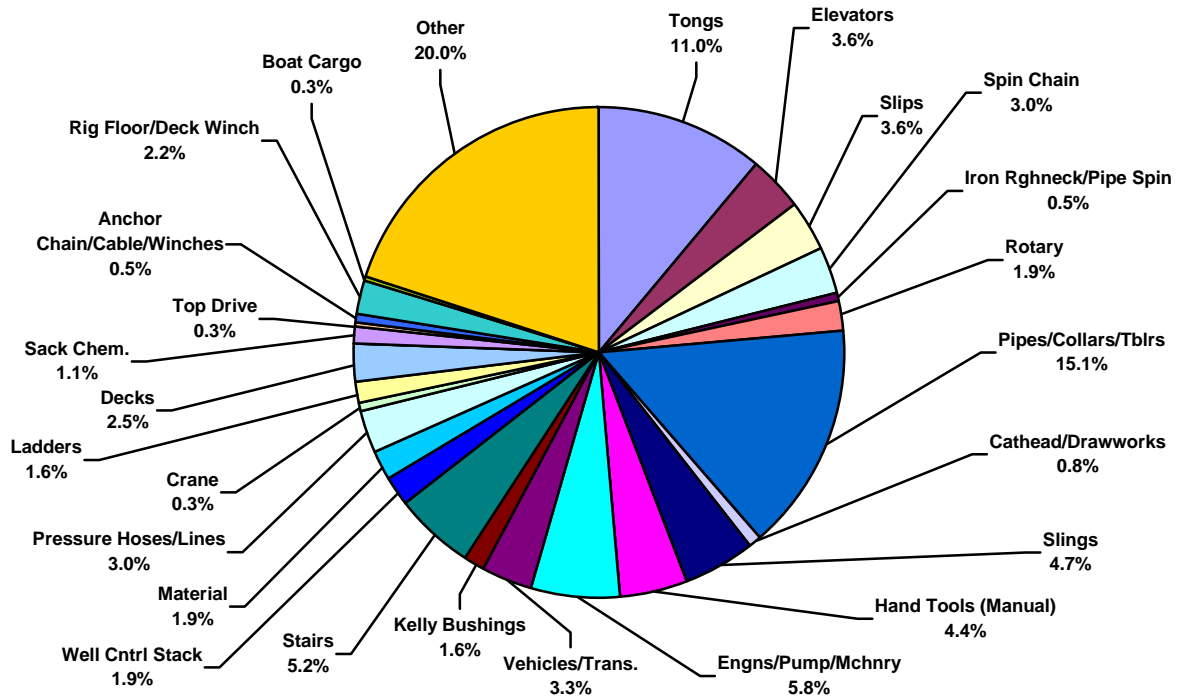


US Land Total Recordable Incidents by Incident Type (Chart 8)
Based on 1320 Incidents

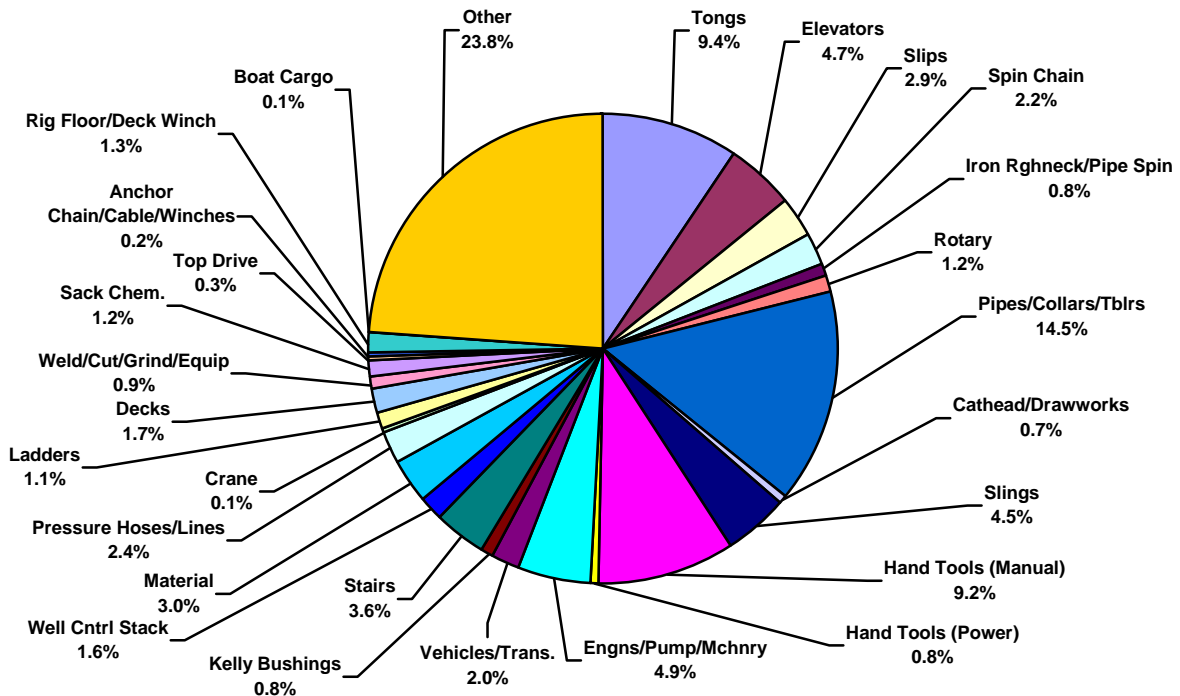




US Land Total Lost Time Incidents by Equipment (Chart 9)
Based on 356 Incidents

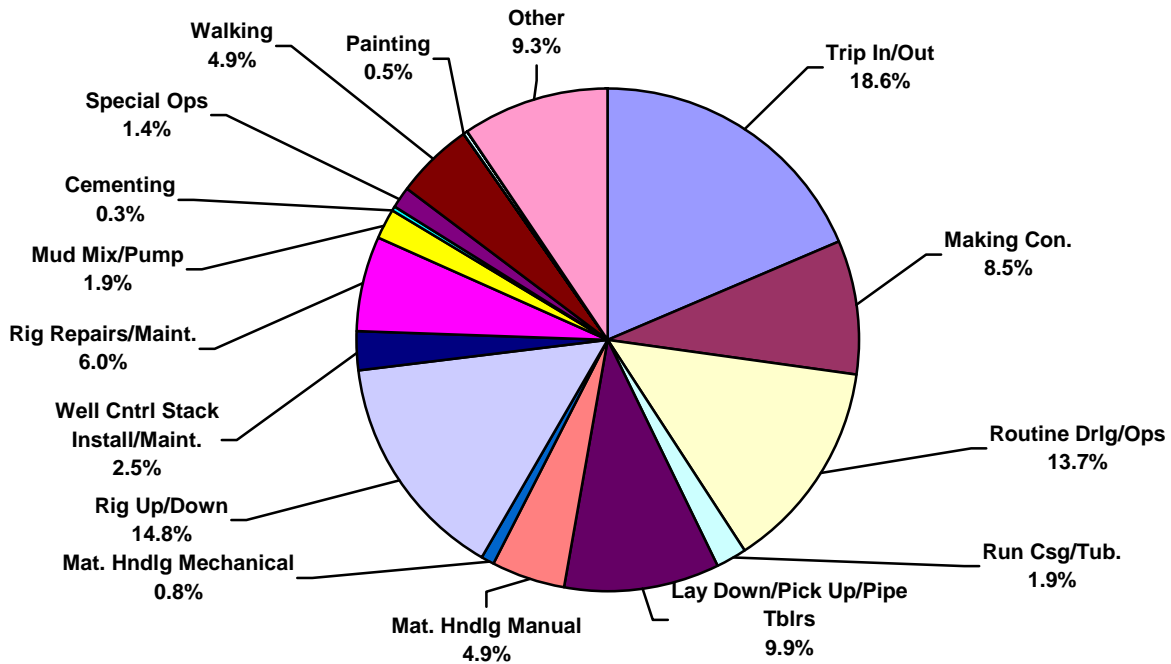


US Land Total Recordable Incidents by Equipment (Chart 10)
Based on 1320 Incidents

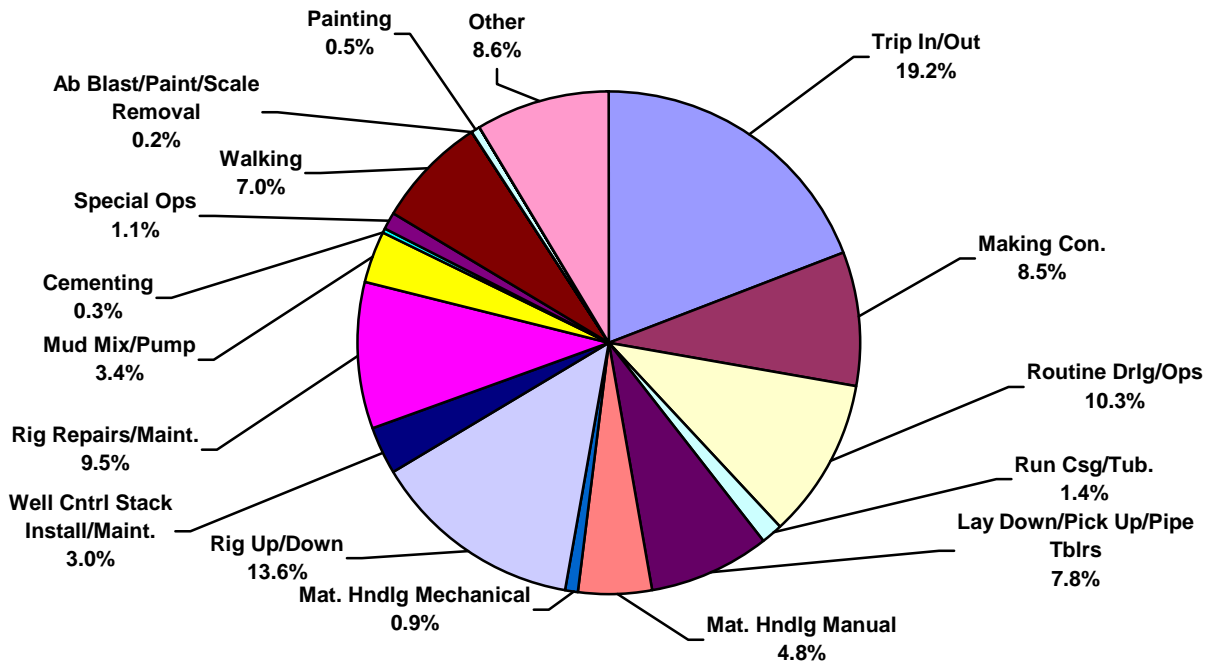




US Land Total Lost Time Incidents by Operation (Chart 11)
Based on 356 Incidents

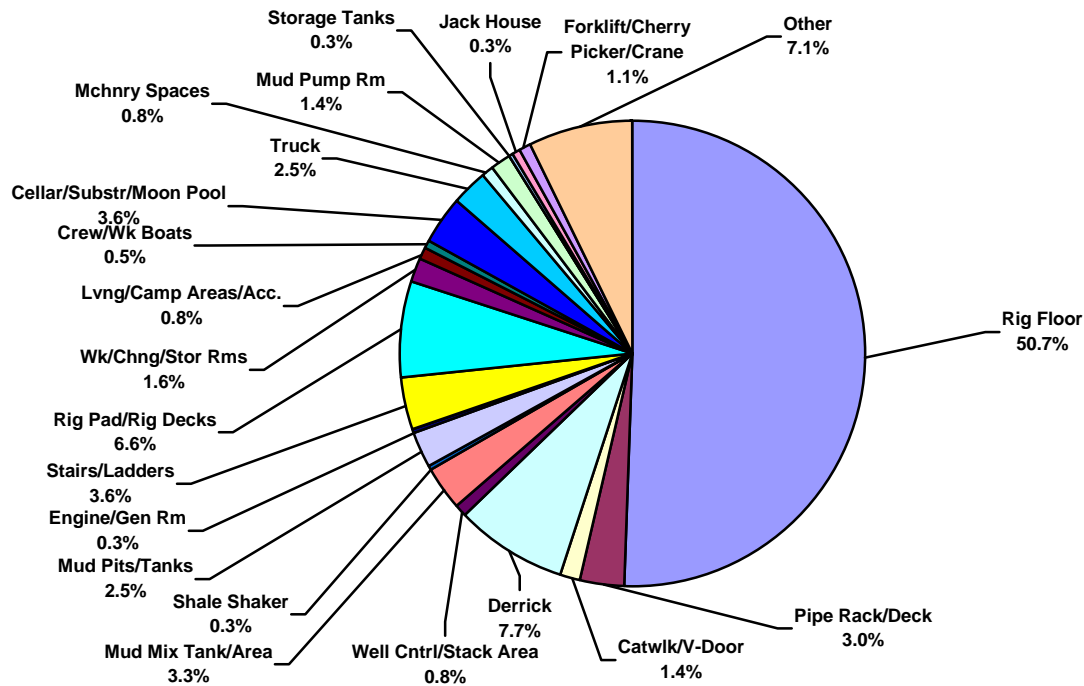


US Land Total Recordable Incidents by Operation (Chart 12)
Based on 1320 Incidents

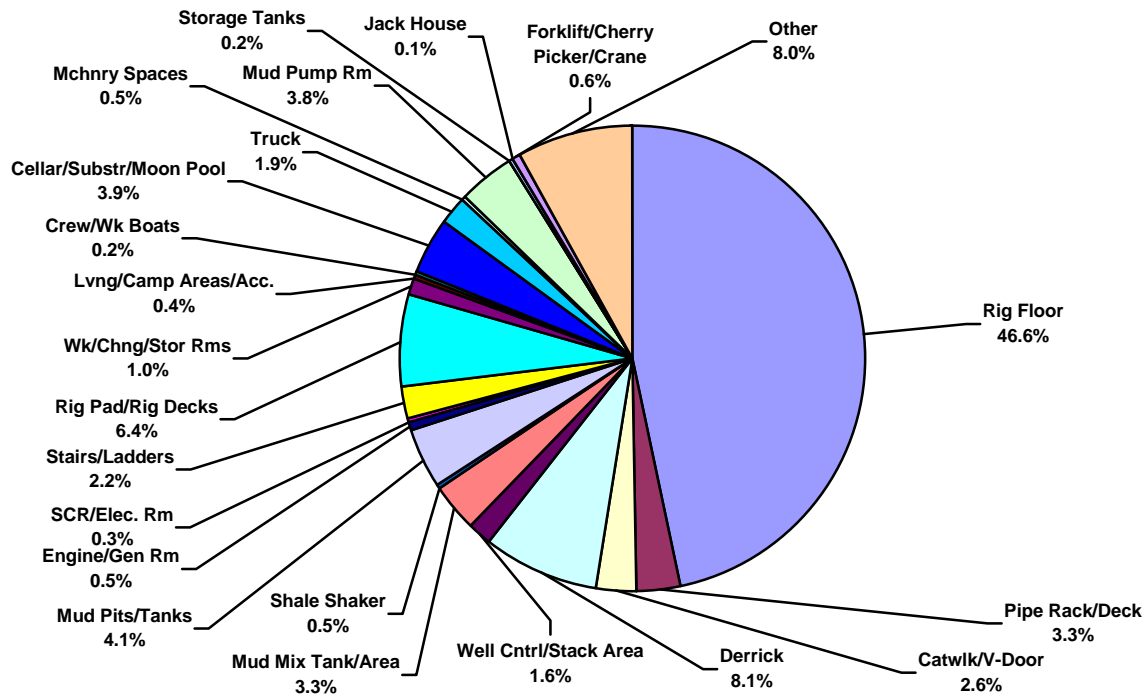




US Land Total Lost Time Incidents by Location (Chart 13)
Based on 356 Incidents

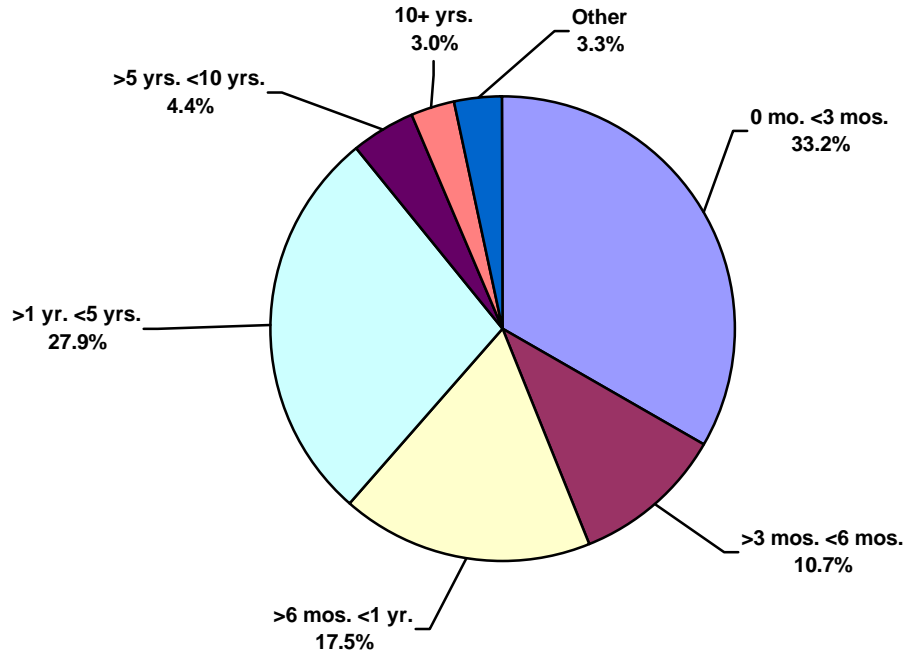


US Land Total Recordable Incidents by Location (Chart 14)
Based on 1320 Incidents

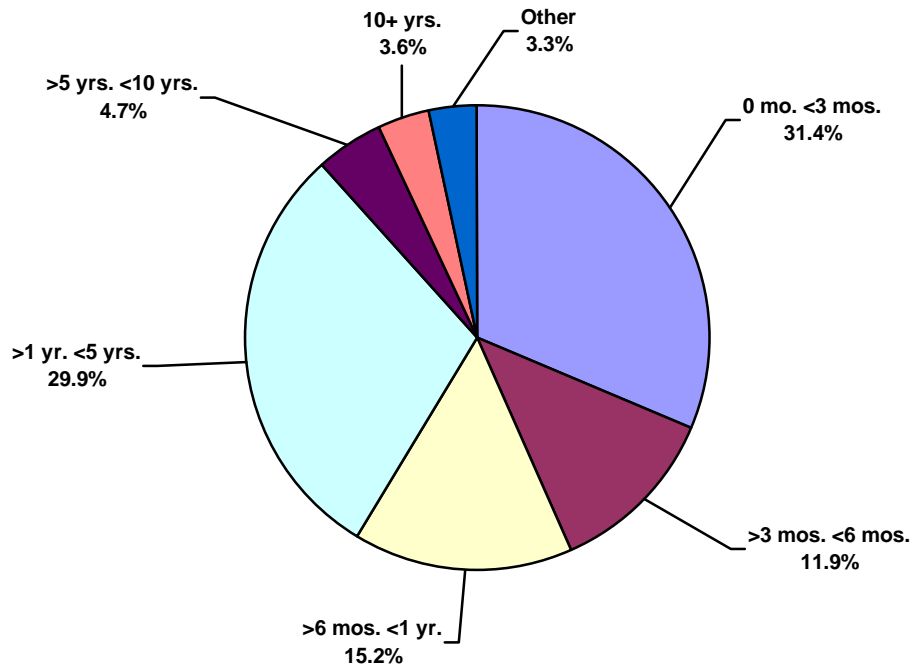




US Land Total Lost Time Incidents by Time in Service (Chart 15)
Based on 356 Incidents

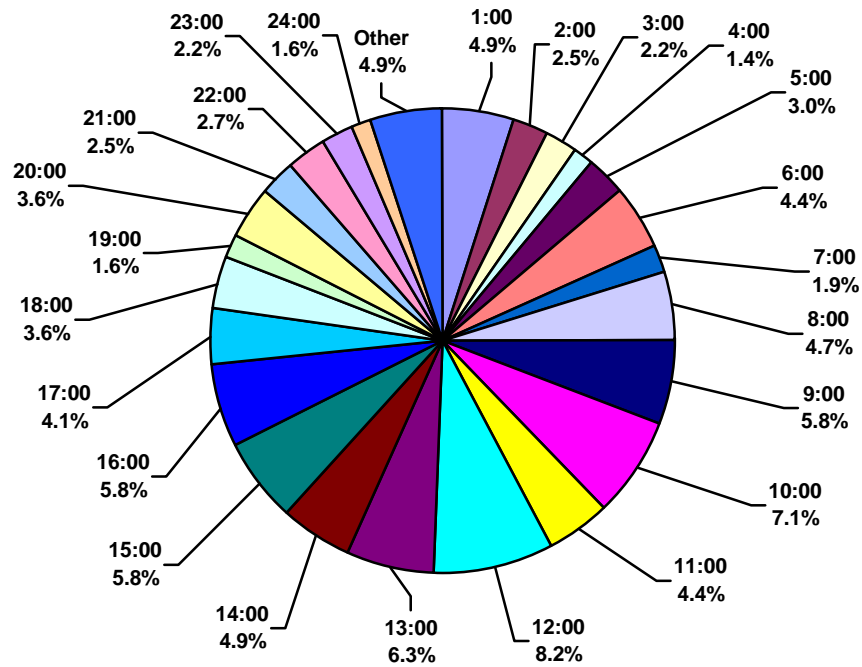


US Land Total Recordable Incidents by Time in Service (Chart 16)
Based on 1320 Incidents





US Land Total Lost Time Incidents by Time of Day (Chart 17)
Based on 356 Incidents



US Land Total Recordable Incidents by Time of Day (Chart 18)
Based on 1320 Incidents

