



IADC ASP PROGRAM

2002



Summary of Occupational Incidents (Middle East Water Totals)

Issued 1 May 2003



Table of Contents

(Table of Contents is Hyperlinked, Just click on Topic & go)

2002 ASP PROGRAM MIDDLE EAST WATER TOTALS.....	3
IADC 2002 MIDDLE EAST WATER TOTALS (TABLE 1)	3
<i>Middle East Water Total Incidence Rates vs Manhours (Figure 1).....</i>	<i>3</i>
IADC 2002 MIDDLE EAST WATER CHARTS	4
<i>Middle East Water Total Lost Time Incidents by Month (Chart 1)</i>	<i>4</i>
<i>Middle East Water Total Recordable Incidents by Month (Chart 2).....</i>	<i>4</i>
<i>Middle East Water Total Lost Time Incidents by Occupation (Chart 3)</i>	<i>5</i>
<i>Middle East Water Total Recordable Incidents by Occupation (Chart 4).....</i>	<i>5</i>
<i>Middle East Water Total Lost Time Incidents by Body Part (Chart 5)</i>	<i>6</i>
<i>Middle East Water Total Recordable Incidents by Body Part (Chart 6).....</i>	<i>6</i>
<i>Middle East Water Total Lost Time Incidents by Incident Type (Chart 7).....</i>	<i>7</i>
<i>Middle East Water Total Recordable Incidents by Incident Type (Chart 8)</i>	<i>7</i>
<i>Middle East Water Total Lost Time Incidents by Equipment (Chart 9)</i>	<i>8</i>
<i>Middle East Water Total Recordable Incidents by Equipment (Chart 10)</i>	<i>8</i>
<i>Middle East Water Total Lost Time Incidents by Operation (Chart 11).....</i>	<i>9</i>
<i>Middle East Water Total Recordable Incidents by Operation (Chart 12)</i>	<i>9</i>
<i>Middle East Water Total Lost Time Incidents by Location (Chart 13)</i>	<i>10</i>
<i>Middle East Water Total Recordable Incidents by Location (Chart 14).....</i>	<i>10</i>
<i>Middle East Water Total Lost Time Incidents by Time in Service (Chart 15).....</i>	<i>11</i>
<i>Middle East Water Total Recordable Incidents by Time in Service (Chart 16).....</i>	<i>11</i>
<i>Middle East Water Total Lost Time Incidents by Time of Day (Chart 17).....</i>	<i>12</i>
<i>Middle East Water Total Recordable Incidents by Time of Day (Chart 18).....</i>	<i>12</i>



2002 ASP Program Middle East Water Totals

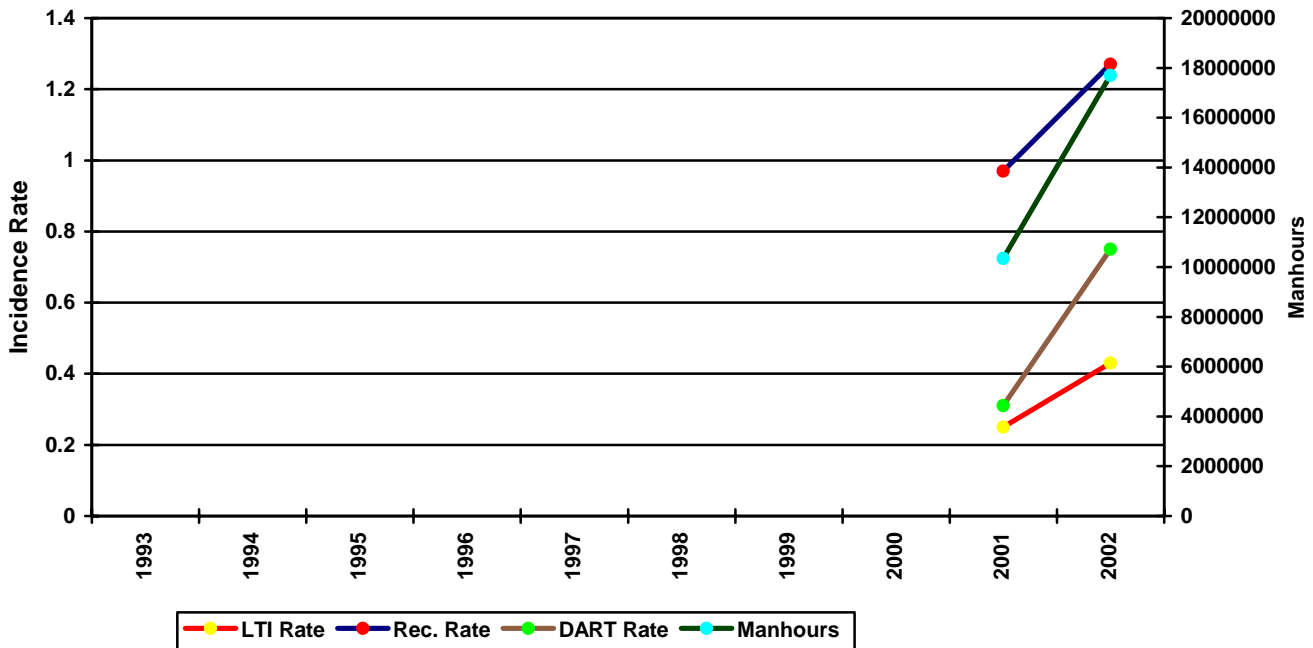
IADC 2002 Middle East Water Totals (Table 1)

	<u>Total</u>
Total Manhours	17,701,580.00
Total Medical Treatment Incidents	46
Total Restricted Work Incidents	28
Total Lost Time Incidents	38
Total Fatalities	0
Total Recordables	112
MTO Incidence Rate	0.52
RWC Incidence Rate	0.32
LTI Incidence Rate	0.43
LTI Frequency Rate	2.15
DART Incidence Rate	0.75
DART Frequency Rate	3.73
Recordable Incidence Rate	1.27
Recordable Frequency Rate	6.33

Companies Reporting: Water - 16

Medical Treatment Incidence Rate = MTOs X 200,000
 Restricted Work Incidence Rate = RWCs X 200,000
 Lost Time Incidence Rate = LTIs X 200,000
 DART Incidence Rate = LTIs + RWC X 200,000
 Recordable Incidence Rate = RCRD X 200,000
 Lost Time Frequency Rate = LTIs X 1,000,000
 DART Frequency Rate = LTIs + RWC X 1,000,000
 Recordable Frequency Rate = RCRD X 1,000,000

Middle East Water Total Incidence Rates vs Manhours (Figure 1)

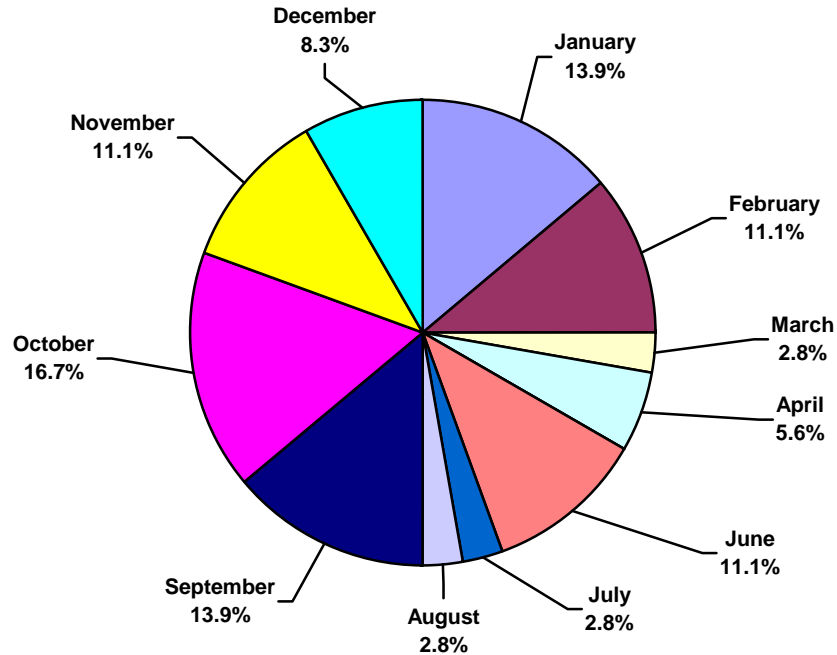




IADC 2002 Middle East Water Charts

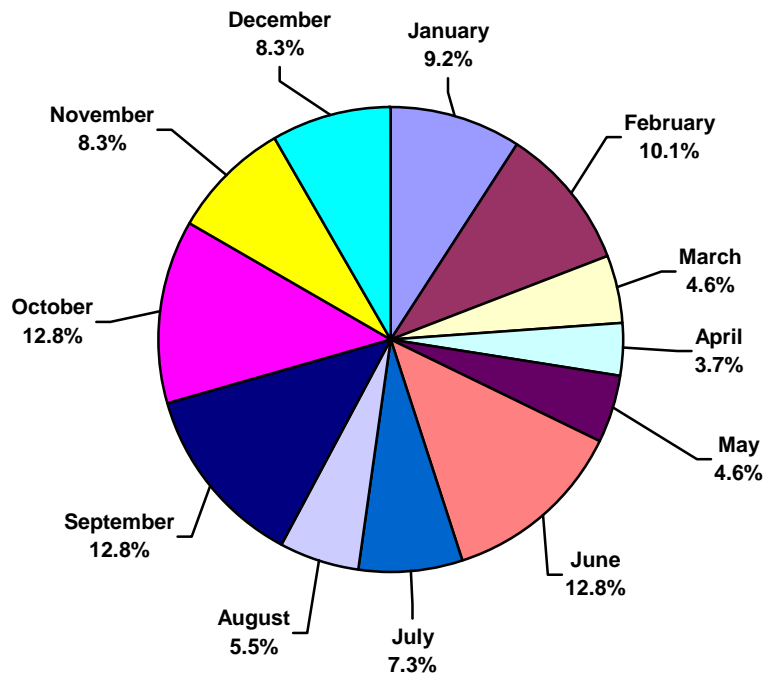
Middle East Water Total Lost Time Incidents by Month (Chart 1)

Based on 38 Incidents



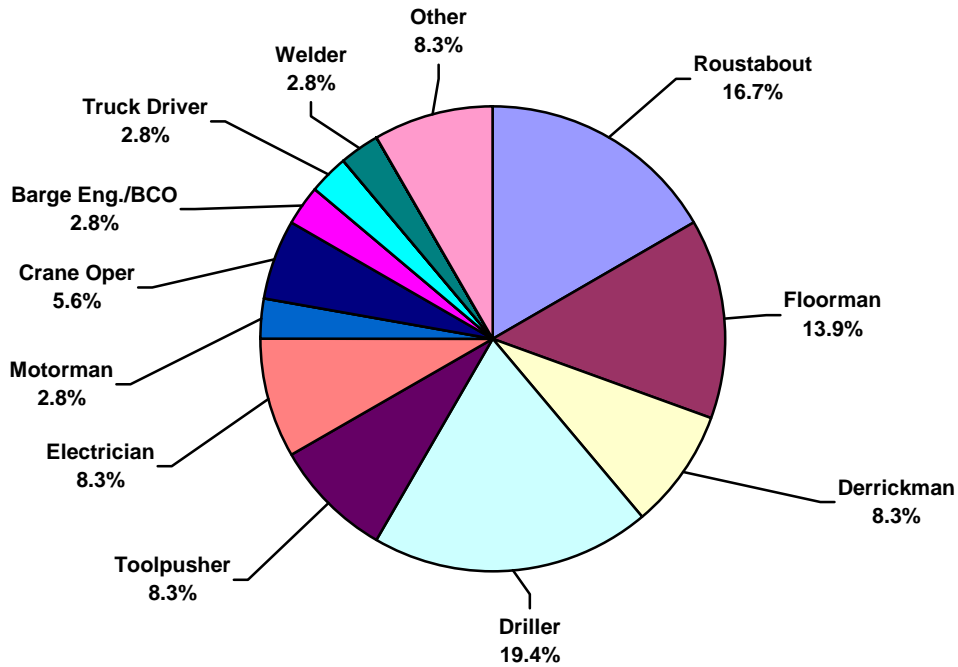
Middle East Water Total Recordable Incidents by Month (Chart 2)

Based on 112 Incidents

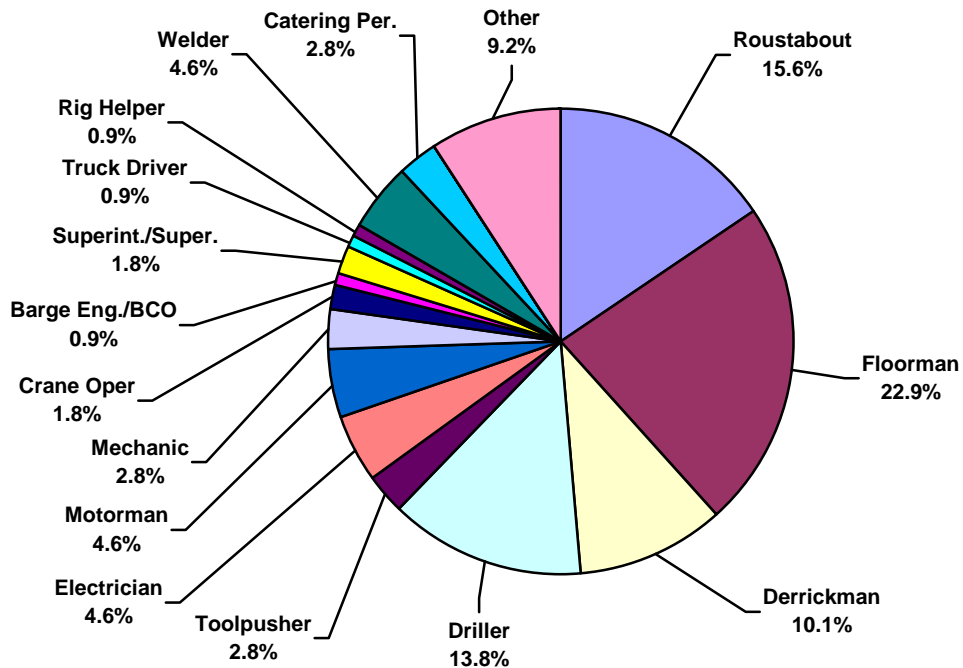




Middle East Water Total Lost Time Incidents by Occupation (Chart 3)
Based on 38 Incidents

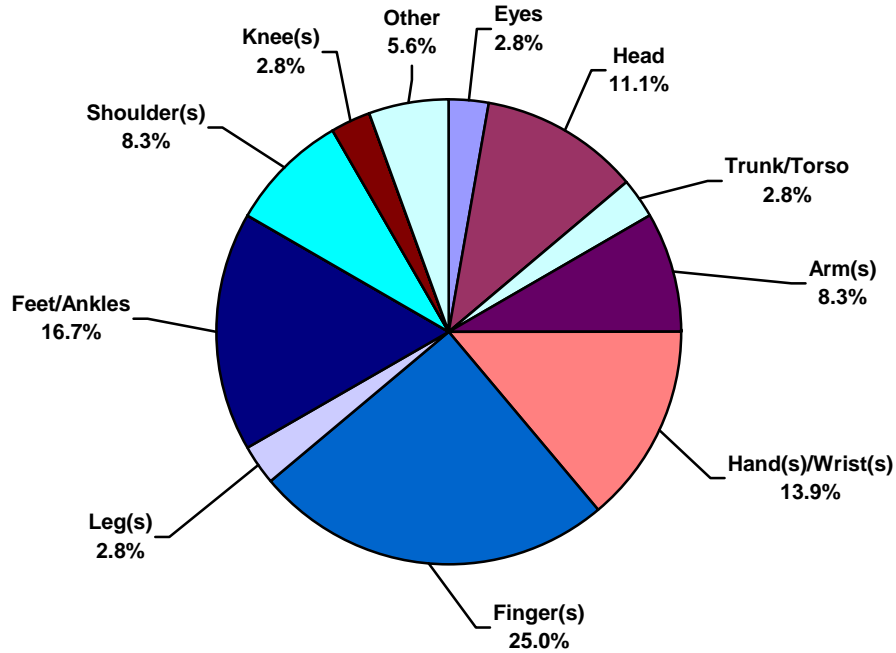


Middle East Water Total Recordable Incidents by Occupation (Chart 4)
Based on 112 Incidents

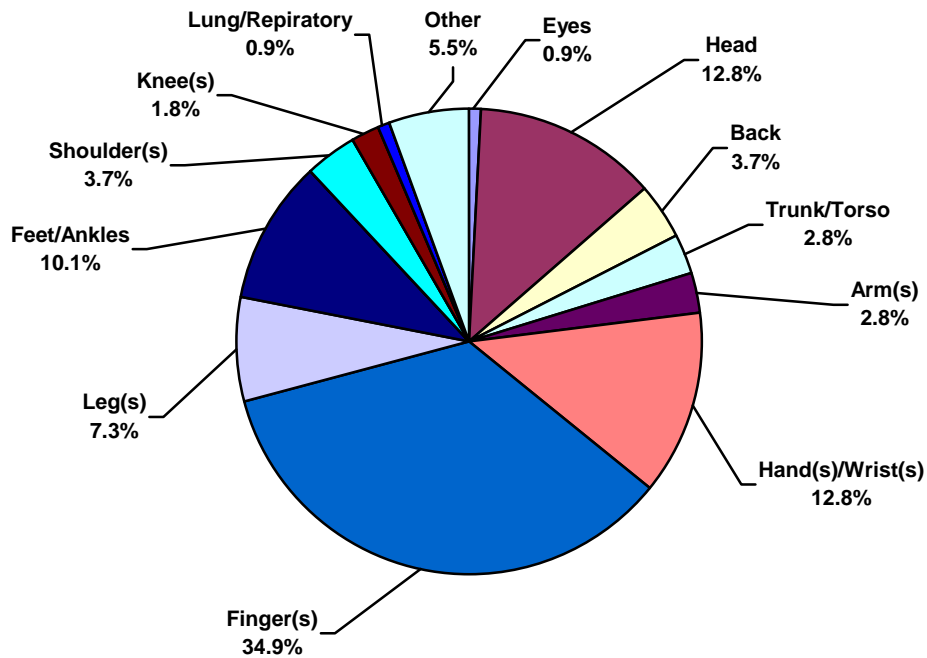




Middle East Water Total Lost Time Incidents by Body Part (Chart 5)
Based on 38 Incidents

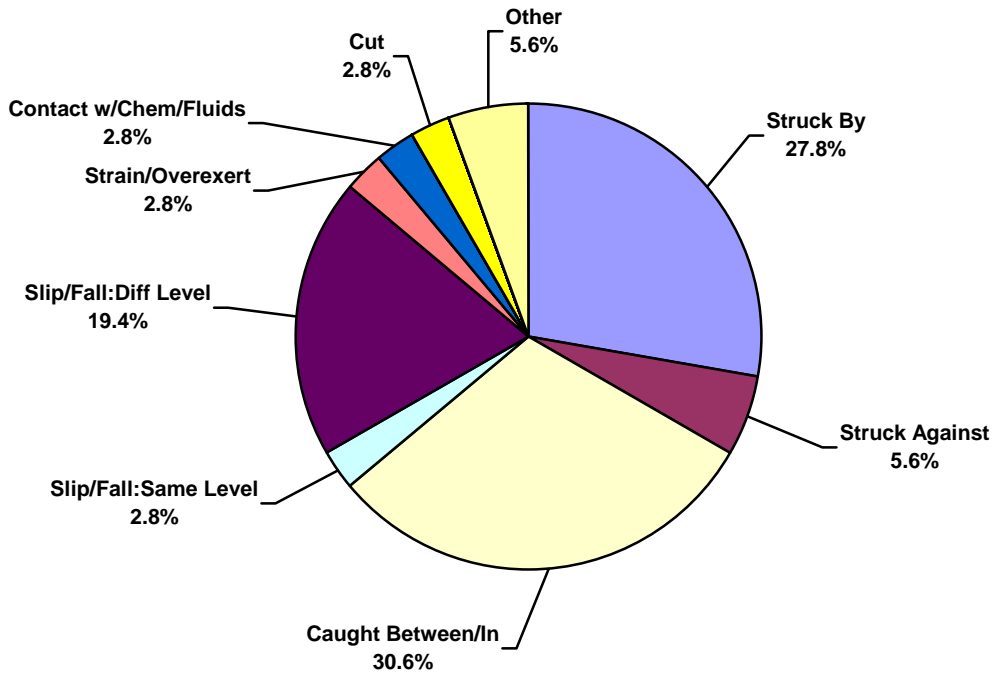


Middle East Water Total Recordable Incidents by Body Part (Chart 6)
Based on 112 Incidents

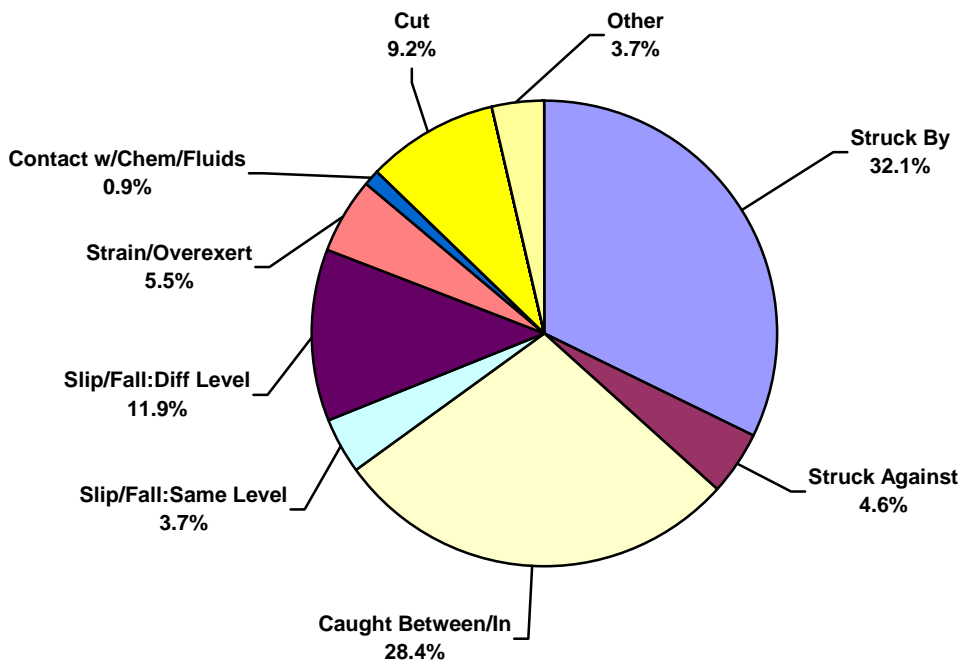




Middle East Water Total Lost Time Incidents by Incident Type (Chart 7)
Based on 38 Incidents

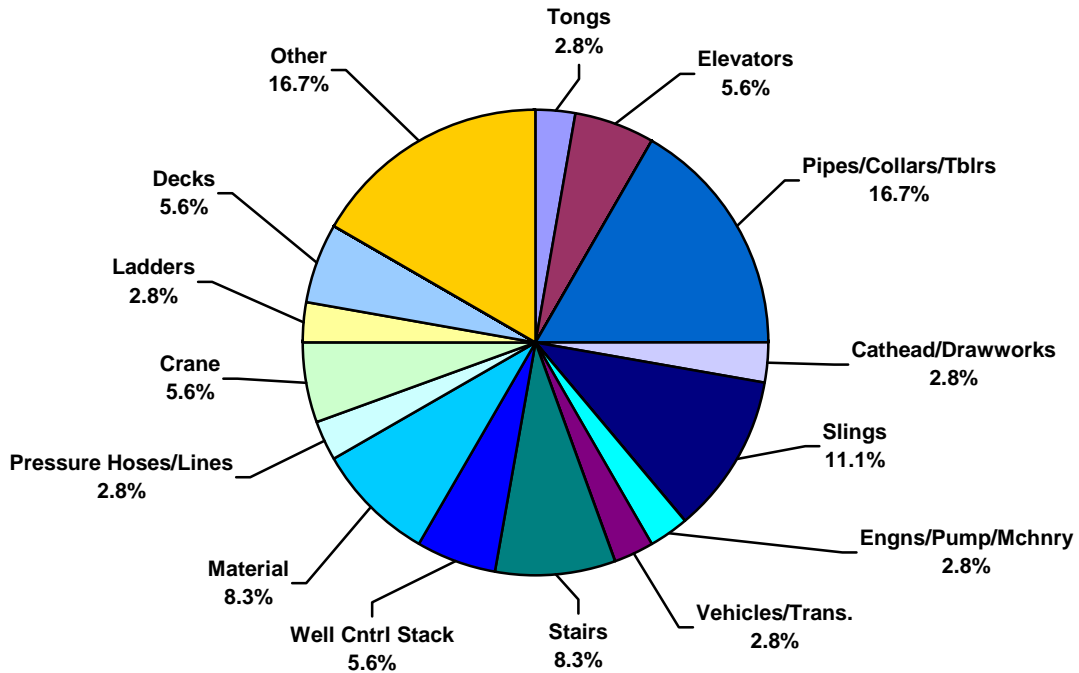


Middle East Water Total Recordable Incidents by Incident Type (Chart 8)
Based on 112 Incidents

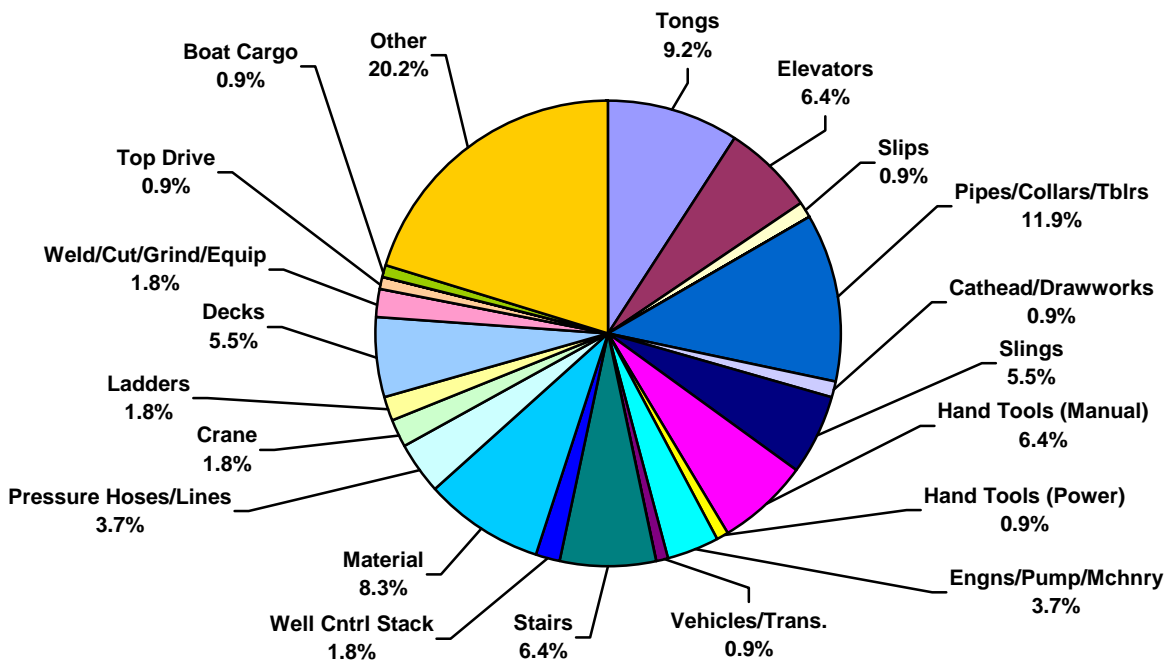




Middle East Water Total Lost Time Incidents by Equipment (Chart 9)
Based on 38 Incidents

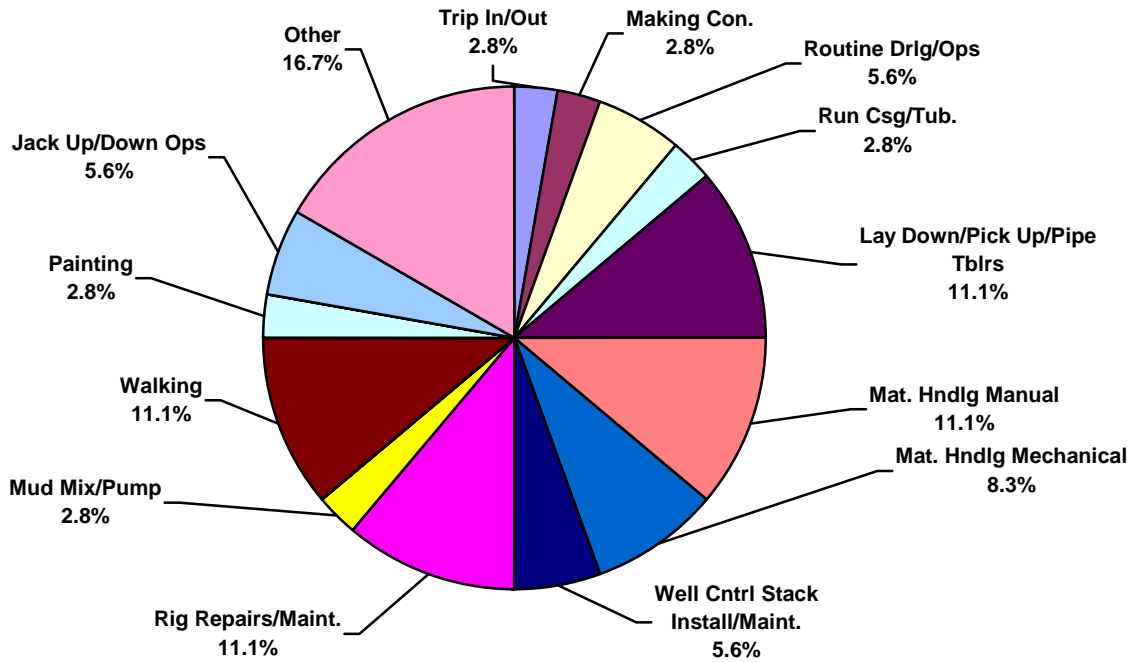


Middle East Water Total Recordable Incidents by Equipment (Chart 10)
Based on 112 Incidents

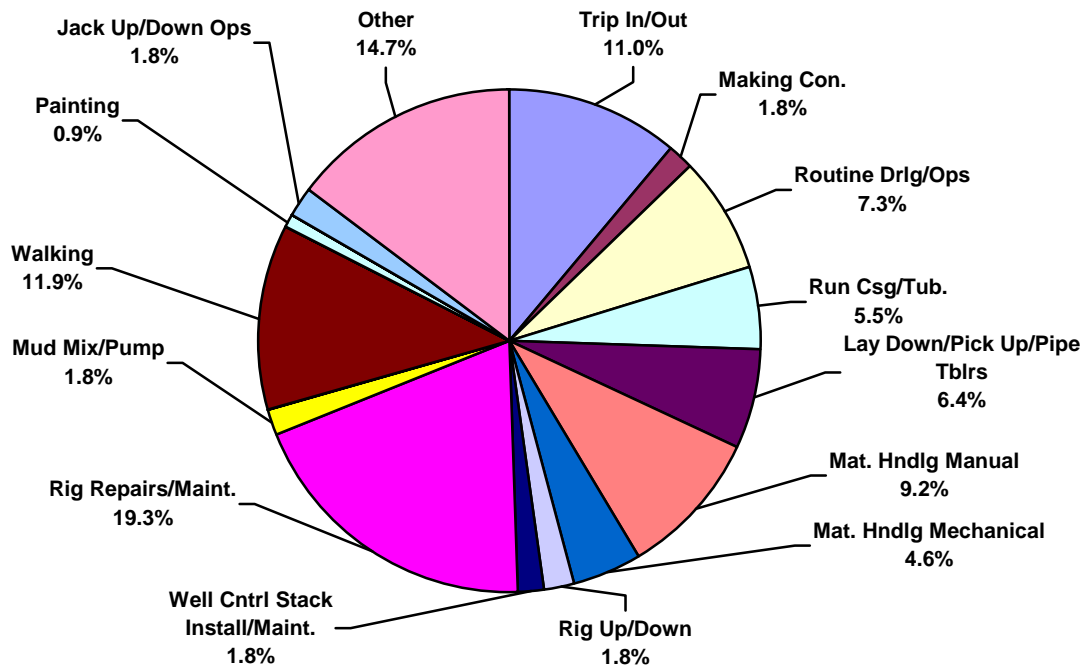




Middle East Water Total Lost Time Incidents by Operation (Chart 11)
Based on 38 Incidents

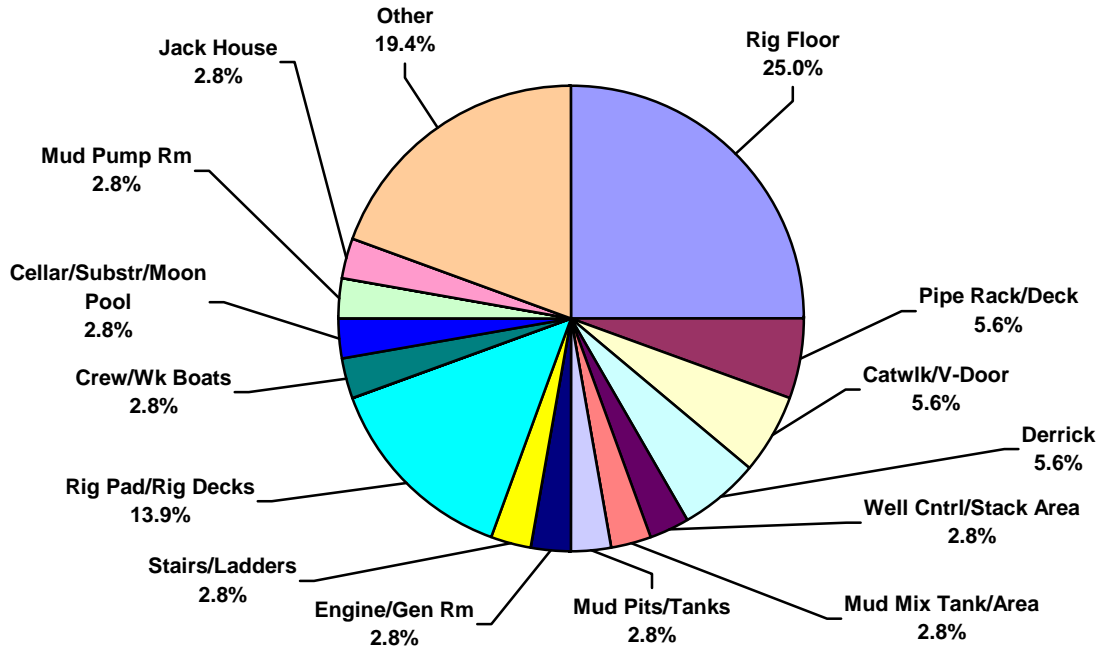


Middle East Water Total Recordable Incidents by Operation (Chart 12)
Based on 112 Incidents

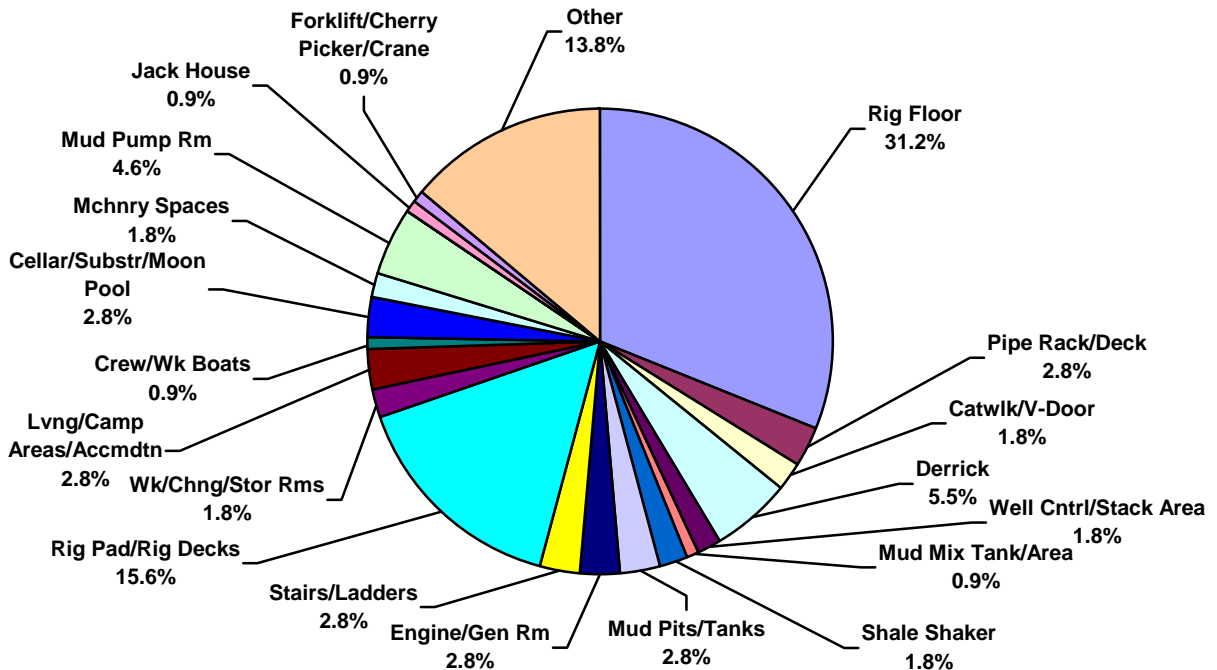




Middle East Water Total Lost Time Incidents by Location (Chart 13)
Based on 38 Incidents

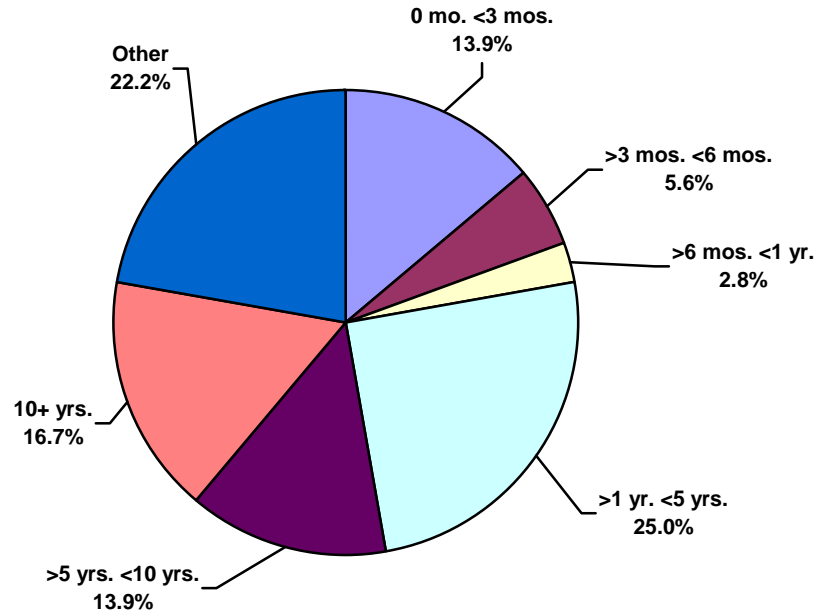


Middle East Water Total Recordable Incidents by Location (Chart 14)
Based on 112 Incidents

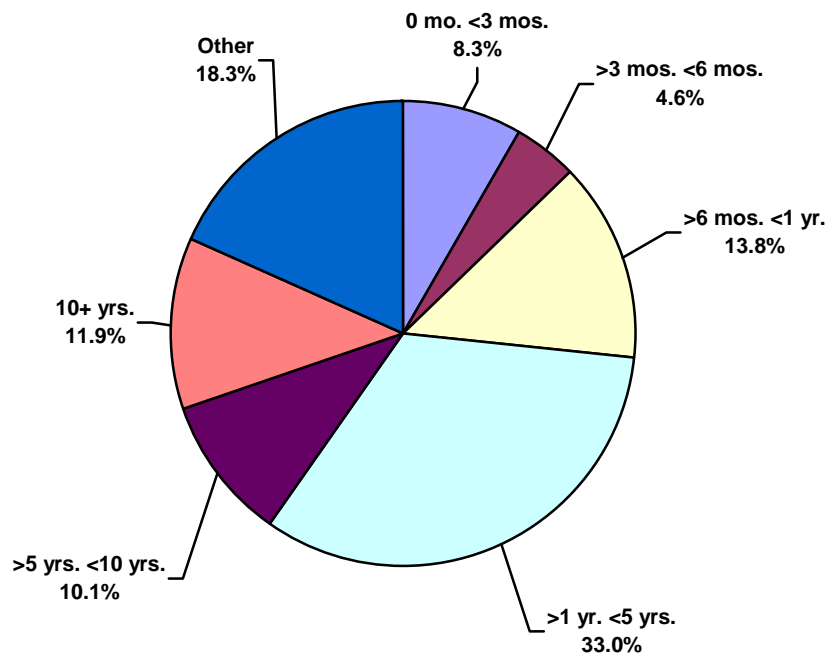




Middle East Water Total Lost Time Incidents by Time in Service (Chart 15)
Based on 38 Incidents

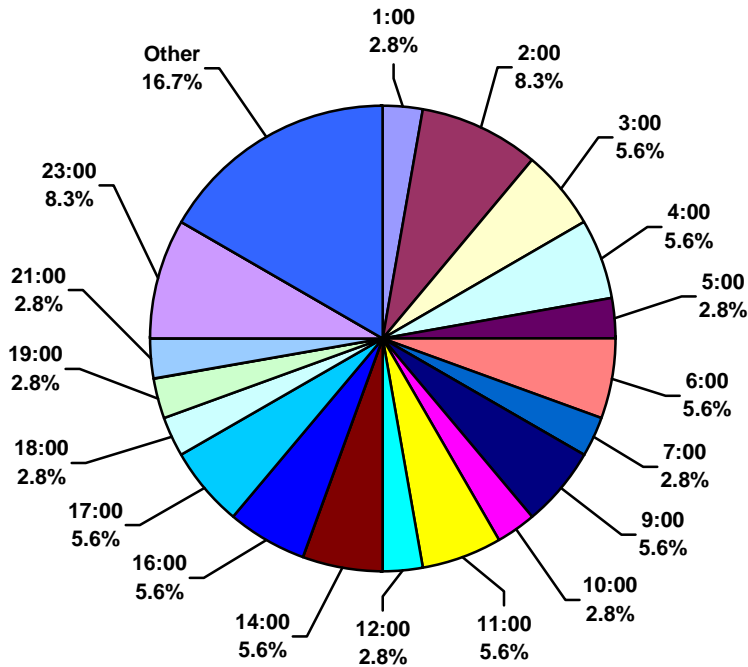


Middle East Water Total Recordable Incidents by Time in Service (Chart 16)
Based on 112 Incidents





Middle East Water Total Lost Time Incidents by Time of Day (Chart 17)
Based on 38 Incidents



Middle East Water Total Recordable Incidents by Time of Day (Chart 18)
Based on 112 Incidents

