



# IADC ASP PROGRAM

## 2002



# Summary of Occupational Incidents (Middle East Land Totals)

*Issued 1 May 2003*



# Table of Contents

(Table of Contents is Hyperlinked, Just click on Topic & go)

<b>2002 ASP PROGRAM MIDDLE EAST LAND TOTALS .....</b>	<b>3</b>
IADC 2002 MIDDLE EAST LAND TOTALS (TABLE 1) .....	3
<i>Middle East Land Total LTI &amp; Recordable Incidence Rates vs Manhours (Figure 1) .....</i>	<i>3</i>
IADC 2002 MIDDLE EAST LAND CHART .....	4
<i>Middle East Land Total Lost Time Incidents by Month (Chart 1).....</i>	<i>4</i>
<i>Middle East Land Total Recordable Incidents by Month (Chart 2) .....</i>	<i>4</i>
<i>Middle East Land Total Lost Time Incidents by Occupation (Chart 3).....</i>	<i>5</i>
<i>Middle East Land Total Recordable Incidents by Occupation (Chart 4) .....</i>	<i>5</i>
<i>Middle East Land Total Lost Time Incidents by Body Part (Chart 5).....</i>	<i>6</i>
<i>Middle East Land Total Recordable Incidents by Body Part (Chart 6) .....</i>	<i>6</i>
<i>Middle East Land Total Lost Time Incidents by Incident Type (Chart 7) .....</i>	<i>7</i>
<i>Middle East Land Total Recordable Incidents by Incident Type (Chart 8).....</i>	<i>7</i>
<i>Middle East Land Total Lost Time Incidents by Equipment (Chart 9).....</i>	<i>8</i>
<i>Middle East Land Total Recordable Incidents by Equipment (Chart 10).....</i>	<i>8</i>
<i>Middle East Land Total Lost Time Incidents by Operation (Chart 11).....</i>	<i>9</i>
<i>Middle East Land Total Recordable Incidents by Operation (Chart 12).....</i>	<i>9</i>
<i>Middle East Land Total Lost Time Incidents by Location (Chart 13).....</i>	<i>10</i>
<i>Middle East Land Total Recordable Incidents by Location (Chart 14) .....</i>	<i>10</i>
<i>Middle East Land Total Lost Time Incidents by Time in Service (Chart 15).....</i>	<i>11</i>
<i>Middle East Land Total Recordable Incidents by Time in Service (Chart 16).....</i>	<i>11</i>
<i>Middle East Land Total Lost Time Incidents by Time of Day (Chart 17) .....</i>	<i>12</i>
<i>Middle East Land Total Recordable Incidents by Time of Day (Chart 18).....</i>	<i>12</i>



# 2002 ASP Program Middle East Land Totals

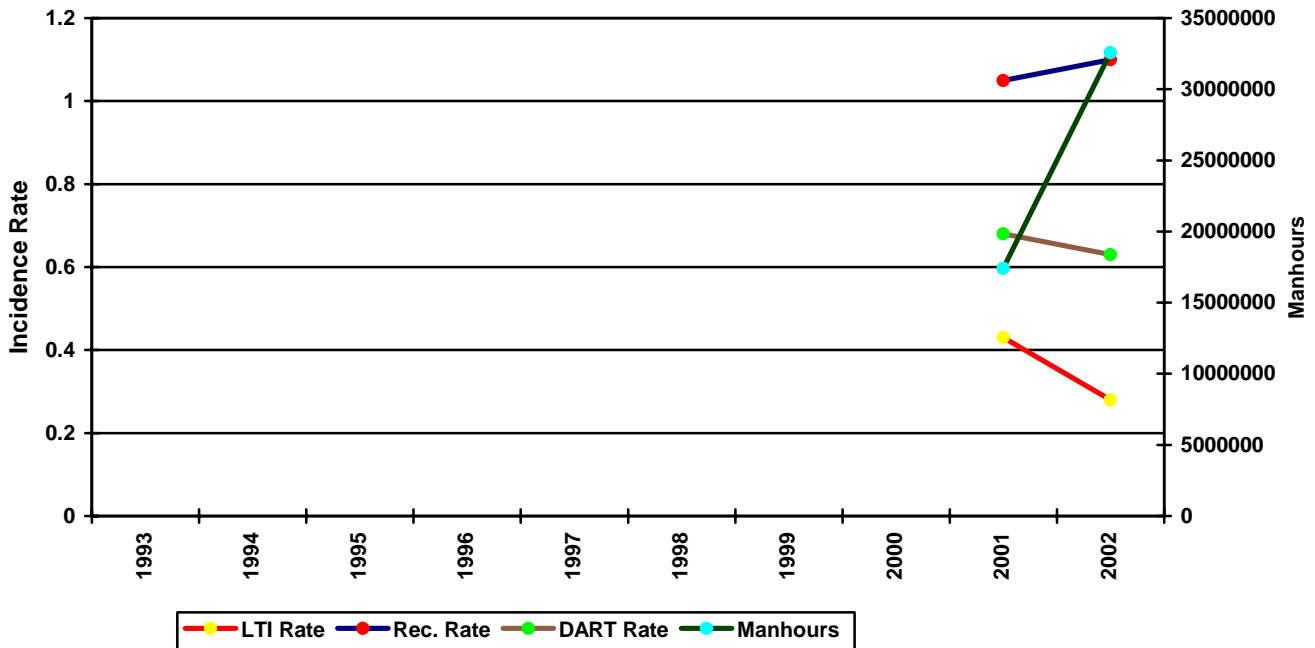
## IADC 2002 Middle East Land Totals (Table 1)

	<u>Total</u>
Total Manhours	<b>32,570,937.00</b>
Total Medical Treatment Incidents	<b>76</b>
Total Restricted Work Incidents	<b>58</b>
Total Lost Time Incidents	<b>45</b>
Total Fatalities	<b>0</b>
Total Recordables	<b>179</b>
MTO Incidence Rate	<b>0.47</b>
RWC Incidence Rate	<b>0.36</b>
LTI Incidence Rate	<b>0.28</b>
LTI Frequency Rate	<b>1.38</b>
DART Incidence Rate	<b>0.63</b>
DART Frequency Rate	<b>3.16</b>
Recordable Incidence Rate	<b>1.10</b>
Recordable Frequency Rate	<b>5.50</b>

Companies Reporting: Land – 15

Medical Treatment Incidence Rate = MTOs X 200,000  
 Restricted Work Incidence Rate = RWCs X 200,000  
 Lost Time Incidence Rate = LTIs X 200,000  
 DART Incidence Rate = LTIs + RWC X 200,000  
 Recordable Incidence Rate = RCRD X 200,000  
 Lost Time Frequency Rate = LTIs X 1,000,000  
 DART Frequency Rate = LTIs + RWC X 1,000,000  
 Recordable Frequency Rate = RCRD X 1,000,000

Middle East Land Total LTI & Recordable Incidence Rates vs Manhours (Figure 1)

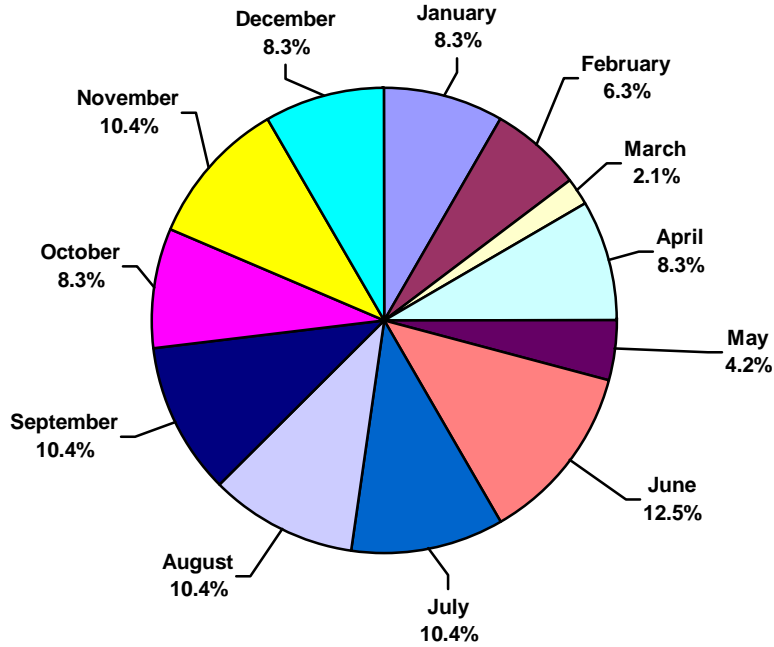




## IADC 2002 Middle East Land Chart

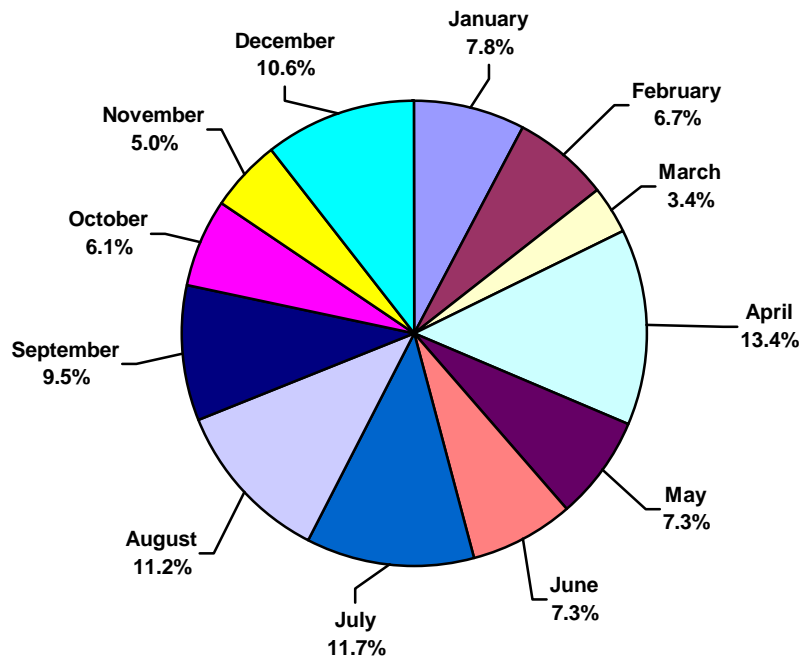
### Middle East Land Total Lost Time Incidents by Month (Chart 1)

Based on 45 Incidents



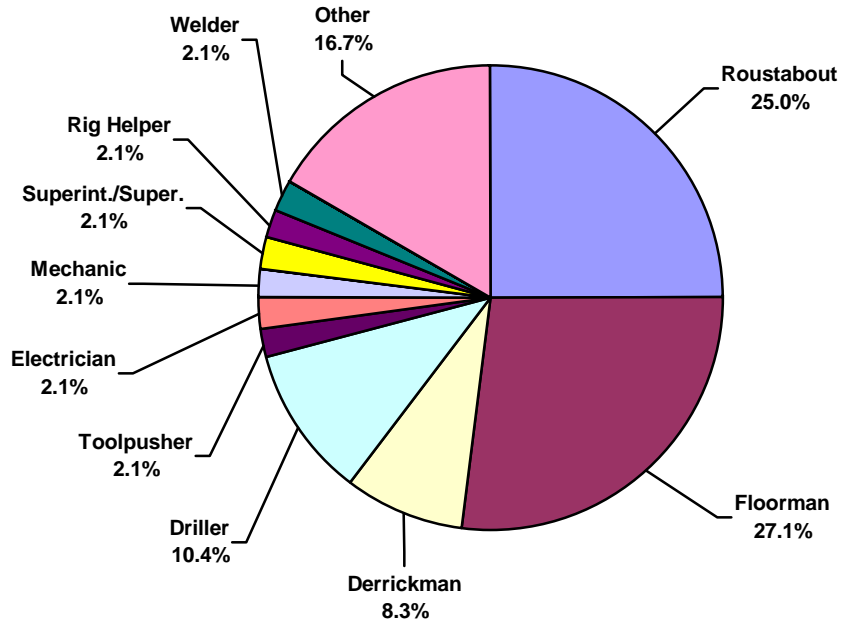
### Middle East Land Total Recordable Incidents by Month (Chart 2)

Based on 179 Incidents

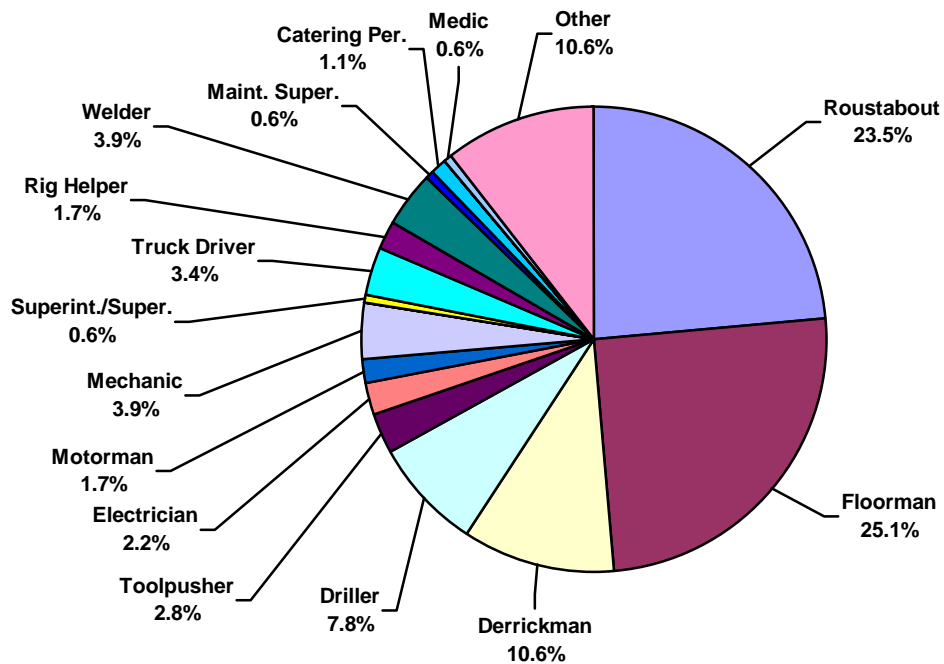




**Middle East Land Total Lost Time Incidents by Occupation (Chart 3)**  
Based on 45 Incidents

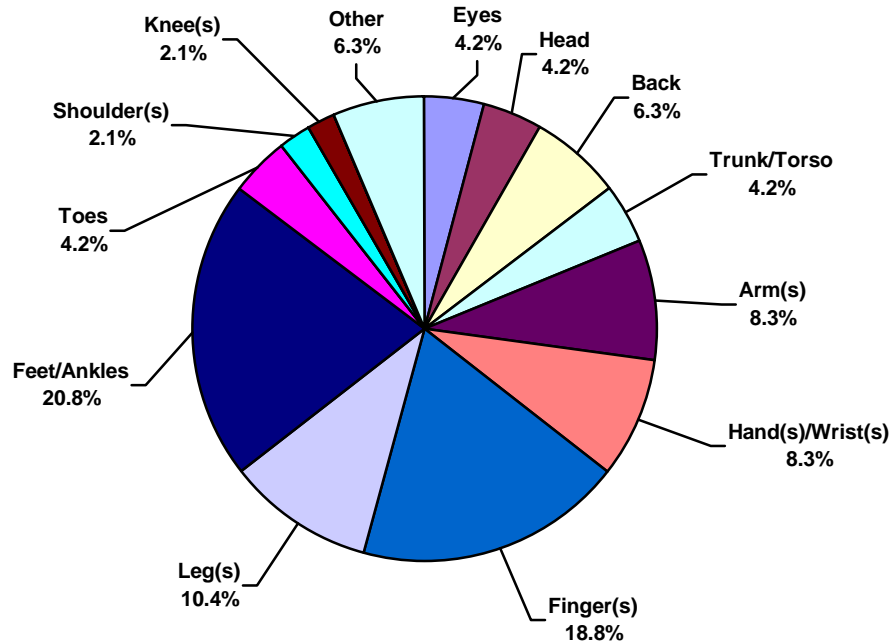


**Middle East Land Total Recordable Incidents by Occupation (Chart 4)**  
Based on 179 Incidents

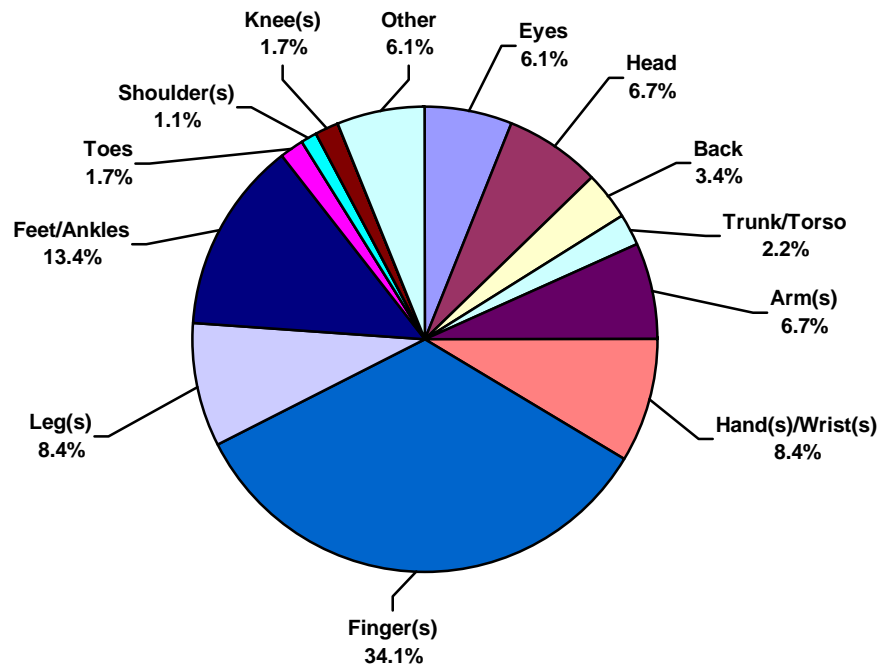




**Middle East Land Total Lost Time Incidents by Body Part (Chart 5)**  
Based on 45 Incidents

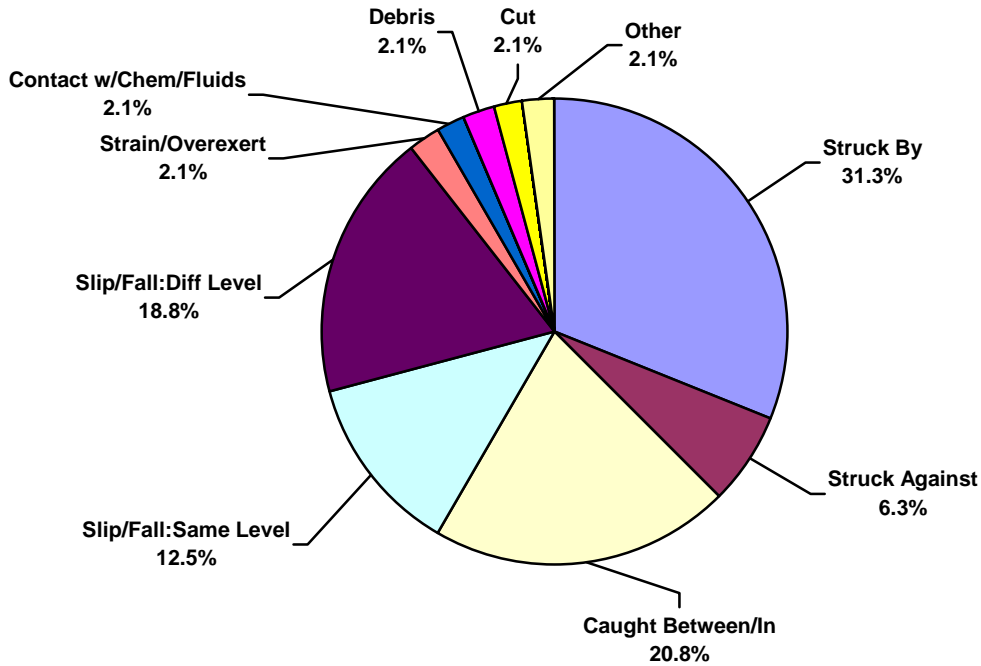


**Middle East Land Total Recordable Incidents by Body Part (Chart 6)**  
Based on 179 Incidents

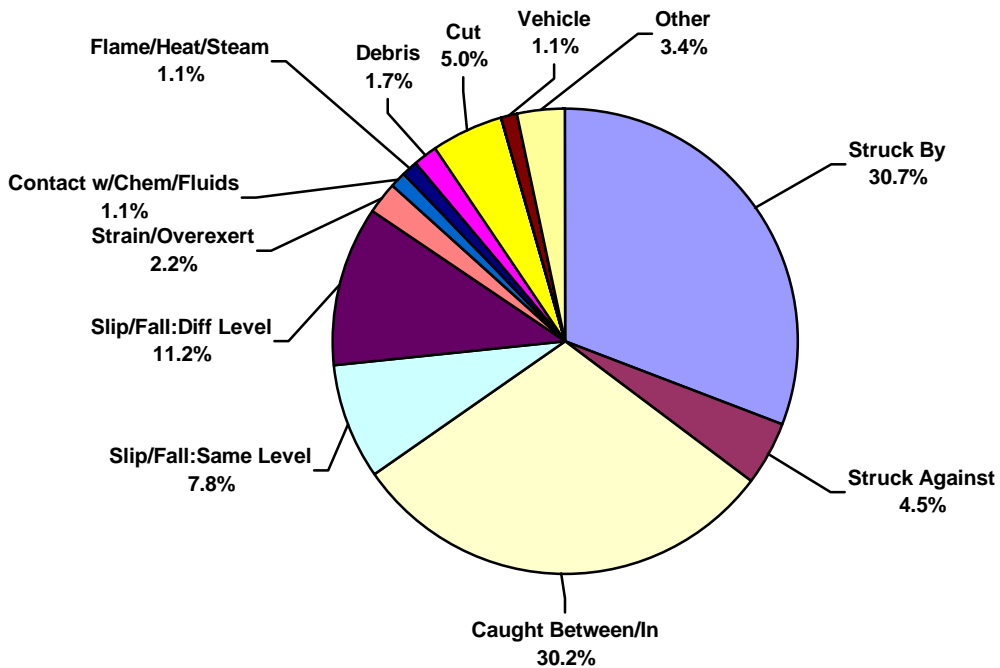




**Middle East Land Total Lost Time Incidents by Incident Type (Chart 7)**  
Based on 45 Incidents

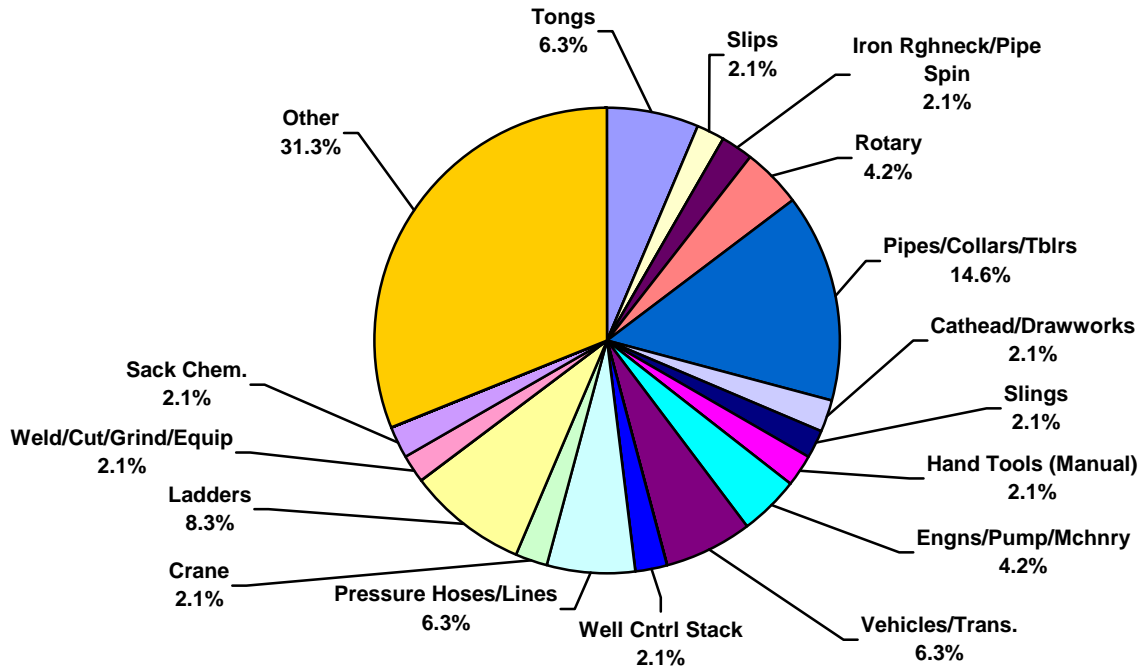


**Middle East Land Total Recordable Incidents by Incident Type (Chart 8)**  
Based on 179 Incidents

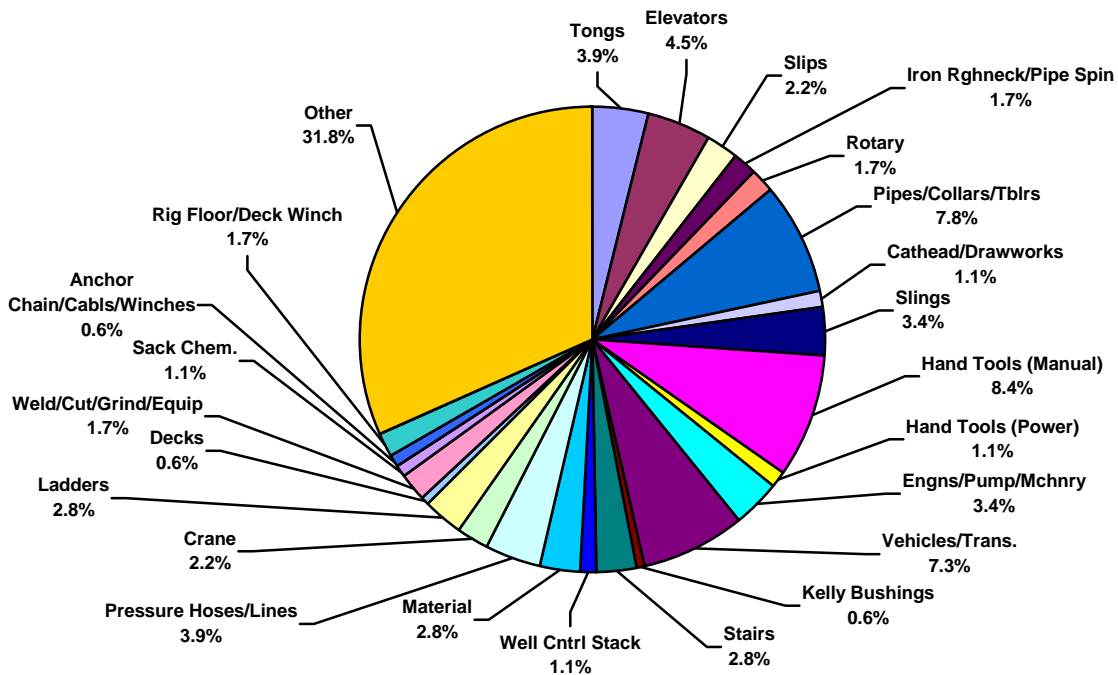




**Middle East Land Total Lost Time Incidents by Equipment (Chart 9)**  
Based on 45 Incidents

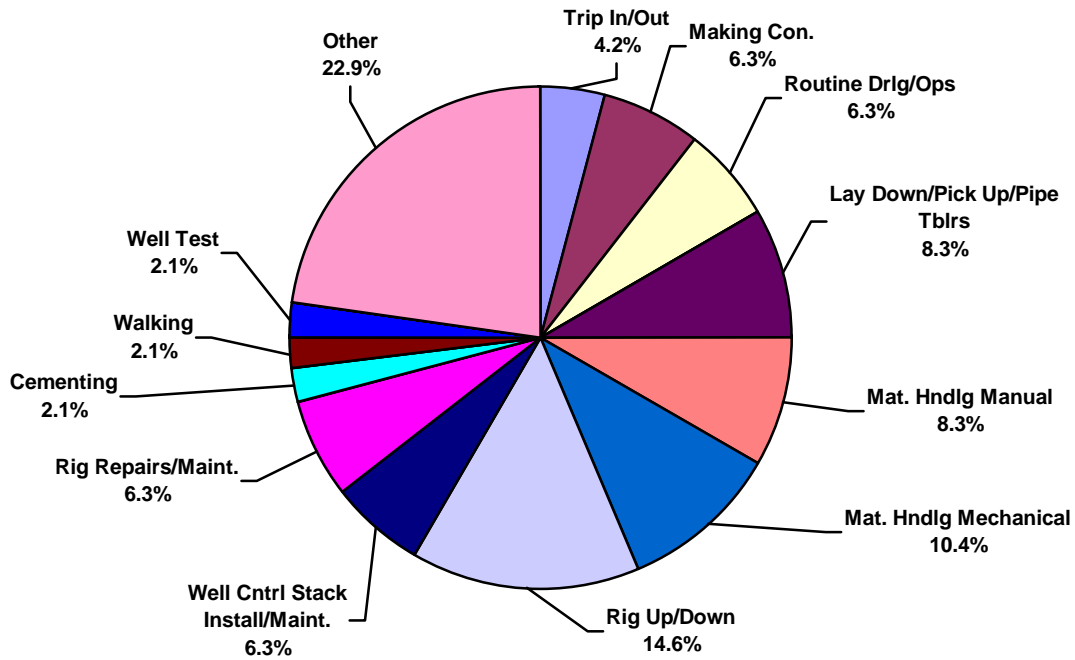


**Middle East Land Total Recordable Incidents by Equipment (Chart10)**  
Based on 179 Incidents

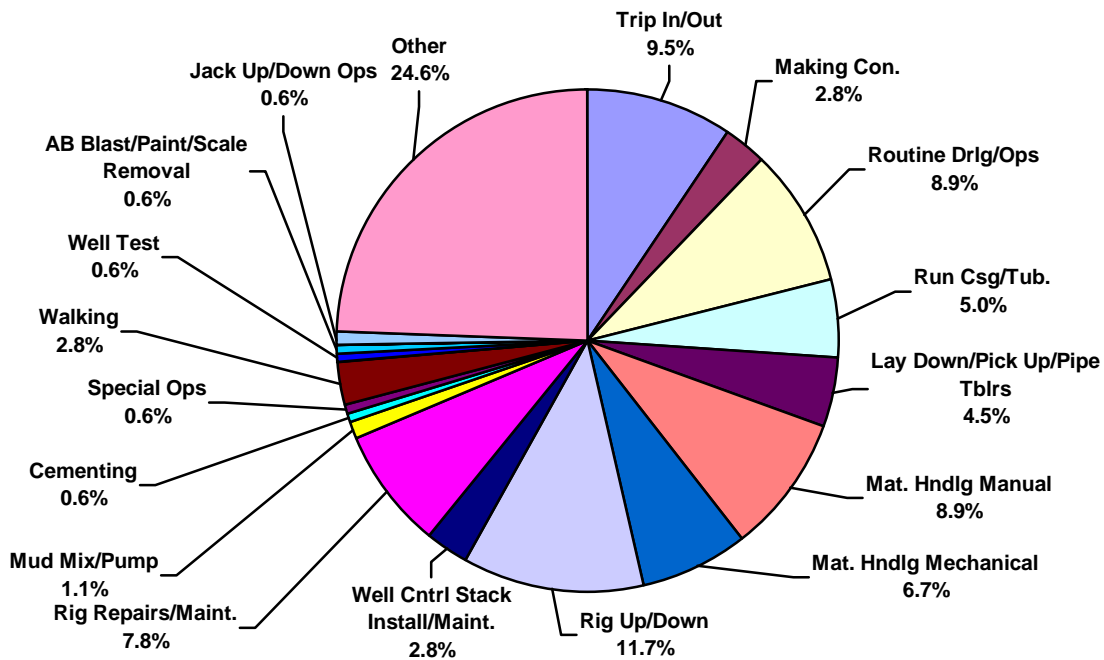




**Middle East Land Total Lost Time Incidents by Operation (Chart 11)**  
Based on 45 Incidents

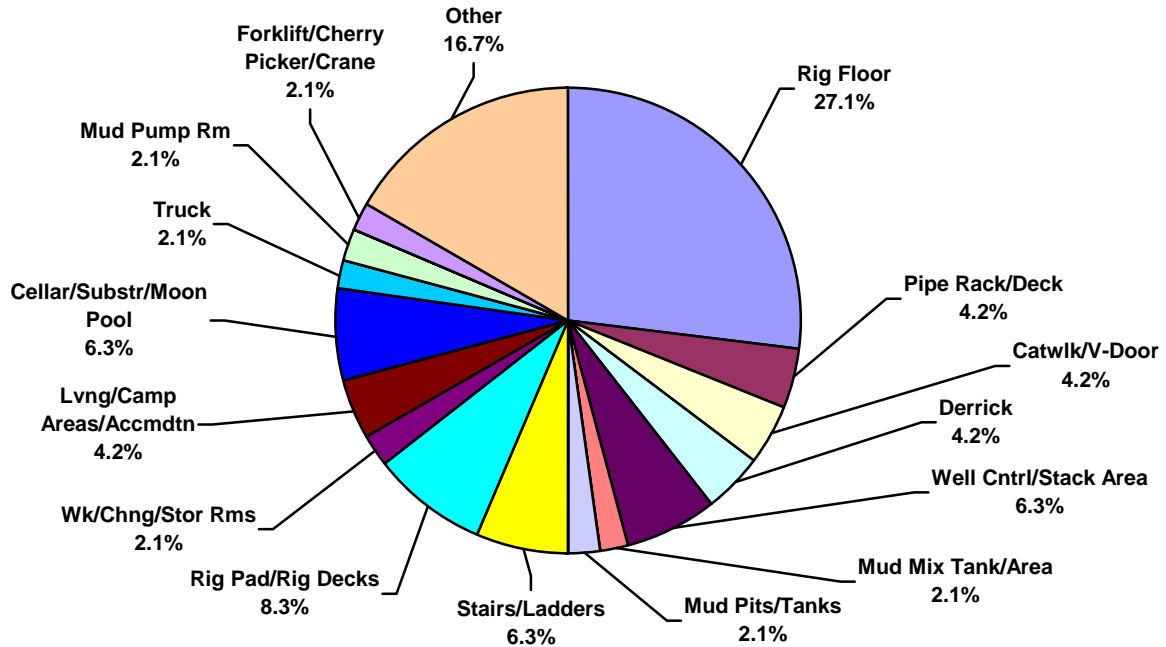


**Middle East Land Total Recordable Incidents by Operation (Chart 12)**  
Based on 179 Incidents

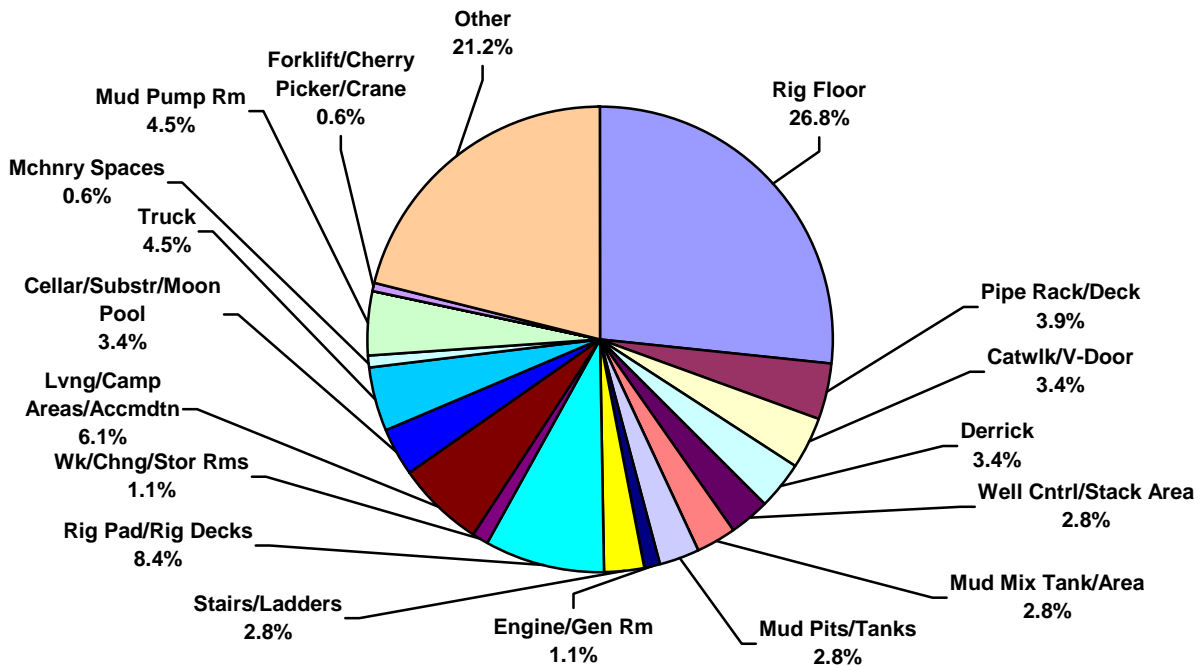




**Middle East Land Total Lost Time Incidents by Location (Chart 13)**  
Based on 45 Incidents

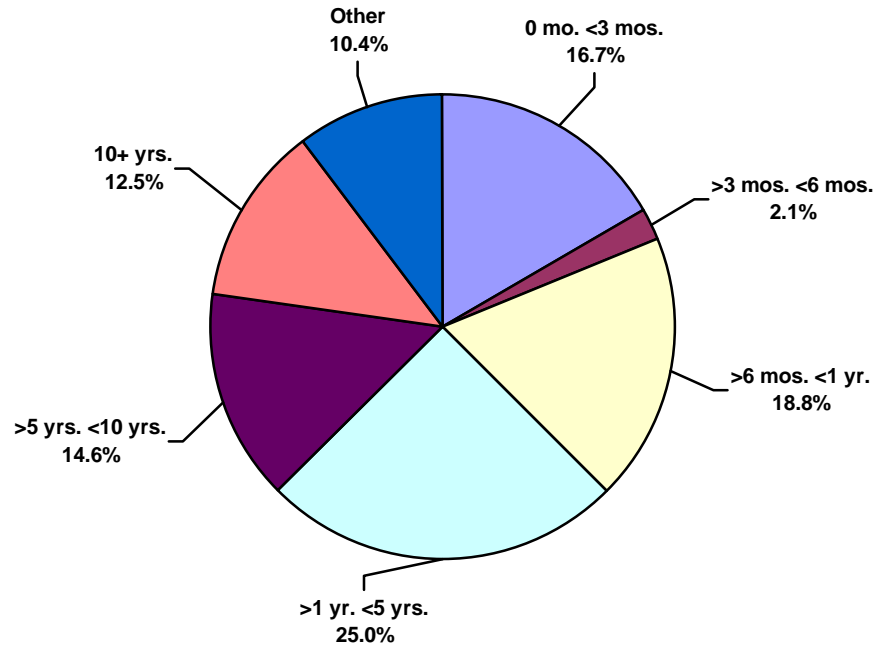


**Middle East Land Total Recordable Incidents by Location (Chart 14)**  
Based on 179 Incidents

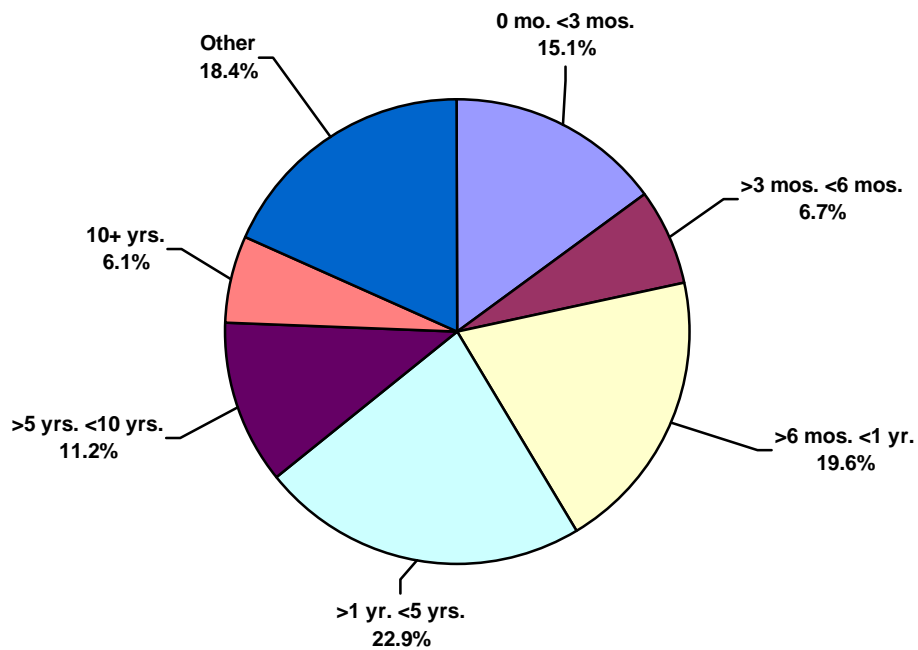




**Middle East Land Total Lost Time Incidents by Time in Service (Chart 15)**  
Based on 45 Incidents

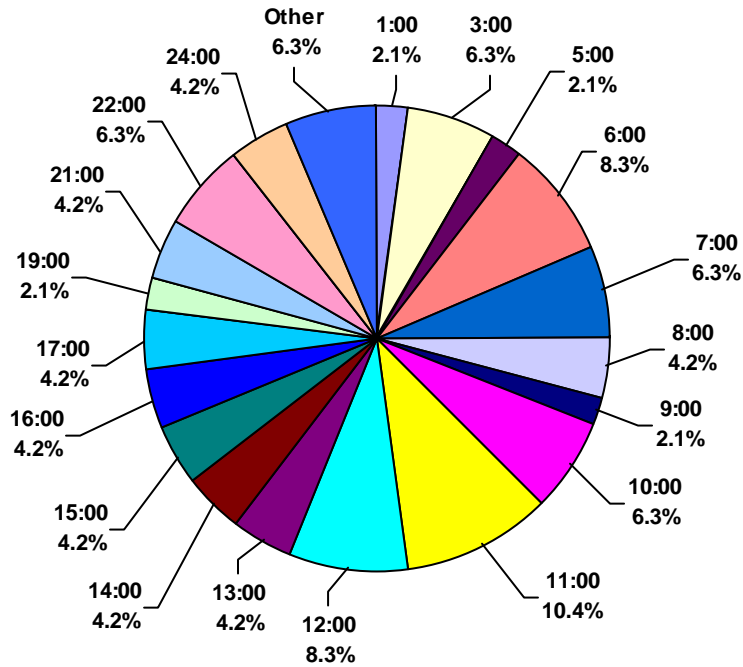


**Middle East Land Total Recordable Incidents by Time in Service (Chart 16)**  
Based on 179 Incidents





**Middle East Land Total Lost Time Incidents by Time of Day (Chart 17)**  
Based on 45 Incidents



**Middle East Land Total Recordable Incidents by Time of Day (Chart 18)**  
Based on 179 Incidents

