



IADC ASP PROGRAM

2002



Summary of Occupational Incidents (Industry Totals)

Issued 1 May 2003



Table of Contents

(Table of Contents is Hyperlinked, Just click on Topic & go)

2002 ASP PROGRAM INDUSTRY TOTALS	3
2002 FINAL REPORT (TABLE 1).....	3
5 YEAR SUMMARY REPORT (TABLE 2)	4
IADC 2002 INDUSTRY TOTALS (TABLE 3)	5
<i>Total Industry LTI & Recordable Incidence Rates vs Manhours (Figure 1)</i>	5
<i>Total Industry Land LTI & Recordable Incidence Rates vs Manhours (Figure 2)</i>	6
<i>Total Industry Water LTI & Recordable Incidence Rates vs Manhours (Figure 3)</i>	6
IADC 2002 TOTAL INDUSTRY CHARTS	7
<i>Total Industry Lost Time Incidents by Month (Chart 1)</i>	7
<i>Total Industry Recordable Incidents by Month (Chart 2)</i>	7
<i>Total Industry Lost Time Incidents by Occupation (Chart 3)</i>	8
<i>Total Industry Recordable Incidents by Occupation (Chart 4)</i>	8
<i>Total Industry Lost Time Incidents by Body Part (Chart 5)</i>	9
<i>Total Industry Recordable Incidents by Body Part (Chart 6)</i>	9
<i>Total Industry Lost Time Incidents by Incident Type (Chart 7)</i>	10
<i>Total Industry Recordable Incidents by Incident Type (Chart 8)</i>	10
<i>Total Industry Lost Time Incidents by Equipment (Chart 9)</i>	11
<i>Total Industry Recordable Incidents by Equipment (Chart 10)</i>	11
<i>Total Industry Lost Time Incidents by Operation (Chart 11)</i>	12
<i>Total Industry Recordable Incidents by Operation (Chart 12)</i>	12
<i>Total Industry Lost Time Incidents by Location (Chart 13)</i>	13
<i>Total Industry Recordable Incidents by Location (Chart 14)</i>	13
<i>Total Industry Lost Time Incidents by Time in Service (Chart 15)</i>	14
<i>Total Industry Recordable Incidents by Time in Service (Chart 16)</i>	14
<i>Total Industry Lost Time Incidents by Time of Day (Chart 17)</i>	15
<i>Total Industry Recordable Incidents by Time of Day (Chart 18)</i>	15
2002 ASP PROGRAM REGIONAL TOTALS COMBINED LAND & WATER.....	16
IADC 2002 US TOTALS (TABLE 4)	17
<i>US Total LTI & Recordable Incidence Rates vs Manhours (Figure 4)</i>	17
IADC 2002 EUROPEAN TOTALS (TABLE 5)	18
<i>European Total LTI & Recordable Incidence Rates vs Manhours (Figure 5)</i>	18
IADC 2002 INTERNATIONAL TOTALS (TABLE 6).....	19
<i>Total International LTI & Recordable Incidence Rates vs Manhours (Figure 6)</i>	19
<i>International Land LTI & Recordable Incidence Rates vs Manhours (Figure 7)</i>	20
<i>International Water LTI & Recordable Incidence Rates vs Manhours (Figure 8)</i>	20
IADC 2002 CANADA TOTALS (TABLE 7)	21
<i>Canada Total LTI & Recordable Incidence Rates vs Manhours (Figure 9)</i>	21
IADC 2002 CENTRAL SOUTH AMERICA TOTALS (TABLE 8).....	22
<i>Central/South America Total LTI & Recordable Incidence Rates vs Manhours (Figure 10)</i>	22
IADC 2002 AFRICA TOTALS (TABLE 9)	23
<i>Africa Total LTI & Recordable Incidence Rates vs Manhours (Figure 11)</i>	23
IADC 2002 MIDDLE EAST TOTALS (TABLE 10)	24
<i>Middle East Total LTI & Recordable Incidence Rates vs Manhours (Figure 12)</i>	24
IADC 2002 ASIA PACIFIC TOTALS (TABLE 11)	25
<i>Asia Pacific Total LTI & Recordable Incidence Rates vs Manhours (Figure 13)</i>	25



2002 ASP Program Industry Totals

IADC ASP Program 2002 Final Report (Table 1) January – December

Note: Figures are unaudited (Total manhours revised 2 June 2003)

CATEGORY	TOTAL MANHOURS	TOTAL MTOs	TOTAL RWCs	TOTAL LTIs	TOTAL FTLs	TOTAL RCRD	LTI INCD. RATE	LTI FREQ. RATE	DART INCD. RATE	DART FREQ. RATE	RCRD INCD. RATE	RCRD FREQ. RATE
US Land	42,291,515.00	677	278	356	9	1320	1.73	8.63	3.04	15.20	6.24	31.21
US Water	40,428,840.00	217	128	101	1	447	0.50	2.52	1.14	5.69	2.21	11.06
Canada Land	1,662,362.00	36	2	9	1	48	1.20	6.02	1.44	7.22	5.77	28.87
Canada Water	1,315,029.00	11	2	7	0	20	1.06	5.32	1.37	6.84	3.04	15.21
Central / SA Land	32,325,996.00	66	71	54	0	191	0.33	1.67	0.77	3.86	1.18	5.90
Central / SA Water	14,552,495.00	63	49	31	1	144	0.44	2.20	1.11	5.57	1.98	9.90
European Land	5,108,958.00	24	16	24	0	64	0.94	4.70	1.57	7.83	2.51	12.53
European Water	25,112,371.00	97	34	59	3	193	0.49	2.47	0.76	3.82	1.54	7.69
Africa Land	12,932,431.00	57	16	57	0	130	0.88	4.41	1.13	5.64	2.01	10.05
Africa Water	19,649,637.00	77	34	43	0	154	0.44	2.19	0.78	3.92	1.57	7.84
Middle East Land	32,570,937.00	76	58	45	0	179	0.28	1.38	0.63	3.16	1.10	5.50
Middle East Water	17,701,580.00	46	28	38	0	112	0.43	2.15	0.75	3.73	1.27	6.33
Asia Pacific Land (Asia / Australia)	13,458,685.00	79	35	34	0	148	0.51	2.53	1.03	5.13	2.20	11.00
Asia Pacific Water (Asia / Australia)	22,213,156.00	88	15	47	0	147	0.42	2.12	0.56	2.79	1.32	6.62
US COMBINED	82,720,355.00	894	406	457	10	1767	1.13	5.66	2.11	10.55	4.27	21.36
CANADA COMBINED	2,977,391.00	47	4	16	1	68	1.14	5.71	1.41	7.05	4.57	22.84
CENTRAL / SA COMBINED	46,905,491.00	129	120	85	1	335	0.37	1.83	0.88	4.39	1.43	7.14
EUROPEAN COMBINED	30,221,329.00	121	50	83	3	257	0.57	2.85	0.90	4.50	1.70	8.50
AFRICA COMBINED	32,582,068.00	134	50	100	0	284	0.61	3.07	0.92	4.60	1.74	8.72
MIDDLE EAST COMBINED	50,272,517.00	122	86	83	0	291	0.33	1.65	0.67	3.36	1.16	5.79
ASIA COMBINED	35,671,841.00	164	50	81	0	295	0.45	2.27	0.73	3.67	1.65	8.27
INDUSTRY TOTAL	281,350,992.00	1611	766	905	15	3297	0.65	3.27	1.20	5.99	2.34	11.72

MTO = Medical Treatment Only	INCD = Incidence Rate (200,000 manhours) :	$LTI\ INCD\ Rate = (LTI\ s + FTLs) * 200000 / Total\ Manhours$ $DART\ INCD\ Rate = (RWC + LTI + FTL) * 200000 / Total\ Manhours$ $RCRD\ INCD\ Rate = (MTOs + RWCs + LTIs + FTLs) * 200000 / Total\ Manhours$
RWC = Restricted Work Case		
LTI = Lost Time Incident	FREQ = Frequency Rate (1,000,000 manhours):	$LTI\ FREQ\ Rate = (LTI\ s + FTLs) * 1000000 / Total\ Manhours$ $DART\ FREQ\ Rate = (RWC + LTI + FTL) * 1000000 / Total\ Manhours$ $RCRD\ FREQ\ Rate = (MTOs + RWCs + LTIs + FTLs) * 1000000 / Total\ Manhours$
FTL = Fatalities		
RCRD = Total Recordables		



IADC ASP Program 5 Year Summary Report (Table 2)

CATEGORIES	TYPE	2002		2001		2000		1999		1998	
		INCD Rate	FREQ Rate	INCD Rate	FREQ Rate	INCD Rate	FREQ Rate	INCD Rate	FREQ Rate	INCD Rate	FREQ Rate
US Land	LTI:	1.73	8.63	2.23	11.16	2.19	10.80	1.92	9.57	2.35	11.73
	DART:	3.04	15.20	3.88	19.39	4.65	23.26	3.74	18.68	4.55	22.77
	RCRD:	6.24	31.21	8.86	44.28	8.27	41.35	8.13	40.66	10.52	52.58
US Water	LTI:	0.50	2.52	0.67	3.35	0.53	2.57	0.31	1.57	0.68	3.38
	DART:	1.14	5.69	1.31	6.56	1.73	8.66	1.13	5.67	1.60	7.99
	RCRD:	2.21	11.06	2.30	11.49	2.93	14.64	2.76	13.82	4.01	20.07
International Land	LTI:	0.43	2.15	0.54	2.72	0.54	2.62	0.55	2.73	0.78	3.89
	DART:	0.82	4.11	0.93	4.67	1.00	4.99	0.87	4.36	1.12	5.62
	RCRD:	1.50	7.49	1.97	9.87	2.08	10.39	2.19	10.93	2.35	11.76
International Water	LTI:	0.44	2.21	0.50	2.51	0.48	2.19	0.50	2.51	0.60	2.98
	DART:	0.78	3.91	0.68	3.39	0.79	3.97	0.65	3.23	0.75	3.74
	RCRD:	1.53	7.65	1.75	8.73	1.76	8.82	1.52	7.59	1.68	8.40
Canada Land	LTI:	1.20	6.02	1.02	5.09	N/A	N/A	N/A	N/A	N/A	N/A
	DART:	1.44	7.22	1.19	5.94	N/A	N/A	N/A	N/A	N/A	N/A
	RCRD:	5.77	28.87	5.43	27.14	N/A	N/A	N/A	N/A	N/A	N/A
Canada Water	LTI:	1.06	5.32	1.00	4.98	N/A	N/A	N/A	N/A	N/A	N/A
	DART:	1.37	6.84	1.20	5.98	N/A	N/A	N/A	N/A	N/A	N/A
	RCRD:	3.04	15.21	1.40	6.98	N/A	N/A	N/A	N/A	N/A	N/A
Central / SA Land	LTI:	0.33	1.67	0.45	2.25	N/A	N/A	N/A	N/A	N/A	N/A
	DART:	0.77	3.86	0.85	4.24	N/A	N/A	N/A	N/A	N/A	N/A
	RCRD:	1.18	5.90	1.57	7.84	N/A	N/A	N/A	N/A	N/A	N/A
Central / SA Water	LTI:	0.44	2.20	0.86	4.31	N/A	N/A	N/A	N/A	N/A	N/A
	DART:	1.11	5.57	1.13	5.67	N/A	N/A	N/A	N/A	N/A	N/A
	RCRD:	1.98	9.90	2.49	12.47	N/A	N/A	N/A	N/A	N/A	N/A
European Land	LTI:	0.94	4.70	0.92	4.61	1.27	6.33	1.03	5.17	2.21	11.04
	DART:	1.57	7.83	1.54	7.68	1.65	8.23	1.28	6.40	2.54	12.68
	RCRD:	2.51	12.53	3.19	15.94	3.55	17.73	1.87	9.36	4.18	20.90
European Water	LTI:	0.49	2.47	0.73	3.67	0.97	4.73	0.88	4.40	0.98	4.92
	DART:	0.76	3.82	1.10	5.51	1.21	6.03	1.19	5.94	1.23	6.16
	RCRD:	1.54	7.69	2.03	10.15	2.33	11.65	2.76	13.82	3.13	15.66
Africa Land	LTI:	0.88	4.41	0.74	3.71	N/A	N/A	N/A	N/A	N/A	N/A
	DART:	1.13	5.64	1.09	5.47	N/A	N/A	N/A	N/A	N/A	N/A
	RCRD:	2.01	10.05	3.60	17.98	N/A	N/A	N/A	N/A	N/A	N/A
Africa Water	LTI:	0.44	2.19	0.58	2.91	N/A	N/A	N/A	N/A	N/A	N/A
	DART:	0.78	3.92	0.85	4.25	N/A	N/A	N/A	N/A	N/A	N/A
	RCRD:	1.57	7.84	1.94	9.69	N/A	N/A	N/A	N/A	N/A	N/A
Middle East Land	LTI:	0.28	1.38	0.43	2.13	N/A	N/A	N/A	N/A	N/A	N/A
	DART:	0.63	3.16	0.68	3.39	N/A	N/A	N/A	N/A	N/A	N/A
	RCRD:	1.10	5.50	1.05	5.23	N/A	N/A	N/A	N/A	N/A	N/A
Middle East Water	LTI:	0.43	2.15	0.25	1.26	N/A	N/A	N/A	N/A	N/A	N/A
	DART:	0.75	3.73	0.31	1.55	N/A	N/A	N/A	N/A	N/A	N/A
	RCRD:	1.27	6.33	0.97	4.83	N/A	N/A	N/A	N/A	N/A	N/A
Asia Pacific Land (Asia / Australia)	LTI:	0.51	2.53	0.78	3.90	N/A	N/A	N/A	N/A	N/A	N/A
	DART:	1.03	5.13	1.49	7.45	N/A	N/A	N/A	N/A	N/A	N/A
	RCRD:	2.20	11.00	3.17	15.84	N/A	N/A	N/A	N/A	N/A	N/A
Asia Pacific Water (Asia / Australia)	LTI:	0.42	2.12	0.30	1.15	N/A	N/A	N/A	N/A	N/A	N/A
	DART:	0.56	2.79	0.41	2.04	N/A	N/A	N/A	N/A	N/A	N/A
	RCRD:	1.32	6.62	1.53	7.64	N/A	N/A	N/A	N/A	N/A	N/A
INDUSTRY TOTALS	LTI:	0.65	3.27	0.99	4.94	0.91	4.44	0.74	3.70	1.04	5.22
	DART:	1.20	5.99	1.68	8.40	1.91	9.53	1.35	6.73	1.78	8.88
	RCRD:	2.34	11.72	3.66	18.28	3.52	17.62	3.09	15.46	4.09	20.44

INCD = Incidence Rate (200,000 manhours):
 $LTI\ INCD\ Rate = (LTI + FTLs) * 200000 / Total\ Manhours$
 $DART\ INCD\ Rate = (RWC + LTI + FTL) * 200000 / Total\ Manhours$
 $RCRD\ INCD\ Rate = (MTOs + RWCs + LTI + FTLs) * 200000 / Total\ Manhours$
 FREQ = Frequency Rate (1,000,000 manhours):
 $LTI\ FREQ\ Rate = (LTI + FTLs) * 1000000 / Total\ Manhours$
 $DART\ FREQ\ Rate = (RWC + LTI + FTL) * 1000000 / Total\ Manhours$
 $RCRD\ FREQ\ Rate = (MTOs + RWCs + LTI + FTLs) * 1000000 / Total\ Manhours$



IADC 2002 Industry Totals (Table 3)

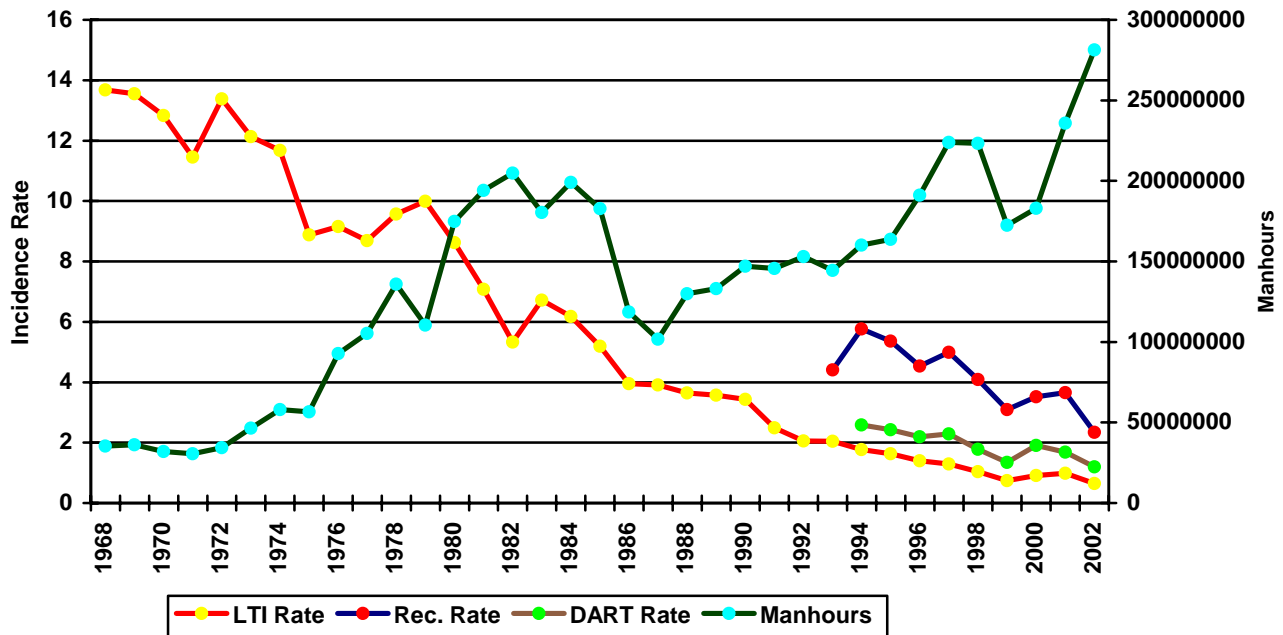
	<u>Land</u>	<u>Water</u>	<u>Total</u>
Total Manhours	140,377,844.00	140,973,108.00	281,350,992.00
Total Medical Treatment Incidents	1015	596	1611
Total Restricted Work Incidents	476	290	766
Total Lost Time Incidents	579	326	905
Total Fatalities	10	5	15
Total Recordables	2080	1217	3297
MTO Incidence Rate	1.45	0.85	1.15
RWC Incidence Rate	0.38	0.41	0.54
LTI Incidence Rate	0.84	0.47	0.65
LTI Frequency Rate	4.20	2.35	3.27
DART Incidence Rate	1.52	0.88	1.20
DART Frequency Rate	7.59	4.41	5.99
Recordable Incidence Rate	2.96	1.73	2.34
Recordable Frequency Rate	14.82	8.63	11.72

Companies Reporting: Land – 83; Water - 36

Medical Treatment Incidence Rate = MTOs X 200,000
 Restricted Work Incidence Rate = RWCs X 200,000
 Lost Time Incidence Rate = LTIs X 200,000
 DART Incidence Rate = LTIs + RWC X 200,000
 Recordable Incidence Rate = RCRD X 200,000

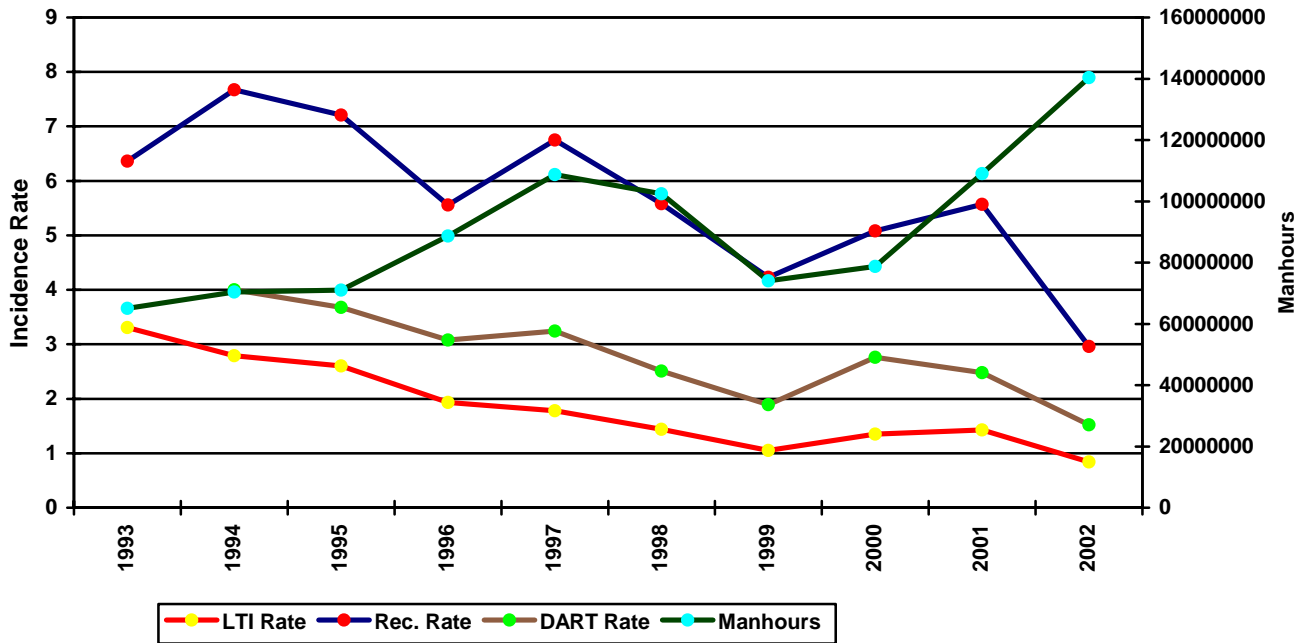
Lost Time Frequency Rate = LTIs X 1,000,000
 DART Frequency Rate = LTIs + RWC X 1,000,000
 Recordable Frequency Rate = RCRD X 1,000,000

Total Industry LTI & Recordable Incidence Rates vs Manhours (Figure 1)

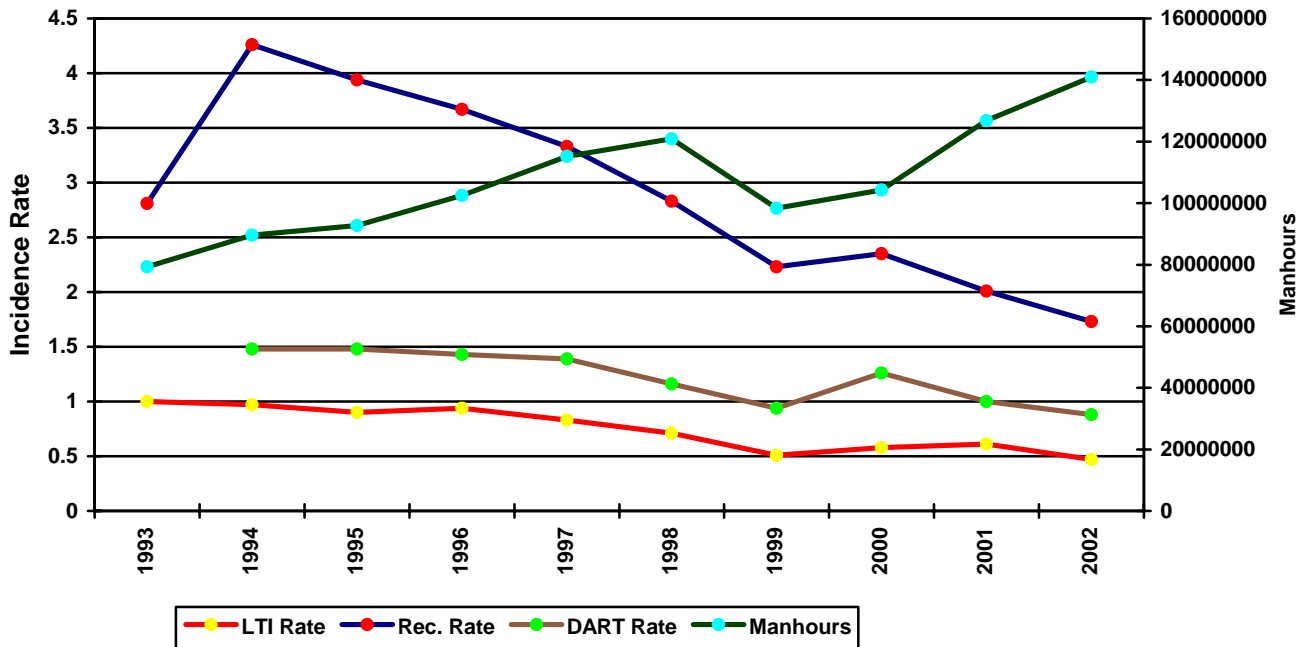




Total Industry Land LTI & Recordable Incidence Rates vs Manhours (Figure 2)



Total Industry Water LTI & Recordable Incidence Rates vs Manhours (Figure 3)

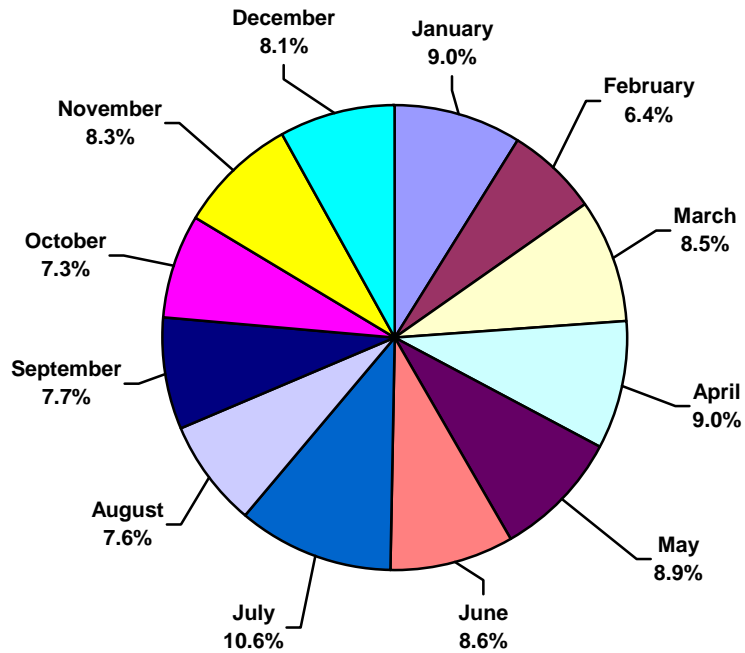




IADC 2002 Total Industry Charts

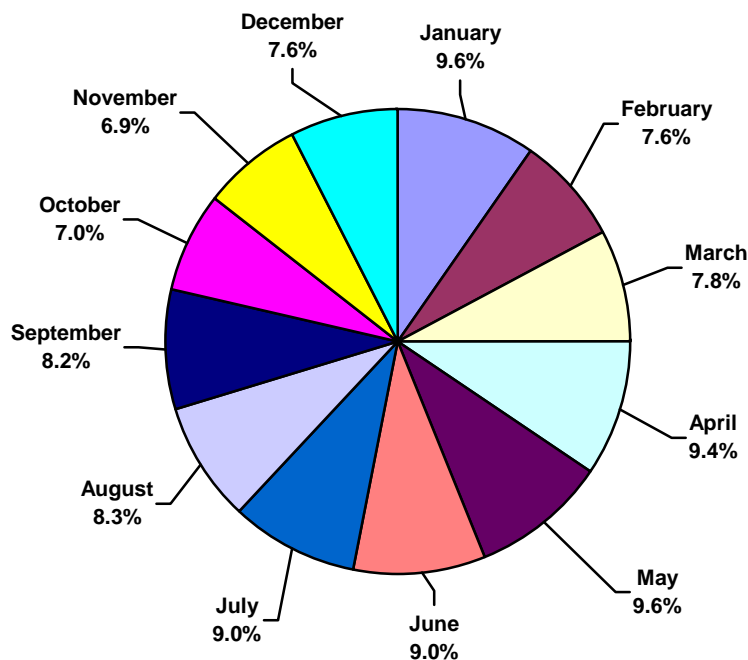
Total Industry Lost Time Incidents by Month (Chart 1)

Based on 905 Incidents



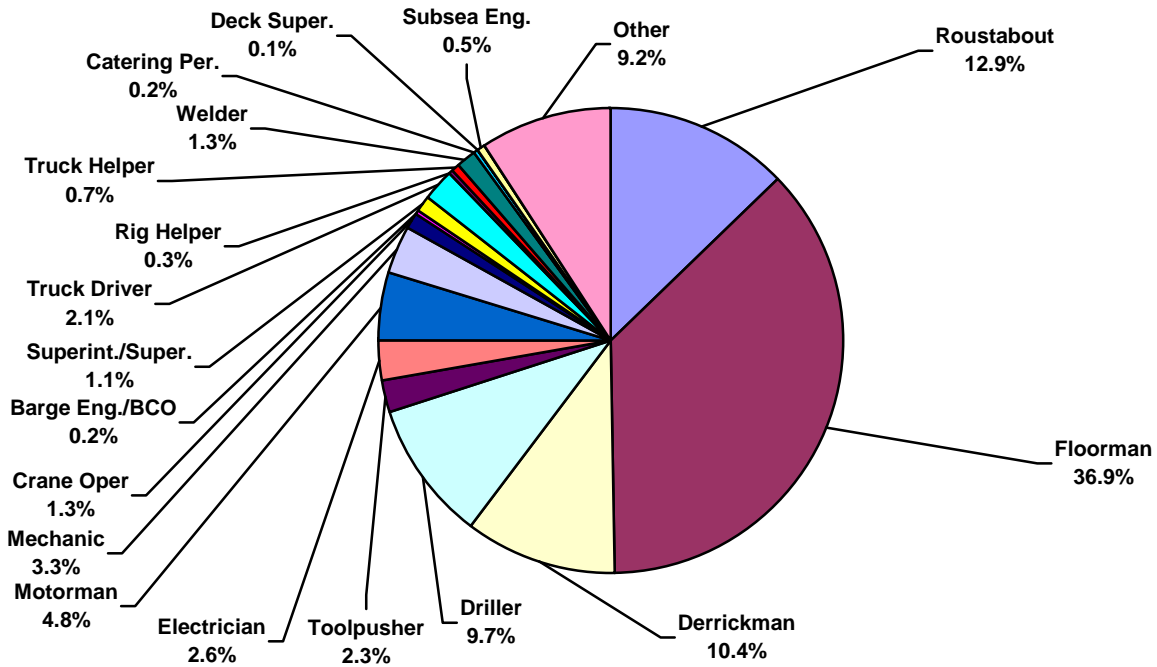
Total Industry Recordable Incidents by Month (Chart 2)

Based on 3297 Incidents

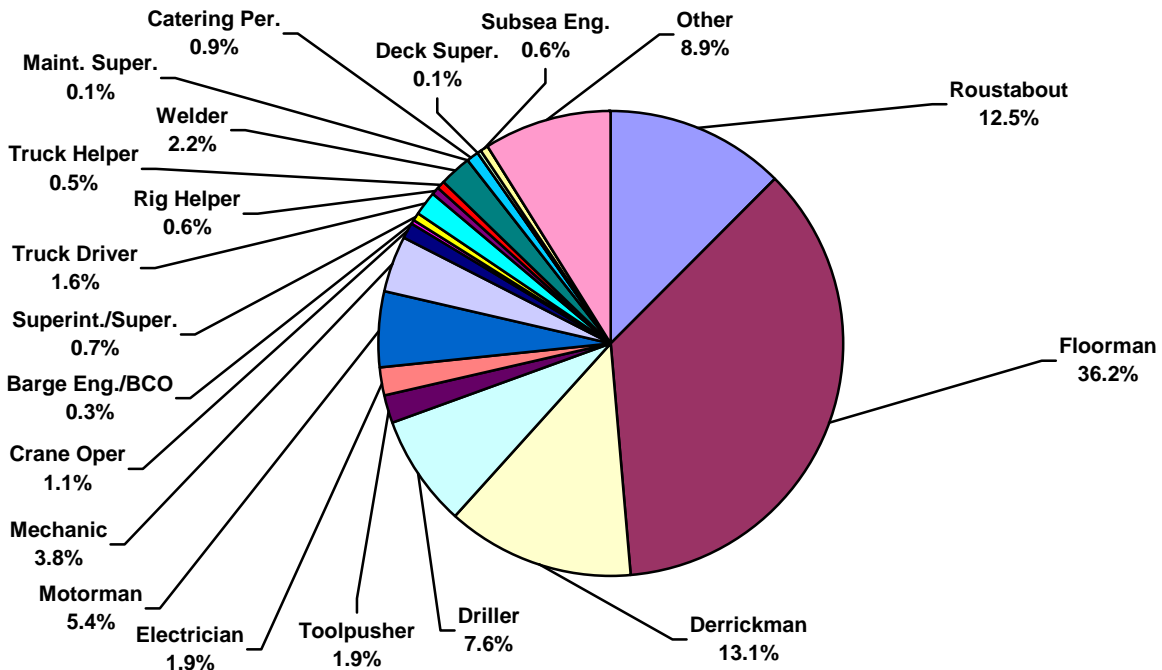




Total Industry Lost Time Incidents by Occupation (Chart 3)
Based on 905 Incidents

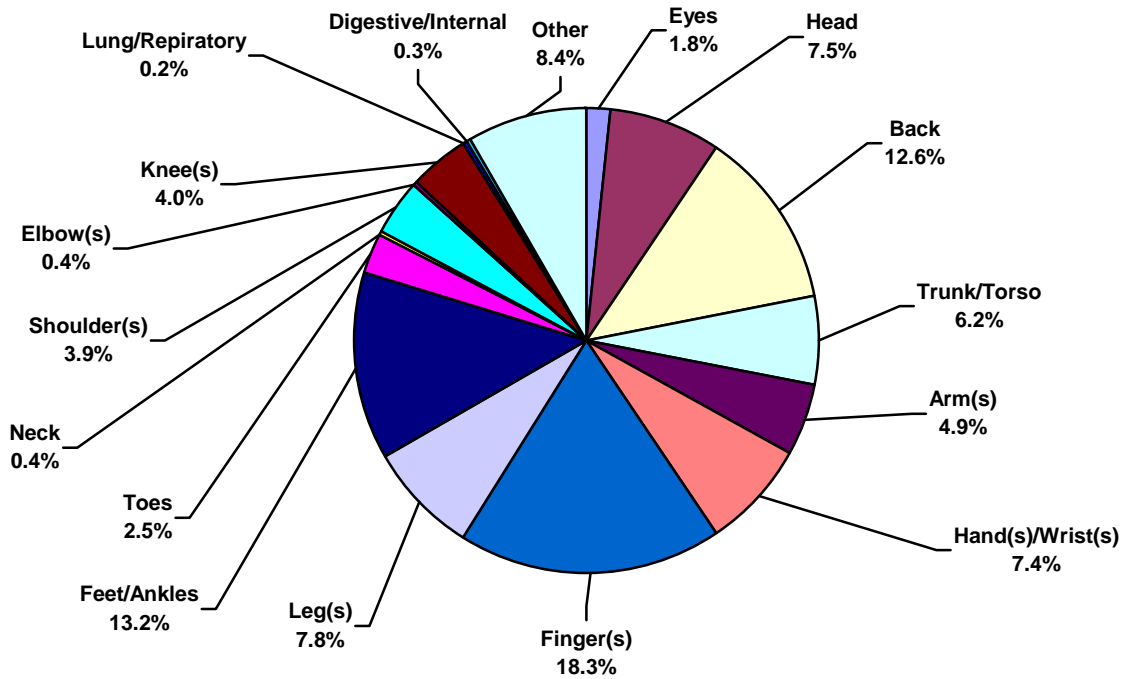


Total Industry Recordable Incidents by Occupation (Chart 4)
Based on 3297 Incidents

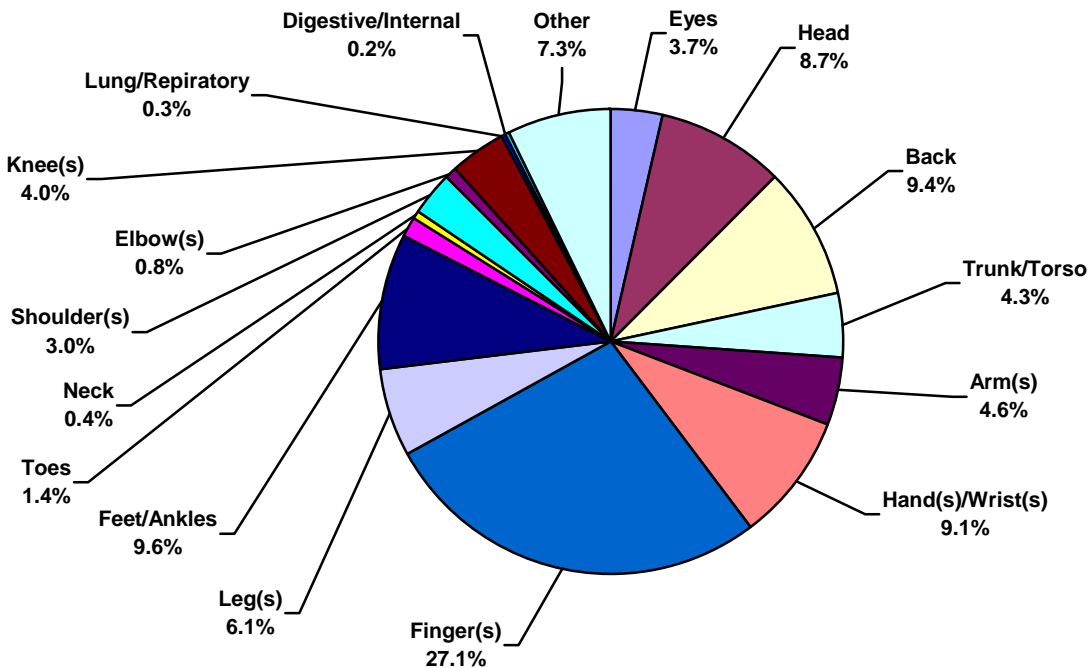




Total Industry Lost Time Incidents by Body Part (Chart 5)
Based on 905 Incidents

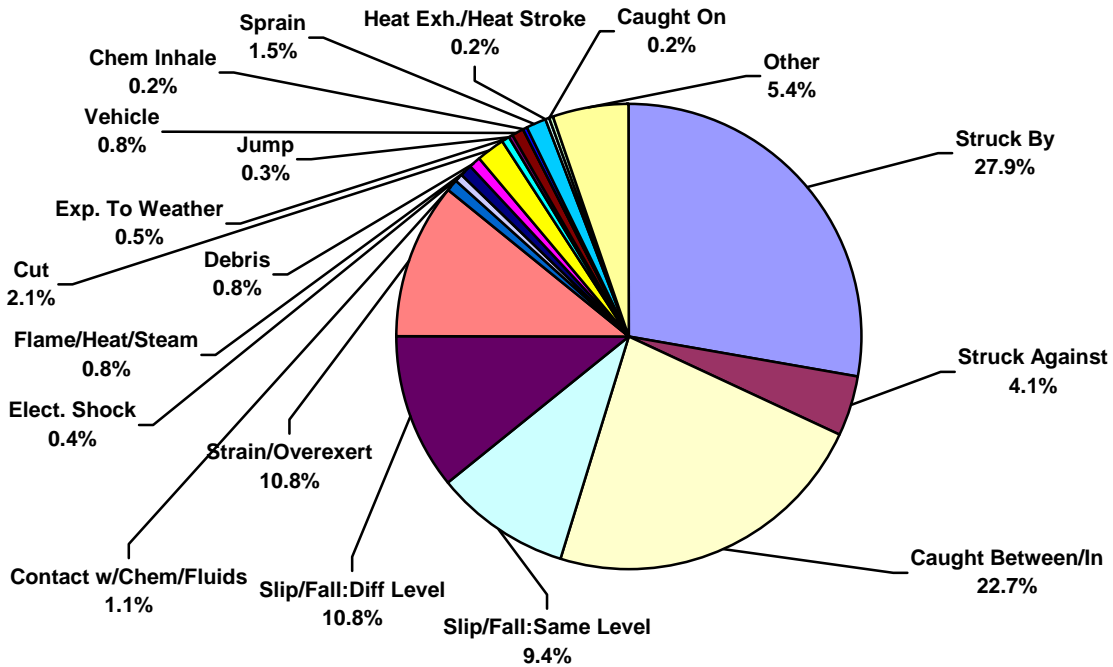


Total Industry Recordable Incidents by Body Part (Chart 6)
Based on 3297 Incidents

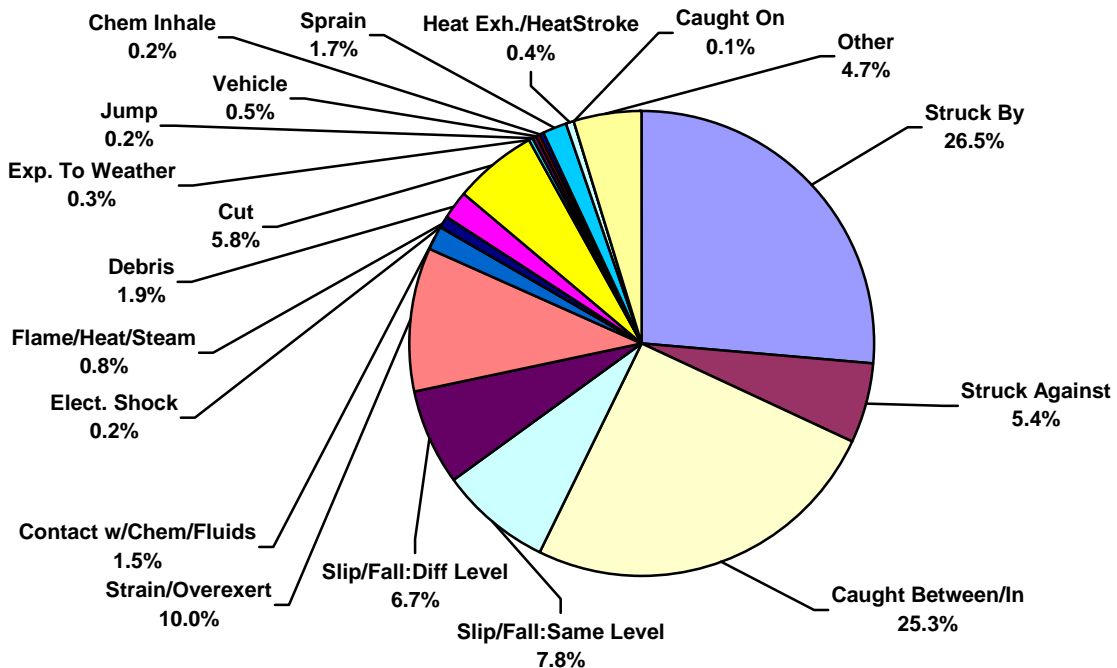




Total Industry Lost Time Incidents by Incident Type (Chart 7)
Based on 905 Incidents

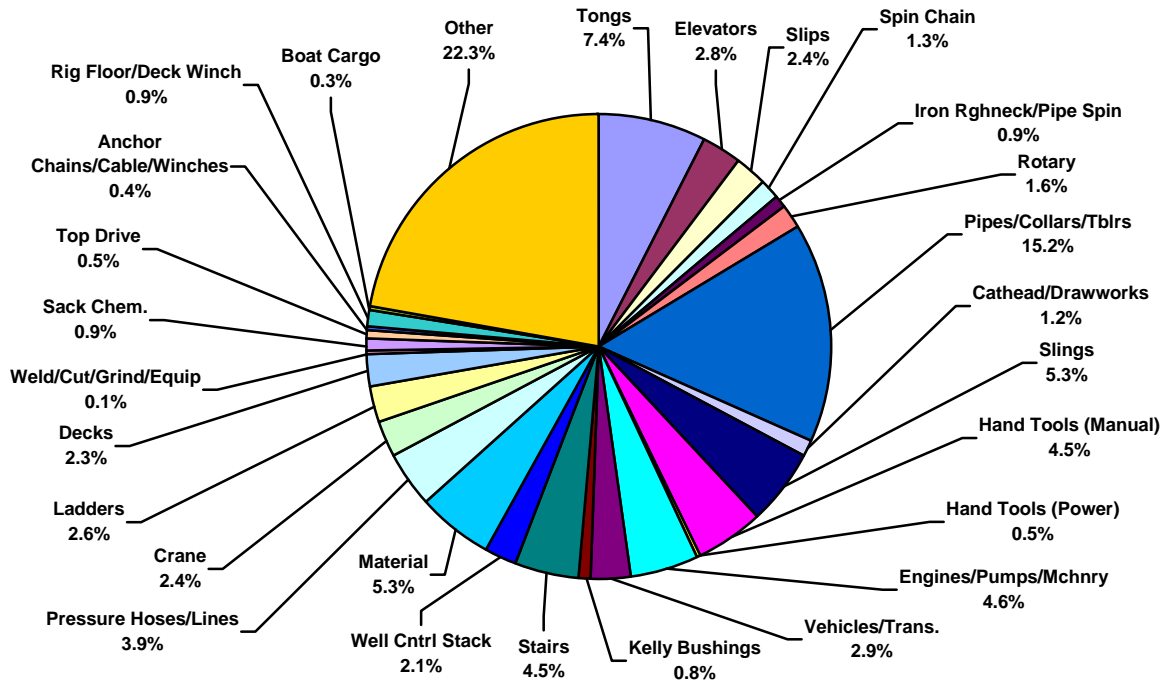


Total Industry Recordable Incidents by Incident Type (Chart 8)
Based on 3297 Incidents

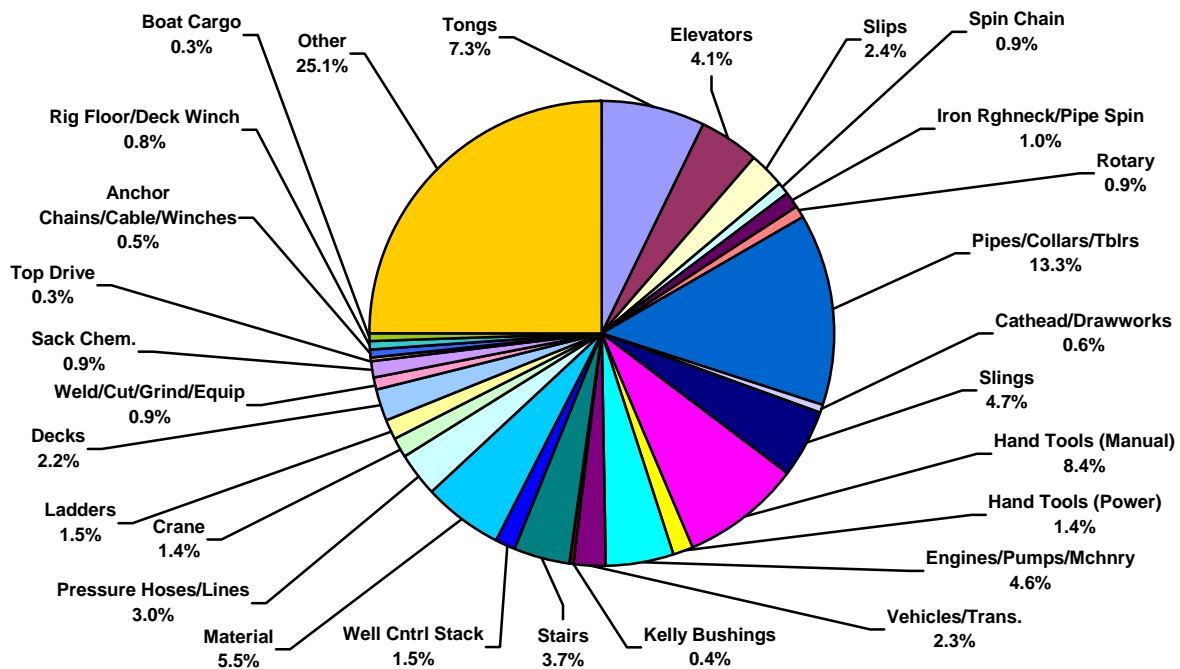




Total Industry Lost Time Incidents by Equipment (Chart 9)
Based on 905 Incidents

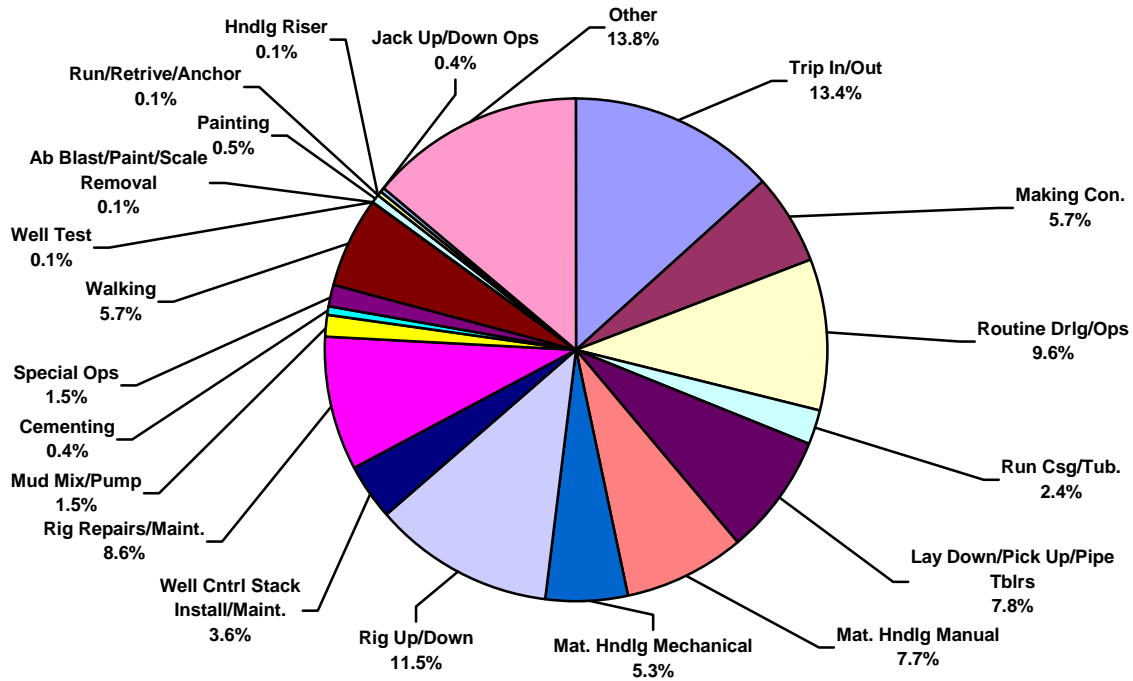


Total Industry Recordable Incidents by Equipment (Chart 10)
Based on 3297 Incidents

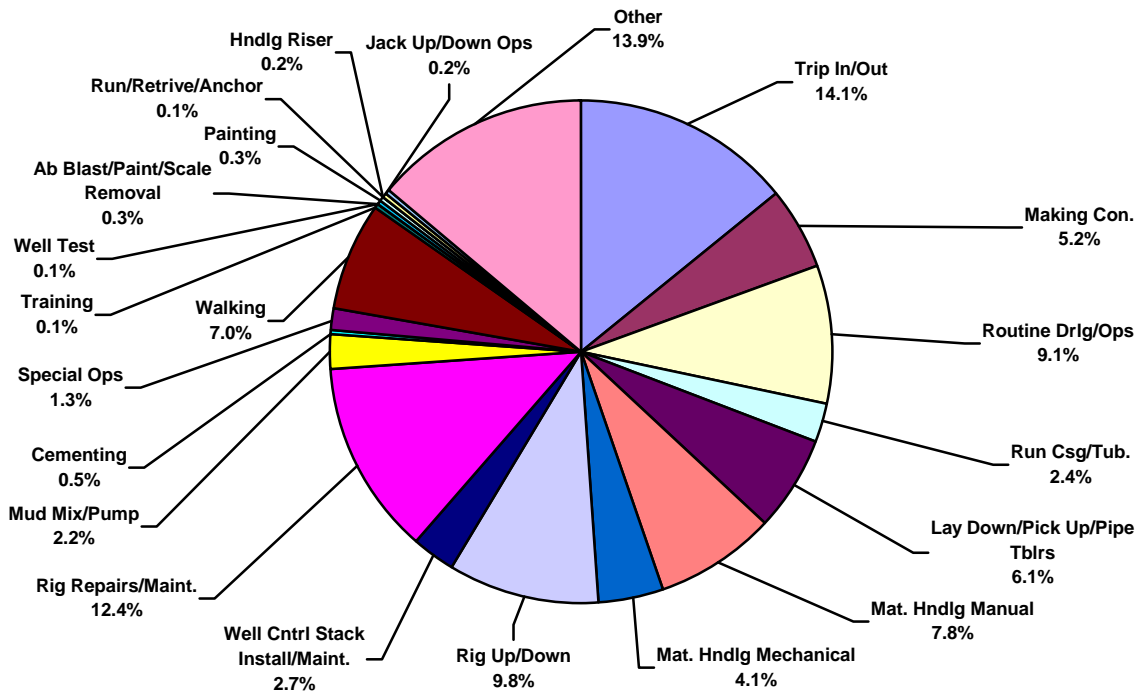




Total Industry Lost Time Incidents by Operation (Chart 11)
Based on 905 Incidents

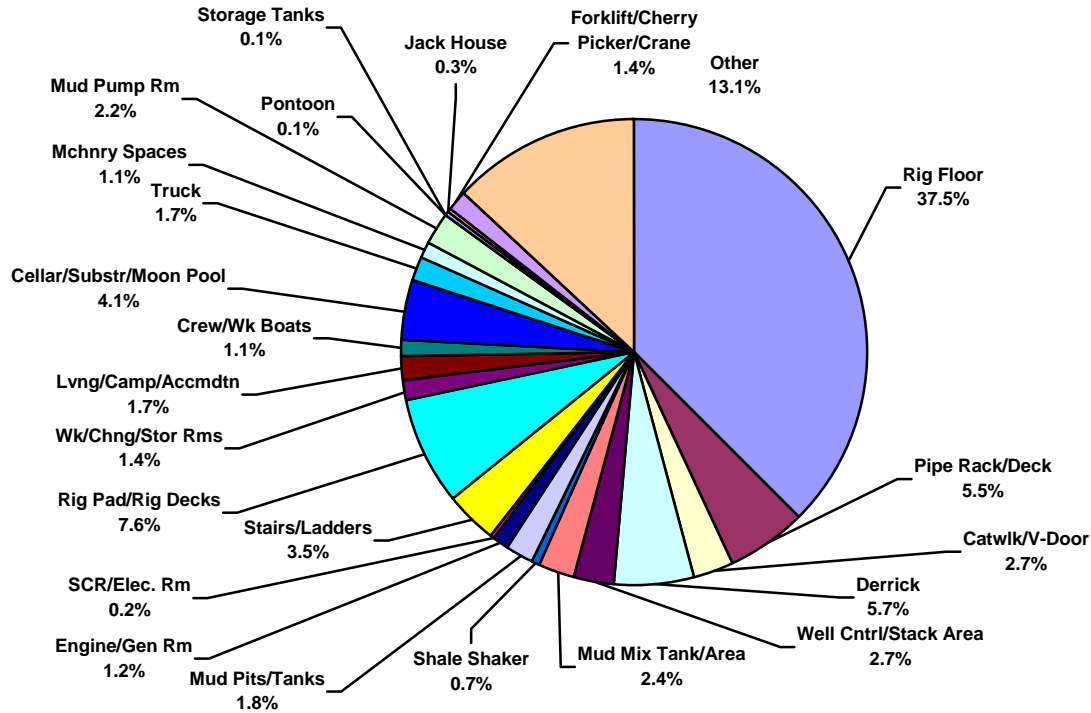


Total Industry Recordable Incidents by Operation (Chart 12)
Based on 3297 Incidents

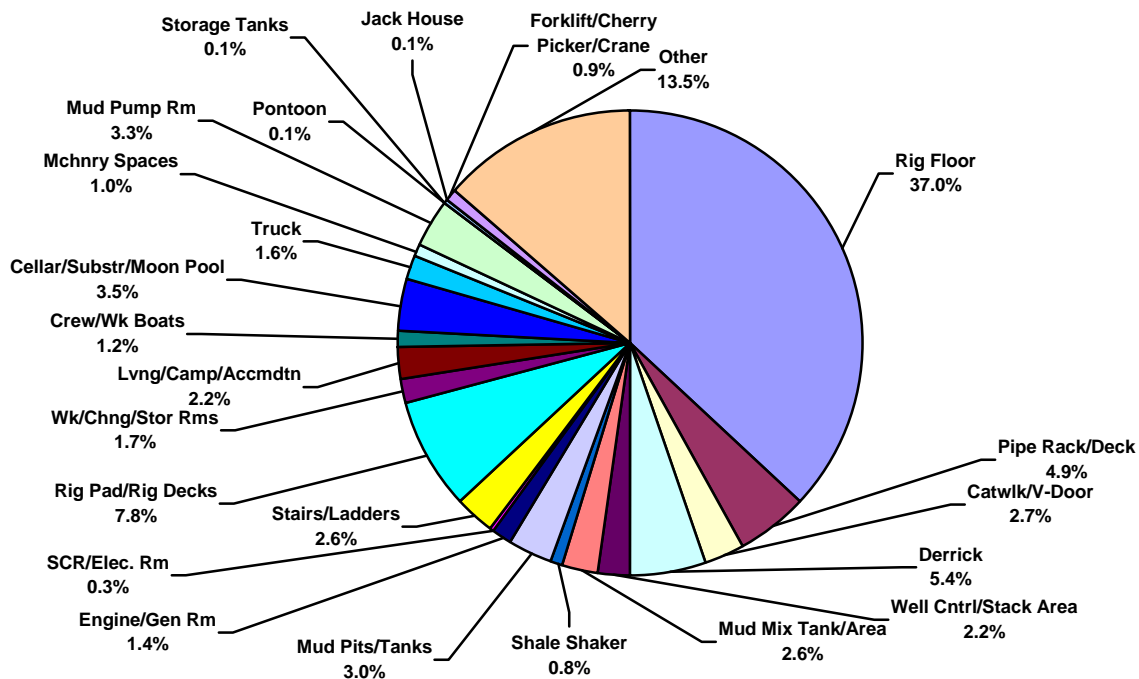




Total Industry Lost Time Incidents by Location (Chart 13)
Based on 905 Incidents

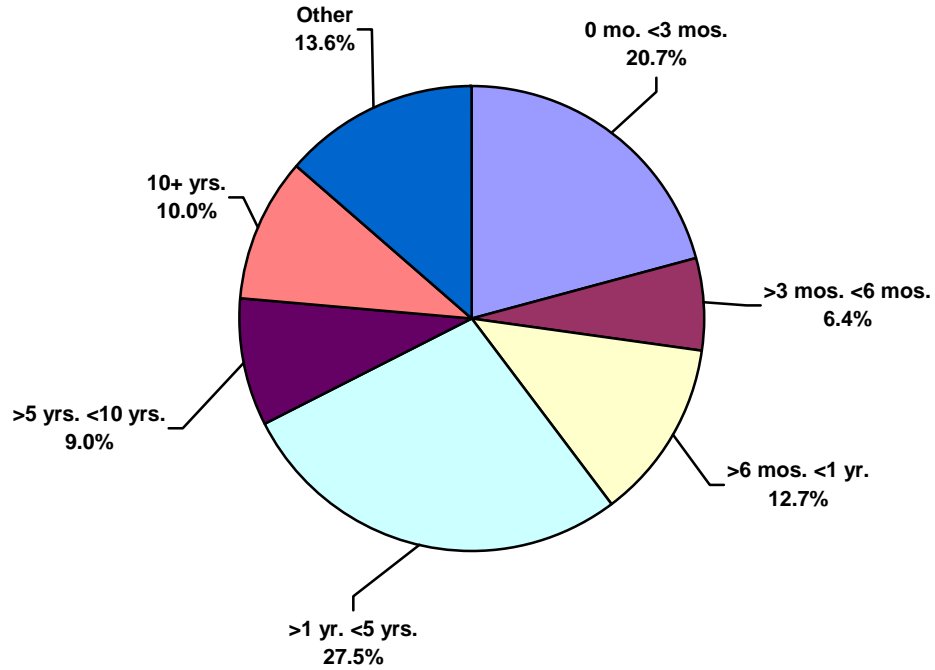


Total Industry Recordable Incidents by Location (Chart 14)
Based on 3297 Incidents

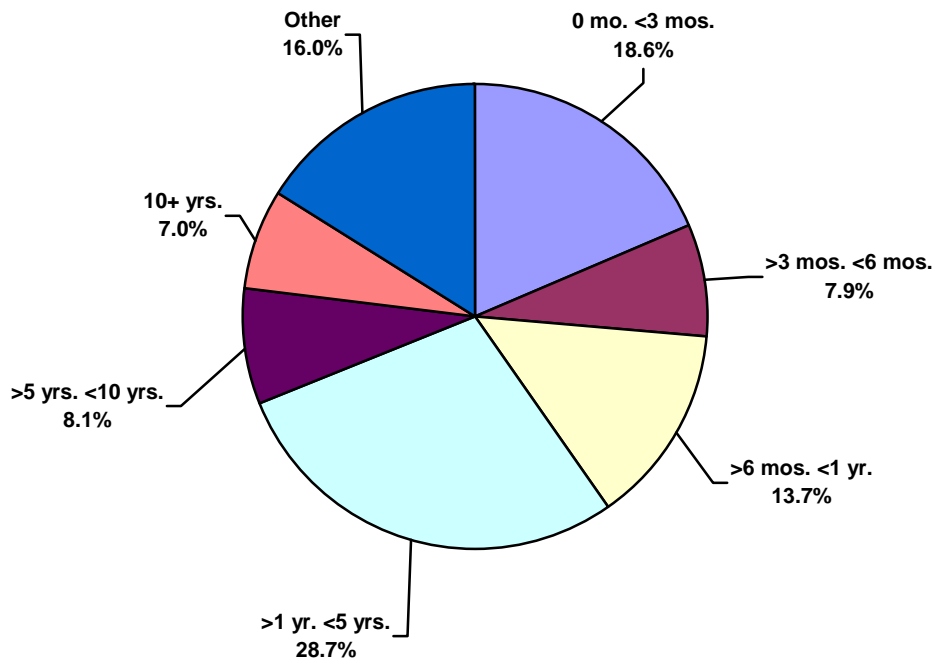




Total Industry Lost Time Incidents by Time in Service (Chart 15)
Based on 905 Incidents

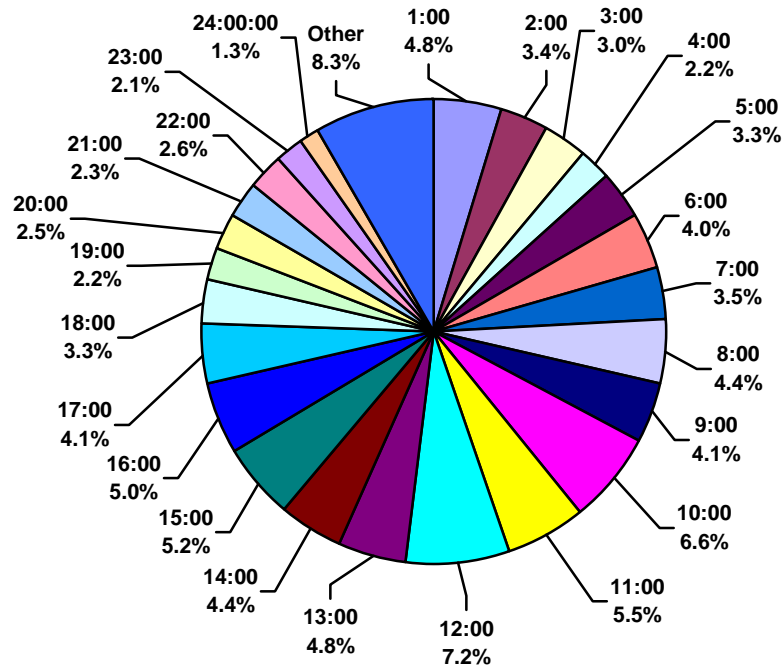


Total Industry Recordable Incidents by Time in Service (Chart 16)
Based on 3297 Incidents

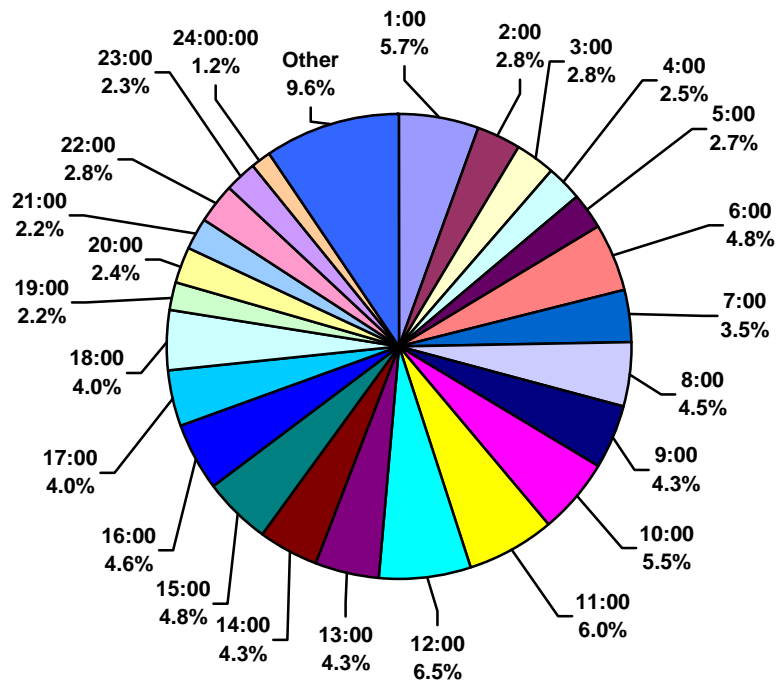




Total Industry Lost Time Incidents by Time of Day (Chart 17)
Based on 905 Incidents



Total Industry Recordable Incidents by Time of Day (Chart 18)
Based on 3297 Incidents





2002 ASP Program Regional Totals Combined Land & Water



IADC 2002 US Totals (Table 4)

	<u>Land</u>	<u>Water</u>	<u>Total</u>
Total Manhours	42,291,515.00	40,428,840.00	82,720,355.00
Total Medical Treatment Incidents	677	217	894
Total Restricted Work Incidents	278	128	406
Total Lost Time Incidents	356	101	457
Total Fatalities	9	1	10
Total Recordables	1320	447	1767
MTO Incidence Rate	3.20	1.07	2.16
RWC Incidence Rate	1.31	0.63	0.98
LTI Incidence Rate	1.73	0.50	1.13
LTI Frequency Rate	8.63	2.52	5.66
DART Incidence Rate	3.04	1.14	2.11
DART Frequency Rate	15.20	5.69	10.55
Recordable Incidence Rate	6.24	2.21	4.27
Recordable Frequency Rate	31.21	11.06	21.36

Companies Reporting: Land – 55; Water - 16

Medical Treatment Incidence Rate = MTOs X 200,000

Restricted Work Incidence Rate = RWCs X 200,000

Lost Time Incidence Rate = LTIs X 200,000

DART Incidence Rate = LTIs + RWC X 200,000

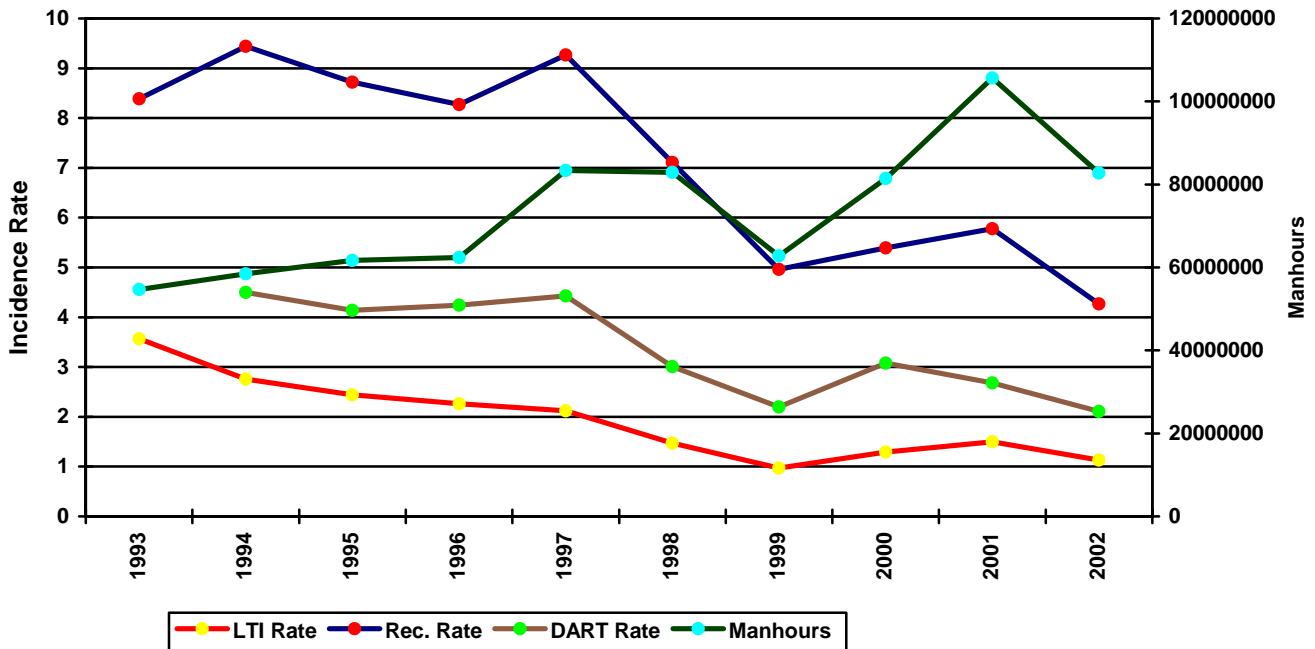
Recordable Incidence Rate = RCRD X 200,000

Lost Time Frequency Rate = LTIs X 1,000,000

DART Frequency Rate = LTIs + RWC X 1,000,000

Recordable Frequency Rate = RCRD X 1,000,000

US Total LTI & Recordable Incidence Rates vs Manhours (Figure 4)





IADC 2002 European Totals (Table 5)

	<u>Land</u>	<u>Water</u>	<u>Total</u>
Total Manhours	5,108,958.00	25,112,371.00	30,221,329.00
Total Medical Treatment Incidents	24	97	121
Total Restricted Work Incidents	16	34	50
Total Lost Time Incidents	24	59	83
Total Fatalities	0	3	3
Total Recordables	64	193	257
MTO Incidence Rate	0.94	0.77	0.80
RWC Incidence Rate	0.63	0.27	0.33
LTI Incidence Rate	0.94	0.49	0.57
LTI Frequency Rate	4.70	2.47	2.85
DART Incidence Rate	1.57	0.76	0.90
DART Frequency Rate	7.83	3.82	4.50
Recordable Incidence Rate	2.51	1.54	1.70
Recordable Frequency Rate	12.53	7.69	8.50

Companies Reporting: Land – 6; Water - 15

Medical Treatment Incidence Rate = MTOs X 200,000

Restricted Work Incidence Rate = RWCs X 200,000

Lost Time Incidence Rate = LTIs X 200,000

DART Incidence Rate = LTIs + RWC X 200,000

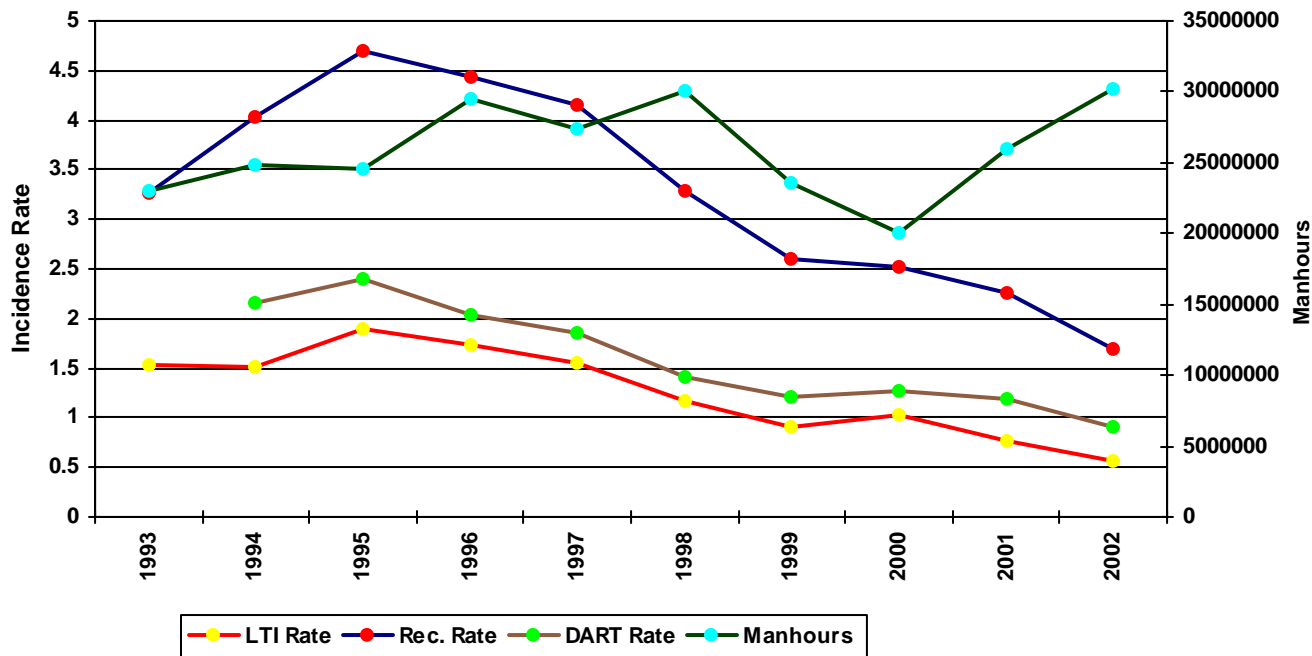
Recordable Incidence Rate = RCRD X 200,000

Lost Time Frequency Rate = LTIs X 1,000,000

DART Frequency Rate = LTIs + RWC X 1,000,000

Recordable Frequency Rate = RCRD X 1,000,000

European Total LTI & Recordable Incidence Rates vs Manhours (Figure 5)





IADC 2002 International Totals (Table 6)

**In 2001 this category was broken up in to the various regions that follow on the next several pages.*

	<u>Land</u>	<u>Water</u>	<u>Total</u>
Total Manhours	92,977,411.00	75,431,897.00	168,409,308.00
Total Medical Treatment Incidents	314	282	596
Total Restricted Work Incidents	182	128	310
Total Lost Time Incidents	199	166	365
Total Fatalities	1	1	2
Total Recordables	696	577	1,273
MTO Incidence Rate	0.68	0.75	0.71
RWC Incidence Rate	0.39	0.34	0.37
LTI Incidence Rate	0.43	0.44	0.44
LTI Frequency Rate	2.15	2.21	2.18
DART Incidence Rate	0.82	0.78	0.80
DART Frequency Rate	4.11	3.91	4.02
Recordable Incidence Rate	1.50	1.53	1.51
Recordable Frequency Rate	7.49	7.65	7.56

Companies Reporting: Land – 30; Water - 31

Medical Treatment Incidence Rate = MTOs X 200,000

Restricted Work Incidence Rate = RWCs X 200,000

Lost Time Incidence Rate = LTIs X 200,000

DART Incidence Rate = LTIs + RWC X 200,000

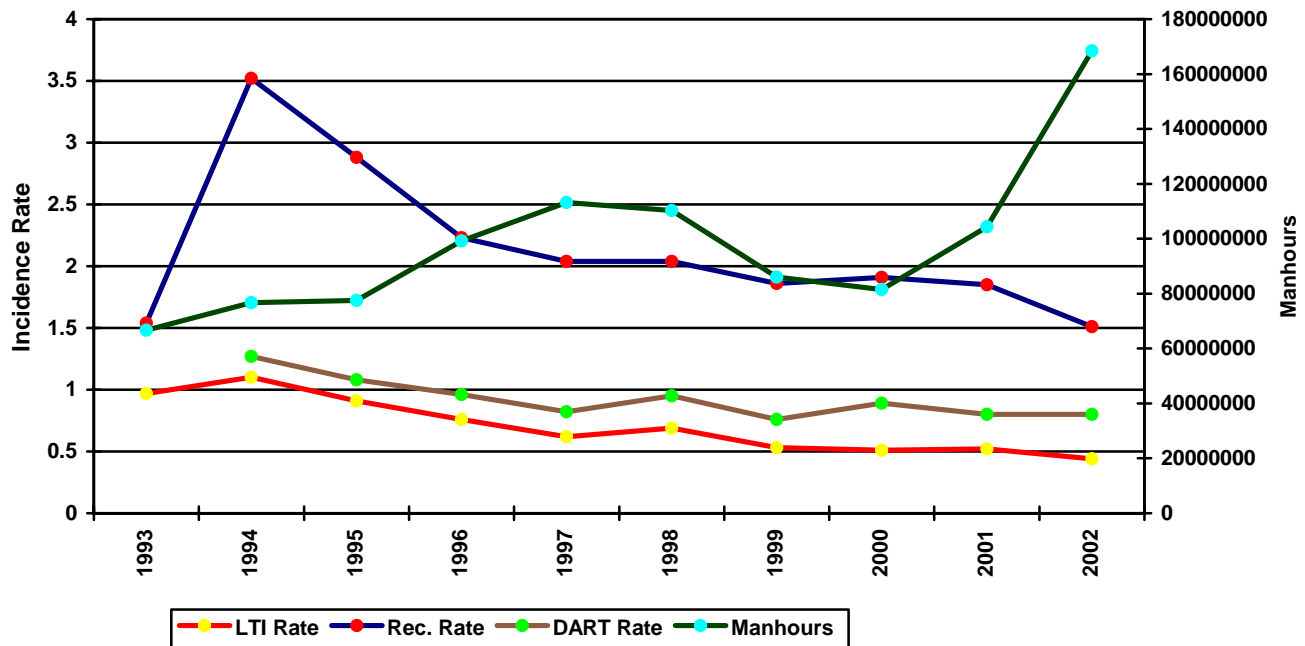
Recordable Incidence Rate = RCRD X 200,000

Lost Time Frequency Rate = LTIs X 1,000,000

DART Frequency Rate = LTIs + RWC X 1,000,000

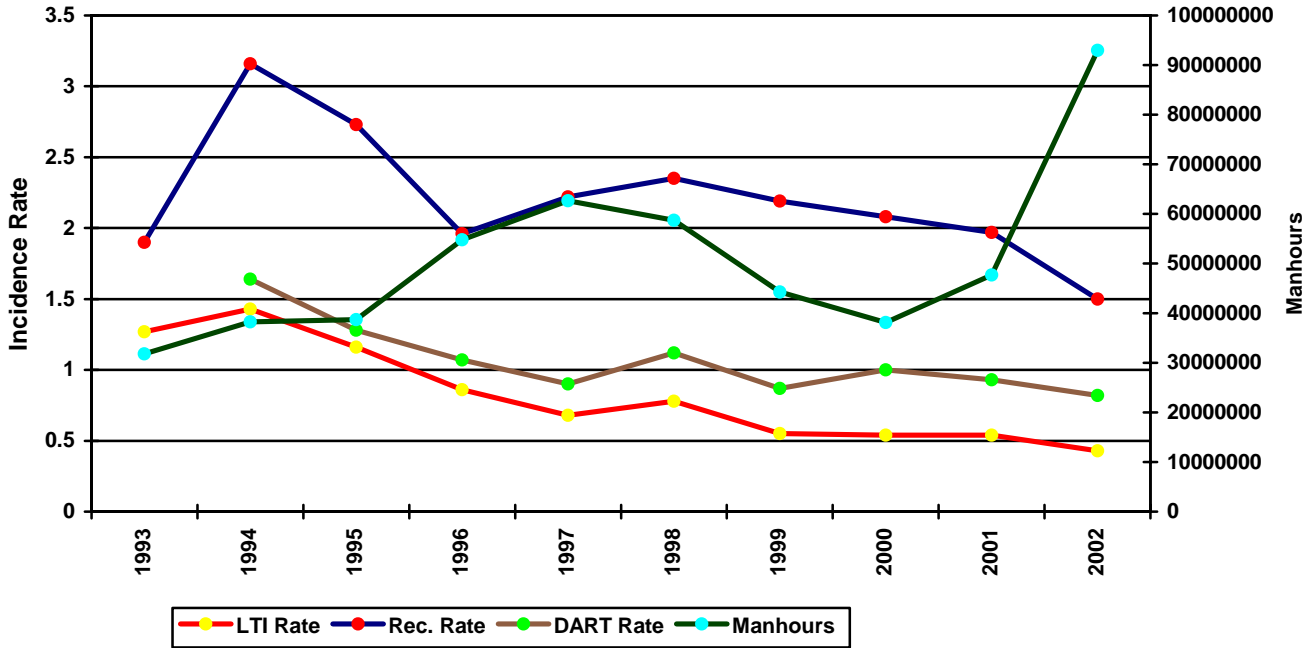
Recordable Frequency Rate = RCRD X 1,000,000

Total International LTI & Recordable Incidence Rates vs Manhours (Figure 6)

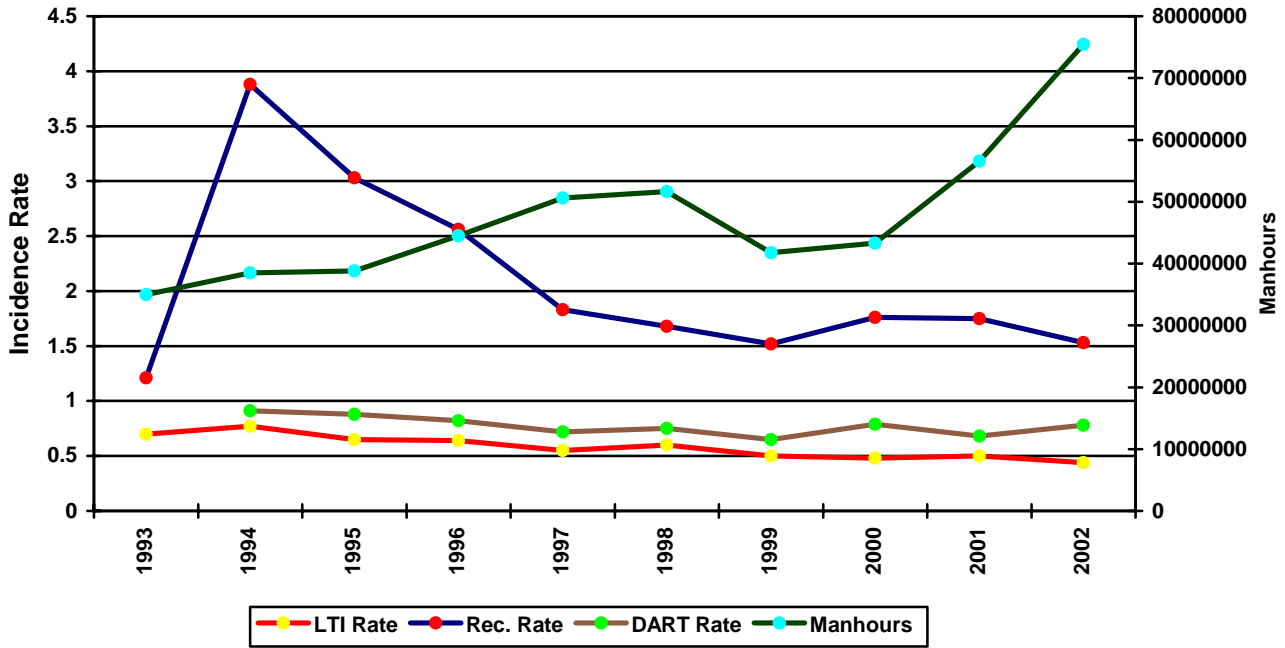




International Land LTI & Recordable Incidence Rates vs Manhours (Figure 7)



International Water LTI & Recordable Incidence Rates vs Manhours (Figure 8)





IADC 2002 Canada Totals (Table 7)

	<u>Land</u>	<u>Water</u>	<u>Total</u>
Total Manhours	1,662,362.00	1,315,029.00	2,977,391.00
Total Medical Treatment Incidents	36	11	47
Total Restricted Work Incidents	2	2	4
Total Lost Time Incidents	9	7	16
Total Fatalities	1	0	1
Total Recordables	48	20	68
MTO Incidence Rate	4.33	1.67	3.16
RWC Incidence Rate	0.24	0.30	0.27
LTI Incidence Rate	1.20	1.06	1.14
LTI Frequency Rate	6.02	5.32	5.71
DART Incidence Rate	1.44	1.37	1.41
DART Frequency Rate	7.22	6.84	7.05
Recordable Incidence Rate	5.77	3.04	4.57
Recordable Frequency Rate	28.87	15.21	22.84

Companies Reporting: Land – 1; Water - 4

Medical Treatment Incidence Rate = MTOs X 200,000

Restricted Work Incidence Rate = RWCs X 200,000

Lost Time Incidence Rate = LTIs X 200,000

DART Incidence Rate = LTIs + RWC X 200,000

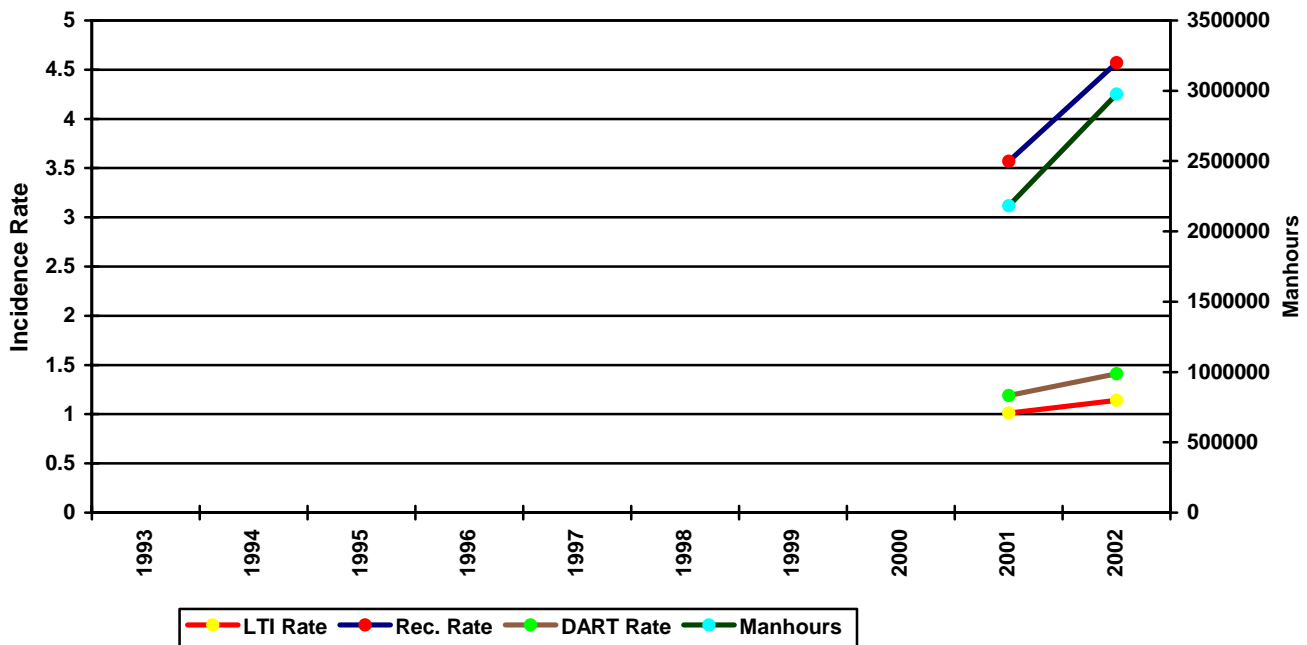
Recordable Incidence Rate = RCRD X 200,000

Lost Time Frequency Rate = LTIs X 1,000,000

DART Frequency Rate = LTIs + RWC X 1,000,000

Recordable Frequency Rate = RCRD X 1,000,000

Canada Total LTI & Recordable Incidence Rates vs Manhours (Figure 9)





IADC 2002 Central South America Totals (Table 8)

	<u>Land</u>	<u>Water</u>	<u>Total</u>
Total Manhours	32,352,996.00	14,552,495.00	46,905,491.00
Total Medical Treatment Incidents	66	63	129
Total Restricted Work Incidents	71	49	120
Total Lost Time Incidents	54	31	85
Total Fatalities	0	1	1
Total Recordables	191	144	335
MTO Incidence Rate	0.41	0.87	0.55
RWC Incidence Rate	0.44	0.67	0.51
LTI Incidence Rate	0.33	0.44	0.37
LTI Frequency Rate	1.67	2.20	1.83
DART Incidence Rate	0.77	1.11	0.88
DART Frequency Rate	3.86	5.57	4.39
Recordable Incidence Rate	1.18	1.98	1.43
Recordable Frequency Rate	5.90	9.90	7.14

Companies Reporting: Land – 15; Water - 10

Medical Treatment Incidence Rate = MTOs X 200,000

Restricted Work Incidence Rate = RWCs X 200,000

Lost Time Incidence Rate = LTIs X 200,000

DART Incidence Rate = LTIs + RWC X 200,000

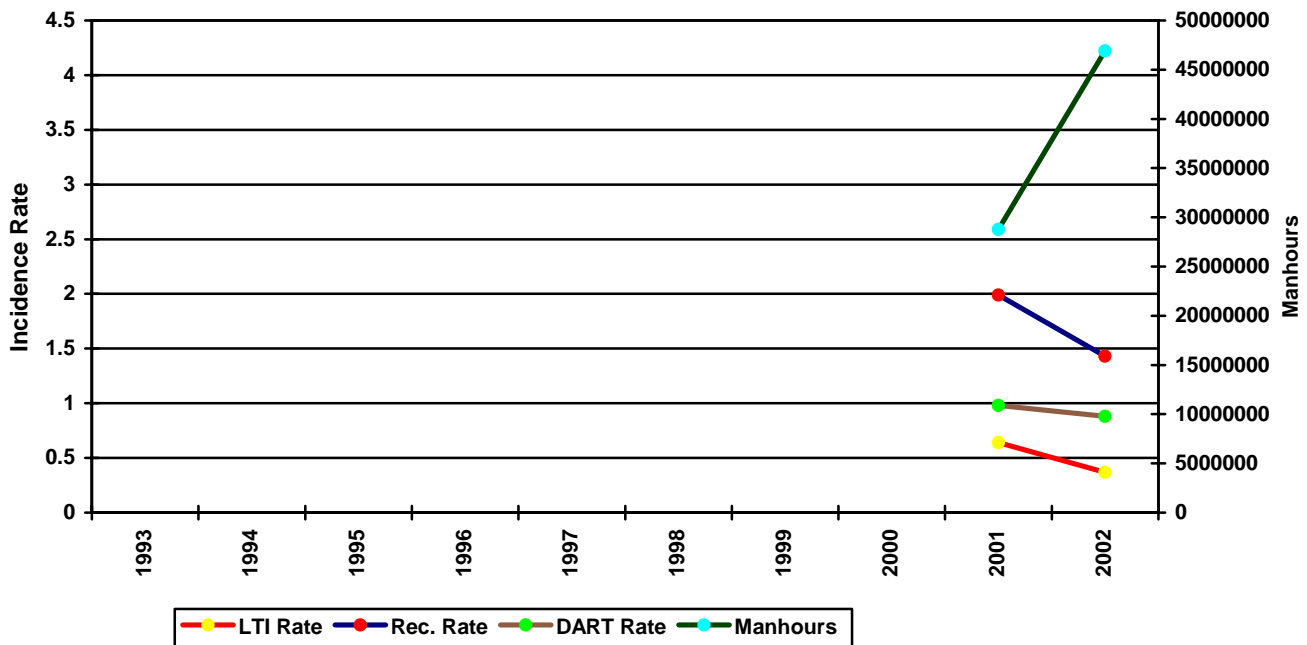
Recordable Incidence Rate = RCRD X 200,000

Lost Time Frequency Rate = LTIs X 1,000,000

DART Frequency Rate = LTIs + RWC X 1,000,000

Recordable Frequency Rate = RCRD X 1,000,000

Central/South America Total LTI & Recordable Incidence Rates vs Manhours (Figure 10)





IADC 2002 Africa Totals (Table 9)

	<u>Land</u>	<u>Water</u>	<u>Total</u>
Total Manhours	12,932,431.00	19,649,637.00	32,582,068.00
Total Medical Treatment Incidents	57	77	134
Total Restricted Work Incidents	16	34	50
Total Lost Time Incidents	57	43	100
Total Fatalities	0	0	0
Total Recordables	130	154	284
MTO Incidence Rate	0.88	0.78	0.82
RWC Incidence Rate	0.25	0.35	0.31
LTI Incidence Rate	0.88	0.44	0.61
LTI Frequency Rate	4.41	2.19	3.07
DART Incidence Rate	1.13	0.78	0.92
DART Frequency Rate	5.64	3.92	4.60
Recordable Incidence Rate	2.01	1.57	1.74
Recordable Frequency Rate	10.05	7.84	8.72

Companies Reporting: Land – 12; Water - 16

Medical Treatment Incidence Rate = MTOs X 200,000

Restricted Work Incidence Rate = RWCs X 200,000

Lost Time Incidence Rate = LTIs X 200,000

DART Incidence Rate = LTIs + RWC X 200,000

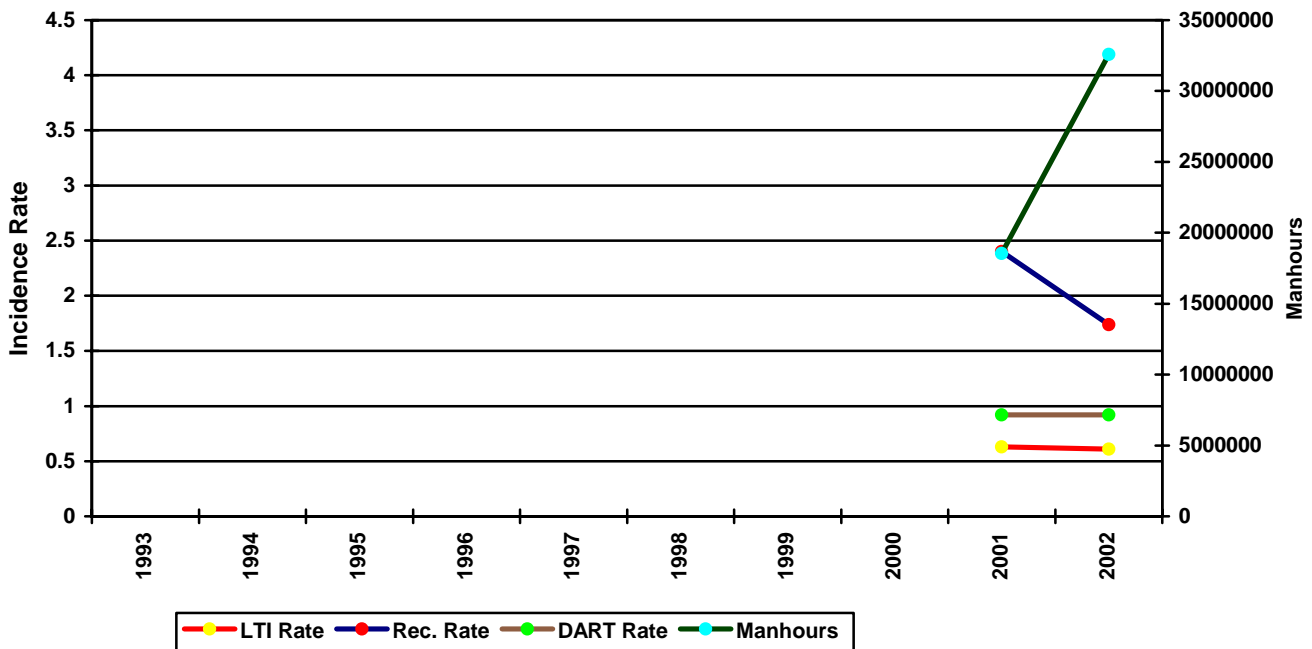
Recordable Incidence Rate = RCRD X 200,000

Lost Time Frequency Rate = LTIs X 1,000,000

DART Frequency Rate = LTIs + RWC X 1,000,000

Recordable Frequency Rate = RCRD X 1,000,000

Africa Total LTI & Recordable Incidence Rates vs Manhours (Figure 11)





IADC 2002 Middle East Totals (Table 10)

	<u>Land</u>	<u>Water</u>	<u>Total</u>
Total Manhours	32,570,937.00	17,701,580.00	50,272,517.00
Total Medical Treatment Incidents	76	46	122
Total Restricted Work Incidents	58	28	86
Total Lost Time Incidents	45	38	83
Total Fatalities	0	0	0
Total Recordables	179	112	291
MTO Incidence Rate	0.47	0.52	0.49
RWC Incidence Rate	0.36	0.32	0.34
LTI Incidence Rate	0.28	0.43	0.33
LTI Frequency Rate	1.38	2.15	1.65
DART Incidence Rate	0.63	0.75	0.67
DART Frequency Rate	3.16	3.73	3.36
Recordable Incidence Rate	1.10	1.27	1.16
Recordable Frequency Rate	5.50	6.33	5.79

Companies Reporting: Land – 15; Water - 16

Medical Treatment Incidence Rate = MTOs X 200,000

Restricted Work Incidence Rate = RWCs X 200,000

Lost Time Incidence Rate = LTIs X 200,000

DART Incidence Rate = LTIs + RWC X 200,000

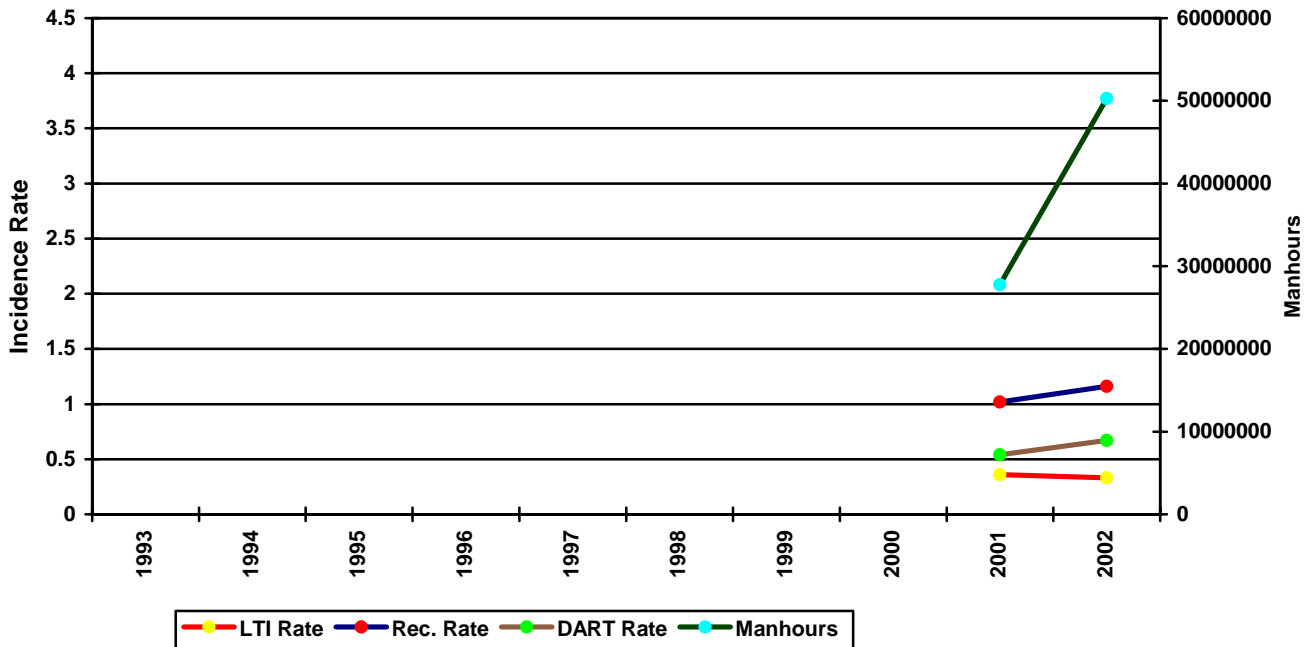
Recordable Incidence Rate = RCRD X 200,000

Lost Time Frequency Rate = LTIs X 1,000,000

DART Frequency Rate = LTIs + RWC X 1,000,000

Recordable Frequency Rate = RCRD X 1,000,000

Middle East Total LTI & Recordable Incidence Rates vs Manhours (Figure 12)





IADC 2002 Asia Pacific Totals (Table 11)

	<u>Land</u>	<u>Water</u>	<u>Total</u>
Total Manhours	13,458,685.00	22,213,156.00	35,671,841.00
Total Medical Treatment Incidents	79	85	164
Total Restricted Work Incidents	35	15	50
Total Lost Time Incidents	34	47	81
Total Fatalities	0	0	0
Total Recordables	148	147	295
MTO Incidence Rate	1.17	0.77	0.92
RWC Incidence Rate	0.52	0.14	0.28
LTI Incidence Rate	0.51	0.42	0.45
LTI Frequency Rate	2.53	2.12	2.27
DART Incidence Rate	1.03	0.56	0.73
DART Frequency Rate	5.13	2.79	3.67
Recordable Incidence Rate	2.20	1.32	1.65
Recordable Frequency Rate	11.00	6.62	8.27

Companies Reporting: Land – 15; Water - 16

Medical Treatment Incidence Rate = MTOs X 200,000

Restricted Work Incidence Rate = RWCs X 200,000

Lost Time Incidence Rate = LTIs X 200,000

DART Incidence Rate = LTIs + RWC X 200,000

Recordable Incidence Rate = RCRD X 200,000

Lost Time Frequency Rate = LTIs X 1,000,000

DART Frequency Rate = LTIs + RWC X 1,000,000

Recordable Frequency Rate = RCRD X 1,000,000

Asia Pacific Total LTI & Recordable Incidence Rates vs Manhours (Figure 13)

