



IADC ASP PROGRAM

2002



Summary of Occupational Incidents (European Water Totals)

Issued 1 May 2003



Table of Contents

(Table of Contents is Hyperlinked, Just click on Topic & go)

2002 ASP PROGRAM EUROPEAN WATER TOTALS	3
IADC 2002 EUROPEAN WATER TOTALS (TABLE 1)	3
<i>European Water Total Incidence Rates vs Manhours (Figure 1).....</i>	<i>3</i>
IADC 2002 EUROPEAN WATER CHARTS.....	4
<i>European Water Total Lost Time Incidents by Month (Chart 1).....</i>	<i>4</i>
<i>European Water Total Recordable Incidents by Month (Chart 2)</i>	<i>4</i>
<i>European Water Total Lost Time Incidents by Occupation (Chart 3).....</i>	<i>5</i>
<i>European Water Total Recordable Incidents by Occupation (Chart 4)</i>	<i>5</i>
<i>European Water Total Lost Time Incidents by Body Part (Chart 5).....</i>	<i>6</i>
<i>European Water Total Recordable Incidents by Body Part (Chart 6).....</i>	<i>6</i>
<i>European Water Total Lost Time Incidents by Incident Type (Chart 7).....</i>	<i>7</i>
<i>European Water Total Recordable Incidents by Incident Type (Chart 8).....</i>	<i>7</i>
<i>European Water Total Lost Time Incidents by Equipment (Chart 9).....</i>	<i>8</i>
<i>European Water Total Recordable Incidents by Equipment (Chart 10).....</i>	<i>8</i>
<i>European Water Total Lost Time Incidents by Operation (Chart 11).....</i>	<i>9</i>
<i>European Water Total Recordable Incidents by Operation (Chart 12).....</i>	<i>9</i>
<i>European Water Total Lost Time Incidents by Location (Chart 13).....</i>	<i>10</i>
<i>European Water Total Recordable Incidents by Location (Chart 14)</i>	<i>10</i>
<i>European Water Total Lost Time Incidents by Time in Service (Chart 15)</i>	<i>11</i>
<i>European Water Total Recordable Incidents by Time in Service (Chart 16).....</i>	<i>11</i>
<i>European Water Total Lost Time Incidents by Time of Day (Chart 17)</i>	<i>12</i>
<i>European Water Total Recordable Incidents by Time of Day (Chart 18).....</i>	<i>12</i>



2002 ASP Program European Water Totals

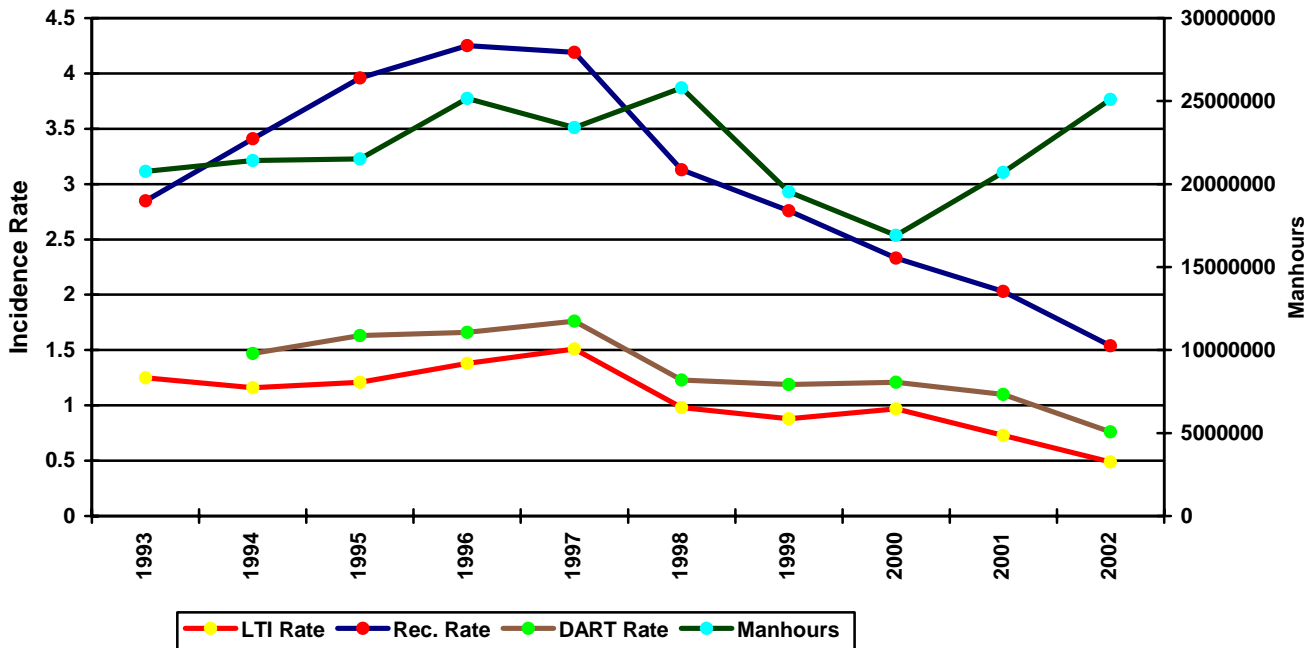
IADC 2002 European Water Totals (Table 1)

	<u>Total</u>
Total Manhours	25112371.00
Total Medical Treatment Incidents	97
Total Restricted Work Incidents	34
Total Lost Time Incidents	59
Total Fatalities	3
Total Recordables	193
MTO Incidence Rate	0.77
RWC Incidence Rate	0.27
LTI Incidence Rate	0.49
LTI Frequency Rate	2.47
DART Incidence Rate	0.76
DART Frequency Rate	3.82
Recordable Incidence Rate	1.54
Recordable Frequency Rate	7.69

Companies Reporting: Water - 15

Medical Treatment Incidence Rate = MTOs X 200,000
 Restricted Work Incidence Rate = RWCs X 200,000
 Lost Time Incidence Rate = LTIs X 200,000
 DART Incidence Rate = LTIs + RWC X 200,000
 Recordable Incidence Rate = RCRD X 200,000
 Lost Time Frequency Rate = LTIs X 1,000,000
 DART Frequency Rate = LTIs + RWC X 1,000,000
 Recordable Frequency Rate = RCRD X 1,000,000

European Water Total Incidence Rates vs Manhours (Figure 1)

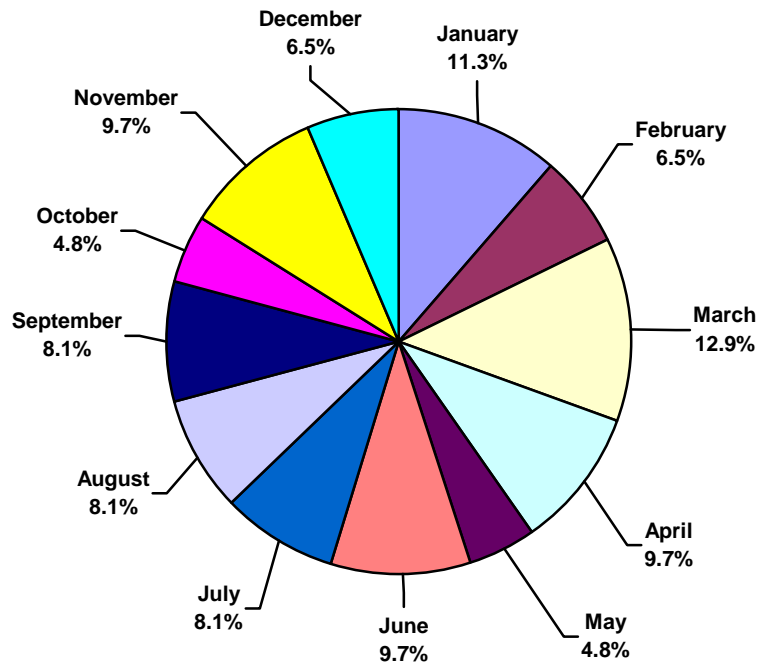




IADC 2002 European Water Charts

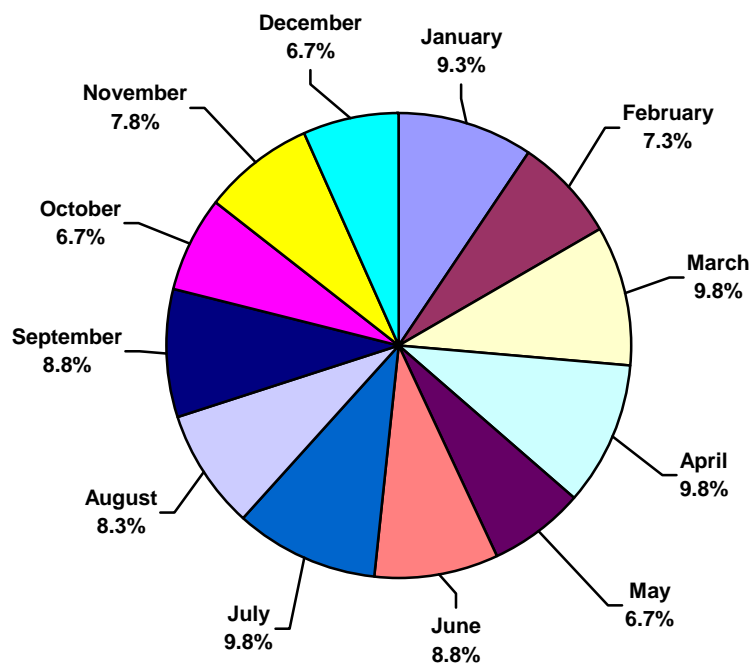
European Water Total Lost Time Incidents by Month (Chart 1)

Based on 59 Incidents



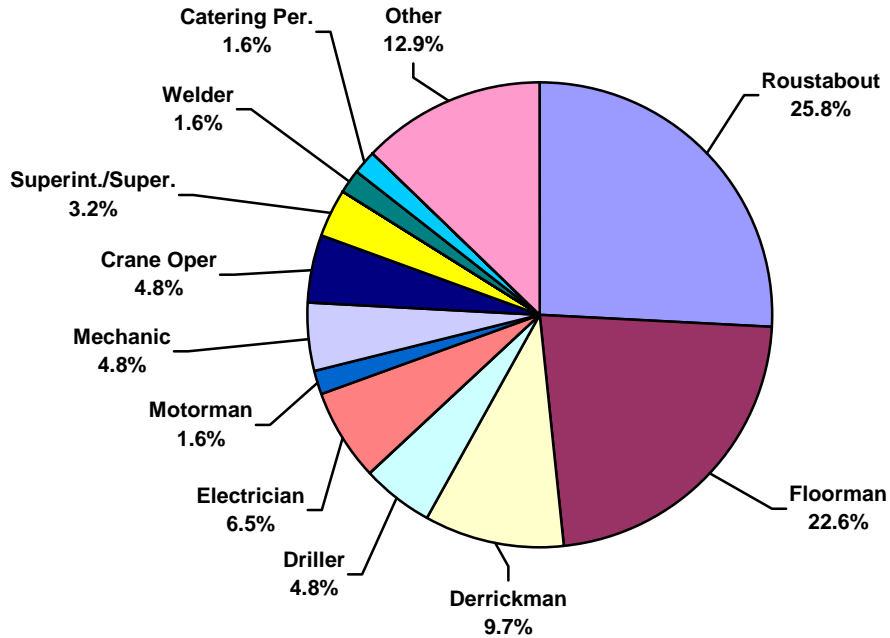
European Water Total Recordable Incidents by Month (Chart 2)

Based on 193 Incidents

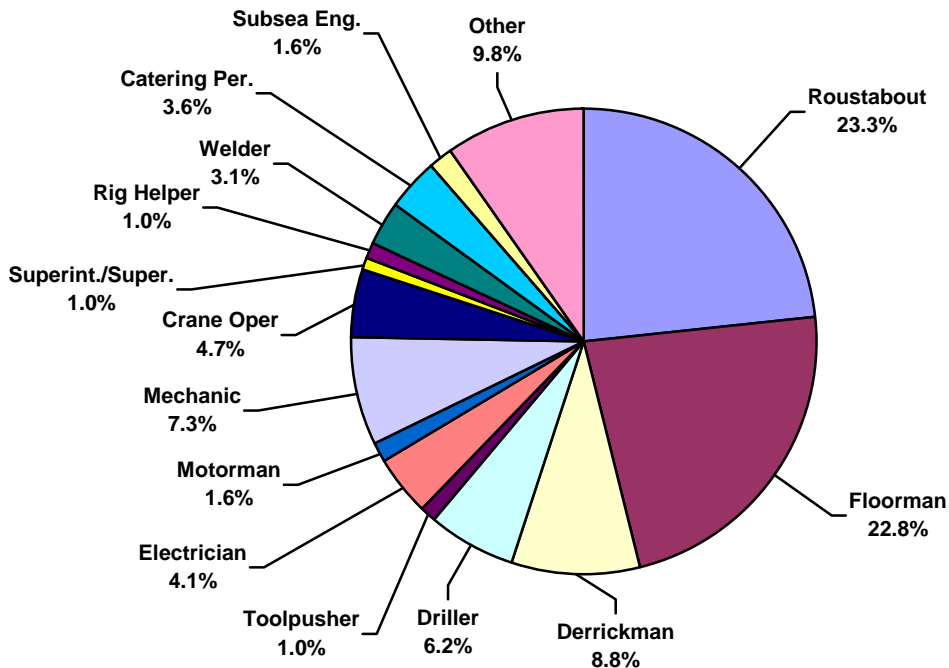




European Water Total Lost Time Incidents by Occupation (Chart 3)
Based on 59 Incidents

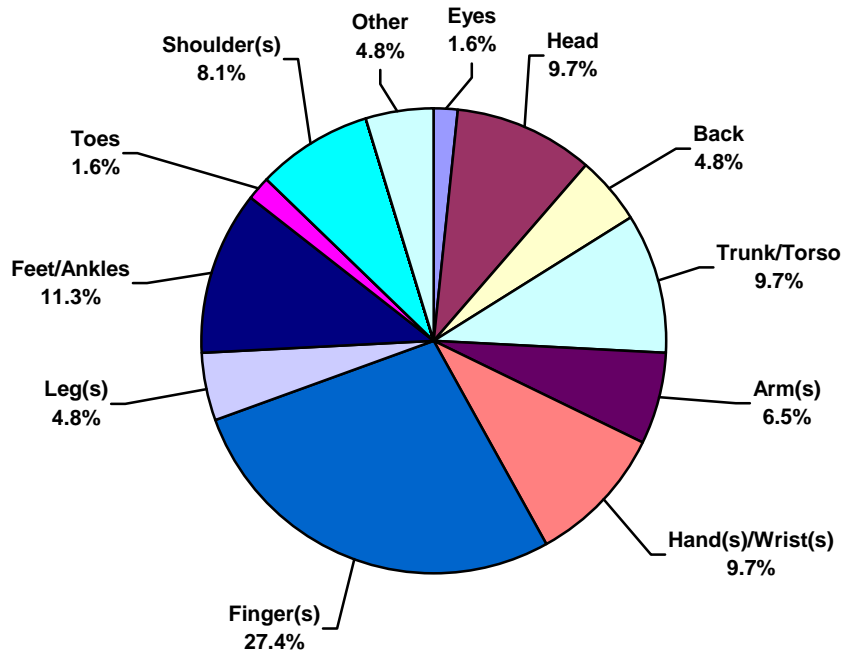


European Water Total Recordable Incidents by Occupation (Chart 4)
Based on 193 Incidents

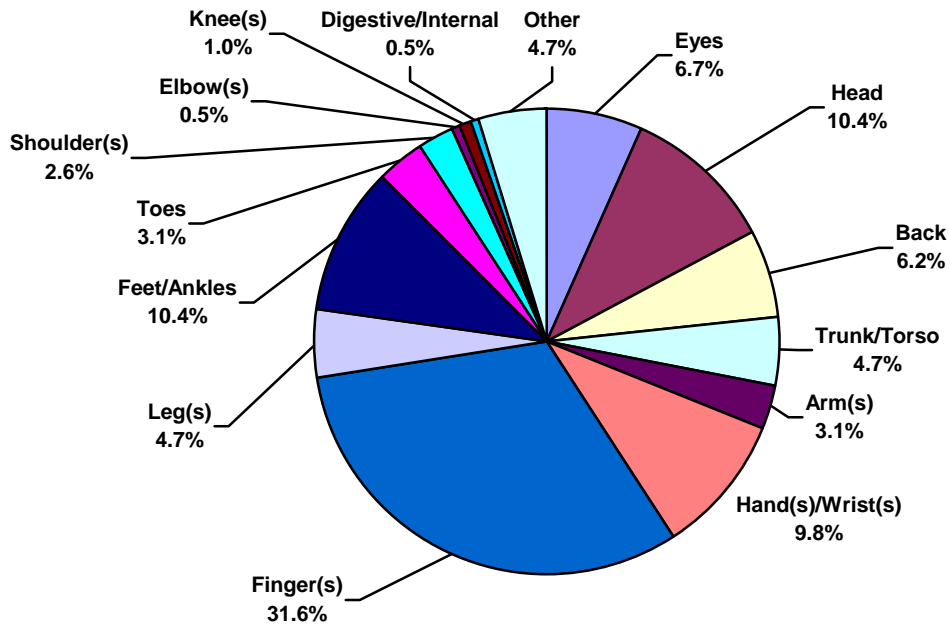




European Water Total Lost Time Incidents by Body Part (Chart 5)
Based on 59 Incidents

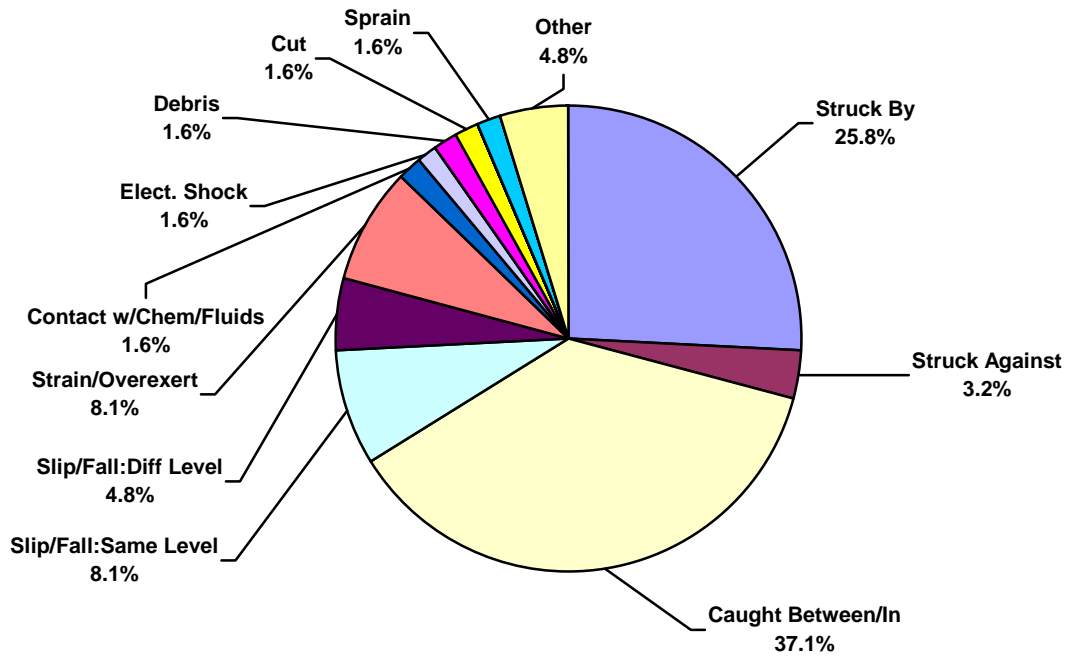


European Water Total Recordable Incidents by Body Part (Chart 6)
Based on 193 Incidents

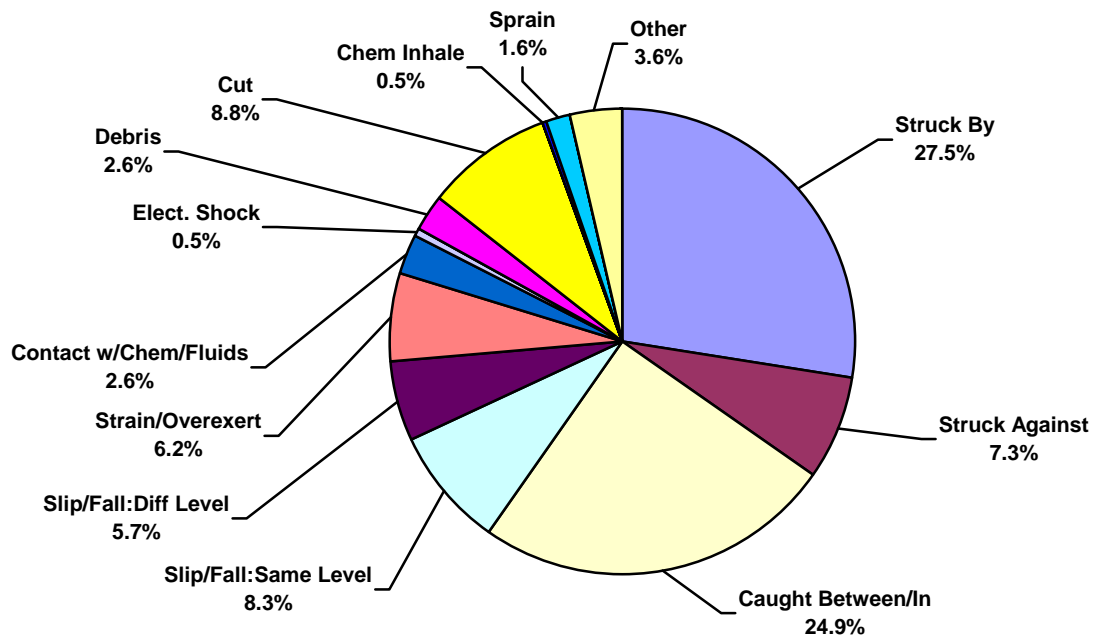




European Water Total Lost Time Incidents by Incident Type (Chart 7)
Based on 59 Incidents

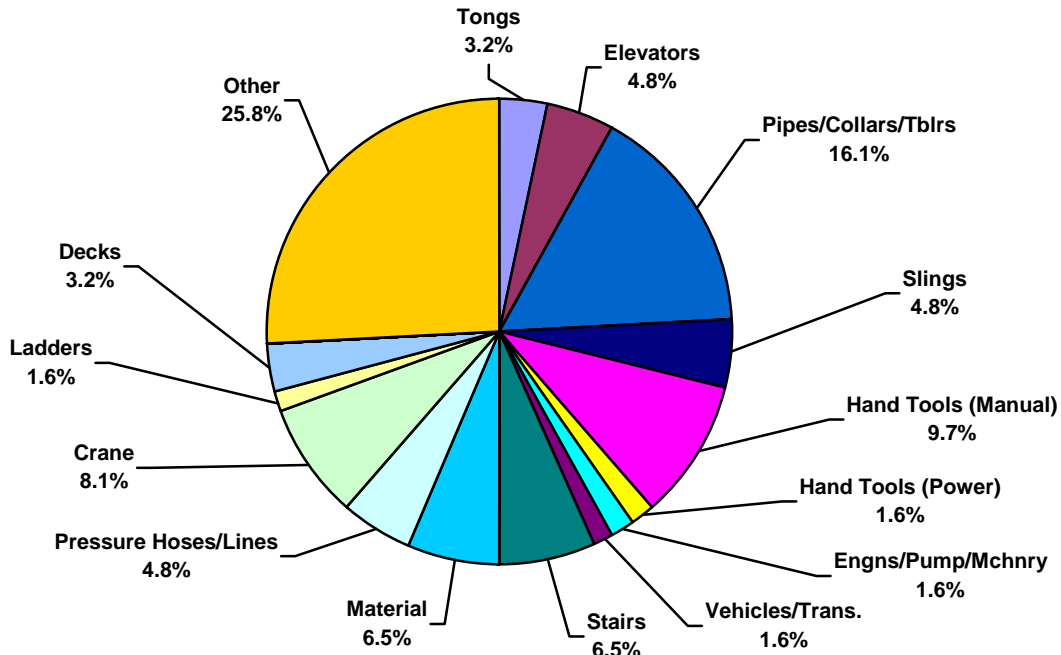


European Water Total Recordable Incidents by Incident Type (Chart 8)
Based on 193 Incidents

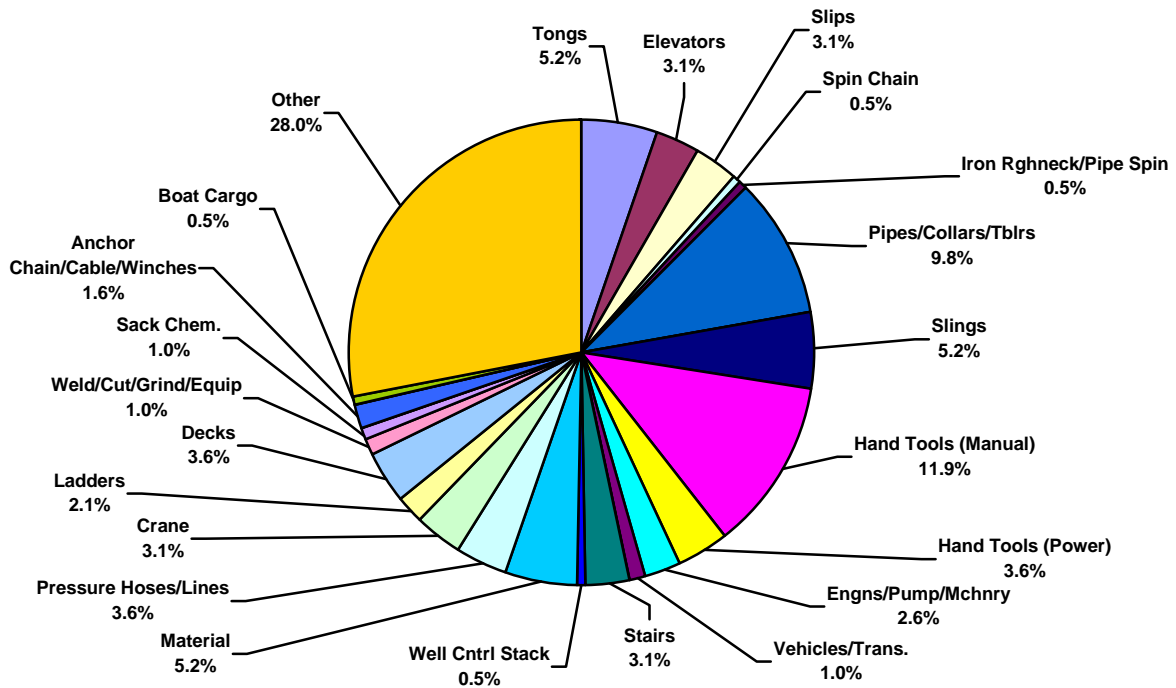




European Water Total Lost Time Incidents by Equipment (Chart 9)
Based on 59 Incidents

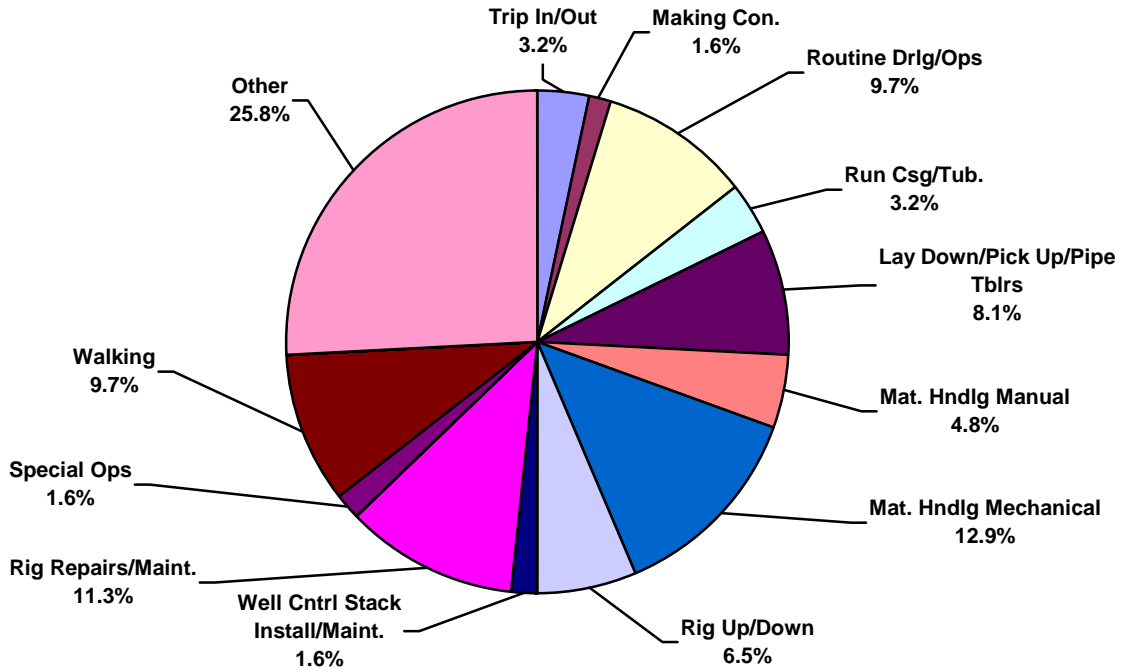


European Water Total Recordable Incidents by Equipment (Chart 10)
Based on 193 Incidents

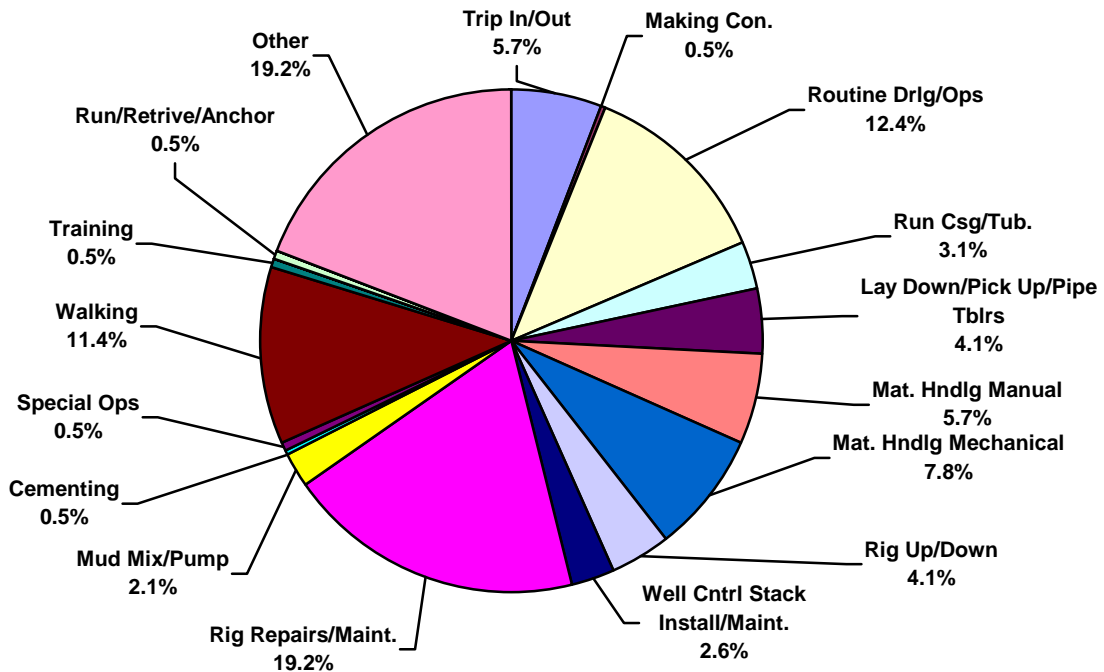




European Water Total Lost Time Incidents by Operation (Chart 11)
Based on 59 Incidents

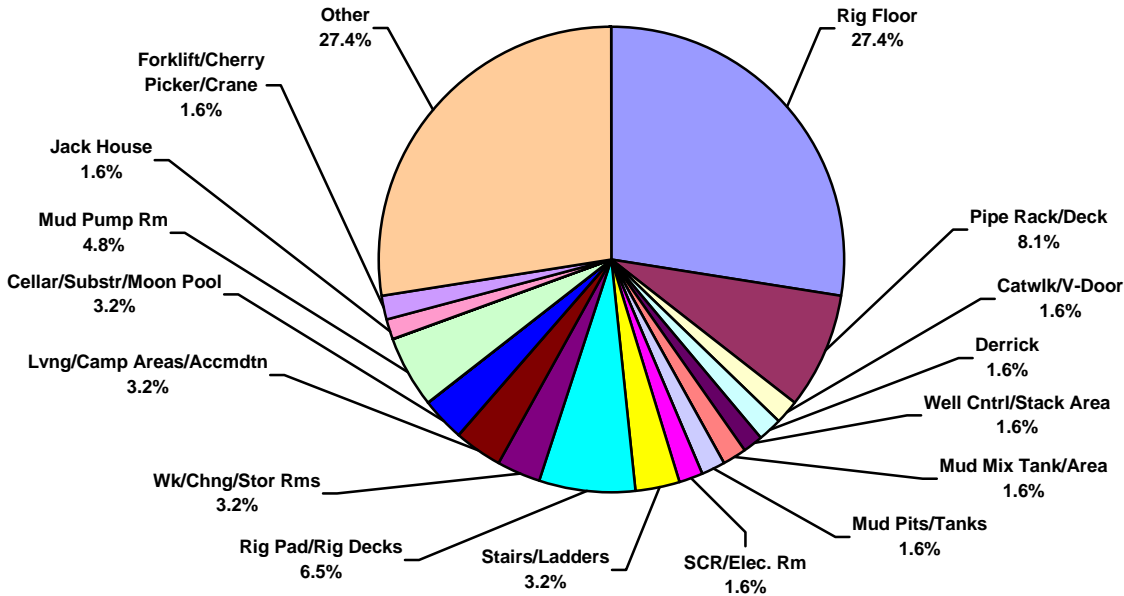


European Water Total Recordable Incidents by Operation (Chart 12)
Based on 193 Incidents

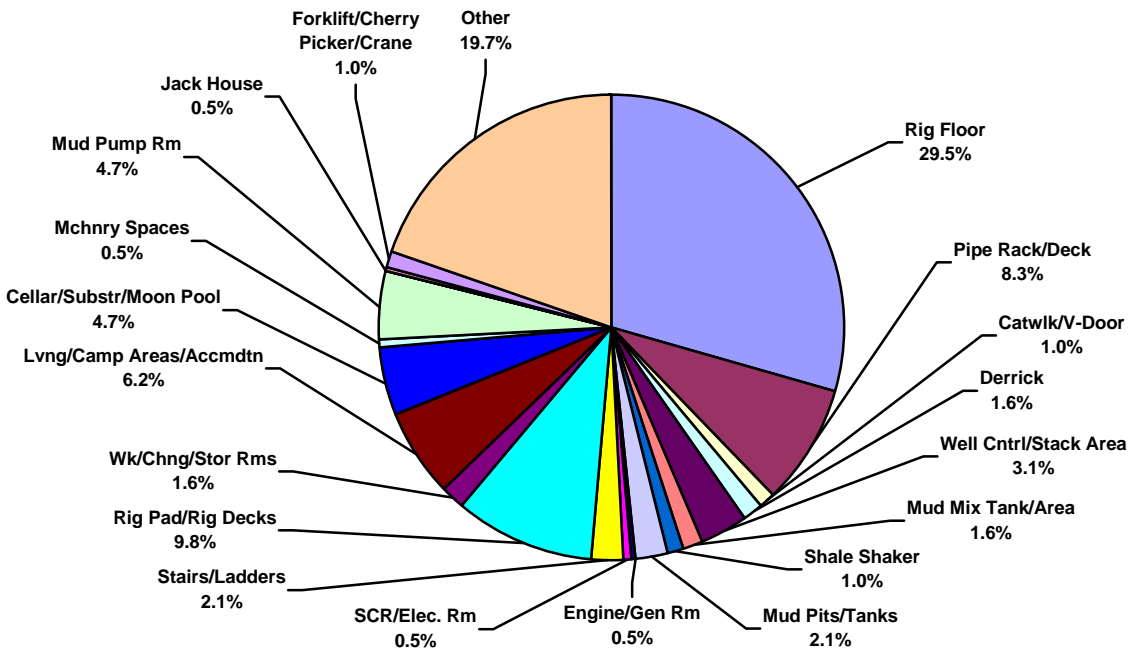




European Water Total Lost Time Incidents by Location (Chart 13)
Based on 59 Incidents

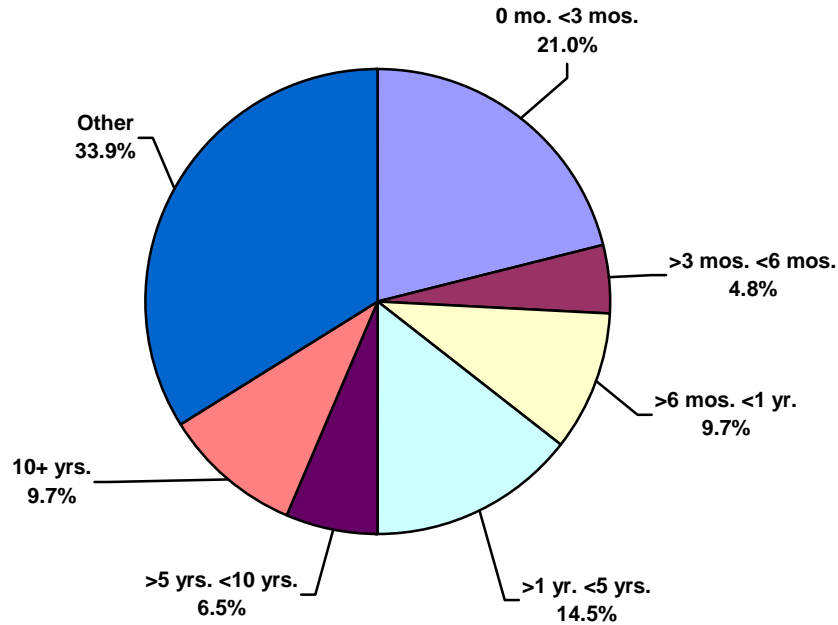


European Water Total Recordable Incidents by Location (Chart 14)
Based on 193 Incidents

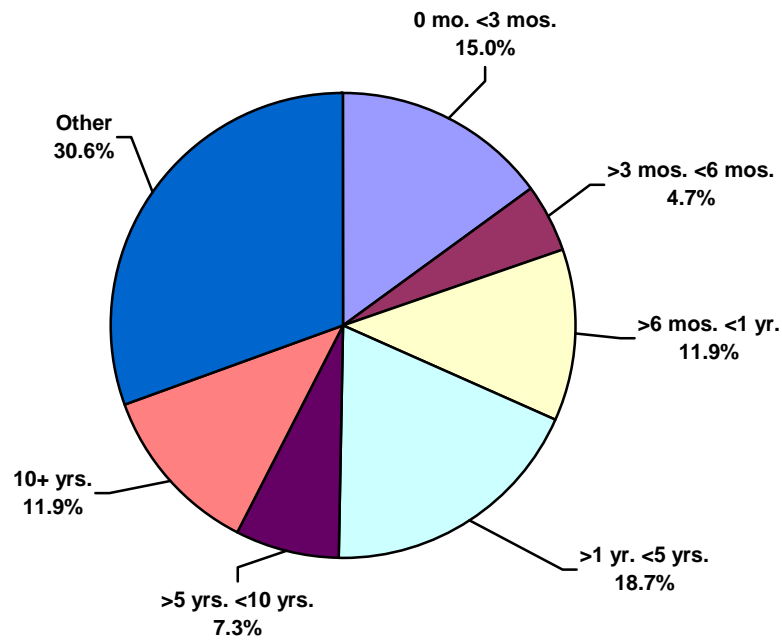




European Water Total Lost Time Incidents by Time in Service (Chart 15)
Based on 59 Incidents

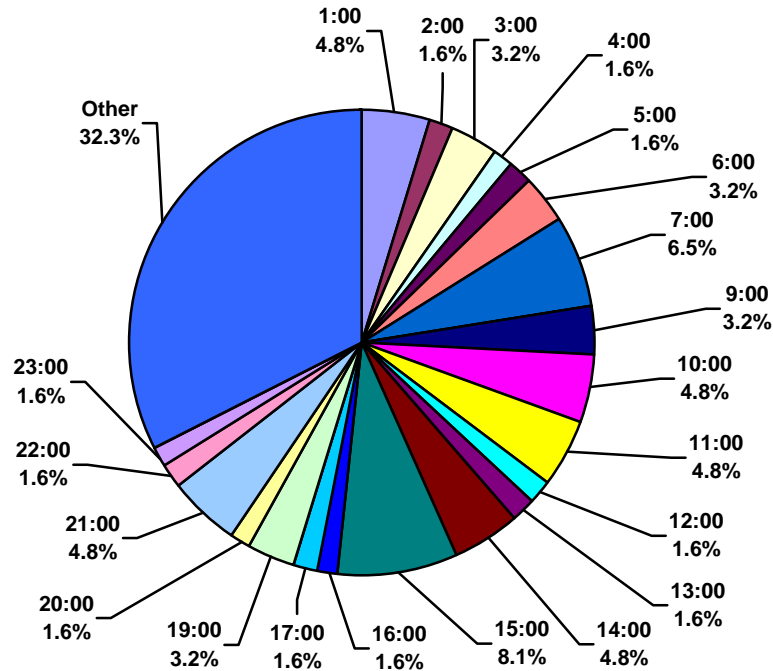


European Water Total Recordable Incidents by Time in Service (Chart 16)
Based on 193 Incidents





European Water Total Lost Time Incidents by Time of Day (Chart 17)
Based on 59 Incidents



European Water Total Recordable Incidents by Time of Day (Chart 18)
Based on 193 Incidents

