



IADC ASP PROGRAM

2002



Summary of Occupational Incidents (European Land Totals)

Issued 1 May 2003



Table of Contents

(Table of Contents is Hyperlinked, Just click on Topic & go)

2002 ASP PROGRAM EUROPEAN LAND TOTALS.....	3
IADC 2002 EUROPEAN LAND TOTALS (TABLE 1)	3
<i>European Land Total Incidence Rates vs Manhours (Figure 1)</i>	<i>3</i>
IADC 2002 EUROPEAN LAND CHART	4
<i>European Land Total Lost Time Incidents by Month (Chart 1).....</i>	<i>4</i>
<i>European Land Total Recordable Incidents by Month (Chart 2)</i>	<i>4</i>
<i>European Land Total Lost Time Incidents by Occupation (Chart 3)</i>	<i>5</i>
<i>European Land Total Recordable Incidents by Occupation (Chart 4).....</i>	<i>5</i>
<i>European Land Total Lost Time Incidents by Body Part (Chart 5).....</i>	<i>6</i>
<i>European Land Total Recordable Incidents by Body Part (Chart 6)</i>	<i>6</i>
<i>European Land Total Lost Time Incidents by Incident Type (Chart 7)</i>	<i>7</i>
<i>European Land Total Recordable Incidents by Incident Type (Chart 8).....</i>	<i>7</i>
<i>European Land Total Lost Time Incidents by Equipment (Chart 9).....</i>	<i>8</i>
<i>European Land Total Recordable Incidents by Equipment (Chart 10)</i>	<i>8</i>
<i>European Land Total Lost Time Incidents by Operation (Chart 11)</i>	<i>9</i>
<i>European Land Total Recordable Incidents by Operation (Chart 12).....</i>	<i>9</i>
<i>European Land Total Lost Time Incidents by Location (Chart 13)</i>	<i>10</i>
<i>European Land Total Recordable Incidents by Location (Chart 14).....</i>	<i>10</i>
<i>European Land Total Lost Time Incidents by Time in Service (Chart 15).....</i>	<i>11</i>
<i>European Land Total Recordable Incidents by Time in Service (Chart 16)</i>	<i>11</i>
<i>European Land Total Lost Time Incidents by Time of Day (Chart 17).....</i>	<i>12</i>
<i>European Land Total Recordable Incidents by Time of Day (Chart 18)</i>	<i>12</i>



2002 ASP Program European Land Totals

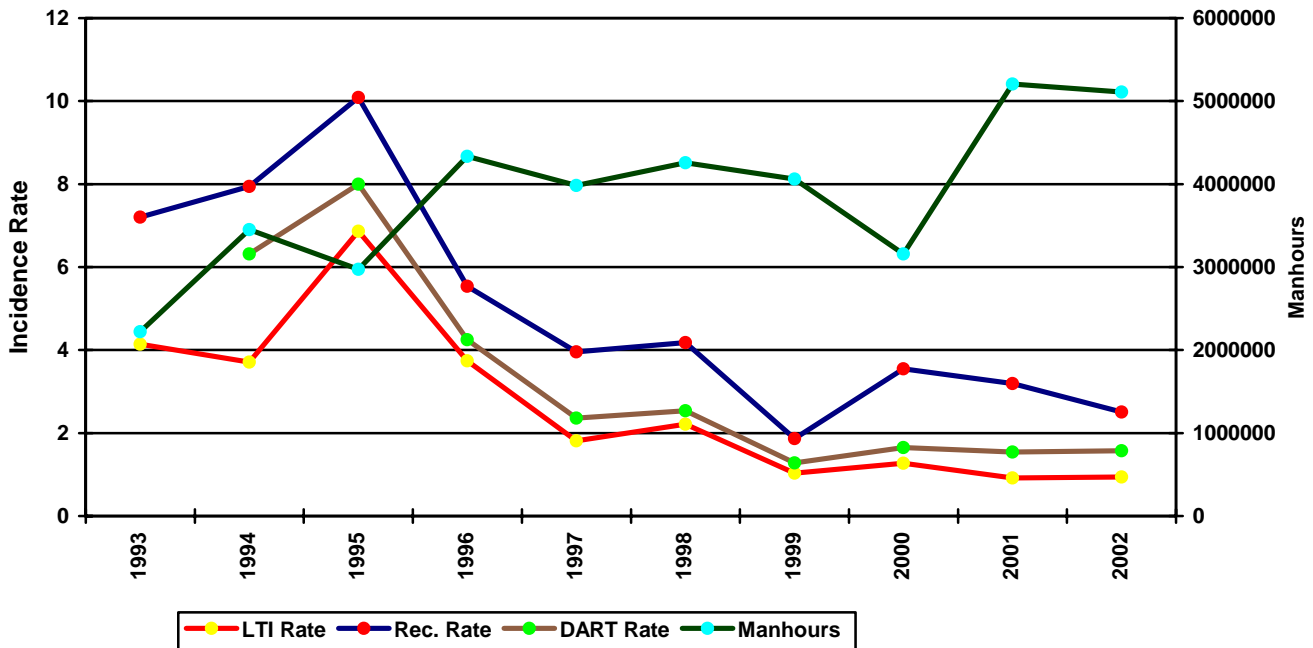
IADC 2002 European Land Totals (Table 1)

	<u>Total</u>
Total Manhours	5,108,958.00
Total Medical Treatment Incidents	24
Total Restricted Work Incidents	16
Total Lost Time Incidents	24
Total Fatalities	0
Total Recordables	64
MTO Incidence Rate	0.94
RWC Incidence Rate	0.63
LTI Incidence Rate	0.94
LTI Frequency Rate	4.70
DART Incidence Rate	1.57
DART Frequency Rate	7.83
Recordable Incidence Rate	2.51
Recordable Frequency Rate	12.53

Companies Reporting: Land – 6

Medical Treatment Incidence Rate = MTOs X 200,000
 Restricted Work Incidence Rate = RWCs X 200,000
 Lost Time Incidence Rate = LTIs X 200,000
 DART Incidence Rate = LTIs + RWC X 200,000
 Recordable Incidence Rate = RCRD X 200,000
 Lost Time Frequency Rate = LTIs X 1,000,000
 DART Frequency Rate = LTIs + RWC X 1,000,000
 Recordable Frequency Rate = RCRD X 1,000,000

European Land Total Incidence Rates vs Manhours (Figure 1)

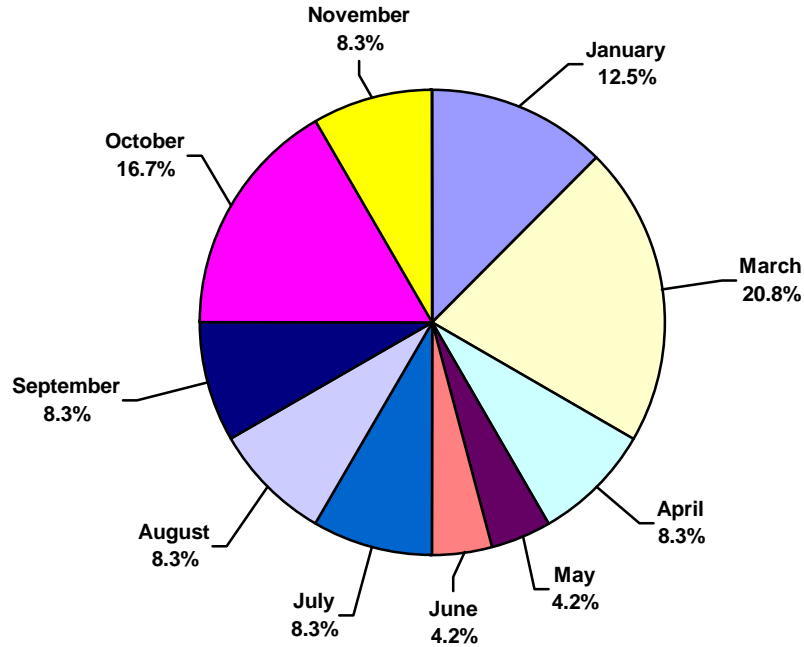




IADC 2002 European Land Chart

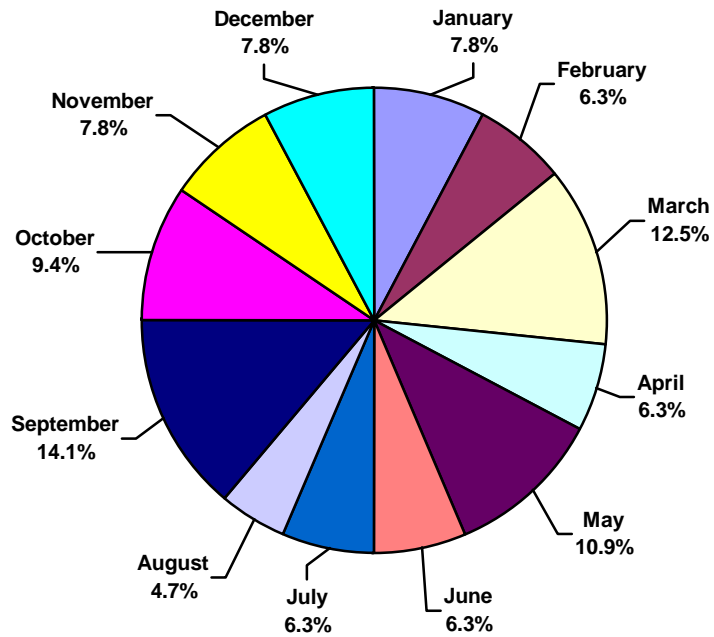
European Land Total Lost Time Incidents by Month (Chart 1)

Based on 24 Incidents



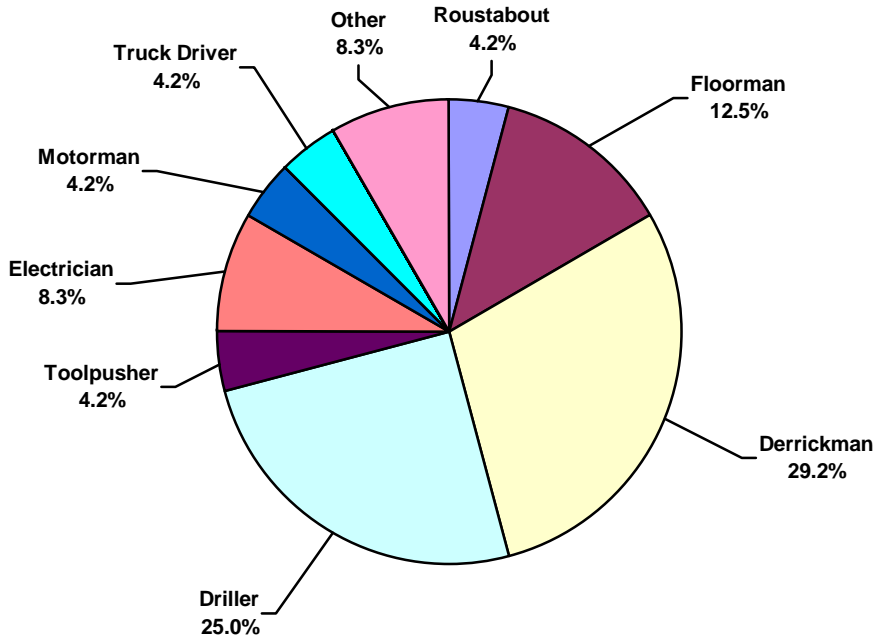
European Land Total Recordable Incidents by Month (Chart 2)

Based on 64 Incidents

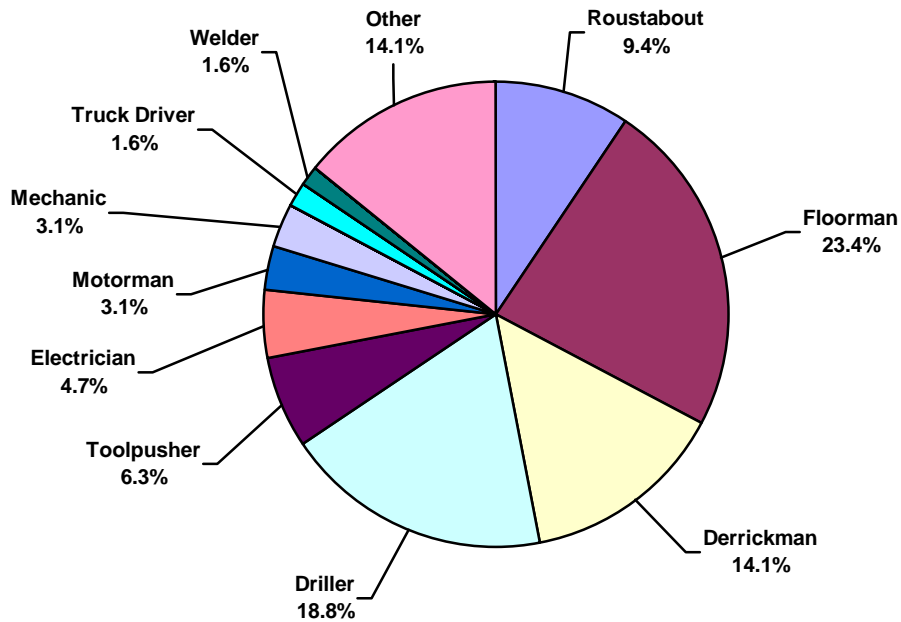




European Land Total Lost Time Incidents by Occupation (Chart 3)
Based on 24 Incidents

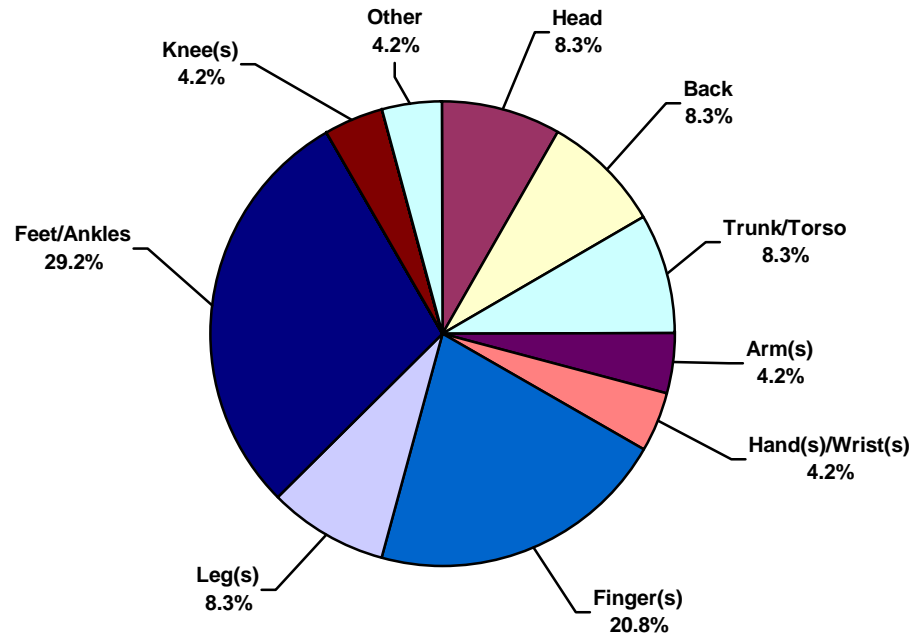


European Land Total Recordable Incidents by Occupation (Chart 4)
Based on 64 Incidents

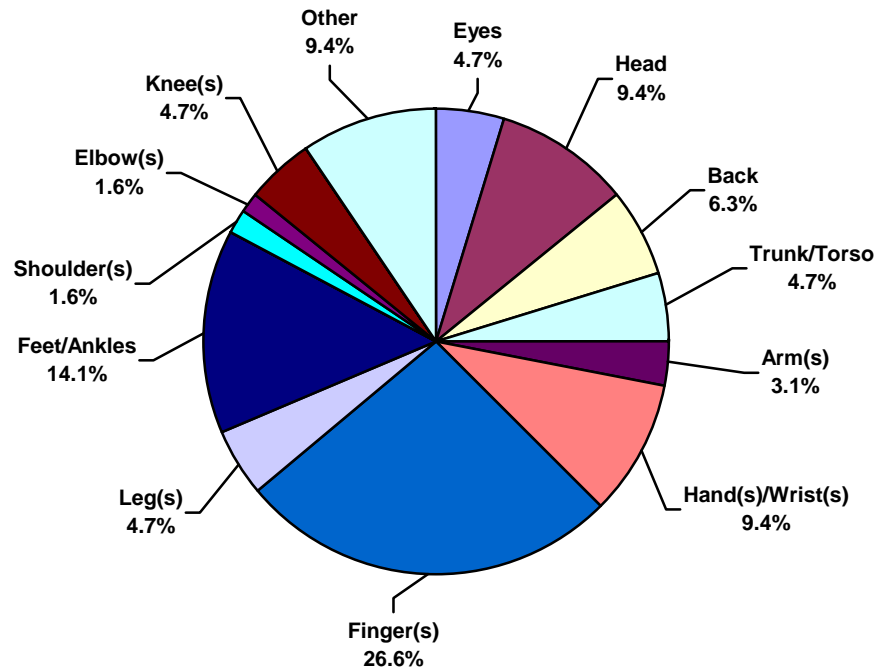




European Land Total Lost Time Incidents by Body Part (Chart 5)
Based on 24 Incidents

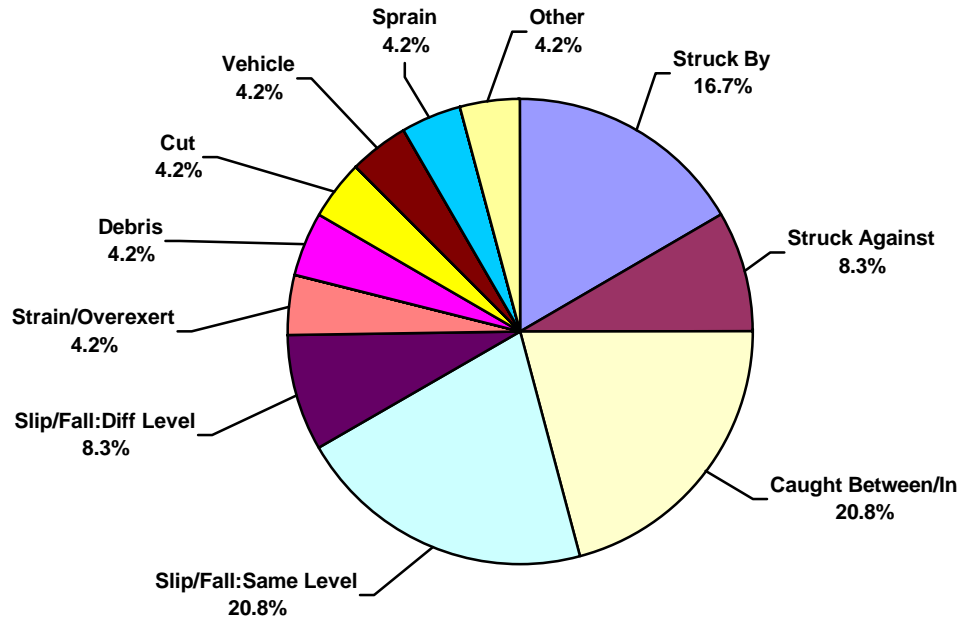


European Land Total Recordable Incidents by Body Part (Chart 6)
Based on 64 Incidents

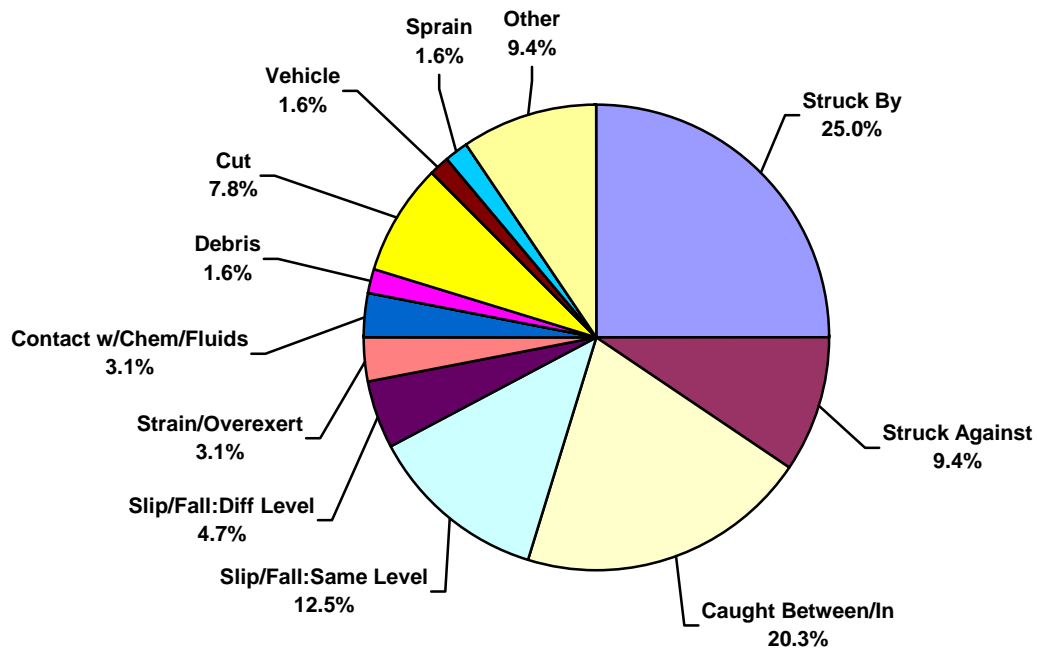




European Land Total Lost Time Incidents by Incident Type (Chart 7)
Based on 24 Incidents

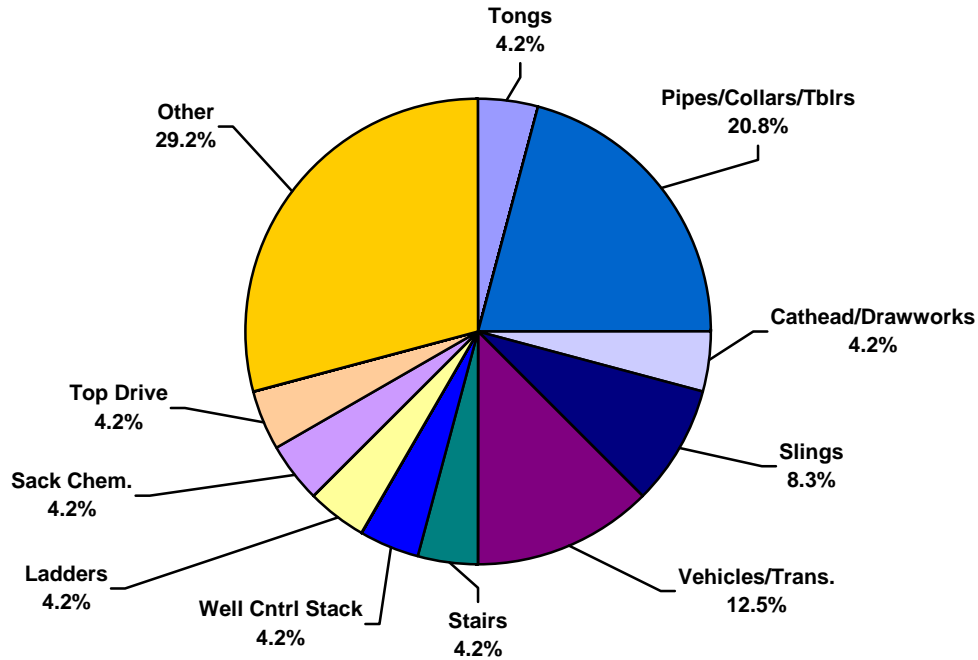


European Land Total Recordable Incidents by Incident Type (Chart 8)
Based on 64 Incidents

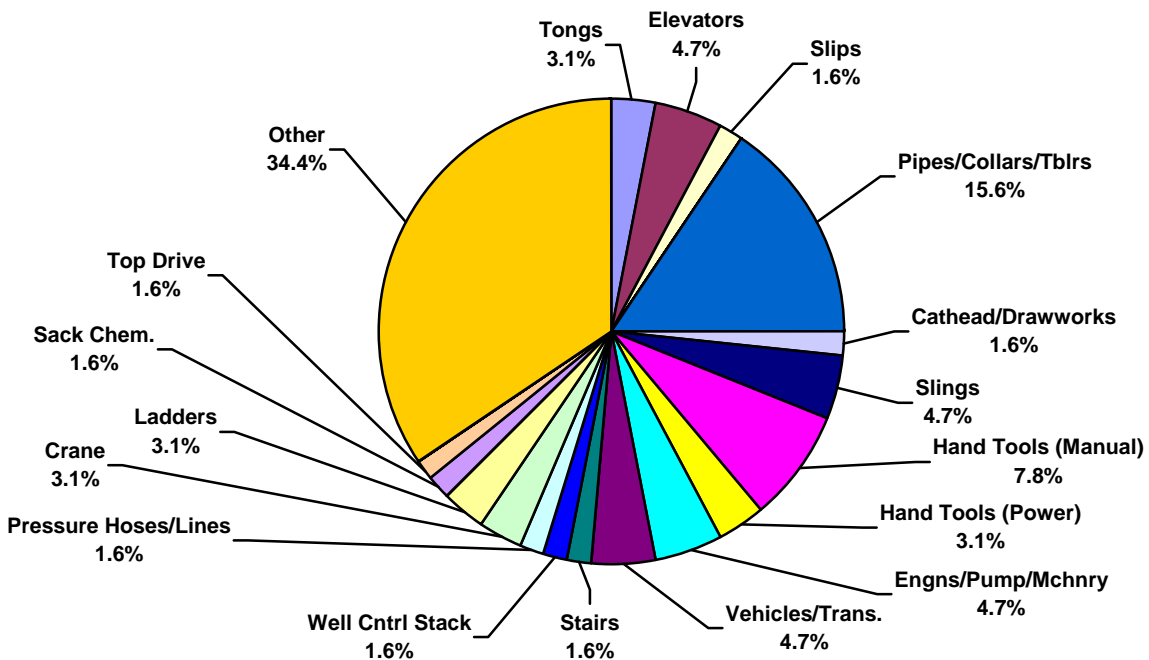




European Land Total Lost Time Incidents by Equipment (Chart 9)
Based on 24 Incidents

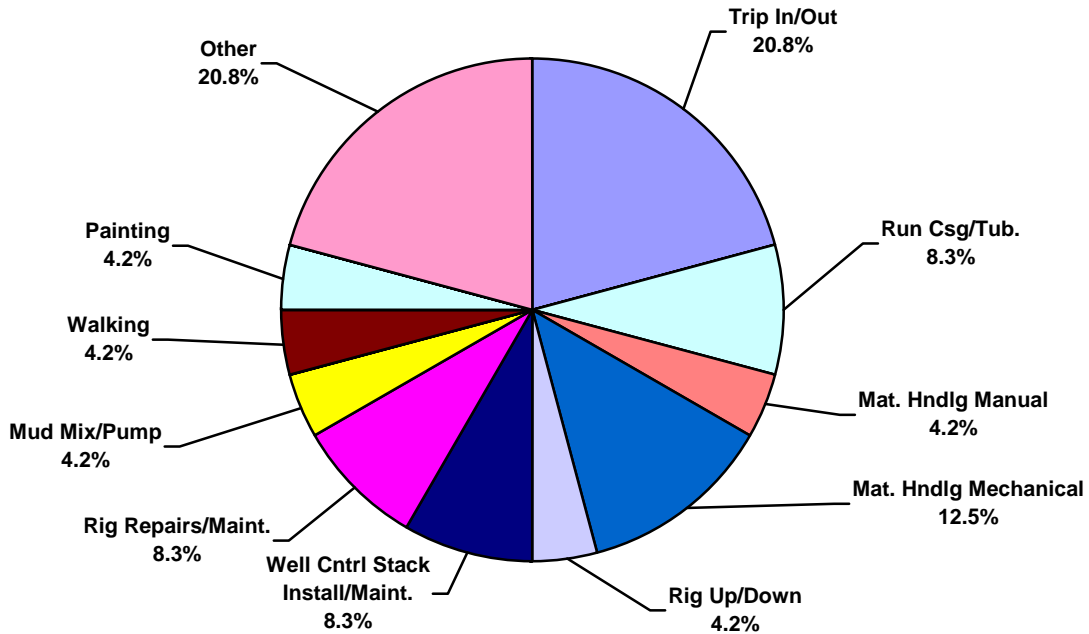


European Land Total Recordable Incidents by Equipment (Chart 10)
Based on 64 Incidents

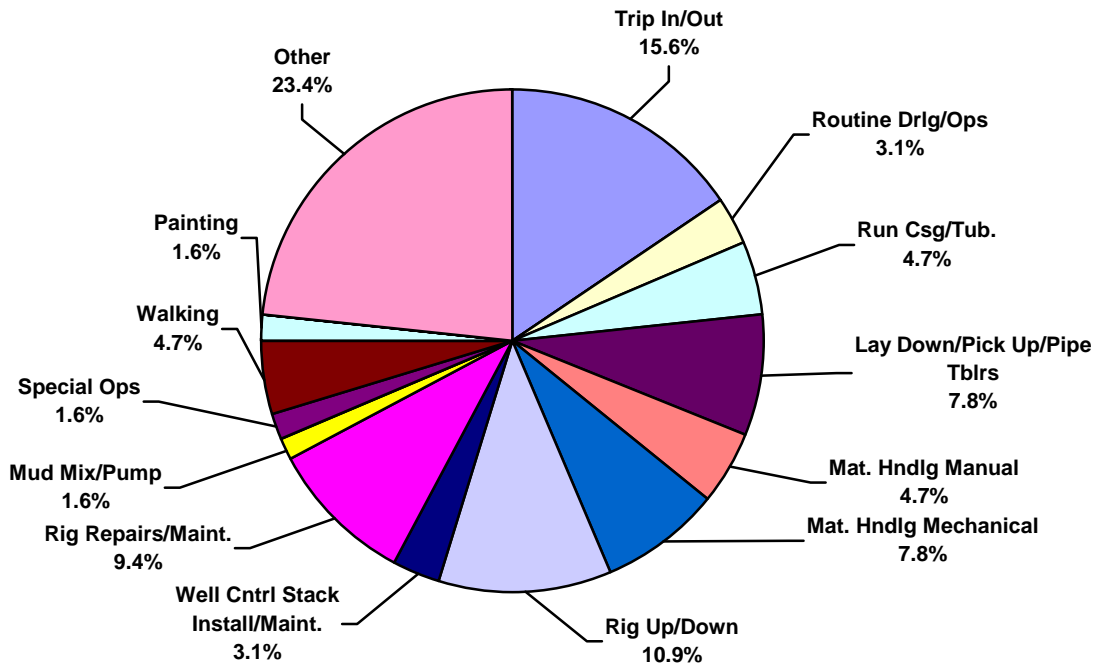




European Land Total Lost Time Incidents by Operation (Chart 11)
Based on 24 Incidents

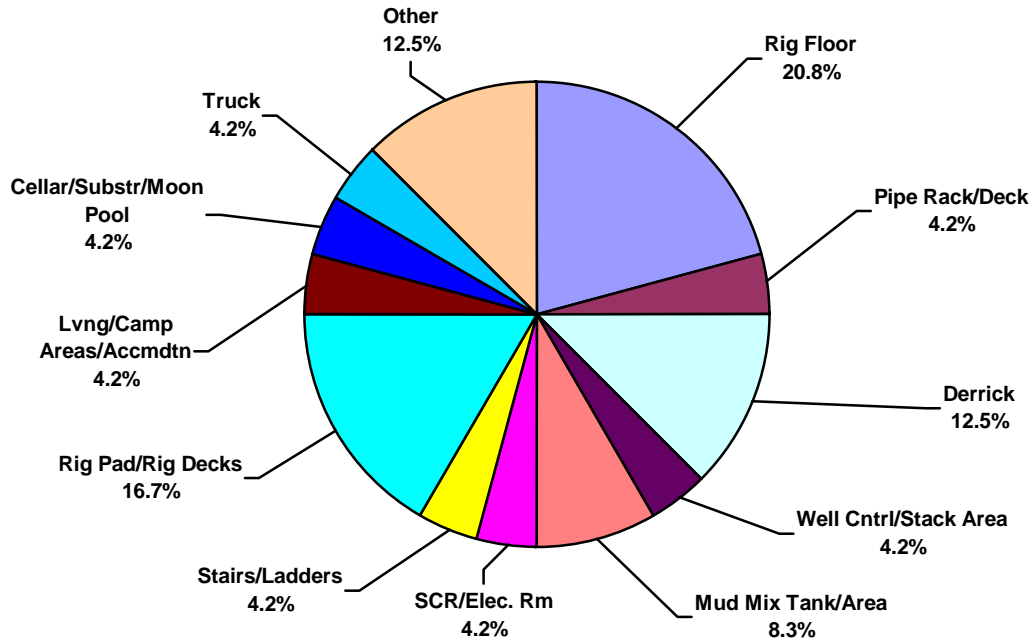


European Land Total Recordable Incidents by Operation (Chart 12)
Based on 64 Incidents

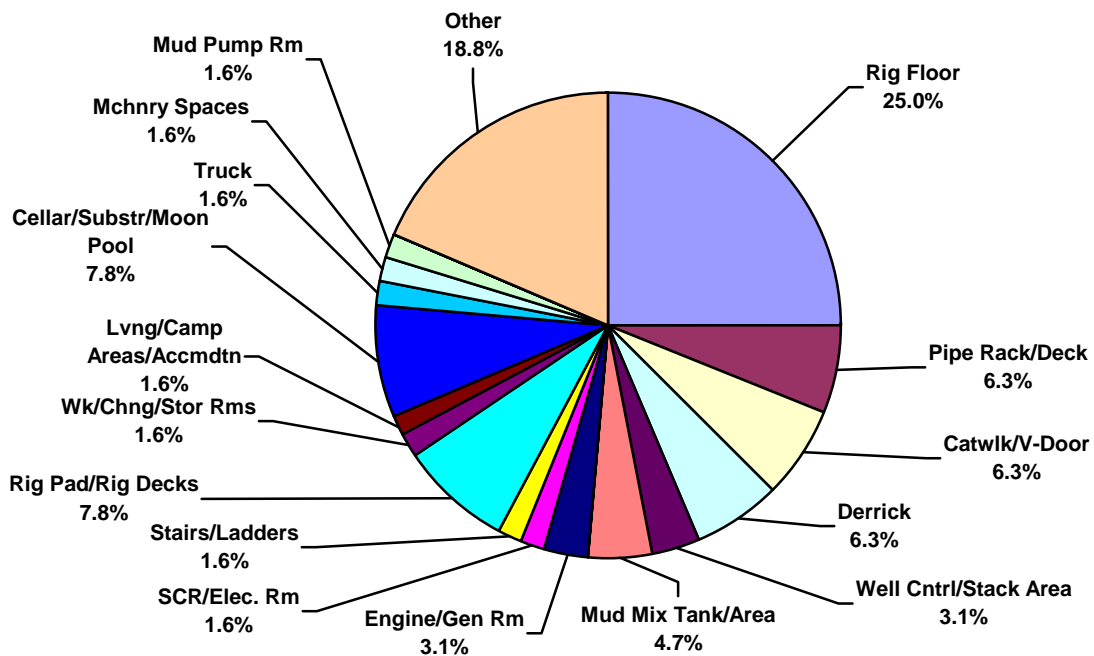




European Land Total Lost Time Incidents by Location (Chart 13)
Based on 24 Incidents

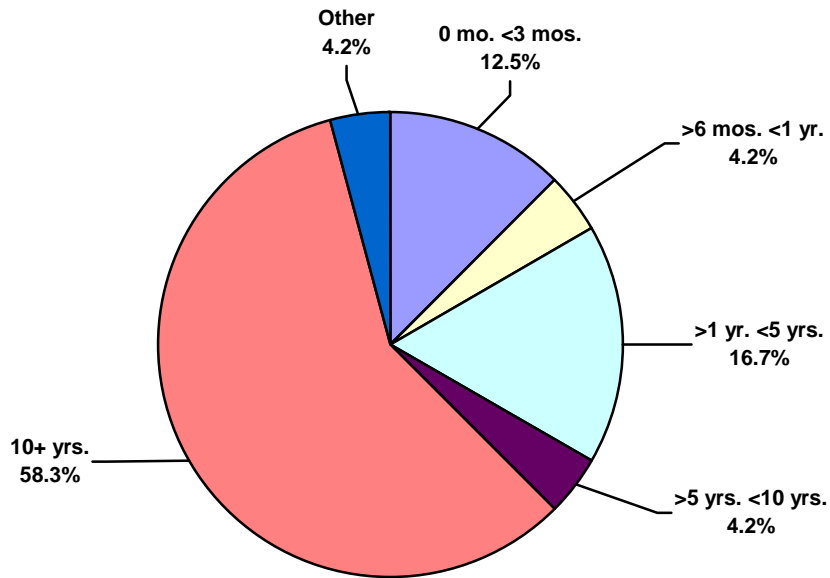


European Land Total Recordable Incidents by Location (Chart 14)
Based on 64 Incidents

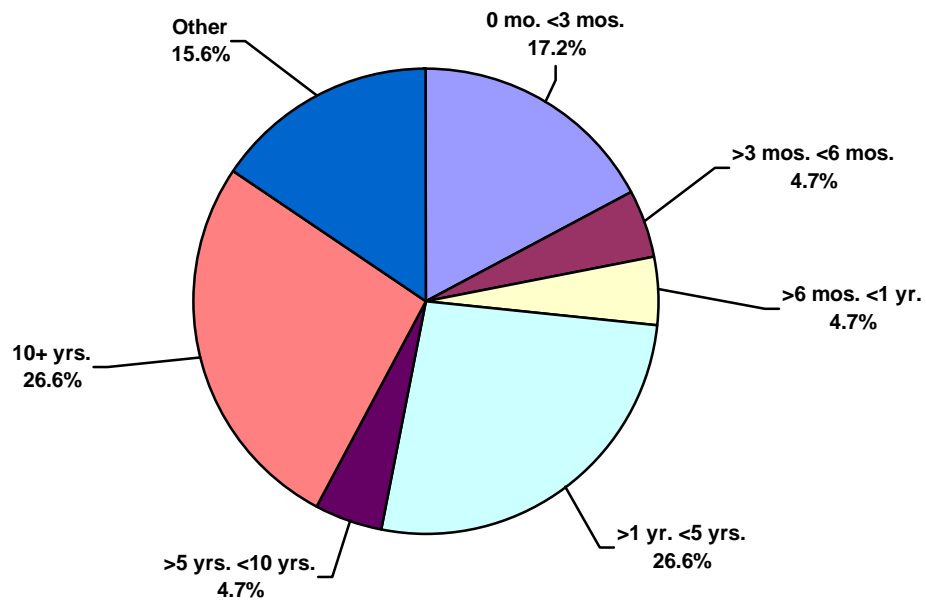




European Land Total Lost Time Incidents by Time in Service (Chart 15)
Based on 24 Incidents

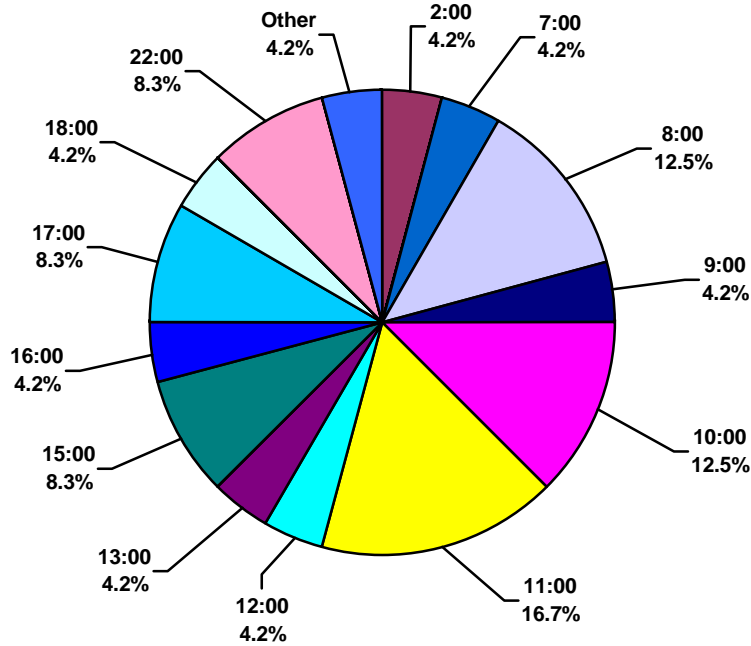


European Land Total Recordable Incidents by Time in Service (Chart 16)
Based on 64 Incidents





European Land Total Lost Time Incidents by Time of Day (Chart 17)
Based on 24 Incidents



European Land Total Recordable Incidents by Time of Day (Chart 18)
Based on 64 Incidents

