



# IADC ASP PROGRAM

## 2002



# Summary of Occupational Incidents (Central/South America Water Totals)

*Issued 1 May 2003*



# Table of Contents

(Table of Contents is Hyperlinked, Just click on Topic & go)

<b>2002 ASP PROGRAM CENTRAL/SOUTH AMERICA WATER TOTALS .....</b>	<b>3</b>
IADC 2002 CENTRAL/SOUTH AMERICA WATER TOTALS (TABLE 1) .....	3
<i>Central/South America Water Total Incidence Rates vs Manhours (Figure 1) .....</i>	<i>3</i>
IADC 2002 CENTRAL/SOUTH AMERICA WATER CHARTS .....	4
<i>Central/South America Water Total Lost Time Incidents by Month (Chart 1).....</i>	<i>4</i>
<i>Central/South America Water Total Recordable Incidents by Month (Chart 2) .....</i>	<i>4</i>
<i>Central/South America Water Total Lost Time Incidents by Occupation (Chart 3).....</i>	<i>5</i>
<i>Central/South America Water Total Recordable Incidents by Occupation (Chart 4).....</i>	<i>5</i>
<i>Central/South America Water Total Lost Time Incidents by Body Part (Chart 5).....</i>	<i>6</i>
<i>Central/South America Water Total Recordable Incidents by Body Part (Chart 6) .....</i>	<i>6</i>
<i>Central/South America Water Total Lost Time Incidents by Incident Type (Chart 7) .....</i>	<i>7</i>
<i>Central/South America Water Total Recordable Incidents by Incident Type (Chart 8).....</i>	<i>7</i>
<i>Central/South America Water Total Lost Time Incidents by Equipment (Chart 9).....</i>	<i>8</i>
<i>Central/South America Water Total Recordable Incidents by Equipment (Chart 10).....</i>	<i>8</i>
<i>Central/South America Water Total Lost Time Incidents by Operation (Chart 11) .....</i>	<i>9</i>
<i>Central/South America Water Total Recordable Incidents by Operation (Chart 12).....</i>	<i>9</i>
<i>Central/South America Water Total Lost Time Incidents by Location (Chart 13).....</i>	<i>10</i>
<i>Central/South America Water Total Recordable Incidents by Location (Chart 14) .....</i>	<i>10</i>
<i>Central/South America Water Total Lost Time Incidents by Time in Service (Chart 15).....</i>	<i>11</i>
<i>Central/South America Water Total Recordable Incidents by Time in Service (Chart 16) .....</i>	<i>11</i>
<i>Central/South America Water Total Lost Time Incidents by Time of Day (Chart 17) .....</i>	<i>12</i>
<i>Central/South America Water Total Recordable Incidents by Time of Day (Chart 18).....</i>	<i>12</i>



# 2002 ASP Program Central/South America Water Totals

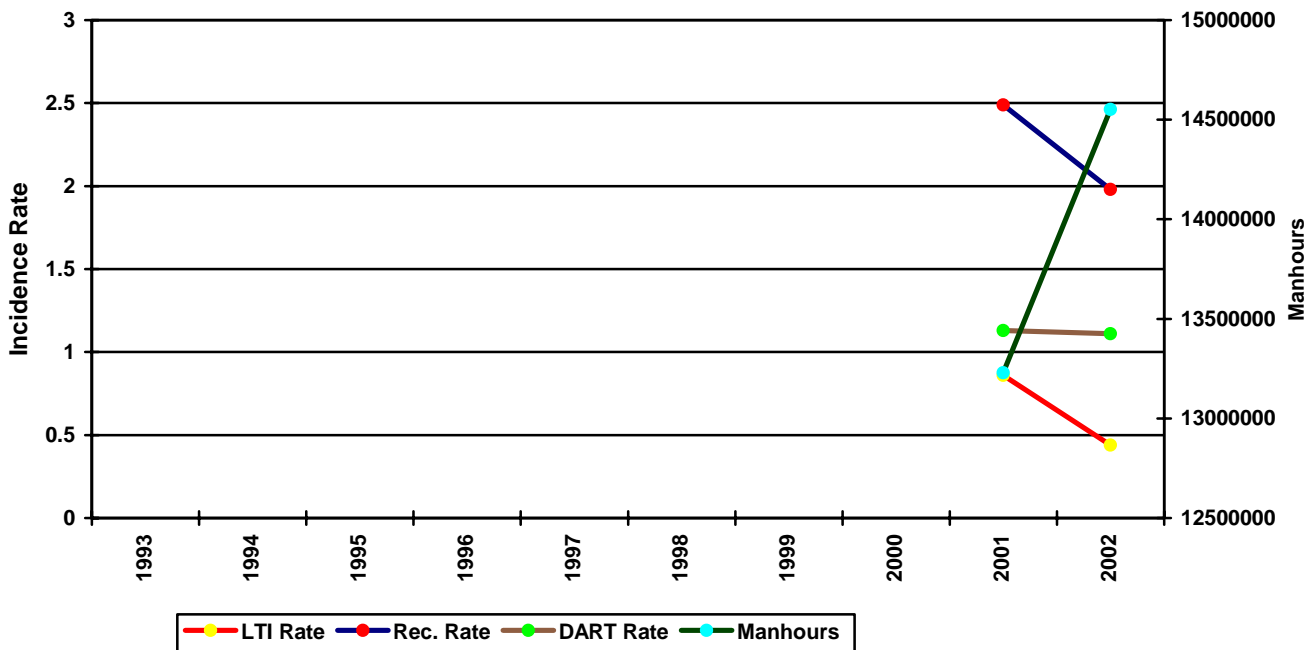
## IADC 2002 Central/South America Water Totals (Table 1)

	<u>Total</u>
Total Manhours	14,552,495.00
Total Medical Treatment Incidents	63
Total Restricted Work Incidents	49
Total Lost Time Incidents	31
Total Fatalities	1
Total Recordables	144
MTO Incidence Rate	0.87
RWC Incidence Rate	0.67
LTI Incidence Rate	0.44
LTI Frequency Rate	2.20
DART Incidence Rate	1.11
DART Frequency Rate	5.57
Recordable Incidence Rate	1.98
Recordable Frequency Rate	9.90

Companies Reporting: Water - 10

Medical Treatment Incidence Rate = MTOs X 200,000  
 Restricted Work Incidence Rate = RWCs X 200,000  
 Lost Time Incidence Rate = LTIs X 200,000  
 DART Incidence Rate = LTIs + RWC X 200,000  
 Recordable Incidence Rate = RCRD X 200,000  
 Lost Time Frequency Rate = LTIs X 1,000,000  
 DART Frequency Rate = LTIs + RWC X 1,000,000  
 Recordable Frequency Rate = RCRD X 1,000,000

Central/South America Water Total Incidence Rates vs Manhours (Figure 1)

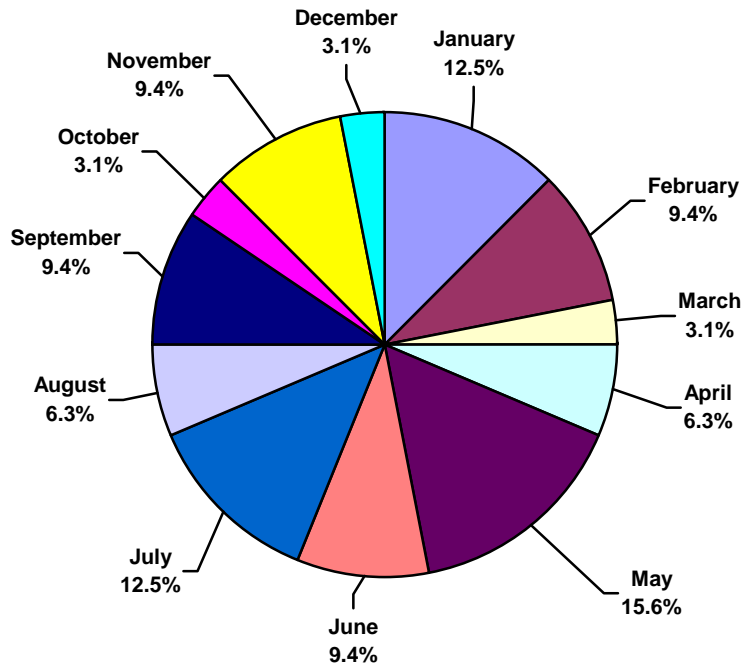




## IADC 2002 Central/South America Water Charts

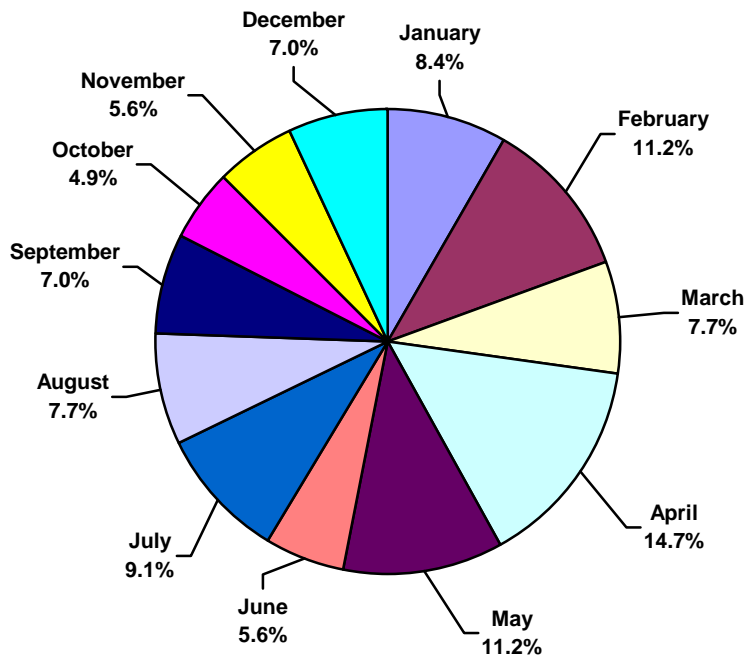
### Central/South America Water Total Lost Time Incidents by Month (Chart 1)

Based on 31 Incidents



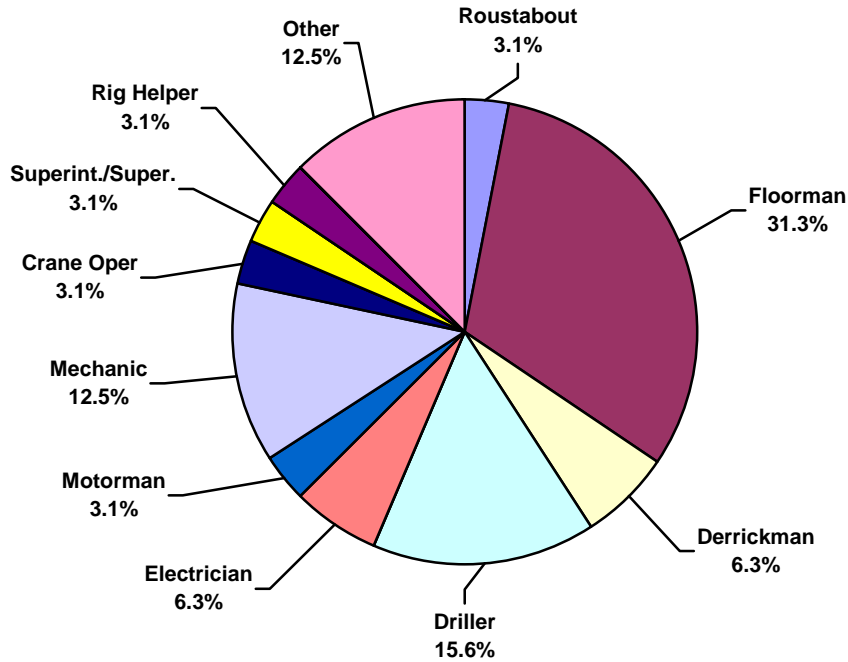
### Central/South America Water Total Recordable Incidents by Month (Chart 2)

Based on 144 Incidents

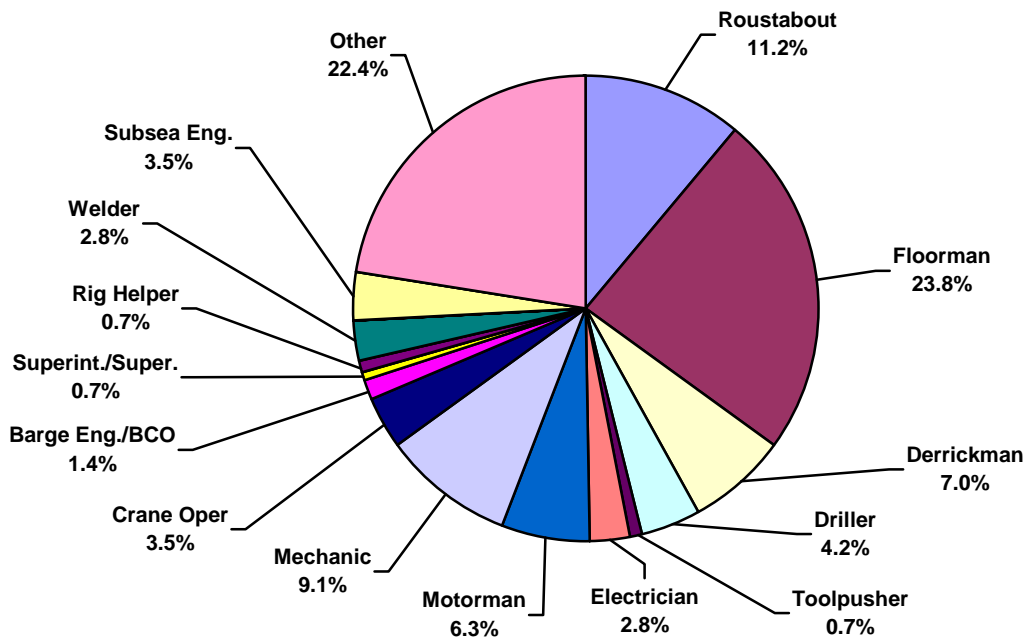




**Central/South America Water Total Lost Time Incidents by Occupation (Chart 3)**  
Based on 31 Incidents

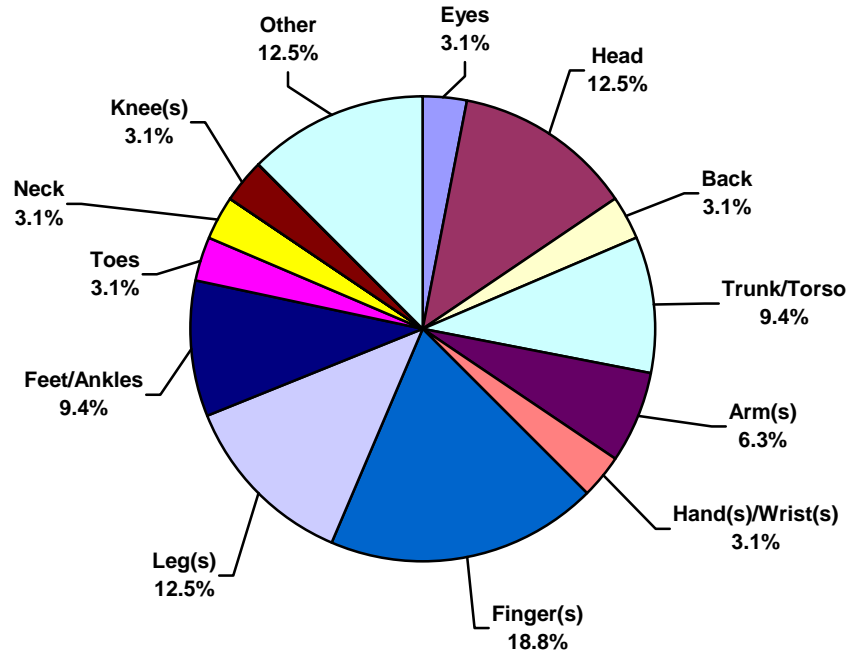


**Central/South America Water Total Recordable Incidents by Occupation (Chart 4)**  
Based on 144 Incidents

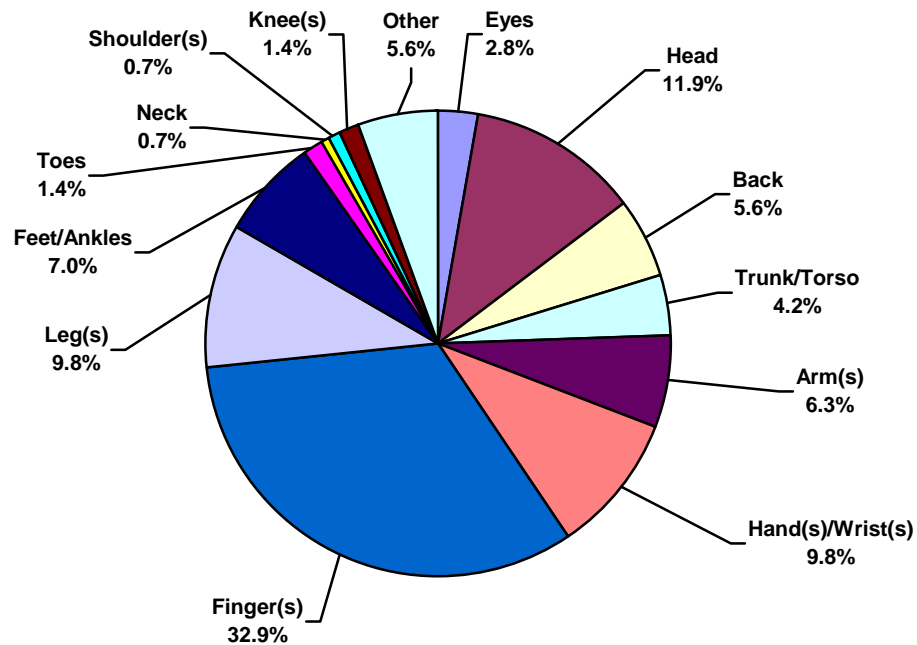




**Central/South America Water Total Lost Time Incidents by Body Part (Chart 5)**  
Based on 31 Incidents

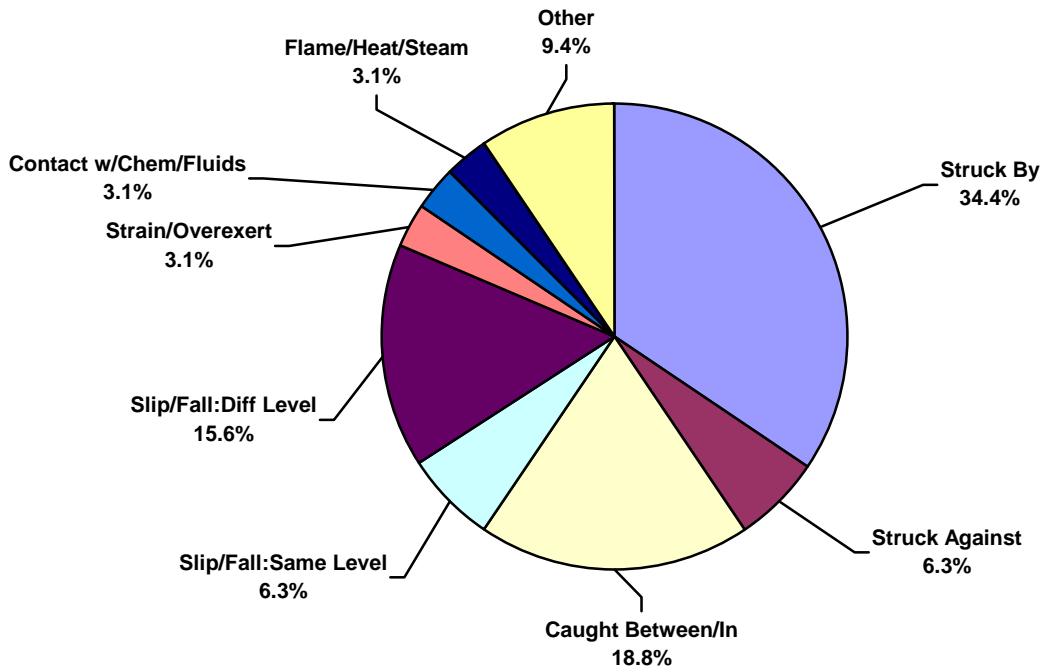


**Central/South America Water Total Recordable Incidents by Body Part (Chart 6)**  
Based on 144 Incidents

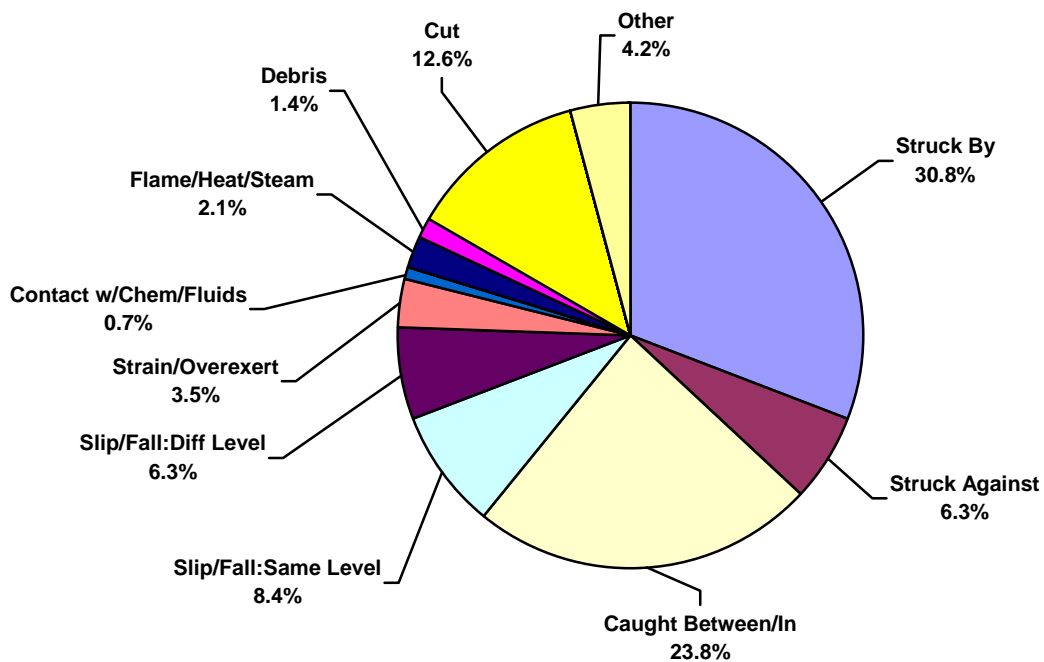




**Central/South America Water Total Lost Time Incidents by Incident Type (Chart 7)**  
Based on 31 Incidents

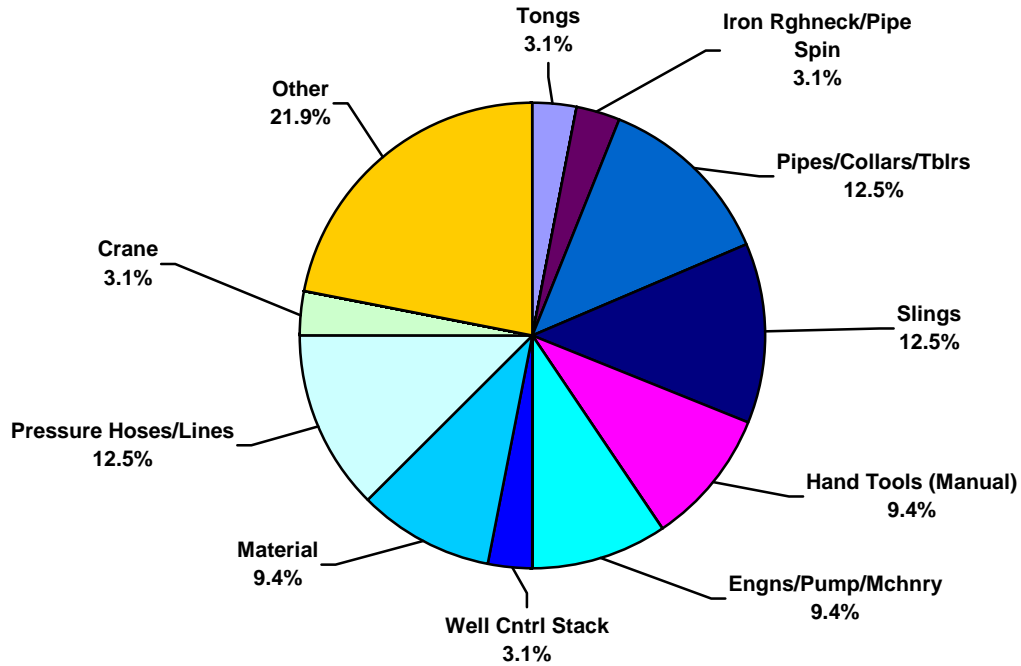


**Central/South America Water Total Recordable Incidents by Incident Type (Chart 8)**  
Based on 144 Incidents

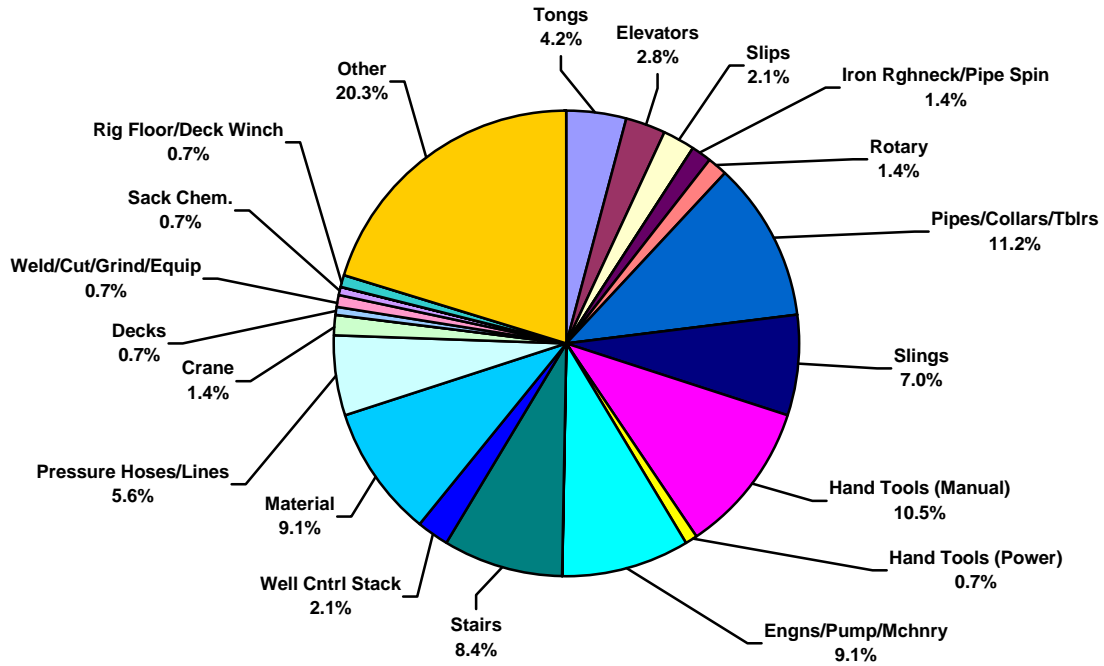




**Central/South America Water Total Lost Time Incidents by Equipment (Chart 9)**  
Based on 31 Incidents

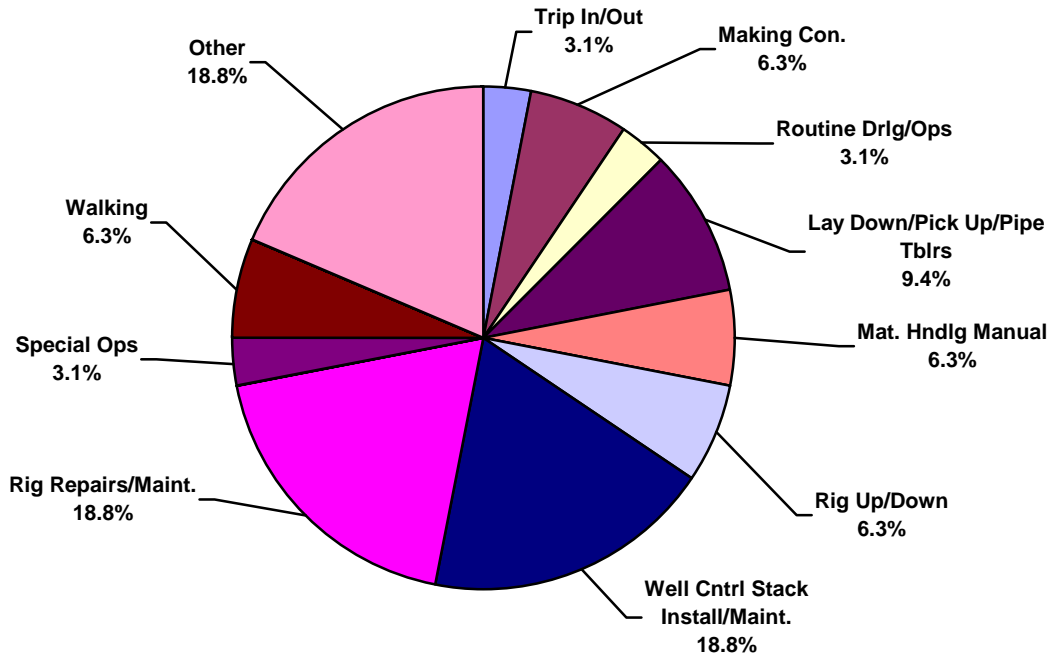


**Central/South America Water Total Recordable Incidents by Equipment (Chart 10)**  
Based on 144 Incidents

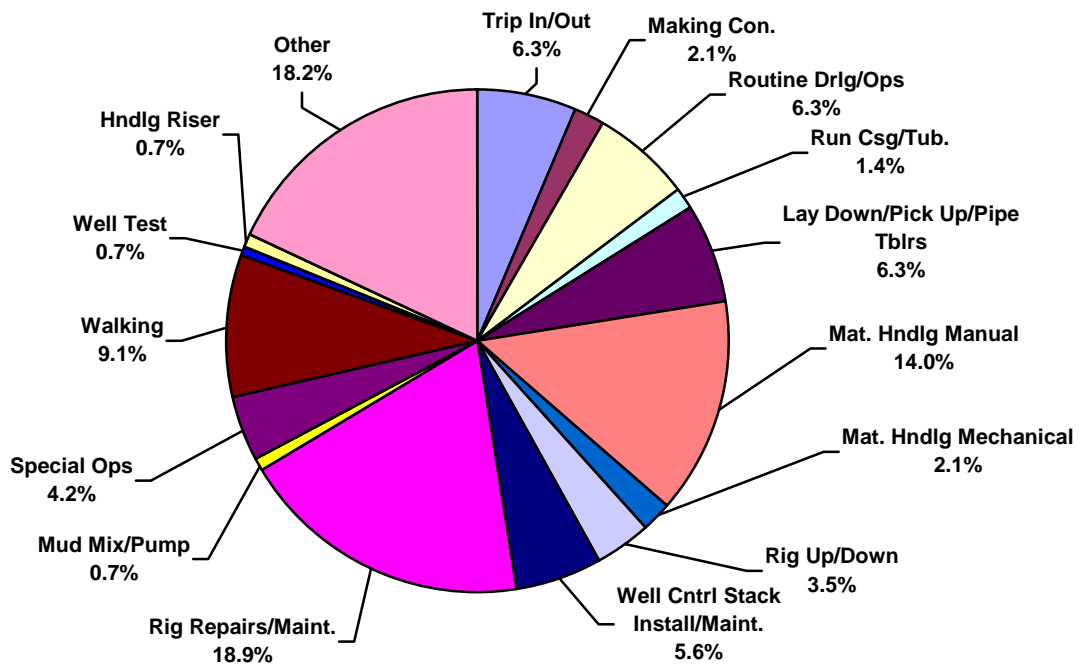




**Central/South America Water Total Lost Time Incidents by Operation (Chart 11)**  
Based on 31 Incidents

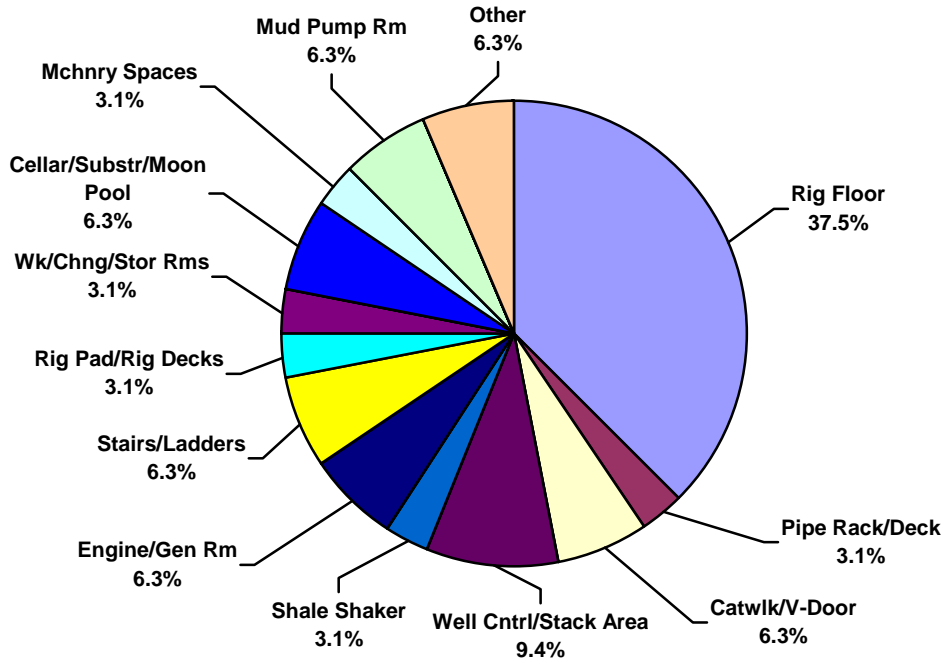


**Central/South America Water Total Recordable Incidents by Operation (Chart 12)**  
Based on 144 Incidents

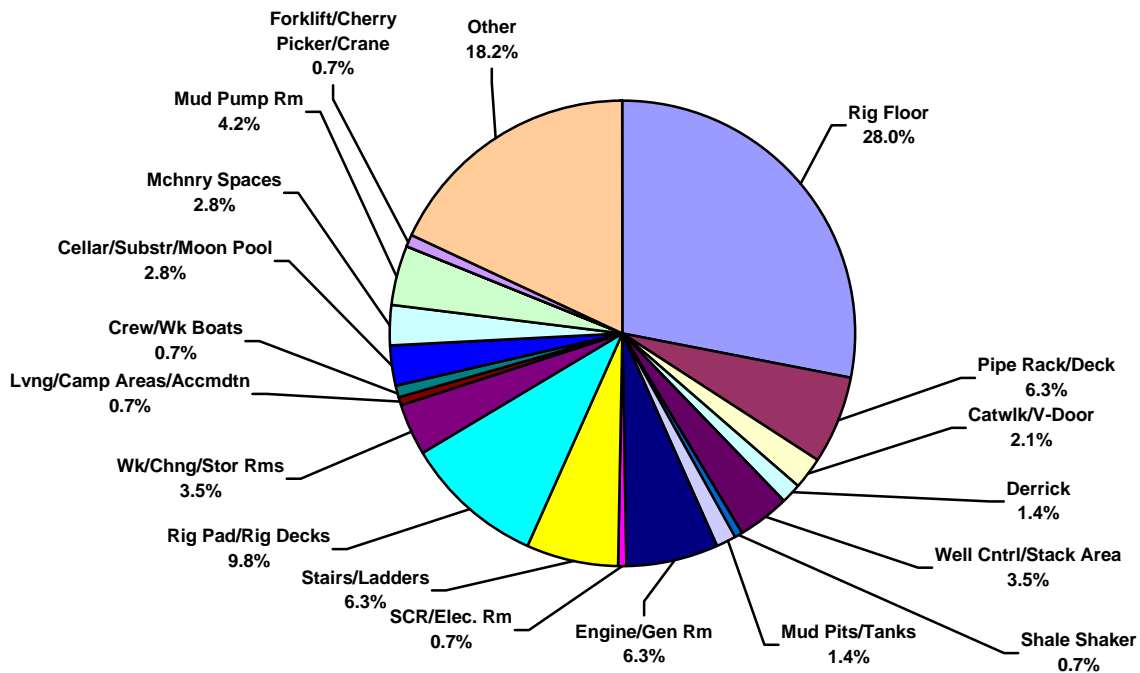




**Central/South America Water Total Lost Time Incidents by Location (Chart 13)**  
Based on 31 Incidents

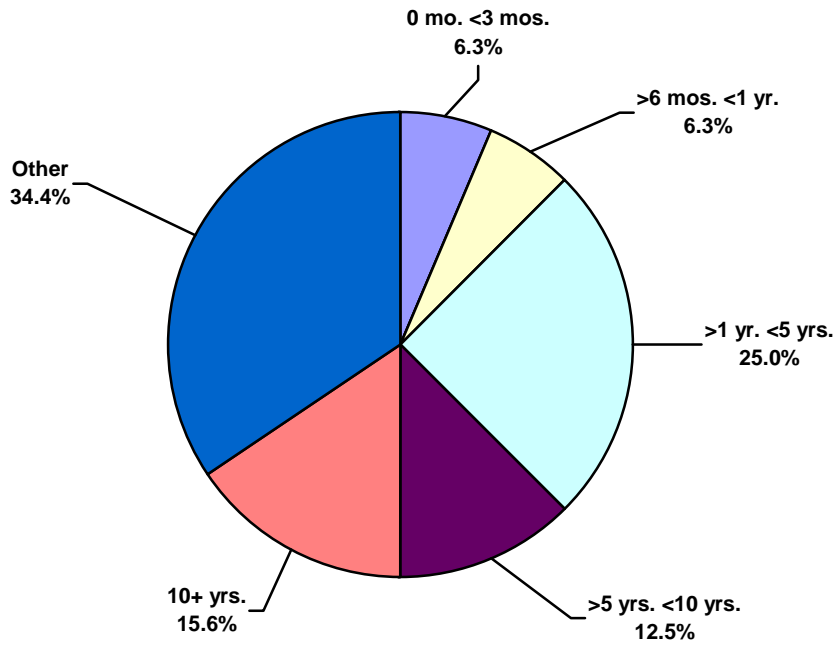


**Central/South America Water Total Recordable Incidents by Location (Chart 14)**  
Based on 144 Incidents

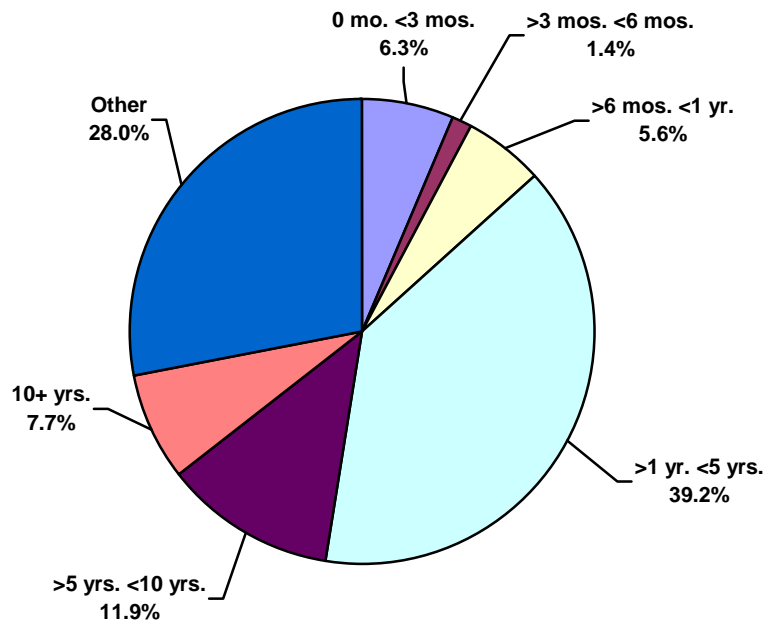




**Central/South America Water Total Lost Time Incidents by Time in Service (Chart 15)**  
Based on 31 Incidents

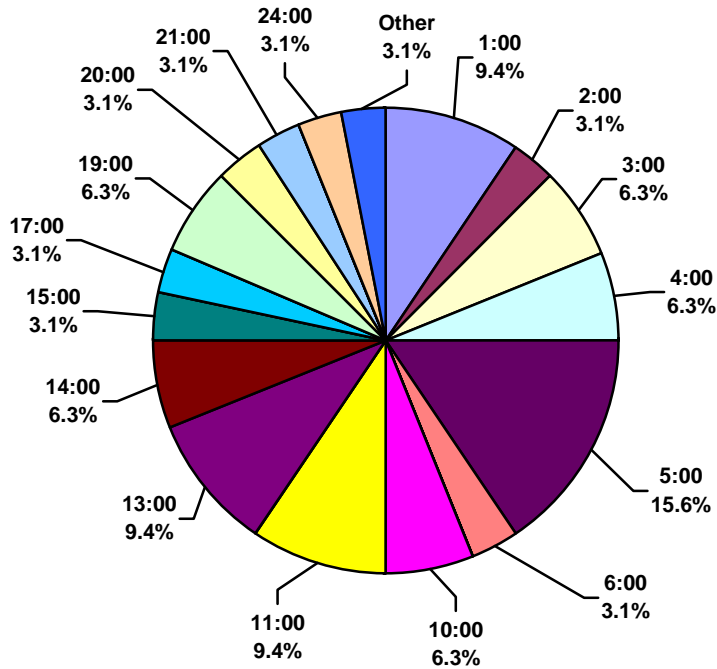


**Central/South America Water Total Recordable Incidents by Time in Service (Chart 16)**  
Based on 144 Incidents





**Central/South America Water Total Lost Time Incidents by Time of Day (Chart 17)**  
Based on 31 Incidents



**Central/South America Water Total Recordable Incidents by Time of Day (Chart 18)**  
Based on 144 Incidents

