



IADC ASP PROGRAM

2002



Summary of Occupational Incidents (Central/South America Land Totals)

Issued 1 May 2003



Table of Contents

(Table of Contents is Hyperlinked, Just click on Topic & go)

2002 ASP PROGRAM CENTRAL/SOUTH AMERICA LAND TOTALS	3
IADC 2002 CENTRAL/SOUTH AMERICA LAND TOTALS (TABLE 1)	3
<i>Central/South America Land Total Incidence Rates vs Manhours (Figure 1).....</i>	<i>3</i>
IADC 2002 CENTRAL/SOUTH AMERICA LAND CHART	4
<i>Central/South America Land Total Recordable Incidents by Month (Chart 2).....</i>	<i>4</i>
<i>Central/South America Land Total Lost Time Incidents by Occupation (Chart 3).....</i>	<i>5</i>
<i>Central/South America Land Total Recordable Incidents by Occupation (Chart 4).....</i>	<i>5</i>
<i>Central/South America Land Total Lost Time Incidents by Body Part (Chart 5)</i>	<i>6</i>
<i>Central/South America Land Total Recordable Incidents by Body Part (Chart 6).....</i>	<i>6</i>
<i>Central/South America Land Total Lost Time Incidents by Incident Type (Chart 7).....</i>	<i>7</i>
<i>Central/South America Land Total Recordable Incidents by Incident Type (Chart 8)</i>	<i>7</i>
<i>Central/South America Land Total Lost Time Incidents by Equipment (Chart 9)</i>	<i>8</i>
<i>Central/South America Land Total Recordable Incidents by Equipment (Chart 10)</i>	<i>8</i>
<i>Central/South America Land Total Lost Time Incidents by Operation (Chart 11).....</i>	<i>9</i>
<i>Central/South America Land Total Recordable Incidents by Operation (Chart 12)</i>	<i>9</i>
<i>Central/South America Land Total Lost Time Incidents by Location (Chart 13)</i>	<i>10</i>
<i>Central/South America Land Total Recordable Incidents by Location (Chart 14).....</i>	<i>10</i>
<i>Central/South America Land Total Lost Time Incidents by Time in Service (Chart 15).....</i>	<i>11</i>
<i>Central/South America Land Total Recordable Incidents by Time in Service (Chart 16).....</i>	<i>11</i>
<i>Central/South America Land Total Lost Time Incidents by Time of Day (Chart 17).....</i>	<i>12</i>
<i>Central/South America Land Total Recordable Incidents by Time of Day (Chart 18).....</i>	<i>12</i>



2002 ASP Program Central/South America Land Totals

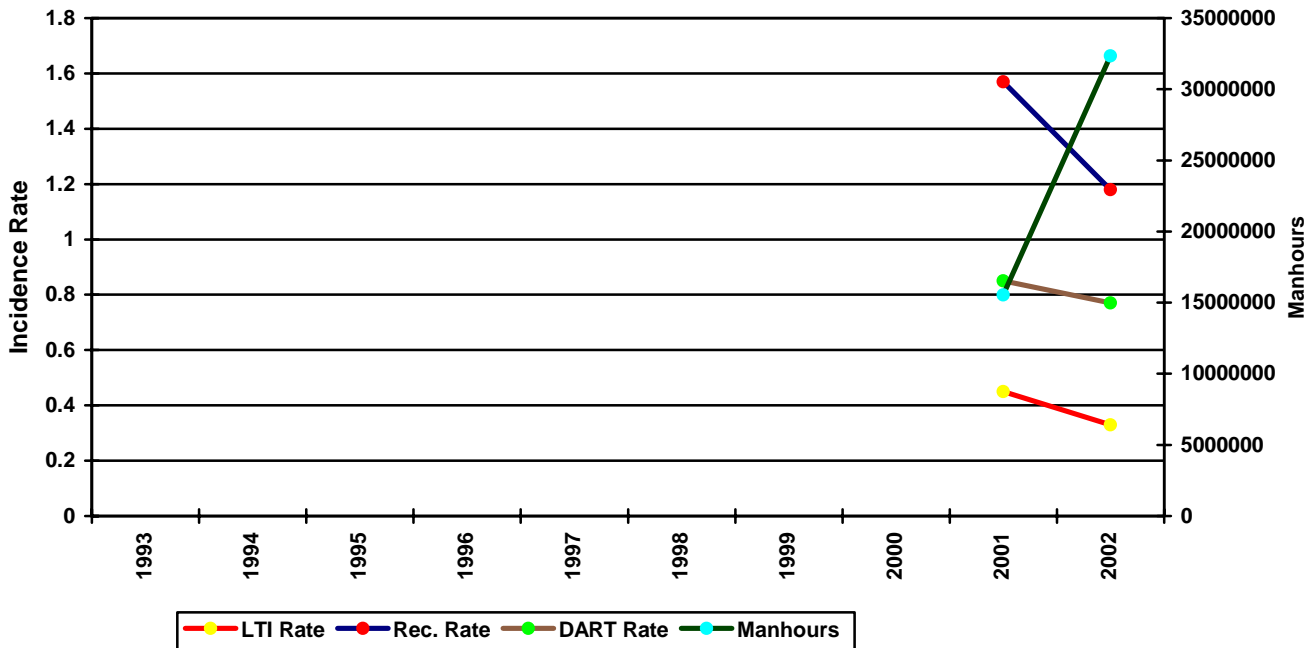
IADC 2002 Central/South America Land Totals (Table 1)

	<u>Total</u>
Total Manhours	32,352,996.00
Total Medical Treatment Incidents	66
Total Restricted Work Incidents	71
Total Lost Time Incidents	54
Total Fatalities	0
Total Recordables	191
MTO Incidence Rate	0.41
RWC Incidence Rate	0.44
LTI Incidence Rate	0.33
LTI Frequency Rate	1.67
DART Incidence Rate	0.77
DART Frequency Rate	3.86
Recordable Incidence Rate	1.18
Recordable Frequency Rate	5.90

Companies Reporting: Land – 15

Medical Treatment Incidence Rate = MTOs X 200,000
 Restricted Work Incidence Rate = RWCs X 200,000
 Lost Time Incidence Rate = LTIs X 200,000
 DART Incidence Rate = LTIs + RWC X 200,000
 Recordable Incidence Rate = RCRD X 200,000
 Lost Time Frequency Rate = LTIs X 1,000,000
 DART Frequency Rate = LTIs + RWC X 1,000,000
 Recordable Frequency Rate = RCRD X 1,000,000

Central/South America Land Total Incidence Rates vs Manhours (Figure 1)

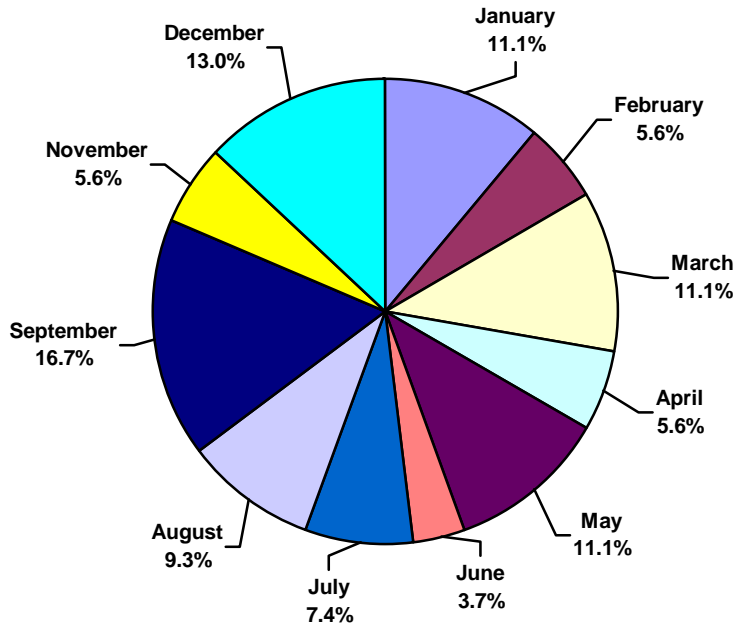




IADC 2002 Central/South America Land Chart

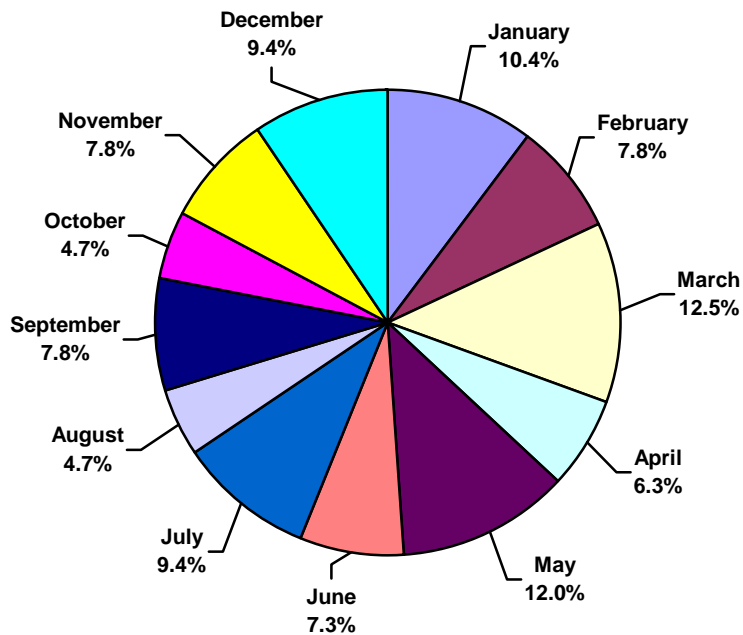
Central/South America Land Total Lost Time Incidents by Month (Chart 1)

Based on 54 Incidents



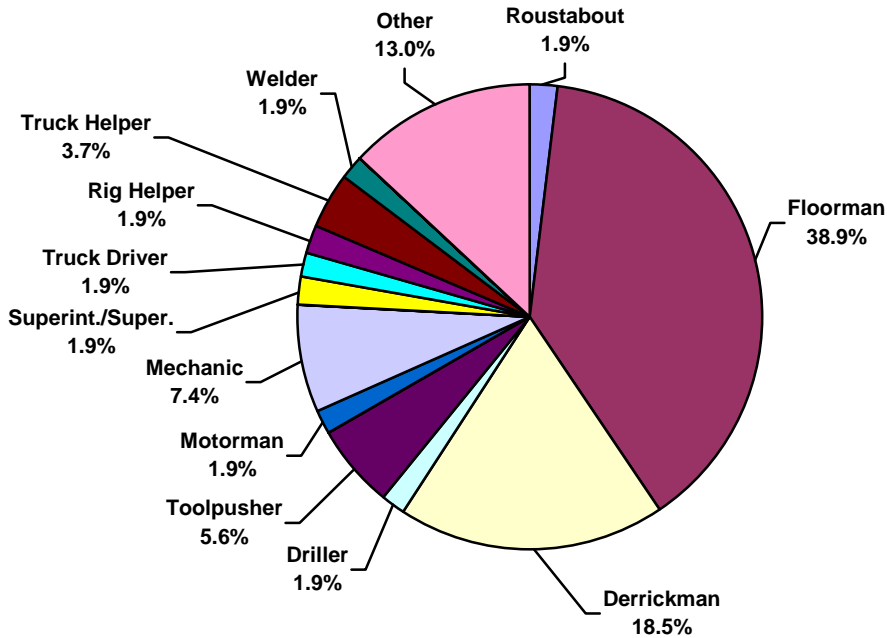
Central/South America Land Total Recordable Incidents by Month (Chart 2)

Based on 191 Incidents

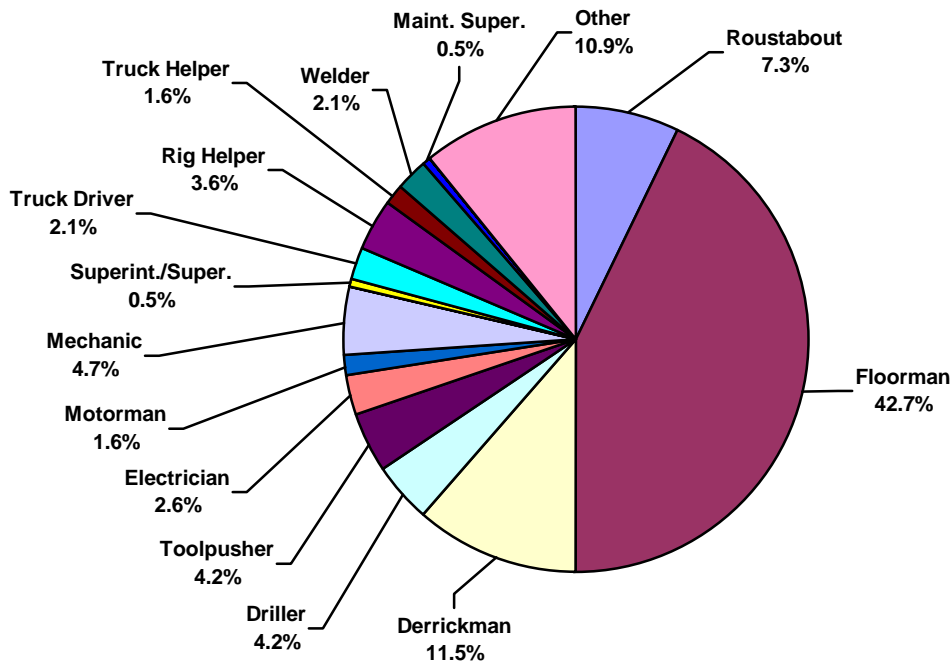




Central/South America Land Total Lost Time Incidents by Occupation (Chart 3)
Based on 54 Incidents

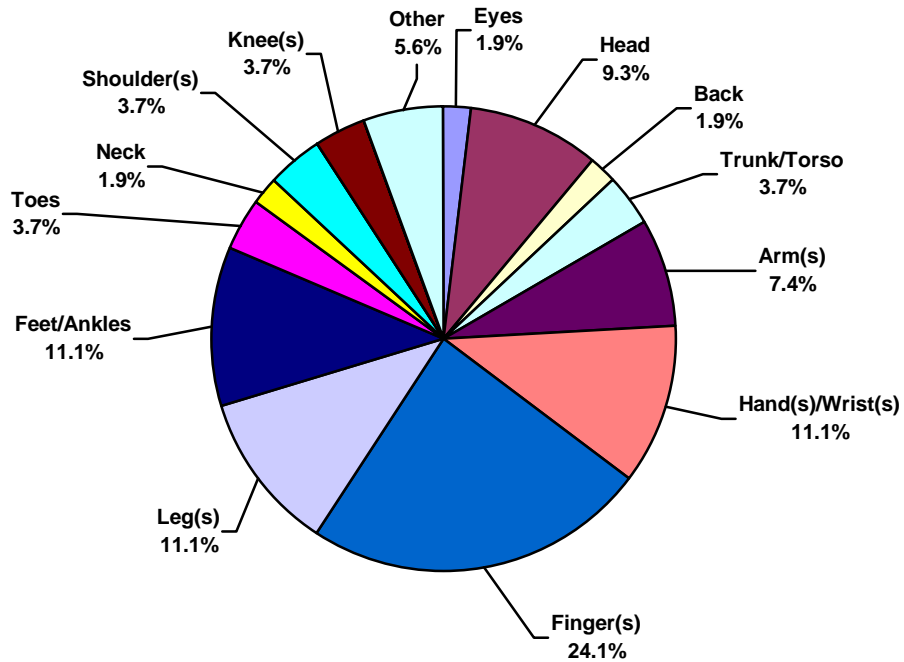


Central/South America Land Total Recordable Incidents by Occupation (Chart 4)
Based on 191 Incidents

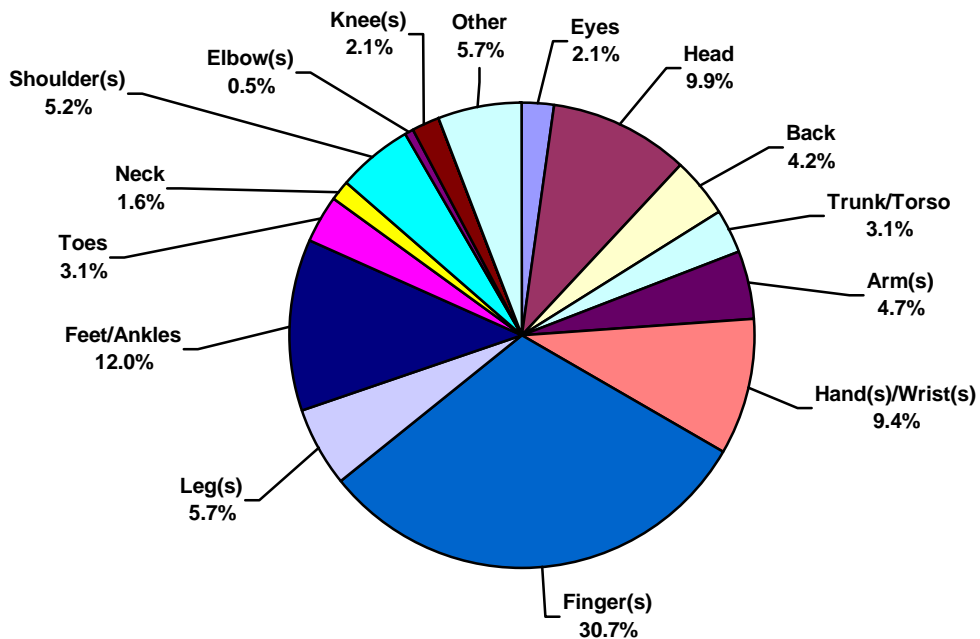




Central/South America Land Total Lost Time Incidents by Body Part (Chart 5)
Based on 54 Incidents

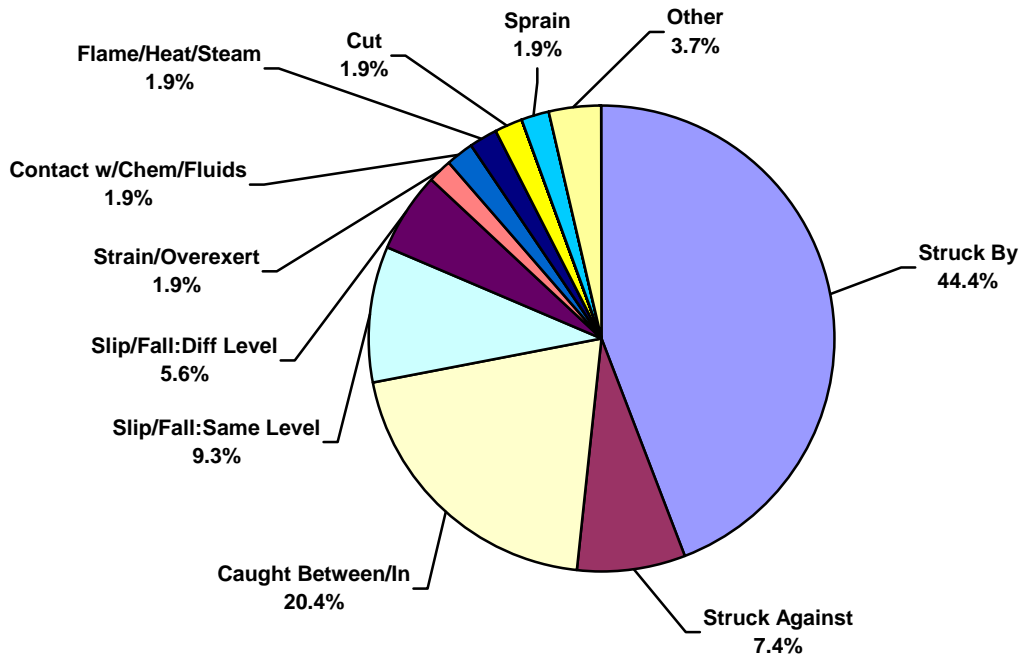


Central/South America Land Total Recordable Incidents by Body Part (Chart 6)
Based on 191 Incidents

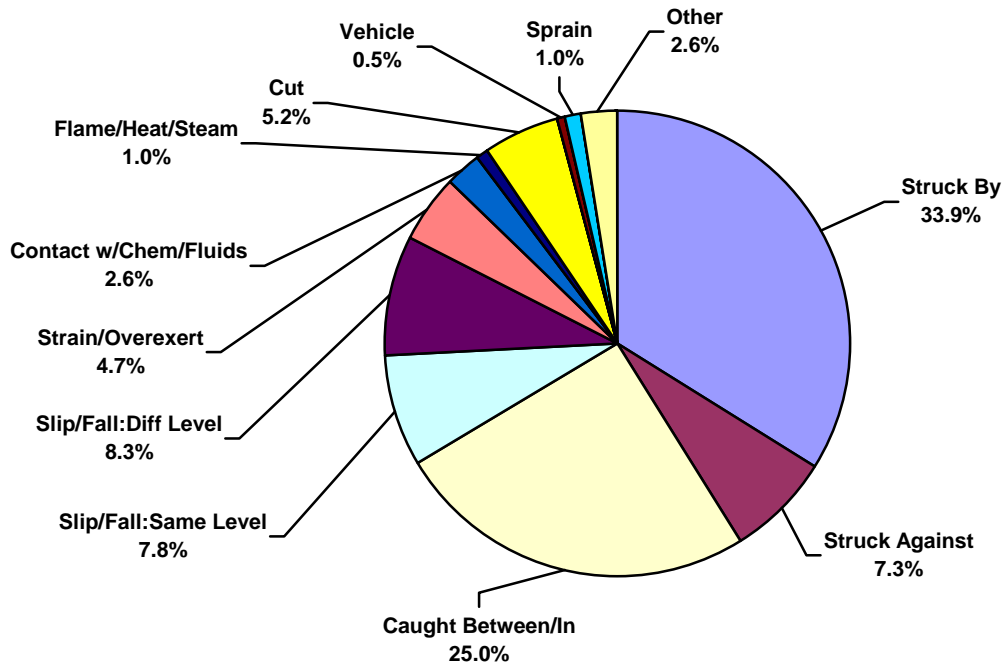




Central/South America Land Total Lost Time Incidents by Incident Type (Chart 7)
Based on 54 Incidents

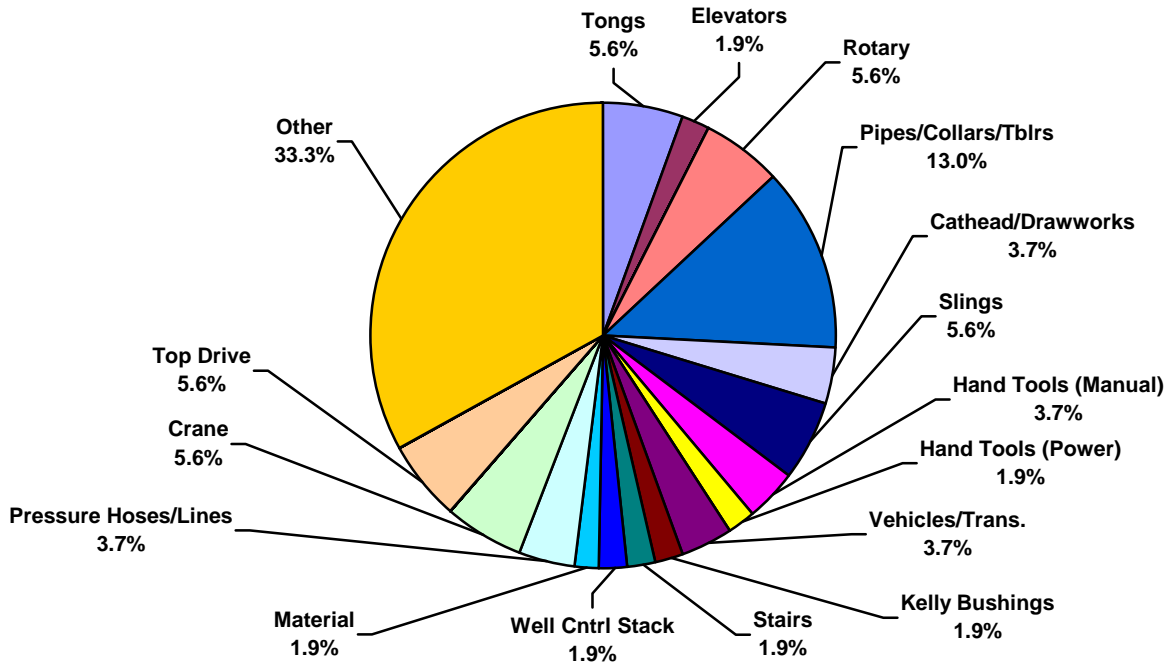


Central/South America Land Total Recordable Incidents by Incident Type (Chart 8)
Based on 191 Incidents

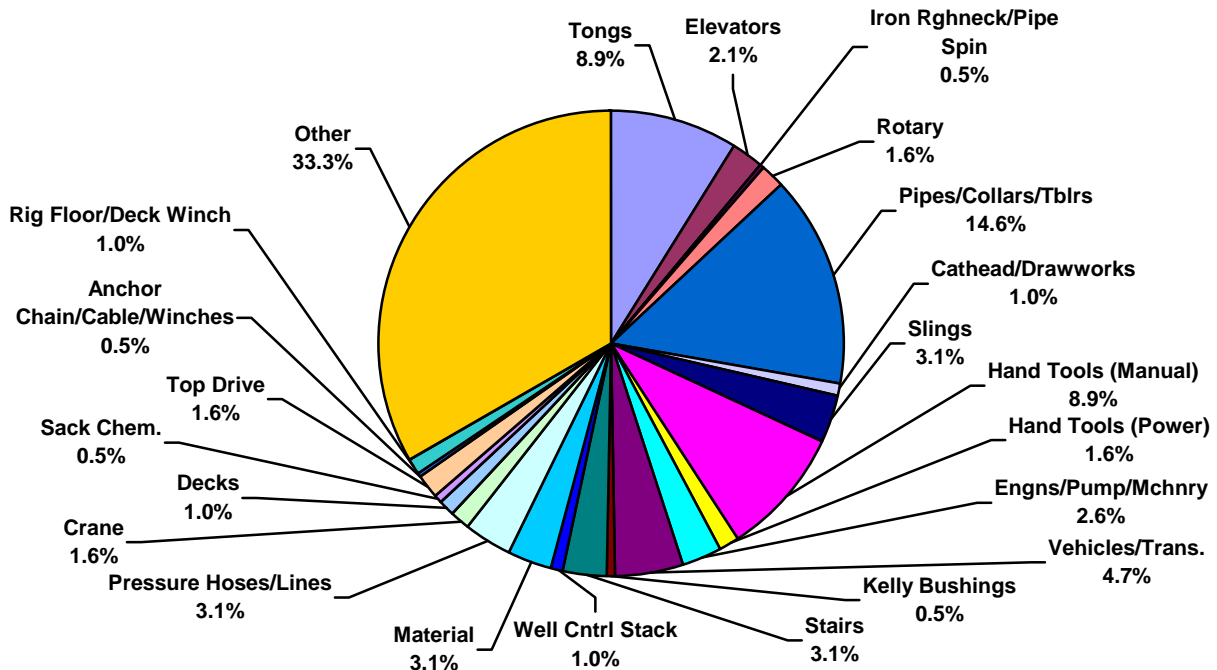




Central/South America Land Total Lost Time Incidents by Equipment (Chart 9)
Based on 54 Incidents

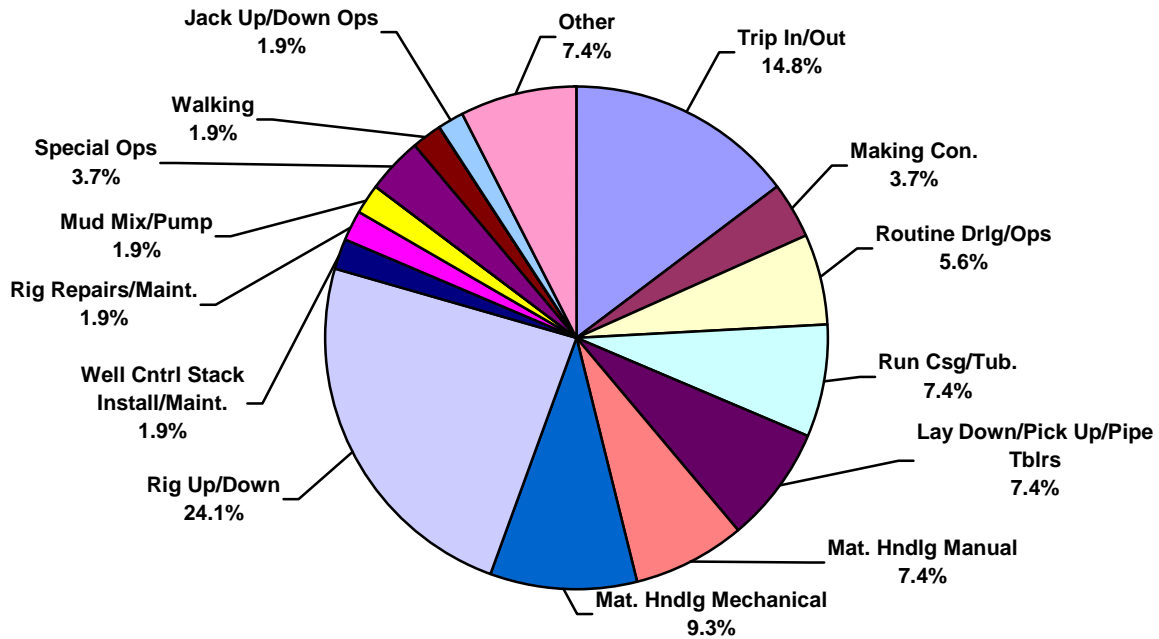


Central/South America Land Total Recordable Incidents by Equipment (Chart 10)
Based on 191 Incidents

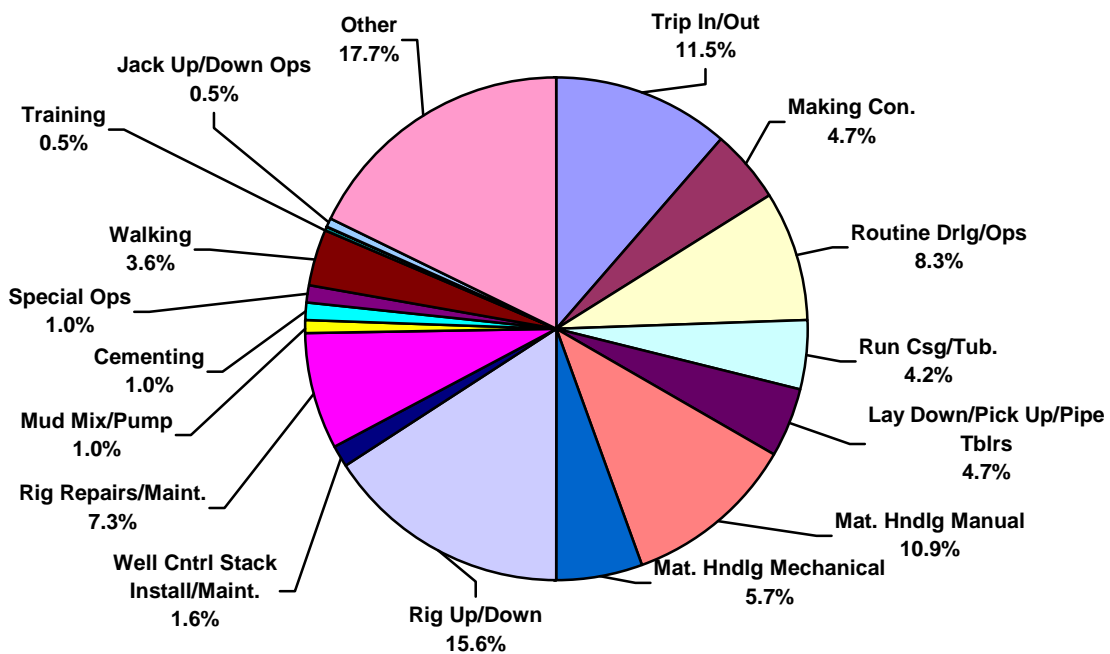




Central/South America Land Total Lost Time Incidents by Operation (Chart 11)
Based on 54 Incidents

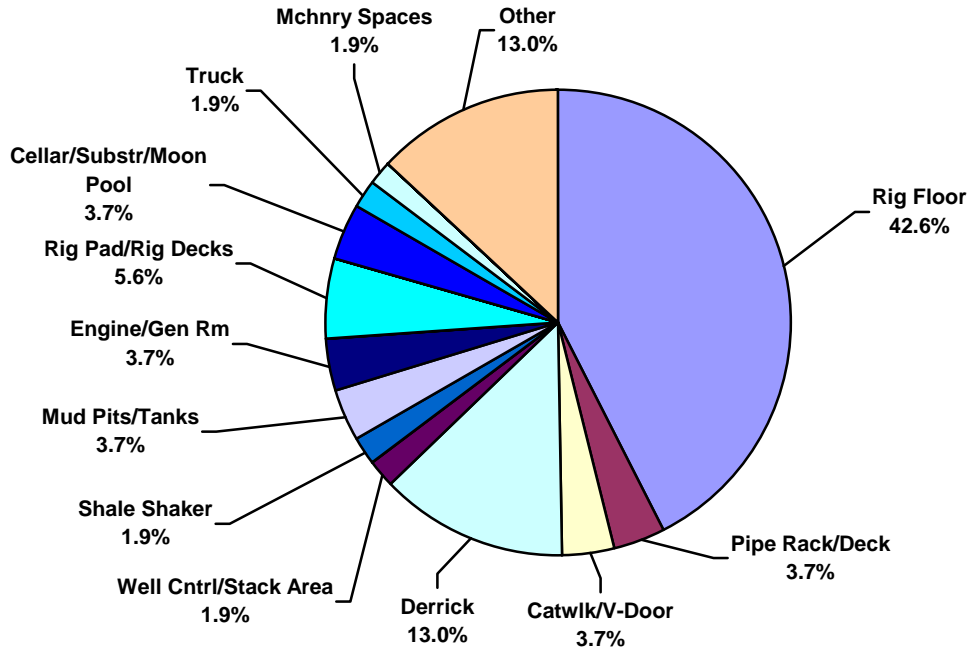


Central/South America Land Total Recordable Incidents by Operation (Chart 12)
Based on 191 Incidents

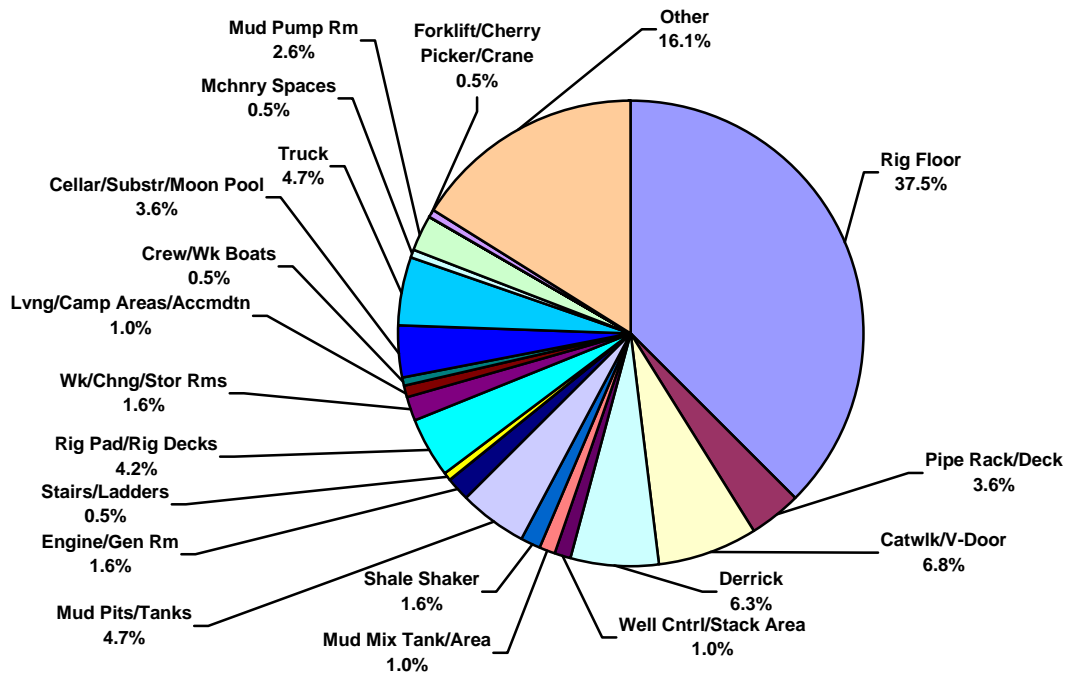




Central/South America Land Total Lost Time Incidents by Location (Chart 13)
Based on 54 Incidents

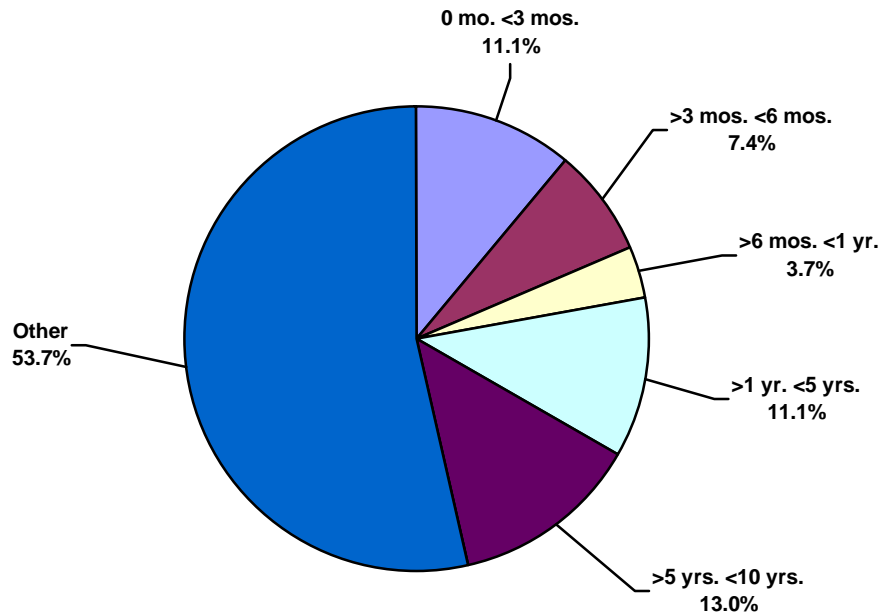


Central/South America Land Total Recordable Incidents by Location (Chart 14)
Based on 191 Incidents

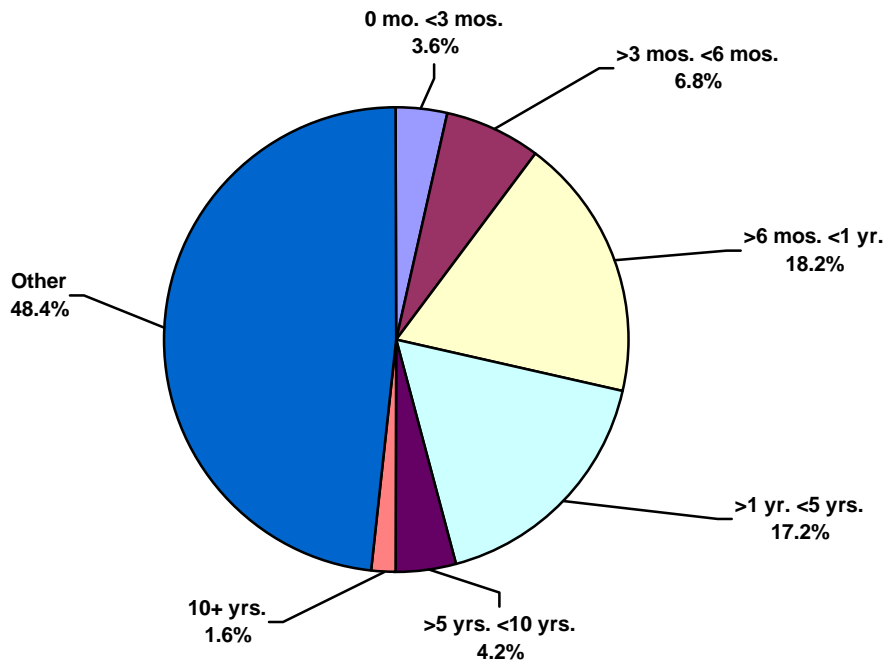




Central/South America Land Total Lost Time Incidents by Time in Service (Chart 15)
Based on 54 Incidents

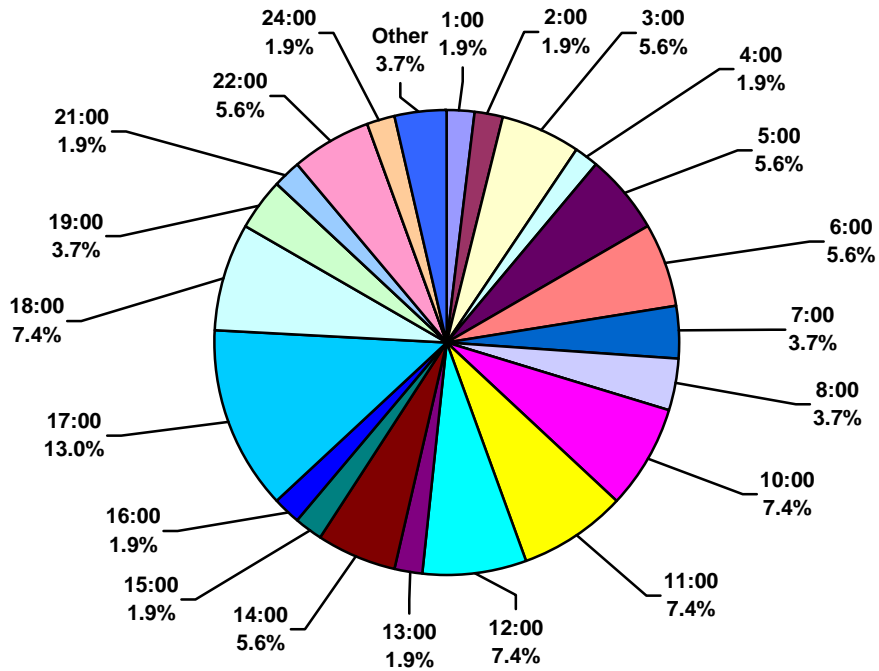


Central/South America Land Total Recordable Incidents by Time in Service (Chart 16)
Based on 191 Incidents





Central/South America Land Total Lost Time Incidents by Time of Day (Chart 17)
Based on 54 Incidents



Central/South America Land Total Recordable Incidents by Time of Day (Chart 18)
Based on 191 Incidents

