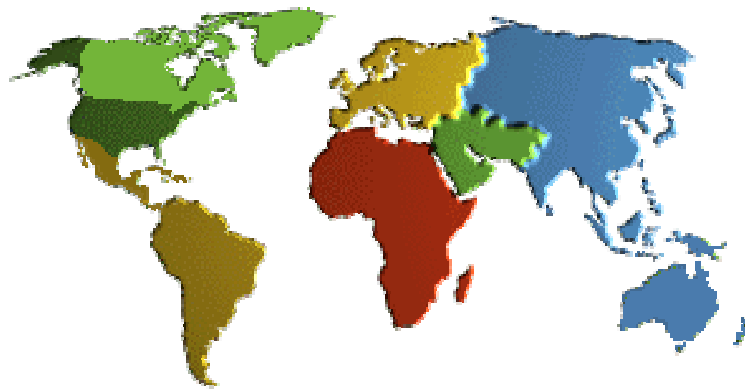




IADC ASP PROGRAM

2002



Summary of Occupational Incidents (Canada Land Totals)

Issued 1 May 2003



Table of Contents

(Table of Contents is Hyperlinked, Just click on Topic & go)

2002 ASP PROGRAM CANADA LAND TOTALS	3
IADC 2002 CANADA LAND TOTALS (TABLE 1)	3
<i>Canada Land Total Incidence Rates vs Manhours (Figure 1)</i>	3
IADC 2002 CANADA LAND CHART	4
<i>Canada Land Total Lost Time Incidents by Month (Chart 1)</i>	4
<i>Canada Land Total Recordable Incidents by Month (Chart 2)</i>	4
<i>Canada Land Total Lost Time Incidents by Occupation (Chart 3)</i>	5
<i>Canada Land Total Recordable Incidents by Occupation (Chart 4)</i>	5
<i>Canada Land Total Lost Time Incidents by Body Part (Chart 5)</i>	6
<i>Canada Land Total Recordable Incidents by Body Part (Chart 6)</i>	6
<i>Canada Land Total Lost Time Incidents by Incident Type (Chart 7)</i>	7
<i>Canada Land Total Recordable Incidents by Incident Type (Chart 8)</i>	7
<i>Canada Land Total Lost Time Incidents by Equipment (Chart 9)</i>	8
<i>Canada Land Total Recordable Incidents by Equipment (Chart 10)</i>	8
<i>Canada Land Total Lost Time Incidents by Operation (Chart 11)</i>	9
<i>Canada Land Total Recordable Incidents by Operation (Chart 12)</i>	9
<i>Canada Land Total Lost Time Incidents by Location (Chart 13)</i>	10
<i>Canada Land Total Recordable Incidents by Location (Chart 14)</i>	10
<i>Canada Land Total Lost Time Incidents by Time in Service (Chart 15)</i>	11
<i>Canada Land Total Recordable Incidents by Time in Service (Chart 16)</i>	11
<i>Canada Land Total Lost Time Incidents by Time of Day (Chart 17)</i>	12
<i>Canada Land Total Recordable Incidents by Time of Day (Chart 18)</i>	12



2002 ASP Program Canada Land Totals

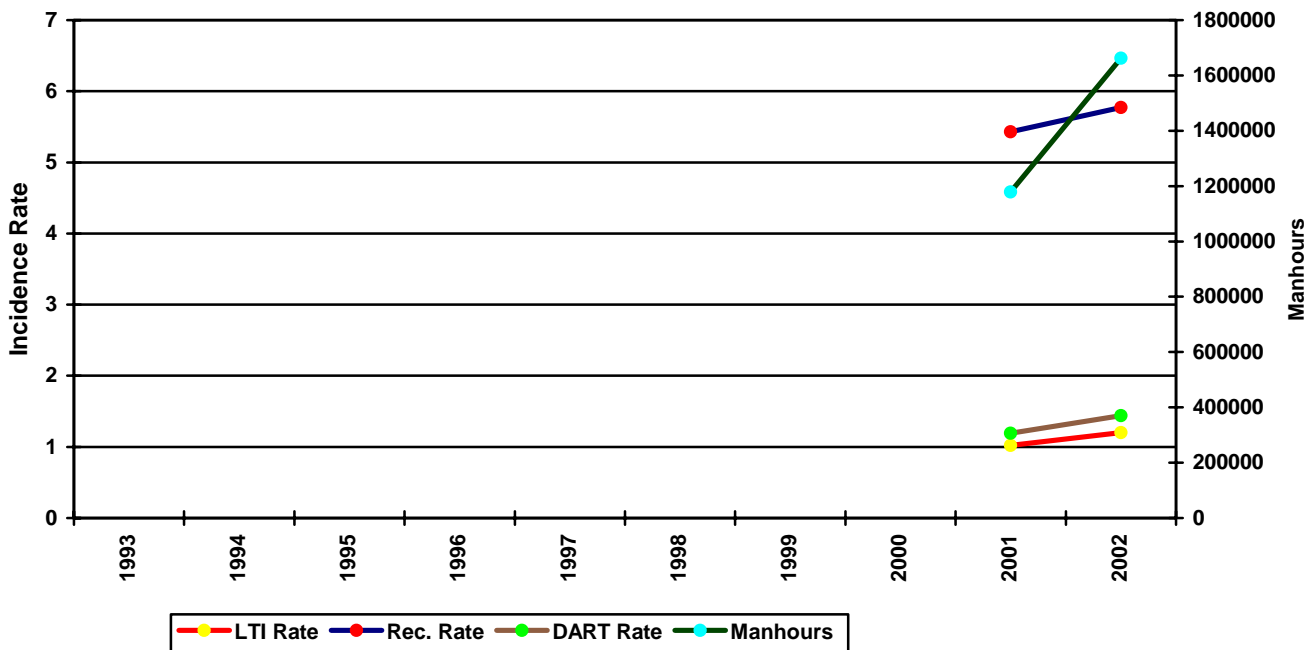
IADC 2002 Canada Land Totals (Table 1)

	<u>Total</u>
Total Manhours	1,662,362.00
Total Medical Treatment Incidents	36
Total Restricted Work Incidents	2
Total Lost Time Incidents	9
Total Fatalities	1
Total Recordables	48
MTO Incidence Rate	4.33
RWC Incidence Rate	0.24
LTI Incidence Rate	1.20
LTI Frequency Rate	6.02
DART Incidence Rate	1.44
DART Frequency Rate	7.22
Recordable Incidence Rate	5.77
Recordable Frequency Rate	28.87

Companies Reporting: Land – 1

Medical Treatment Incidence Rate = MTOs X 200,000
 Restricted Work Incidence Rate = RWCs X 200,000
 Lost Time Incidence Rate = LTIs X 200,000
 DART Incidence Rate = LTIs + RWC X 200,000
 Recordable Incidence Rate = RCRD X 200,000
 Lost Time Frequency Rate = LTIs X 1,000,000
 DART Frequency Rate = LTIs + RWC X 1,000,000
 Recordable Frequency Rate = RCRD X 1,000,000

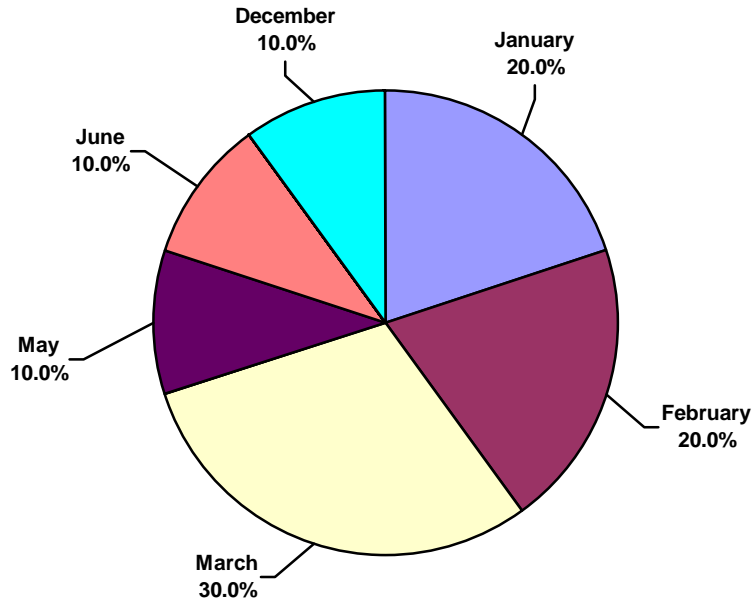
Canada Land Total Incidence Rates vs Manhours (Figure 1)





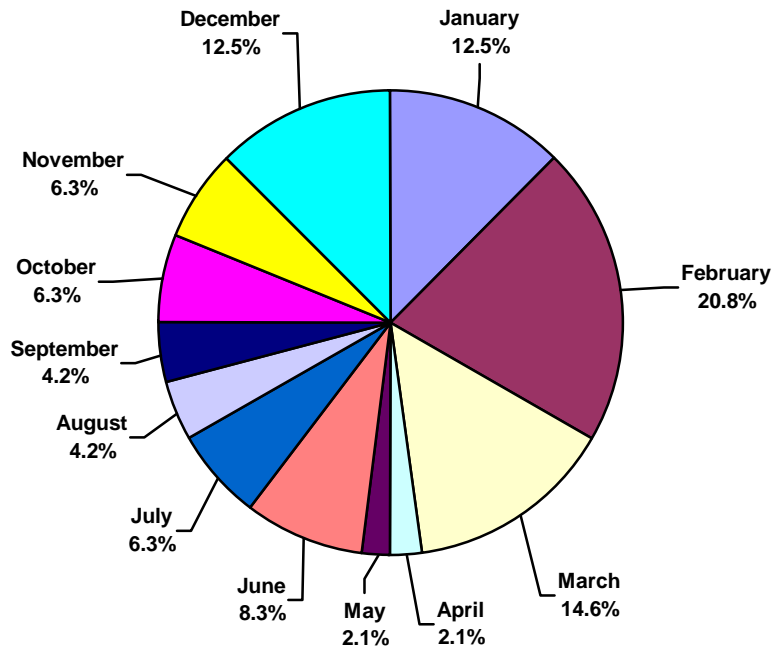
IADC 2002 Canada Land Chart

Canada Land Total Lost Time Incidents by Month (Chart 1)
Based on 9 Incidents



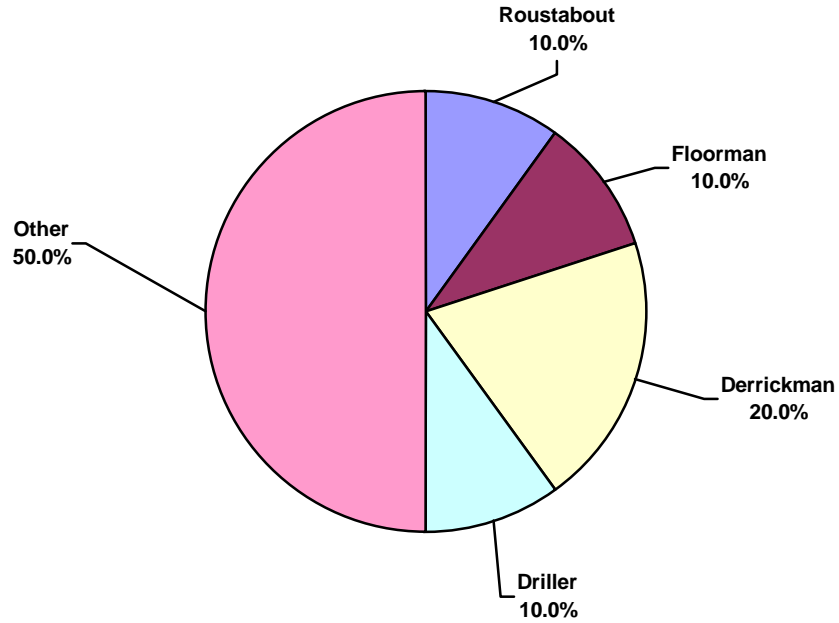
Canada Land Total Recordable Incidents by Month (Chart 2)

Based on 48 Incidents

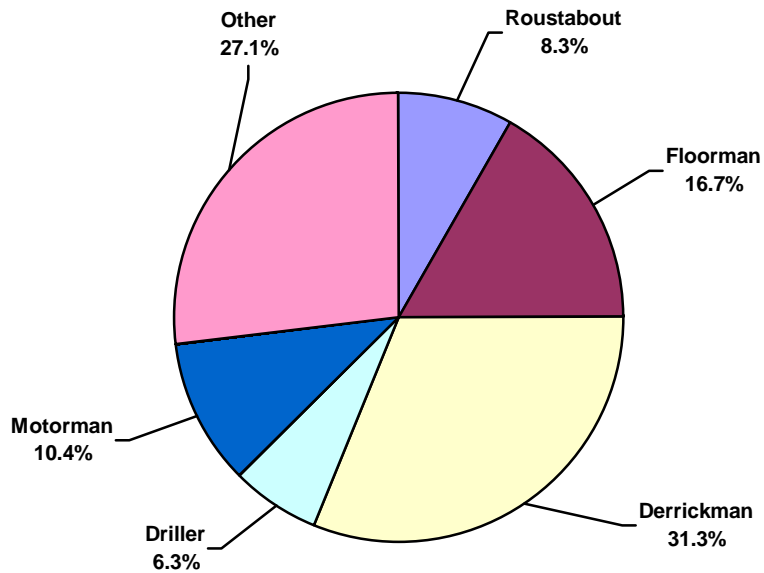




Canada Land Total Lost Time Incidents by Occupation (Chart 3)
Based on 9 Incidents

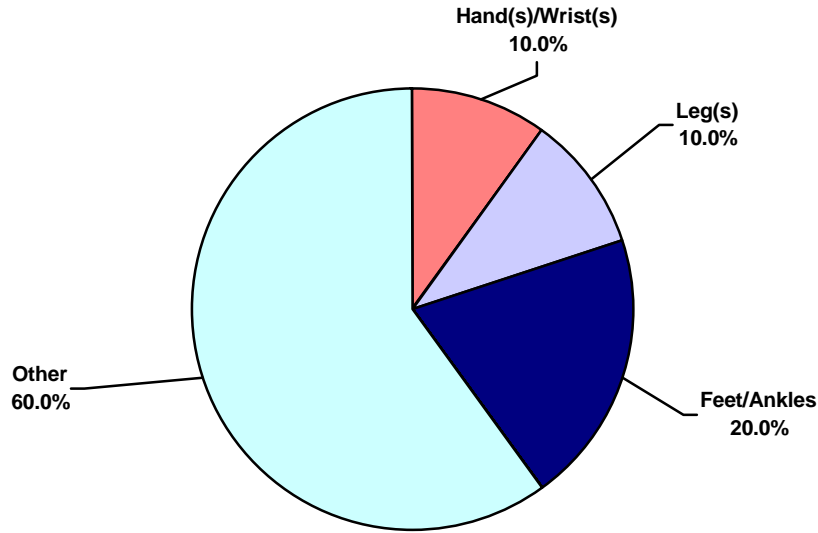


Canada Land Total Recordable Incidents by Occupation (Chart 4)
Based on 48 Incidents

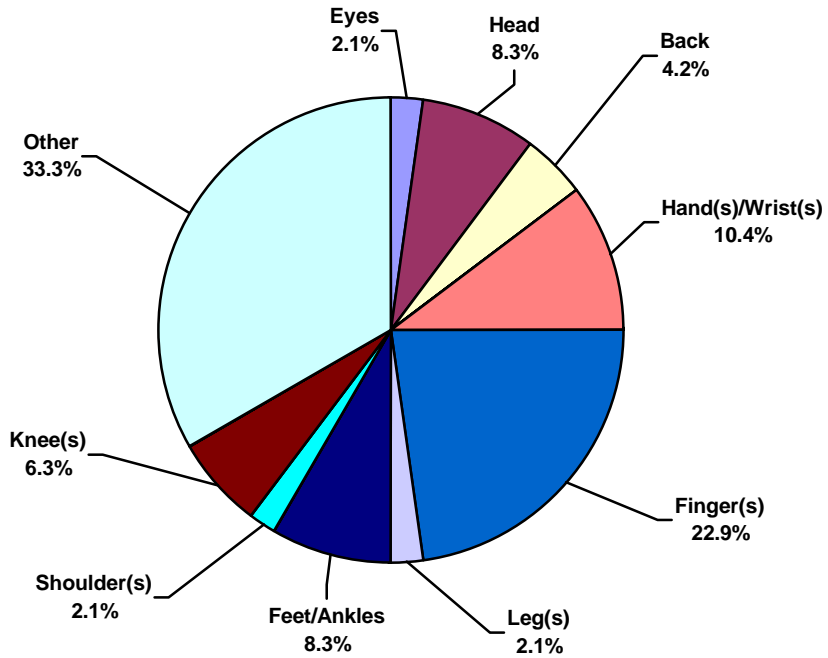




Canada Land Total Lost Time Incidents by Body Part (Chart 5)
Based on 9 Incidents

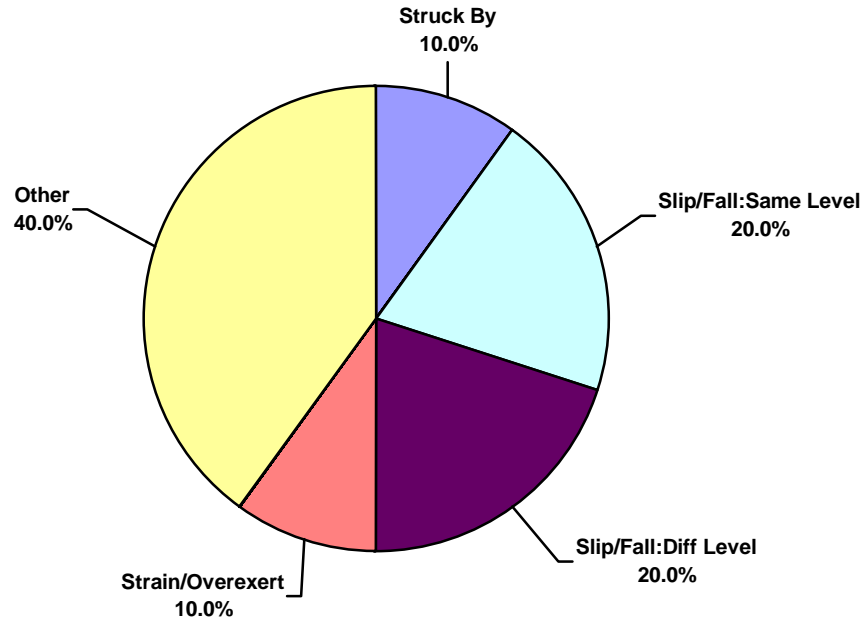


Canada Land Total Recordable Incidents by Body Part (Chart 6)
Based on 48 Incidents

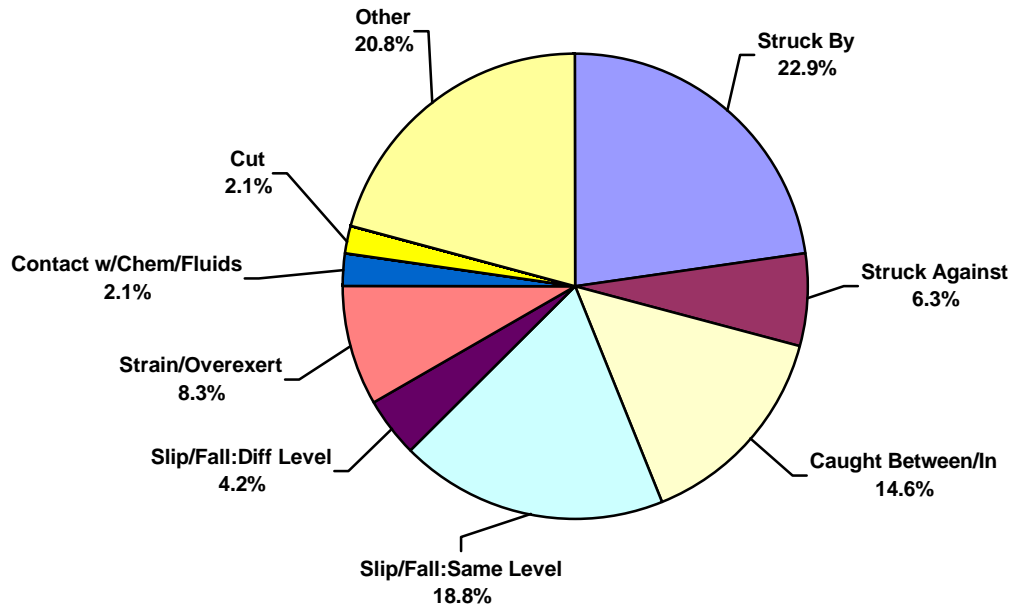




Canada Land Total Lost Time Incidents by Incident Type (Chart 7)
Based on 9 Incidents

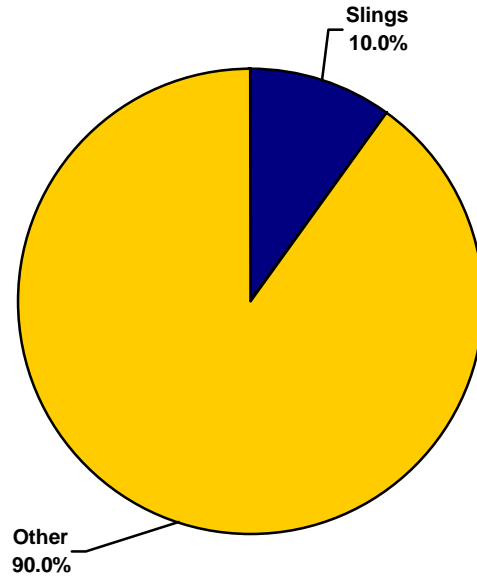


Canada Land Total Recordable Incidents by Incident Type (Chart 8)
Based on 48 Incidents

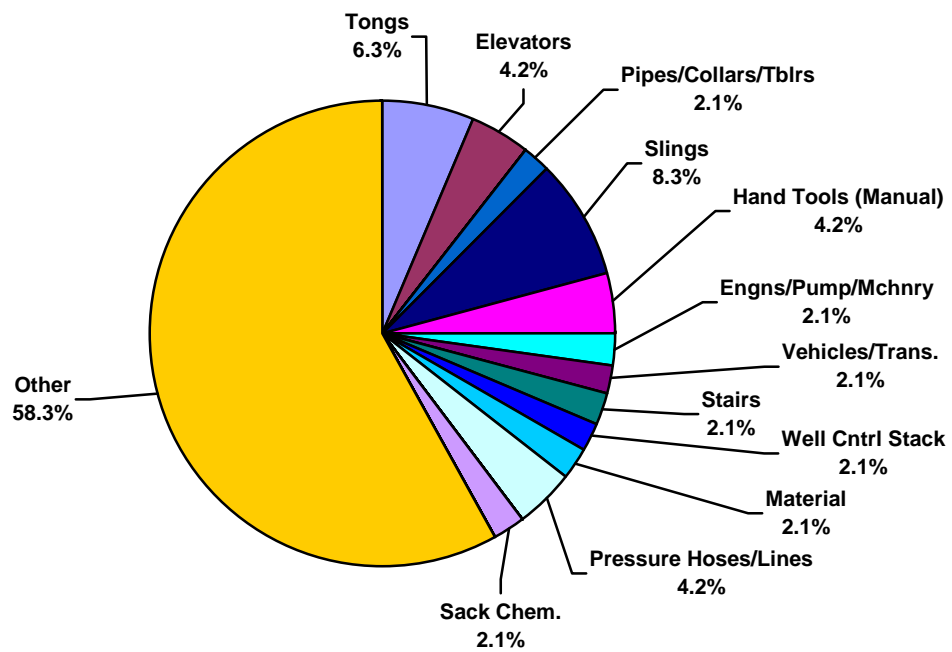




Canada Land Total Lost Time Incidents by Equipment (Chart 9)
Based on 9 Incidents

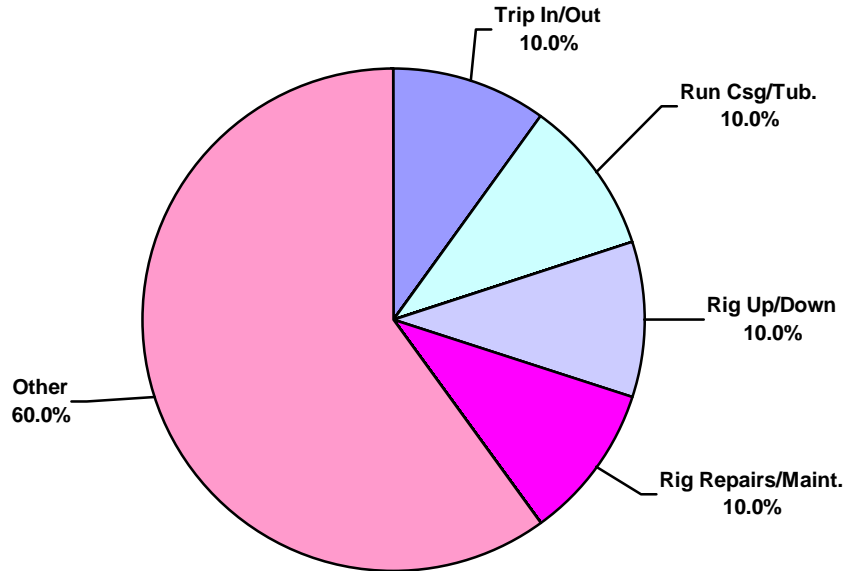


Canada Land Total Recordable Incidents by Equipment (Chart 10)
Based on 48 Incidents

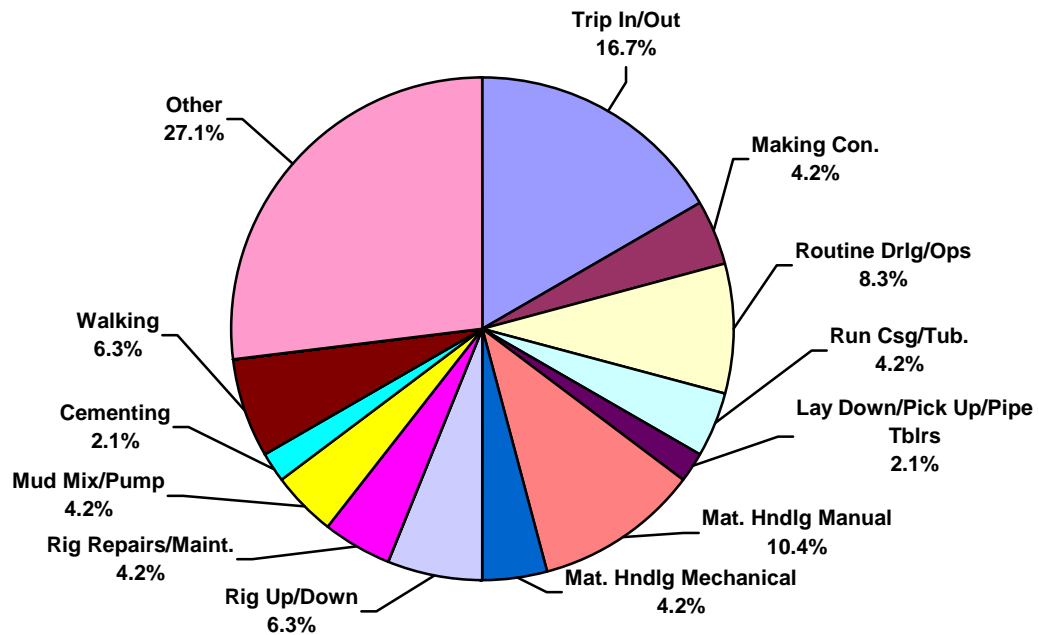




Canada Land Total Lost Time Incidents by Operation (Chart 11)
Based on 9 Incidents

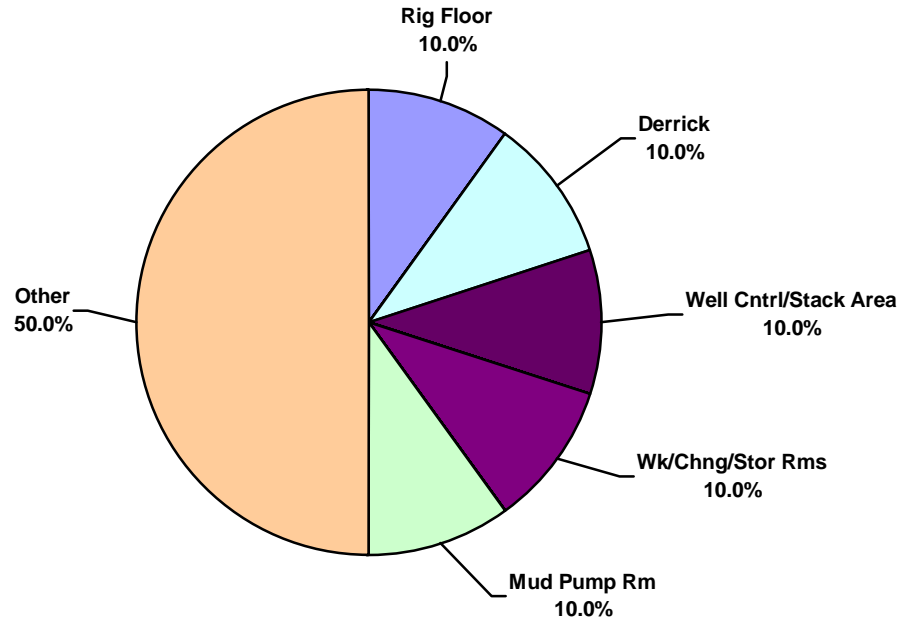


Canada Land Total Recordable Incidents by Operation (Chart 12)
Based on 48 Incidents

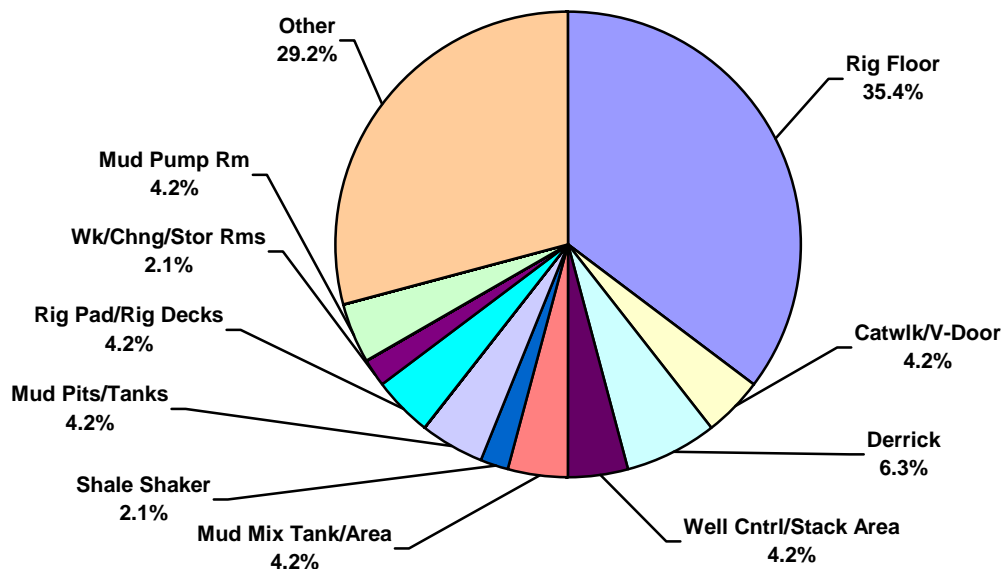




Canada Land Total Lost Time Incidents by Location (Chart 13)
Based on 9 Incidents

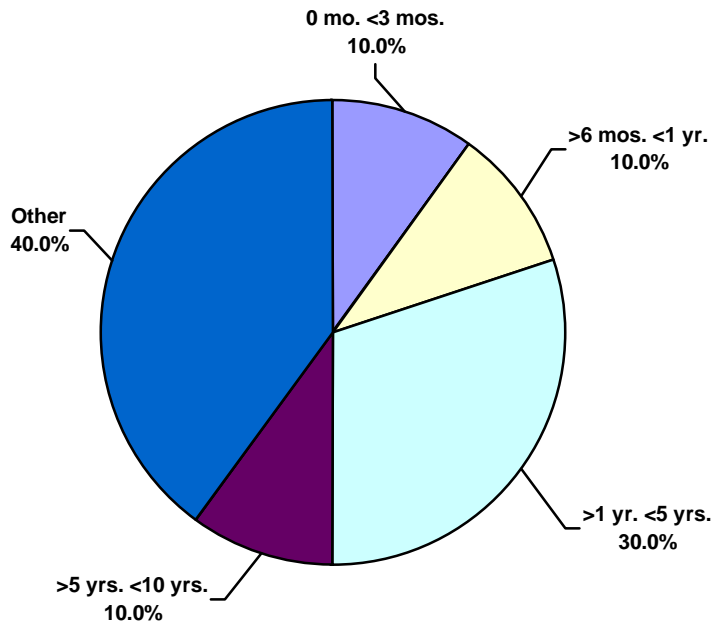


Canada Land Total Recordable Incidents by Location (Chart 14)
Based on 48 Incidents

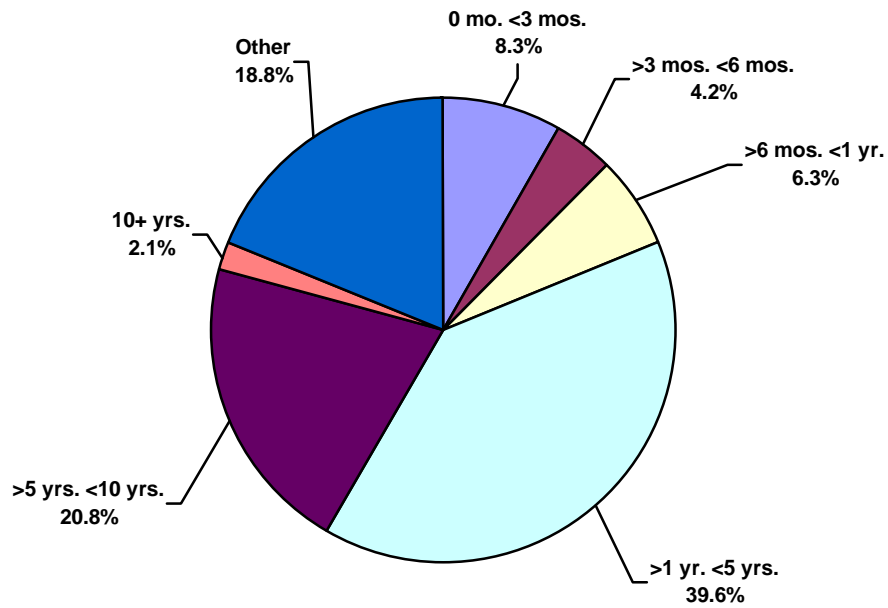




Canada Land Total Lost Time Incidents by Time in Service (Chart 15)
Based on 9 Incidents

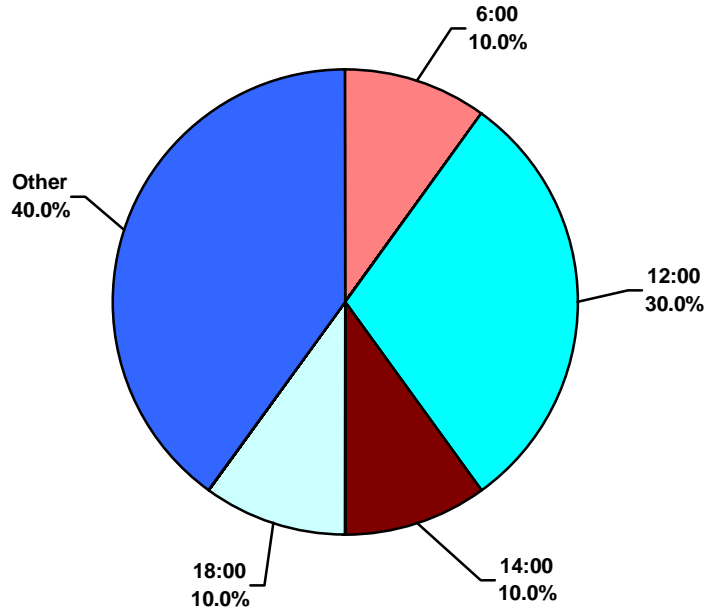


Canada Land Total Recordable Incidents by Time in Service (Chart 16)
Based on 48 Incidents





Canada Land Total Lost Time Incidents by Time of Day (Chart 17)
Based on 9 Incidents



Canada Land Total Recordable Incidents by Time of Day (Chart 18)
Based on 48 Incidents

