



IADC ASP PROGRAM

2002



Summary of Occupational Incidents (Asia Pacific Water Totals)

Issued 1 May 2003



Table of Contents

(Table of Contents is Hyperlinked, Just click on Topic & go)

2002 ASP PROGRAM ASIA PACIFIC WATER TOTALS	3
IADC 2002 ASIA PACIFIC WATER TOTALS (TABLE 1)	3
<i>Asia Pacific Water Incidence Rates vs Manhours (Figure 1)</i>	<i>3</i>
IADC 2002 ASIA PACIFIC WATER CHARTS.....	4
<i>Asia Pacific Water Total Lost Time Incidents by Month (Chart 1)</i>	<i>4</i>
<i>Asia Pacific Water Total Recordable Incidents by Month (Chart 2).....</i>	<i>4</i>
<i>Asia Pacific Water Total Lost Time Incidents by Occupation (Chart 3)</i>	<i>5</i>
<i>Asia Pacific Water Total Recordable Incidents by Occupation (Chart 4).....</i>	<i>5</i>
<i>Asia Pacific Water Total Lost Time Incidents by Body Part (Chart 5)</i>	<i>6</i>
<i>Asia Pacific Water Total Recordable Incidents by Body Part (Chart 6).....</i>	<i>6</i>
<i>Asia Pacific Water Total Lost Time Incidents by Incident Type (Chart 7).....</i>	<i>7</i>
<i>Asia Pacific Water Total Recordable Incidents by Incident Type (Chart 8)</i>	<i>7</i>
<i>Asia Pacific Water Total Lost Time Incidents by Equipment (Chart 9)</i>	<i>8</i>
<i>Asia Pacific Water Total Recordable Incidents by Equipment (Chart 10)</i>	<i>8</i>
<i>Asia Pacific Water Total Lost Time Incidents by Operation (Chart 11).....</i>	<i>9</i>
<i>Asia Pacific Water Total Recordable Incidents by Operation (Chart 12)</i>	<i>9</i>
<i>Asia Pacific Water Total Lost Time Incidents by Location (Chart 13)</i>	<i>10</i>
<i>Asia Pacific Water Total Recordable Incidents by Location (Chart 14).....</i>	<i>10</i>
<i>Asia Pacific Water Total Lost Time Incidents by Time in Service (Chart 15).....</i>	<i>11</i>
<i>Asia Pacific Water Total Recordable Incidents by Time in Service (Chart 16).....</i>	<i>11</i>
<i>Asia Pacific Water Total Lost Time Incidents by Time of Day (Chart 17).....</i>	<i>12</i>
<i>Asia Pacific Water Total Recordable Incidents by Time of Day (Chart 18).....</i>	<i>12</i>



2002 ASP Program Asia Pacific Water Totals

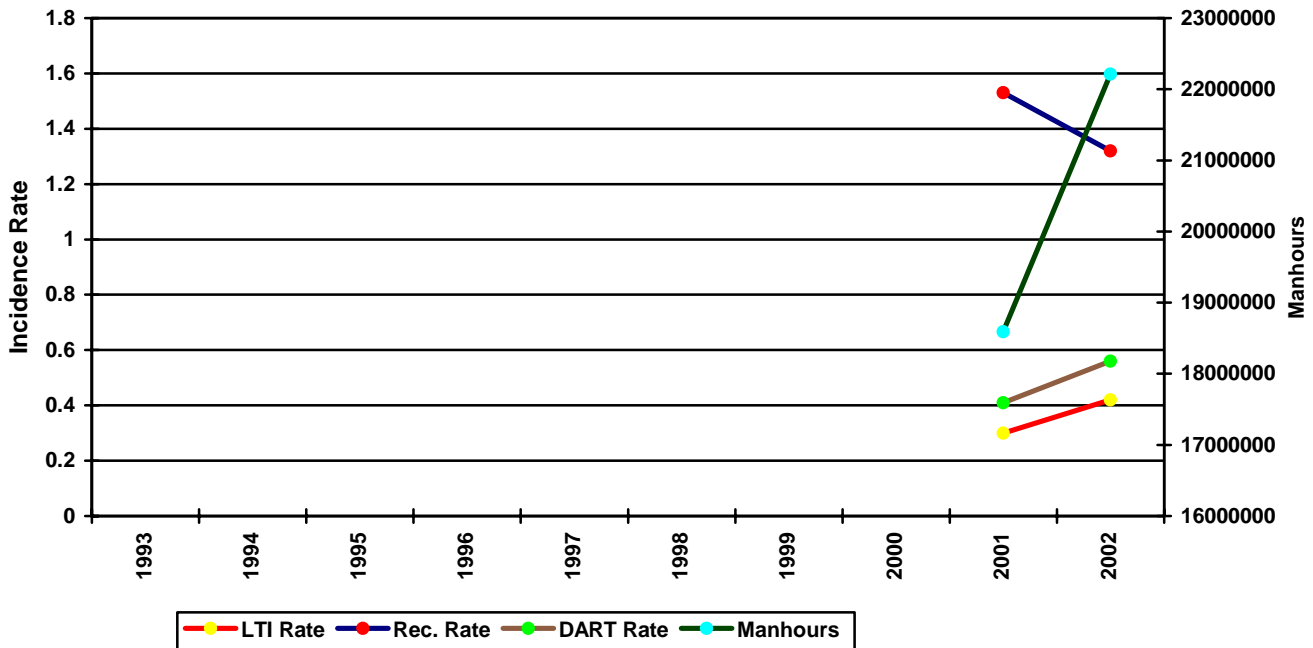
IADC 2002 Asia Pacific Water Totals (Table 1)

	<u>Total</u>
Total Manhours	22,213,156.00
Total Medical Treatment Incidents	85
Total Restricted Work Incidents	15
Total Lost Time Incidents	47
Total Fatalities	0
Total Recordables	147
MTO Incidence Rate	0.77
RWC Incidence Rate	0.14
LTI Incidence Rate	0.42
LTI Frequency Rate	2.12
DART Incidence Rate	0.56
DART Frequency Rate	2.79
Recordable Incidence Rate	1.32
Recordable Frequency Rate	6.62

Companies Reporting: Water - 19

Medical Treatment Incidence Rate = MTOs X 200,000
 Restricted Work Incidence Rate = RWCs X 200,000
 Lost Time Incidence Rate = LTIs X 200,000
 DART Incidence Rate = LTIs + RWC X 200,000
 Recordable Incidence Rate = RCRD X 200,000
 Lost Time Frequency Rate = LTIs X 1,000,000
 DART Frequency Rate = LTIs + RWC X 1,000,000
 Recordable Frequency Rate = RCRD X 1,000,000

Asia Pacific Water Incidence Rates vs Manhours (Figure 1)

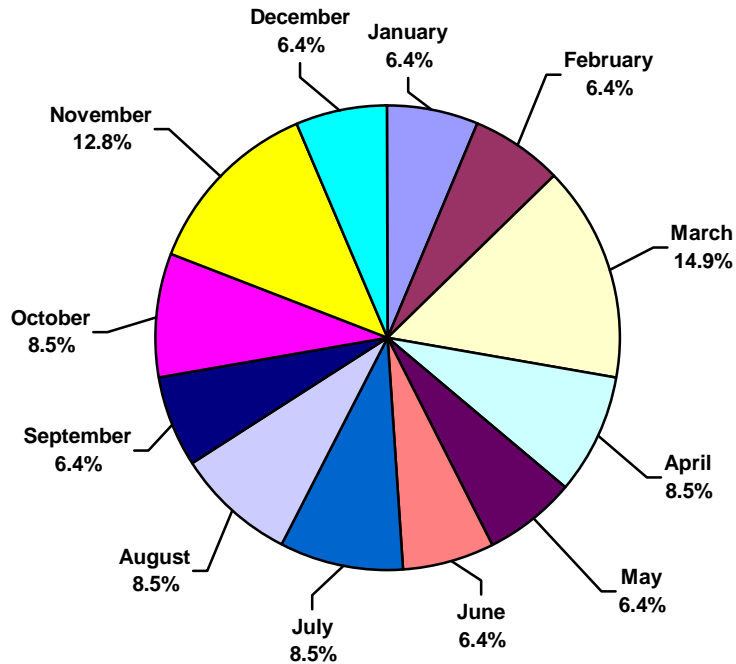




IADC 2002 Asia Pacific Water Charts

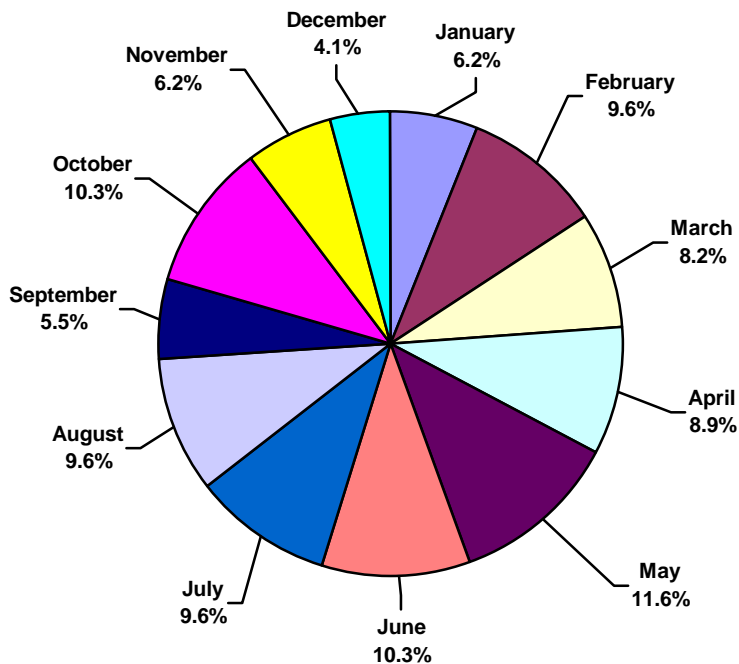
Asia Pacific Water Total Lost Time Incidents by Month (Chart 1)

Based on 47 Incidents



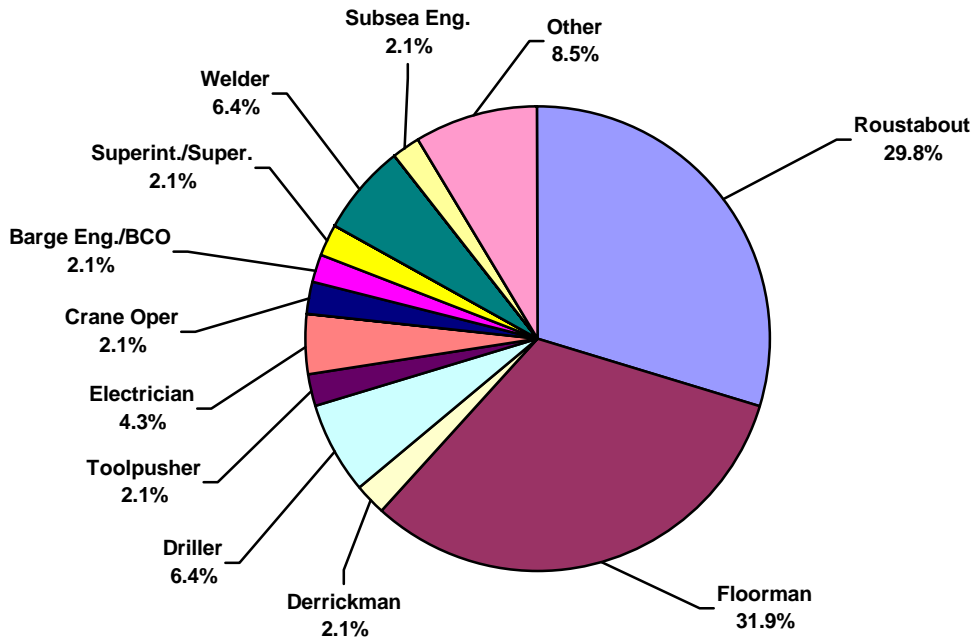
Asia Pacific Water Total Recordable Incidents by Month (Chart 2)

Based on 147 Incidents

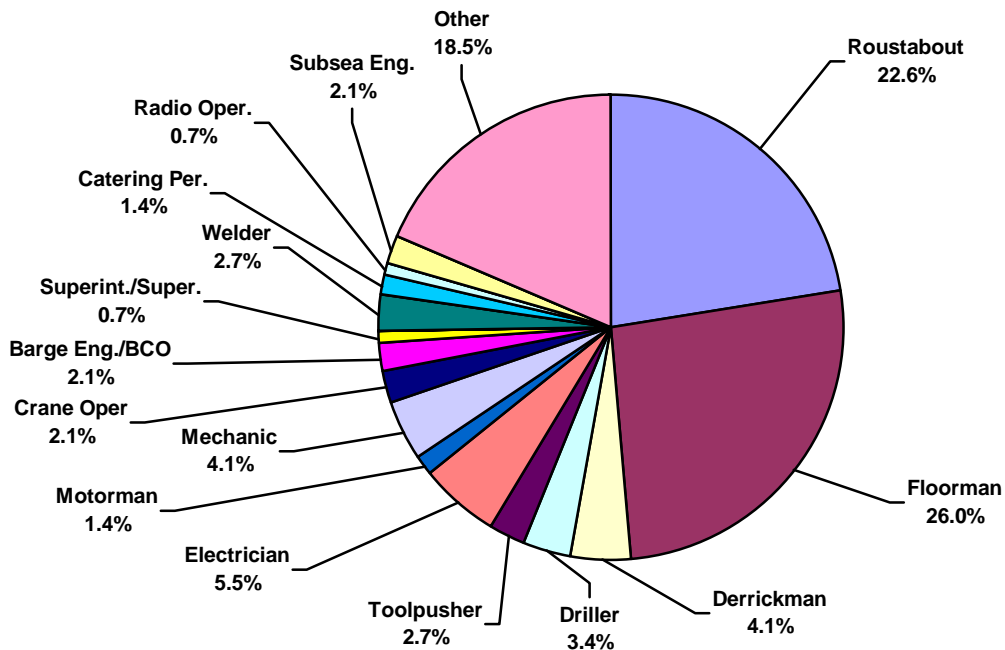




Asia Pacific Water Total Lost Time Incidents by Occupation (Chart 3)
Based on 47 Incidents

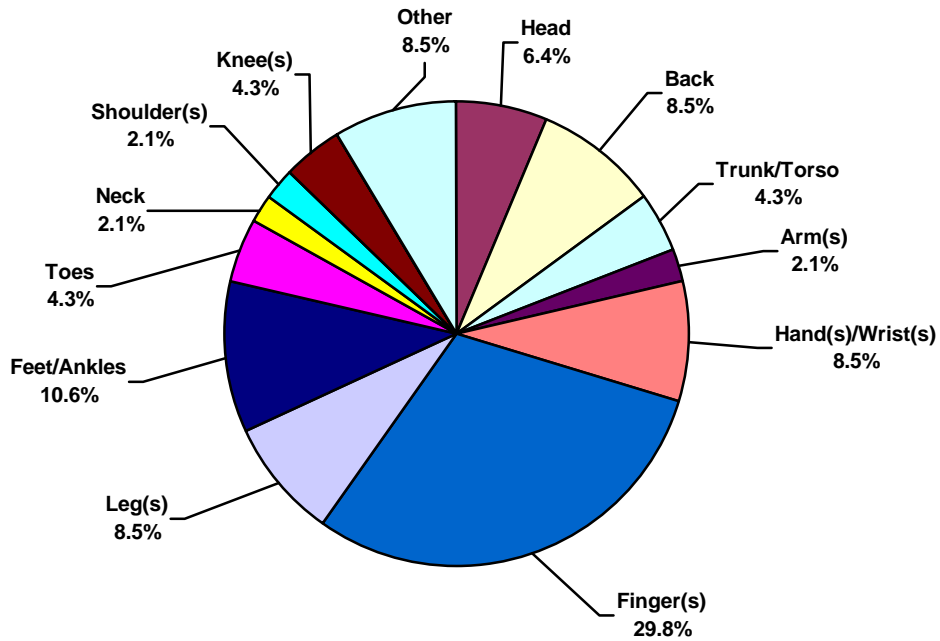


Asia Pacific Water Total Recordable Incidents by Occupation (Chart 4)
Based on 147 Incidents

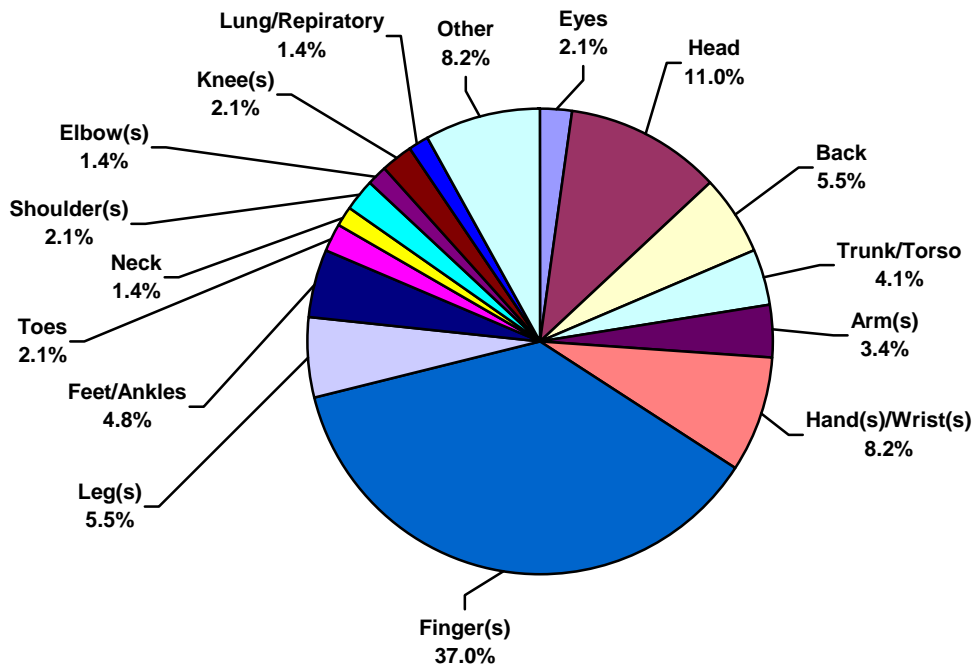




Asia Pacific Water Total Lost Time Incidents by Body Part (Chart 5)
Based on 47 Incidents

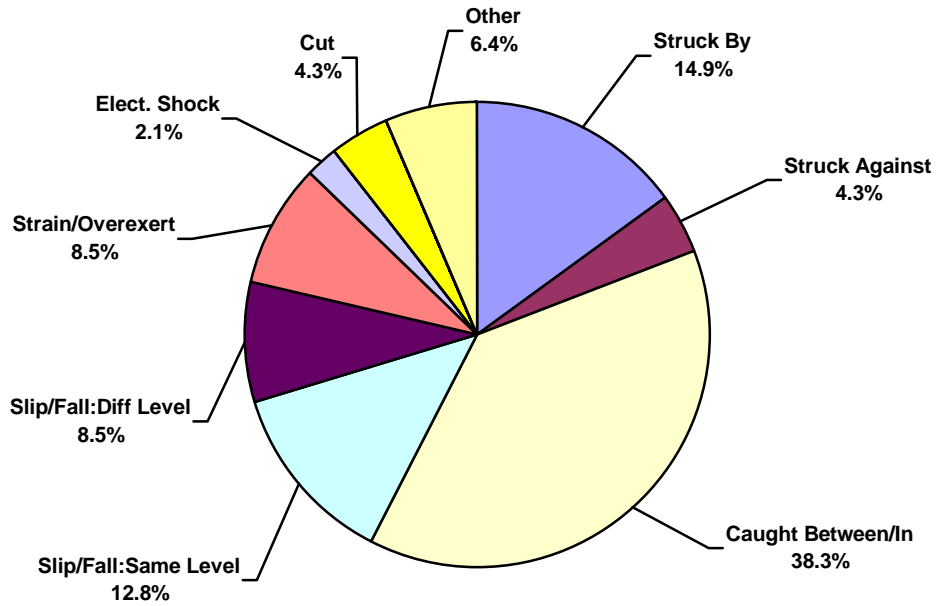


Asia Pacific Water Total Recordable Incidents by Body Part (Chart 6)
Based on 147 Incidents

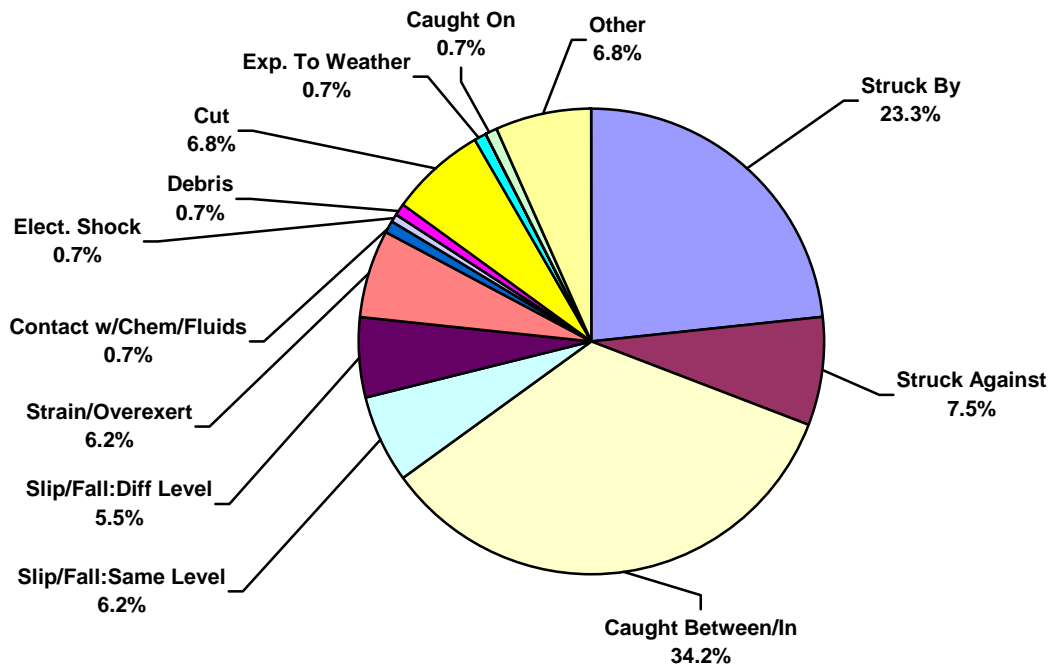




Asia Pacific Water Total Lost Time Incidents by Incident Type (Chart 7)
Based on 47 Incidents

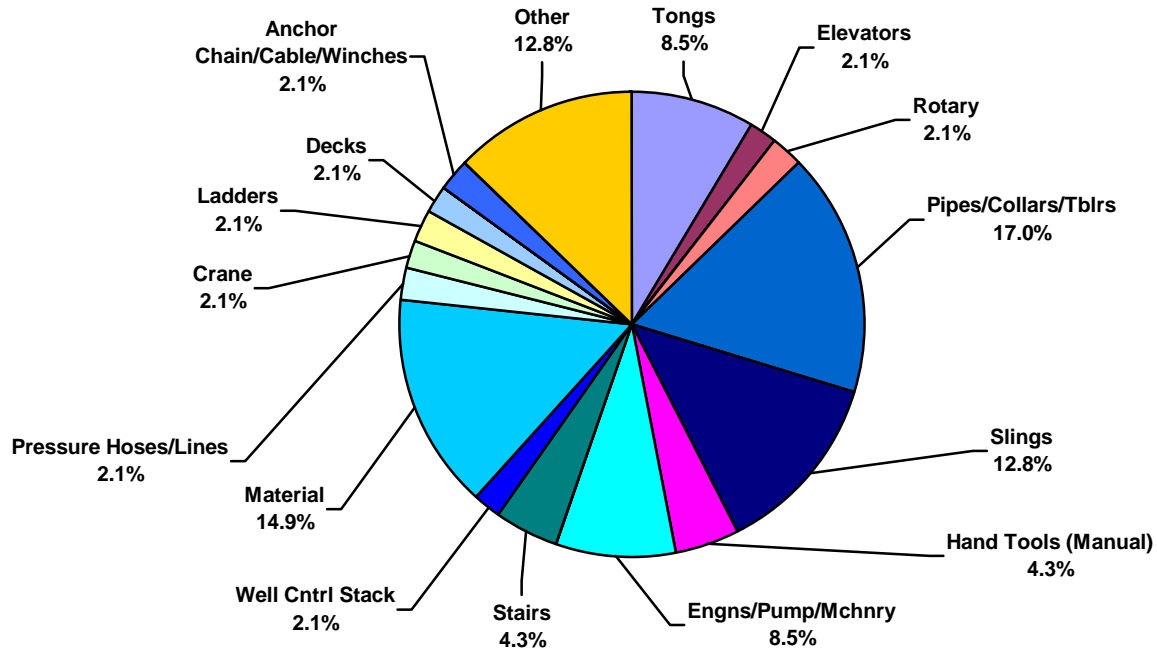


Asia Pacific Water Total Recordable Incidents by Incident Type (Chart 8)
Based on 147 Incidents

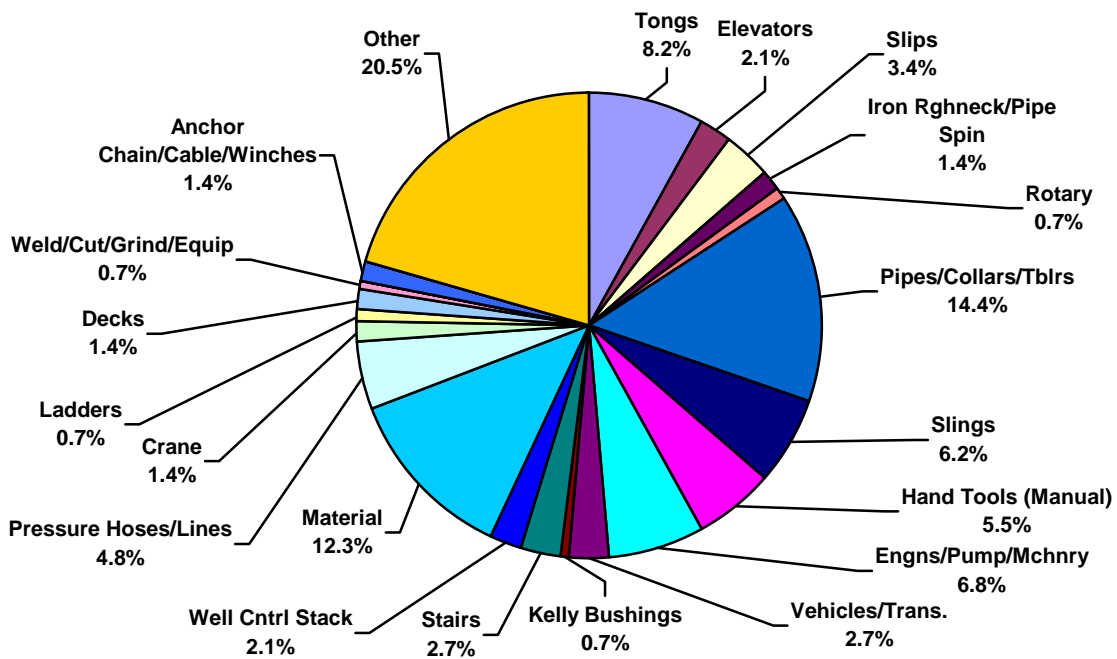




Asia Pacific Water Total Lost Time Incidents by Equipment (Chart 9)
Based on 47 Incidents

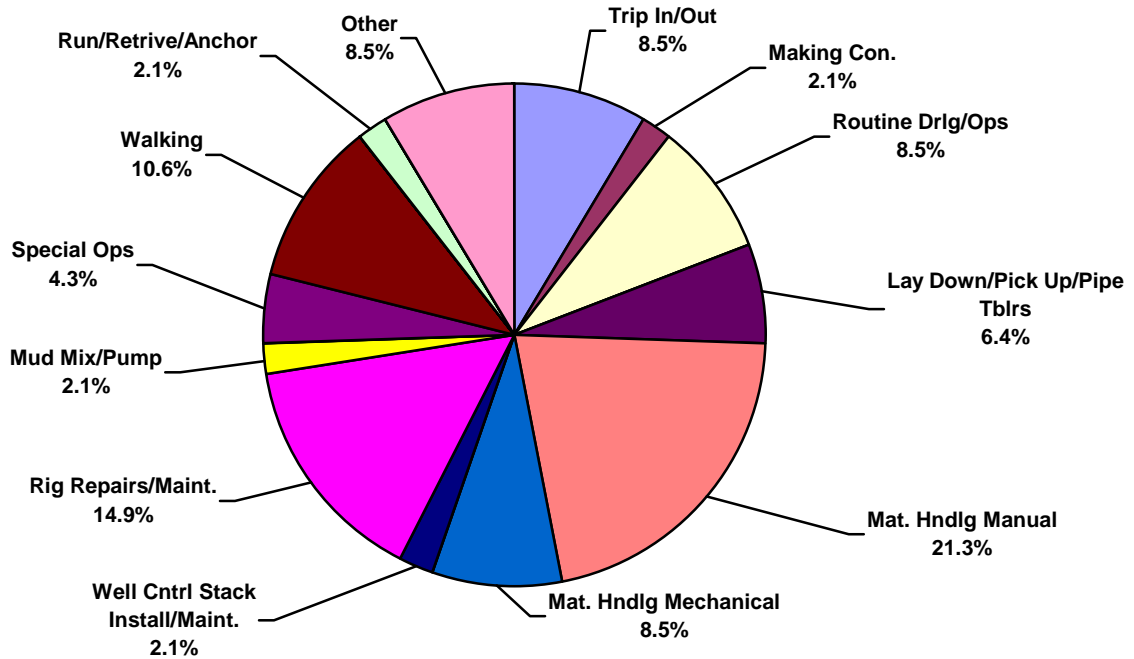


Asia Pacific Water Total Recordable Incidents by Equipment (Chart 10)
Based on 147 Incidents

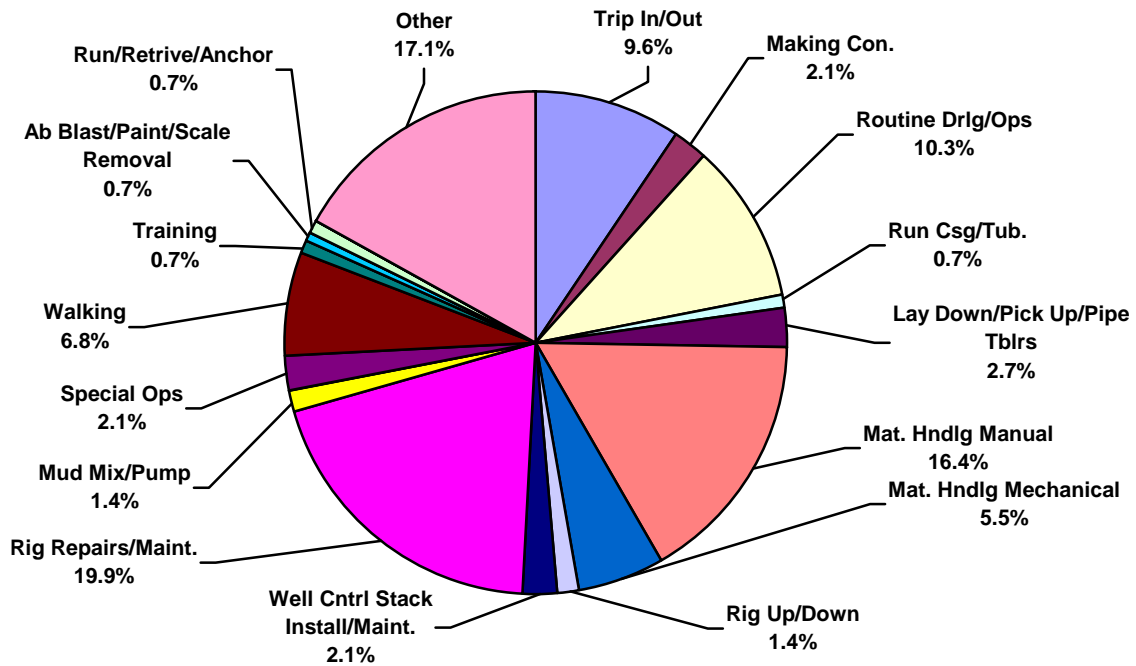




Asia Pacific Water Total Lost Time Incidents by Operation (Chart 11)
Based on 47 Incidents

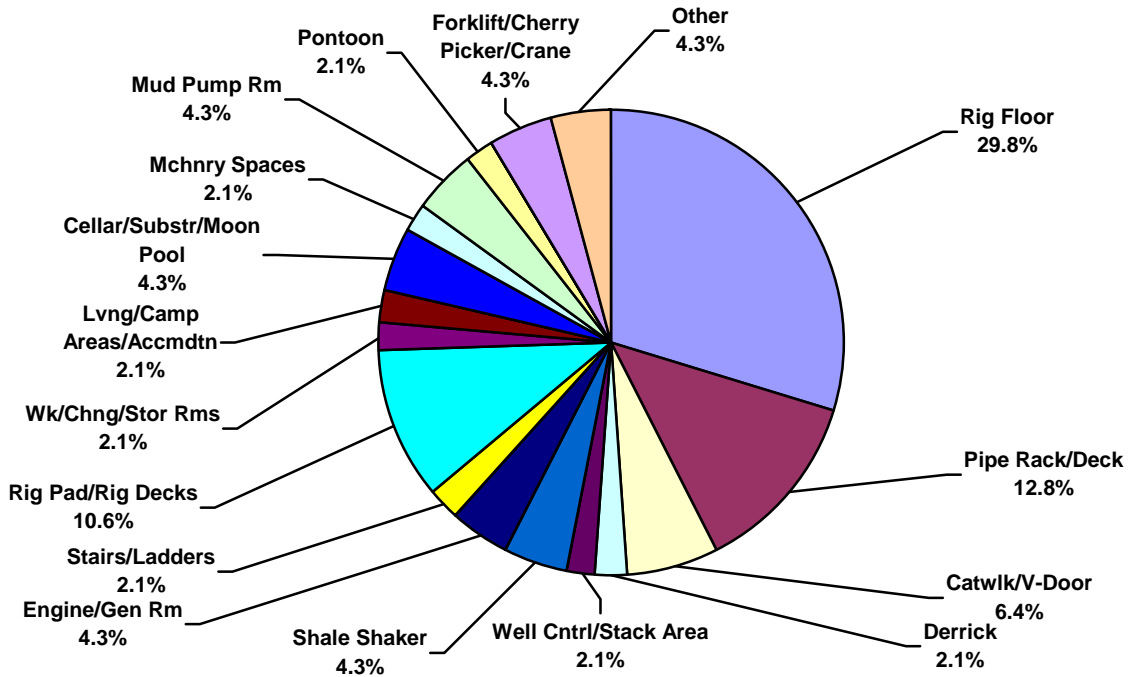


Asia Pacific Water Total Recordable Incidents by Operation (Chart 12)
Based on 147 Incidents

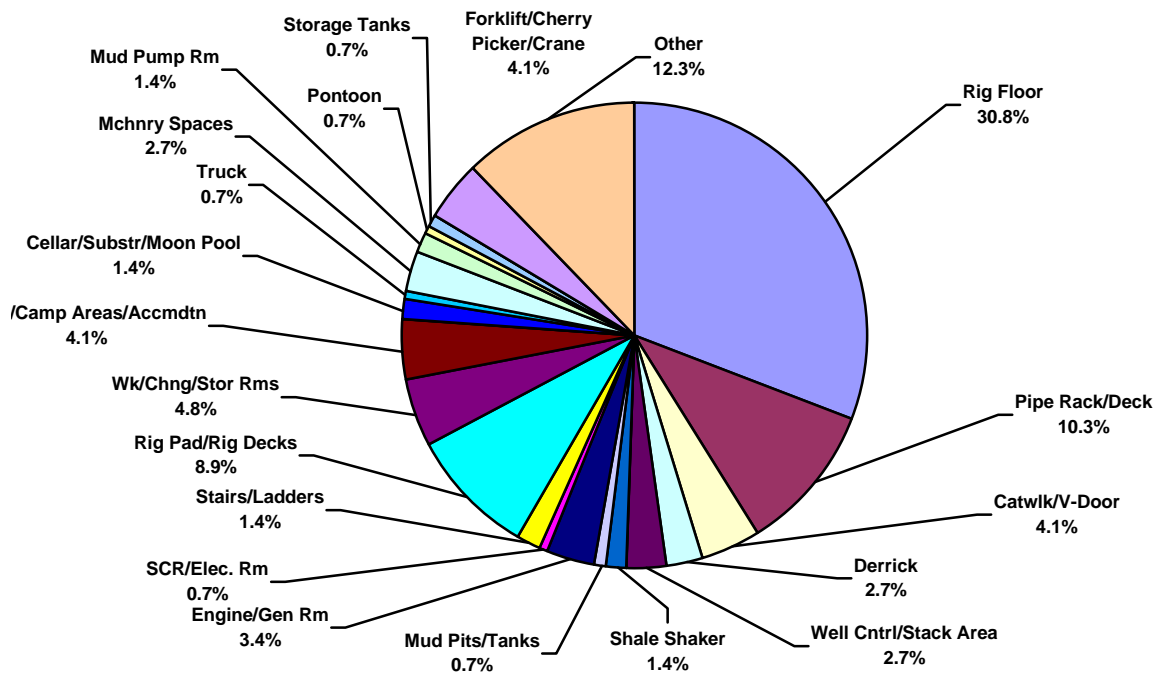




Asia Pacific Water Total Lost Time Incidents by Location (Chart 13)
Based on 47 Incidents

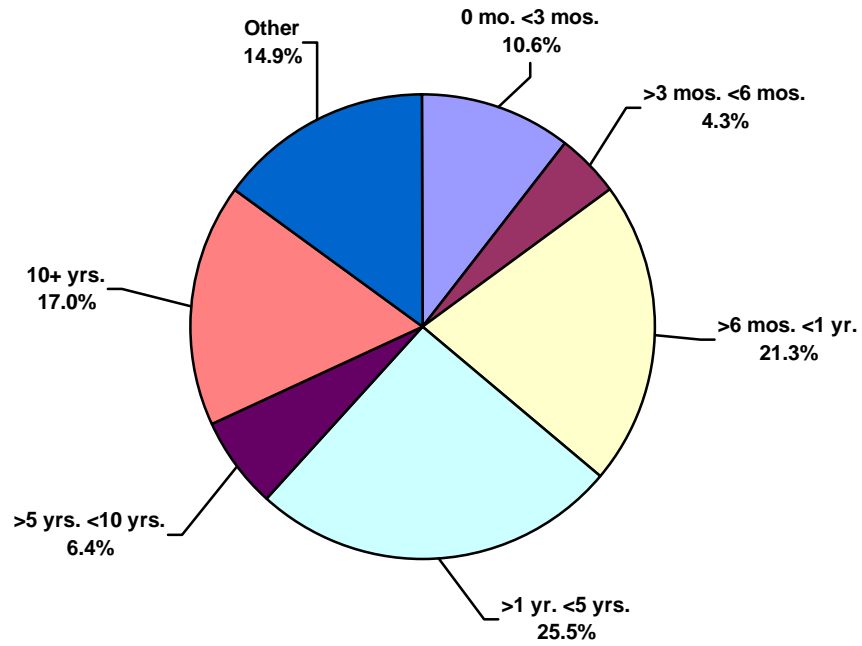


Asia Pacific Water Total Recordable Incidents by Location (Chart 14)
Based on 147 Incidents

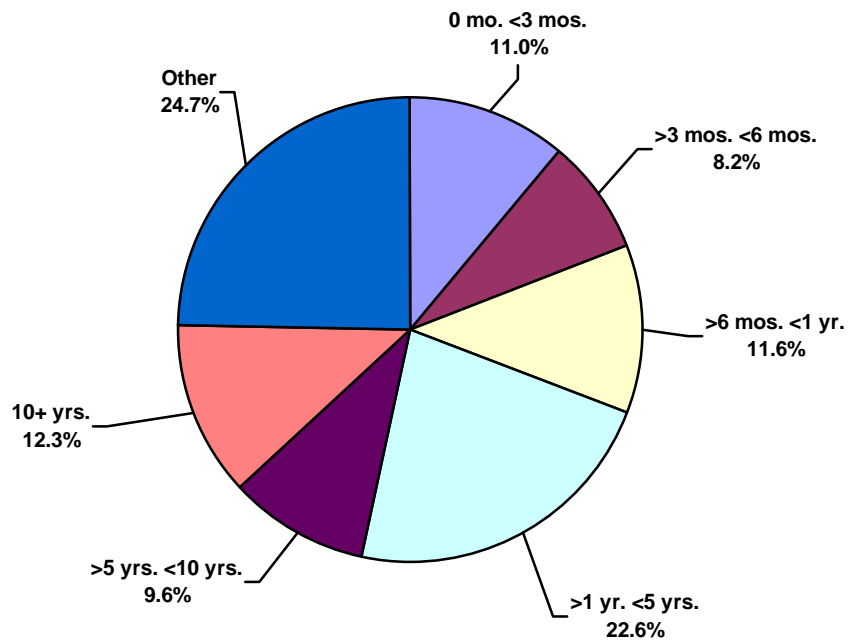




Asia Pacific Water Total Lost Time Incidents by Time in Service (Chart 15)
Based on 47 Incidents

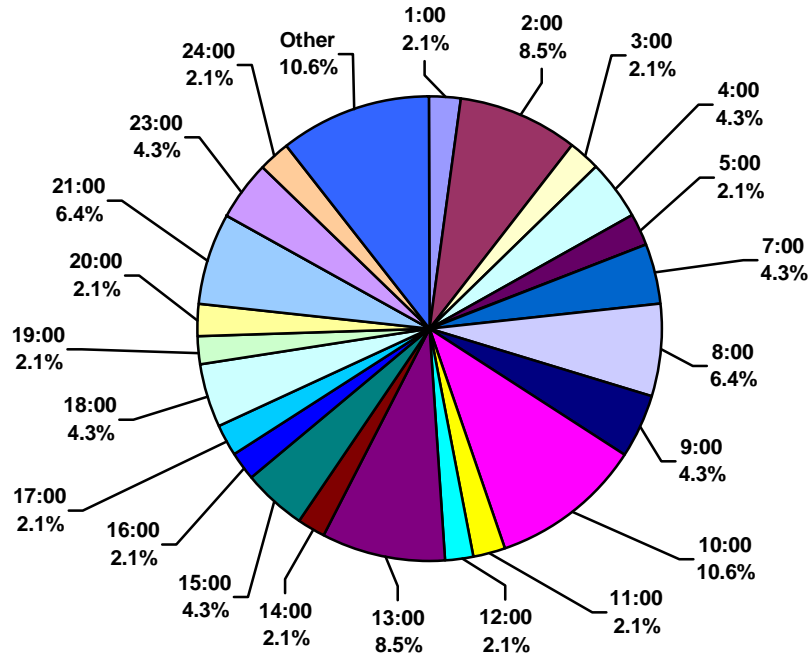


Asia Pacific Water Total Recordable Incidents by Time in Service (Chart 16)
Based on 147 Incidents





Asia Pacific Water Total Lost Time Incidents by Time of Day (Chart 17)
Based on 47 Incidents



Asia Pacific Water Total Recordable Incidents by Time of Day (Chart 18)
Based on 147 Incidents

