



IADC ASP PROGRAM

2002



Summary of Occupational Incidents (Asia Pacific Land Totals)

Issued 1 May 2003



Table of Contents

(Table of Contents is Hyperlinked, Just click on Topic & go)

2002 ASP PROGRAM ASIA PACIFIC LAND TOTALS	3
IADC 2002 ASIA PACIFIC LAND TOTALS (TABLE 1)	3
<i>Asia Pacific Land Total Incidence Rates vs Manhours (Figure 1)</i>	<i>3</i>
IADC 2002 ASIA PACIFIC LAND CHART	4
<i>Asia Pacific Land Total Lost Time Incidents by Month (Chart 1).....</i>	<i>4</i>
<i>Asia Pacific Land Total Recordable Incidents by Month (Chart 2)</i>	<i>4</i>
<i>Asia Pacific Land Total Lost Time Incidents by Occupation (Chart 3).....</i>	<i>5</i>
<i>Asia Pacific Land Total Recordable Incidents by Occupation (Chart 4)</i>	<i>5</i>
<i>Asia Pacific Land Total Lost Time Incidents by Body Part (Chart 5).....</i>	<i>6</i>
<i>Asia Pacific Land Total Recordable Incidents by Body Part (Chart 6)</i>	<i>6</i>
<i>Asia Pacific Land Total Lost Time Incidents by Incident Type (Chart 7)</i>	<i>7</i>
<i>Asia Pacific Land Total Recordable Incidents by Incident Type (Chart 8).....</i>	<i>7</i>
<i>Asia Pacific Land Total Lost Time Incidents by Equipment (Chart 9).....</i>	<i>8</i>
<i>Asia Pacific Land Total Recordable Incidents by Equipment (Chart 10).....</i>	<i>8</i>
<i>Asia Pacific Land Total Lost Time Incidents by Operation (Chart 11).....</i>	<i>9</i>
<i>Asia Pacific Land Total Recordable Incidents by Operation (Chart 12).....</i>	<i>9</i>
<i>Asia Pacific Land Total Lost Time Incidents by Location (Chart 13).....</i>	<i>10</i>
<i>Asia Pacific Land Total Recordable Incidents by Location (Chart 14)</i>	<i>10</i>
<i>Asia Pacific Land Total Lost Time Incidents by Time in Service (Chart 15).....</i>	<i>11</i>
<i>Asia Pacific Land Total Recordable Incidents by Time in Service (Chart 16).....</i>	<i>11</i>
<i>Asia Pacific Land Total Lost Time Incidents by Time of Day (Chart 17)</i>	<i>12</i>
<i>Asia Pacific Land Total Recordable Incidents by Time of Day (Chart 18).....</i>	<i>12</i>



2002 ASP Program Asia Pacific Land Totals

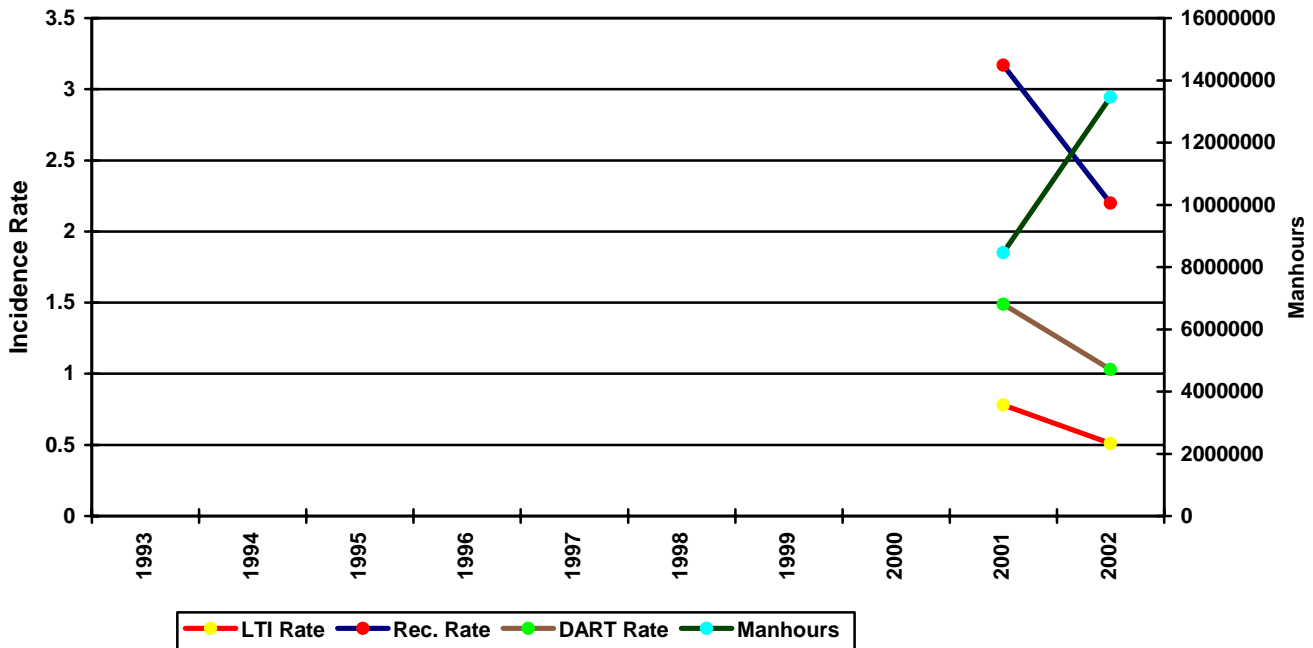
IADC 2002 Asia Pacific Land Totals (Table 1)

	<u>Total</u>
Total Manhours	13,458,685.00
Total Medical Treatment Incidents	79
Total Restricted Work Incidents	35
Total Lost Time Incidents	34
Total Fatalities	0
Total Recordables	148
MTO Incidence Rate	1.17
RWC Incidence Rate	0.52
LTI Incidence Rate	0.51
LTI Frequency Rate	2.53
DART Incidence Rate	1.03
DART Frequency Rate	5.13
Recordable Incidence Rate	2.20
Recordable Frequency Rate	11.00

Companies Reporting: Land – 16

Medical Treatment Incidence Rate = MTOs X 200,000
 Restricted Work Incidence Rate = RWCs X 200,000
 Lost Time Incidence Rate = LTIs X 200,000
 DART Incidence Rate = LTIs + RWC X 200,000
 Recordable Incidence Rate = RCRD X 200,000
 Lost Time Frequency Rate = LTIs X 1,000,000
 DART Frequency Rate = LTIs + RWC X 1,000,000
 Recordable Frequency Rate = RCRD X 1,000,000

Asia Pacific Land Total Incidence Rates vs Manhours (Figure 1)

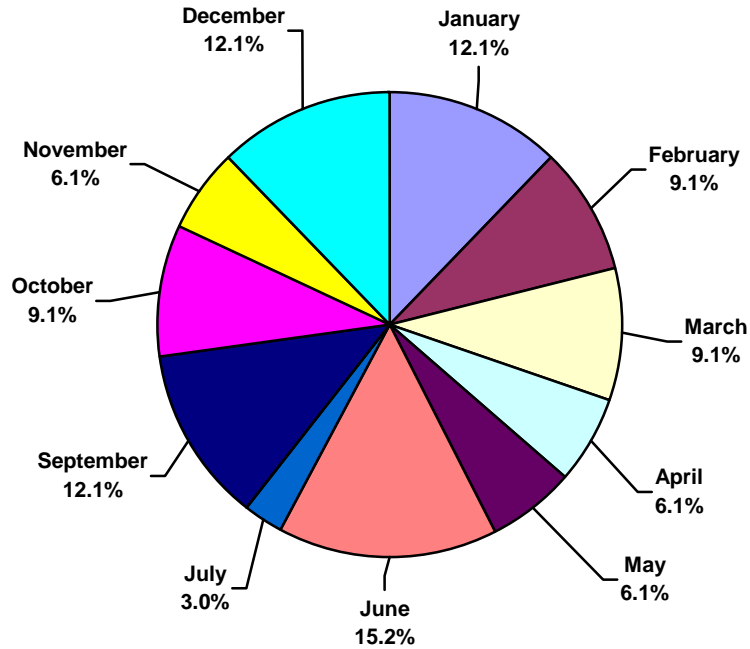




IADC 2002 Asia Pacific Land Chart

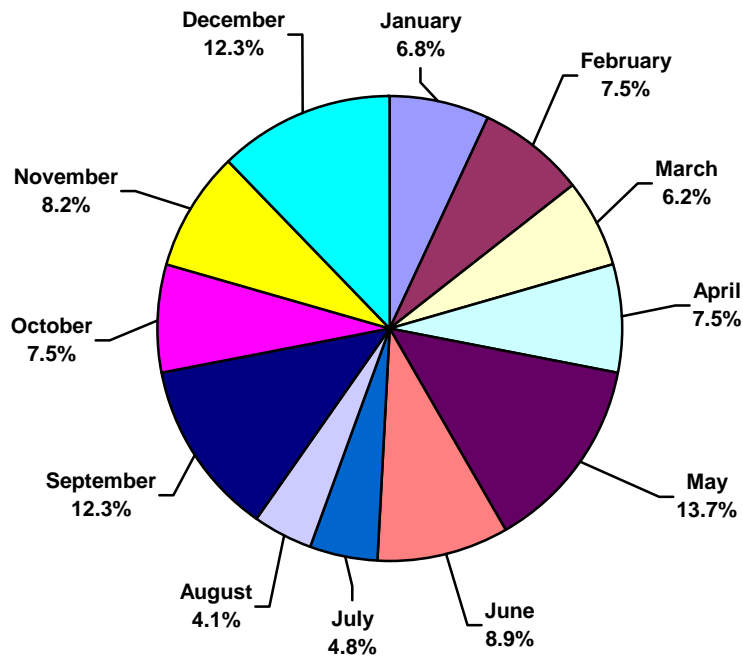
Asia Pacific Land Total Lost Time Incidents by Month (Chart 1)

Based on 34 Incidents



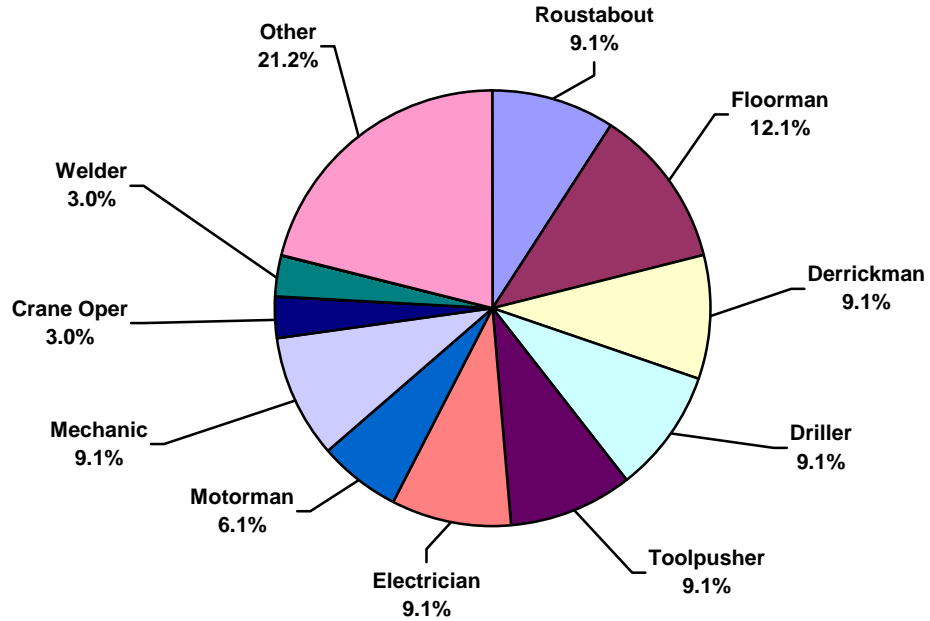
Asia Pacific Land Total Recordable Incidents by Month (Chart 2)

Based on 148 Incidents

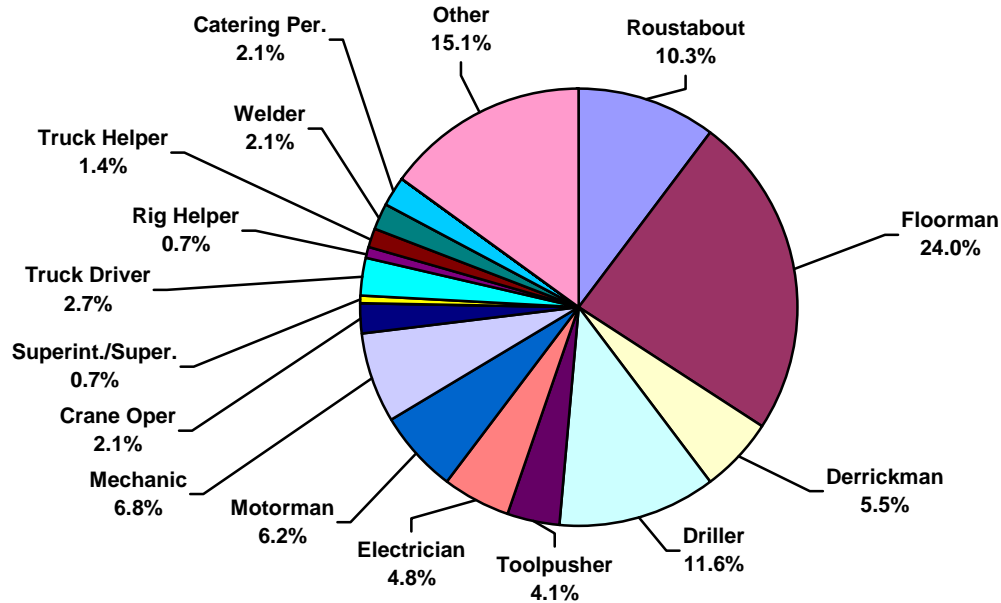




Asia Pacific Land Total Lost Time Incidents by Occupation (Chart 3)
Based on 34 Incidents

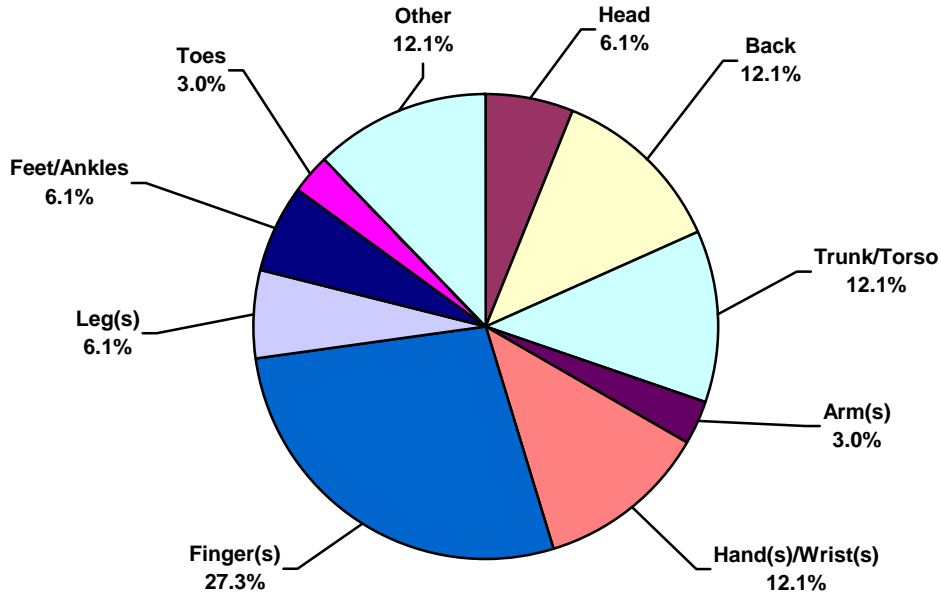


Asia Pacific Land Total Recordable Incidents by Occupation (Chart 4)
Based on 148 Incidents

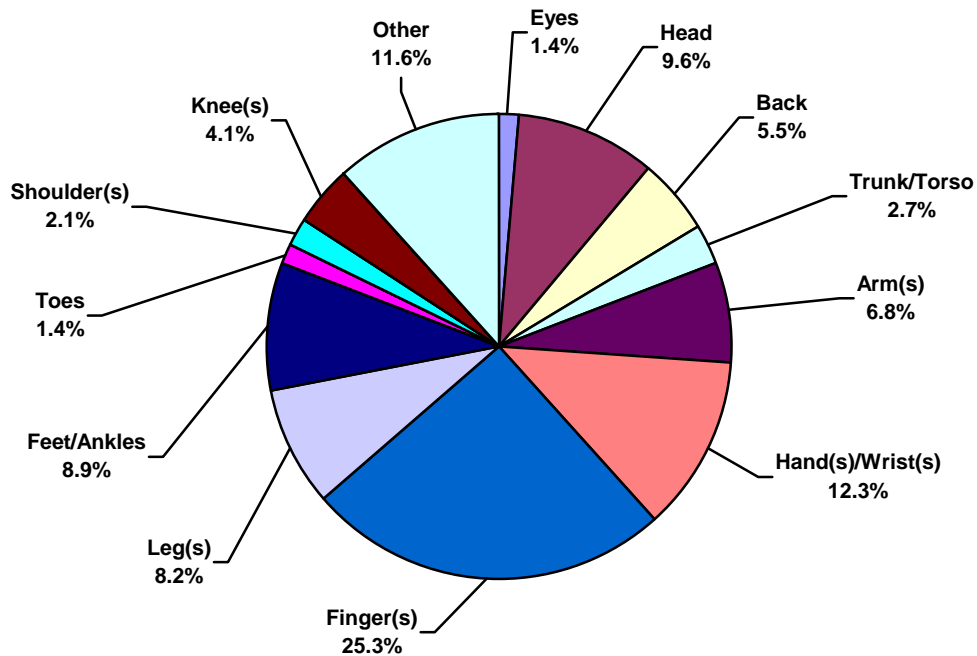




Asia Pacific Land Total Lost Time Incidents by Body Part (Chart 5)
Based on 34 Incidents

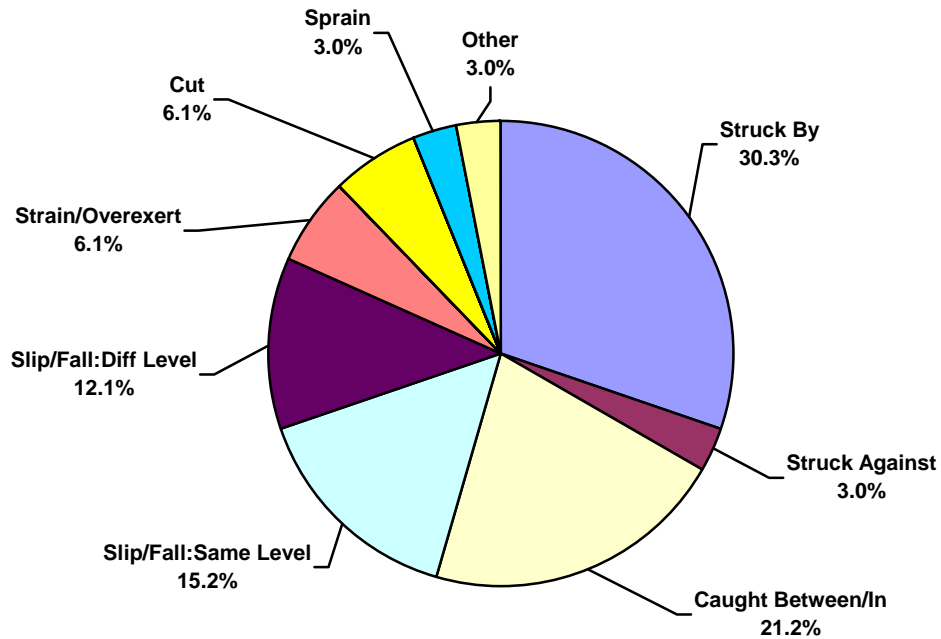


Asia Pacific Land Total Recordable Incidents by Body Part (Chart 6)
Based on 148 Incidents

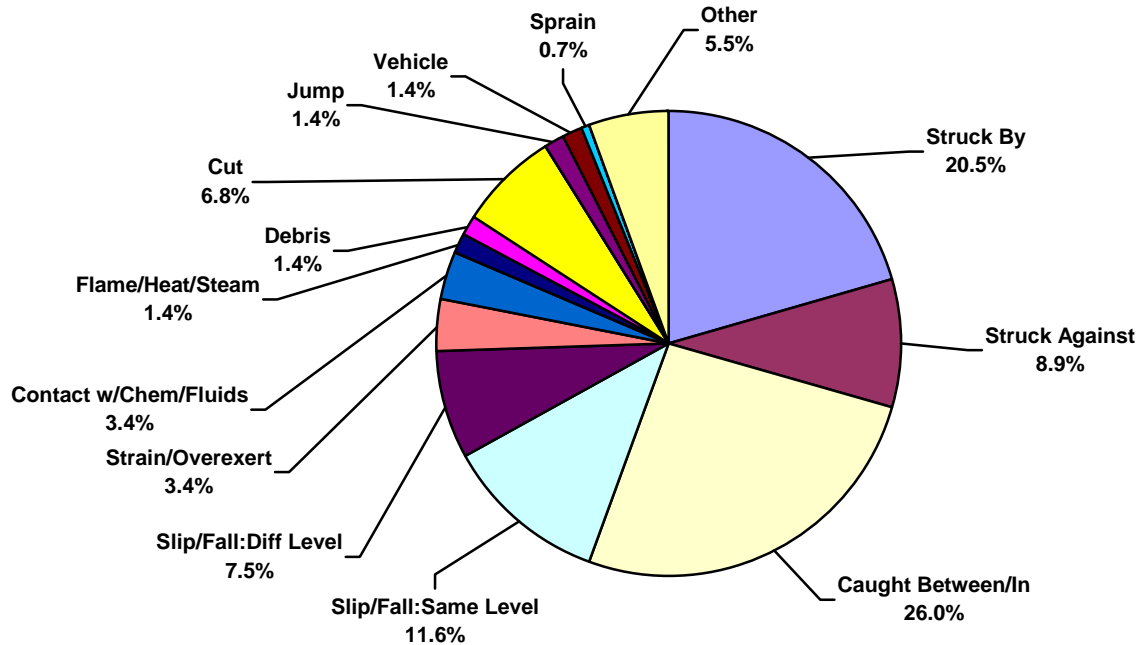




Asia Pacific Land Total Lost Time Incidents by Incident Type (Chart 7)
Based on 34 Incidents

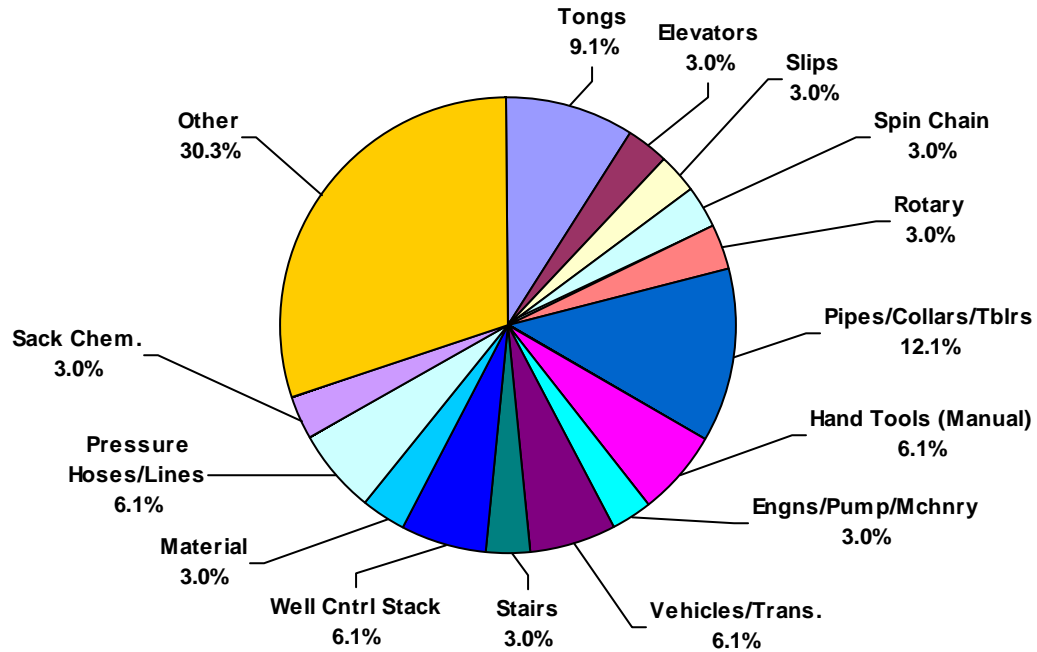


Asia Pacific Land Total Recordable Incidents by Incident Type (Chart 8)
Based on 148 Incidents

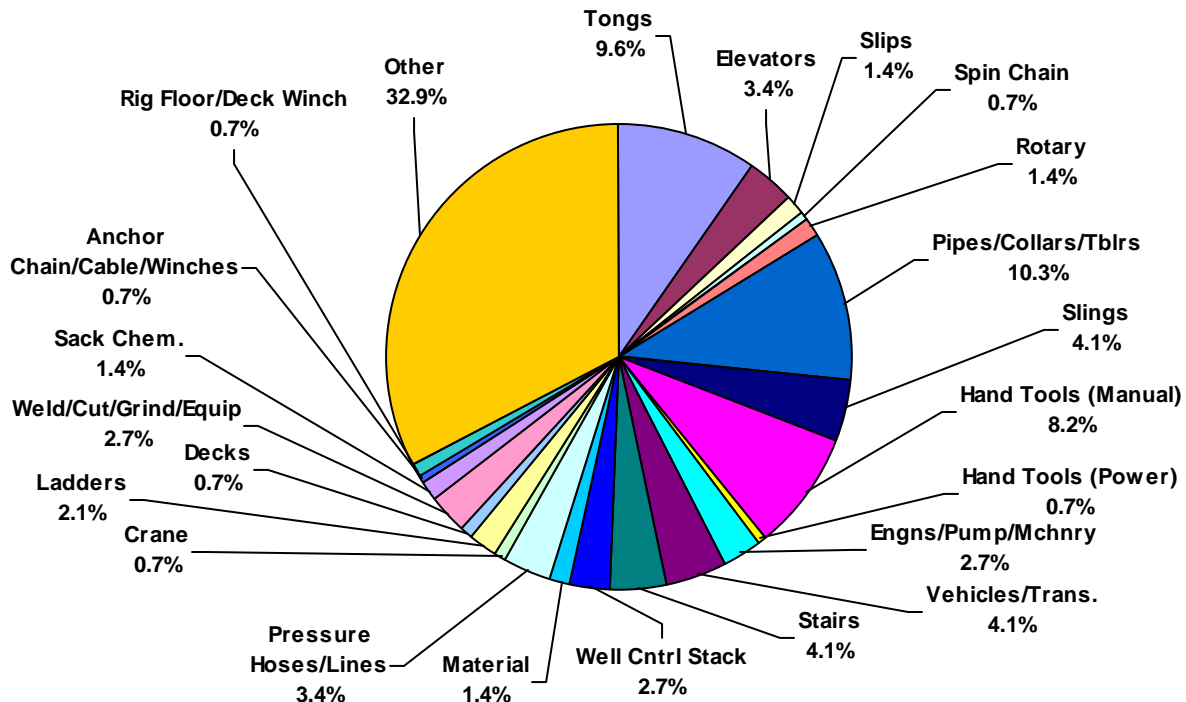




Asia Pacific Land Total Lost Time Incidents by Equipment (Chart 9)
Based on 34 Incidents

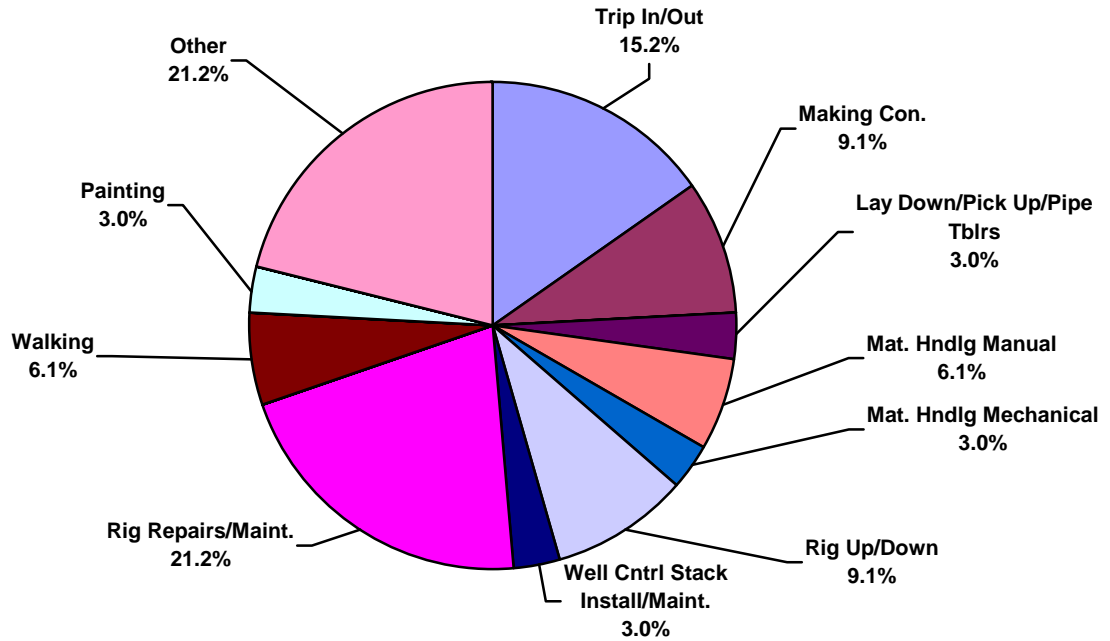


Asia Pacific Land Total Recordable Incidents by Equipment (Chart10)
Based on 148 Incidents

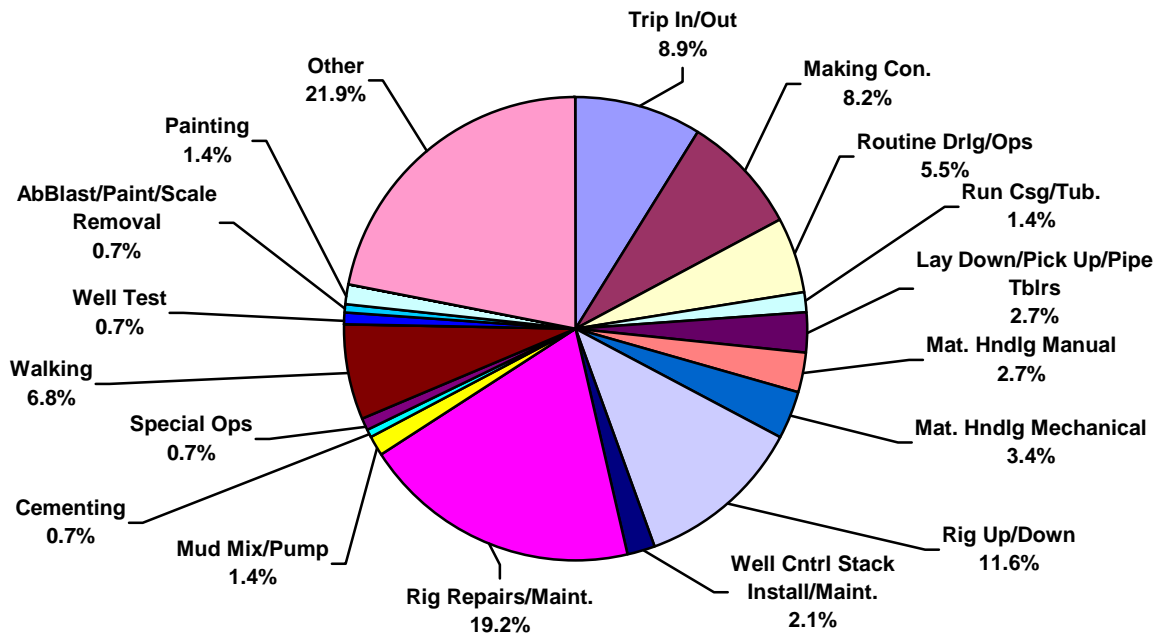




Asia Pacific Land Total Lost Time Incidents by Operation (Chart 11)
Based on 34 Incidents

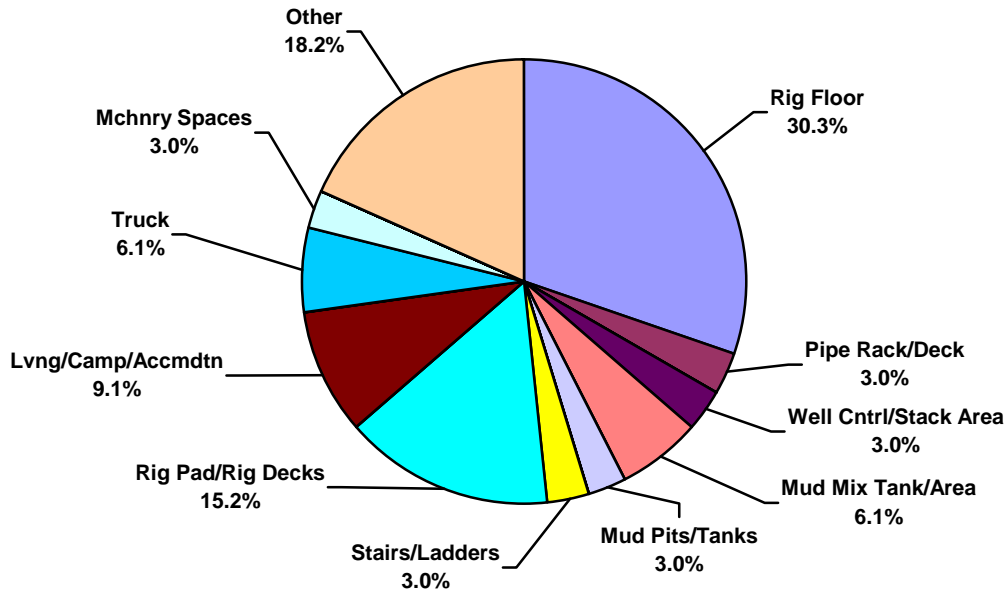


Asia Pacific Land Total Recordable Incidents by Operation (Chart 12)
Based on 148 Incidents

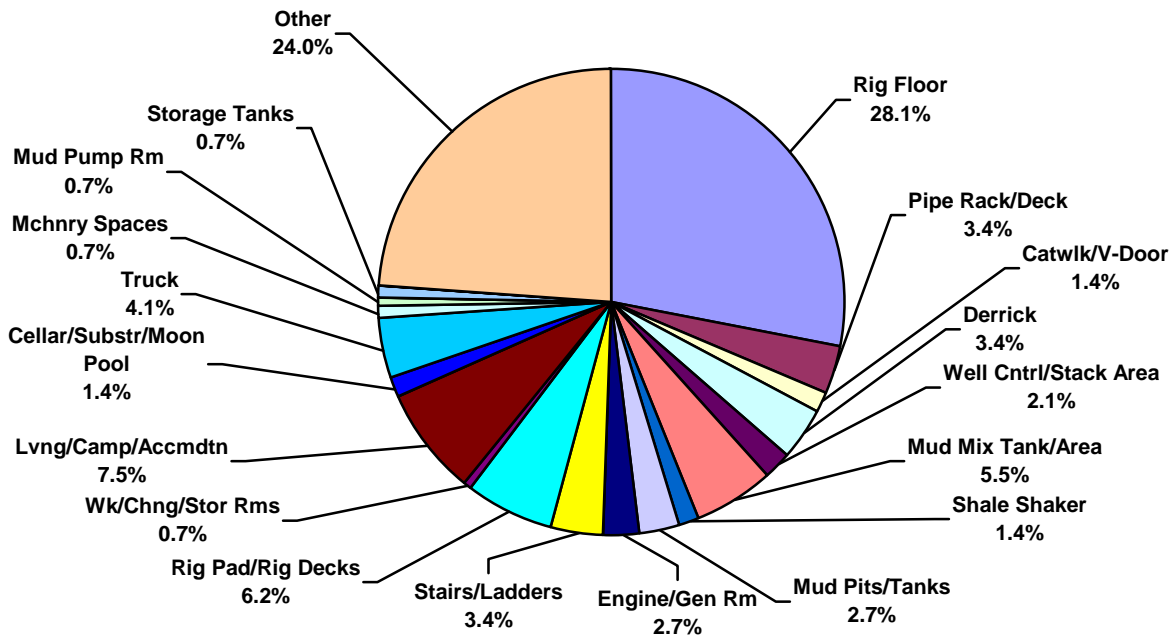




Asia Pacific Land Total Lost Time Incidents by Location (Chart 13)
Based on 34 Incidents

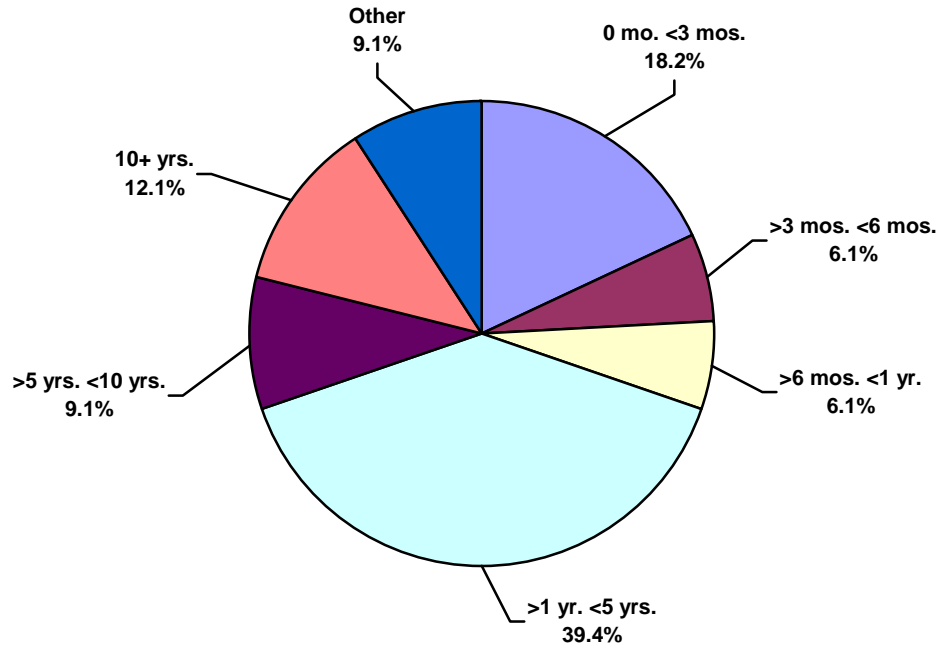


Asia Pacific Land Total Recordable Incidents by Location (Chart 14)
Based on 148 Incidents

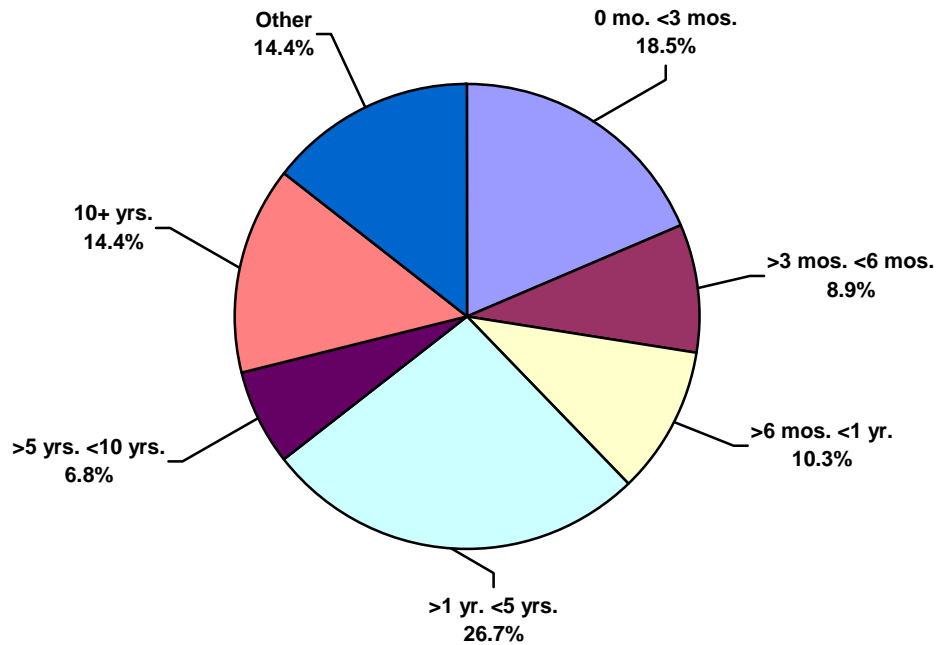




Asia Pacific Land Total Lost Time Incidents by Time in Service (Chart 15)
Based on 34 Incidents

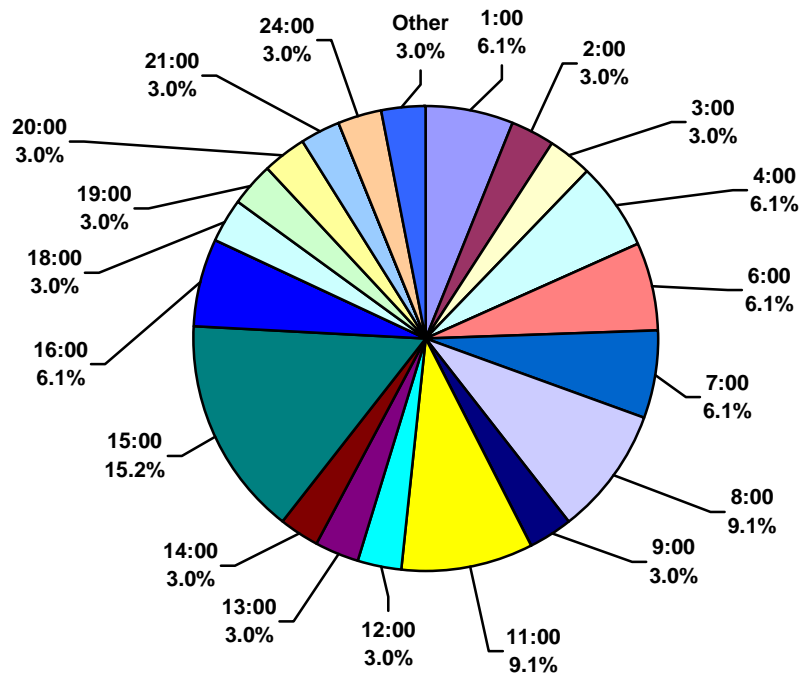


Asia Pacific Land Total Recordable Incidents by Time in Service (Chart 16)
Based on 148 Incidents





Asia Pacific Land Total Lost Time Incidents by Time of Day (Chart 17)
Based on 34 Incidents



Asia Pacific Land Total Recordable Incidents by Time of Day (Chart 18)
Based on 148 Incidents

